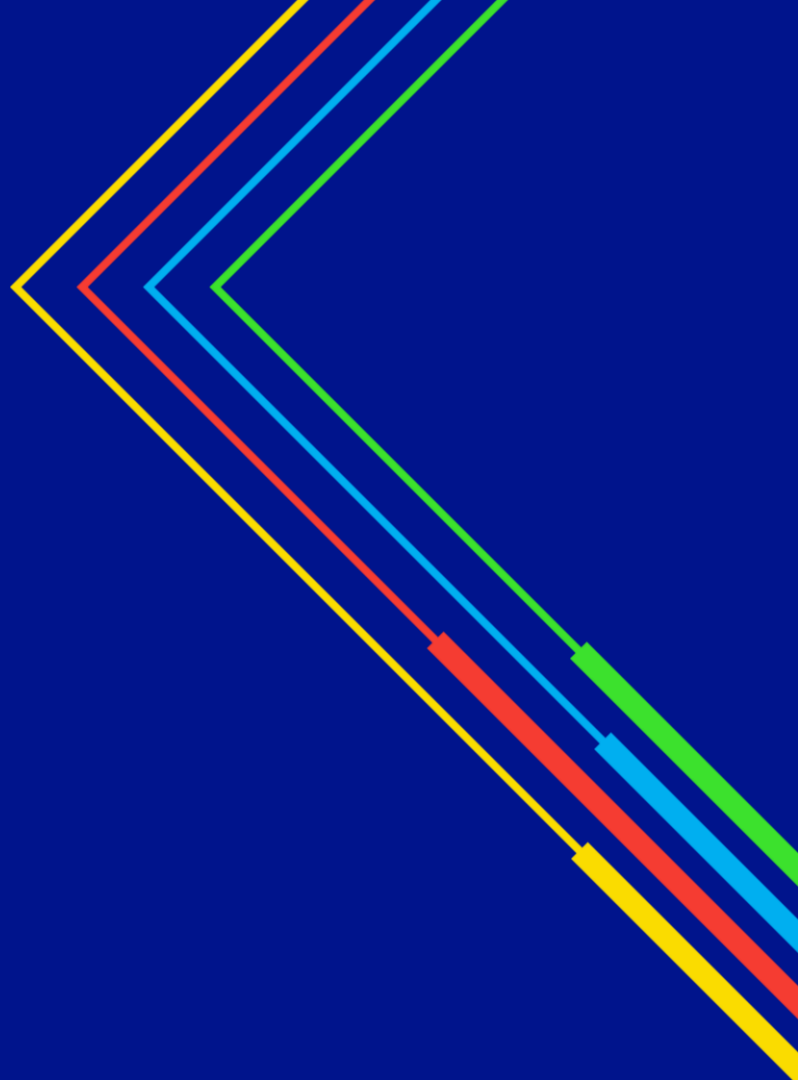


Modification Proposal 738

Action 1101

3/12/20

national**grid**



QSEC incremental allocations between 1/4/17 & 30/9/20

3 relevant QSECs: Mar 18, Jul 18 and Mar 19

Type of Incremental	Capacity Amount (kWh/d)	Original value (£)	Forecast value (£)	Uplift x
Substitution	64,459	£ 64,459.19	£ 16,509,639.51	256
Non-Obligated	66,776	£ 67,689.49	£ 17,428,135.50	257
Total			£ 33,937,775.01	

Reference source for forecast prices: <https://www.gasgovernance.co.uk/sites/default/files/ggf/book/2020-07/QSEC%20notice%20for%20Oct%202020%20and%20March%2021%20Auction.pdf>

Annual Breakdown

	Forecast Revenue (nominal £)	
Gas Year	Obligated (substitution)	Non-Obligated
2020/21	1,772,947	1,908,670
2021/22	1,288,967	1,383,789
2022/23	1,407,492	1,515,567
2023/24	1,284,028	1,386,426
2024/25	1,195,134	1,290,090
2025/26	1,195,134	2,743,241
2026/27	1,195,134	1,198,417
2027/28	1,195,134	1,198,417
2028/29	1,195,134	1,198,417
2029/30	1,195,134	1,201,701
2030/31	1,195,134	1,201,701
2031/32	1,195,134	1,201,701
2032/33	1,195,134	-
Total	16,509,640	17,428,135

national**grid**