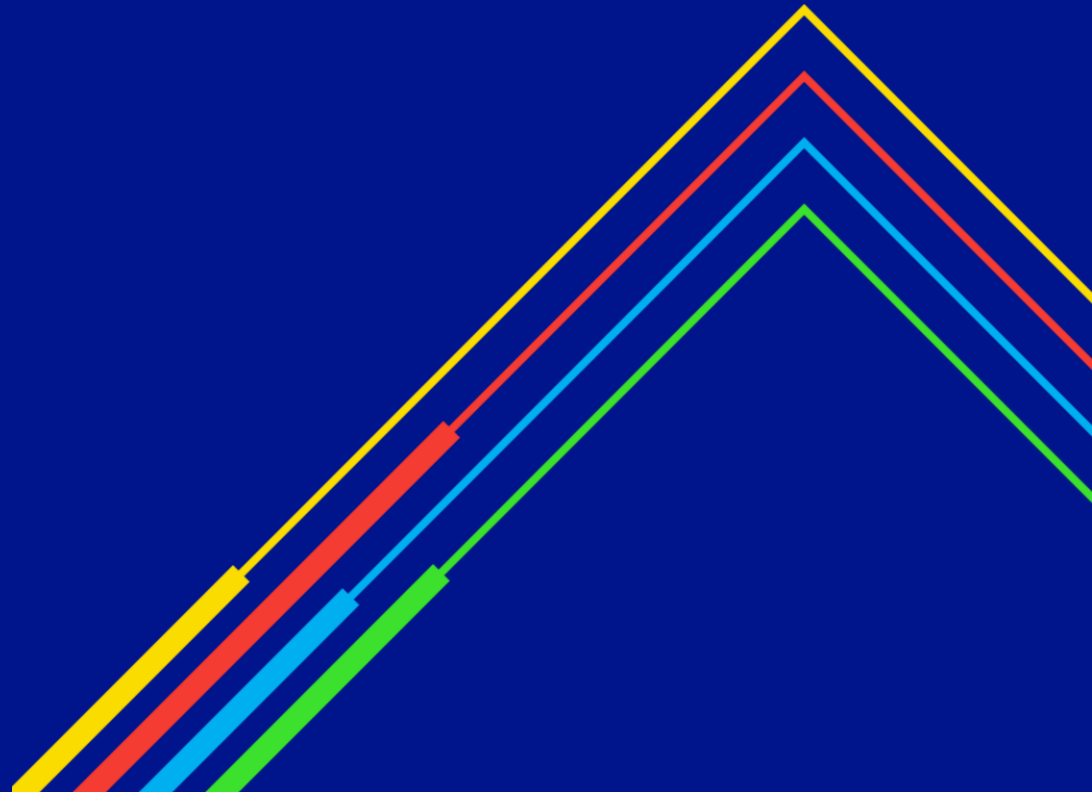


Capacity Access Review

Transmission Workgroup
1st July 2021

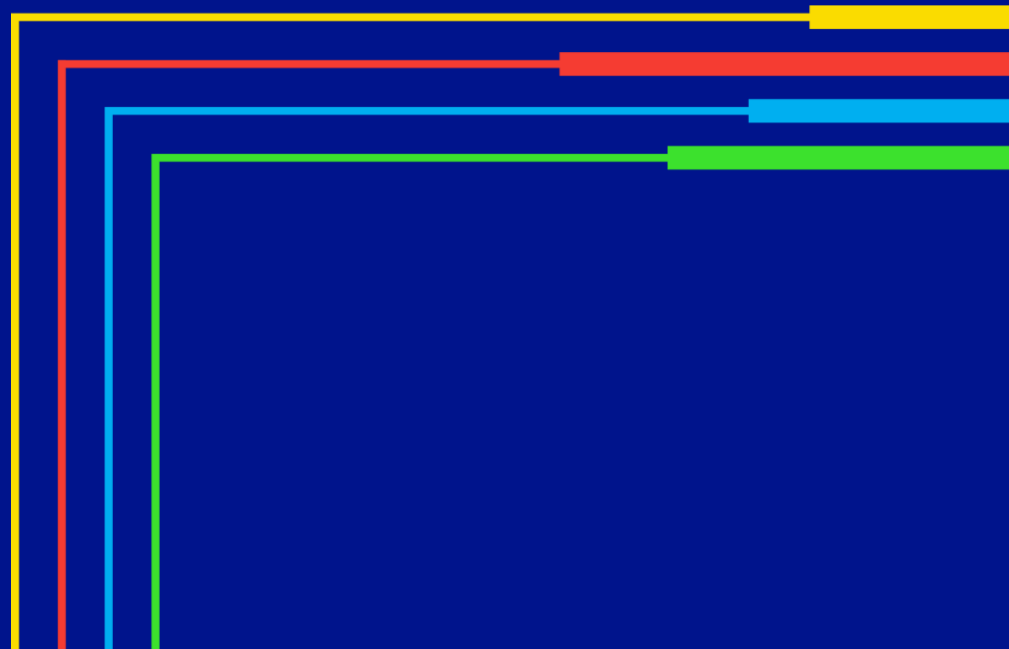
national**grid**



01

Movement of capacity between exit points

nationalgrid



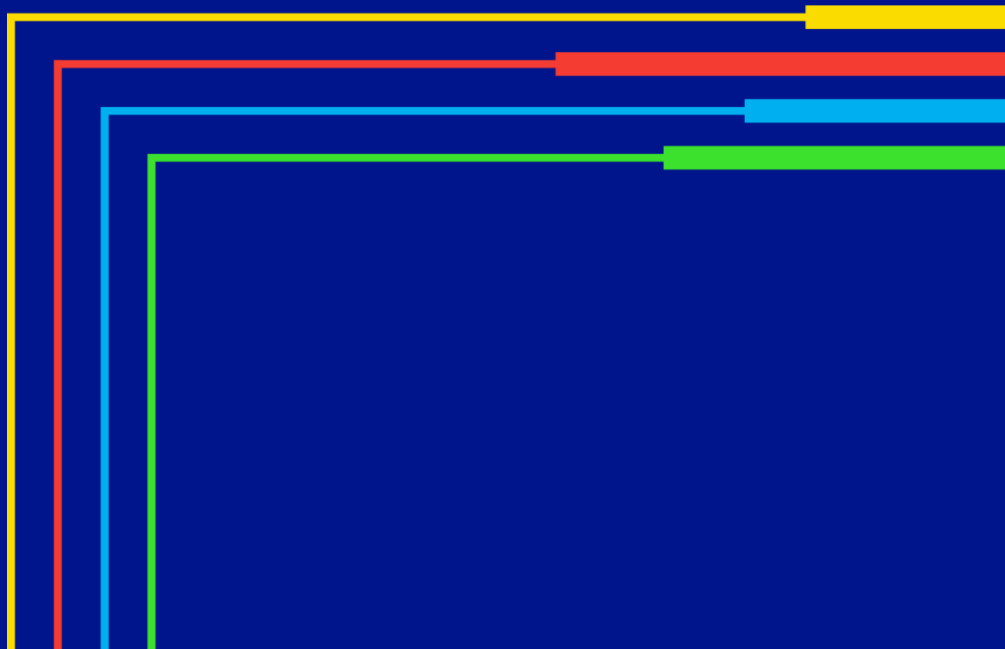
Movement of capacity between offtakes

Action 0602: National Grid (JR) to provide a graphical diagram setting out how the direct connects would interact.

Please see associated spreadsheet

02

Overruns



Entry data (October 2020 – April 2021)

	No of Overruns		Charge Quantity (mcm)		Charge Amount (£)		No of Users		No of ASEPs	
	20/21	19/20	20/21	19/20	20/21	19/20	20/21	19/20	20/21	19/20
Oct	319	129	10.84	3.40	270,470.21	34,373.94	31	21	9	8
Nov	369	98	15.83	3.77	442,615.19	10,749.94	25	17	8	9
Dec	403	123	7.63	5.41	180,741.39	35,823.08	26	18	10	7
Jan	379	200	8.73	6.64	203,889.59	69,319.21	23	25	8	10
Feb	410	117	8.31	2.93	196,899.49	30,807.88	24	15	8	8
Mar	500	160	10.90	6.48	273,012.66	82,350.69	24	24	8	7
Apr	565	146	25.93	15.64	606,193.82	57,607.67	29	20	8	9
Total*	2945	973	88.17	44.27	2,173,822.35	321,032.41	182	140		
Increase %	302.7		199.2		677.1					

Exit data (October 2020 – April 2021)

	No of Overruns		Charge Quantity (mcm)		Charge Amount (£)		No of Users		No of Offtakes	
	20/21	19/20	20/21	19/20	20/21	19/20	20/21	19/20	20/21	19/20
Oct	137	1	9.11	0.21	111,795	2,874.67	16	1	28	1
Nov	158	0	8.40	-	102,316.93	-	19	0	30	0
Dec	178	0	8.53	-	96,007.55	-	21	0	31	0
Jan	142	2	10.25	0.02	131,626.60	1.32	17	1	31	2
Feb	166	8	8.59	1.24	92,831.55	8,746.03	15	4	29	4
Mar	144	5	3.12	0.22	38,972.44	19.52	15	3	25	3
Apr	218	0	6.85	-	83,208.21	-	20	0	34	0
Total	1143	16	54.84	1.69	656,758.15	11,641.54	123	9		

Overrun by type of entry/exit point

Entry point type	Overrun charges incurred(£)	Charge quantity (mcm)	% of total Overrun charges
Beach Terminal	2,048,838.07	82.44	94.3
IP	81,284.59	3.32	3.7
LNG	30,274.57	1.28	1.4
Storage	13,425.12	1.13	0.6
TOTAL	2,173,822.35	88.17	100.0

Exit point type	Overrun charges incurred(£)	Charge quantity (mcm)	% of total Overrun charges
Power Station	498,610.09	37.97	69.2
Industrial	73,608.85	5.68	10.3
Storage	66,128.73	9.83	17.9
IP	12,758.99	0.98	1.8
GDNs	5,655.28	0.43	0.8
Total	656,761.94	54.88	100.00

Mandatory Setting of Bid Parameters (Mod 0745S)

Action 0603 National Grid (ASt) to confirm what mandatory parameters are being implemented as part of Modification 0745S – Mandatory Setting of Bid Parameters.

From 1st October 2021 Shippers would be unable to place bids in certain auctions unless they have set bid parameters for **Bid Price and Bid Volume**, where Bid Value (£) = Bid Price x Bid Volume

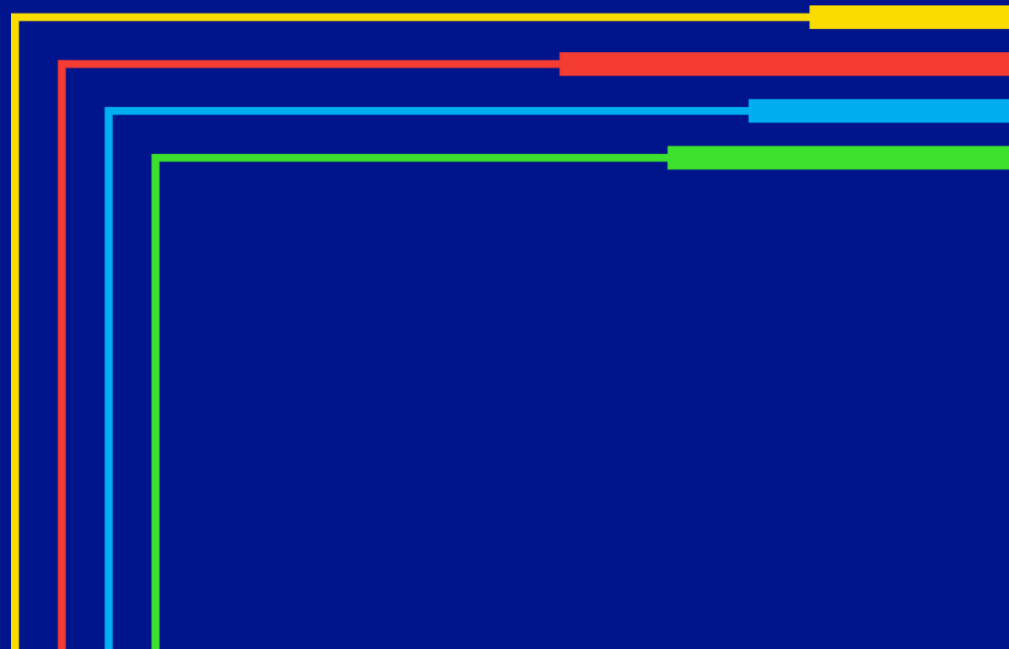
The following short term auctions will be affected

Gemini Entry	Gemini Exit
DADSEC	DADNEX
WDDSEC	WDDNEX
DISEC	DONEX

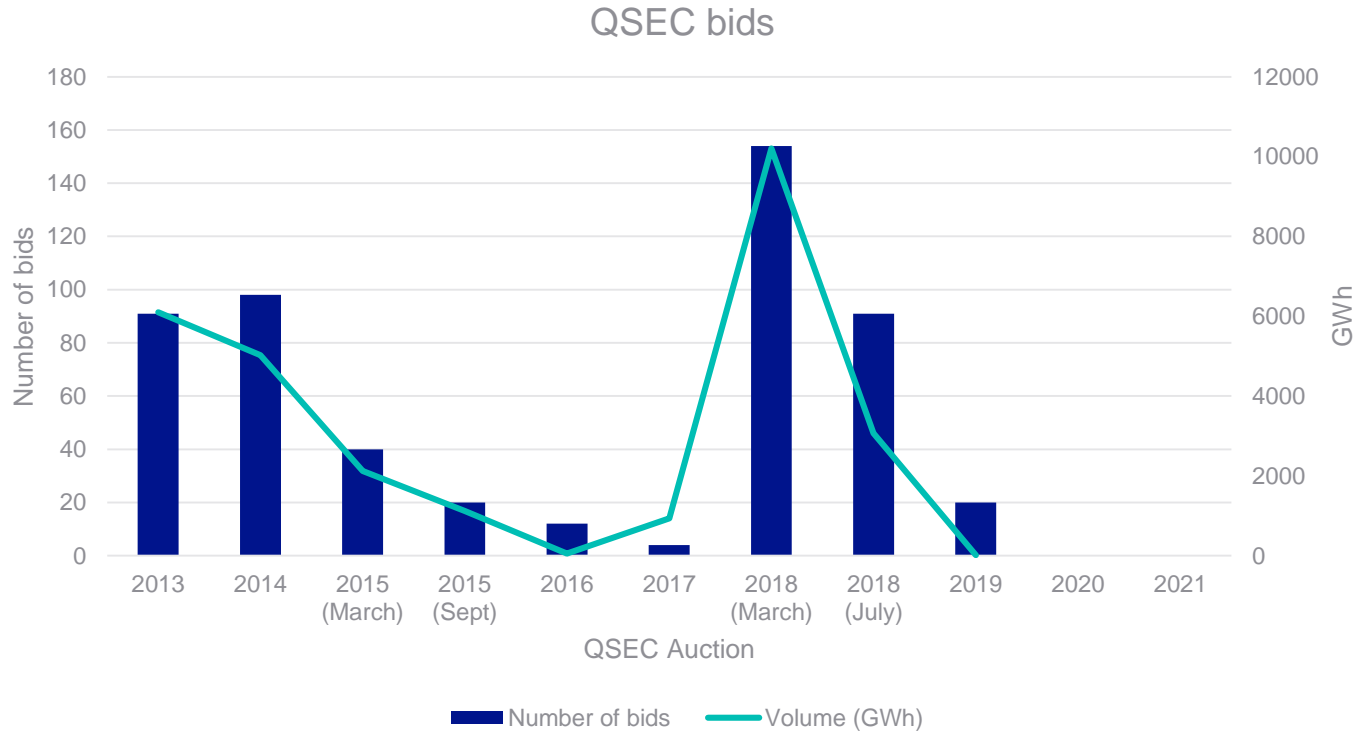
03

Products

national**grid**



QSEC Bids



CAM Code / domestic capacity auction differences

Auction	CAM Code capacity auctions	Domestic capacity auctions
Yearly	Y-5 to Y-15 Several concurrent auctions, ascending clock auction	N/A
Quarterly	Four annual quarterly auctions held during each gas year (Q1-Q4 Sept; Q2-Q4 Dec; Q3-Q4 Mar; Q4 Jun), ascending clock auction	Y-2 to Y-16, capacity sold in quarterly strips, held annually in March, open for 10 days and allocated in May. Ad hoc triggered by PARCA
Annual Monthly	N/A	Y to Y-1, capacity sold in monthly strips Held annually in February. Auction window open for 4 days in 2 bidding rounds separated by 2 business days. Allocated after 5pm each day. Pay as bid, subject to minimum reserve price
Rolling Monthly	Held once per month, ascending clock auction	M-1, held monthly at month ahead stage. Pay as bid auction, subject to minimum reserve price. Opportunity to surrender any excess capacity as part of the rolling monthly trade initiation surrender stage, only allocated where there is demand.
Weekly	N/A	D-10, capacity sold in weekly strips
Day Ahead	Auction held once per day, uniform price	D-1, daily product Allocated day ahead at 2pm, 5pm and 1am. Enter bids 7 days before.
Within-day	Auction held every hour (first bidding round closes at 1:30 / 0.30 day ahead, last bidding round 0.30 / 23.30 within day), uniform price	Unsold obligated at day ahead . Open 7 days before Bids allocated hourly.
Interruptible	Offered on all of the auctions	Only available at the day-ahead stage

QSEC Auction set-up process

	Process	Estimated Time Taken to Complete (hours)
Retainer	Establish Quantities (including review and approval)	8
	Draft Invitation Letter	2
	Review & Approve Invitation Letter	3
	Distribute Invitation Letter	1
	Retainer Windows (Windows 1 & 2)	4
QSEC	Establish Quantities	15
	Review & Approve Quantities	15
	Establish Prices	1
	Draft Invitation Letter	4
	Review & Approve Invitation Letter	3
	Distribute Invitation Letter	1
	Define Auction (including review and approval)	2
	Setup Auction (including review and approval)	3
	Define Quantities (including review and approval)	8
	Define Prices (including review and approval)	1
	Publish Auction (including review and approval)	1
	Interim Bid Windows 1-10 (includes publishing necessary results/reports)	2
	Final Allocation (includes Process Deal and Allocation Verification)	3
	Final Reporting (includes preparation & distribution of QSAR Report & Allocation Letter)	2
TOTAL HOURS	79	

national**grid**