

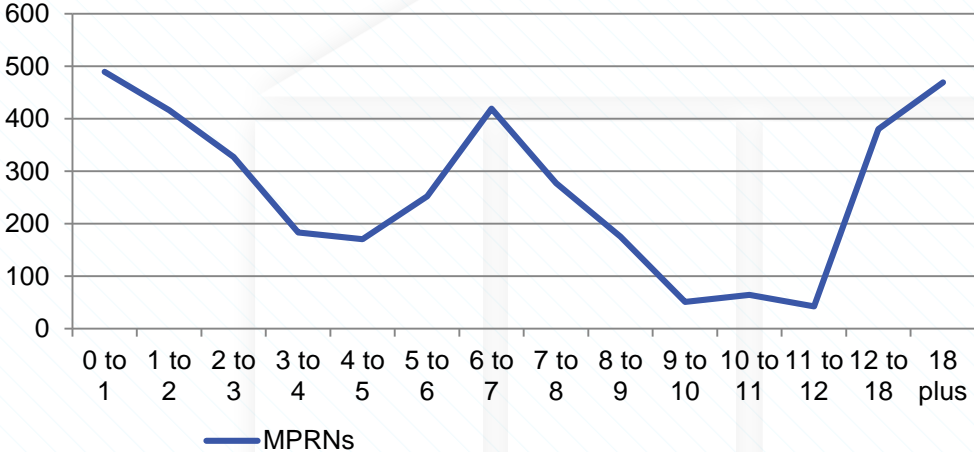


Faulty Meters Analysis

10th September 2019 Update

Class Breakdown (MPRNs)

Total Faulty MPRNs Age Profile

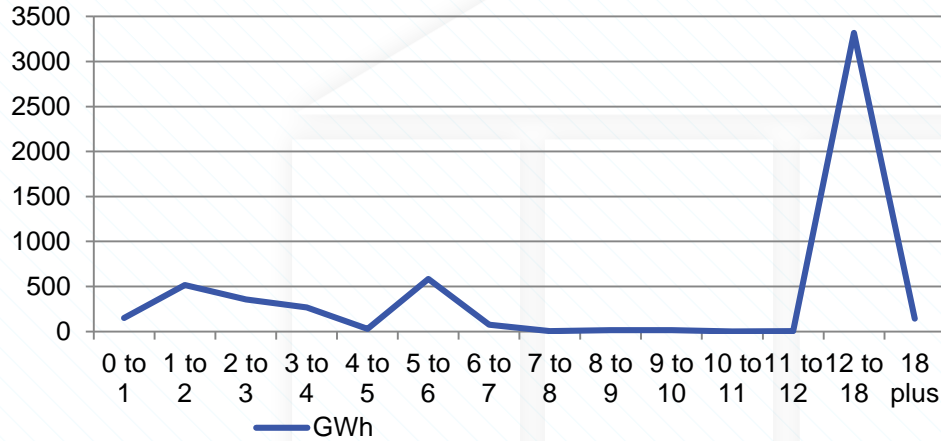


One shipper with 49% of C4 MPRNs 12-18 Months and 24% of MPRNs in 18 plus

| Count of MPRNs | Age Profile | | | | | | | | | | | | | | |
|----------------|-------------|--------|--------|--------|--------|--------|--------|--------|--------|---------|----------|----------|----------|---------|-----|
| Class | 0 to 1 | 1 to 2 | 2 to 3 | 3 to 4 | 4 to 5 | 5 to 6 | 6 to 7 | 7 to 8 | 8 to 9 | 9 to 10 | 10 to 11 | 11 to 12 | 12 to 18 | 18 plus | |
| 1 | | 1 | 2 | 1 | 1 | | 2 | | | | | | | 1 | 1 |
| 2 | | 1 | 5 | 2 | | 1 | 2 | 3 | | 1 | 1 | | | 36 | 3 |
| 3 | | 5 | 6 | | | | | | | | | | | 1 | 1 |
| 4 | | 482 | 403 | 324 | 182 | 169 | 248 | 416 | 277 | 174 | 50 | 64 | 42 | 342 | 464 |

Class Breakdown (GWh AQ Volume)

Total GWh AQ Vol Age Profile



One shipper with 80% of C2 vol and 100% of C1 vol

1 shipper with 57% of C4 Volume (9 MPRNs)

2 shippers with equal volume in C2 (3 MPRNs)

| GWh AQ Vol Class | Age Profile | | | | | | | | | | | | | |
|------------------|-------------|--------|--------|--------|--------|--------|--------|--------|--------|---------|----------|----------|----------|---------|
| | 0 to 1 | 1 to 2 | 2 to 3 | 3 to 4 | 4 to 5 | 5 to 6 | 6 to 7 | 7 to 8 | 8 to 9 | 9 to 10 | 10 to 11 | 11 to 12 | 12 to 18 | 18 plus |
| 1 | 136 | 322 | 273 | 264 | 0 | 537 | 0 | 0 | 0 | 0 | 0 | 0 | 2455 | 24 |
| 2 | 9 | 178 | 77 | 0 | 26 | 30 | 51 | 0 | 9 | 12 | 0 | 0 | 848 | 70 |
| 3 | 0 | 0 | 0 | 0 | 0 | 0 | 0 | 0 | 0 | 0 | 0 | 0 | 0 | 0 |
| 4 | 6 | 13 | 3 | 2 | 2 | 17 | 24 | 3 | 7 | 2 | 1 | 2 | 14 | 48 |

Associated AQ volume / meter type split

| Meter Type | Total GWH | % Of Total | CAM Activity Commentary |
|-------------------|-----------|------------|--|
| Traditional / AMR | 5449 | 99.70% | 1 shipper has 72% of total AQ Volume (4 meters in C1 with associated 3076 GWH AQ volume and 32 meters in C4 with combined associated 719 GWH) |
| SMART | 16 | 0.30% | |

- Further work underway to determine traditional / AMR split
- Recommend to re-run analysis after implementation of XRN 4991 to detail how C3 GWh changes with further class uptake?

MPRN share and average days faulty

| Total Number of Faulty Meter MPRNs | Average Days Faulty | Potential CAM Activity? |
|------------------------------------|---------------------|---|
| 3714 | 242 | <ul style="list-style-type: none"> > CAMs to approach shipper with largest share (46%) of MPRNs (av number of days 154, associated 21 GWh) > CAMs to approach shipper with 2nd largest (15%) of MPRNs (av number of days 360, associated 6 GWh) |

Summary

- As per action/s outlying shippers have been identified based on:

- > Number of MPRNs flagged as being faulty
 - > Associated AQ Volume
 - > Age profile of Faulty Meter Flag
 - > Average time taken to resolve

Next steps

- CAMs to continue discussions with shippers and report back to October PAC with update
- Add further meter type (AMR split from traditional) reporting and re-run (to include post-XRN4991 implementation) for October committee