



EUC09 Sites not in Class 1

PAC Update December 2019

Recap

- UIG Task Force identified sites with AQs over the Class 1 threshold that are still in Class 3 or 4 (Issue 3.2.1)
- Obligations set out in UNC G1.6.15
- These sites should be re-confirmed as Class 1 by the Shipper after 3 consecutive AQ calculations above the threshold in a six-month period, or after 18 months if every calculated AQ is above the threshold
- These sites could be contributing to daily UIG if their usage pattern is very different to the EUC09B NDM profile
- Raised at UNC UIG Workgroup in January – recommended engagement by Xoserve and monitoring at PAC – last update provided at September PAC

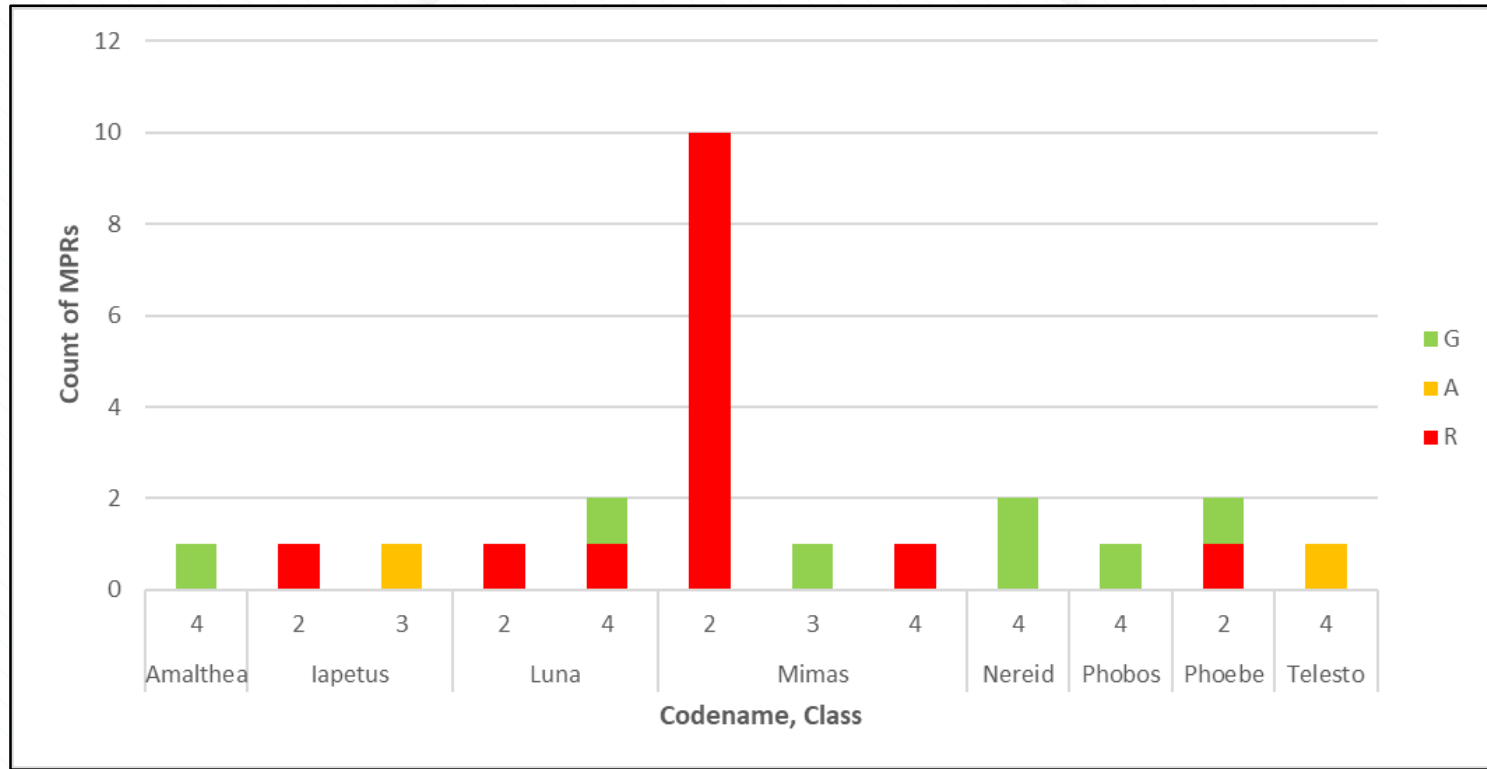
Overview of Statistics – Changes since September

- As not yet included in the PARR, these stats have used the anonymised “Moon” codes
- Stats include Class 2 and 3 sites **as at 1 November** – should be converted to Class 1 once qualifying criteria are met
- 2 Class 3 or 4 sites, total AQ 0.1 tWh (decrease of 1 sites)
- 13 Class 2 sites, total AQ 1.8 tWh (increase of 2 sites)
- Plus 2 sites which are over threshold and close to qualifying criteria (total 0.1 tWh), 7 sites over threshold, not close to qualifying (total 0.4 tWh)

Summary of Count and Rolling AQ

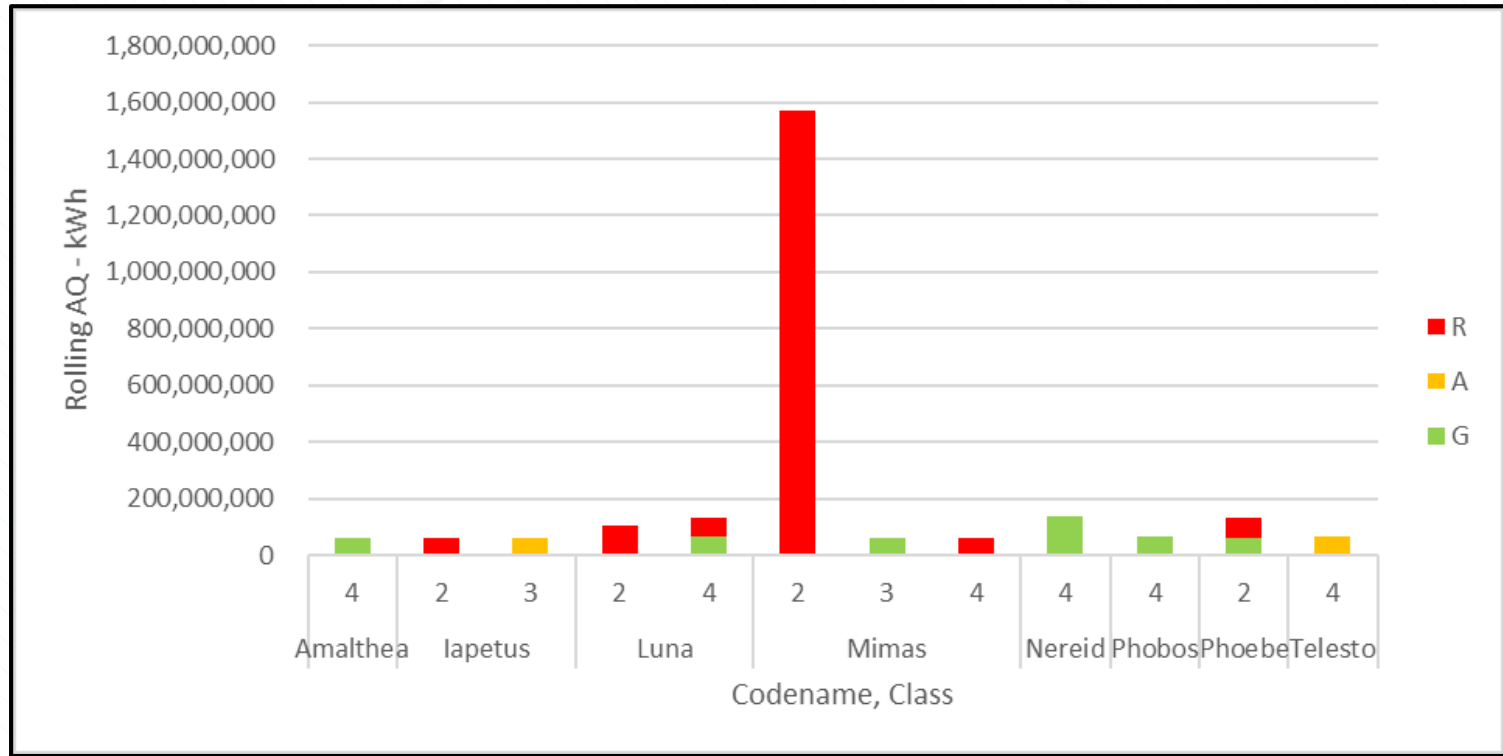
	1 September		1 November	
	Count	Total AQ	Count	Total AQ
Class 2 - RED	11	1.0 tWh	13	1.8 tWh
Class 3 & 4 - RED	3	0.3 tWh	2	0.1 tWh
Total - RED	14	1.3 tWh	15	1.9 tWh
Amber sites	1	0.05 tWh	2	0.12 tWh

EUC09 Sites as at 1 Nov. 2019 – COUNT, by Class



R = G1.6.15 criteria met, A = Close to qualifying period met, G = newly increased to EUC09

EUC09 Sites as at 1 Nov. 2019 – AQ, by Class



R = G1.6.15 criteria met, A = Close to qualifying period met, G = newly increased to EUC09

Observations

- Now four Shippers with Red sites this month (down from 5)
- 14 of the Red sites had a meter reading loaded in October – good news for reconciliation and AQ accuracy
- Of the 15 sites this month, 7 were present in September, 8 are new

The logo for xserve is displayed in a light blue color. It features a stylized 'x' composed of two overlapping chevron shapes pointing towards each other, followed by the word 'serve' in a lowercase, sans-serif font. The entire logo is centered within a white rectangular frame that has a thin grey border and is set against a background of fine, light blue diagonal lines.

xserve