

JANUARY 24 - GEMSERV

PARR DASHBOARDS

16TH JANUARY 2024



Gemserve

MAKING THINGS THAT MATTER WORK BETTER

2A.1 ESTIMATED & CHECK READS - PRODUCT CLASSES 1 & 2

Report measures the average percentage across all Shippers portfolio in each market, where estimated reads were provided. Count of each Shippers portfolio where check reads were not provided

PC1

Industry movement:

↑ 1.85% - Monthly change
 ↓ 3.01% - Annual change

Monthly changes:

↑ 15.79% Marigot ↓ 4.45% Manama
 ↑ 13.75% Sarajevo ↓ 1.66% Valetta
 ↑ 10.00% Monaco ↓ 1.02% Philipsburg

PC2

Industry movement:

↓ 0.85% - Monthly change
 ↓ 10.17% - Annual change

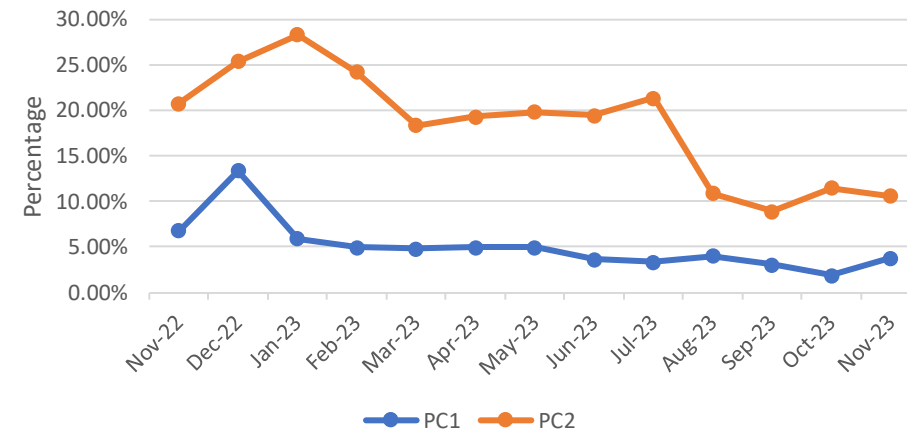
Monthly changes:

↑ 30.00% Washington ↓ 16.07% Valetta
 ↑ 18.50% Abuja ↓ 15.54% Lisbon
 ↑ 1.26% Papeete ↓ 8.39% Brazzaville

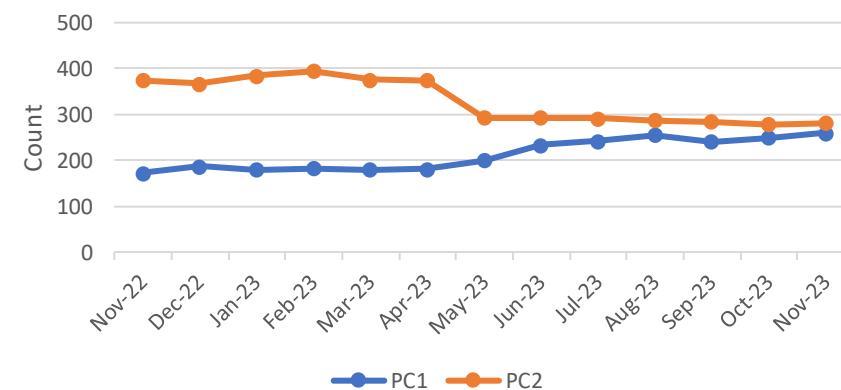
Observations:

- An RFI letter was issued to five Shipper parties in respect of PC2 read performance, the purpose of the RFI was to better understand challenges faced in meeting PC2 UNC read requirements. PAFA presented its analysis of RFI responses received at the December PAC meeting (12/12/2023) and will be looking to issue a letter to the parties that were issued the RFI.

2A.1 Percentage of Estimated Reads for PC1 & PC2

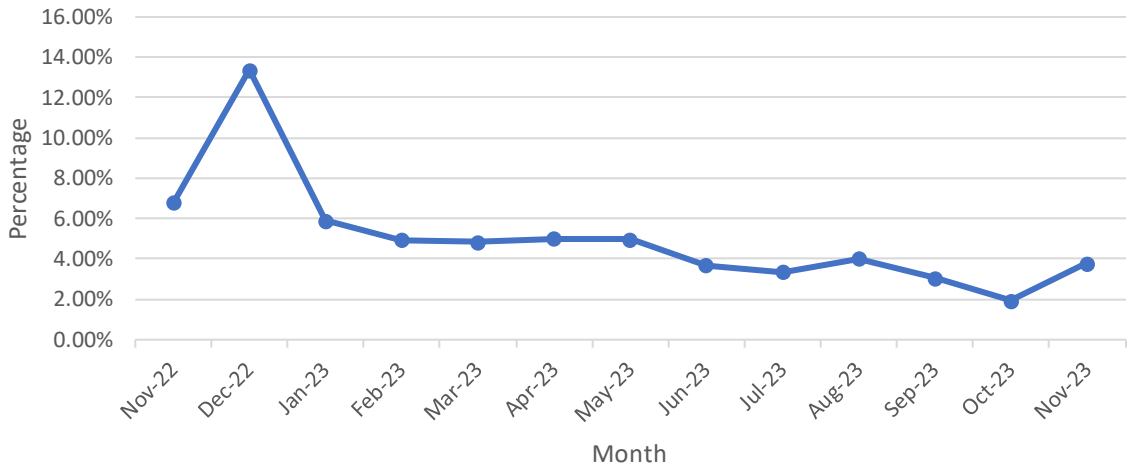


2A.1 Count of Check Reads not completed for PC1 and PC2

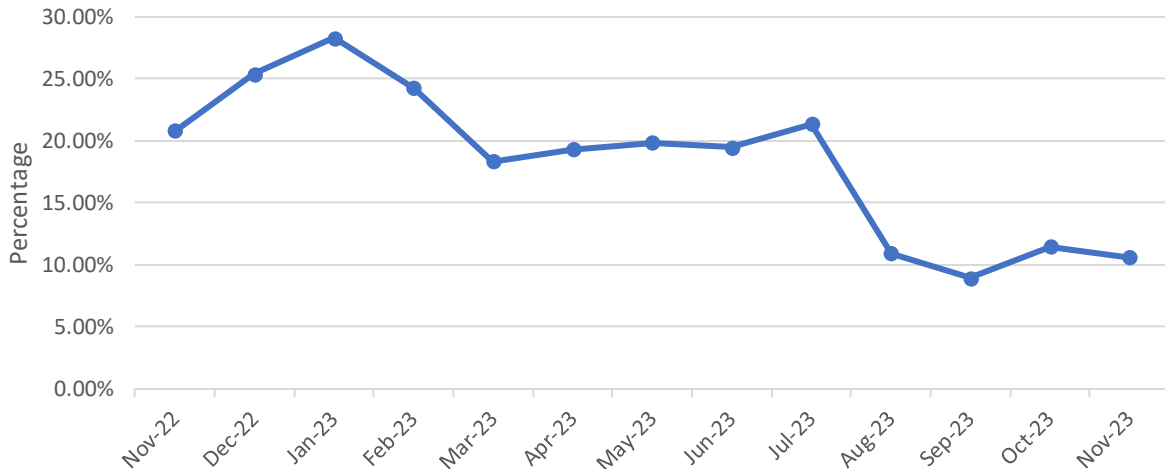


2A.1 ESTIMATED & CHECK READS - PRODUCT CLASSES 1 & 2

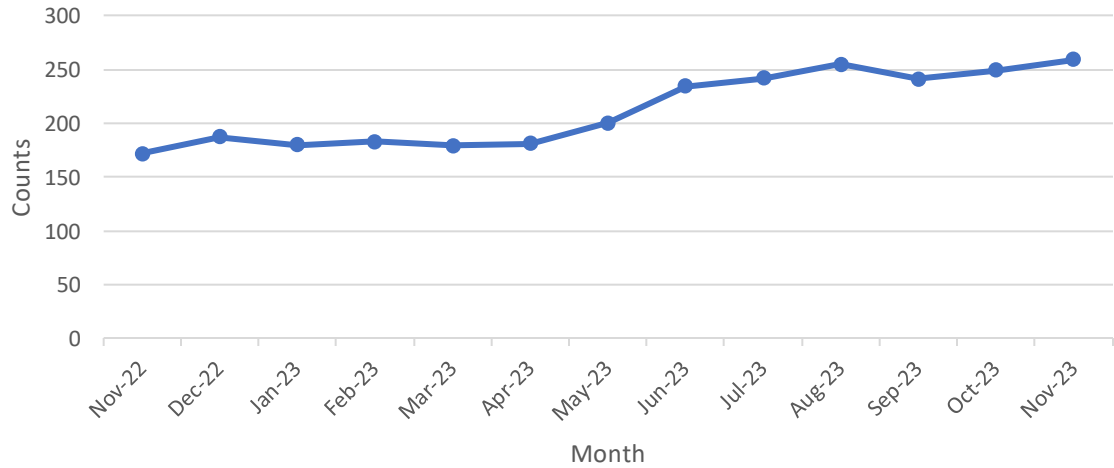
2A.1 PC1 Estimated Read Totals



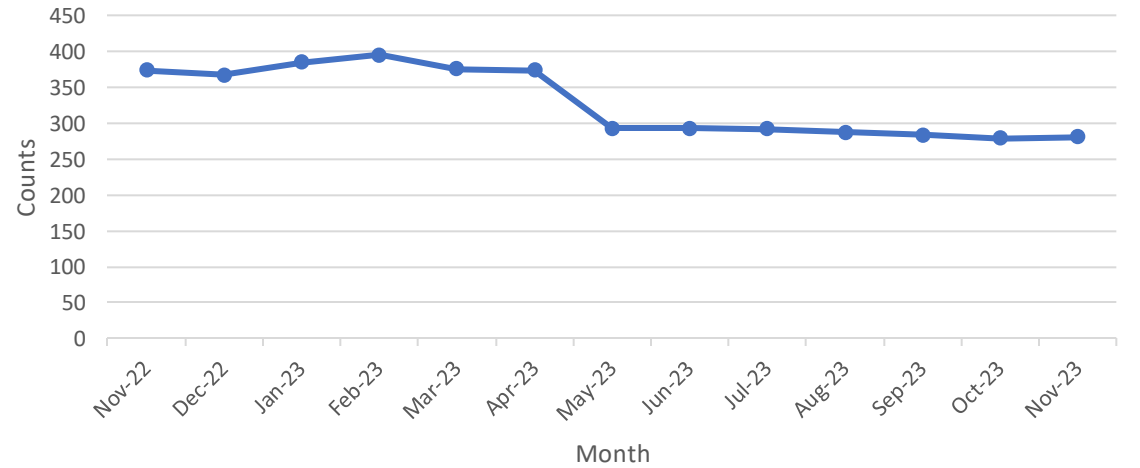
2A.1 PC2 Estimated Read Totals



2A.1 PC1 Check Reads Total

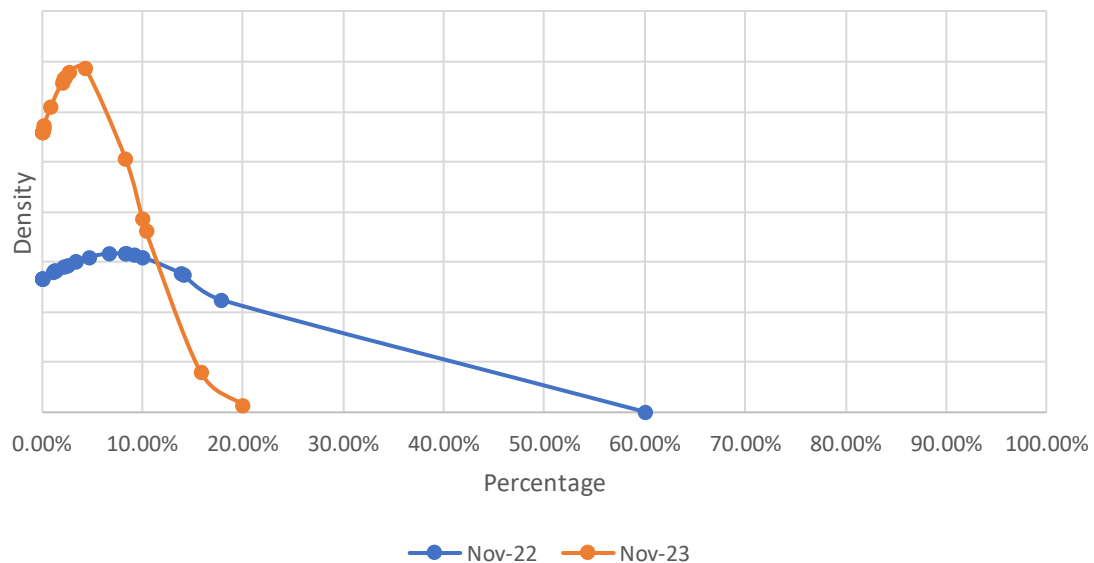


2A.1 PC2 Check Read Totals

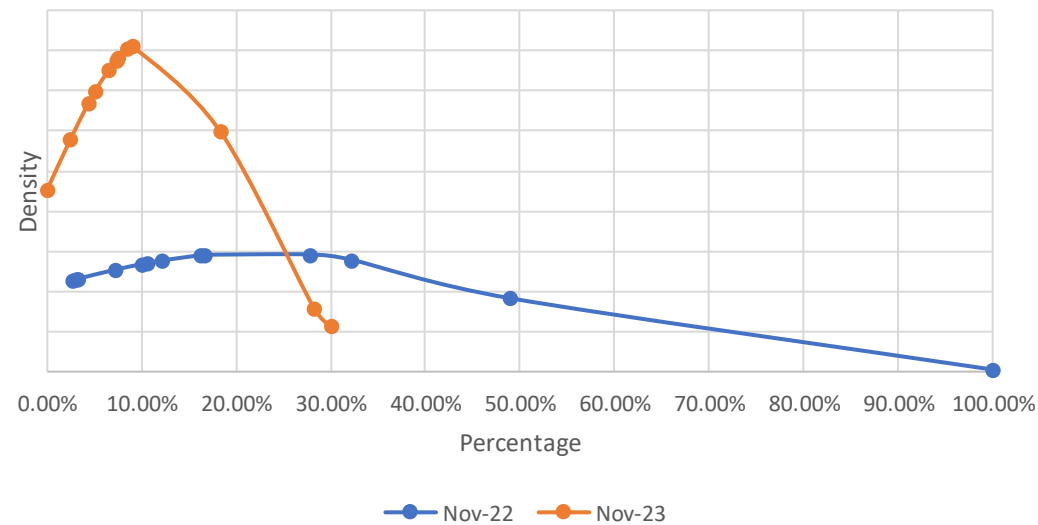


2A.1 ESTIMATED & CHECK READS - PRODUCT CLASSES 1 & 2

2A.1- 12 Month comparison (Average of PC1 Estimated Reads)



2A.1- 12 month comparison (Average of PC2 Estimated Reads)



2A.2 – NO METER RECORDED



Report measures the percentage of each Shipper's portfolio where no meter is recorded in the Supply Point (SP) Register

PC1

0% for all Shippers

PC2

0% for all Shippers

PC3

Highest Shippers:

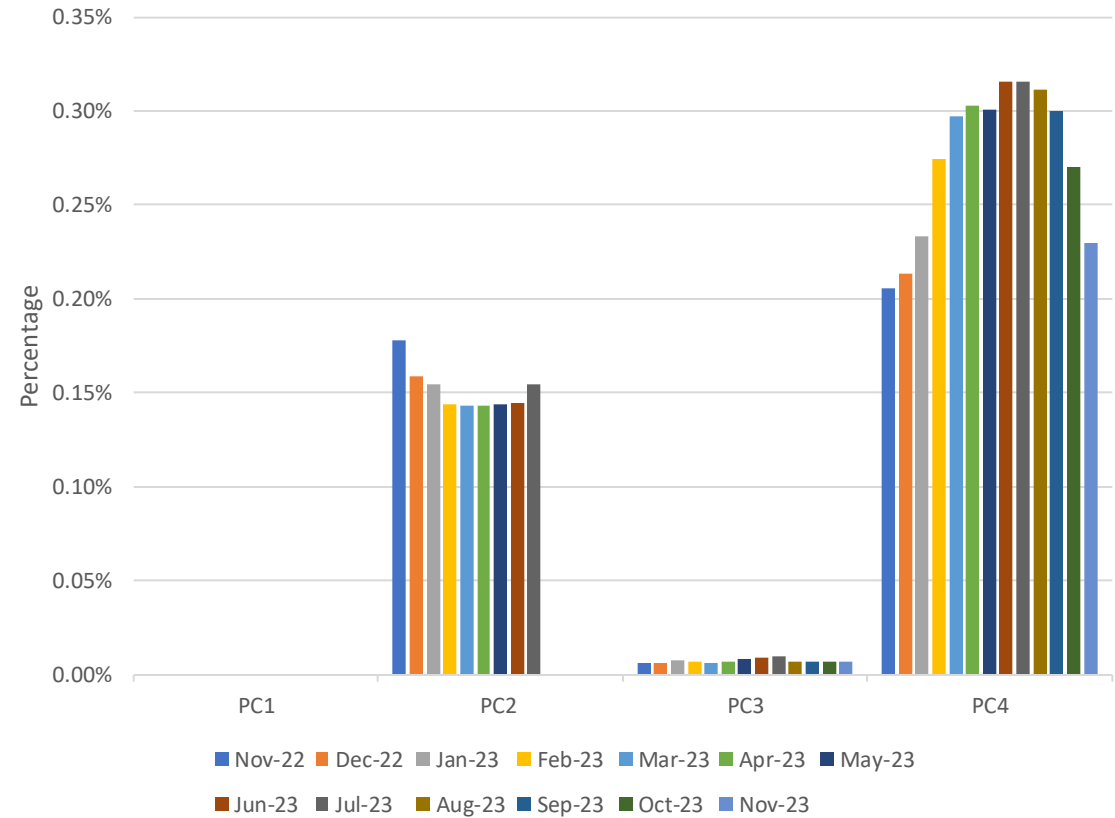
Brazzaviile 0.02%
 Luanda 0.02%
 Dili 0.05%
 Rome 0.06%

PC4

Highest Shippers:

Maputo 12.50%
 Luxembourg 38.89%
 Tehran 100%

2A.2 Percentage of No Meter recorded by Product Class



Observations:

- The volume of PC4 SP's where no meter is recorded within the CDSP system has dropped to its lowest level (48451) since February 2023 (55502). This is primarily driven by one Shipper party in markedly reducing its volume of SPs within this category
- Shipper Hamilton has continued to see a month on month decrease in the volume of PC4 SPs whereby no meter is recorded within the CDSP system within the reporting period (November 2022 – November 2023)

2A.3 NO METER RECORDED AND DATA FLOWS RECEIVED



Report measures the percentage of each Shipper's portfolio where no meter is recorded in the Supply Point Register and data flows received

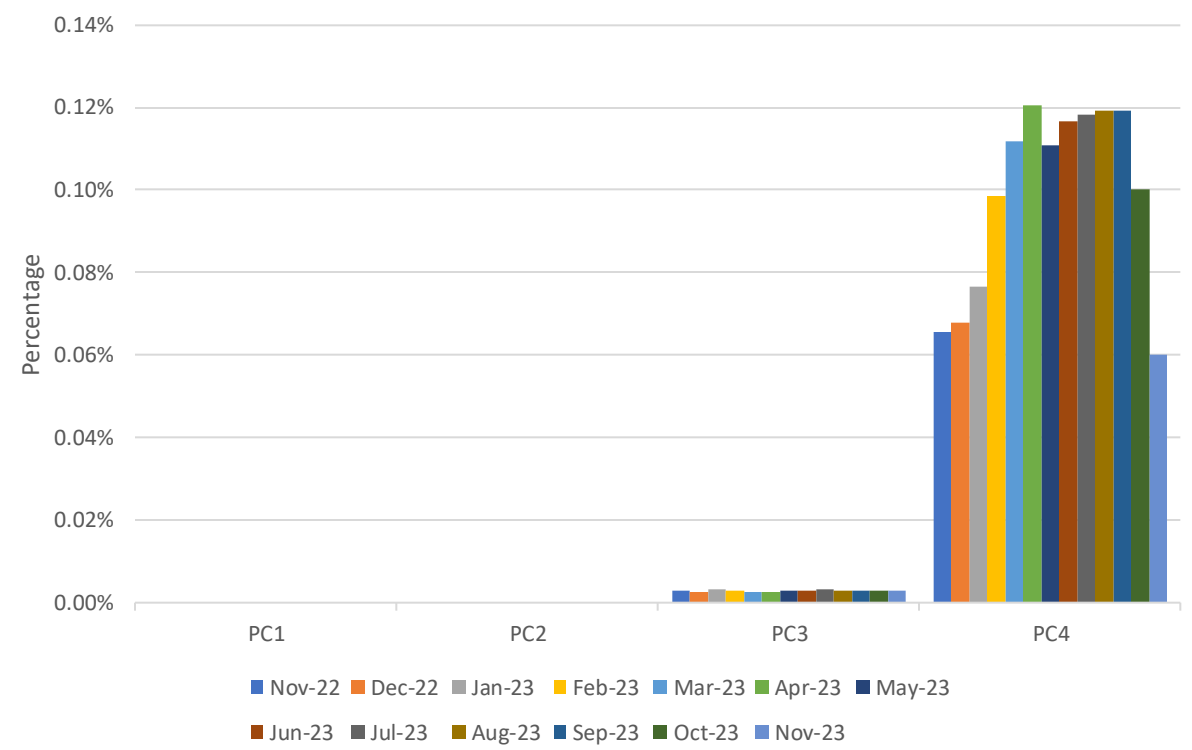
PC1
0% for all Shippers

PC2
0% for all Shippers

PC3
Highest Shippers:
Brazzaville 0.01%
Dili 0.02%
Rome 0.02%

PC4
Highest Shippers:
Belmopan 0.59%
Mogadishu 0.60%
Ashgabat 1.50%

2A.3 No Meter recorded by Product Class and data flows received



Observations:

- Shipper Yerevan has continued to see a notable rise in the volume of PC4 SPs whereby a dataflow has been submitted yet no meter is recorded within the CDSP system in the last 7 reporting months (May 2023 to November 2023)
- Shipper Paramaribo has seen a month on month increase in the volume of PC4 SPs whereby a dataflow has been submitted yet no meter is recorded within the CDSP system within the reporting period (November 2022 – November 2023)
- Shipper Brazzaville has continued to see a substantial reduction in the volume of PC4 SPs whereby a dataflow has been submitted yet no meter is recorded within the CDSP system within the last calendar month

2A.4 - SHIPPER TRANSFER READ PERFORMANCE

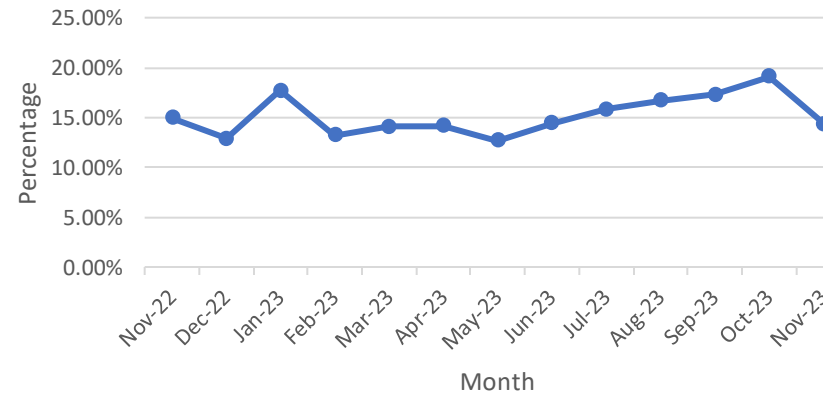


Report measures the percentage of Shipper portfolio of opening meter readings provided by the incoming Shipper passing read validation following transfer of ownership

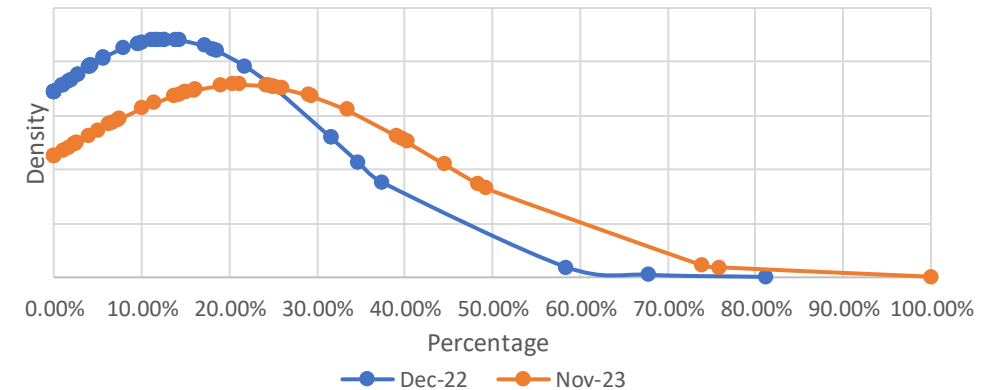
Industry movement:

- ↓ 4.75% - Monthly change
- ↓ 0.62% - Annual change

2A.4 Percentage of opening meter reads provided by industry total



2A.4- 12 Month Comparison of Shipper Transfer Read Performance



Observations:

- Shipper Transfer Read Performance (measured across all PC categories) of which entails the provision of an opening meter reading by the incoming Shipper has remained under 25% for the reporting period
- Shipper party Doha has achieved a 12-month average figure of 74.71%, this is by far the highest percentage achieved (next highest is 53.17%)
- A change to PAFA DDP Transfer Read Performance reporting was delivered by the CDSP in late September 2023 (previous reports contained transfer read performance data for Class 4 SPs only as opposed to all Product Class categories)

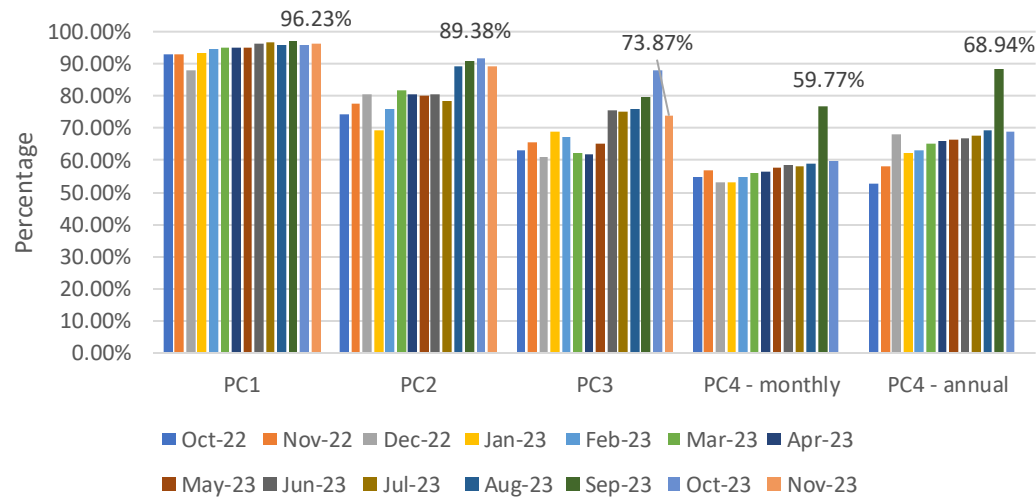
2A.5 - READ PERFORMANCE



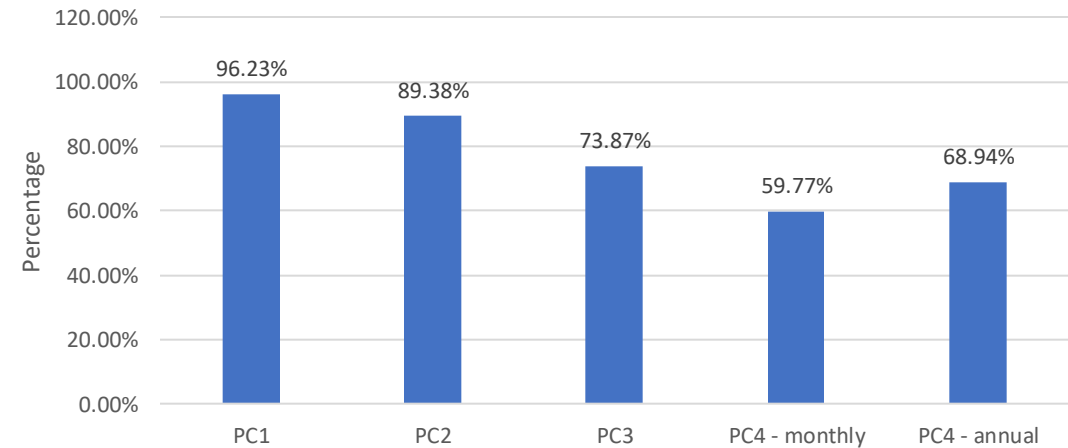
Report measures the average percentage of Shipper portfolio submitting reads in November 2023.

PC4 Monthly and Annually read measures the average percentage of Shipper portfolio submitting reads in October 2023.

2A.5 Percentage of Product Class read submissions



2A.5 Industry average percentage of Product Class read submissions



Poorest performing Shippers:

PC1

80.00% Sarajevo
84.21% Marigot
89.99% Thimphu

PC2

70.00% Washington
71.74% Abuja
81.67% Lisbon

PC3

0% Pristina
0% Hamilton
0% Maputo
0.58% Philipsburg
1.52% Zagreb
48.33% Lisbon
76.11% Valletta

PC4 (Monthly)

0% Abuja
0% Gibraltar
0% Vienna
0% Bamako
0% Luxembourg
0% Maputo
5.95% Pristina
12.00% Ashgabat

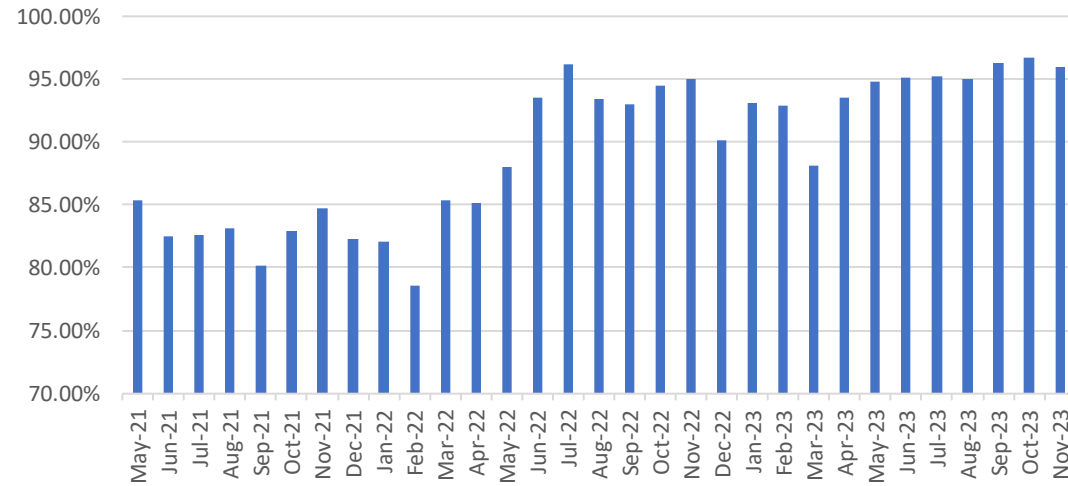
PC4 (Annual)

0% Djibouti
0% Bamako
0% Luxembourg
0% Oranjestad
0% Maputo
0% Gibraltar
0% Brazzaville
25.00% Islamabad

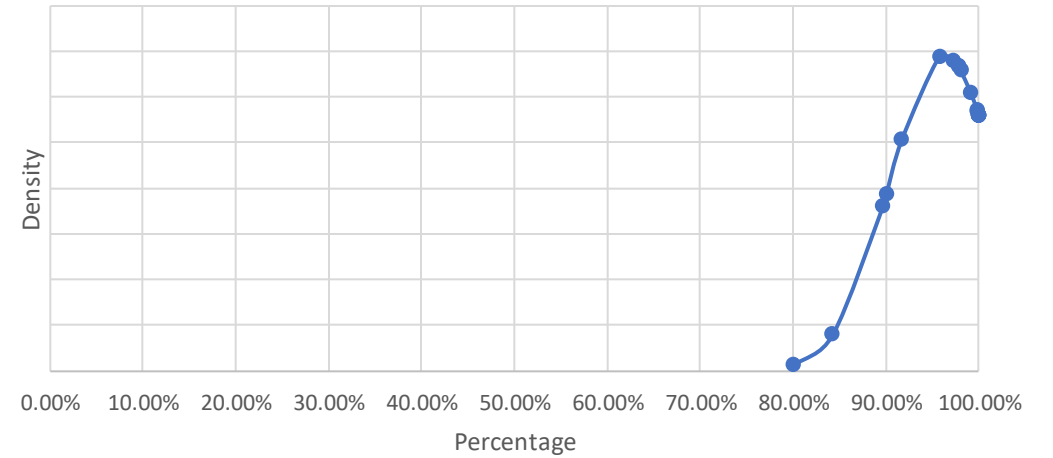
2A.5 - READ PERFORMANCE (PC1)



Read Performance - PC1



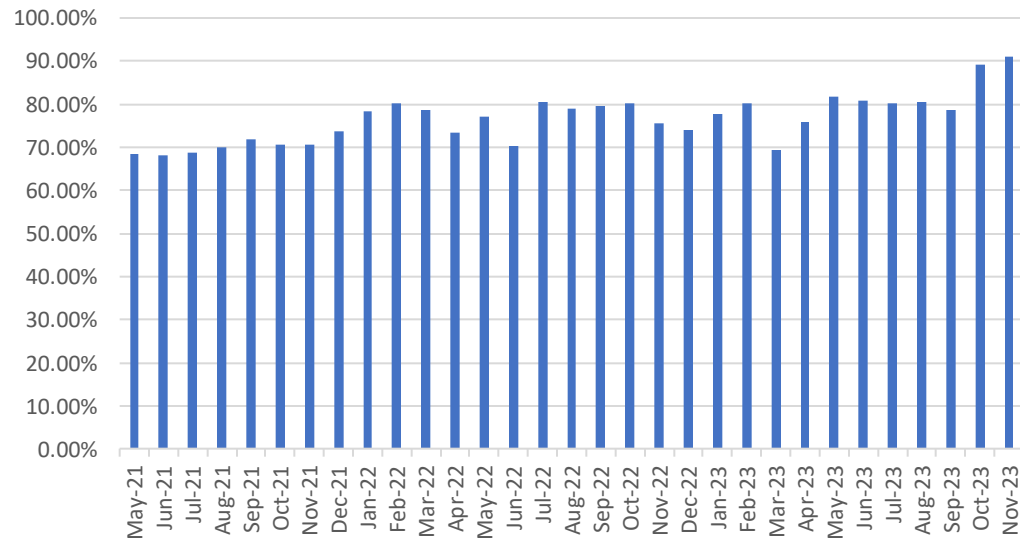
2A.5 Distribution of percentage of PC1 sites providing meter reads



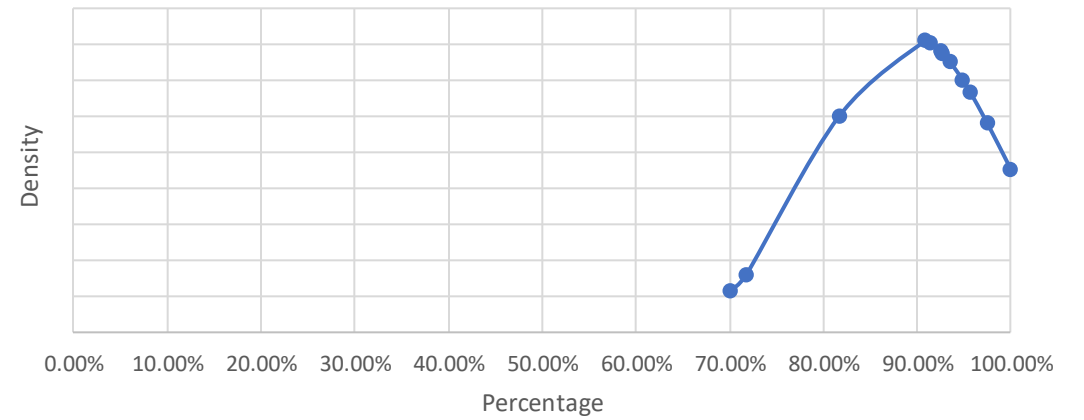
2A.5 - READ PERFORMANCE (PC2)



Read Performance - PC2



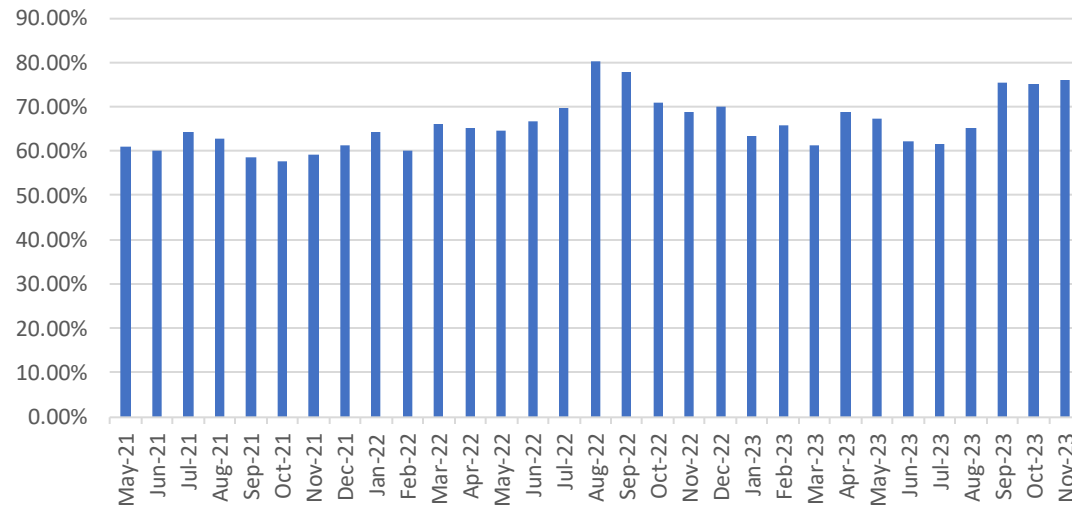
2A.5 Distribution of percentage of PC2 sites providing meter reads



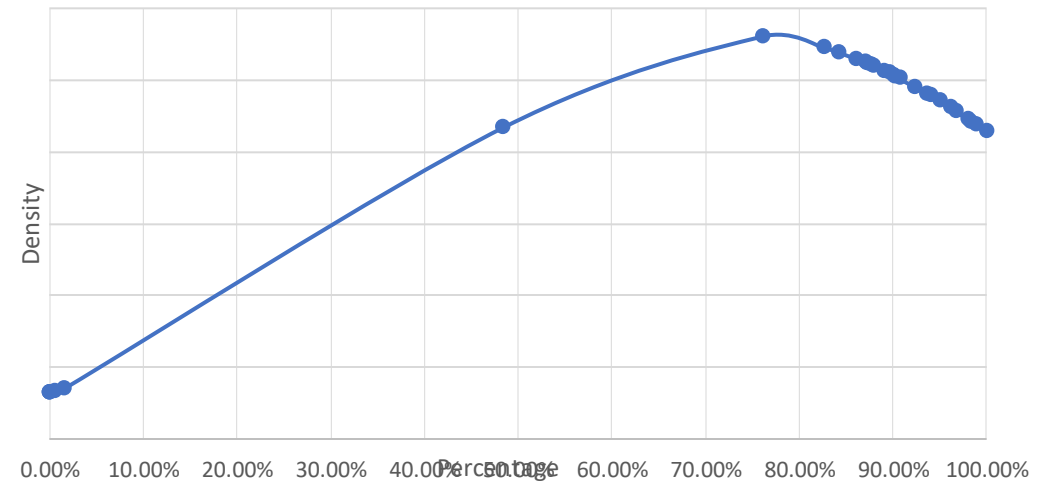
2A.5 - READ PERFORMANCE (PC3)



Read Performance - PC3



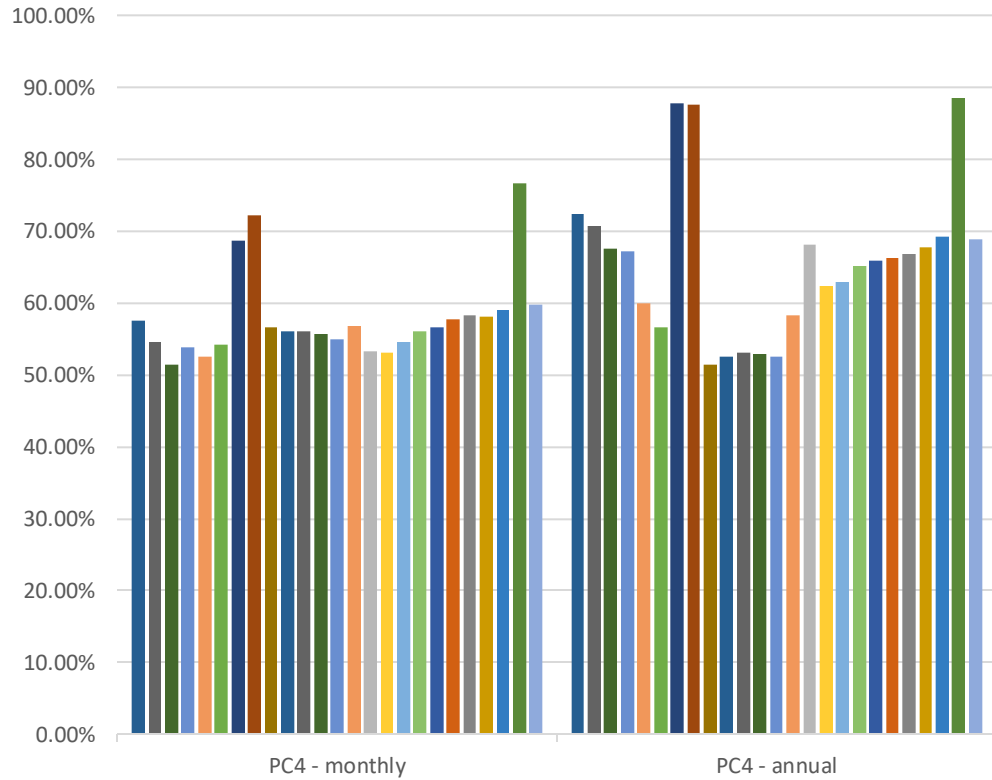
2A.5 Distribution of percentage of PC3 sites providing meter reads



2A.5 - READ PERFORMANCE (PC4)

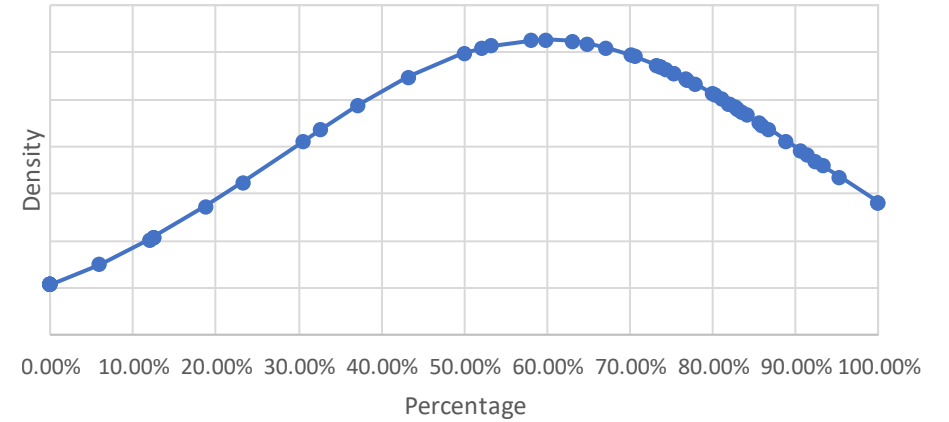


Read Performance - PC4

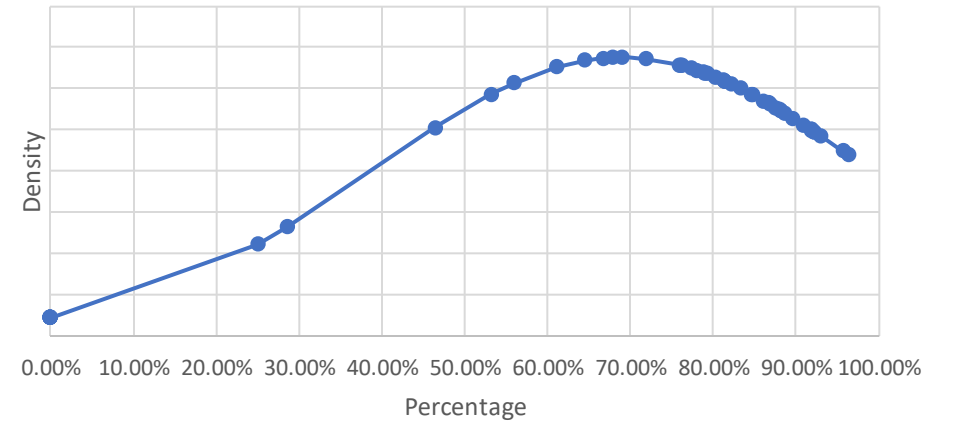


2A.5 Distribution of percentage of PC4 Monthly sites providing meter reads

- Oct-21
- Nov-21
- Dec-21
- Jan-22
- Feb-22
- Mar-22
- Apr-22
- May-22
- Jun-22
- Jul-22
- Aug-22
- Sep-22
- Oct-22
- Nov-22
- Dec-22
- Jan-23
- Feb-23
- Mar-23
- Apr-23
- May-23
- Jun-23
- Jul-23
- Aug-23
- Sep-23
- Oct-23



2A.5 Distribution of percentage of PC4 Annual sites providing meter reads

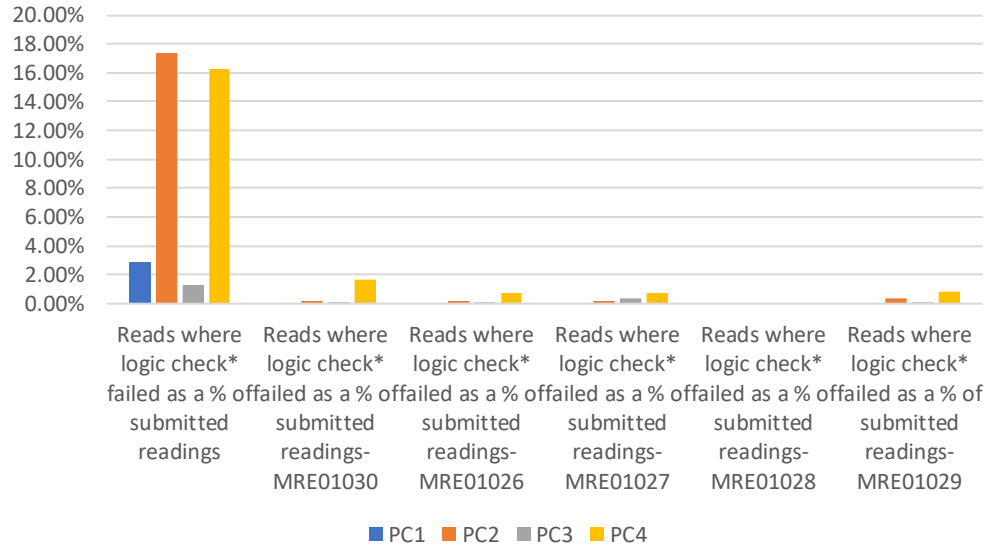


2A.6 METER READ VALIDITY MONITORING



Report measures the percentage of Shipper portfolio where readings submitted failed read validation

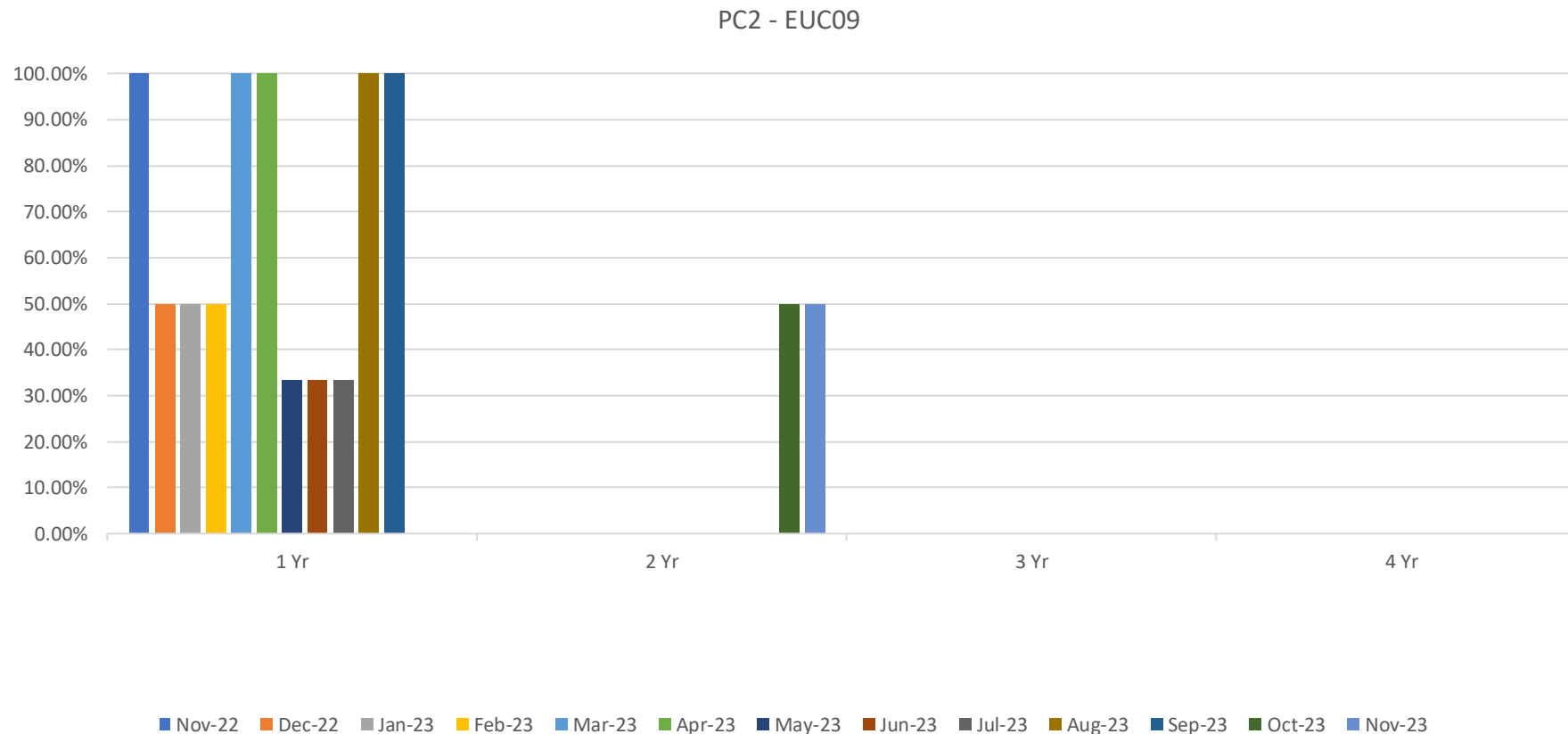
2A.6 Industry total percentage of meter read validity failure by Product Class - October 2023



- Observational letters have been issued to 7 Shipper parties whereby high levels of meter read validity volumes (>20%) alongside associated poor meter reading performance levels (<70%) have been identified in PC3 & PC4 categories

Product Class	Reads where logic check* failed as a % of submitted readings	MRE01030	MRE01026	MRE01027	MRE01028	MRE01029
1	Marigot – 25.00%	N/A	N/A	N/A	N/A	N/A
2	Philipsburg – 37.66%	Thimpu – 0.57%	Abuja – 3.93%	Philipsburg – 0.78%	N/A	Abuja – 2.62%
3	Thimpu – 75.00%	Monaco – 7.49%	N/A	Monaco – 2.88%	N/A	Monaco – 16.43%
4	Monaco – 86.82%	Wellington – 5.07%	Marigot – 3.23%	Praia – 11.11%	N/A	Canberra – 20.00%

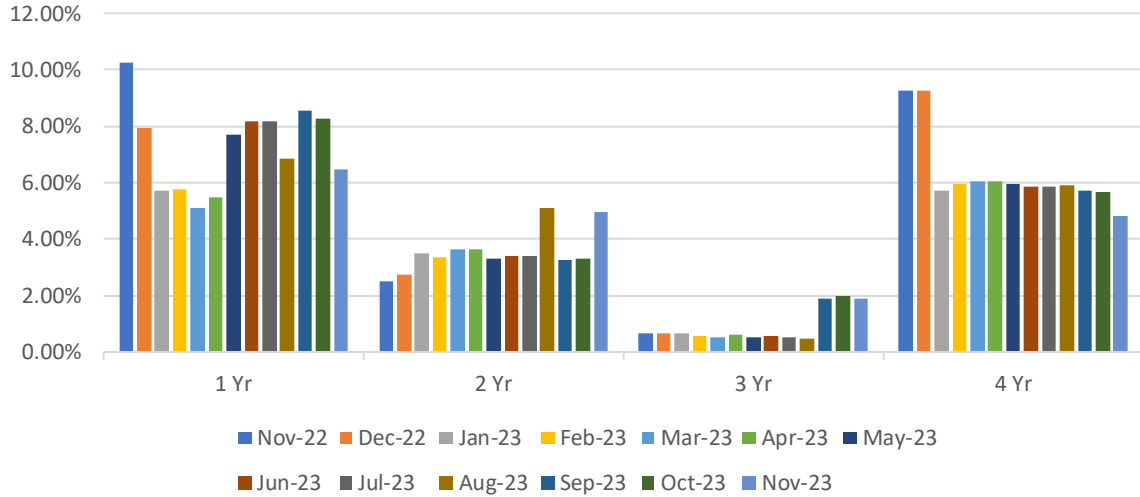
2A.7 NO READS RECEIVED FOR 1, 2, 3 OR 4 YEARS - PRODUCT CLASS 2



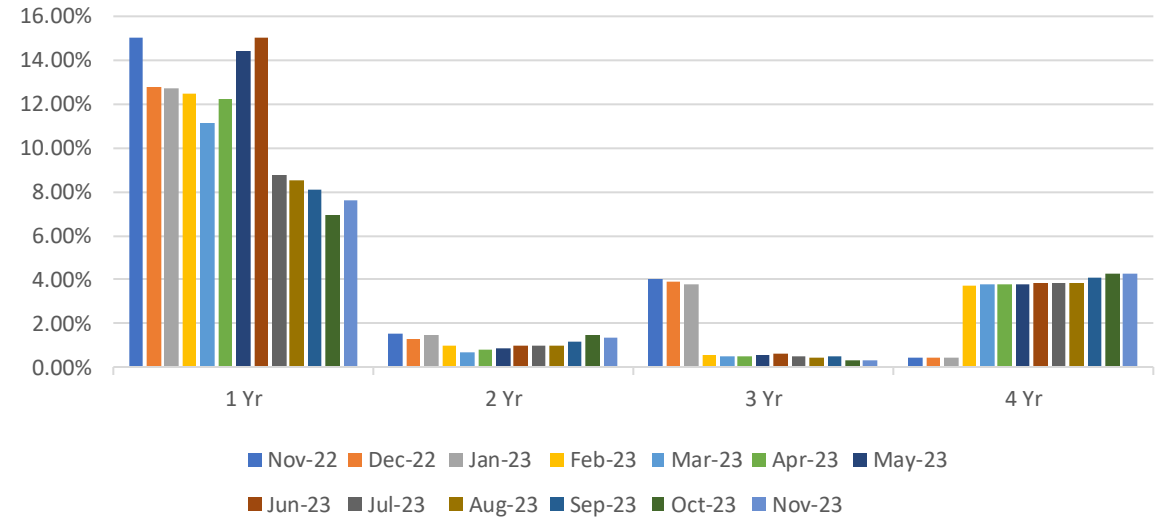
2A.7 NO READS RECEIVED FOR 1, 2, 3 OR 4 YEARS - PRODUCT CLASS 4



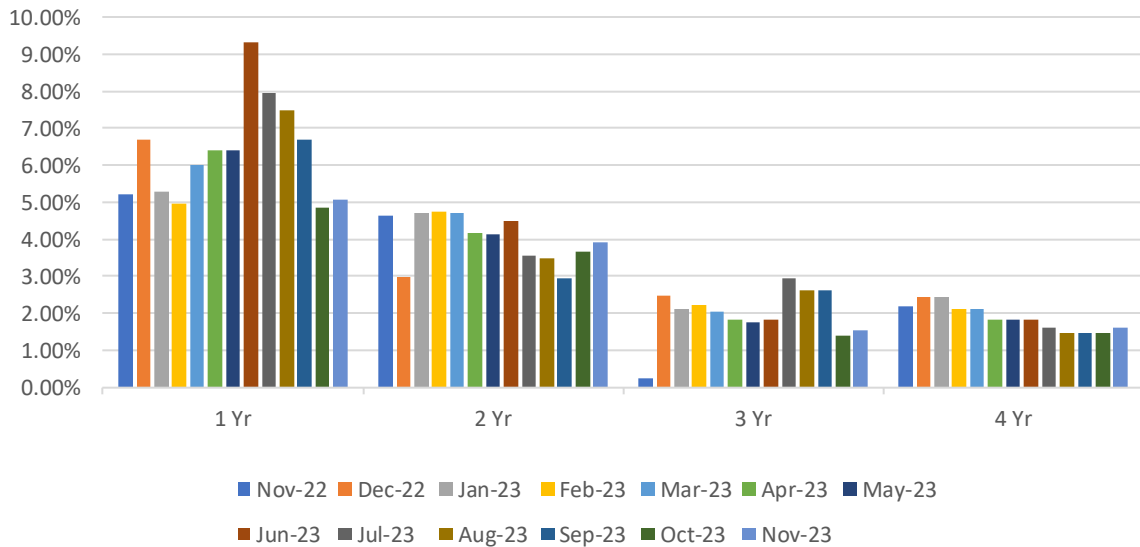
PC4 - EUC05



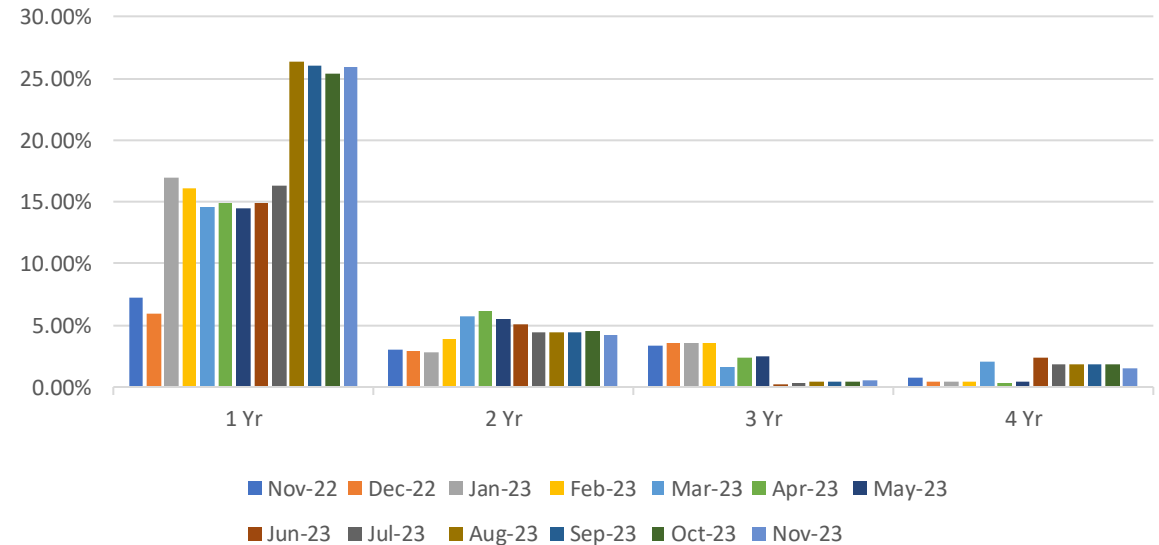
PC4 - EUC06



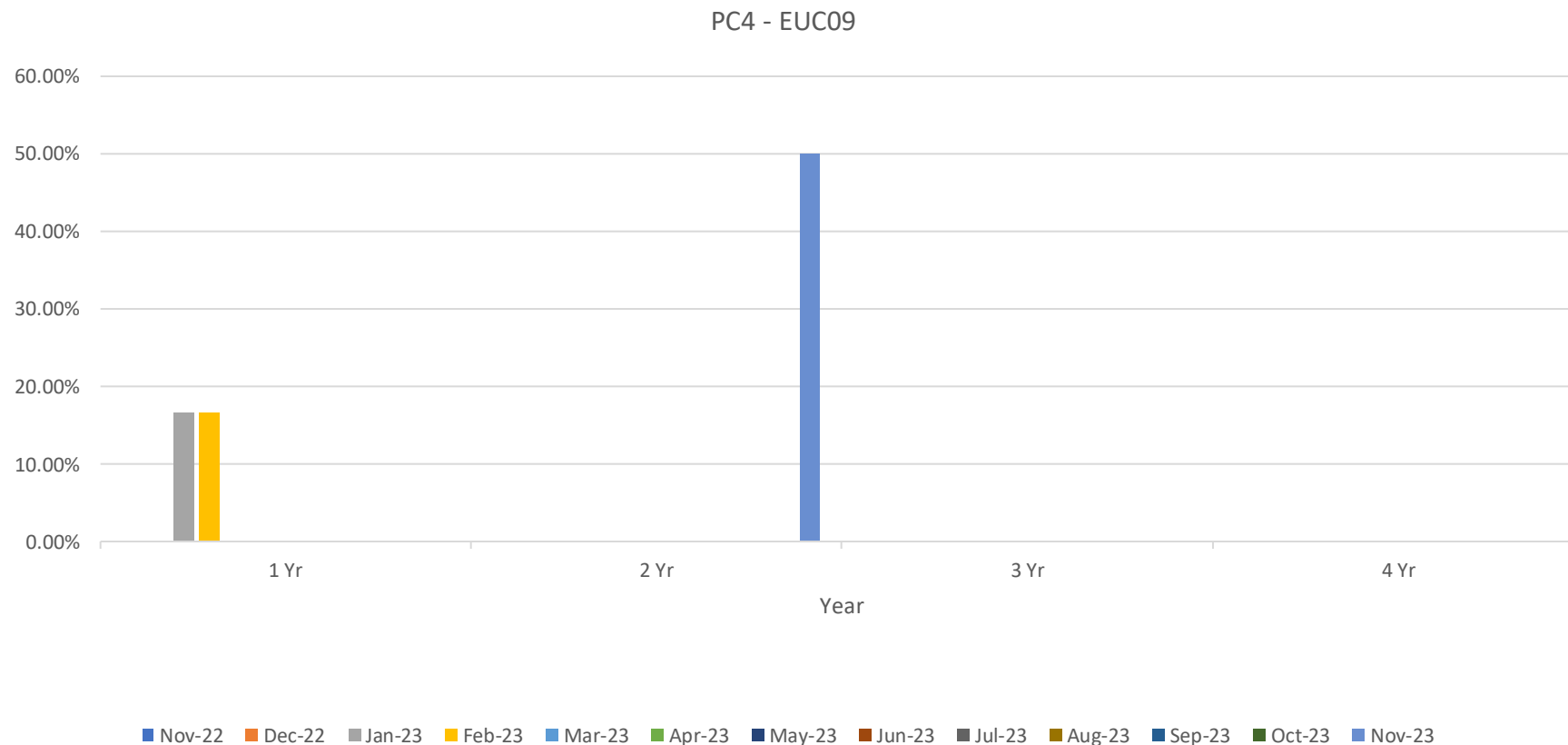
PC4 - EUC07



PC4 - EUC08



2A.7 NO READS RECEIVED FOR 1, 2, 3 OR 4 YEARS - PRODUCT CLASS 4





2A.8 AQ CORRECTION BY REASON CODE

Report measures the count of Shipper Portfolio of MPRNs where successful AQ Correction(s) has been submitted

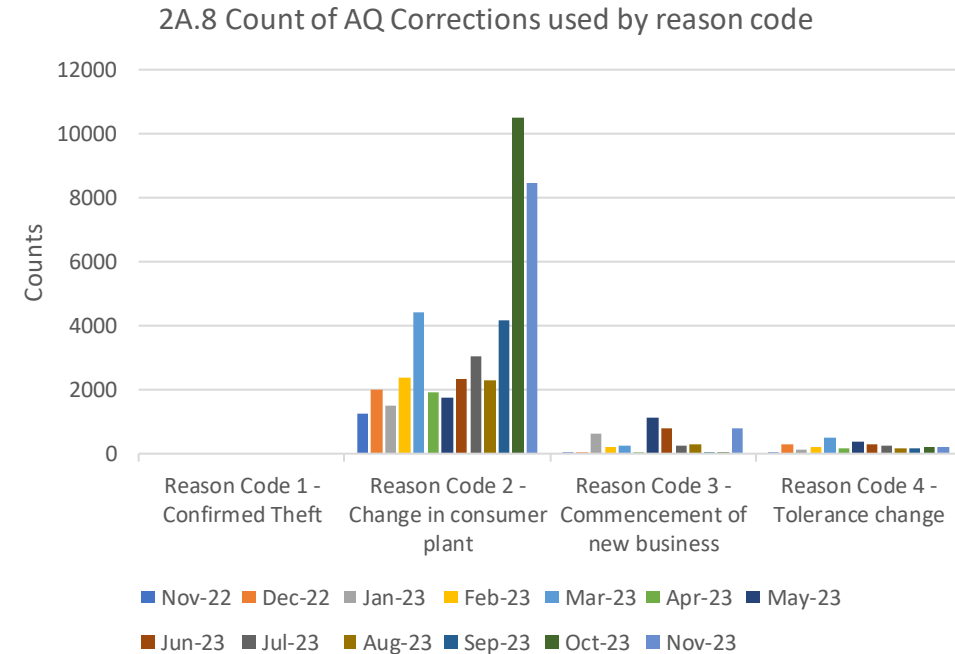
Changes in total number of AQ corrections used

Reason Code 01- Confirmed Theft
No Monthly or Annual Change

Reason Code 02- Change in Consumer Plant
↓ 2032 Monthly Change
↑ 7209 Annual Change

Reason Code 03- Commencement of New Business Activity
↑ 775 Monthly Change
↑ 788 Annual Change

Reason Code 04- Tolerance Change
↑ 8 Monthly Change
↑ 168 Annual Change



Observations:

- There have been no Theft of Gas (Reason Code '01') instances since August 2021, expectation is that a small volume of cases would have been raised within this period
- PAFA will continue to closely monitor this subject matter with due consideration to the agreed implementation of 'Modification 0816S – Updates to AQ Correction Processes' (implementation date TBC)
- The use of Reason Code '02' (Change in Consumer Plant) has started to drop again this month after a considerable increase last month. Communications have been ongoing with the Shipper party that was primarily utilising this code to establish the reasons.

2A.9 STANDARD CF AQ > 732,000 KWH



Report measures the count of sites with an AQ >732,000 kWh whereby a standard correction factor (1.02264) is associated with the relevant SP yet an individual (bespoke) correction factor is required

EUC04

↑ 36 Monthly Change
↓ 232 Annual Change

EUC07

No Monthly Change
↓ 1 Annual Change

EUC05

↑ 13 Monthly Change
↑ 19 Annual Change

EUC08

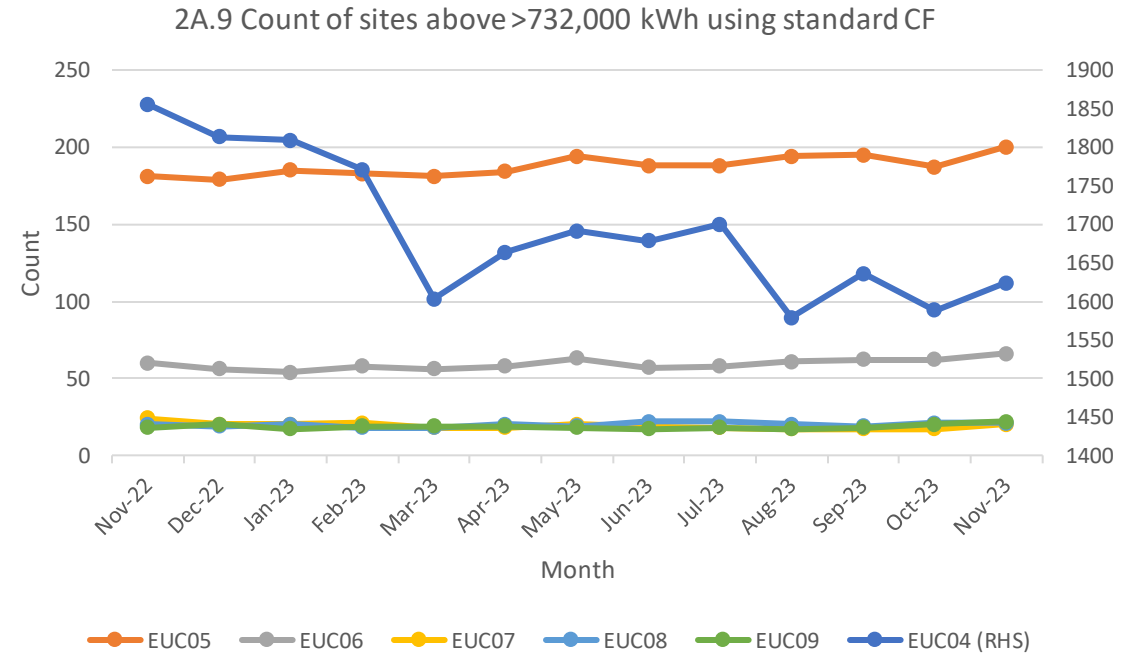
No Monthly Change
↑ 1 Annual Change

EUC06

↑ 4 Monthly Change
↑ 5 Annual Change

EUC09

↑ 2 Monthly Change
↑ 4 Annual Change



Observations:

- PAFA is continuing to liaise with the CDSP to further understand the impact of UNC681S. PAFA is seeking to identify instances whereby a Shipper has yet to submit a bespoke CF and the CDSP is unable to automatically update the CF as no history of a non-standard CF is available to utilise

2A.10 REPLACED METER READ



Report measures the count of meter reading replacements which results in reconciliation adjustments

EUC01

↑ 4399 Monthly Change
↓ 664 Annual Change

EUC02

↑ 14 Monthly Change
↓ 24 Annual Change

EUC03

↑ 12 Monthly Change
↓ 64 Annual Change

EUC04

No Monthly Change
↓ 20 Annual Change

EUC05

↓ 2 Monthly Change
↓ 2 Annual Change

EUC06

↓ ↑ Monthly Change
↓ 3 Annual Change

EUC07

↑ 1 Monthly Change
↓ 5 Annual Change

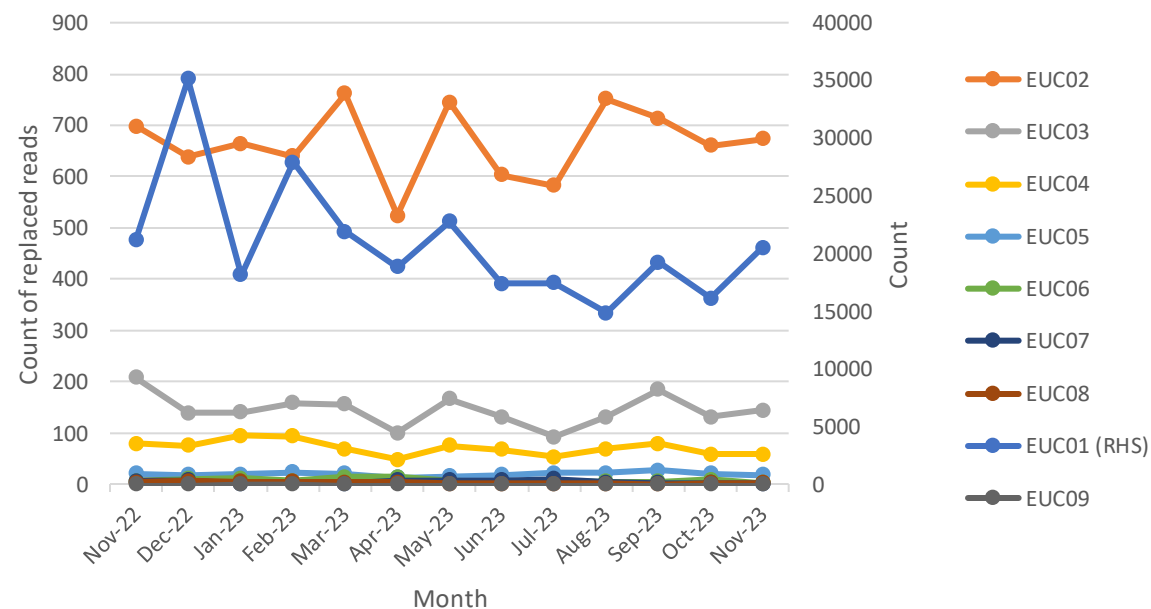
EUC08

↑ 2 Monthly Change
↓ 2 Annual Change

EUC09

No Monthly Change
No Annual Change

2A.10 Count of meter reading replaced by EUC



Observations:

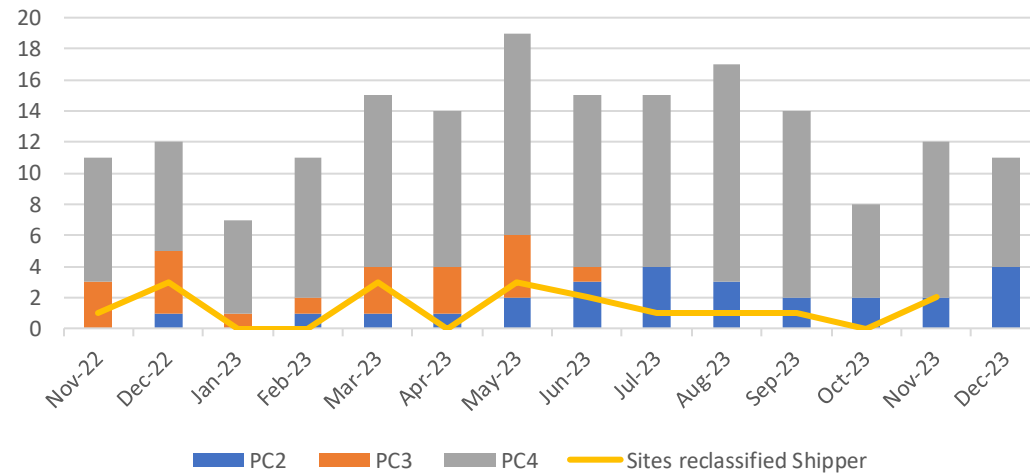
- Read replacement activity within EUC01 is driven by the volume of SPs within this particular End User Category and volumes continue to fluctuate month by month
- Read replacement volumes for SPs within EUC01 has averaged 18k in the last 6 months of across the reporting period (November 2022 – November 2023)
- PAFA will continue to monitor this subject matter



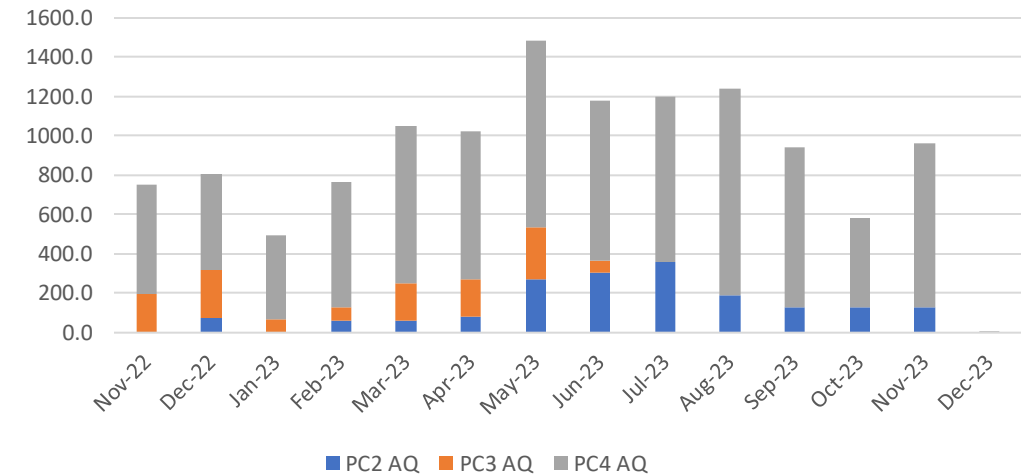
2A.11 SITES ABOVE CLASS 1 THRESHOLD NOT IN CLASS 1

Report measures the number of sites meeting, approaching or have reached the criteria for re-confirmation as Class 1 as set out in UNC G2.3.15b

Supply points above the Class 1 threshold



Total AQ (GWh) of supply points above Class 1 threshold



Observations:

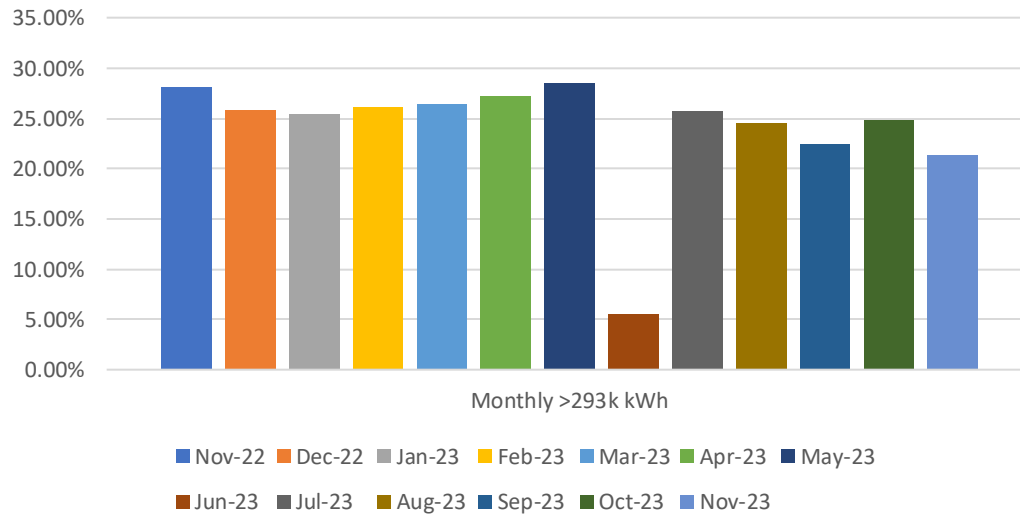
- There are currently 7 SPs within the PC4 sector of which meet PC1 threshold requirements (RAQ = 58.6m kWh)
- There are currently no SPs within the PC3 sector of which meet PC1 threshold requirements (RAQ = 58.6m kWh)
- There are currently 4 SPs within the PC2 sector of which meets PC1 threshold requirements (RAQ = 58.6m kWh)
- 2 SPs were reclassified by a Shipper party in the month of November 2023



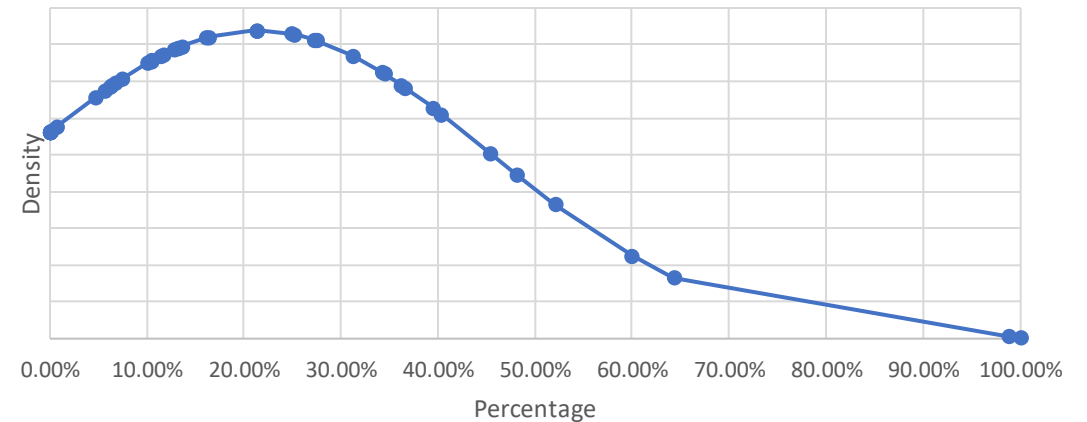
2A.12A AQ READ PERFORMANCE – PC4 MONTHLY

Report measures the percentage of PC4 monthly read performance at AQ level for sites with an AQ>=293,000 kWh

2A.12 AQ at Risk - Monthly >293k kWh industry average



2A.12a Distribution of AQ read performance for PC4 Monthly >293k kWh - 12 month average



Observations:

- PAFA will continue to review and monitor this subject matter however it is clear that required UNC industry performance levels are not being achieved on a consistent basis
- June 2023 AQ Read Performance reporting statistics for PC4 Monthly 'No Smart' SPs were subject to a CDSP system issue of which affected % values

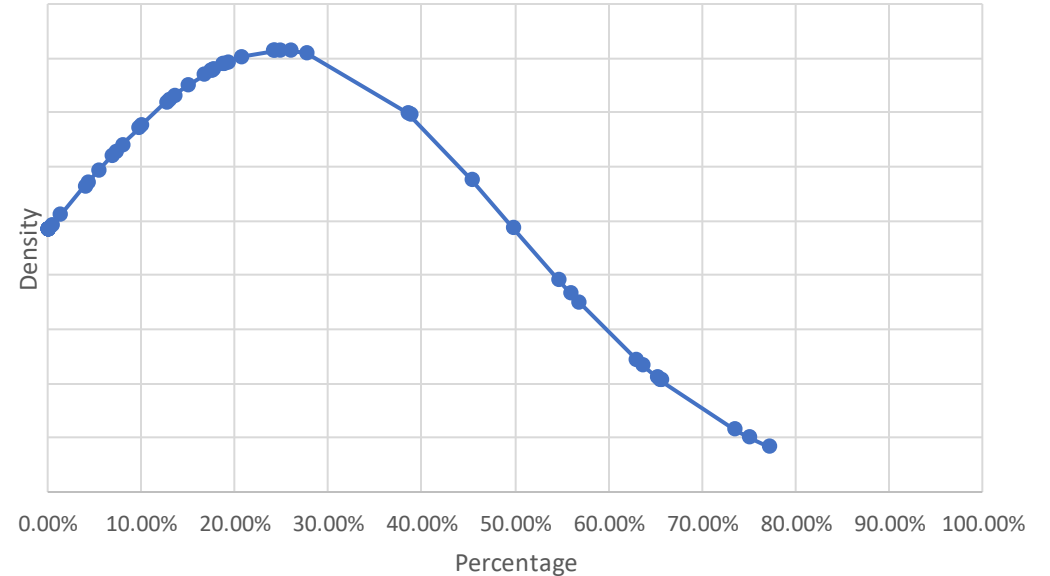
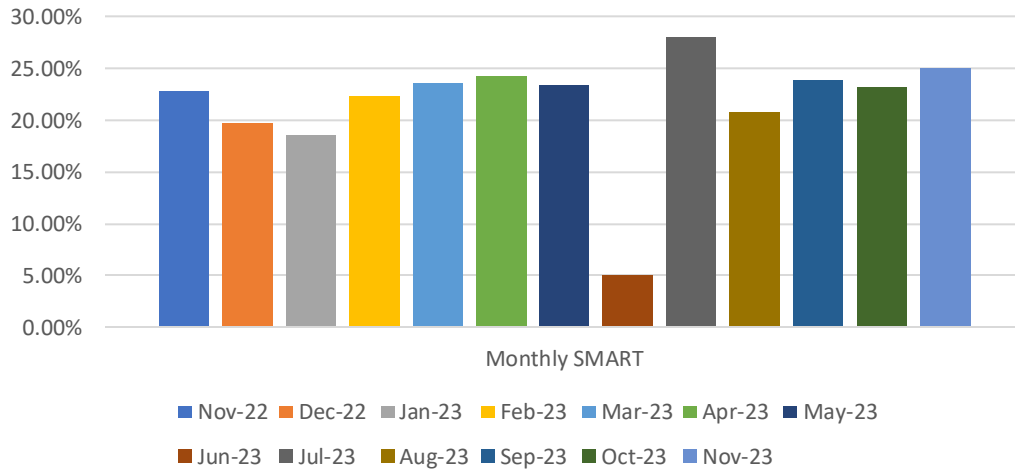


2A.12B AQ READ PERFORMANCE – PC4 MONTHLY ‘SMART/AMR’

Report measures the percentage of PC4 monthly read performance at AQ level for sites with a SMART/AMR meter with an AQ $\geq 293,000$ kWh

2A.12b Distribution of AQ read performance for PC4 Monthly sites $< 293,000$ kWh SMART/AMR - 12 month average

2A.12 AQ at Risk - Monthly SMART/AMR industry average



Observations:

- PAFA will continue to review and monitor this subject matter however it is clear that required UNC industry performance levels are not being achieved on a consistent basis
- June 2023 AQ Read Performance reporting statistics for PC4 Monthly ‘Smart’ SPs were subject to a CDSP system issue of which affected % values
- PAFA is continuing to investigate potential root causes that are impacting smart meter reading performance levels. Work is ongoing in respect of this task and updates will be provided to PAC going forward

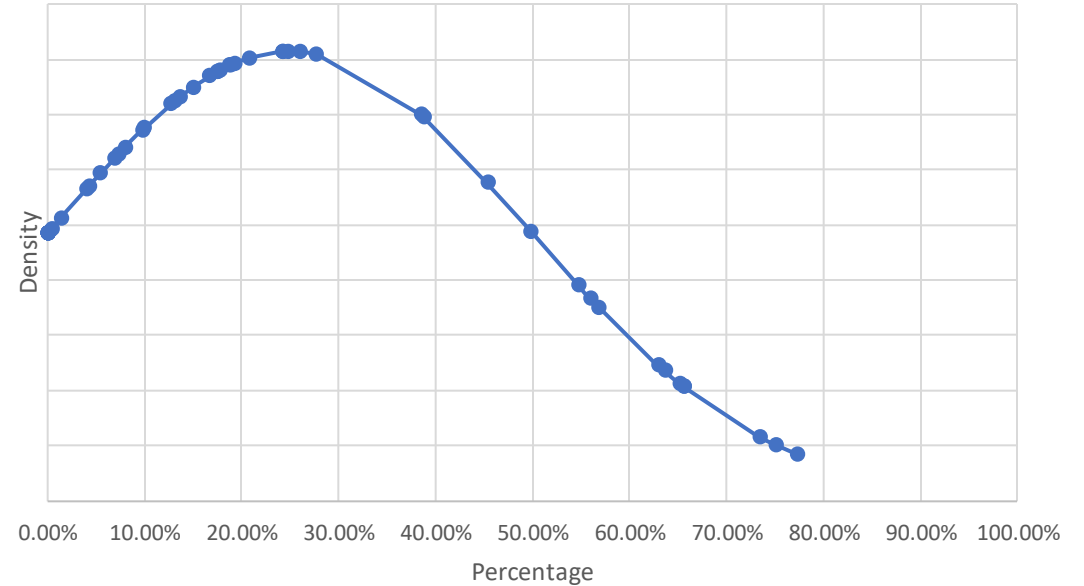
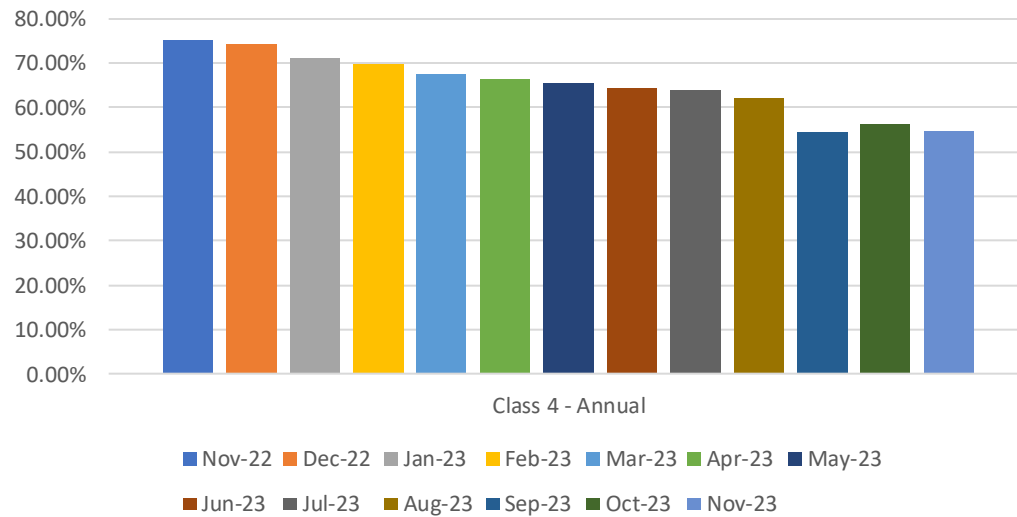


2A.12C AQ READ PERFORMANCE – PC4 ANNUAL

Report measures the percentage of PC4 annual read performance at AQ level for sites <293,000 kWh with no SMART/AMR

2A.12b Distribution of AQ read performance for PC4 Monthly sites <293,000kWh SMART/AMR - 12 month average

2A.12 AQ at Risk - Annual read industry average



Observations:

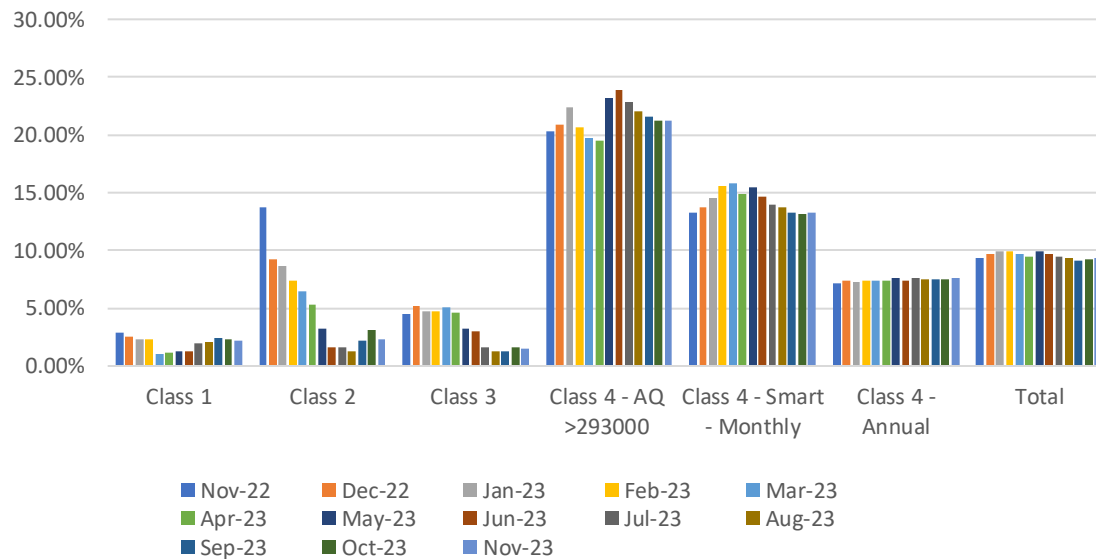
- PAFA will continue to review and monitor this subject matter however it is clear that required UNC industry performance levels are not being achieved on a consistent basis
- There has been a gradual decline of performance since December 2022 (74%) with performance declining month by month (November 2023 = 54.60%)

2A.13 AQ AT RISK



Report measures the percentage of Annual Quantity within each product class without a meter reading within timescales as set out in the UNC

2A.13 AQ at Risk - Product Class split



Observations:

- PAFA will review existing & future RFI response data received from Shipper parties to further understand factors affecting AQ at risk volumes
- PAFA will continue to monitor existing Performance Improvement Plans (PIPs) to determine the impact upon AQ at risk volumes

Shippers with the highest percentage of AQ at Risk within their portfolio in November 2023:

Product Class 1

Gitega **2.17%**
 Rome **3.44%**
 Thimphu **8.40%**

Product Class 4 – AQ >293000 kWh

Warsaw **84.84%**
 Gibraltar **100%**
 Kampala **100%**
 Maputo **100%**

Product Class 2

Rome **9.37%**

Product Class 4 – Monthly SMART

8 Shippers **100%**

Product Class 3

Manama **3.39%**
 Seoul **5.86%**
 Islamabad **100.00%**

Product Class 4 - Annual

6 Shippers **100%**

APPENDIX – PARR REPORT DETAILS



Report ID	Topic	Details	Split By	12 Rolling Months	Report Format	Report Period	Condition
2A.1	Estimated & Check Reads	Estimated Reads: The percentage of Shippers portfolio where actual reads were not provided. Excludes NTS and Telemetered sites. Check Reads: The number of MPRNS which have not had a site visit read for <=13 months.	Class	Annual	Percentage	September	M-1
2A.2	No Meter Recorded on the Supply Point Register	The percentage of a Shipper's portfolio where no meter is fitted at the supply point for more than 6 months.	Class	Annual	Percentage	September	M-1
2A.3	No Meter Recorded on the Supply Point Register and Data Flows Received	The percentage of a Shipper's portfolio where no meter is fitted at the supply point for more than 6 months but data flows are received.	Class	Annual	Percentage	September	M-1
2A.4	Shipper Transfer Read Performance	Shipper provided an opening meter read within D+10 of transfer of ownership.	Total	Annual	Percentage	September	M-1
2A.5	Read Performance	Shipper to provide read as per frequency for each Product Class. Class and Shipper transfer are excluded. 6 monthly are considered as annual sites.	Class	Monthly	Percentage	September/ August (PC4 only)	M-1/M-2 (PC4)
2A.6	Meter Read Validity Monitoring	Percentage of Shippers portfolio which failed meter read validation. MRE01026: Reading Breached lower outer tolerance MRE01027: Reading Breached upper outer tolerance MRE01028: Reading Breached lower inner tolerance and no override flag provided MRE01029: Reading Breached upper outer tolerance and no override flag provided MRE01030: Override tolerance passed and no override flag provided.	Class	Monthly	Percentage	September	M-1

APPENDIX – PARR REPORT DETAILS



Report ID	Topic	Details	Split By	12 Rolling Months	Report Format	Report Period	Condition
2A.7	No read for 1,2,3 or 4 years	Percentage of Shipper portfolio in the specified EUC band which has not received a read for the specified period. Estimates are not counted.	EUC Band and Class	Annual	Percentage	September	M-1
2A.8	AQ Corrections by reason code	Count of MPRNs on each Shippers portfolio where the AQ correction process was used.	Reason code	Annual	Count	September	M-1
2A.9	Standard Correction Factors	Count of sites with an AQ>732,000 kWh which have used a standard correction factor instead of using a site specific correction factor as per the requirements.	EUC Band	Annual	Count	September	M-1
2A.10	Replaced Meter Reads	Count of sites which have replaced a meter read (actual meter reading with another actual meter read), with an updated AQ for the MPRN.	EUC Band	Annual	Count	September	M-1
2A.11a	Sites above the Class 1 threshold which are not in Class 1	Reports on all sites with an Annual Quantity over the mandatory Daily Metered threshold which are not in Class 1 as a count and as a total AQ. Separated between those that have fully met the UNC G2.3.15b criteria, and those that have not yet met them.	Current Class	Annual	Count and sum of AQ	September	M
2A.11b	Count of sites reclassified to Class 1 by the Shipper and CDSP	Compares the number of qualifying sites which have been moved to Class 1 by the Shipper and by the CDSP each calendar month.	Shipper v CDSP	Annual	Count and sum of AQ	September	M-1

APPENDIX – PARR REPORT DETAILS



Report ID	Topic	Details	Split By	12 Rolling Months	Report Format	Report Period	Condition
2A.12	Class 4 read submission performance as a percentage of portfolio AQ	Assesses performance against the Class 4 meter read performance, expressed as a percentage of total AQ in that Shipper's ownership. Targeting larger AQ sites would aid settlement by ensuring that more energy is reconciled more quickly. Sites are excluded if there was a change of Shipper or where an "operational" Smart or Advanced meter was fitted for the first time in the calendar month. Sub-divided by Meter reading obligations, a = Monthly due to AQ, b = Smart/AMR fitted c = non-Monthly	Meter reading obligation	Annual	Percentage Read	September	M-1
2A.13	Breakdown of AQ overdue for a Meter Reading	Reports on the total AQ by Shipper which is overdue for a meter reading. "Overdue" for the purposes of this report is UNC obligation plus 2 or 3 months, i.e. - Class 1, 2, 3 - no read for three months - Class 4 monthly read sites - no read for three months - Class 4 non-monthly read sites - no read for 15 months	Meter reading obligation	Current and prior month only	Percentage overdue	September	M-1



GEMSERV

PAFA@GEMSERV.COM
