



## SwitchStream CoMC update



Wednesday 16th October 2019

# Contents

- History
- Overview of services
- What does it mean to you?
- How do you choose an option?
- High-level delivery plan
- SwitchStream testing
- Next steps
- Appendix

# History

- Xoserve considered the re-use of existing industry flows and processes as part of Central Switching Service (CSS) scoping back in September 2017.
- With the development of the CSS communication routes, the concept of adapter services has enabled Xoserve to reintroduce our initial concept of flow reuse with SwitchStream.
- Our expertise in the market, industry experience and Switching Programme knowledge forms the basis of SwitchStream.
- Our customers have shown keen interest in the use of adapter services, and Xoserve will react to our customers' demand for this product.

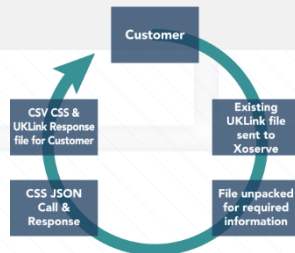
# Overview of services

## Option 1

Provides the ability to support gas & electricity messages utilising existing industry registration files

### Benefits

- ✓ We connect to CSS on your behalf
- ✓ We manage CSS mandated security on your behalf
- ✓ You can reuse existing technology and infrastructure investments
- ✓ We generate and digitally sign messages between us and CSS
- ✓ You can use existing switching processes

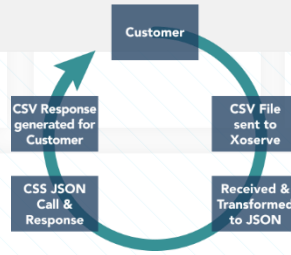


## Option 2

Provides the ability to support all gas and electricity messages through the creation of new CSS registration files

### Benefits

- ✓ We connect to CSS on your behalf
- ✓ We manage CSS mandated security on your behalf
- ✓ You can use new file formats aligned to your new switching processes
- ✓ You can reuse existing technology and infrastructure investments
- ✓ We generate and digitally sign messages between us and CSS

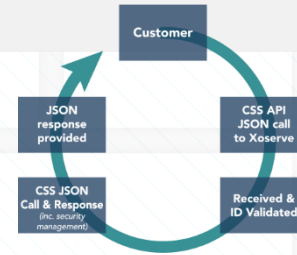


## Option 3

Provides the ability to support all gas and electricity registrations using our APIs through a single route.

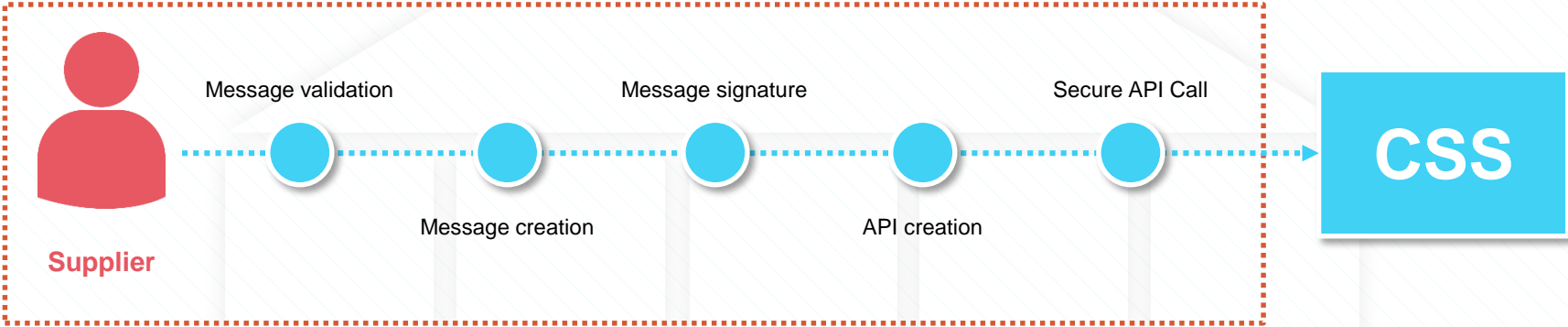
### Benefits

- ✓ We connect to CSS on your behalf
- ✓ We manage CSS mandated security on your behalf
- ✓ We simplify market interaction by ensuring consistency of API messages
- ✓ We generate and digitally sign messages between us and CSS
- ✓ Our API roadmap will enable consistent customer interactions

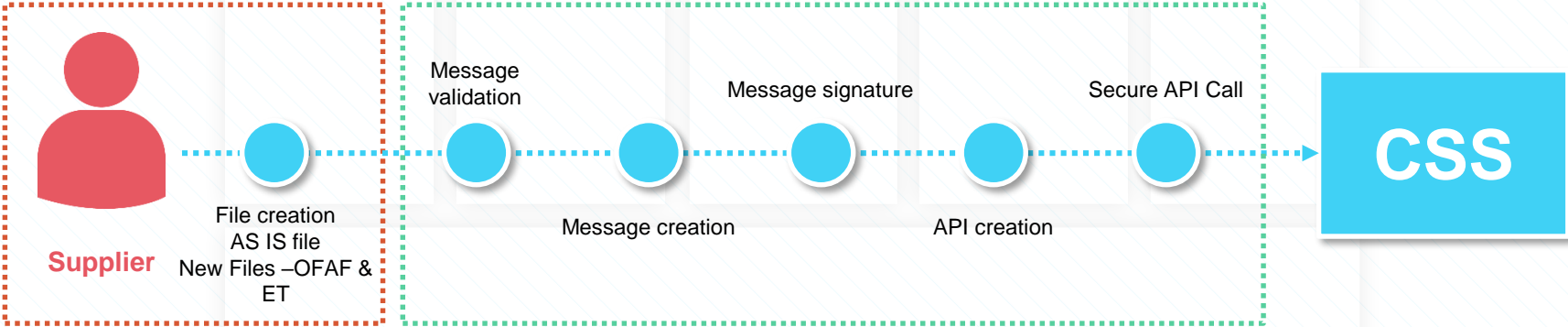


# Overview of services continued

Connecting directly with CSS – all activities in the red box will need to be carried out

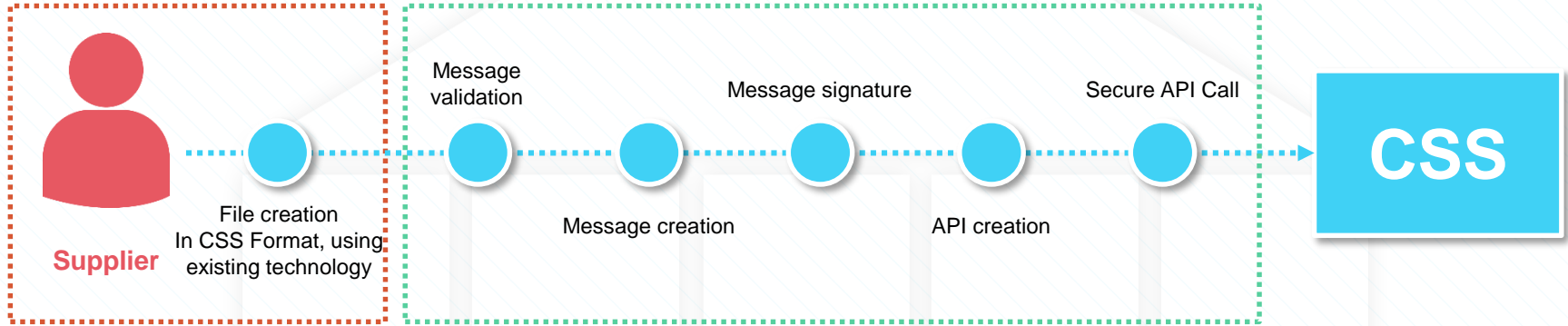


Using SwitchStream Option1 – could continue with existing processes and technology

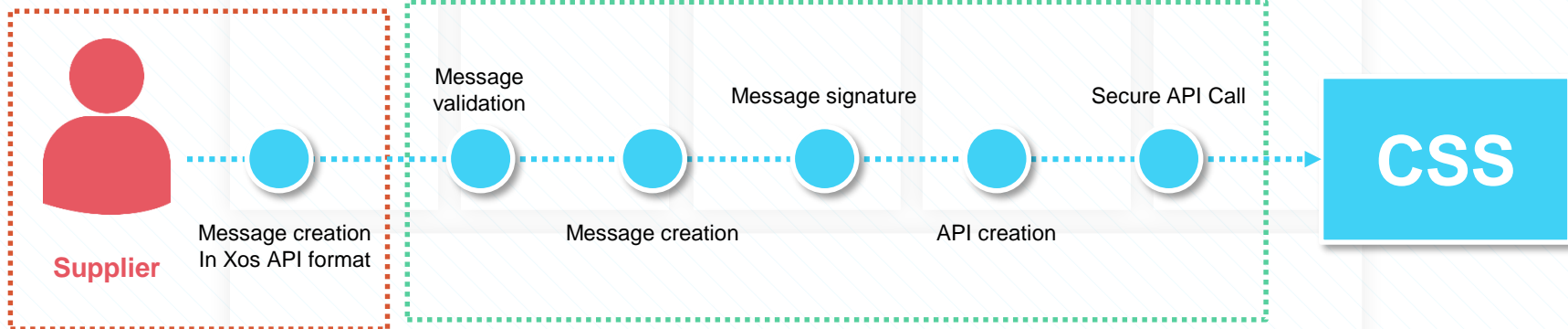


# Overview of services continued

Using **SwitchStream Option2** – could continue with technology, processes will need to be aligned to CSS processes



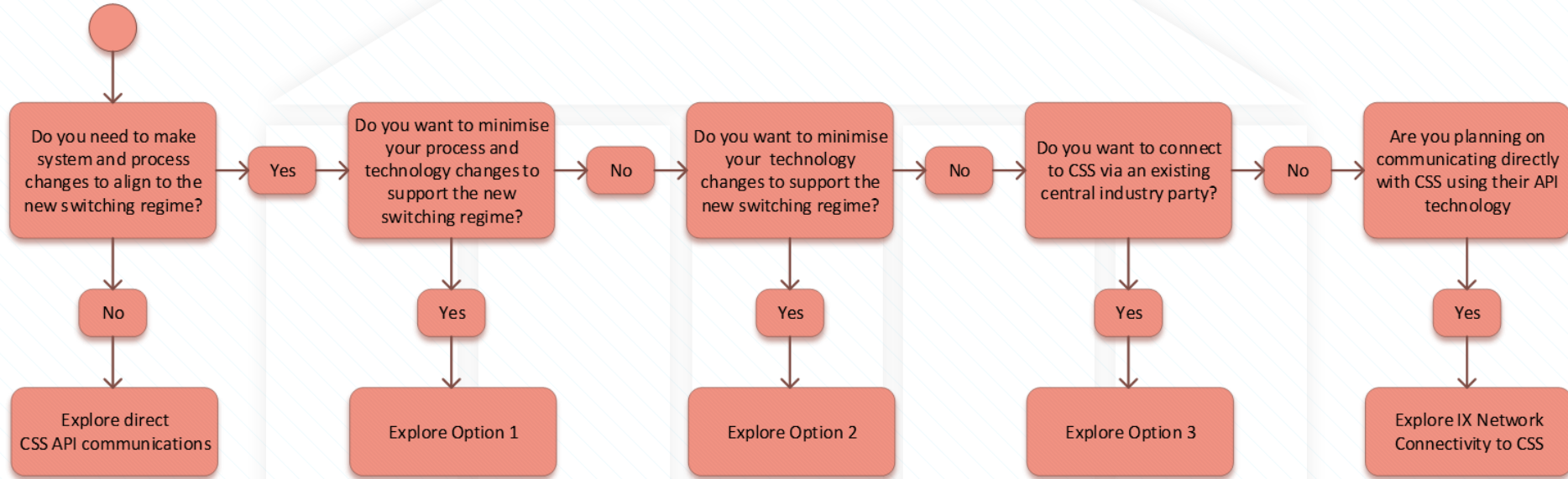
Using **SwitchStream Option 3** – can utilise Xoserve APIs for consistency across primary & secondary interfaces



# What does it mean to you?

	Option 1	Option 2	Option 3
<b>Gas</b>	<p><b>Shipper &amp; Supplier</b></p> <ul style="list-style-type: none"> <li>AS IS process remains for switching</li> <li>No need to develop consequential UK link changes</li> <li>No need to develop new CSS messages</li> <li>Need develop new switching files for OFAF and ET resolution</li> <li>Capture the registration ID, if required.</li> </ul>	<p><b>Supplier</b></p> <ul style="list-style-type: none"> <li>You'll need to create new CSS files in your preferred format which would include OFAF and ET resolution for inbound &amp; outbound messages</li> <li>Need to change your processes to align to new switching regime.</li> </ul> <p><b>Shipper</b></p> <ul style="list-style-type: none"> <li>You'll need to be able to receive CSS outbound messages in your preferred format</li> <li>Need to change your processes to align to new switching regime.</li> </ul>	<p><b>Supplier</b></p> <ul style="list-style-type: none"> <li>You'll need to create new CSS APIs including OFAF and ET resolution for inbound &amp; outbound messages</li> <li>Need to change your processes to align to new switching regime</li> </ul> <p><b>Shipper</b></p> <ul style="list-style-type: none"> <li>You'll need to be able to receive CSS outbound messages in APIs</li> <li>Need to change your processes to align to new switching regime.</li> </ul>
<b>Electricity</b>	<p><b>Suppliers</b></p> <ul style="list-style-type: none"> <li>AS IS process remains for switching</li> <li>Need to continue to receive D217 file from MPRS</li> <li>Need develop new switching files for OFAF and ET resolution</li> <li>Registration ID will be contained within the D217 file.</li> </ul>	<p><b>Suppliers</b></p> <ul style="list-style-type: none"> <li>You'll need to create new CSS files in your preferred format which would include OFAF and ET resolution for inbound &amp; outbound messages</li> <li>Need to change your processes to align to new switching regime.</li> </ul>	<p><b>Suppliers</b></p> <ul style="list-style-type: none"> <li>You'll need to create new CSS APIs including OFAF and ET resolution for inbound &amp; outbound messages</li> <li>Need to change your processes to align to new switching regime.</li> </ul>

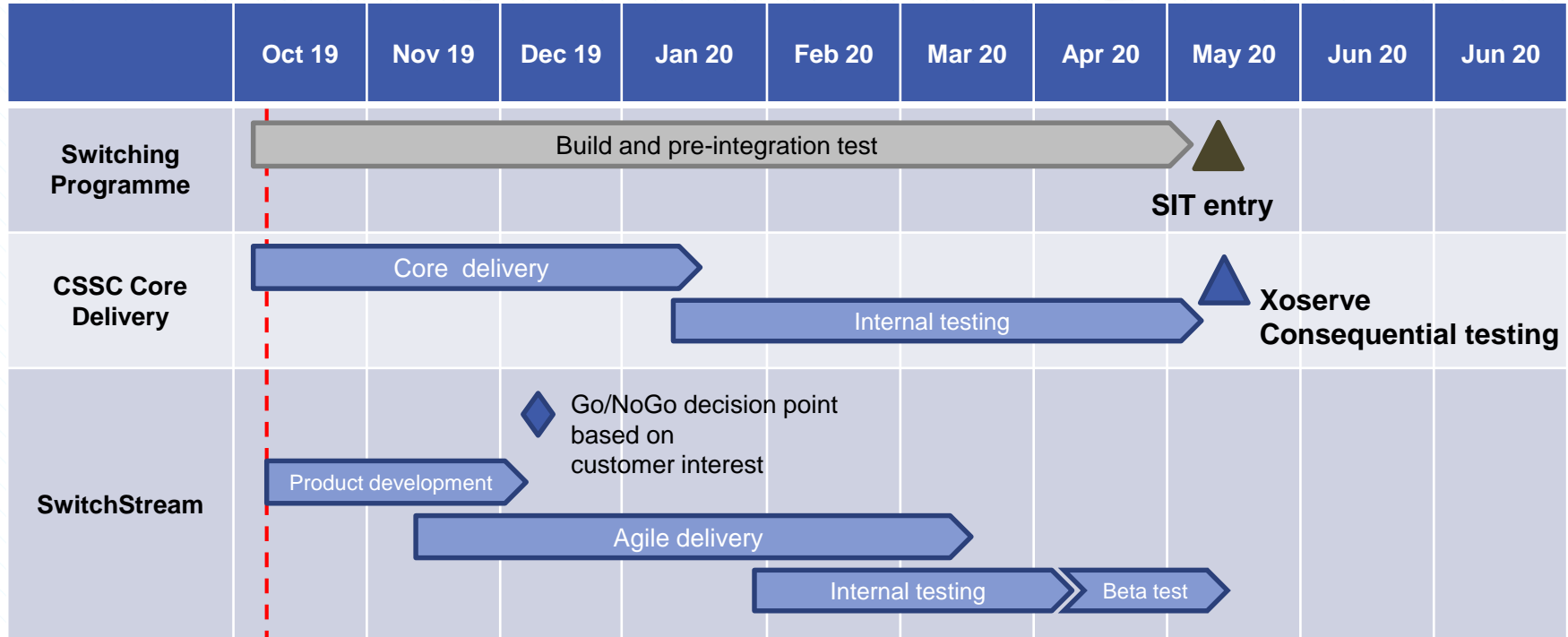
# How do you choose an option?





# High-level delivery plan

## - do you have additional milestones/deadlines?



We are here

# SwitchStream testing

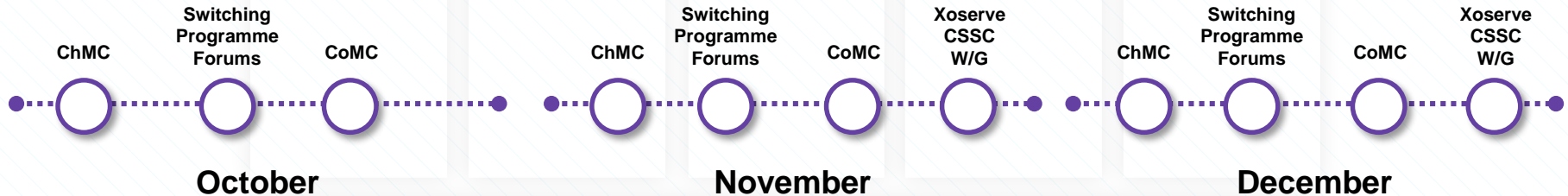
- The Switching Programme has mandated certain test activities as part of the overall programme plan. These phases allow market participants to test in conjunction with CSS and all central service providers.
- Xoserve has its own consequential test phase, which would be utilised by shippers.
- You will have SwitchStream available for both consequential testing, as well as all Switching Programme external testing phases.
- We will be looking for beta testing partners ahead of full-fledged external testing.

# Next Steps

- We will continue to engage with our customers via our existing governance forums and 1-2-1 conversations to understand appetite.
- In addition, we will continue to provide further detail and information on SwitchStream via our website, newsletters and blogs.

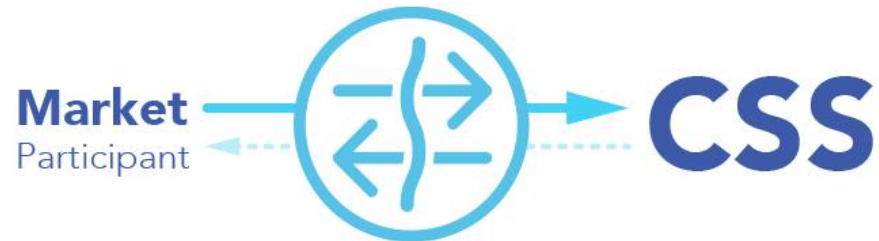
## Engagement timeline

Website updates, weekly newsletters, blogs, 1-2-1s





# APPENDIX



# Flows in scope

Flows/Messages in consideration for each of the options.

	Supplier		Shipper	
	Inbound	Outbound	Inbound	Outbound
Option 1 – Gas	0	0	3	5
Option 2 – Gas	5	8	0	7
Option 1 – Electricity	1*	1*	0	0
Option 2 – Electricity	5	8	0	0
Option 3 – Gas	5	8	0	7
Option 3 – Electricity	5	8	0	0

*\*Does not currently include objection flows*