



EUC09 Sites not in Class 1

PAC Update January 2020

Recap

- UIG Task Force identified sites with AQs over the Class 1 threshold that are still in Class 3 or 4 (Issue 3.2.1)
- Obligations set out in UNC G1.6.15
- These sites should be re-confirmed as Class 1 by the Shipper after 3 consecutive AQ calculations above the threshold in a six-month period, or after 18 months if every calculated AQ is above the threshold
- These sites could be contributing to daily UIG if their usage pattern is very different to the EUC09B NDM profile
- Raised at UNC UIG Workgroup in January – recommended engagement by Xoserve and monitoring at PAC – last update provided at December 2019 PAC

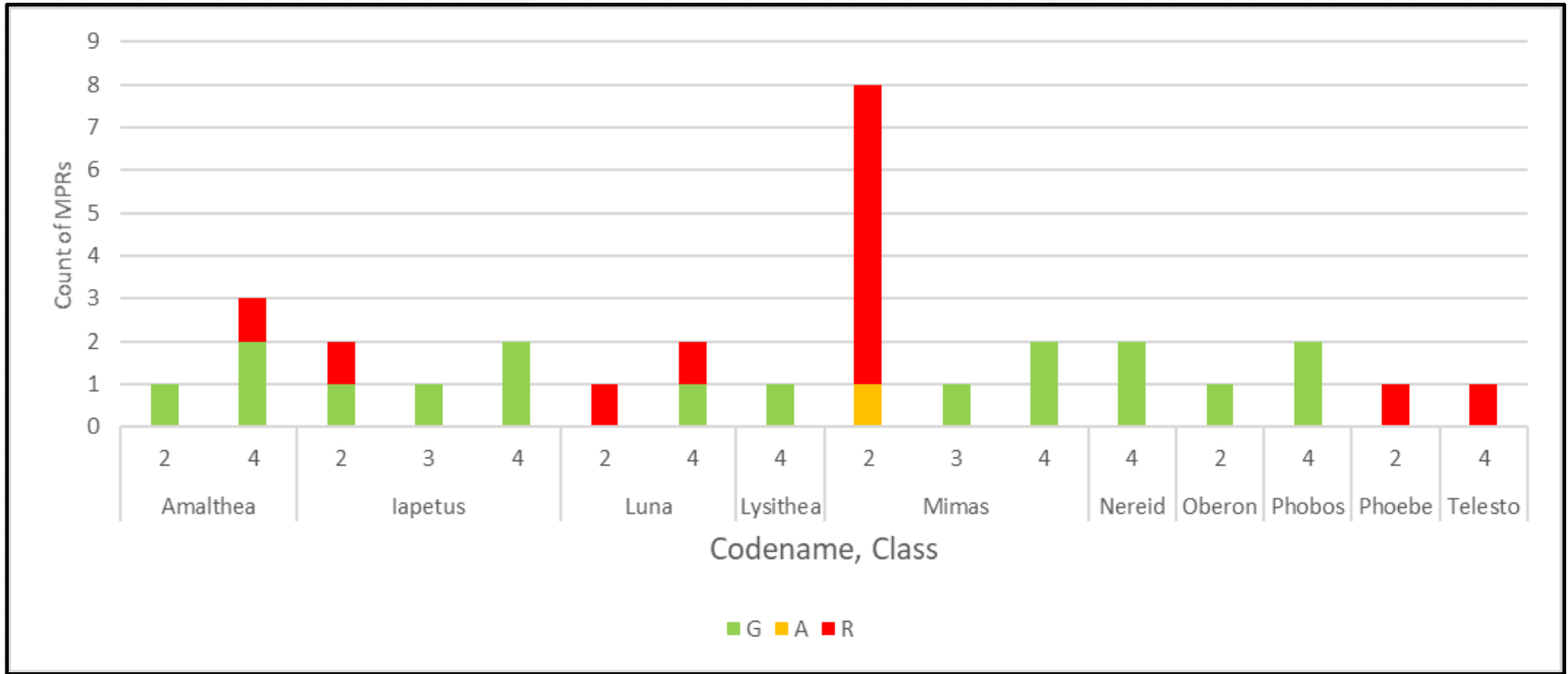
Overview of Statistics – Changes since September

- As not yet included in the PARR, these stats have used the anonymised “Moon” codes
- Stats include Class 2 and 3 sites **as at 2 January** – should be converted to Class 1 once qualifying criteria are met
- 2 Class 3 or 4 sites, total AQ 0.1 tWh (decrease of 1 sites)
- 13 Class 2 sites, total AQ 1.8 tWh (increase of 2 sites)
- Plus 2 sites which are over threshold and close to qualifying criteria (total 0.1 tWh), 7 sites over threshold, not close to qualifying (total 0.4 tWh)

Summary of Count and Rolling AQ

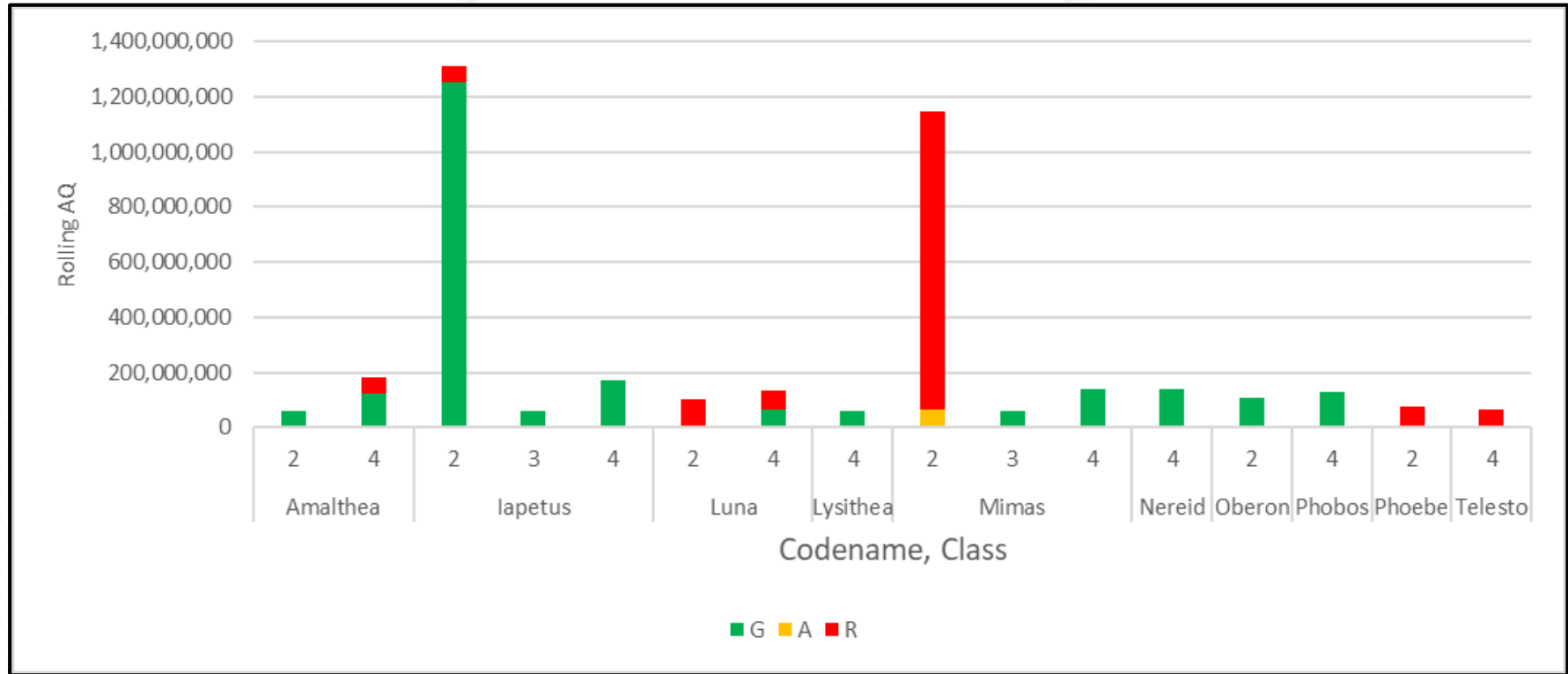
	1 November (last update)		1 January	
	Count	Total AQ	Count	Total AQ
Class 2 - RED	13	1.8 tWh	10	1.3 tWh
Class 3 & 4 - RED	2	0.1 tWh	3	0.2 tWh
Total - RED	15	1.9 tWh	13	1.5 tWh
Amber sites	2	0.12 tWh	1	0.06 tWh

EUC09 Sites as at 1 Jan 2020 – COUNT, by Class



R = G1.6.15 criteria met, A = Close to qualifying period met, G = newly increased to EUC09

EUC09 Sites as at 1 Jan 2020 – AQ, by Class



R = G1.6.15 criteria met, A = Close to qualifying period met, G = newly increased to EUC09

Observations

- Now six Shippers with Red sites this month (up from four)
- 13 of the Red sites had a meter reading loaded in December – good news for reconciliation and AQ accuracy
- Of the 14 sites this month, 9 were present in the last update, 5 are new

The logo for xserve is centered within a stylized window frame. The window frame is composed of light gray lines forming a rectangle with a triangular roof. The background of the window is filled with a fine, light blue diagonal hatching pattern. The logo itself consists of the word "xserve" in a blue, sans-serif font. The letter "x" is a dark blue, while the "s", "e", "r", "v", and "e" are a lighter blue. The "x" is stylized with a central gap that forms a diamond shape.

xserve