



**PAFA Access to CDSP Data – Update on
Scope and Timescales**

PAC Meeting September 2020

Background

- Previous concerns raised by PAFA that they do not have enough data to meet PAC's expectations on them e.g.
 - Meter point level data on “failed” MPRs
 - Access to CDSP Solar Moons codes to understand linkages between PARR and other performance areas
 - Access to AQ data to understand context/AQ at risk of key performance areas

Overview – Scope of PAFA Access to Data

“Breadth” of access –
which Meter Points?

Any “non-compliant” Meter Points as per
PARR Reports

*e.g. no read since X date, Incorrect
conversion factor, overdue for check read*

“Depth” of access –
what data for those
Meter Points?

Data Disclosure Request approved at May ‘20
DSC Contract Management C’ttee

*Includes MPR, Shipper, Market Sector, Class, AQ, Meter
reads – full list within the DDR document:*

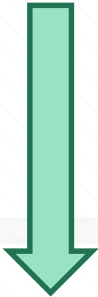
<https://www.gasgovernance.co.uk/sites/default/files/ggf/2020-05/3.3%20Disclosure%20Request%20Report%20-%20PAFA%20Asset%20Insights%20Updated%20V1%20%28002%29.pdf>

Third Dimension - Timescales

“Breadth” of access –
which Meter Points?

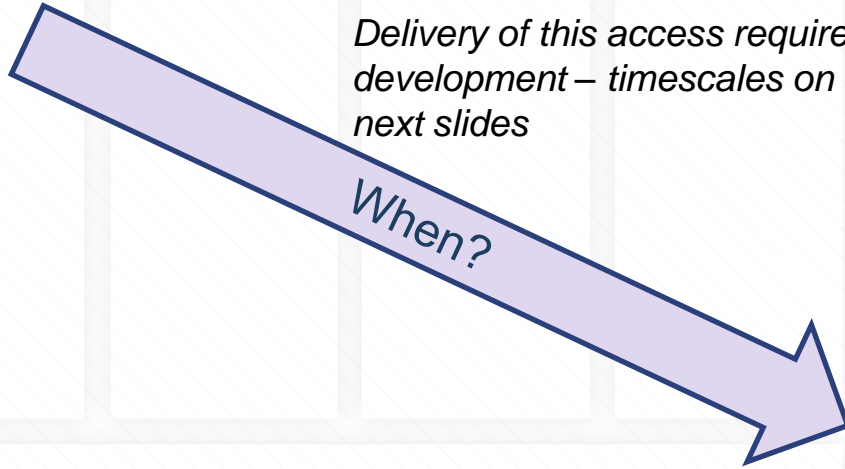


“Depth” of access –
what data for those
Meter Points?



*Delivery of this access requires
development – timescales on
next slides*

When?



Reports now included in PAFA view on DDP

1. Estimated & Check Reads used for Gas Allocation, and consumption adjustments for Products 1 & 2 ✓
 2. No Meter Recorded in the Supply Point Register ✓
 3. No Meter Recorded in the Supply Point Register and data flows received by Xoserve ✓
 4. Shipper Transfer Read Performance ✓
 5. Read Performance ✓ (Includes MRF for Class 4)
 7. No Reads received for 1, 2, 3 or 4 years ✓
 8. AQ Corrections ✓ (Delivered 01/09/20)
 9. Standard Correction Factors for sites with AQ > 732, MWH ✓
 10. Replaced Meter Reads ✓
- Xx – Report Class 4 Performance (Mod 0672) – Delivered 01/09/20

** Drill down and export facility included for each of these for “negative performance”

Reports not yet available to PAFA

6. Meter Read Validity Monitoring (read rejections for logic checks) – *awaiting industry prioritisation*
11. Annual Quantity Reports – *AQ data now available, report views awaiting industry prioritisation*
12. NDM Sample Data Submission – *data not currently available in DDP – held in stand-alone system*
13. WAR Band Read Submission and Calculation – *Nov and April reports available to Shippers, need to add PAFA view to a DDP sprint*

User Stories – Summary

- PAC’s DDP “User Stories” (i.e. new dashboard/report requirements)
- Total = 24
 - Straightforward/data already available = 8 – could be delivered in forthcoming sprints (see last 2 slides)
 - Complex/require further clarification/investigation = 16
 - are not currently on the Shippers’ priority lists – need to wait until we have extra “sprint” capability – early 2021 to begin work

Access to “Solar Moons”/AQ Data

- PAFA now has a copy of the “Solar Moon” codes used by Xoserve for non-PARR reports (and associated Shipper Shortcodes)
- AQ Data was included in the most recent DDP Sprint Drop – now awaiting PAFA testing phase

Appendix – Less Complex User Stories – 1 of 2

Story Ref	Related PARR mapping	Story
DDP-380	Estimated Reads 2B.1	I want a report that shows a trend line between allocated and settled volumes that includes the total amount of industry being settled on estimates for PC1 and PC2 so that I can monitor performance
DDP-381	Estimated Reads 2B.1	I want to see what percentage of AQ is being settled with estimates across each shippers PC1 and PC2 portfolios each month so that I can understand potential AQ at risk
DDP-383	No Meter Recorded Asset 2B.2	<p>I want the ability to view the data in No Meter Recorded dashboard by Product Class so that I am provided with greater context related to the data already contained.</p> <p>I want the report to include the AQ roll for each MPRN by product class</p> <p>I want the report to show the total AQ at a summary level</p>
DDP-388	Transfer Reads 2B.4	I want to see how many transfer reads are being submitted, accepted / rejected each month and as a rolling 12 month view so that I can assess shipper's intent – Shippers have it but class 3 we would like to aggregate due to the volumes and the anticipated performance gains

Appendix – Less Complex User Stories – 2 of 2

Story Ref	Related PARR mapping	Story
DDP-390	Read Performance 2B.5	I want a report that shows read performance split at class, MRF (meter read freq), Associated AQ (% of AQ that has been read) and number of MPRNs so that I better understand the materiality associated with performance
DDP-391	Read Performance 2B.5	I want a report that shows meter type, number of reads submitted, number of reads accepted & number of reads rejected for all classes per month
DDP-394	No Reads 2B.7	I want to see the associated AQ of sites in the no reads category and be able to filter on MRF (Meter Read Frequency). Filter by product class
DDP-397	AQ Corrections 2B.8	I want to see the amount (volume) AQs are changing as a result of AQ Corrections so that I can assess whether the process is being used correctly Direction of AQ movement and the volumes involved.

The logo for xserve, featuring a stylized 'x' composed of two overlapping blue shapes, followed by the word 'serve' in a lowercase, sans-serif font. The entire logo is centered within a light gray window frame that is set against a background of a light blue and white diagonal grid pattern.

xserve