



EUC09 Sites not in Class 1

PAC Update July 2020

Recap

- UIG Task Force identified sites with AQs over the Class 1 threshold that are still in Class 3 or 4 (Issue 3.2.1)
- Obligations in UNC G1.6.15 – updated by UNC Mod 0690 – **RAG status reflects the new rules**
- These sites should now be re-confirmed as Class 1 by the Shipper after **3 consecutive AQ calculations above the threshold, or after 12 months if every calculated AQ is above the threshold**
- These sites could be contributing to daily UIG if their usage pattern is very different to the EUC09B NDM profile
- Raised at UNC UIG Workgroup in January 2019 – recommended engagement by Xoserve and monitoring at PAC – last update provided at March 2020 PAC

Overview of Statistics – Changes since June

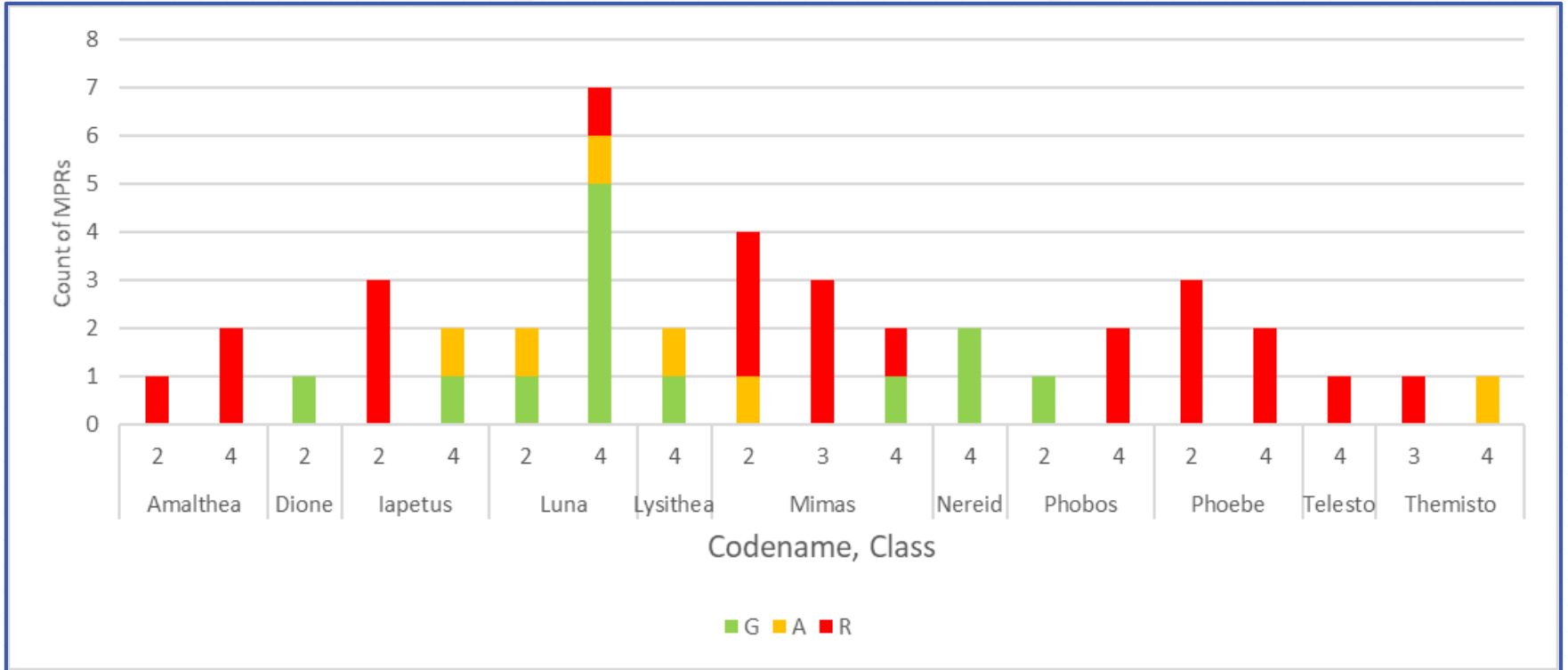
- As PARR Reports have not yet been developed, these stats have used the anonymised “Moon” codes
- Stats include Class 2, 3 and 4 sites **as at 1 July** – should be converted to Class 1 once qualifying criteria are met
- 13 Class 3 and 4 sites, total AQ 0.9 tWh (**increase of 2 sites**)
- 10 Class 2 sites, total AQ 1.2 tWh (decrease of 1 site)
- Plus 4 sites which are over threshold and close to qualifying criteria (total 0.3 tWh), 10 sites over threshold, not close to qualifying (total 0.7 tWh)

Summary of Count and Rolling AQ

	1 June		1 July	
	Count	Total AQ	Count	Total AQ
Class 2 - RED	11	1.3 tWh	10	1.2 tWh
Class 3 & 4 - RED	11	0.8 tWh	13	0.9 tWh
Total - RED	22	2.1 tWh	23	2.1 tWh
Amber sites	3	0.2 tWh	4	0.3 tWh

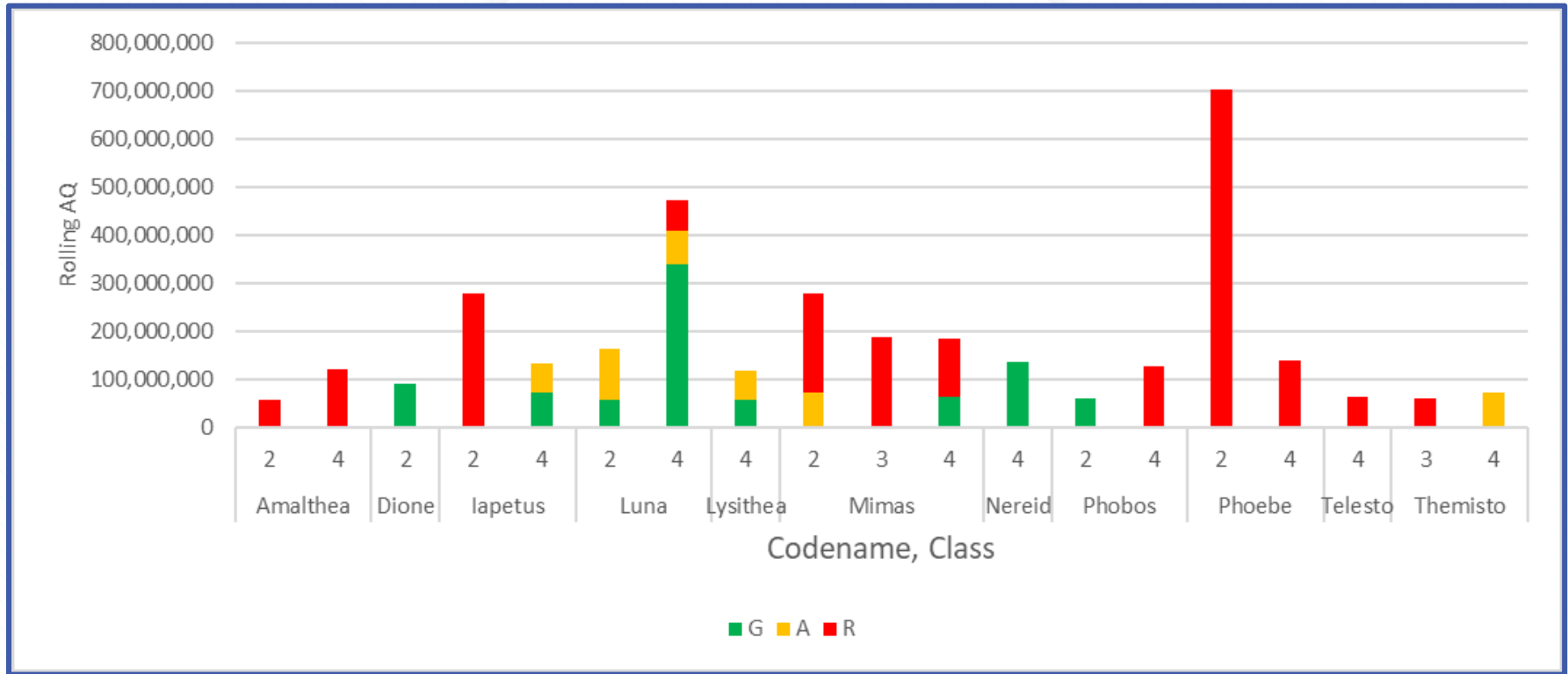
R = G1.6.15 criteria met, A = Close to qualifying period met, G = newly increased to EUC09
Stats reflect the revised UNC rules

EUC09 Sites as at 1 July 2020 – COUNT, by Class



R = G1.6.15 criteria met, A = Close to qualifying period met, G = newly increased to EUC09

EUC09 Sites as at 1 July 2020 – AQ, by Class



R = G1.6.15 criteria met, A = Close to qualifying period met, G = newly increased to EUC09

Observations

- Now eight Shippers with Red sites this month (same eight as in June)
- 13 of the Red sites had a meter reading loaded in May – good news for reconciliation and AQ accuracy – but 7 had not had an AQ calc in the last three months
- Of the 23 Red sites this month, 14 were present in the last update, 9 are new

The logo for Xserve, featuring a stylized 'X' composed of two overlapping blue shapes, followed by the word 'serve' in a lowercase, blue, sans-serif font. The logo is centered within a white rectangular frame that has a thin grey border and is set against a background of fine, light blue diagonal lines.

xserve