

# PARR Dashboards

---

11 February 2020

PAFA

  
Gemserv

# 2A.1 Estimated & Check Reads - Product Classes 1 & 2

Report measures the percentage of each shippers portfolio where estimated reads were provided. Count of each shippers portfolio where check reads were not provided

## PC1

### Industry movement:

- ↓ 6.38% - Monthly change
- ↑ 0.96% - Annual change

### Monthly changes:

- ↑ 0.48% Gitega
- ↑ 8.39% Warsaw
- ↑ 12.90% Ankara
- ↓ 1.15% Gitega
- ↓ 3.23% Ankara
- ↓ 16.67% Warsaw

## PC2

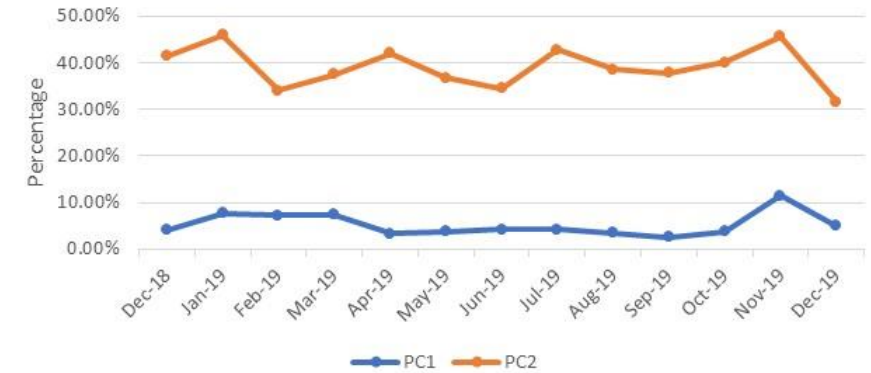
### Industry movement:

- ↓ 14.00% Monthly change
- ↓ 9.78% Annual change

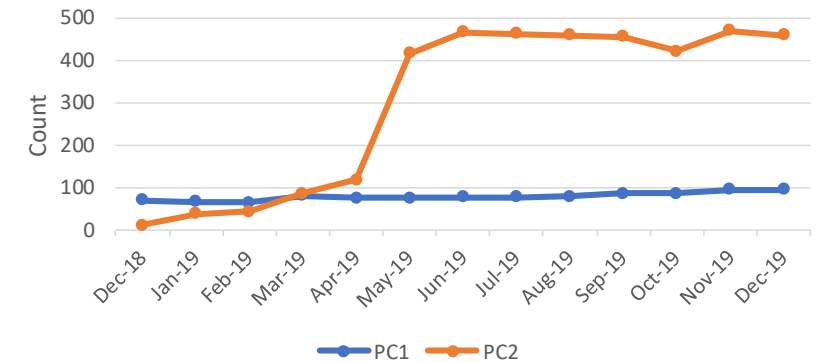
### Monthly changes:

- ↑ 4.87% Saipan
- ↑ 8.26% Thimphu
- ↑ 24.90% Reykjavik
- ↓ 31.55% Luanda
- ↓ 100.00% Ramallah
- ↓ 100.00% Roseau

2A.1 Percentage of Estimated Reads for PC1 & PC2



2A.1 Count of Check Reads not completed for PC1 and PC2



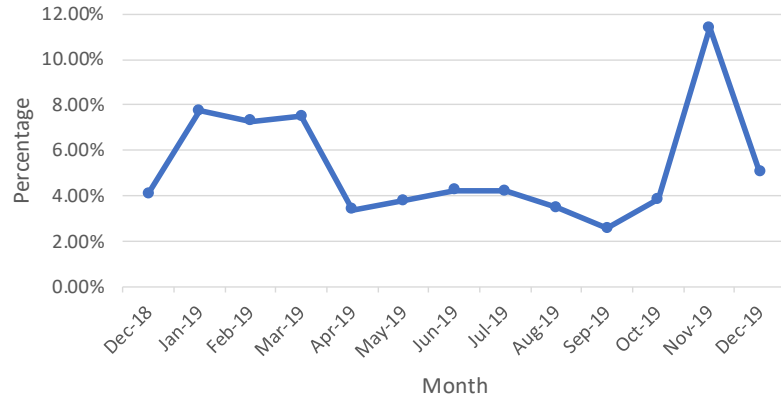
## Observations:

- PC2 Read performance has seen the most improvement, with read performance improving by c. 10% y/y
- The number of check reads for PC2 has significantly increased since May 2019 – working with CAMs to resolve issues with Shippers

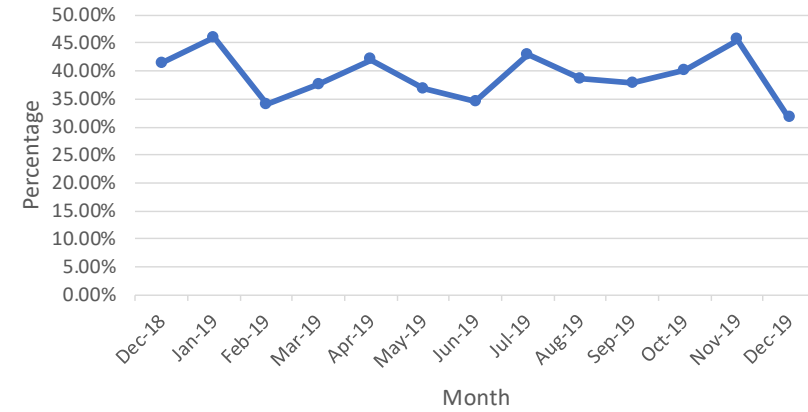
# 2A.1 Estimated & Check Reads - Product Classes 1 & 2



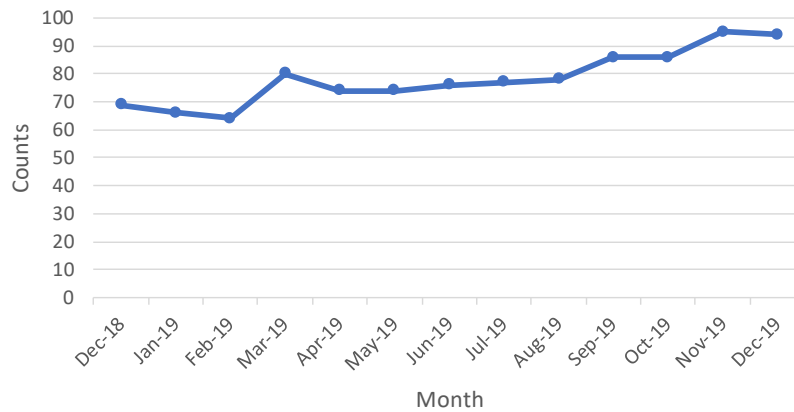
2A.1 PC1 Estimated Read Totals



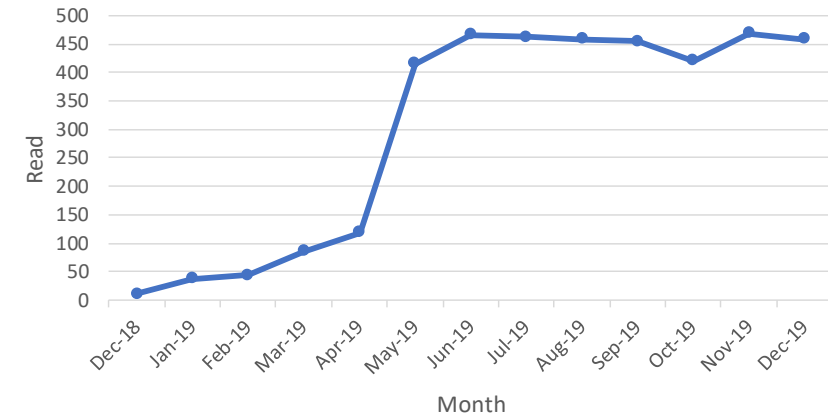
2A.1 PC2 Estimated Read Totals



2A.1 PC1 Check Reads Total



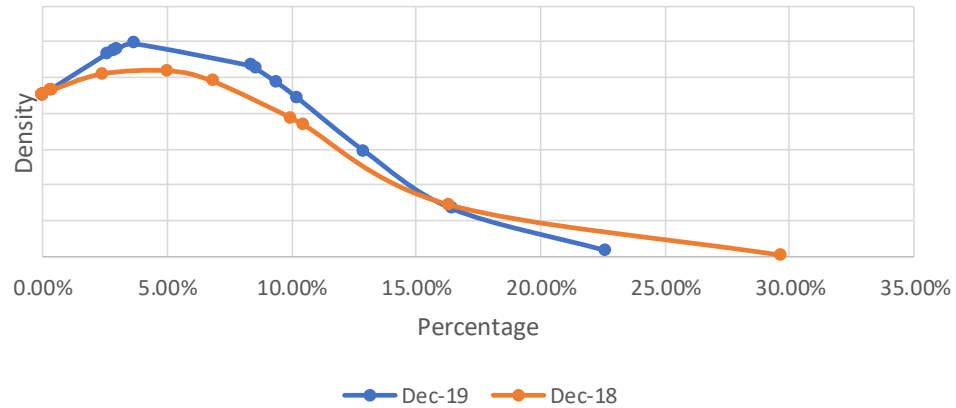
2A.1 PC2 Check Read Totals



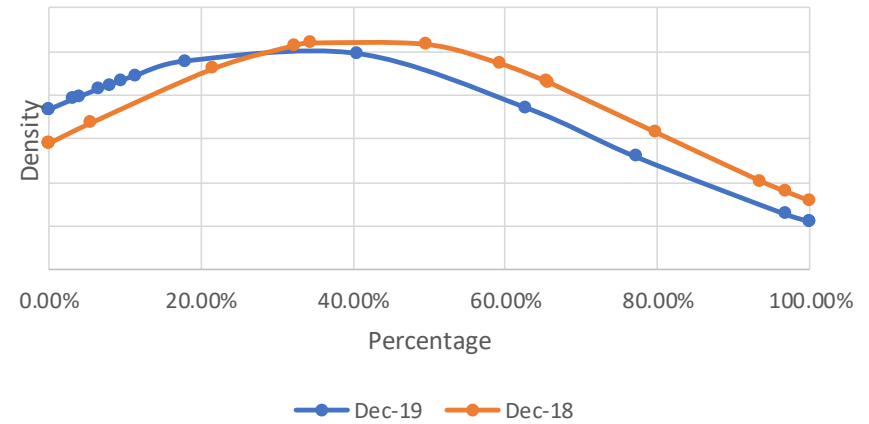
# 2A.1 Estimated & Check Reads - Product Classes 1 & 2



2A.1- 12 Month comparison (Average of PC1 Estimated Reads)



2A.1- 12 month comparison (Average of PC2 Estimated Reads)



# 2A.2 – No Meter Recorded



Report measures the percentage of each shippers portfolio where no meter recorded in the supply point register

## PC1

Highest shippers:  
Valletta 33.33%

## PC2

0% for product class

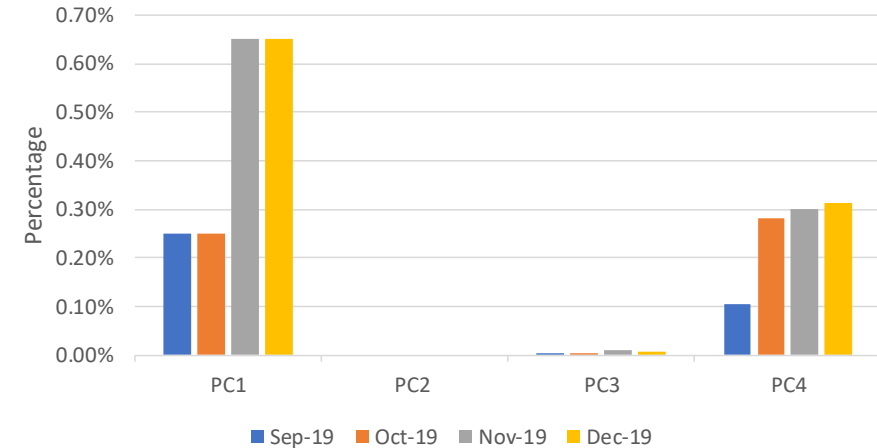
## PC3

Highest shippers:  
Papeete 0.02%  
Roseau 0.15%  
Praia 0.44%

## PC4

Highest shippers:  
Pyongyang 2.67%  
Marigot 8.33%  
Monaco 100%

2A.2 Percentage of No Meter recorded by Product Class



### Observations:

- The number of no meters recorded on the supply point register has increased significantly within PC4 since September 2019.
- The increase in PC1 is primarily due to changes in the total number of supply points in the product class and not driven by the change in total number of no meters recorded

# 2A.3 No Meter Recorded and data flows received



Report measures the percentage of each shippers portfolio where no meter recorded in the supply point register and data flows received

**PC1 & PC2**  
0.0% for both product classes

## PC3

Highest shippers:

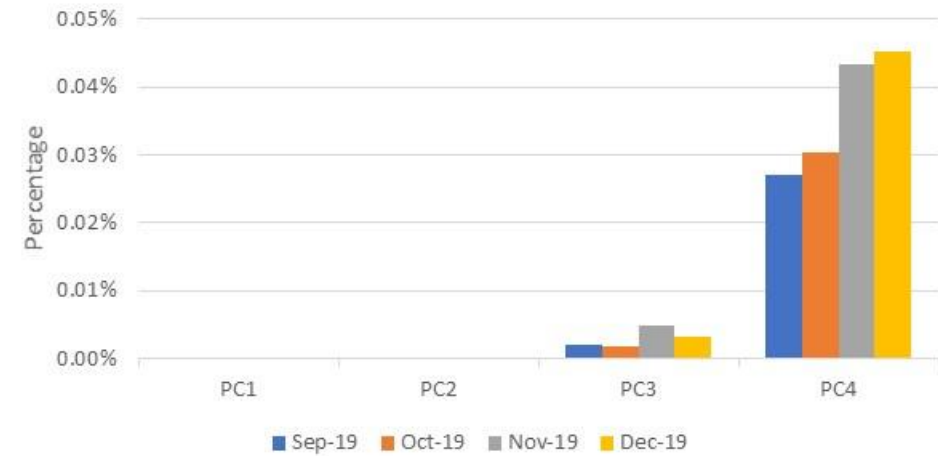
Papeete 0.02%  
Roseau 0.15%  
Praia 0.17%

## PC4

Highest shippers:

Saipan 0.46%  
Praia 0.49%  
Roseau 0.67%

2A.3 No Meter recorded by Product Class and data flows received



# 2A.4- Shipper Transfer Read Performance

Report measures the percentage of Shipper portfolio of opening meters reads provided following confirmation

**Industry movement:**

↑ 0.96% Monthly change  
 ↑ 1.55% Annual change

**Monthly changes:**

|                   |                 |
|-------------------|-----------------|
| ↑ 15.96% Tunis    | ↓ 15.87% Riyadh |
| ↑ 16.68% Kinshasa | ↓ 21.76% Banjul |
| ↑ 33.97% Dili     | ↓ 21.92% Berlin |

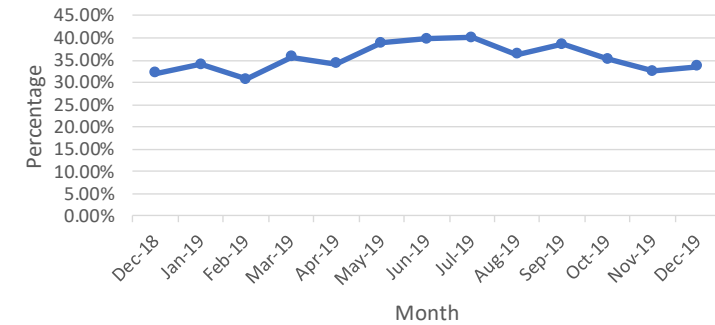
**Observations:**

- Transfer read performance remains low and is significantly below the UNC obligation
- Average transfer read performance over the last 12 months is 33.11%

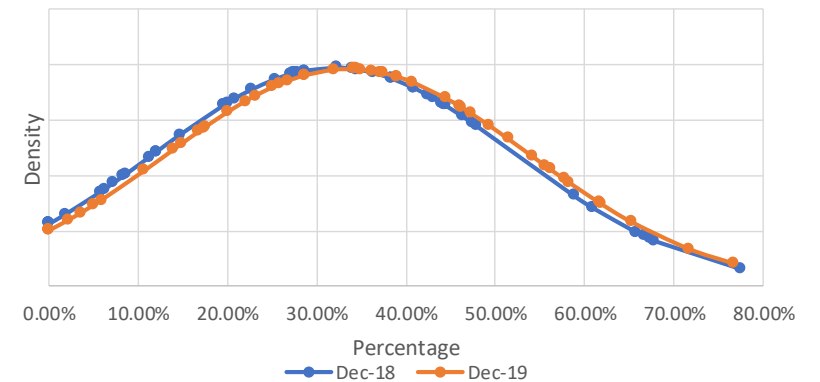
**Recommendations:**

- Industry education on obligation to provide opening meter readings following confirmation.
- Industry engagement on the difficulties providing opening meter reading following confirmation.

2A.4 Percentage of opening meter reads provided by industry total



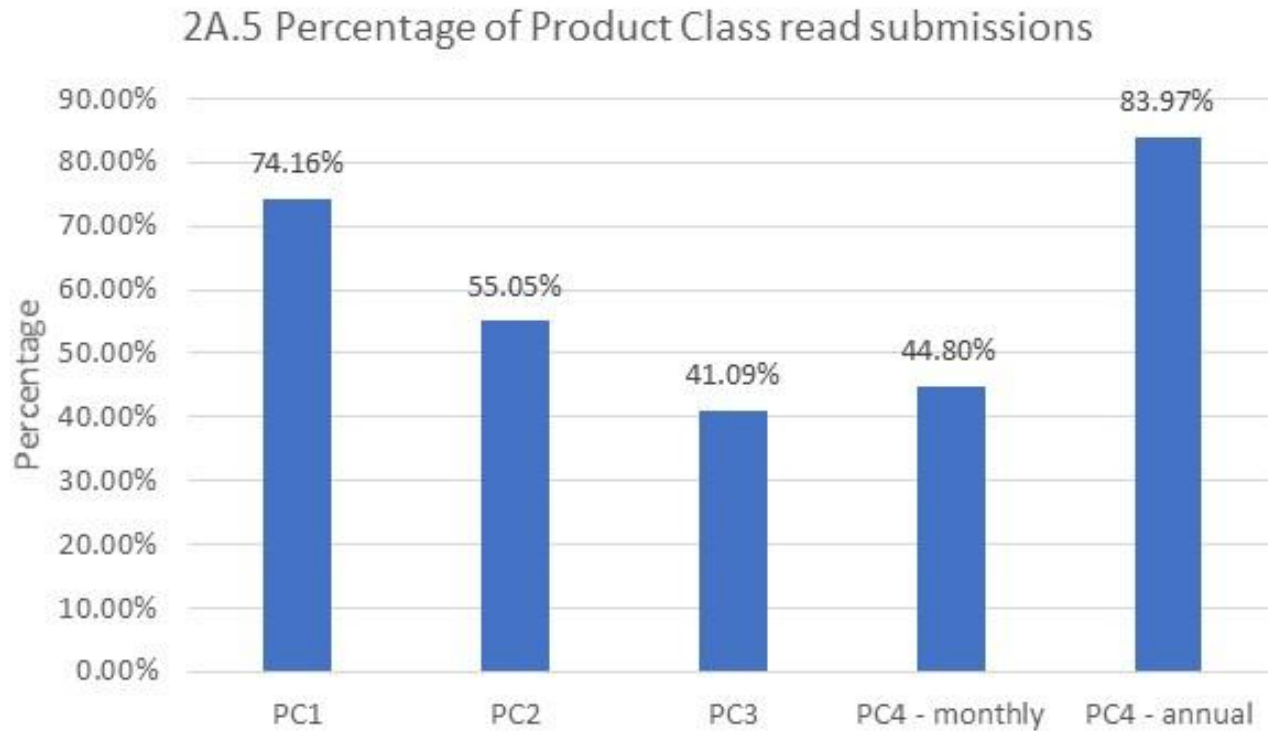
2A.4- 12 Month Comparison of Shipper Transfer Read Performance



# 2A.5- Read Performance

Report measures the percentage of Shipper portfolio submitting reads in December 2019.

PC4 Monthly and Annually read measures the percentage of Shipper portfolio submitting reads in November 2019.



### PC1

- 0.00% Bamako
- 0.00% Luanda
- 0.00% Riyadh

### PC2

- 0% Berlin
- 0% Ramallah
- 0% Roseau
- 0% Warsaw

### PC4 (Monthly)

- 0% Bern
- 0% Baghdad
- 0% Monaco
- 0% Warsaw
- 0% Berlin
- 0% Belmopan
- 0% Maputo

### PC3

- 0% Monaco
- 0% Nuuk
- 0% Philipsburg
- 0% Saipan

### PC4 (Annual)

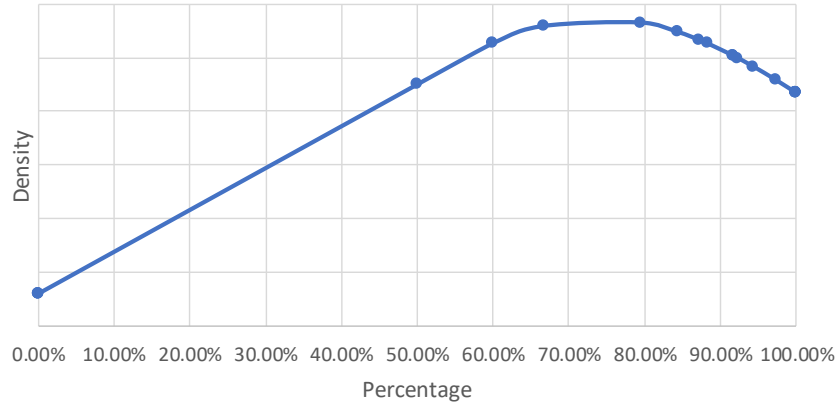
- 0% Bamako
- 3.33% Pyongyang
- 5.22% Bratislava



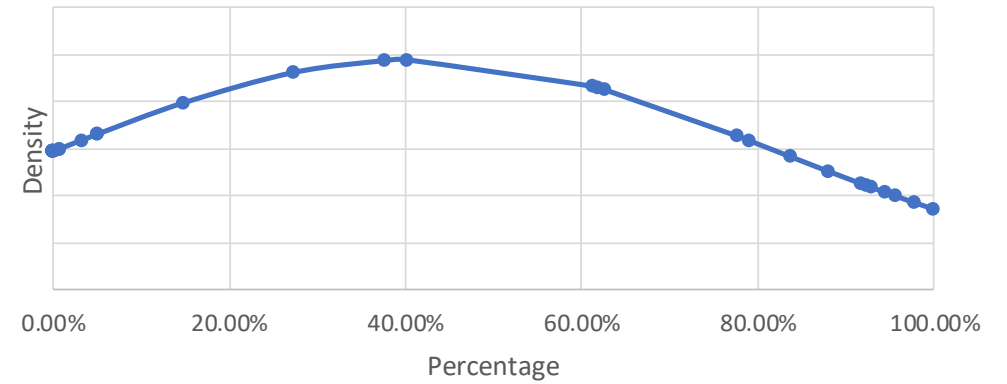
# 2A.5- Read Performance



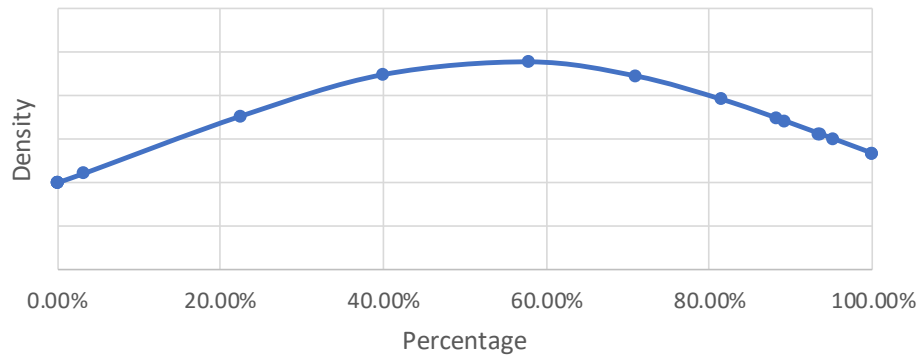
2A.5 Distribution of percentage of PC1 sites providing meter reads



2A.5 Distribution of percentage of PC3 sites providing meter reads



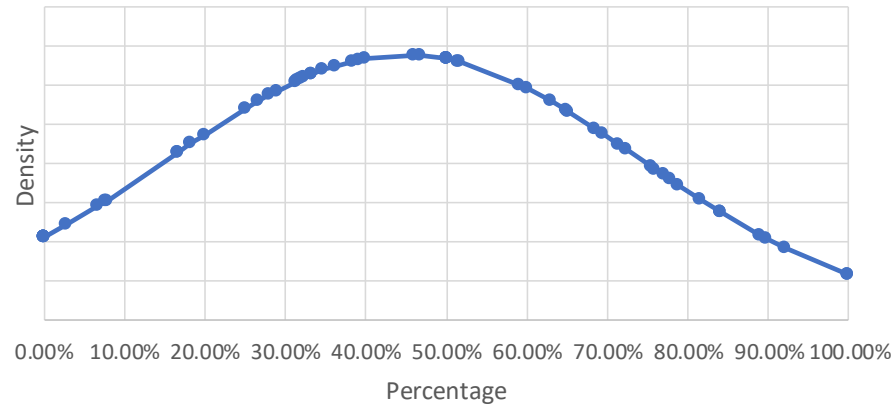
2A.5 Distribution of percentage of PC2 sites providing meter reads



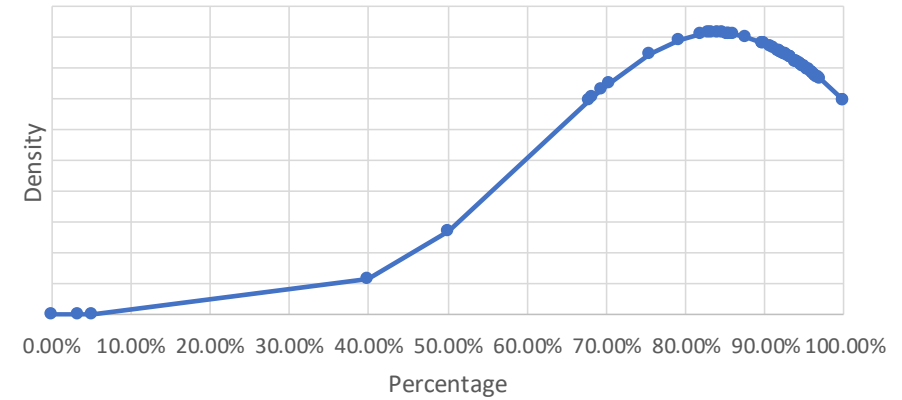
# 2A.5- Read Performance



2A.5 Distribution of percentage of PC4 Monthly sites providing meter reads



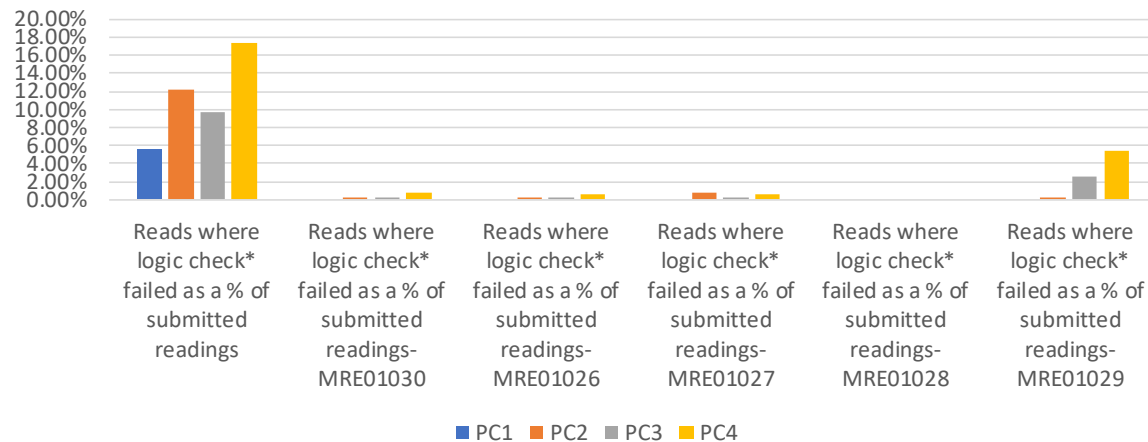
2A.5 Distribution of percentage of PC4 Annual sites providing meter reads



# 2A.6 Meter Read Validity Monitoring

Report measures the percentage of Shipper portfolio where reads submitted failed validation.

2A.6 Percentage of meter read validity by Product Class - December 2019



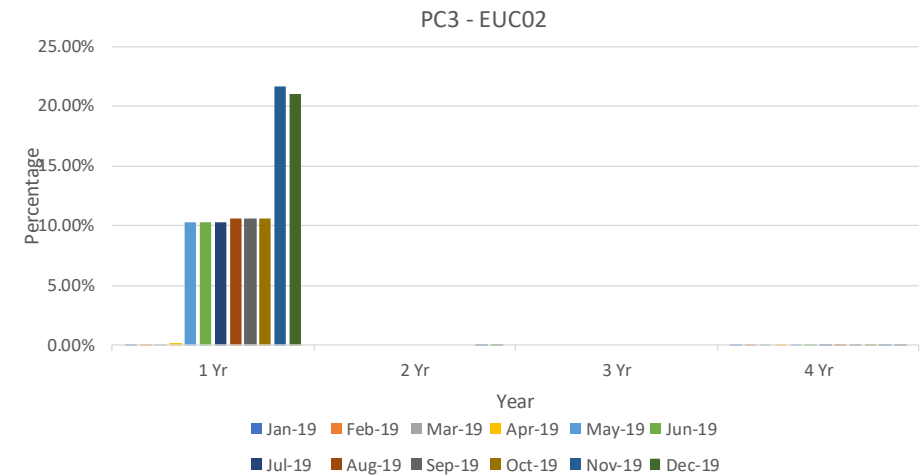
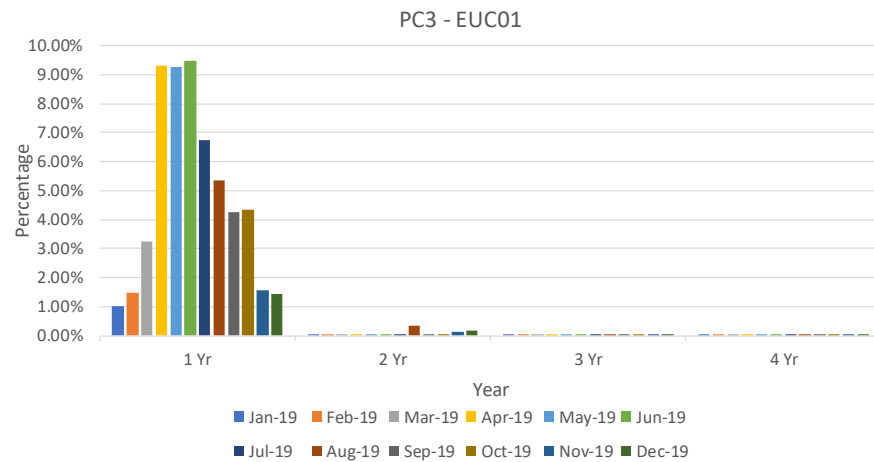
| Product Class | Reads where logic check failed as a % of submitted readings | MRE01030        | MRE01026            | MRE01027         | MRE01028 | MRE01029           |
|---------------|---|-----------------|---------------------|------------------|----------|--------------------|
| 1             | Ankara – 10.00%   |                 |                     |                  |          |                    |
| 2             | Praia – 45.07%  | Saipan – 1.08%  | Saipan – 0.84%      | Praia – 8.45%    |          | Reykjavik – 1.13%  |
| 3             | Lisbon – 97.25%   | Luanda – 1.45%  | Brazzaville – 2.16% | Saipan – 3.40%   |          | Reykjavik – 17.31% |
| 4             | Daligas – 96.09%  | Tripoli – 7.90% | Kinshasa – 5.80%    | Kinshasa – 2.77% |          | Bissau – 68.42%    |

# 2A.7 No Reads Received for 1, 2, 3 or 4 years

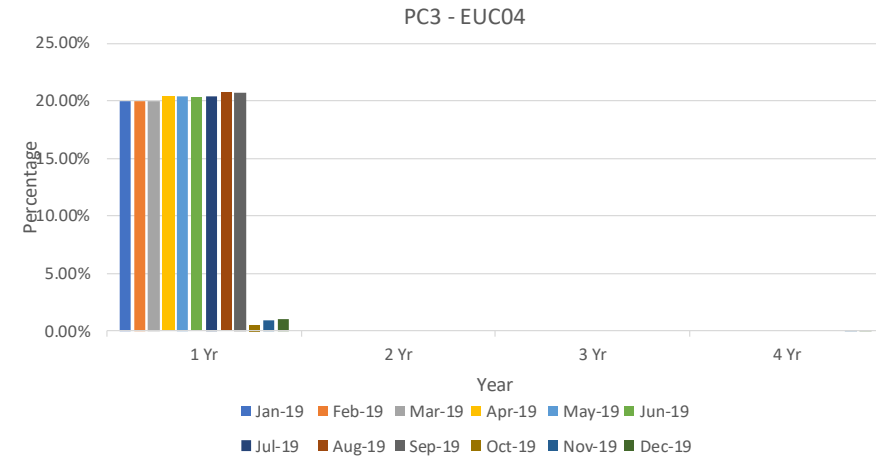
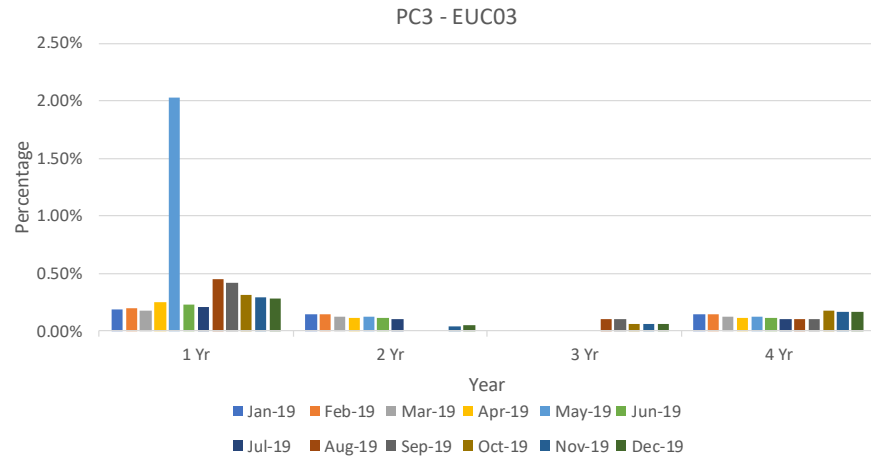


Report measures the percentage of Shipper portfolio in the specified AQ band without a meter reading for the specified period.

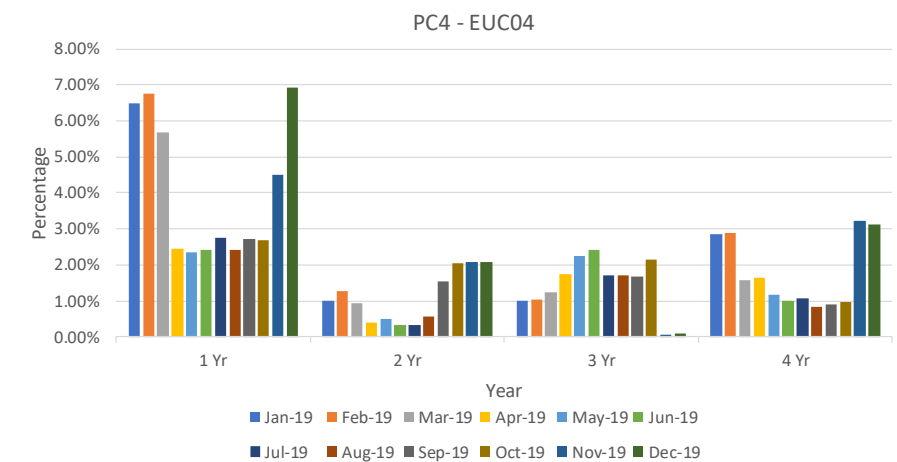
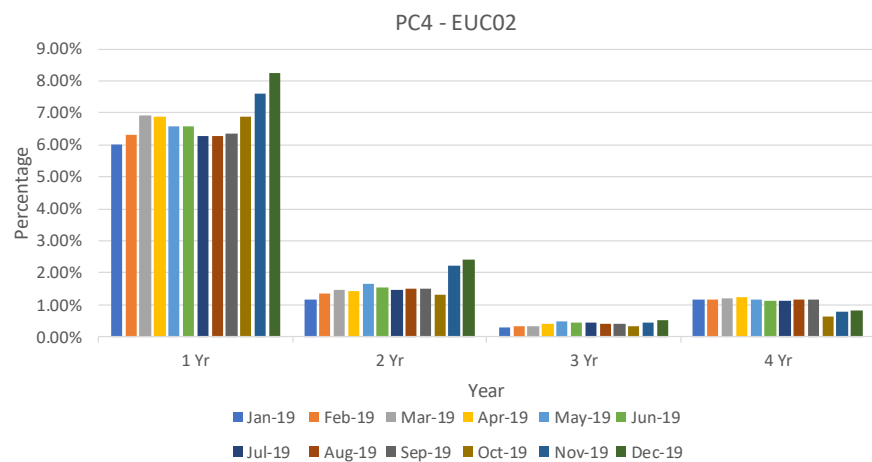
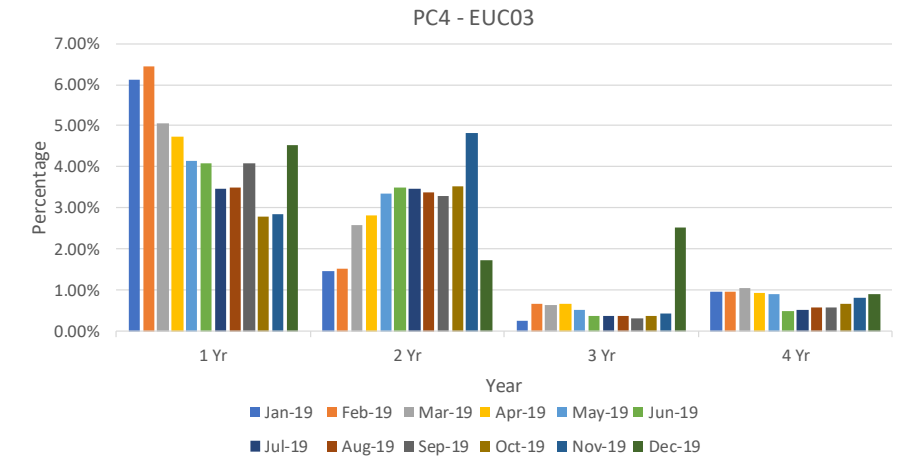
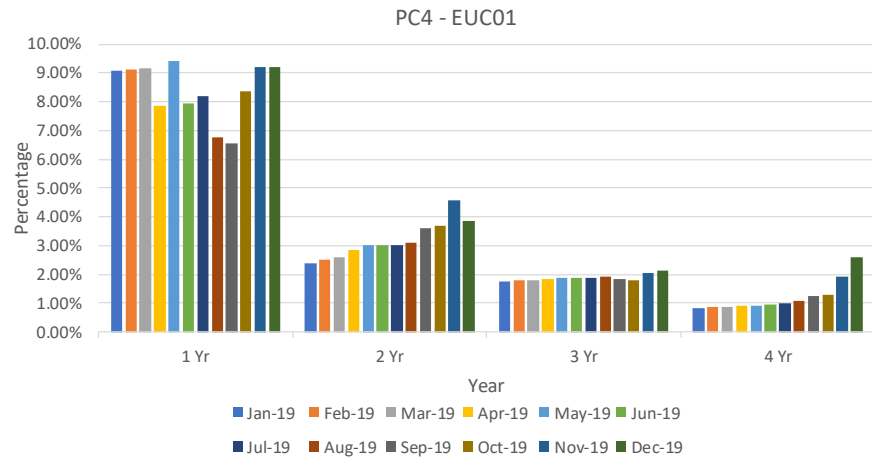
## PC1 & PC2 Limited or no data both product classes



# 2A.7 No Reads Received for 1, 2, 3 or 4 years



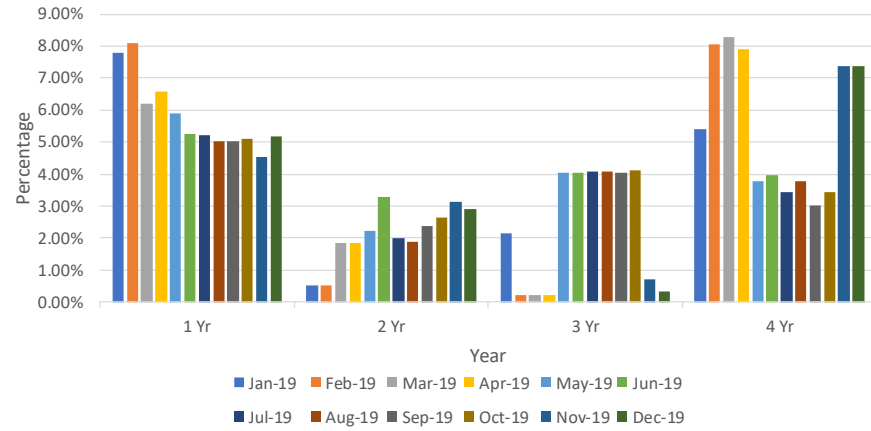
# 2A.7 No Reads Received for 1, 2, 3 or 4 years



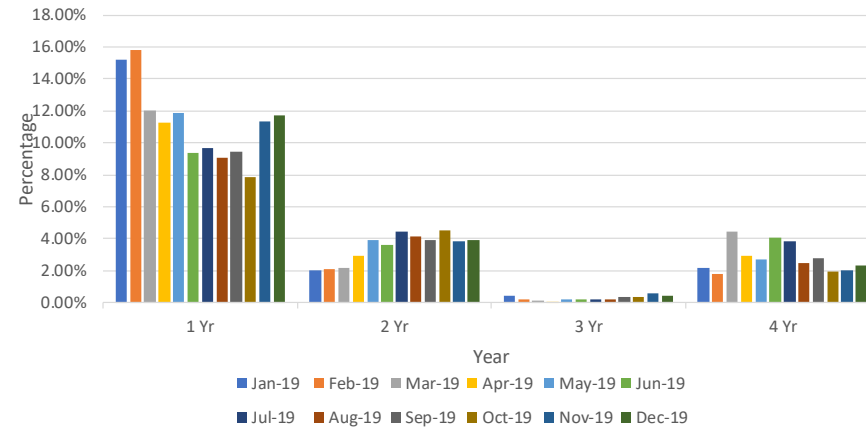
# 2A.7 No Reads Received for 1, 2, 3 or 4 years



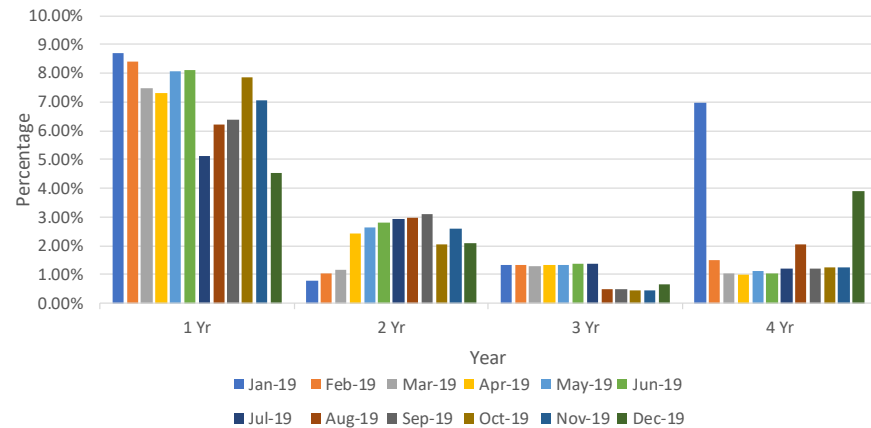
PC4 - EUC05



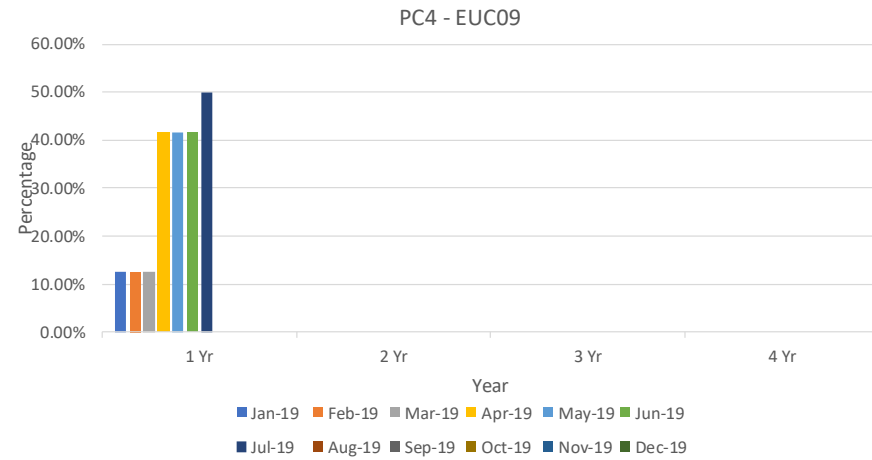
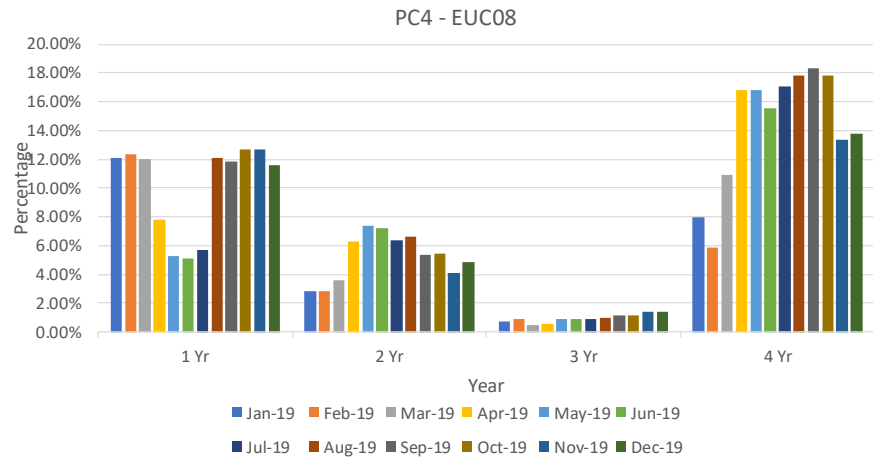
PC4 - EUC07



PC4 - EUC06



# 2A.7 No Reads Received for 1, 2, 3 or 4 years





# 2A.8 AQ Correction by Reason Code

Report measures the count of Shipper Portfolio of MPRNs where AQ Correction process Used

Changes in total number of AQ corrections used

**Reason Code 01- Confirmed Theft**

↓ 1 Monthly Change  
↓ 14 Annual Change

**Reason Code 02- Change in Consumer Plant**

↑ 50599 Monthly Change  
↑ 49977 Annual Change

**Reason Code 03- Commencement of New Business**

↓ 26 Monthly Change  
↓ 181 Annual Change

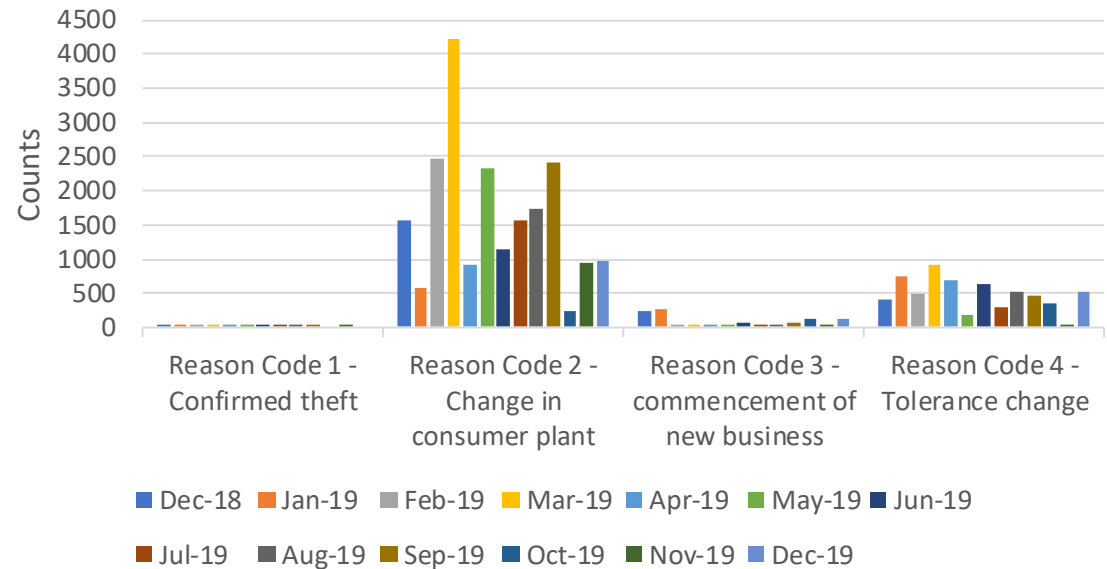
**Reason Code 04- Tolerance Change**

↓ 308 Monthly Change  
↓ 520 Annual Change

**Observations:**

- Change in consumer plants continues to account for the highest proportion of AQ corrections.
- Change in consumer plant spiked in December 2019 due to performance from one Shipper (has been excluded from graph) – working with CAM on resolution

2A.8 Count of AQ Corrections used by reason code



# 2A.9 Standard CF AQ > 732,000 kWh

Report measures the count of sites with an AQ>732,000 kWh, but having a standard correct factor

## EUC04

↑ 97 Monthly Change  
 ↓ 3550 Annual Change

## EUC07

↑ 1 Monthly Change  
 ↓ 28 Annual Change

## EUC05

↑ 4 Monthly Change  
 ↓ 353 Annual Change

## EUC08

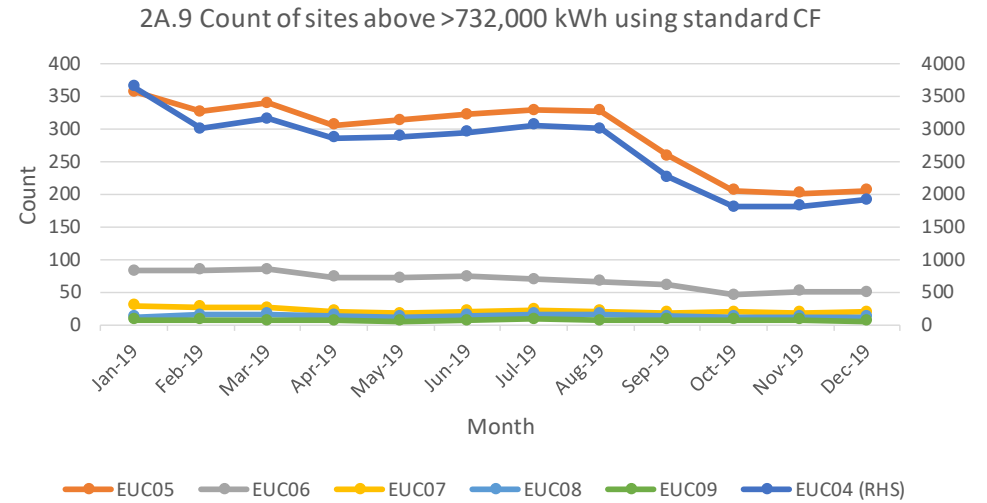
No Monthly Change  
 ↓ 11 Annual Change

## EUC06

↓ 1 Monthly Change  
 ↓ 83 Annual Change

## EUC09

↓ 2 Monthly Change  
 ↓ 9 Annual Change



### Observations:

- EUC04 continue to track significantly above the industry average and a much higher use of standard correction factors compared to other EUC bands
- The use of standard correction factors has decreased significantly since October 2018, though improvement had plateaued in recent months.

# 2A.10 Replaced Meter Reads

Report measures the count of meter reading replacements which results in reconciliation adjustments.

## EUC01

↓ 52293 Monthly Change  
↓ 5928 Annual Change

## EUC02

↑ 102 Monthly Change  
↓ 1134 Annual Change

## EUC03

↑ 153 Monthly Change  
↓ 202 Annual Change

## EUC04

↓ 3 Monthly Change  
↓ 37 Annual Change

## EUC09

No monthly change  
↓ 1 Annual Change

## EUC05

↓ 11 Monthly Change  
↓ 13 Annual Change

## EUC06

No monthly change  
↓ 1 Annual Change

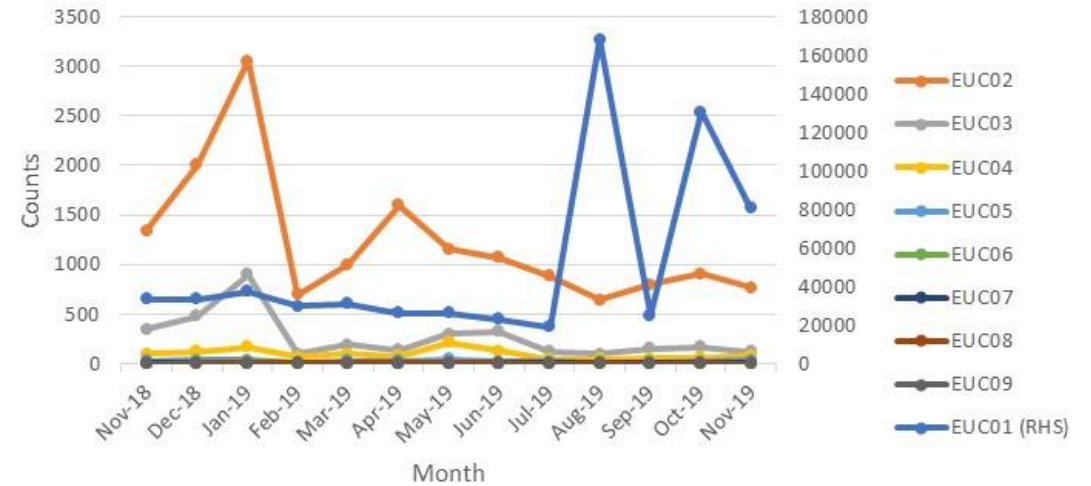
## EUC07

No monthly change  
↑ 2 Annual Change

## EUC08

↑ 2 Monthly Change  
↓ 3 Annual Change

2A.10 Count of meter reading replaced by EUC



### Observations:

- EUC01 has seen an upward trend in replaced meter reads in August 2019 and again in October due two individual Shippers performance

- These are replacing estimated reads with actual reads as a result of sites moving from PC4 to PC3.

# Appendix – PARR report details



| Sr No | Topic   | Details  | Split By | 12 Rolling Months | Format                 | e.g. For Nov Report | Condition | Comments |
|-------|---|--|----------|-------------------|------------------------|---------------------|-----------|----------|
| 1     | 2A - Estimated & Check Reads used for Gas Allocation, and consumption adjustments for Product Classes 1 & 2 | <p>Need to count everyday portfolio and count mprn where read has been estimated and no actual present on the same day .</p> <p>Check Read : For check reads we would need to check , as of reporting day how many class 1 &amp; 2 MPRNs are present with DRE/AMR.</p> <p>For those MPRNs we have site visit read &lt;=14 months and no subsequent site visit read . Those are outstanding ones per shipper.</p> | Class    | Annual            | Percentage             | September           | M-2       |          |
| 2     | 2A - No Meter Recorded in the Supply Point Register   | AQ Band wise , AQ band based on report run day . Class wise different table And AQ Band. Exclude NTS connected Sites & Telemeterd. Exiting SHPK - Topic - Confirmed No Asset Report  | Class    | Annual            | Count & B - Percentage | Nov                 | M         |          |
| 3     | No Meter Recorded in the Supply Point Register and data flows received by Xoserve                           | Same as above but additionally need to check if for above MPRNs any Data Flow Means - > Asset Update , C & D Store & Reads received in that month  | Class    | Annual            | Count & B - Percentage | Additional MPRNs    |           |          |
| 4     | 2A - Shipper Transfer Read Performance  | M-2 is considered – Open<br>OPNT_REQ_FOLL_CON<br>OPNT_RECEIVED_10  | Class    | Annual            | Percentage             | September           | M-2       |          |
| 5     | Read Performance  | As per frequency we need to check if we have received the read e.g. month read site will check if we have received the read in month .Class and shipper transfer are excluded .6 Monthly read site need to consider yearly ,it is not in UNC. It will be like MUR logic<br>M-2 , exclude sites where class changes happened in M-2 , shipper changes   | Class    |                   | Percentage             | September           | M-2       |          |



# Appendix – PARR report details

| Sr No | Topic   | Details   | Split By     | 12 Rolling Months | Format     | e.g. For Nov Report | Condition | Comments  |
|-------|---|---|--------------|-------------------|------------|---------------------|-----------|---|
| 6     | 2A - Meter Read Validity Monitoring                           | <p>MRE01026 :Reading breached the lower Outer tolerance.<br/> MRE01027 :Reading breached the Upper Outer tolerance.<br/> MRE01028 :Reading breached the lower Inner tolerance value and no override flag provided.<br/> MRE01029 :Reading breached the upper Inner tolerance value and no override flag provided.<br/> MRE01030 :Override tolerance passed and override flag provided</p> <p>We can build this from DUK_ARSR , by checking failed reads . DUK_READ = We can get how many successfull reads received based on Status =U . Failed once are with status =F</p> | Reason Codes |                   | Percentage | October             | M-1       |   |
| 7     | No reads received for 1,2,3 or 4 years ( excludeds estimated  | <p>Per class table , per AQ Band ,Need to ignore estimates for all classed<br/> Logic is similar to existing SHPK Logic - NO_READ_2Y_3Y_B73200<br/> Here we would need to create 4 counts No reads received for 1 , 2 , 3 , 4 years<br/> sepeartely as per layout</p>   | AQ Band      | Annual            | Percentage | Nov                 | M         |   |
| 8     | 2A - AQ Corrections   | <p>AQ correction by reason code :<br/> Switch Type = 50 , Switch View = 50 , Switch status = LI<br/> Reason code per table , Reason code is new field added in ISU BW - DS<br/> OUC_SWTDOC Switch Document new field added in DS - ZZ_AQ_REASON</p>   | AQ Band      | Annual            | count      | October             | M-1       |   |
| 9     | 2A - Standard Correction Factors for sites with AQ > 732, MWH | <p>Standard correction factor by AQ Band<br/> Count of meter points where replacement reads received by AQ Band ,only for class 3&amp; 4 ,</p>  | AQ Band      | Annual            |            | Nov                 | M         | Report should only include AQs above 732000. Currently including >=732000 |
| 10    | 2A - Replaced Meter Reads                                     | <p>Replaced meter reads are identified with DUK_READ where<br/> read reason = R , Upload Status = U , we would need to add AQ Band either in<br/> DUK_READ or consider while processing</p>   | AQ Band      | Annual            |            | October             | M-1       |   |

PAFA@Gemserv.com

