

# PARR Dashboards

---

14<sup>th</sup> July 2020

PAFA

# 2A.1 Estimated & Check Reads - Product Classes 1 & 2

Report measures the percentage of each shippers portfolio where estimated reads were provided. Count of each shippers portfolio where check reads were not provided

## PC1

### Industry movement:

- ↓ 0.16% - Monthly change
- ↑ 6.46% - Annual change

### Monthly changes:

- ↑ 1.24% Gitega
- ↑ 2.26% Philipsburg
- ↑ 7.29% Brazzaville
- ↓ 2.80% Reykjavik
- ↓ 2.98% Rome
- ↓ 3.22% Ankara

## PC2

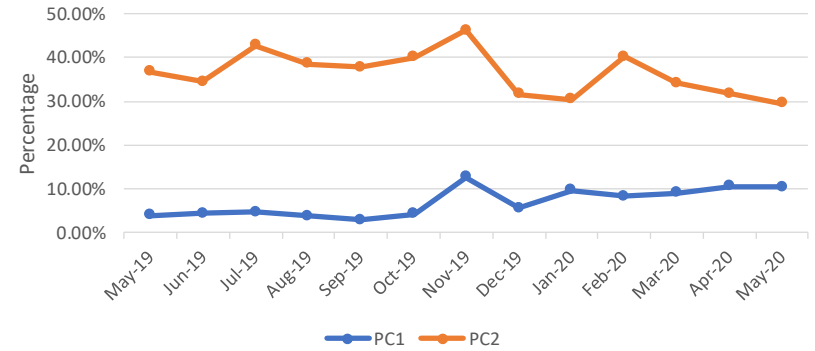
### Industry movement:

- ↓ 2.30% Monthly change
- ↓ 7.25% Annual change

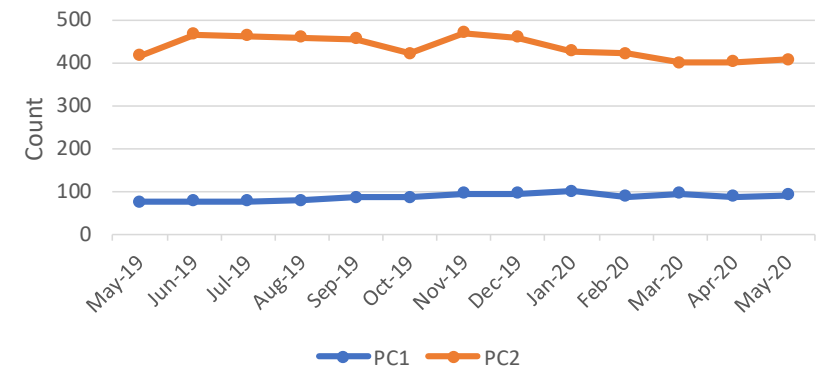
### Monthly changes:

- ↑ 0.71% Rome
- ↑ 1.25% Gitega
- ↑ 5.31% Reykjavik
- ↓ 5.69% Brazzaville
- ↓ 15.90% Philipsburg
- ↓ 23.17% Thimphu

2A.1 Percentage of Estimated Reads for PC1 & PC2



2A.1 Count of Check Reads not completed for PC1 and PC2



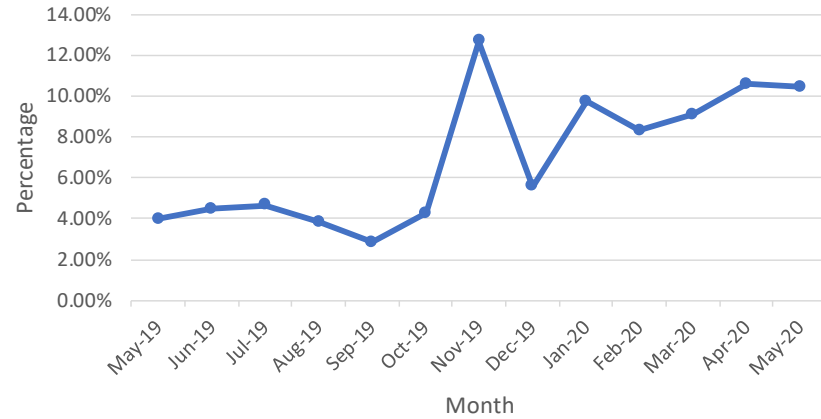
## Observations:

- PC2 Estimated Read Performance continues to decline, with performance returning to the levels seen at the end of 2019.
  - This decline is expected to continue.
- The number of check reads for PC2 has significantly increased since May 2019 – appears to have stabilised c. 400 check reads not completed
  - Working with CAMs to provide industry education piece on submitting check reads

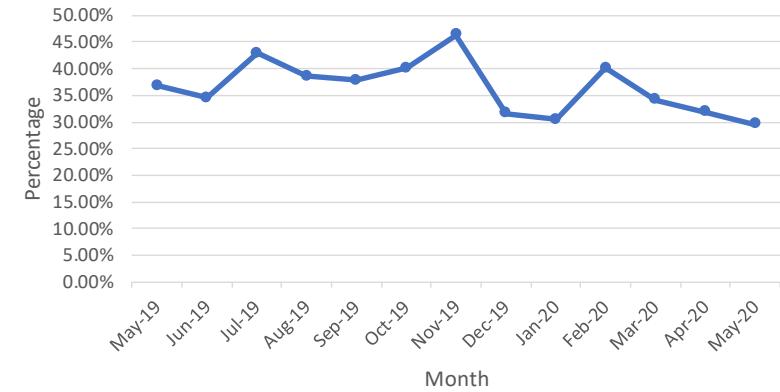
# 2A.1 Estimated & Check Reads - Product Classes 1 & 2



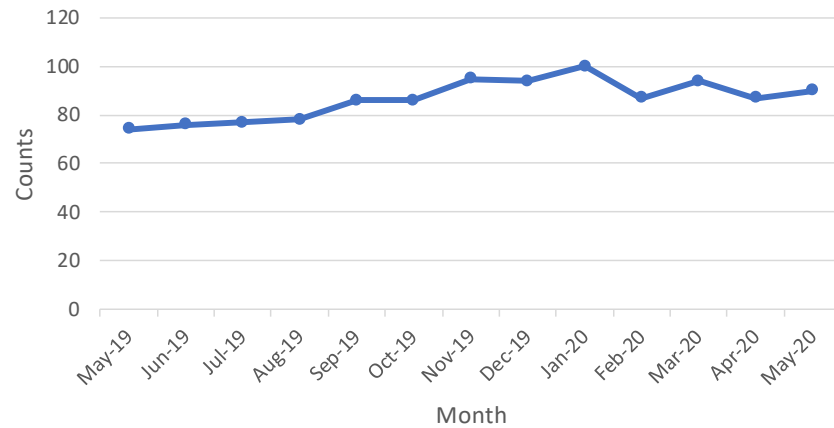
2A.1 PC1 Estimated Read Totals



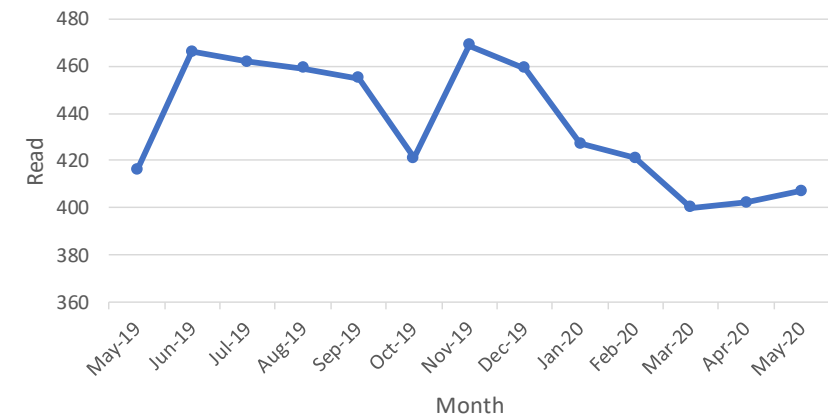
2A.1 PC2 Estimated Read Totals



2A.1 PC1 Check Reads Total



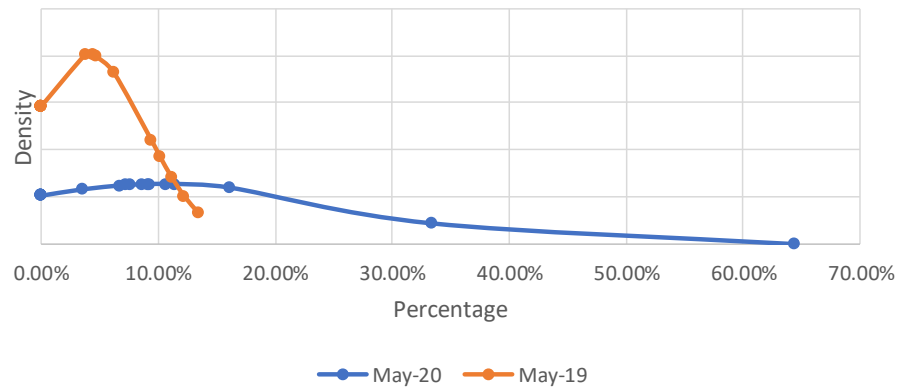
2A.1 PC2 Check Read Totals



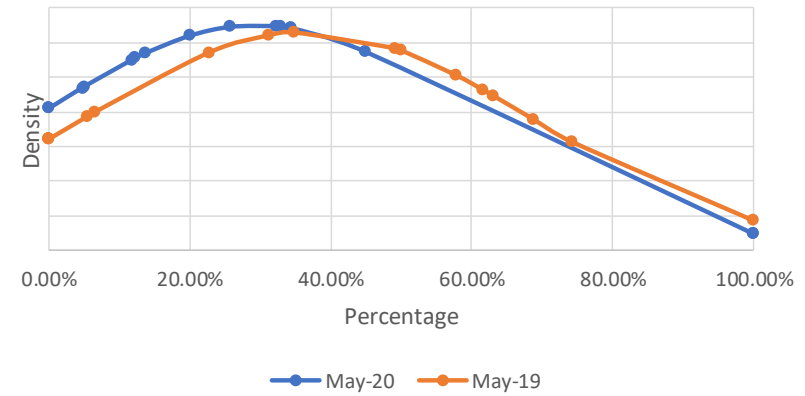
# 2A.1 Estimated & Check Reads - Product Classes 1 & 2



2A.1- 12 Month comparison (Average of PC1 Estimated Reads)



2A.1- 12 month comparison (Average of PC2 Estimated Reads)



# 2A.2 – No Meter Recorded



Report measures the percentage of each shippers portfolio where no meter recorded in the supply point register

## PC1

Highest shippers:  
Valletta **33.33%**

## PC2

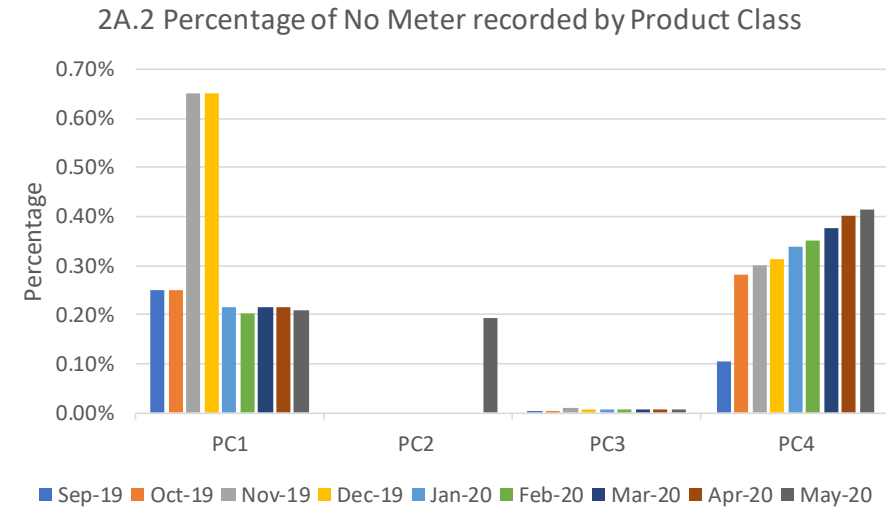
Highest shippers:  
Tiraspol **25%**

## PC3

Highest shippers:  
Praia **0.51%**  
Roseau **0.18%**

## PC4

Highest shippers:  
Monrovia **7.33%**  
Oranjestad **2.48%**  
Bratislava **1.37%**



### Observations:

- Increased in the number of no meters recorded on the supply point register has increased significantly within PC4 since September 2019 – a trend which appears to be continuing.
- The increase in PC1 is primarily due to changes in the total number of supply points in the product class and not driven by the change in total number of no meters recorded

# 2A.3 No Meter Recorded and data flows received



Report measures the percentage of each shippers portfolio where no meter recorded in the supply point register and data flows received

**PC1 & PC2**  
0% for both product classes

**PC3**

**PC4**

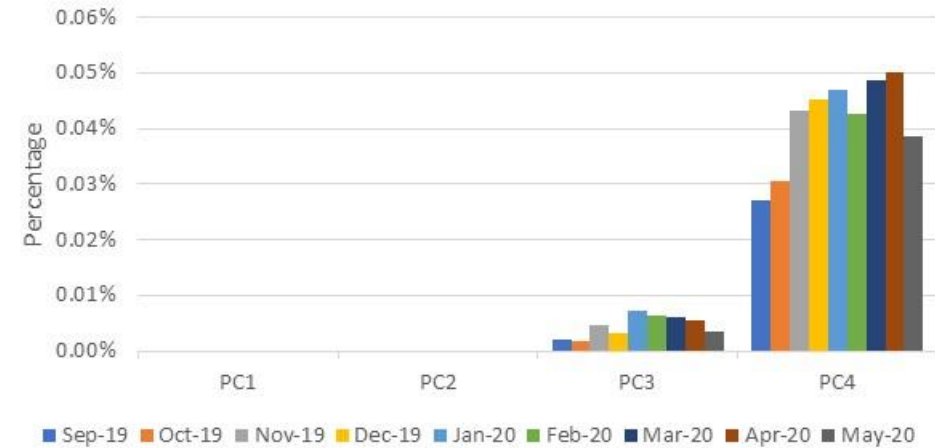
**Highest shippers:**

Praia 0.13%  
Roseau 0.18%

**Highest shippers:**

Oranjestad 0.28%  
Roseau 0.42%  
Saipan 0.55%

2A.3 No Meter recorded by Product Class and data flows received



# 2A.4- Shipper Transfer Read Performance

Report measures the percentage of Shipper portfolio of opening meters reads provided following confirmation

**Industry movement:**

↓ 0.93% Monthly change

↑ 1.15% Annual change

**Monthly changes:**

↑ 17.13% Bern

↑ 19.40% Nuuk

↑ 25.00% Taipei

↓ 34.42% Sukhumi

↓ 36.05% Praia

↓ 56.30% Luanda

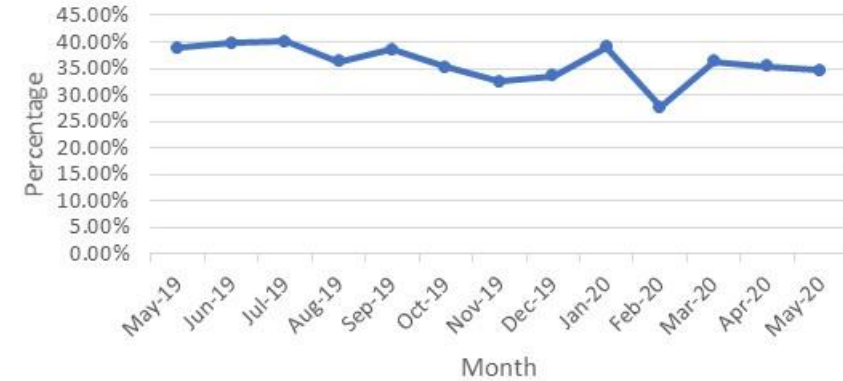
**Observations:**

- Transfer read performance remains low and is significantly below the UNC obligation
- Average transfer read performance over the last 12 months is 35.90%

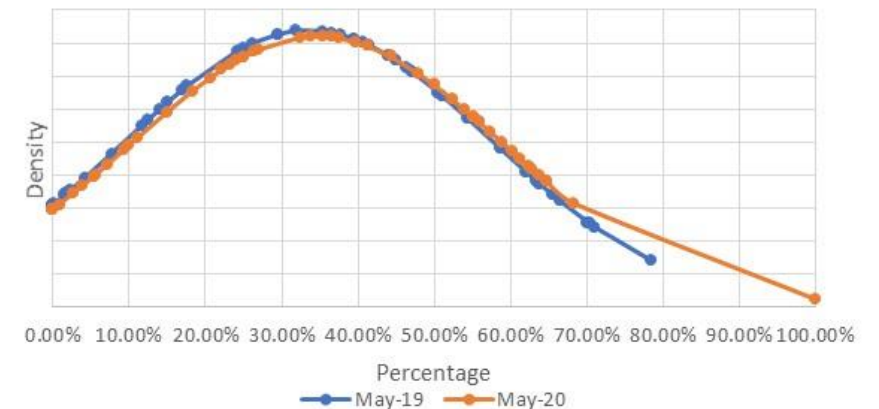
**Recommendations:**

- Industry education on obligation to provide opening meter readings following confirmation.
- Industry engagement on the difficulties providing opening meter reading following confirmation.

2A.4 Percentage of opening meter reads provided by industry total



2A.4- 12 Month Comparison of Shipper Transfer Read Performance



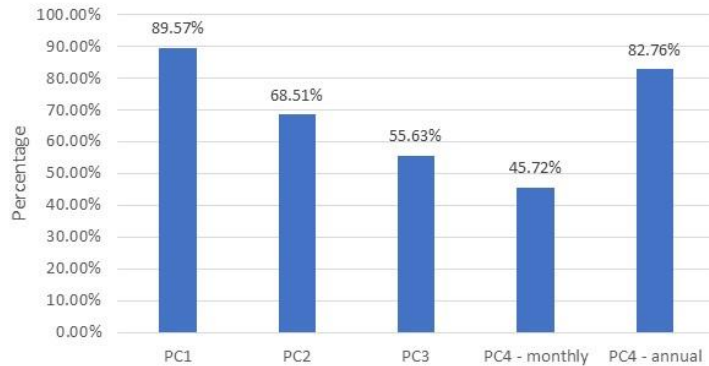
# 2A.5- Read Performance

Report measures the percentage of Shipper portfolio submitting reads in April 2020.

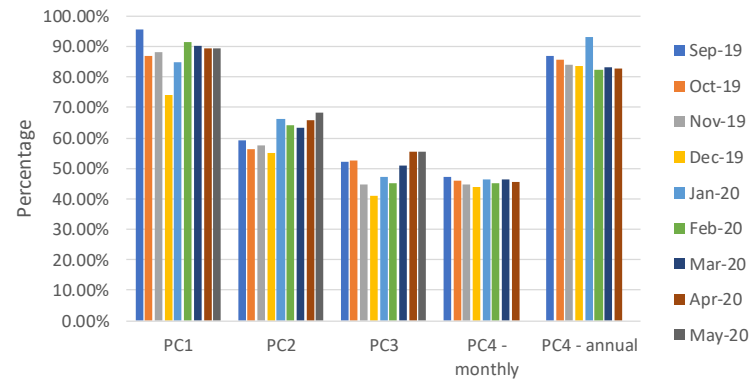
PC4 Monthly and Annually read measures the percentage of Shipper portfolio submitting reads in March 2020.



2A.5 Percentage of Product Class read submissions



2A.5 Percentage of Product Class read submissions



## PC1

- 35.63% Valletta
- 66.67% Washington
- 83.87% Ankara

## PC2

- 0% Praia
- 0% Berlin
- 55% Athens

## PC3

- 0% Castries
- 0% Luxembourg
- 0% Oranjestad
- 0% Phillipsburg
- 0% Wellington

## PC4 (Monthly)

- 0% Baghdad
- 0% Bern
- 0% Bratislava
- 0% Khartoum
- 0% Maputo
- 0% Nairobi

## PC4 (Annual)

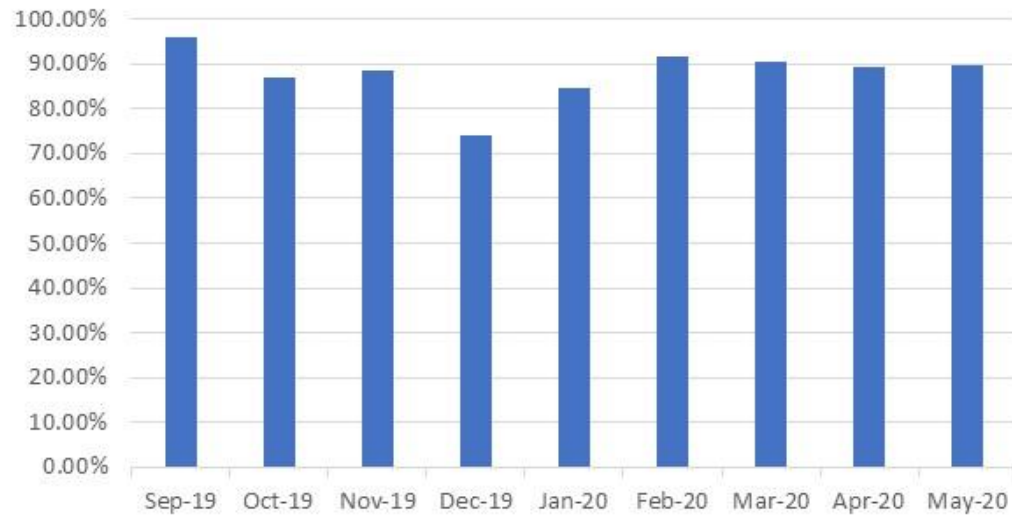
- 0.37% Bratislava
- 52.67% Monrovia
- 55.84% Bucharest



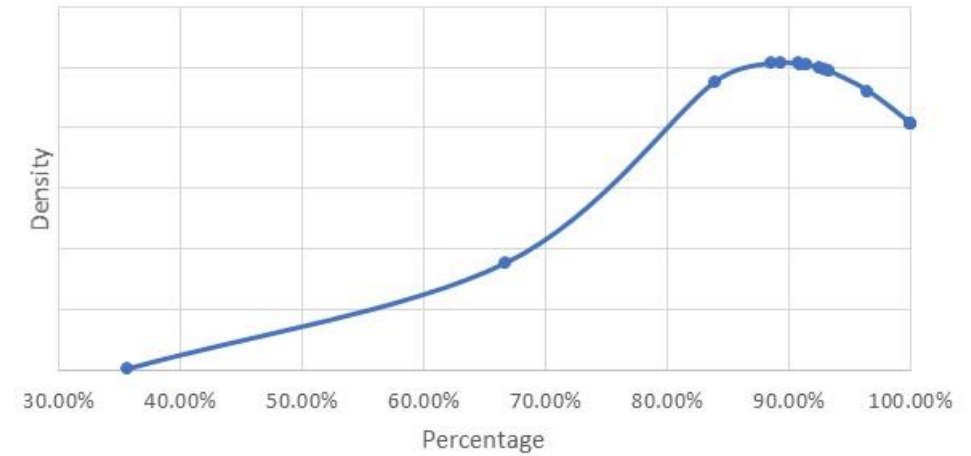
# 2A.5- Read Performance (PC1)



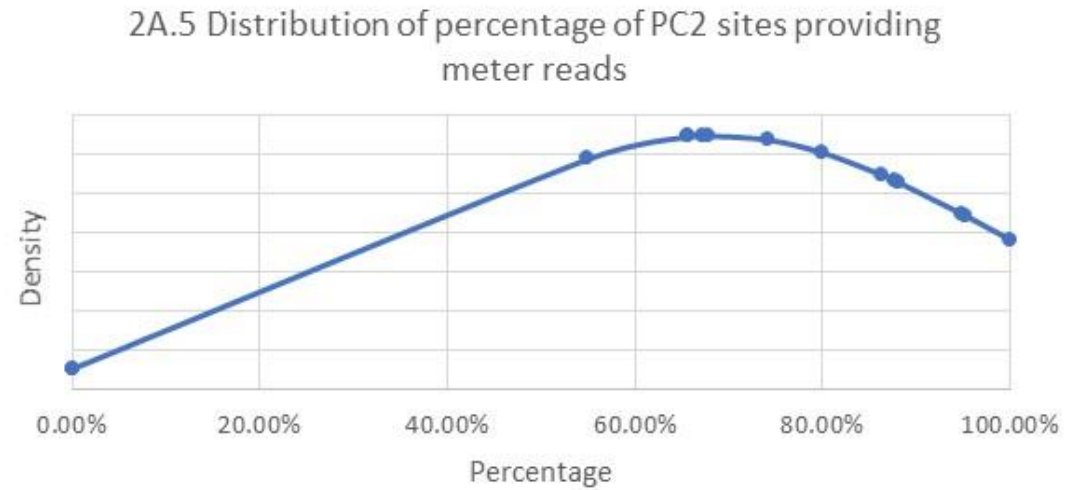
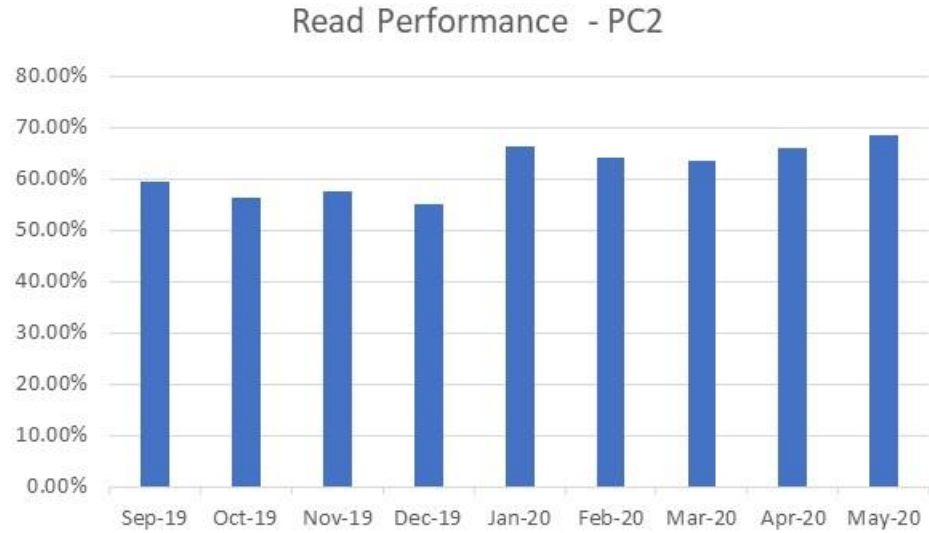
Read Performance - PC1



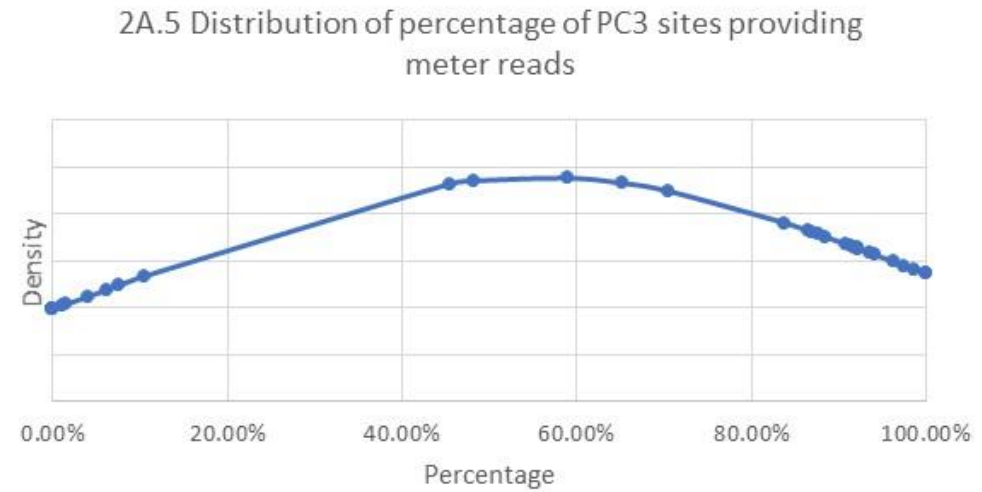
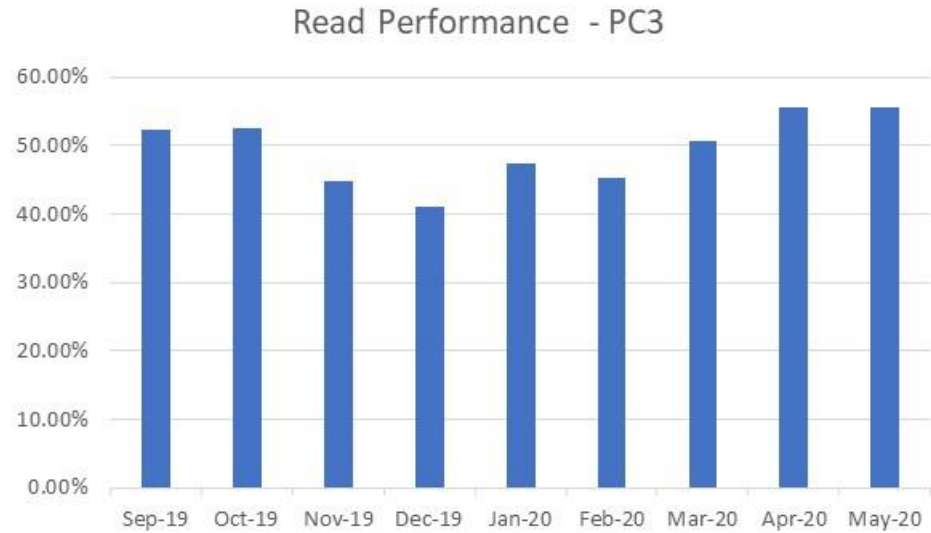
2A.5 Distribution of percentage of PC1 sites providing meter reads



## 2A.5- Read Performance (PC2)



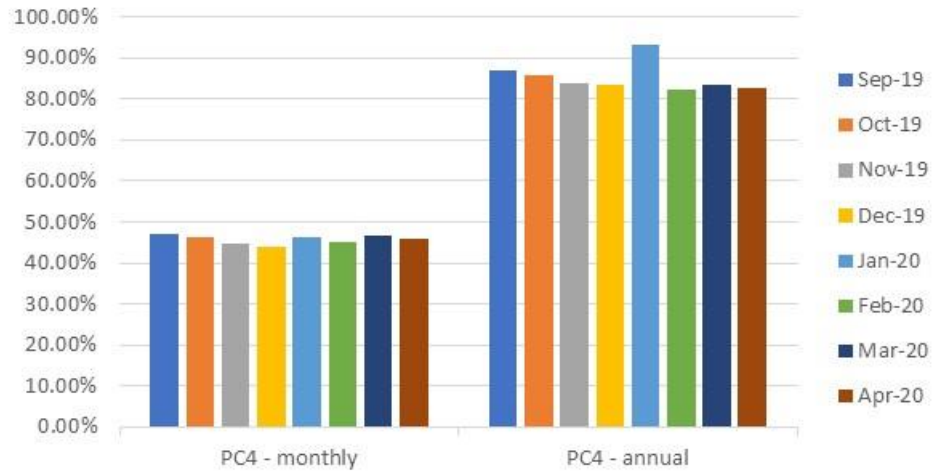
# 2A.5- Read Performance (PC3)



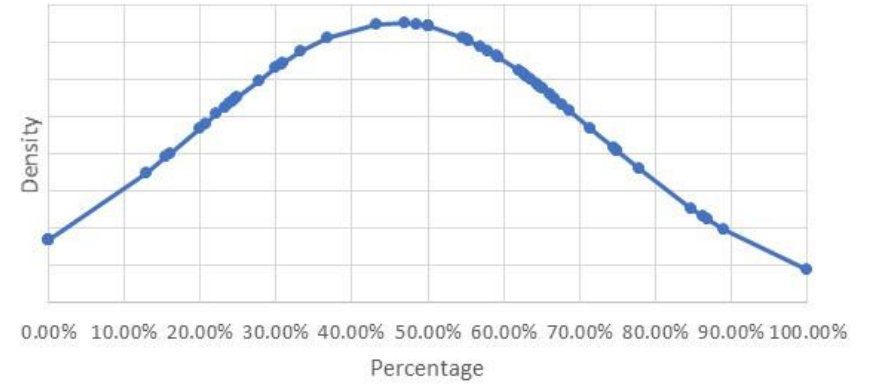
# 2A.5- Read Performance (PC4)



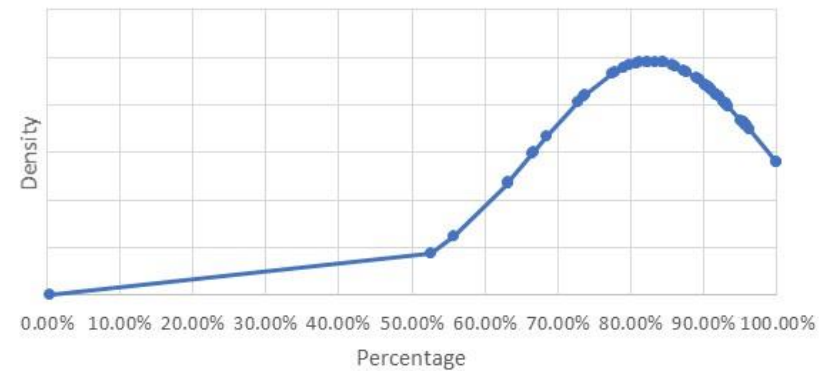
Read Performance - PC4



2A.5 Distribution of percentage of PC4 Monthly sites providing meter reads



2A.5 Distribution of percentage of PC4 Annual sites providing meter reads

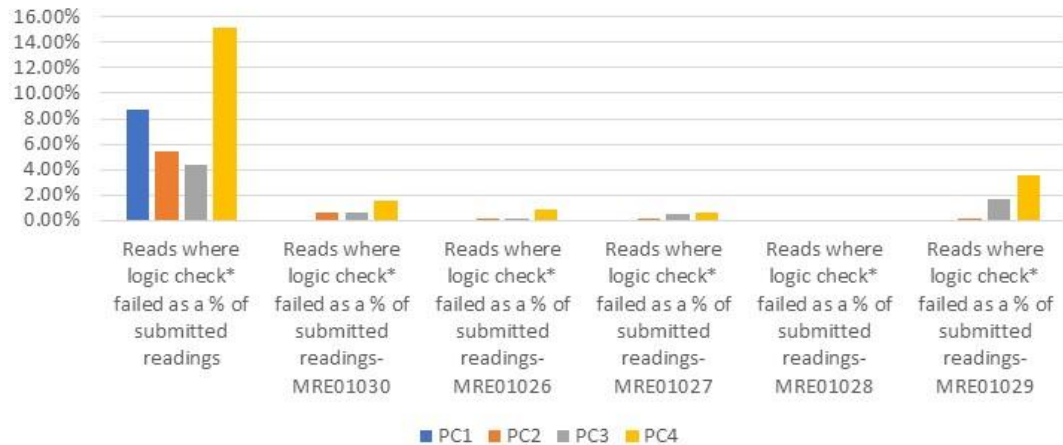


# 2A.6 Meter Read Validity Monitoring

Report measures the percentage of Shipper portfolio where reads submitted failed validation.



2A.6 Percentage of meter read validity by Product Class - May 2020

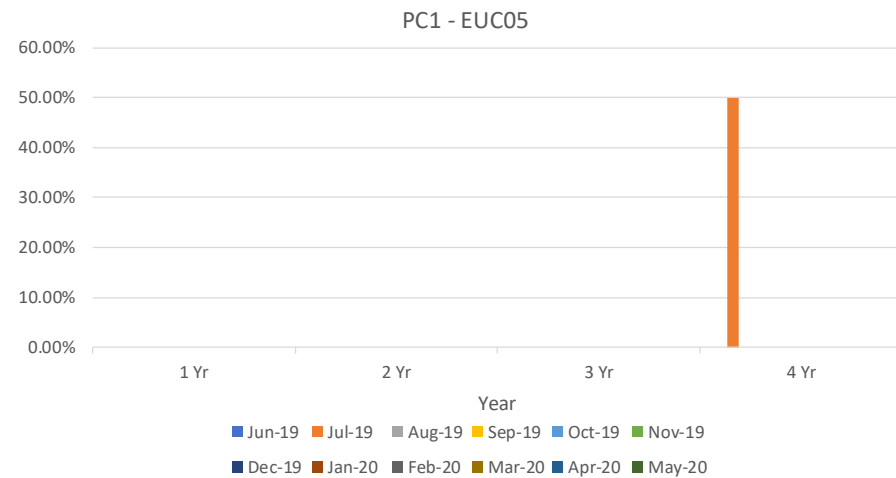
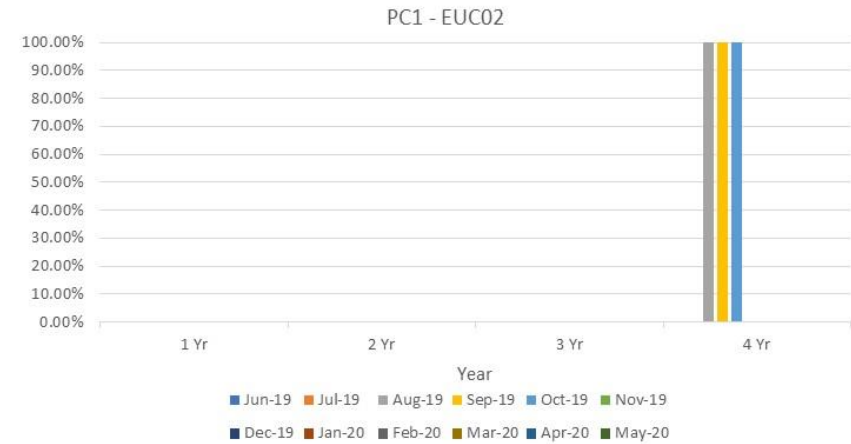
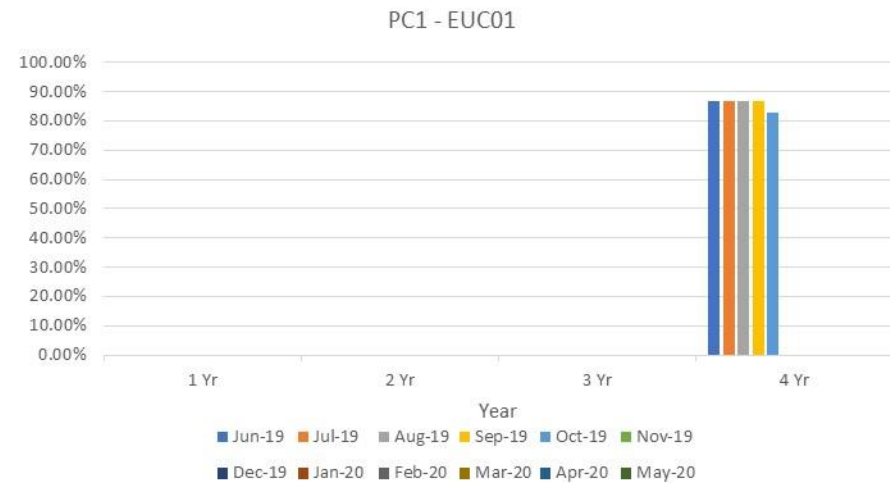


Product Class	Reads where logic check failed as a % of submitted readings	MRE01030	MRE01026	MRE01027	MRE01028	MRE01029
1	Valletta – 32.63%					
2	Washington – 13.53%	Athens – 4.76%	Papeete– 0.56%	Saipan – 1.18%		Tiraspol– 0.98%
3	Manama – 45.80%	Monaco – 15.96%	Roseau– 0.42%	Saipan – 4.35%		Monaco – 43.19%
4	Thimphu – 85.21%	Monaco – 50.00%	Kinshasa – 5.54%	Valletta – 8.06%		Bissau– 50.00%

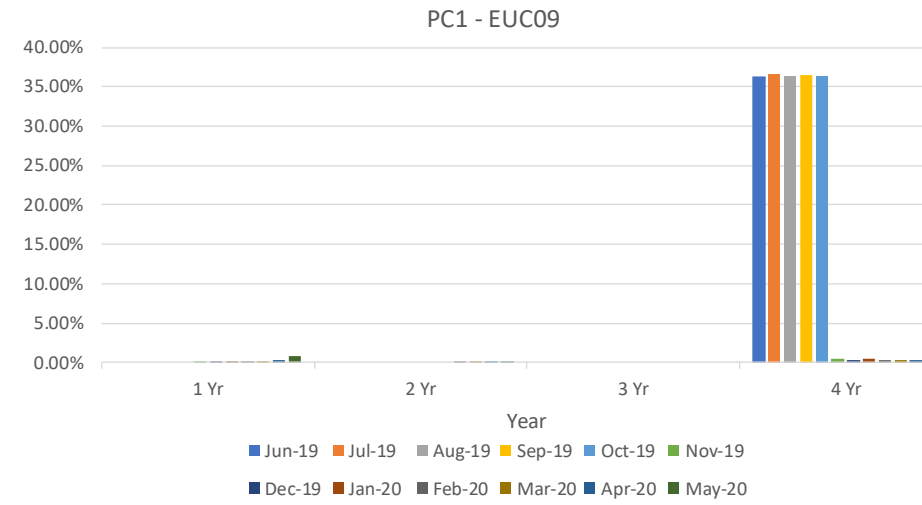
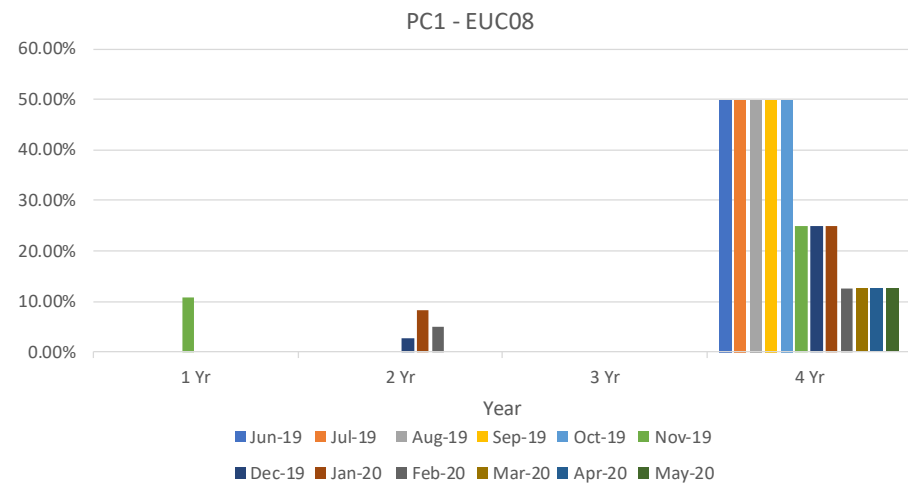
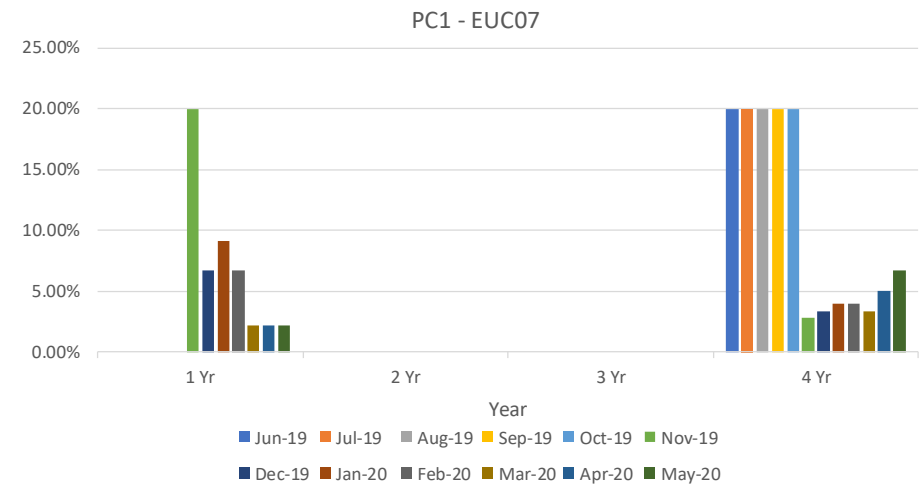
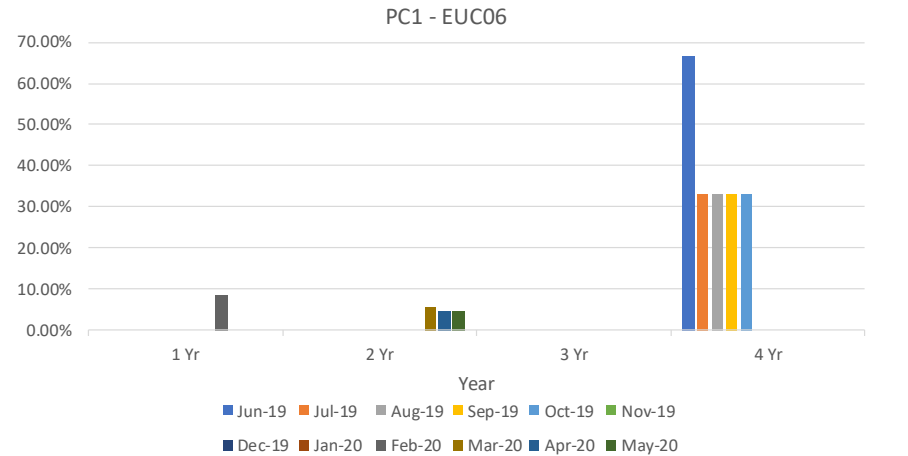
# 2A.7 No Reads Received for 1, 2, 3 or 4 years – Product Class 1



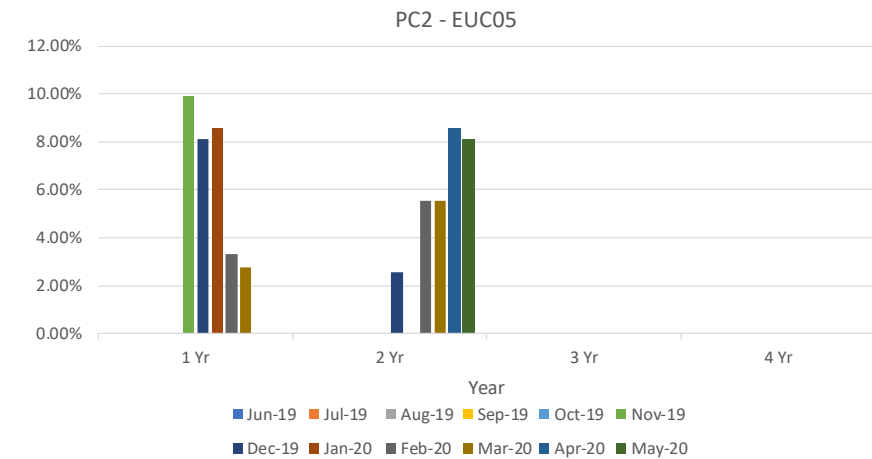
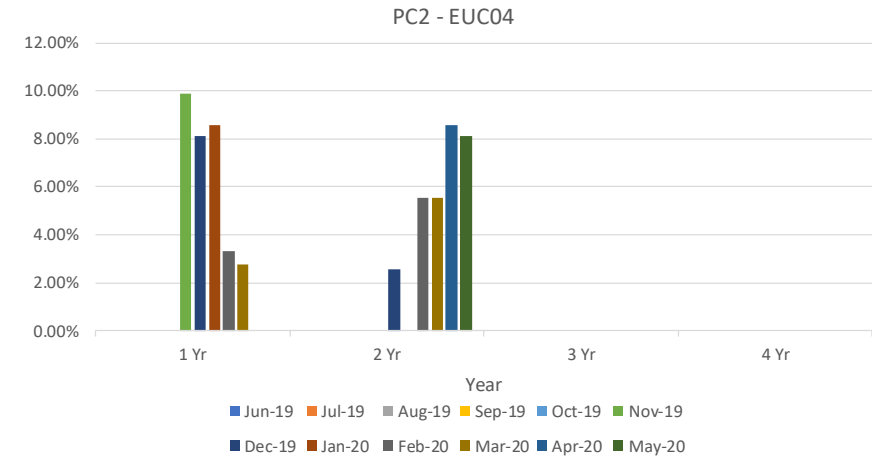
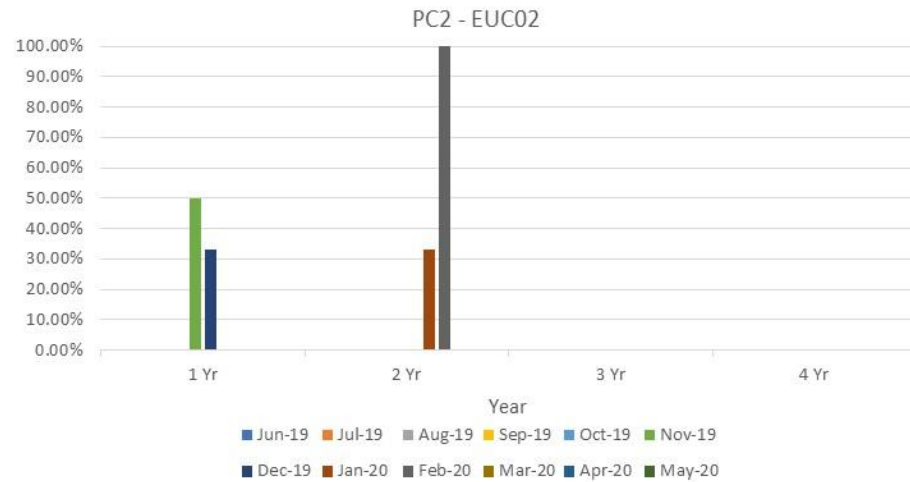
Report measures the percentage of Shipper portfolio in the specified AQ band without a meter reading for the specified period.



# 2A.7 No Reads Received for 1, 2, 3 or 4 years – Product Class 1

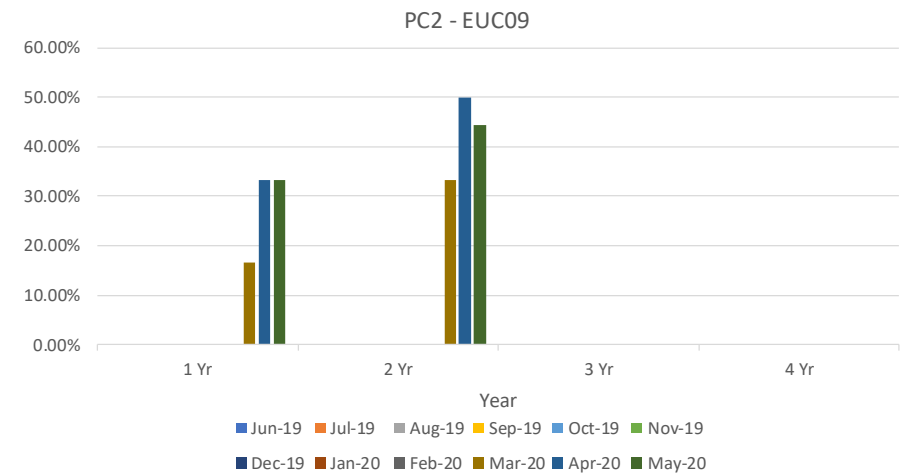
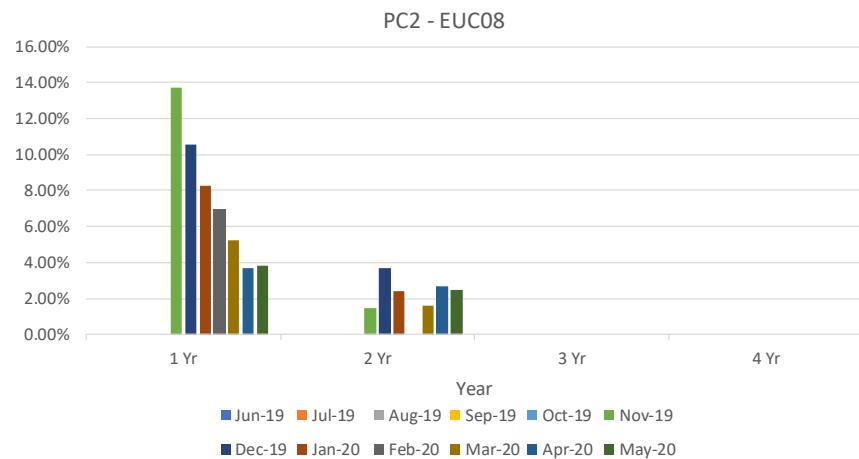
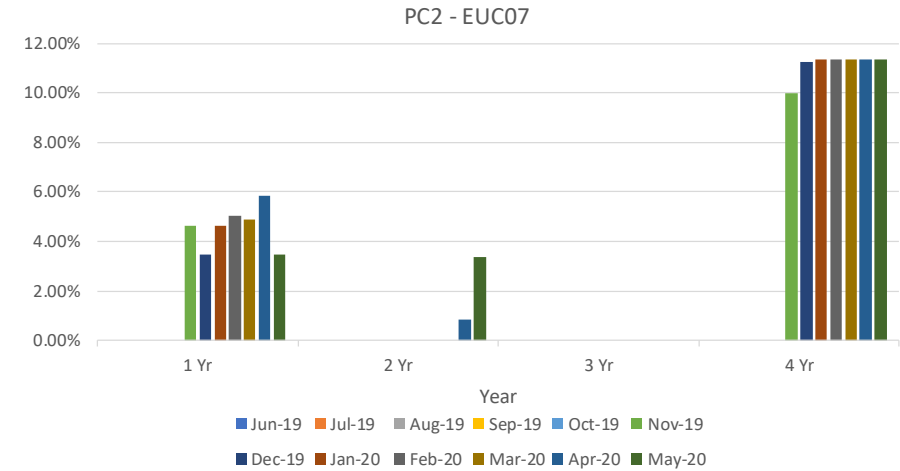
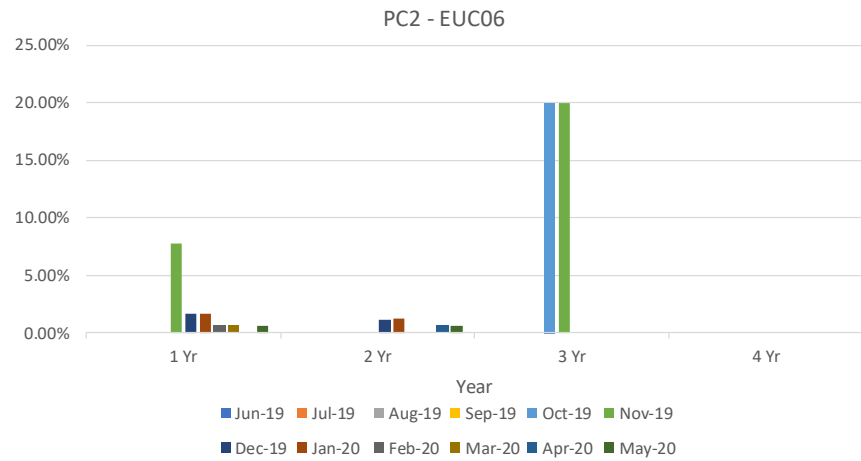


# 2A.7 No Reads Received for 1, 2, 3 or 4 years – Product Class 2

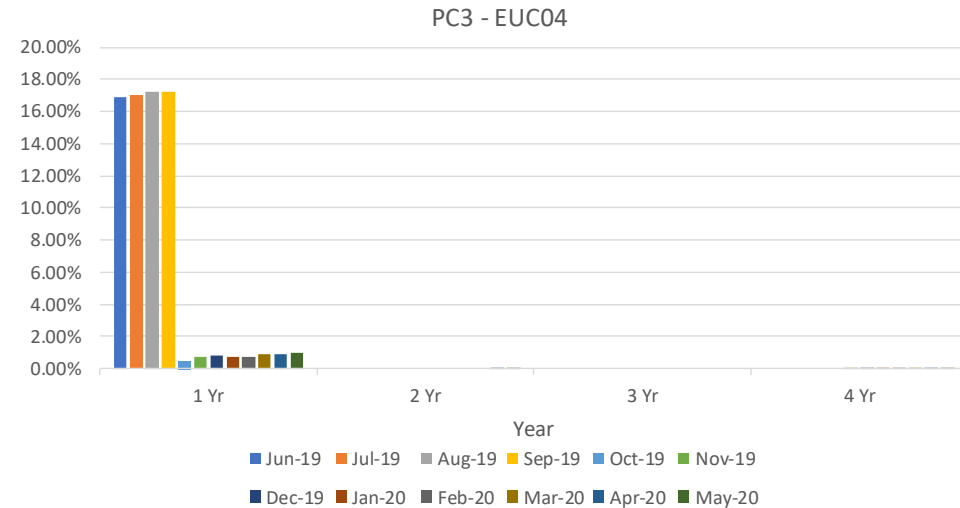
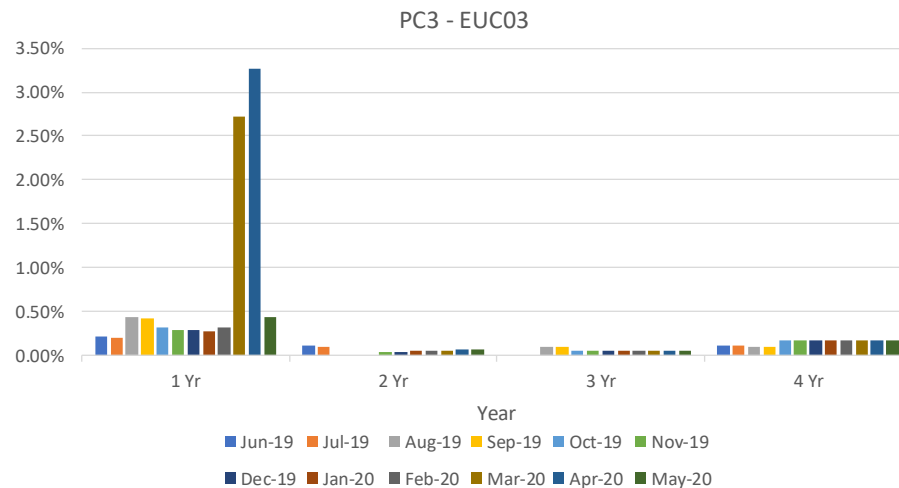
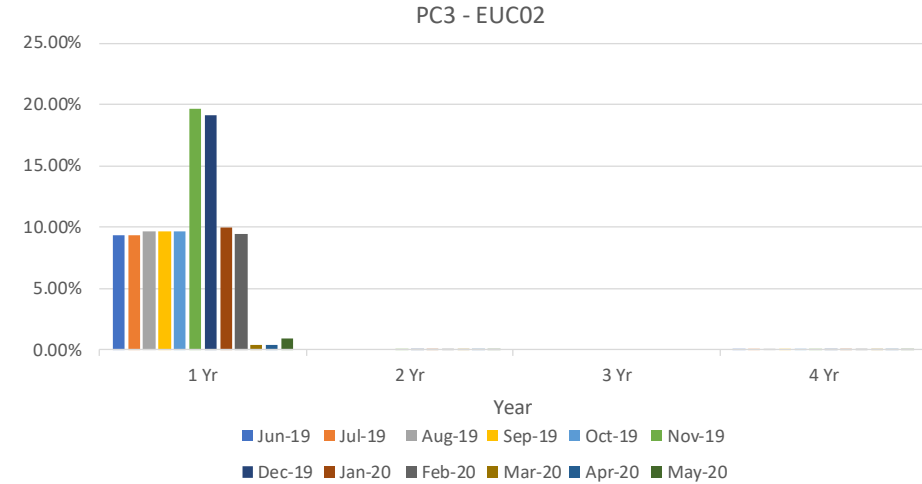
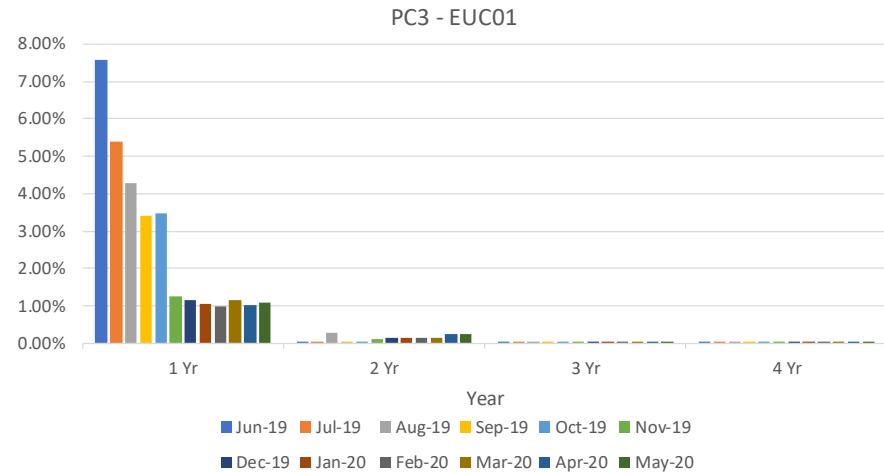




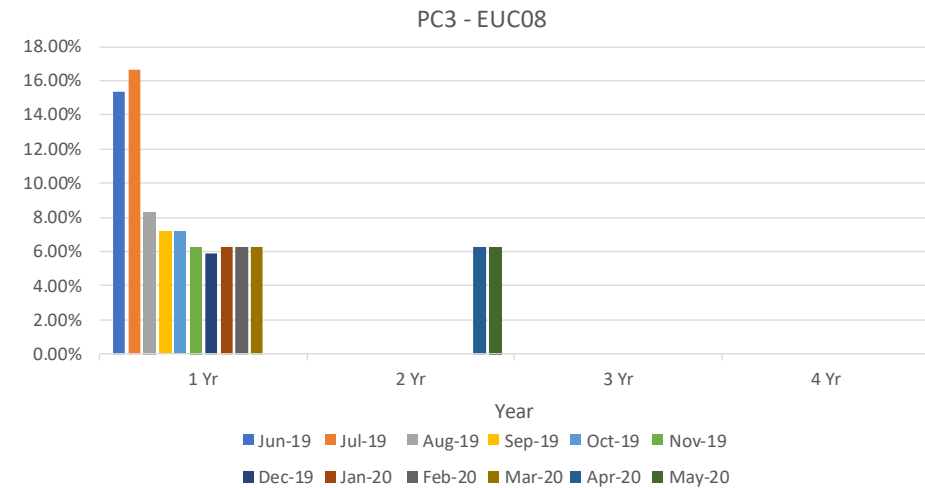
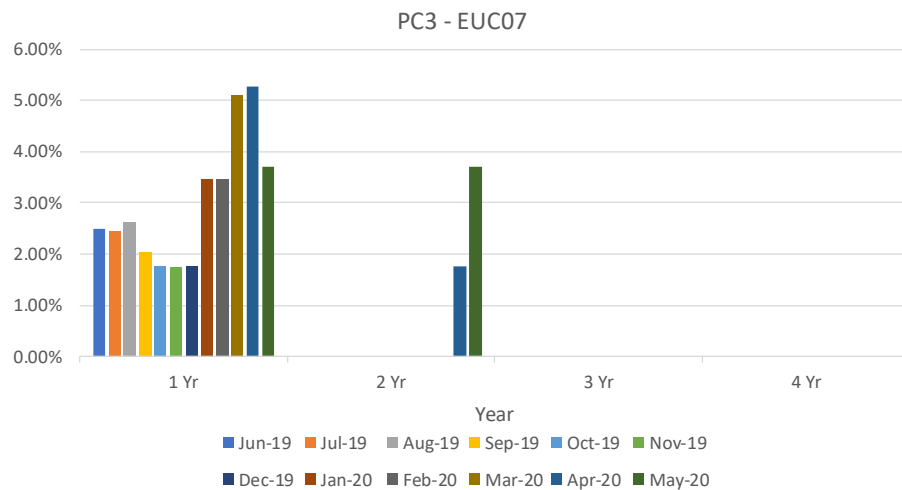
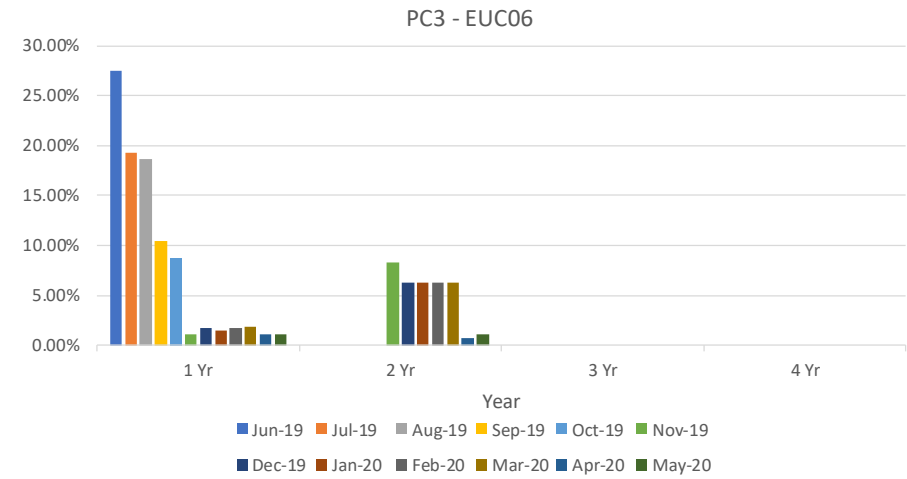
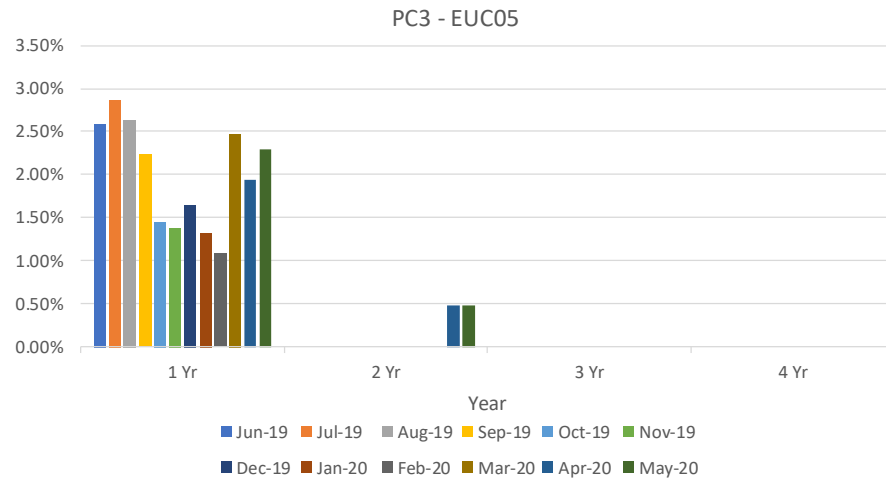
# 2A.7 No Reads Received for 1, 2, 3 or 4 years – Product Class 2



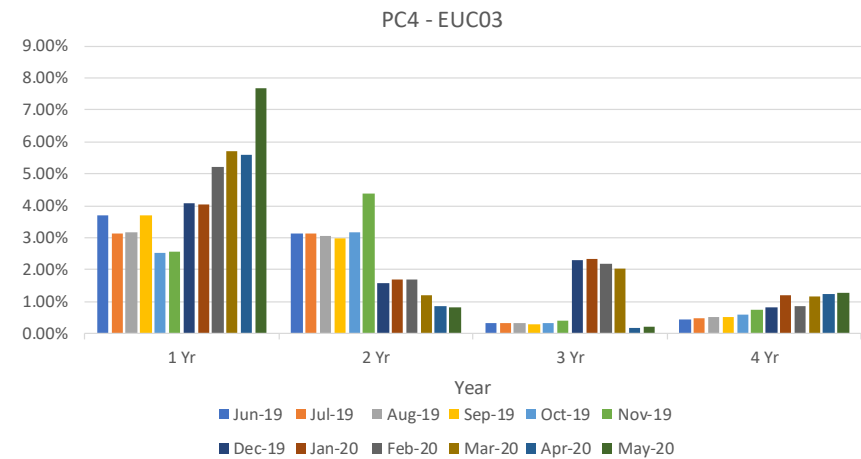
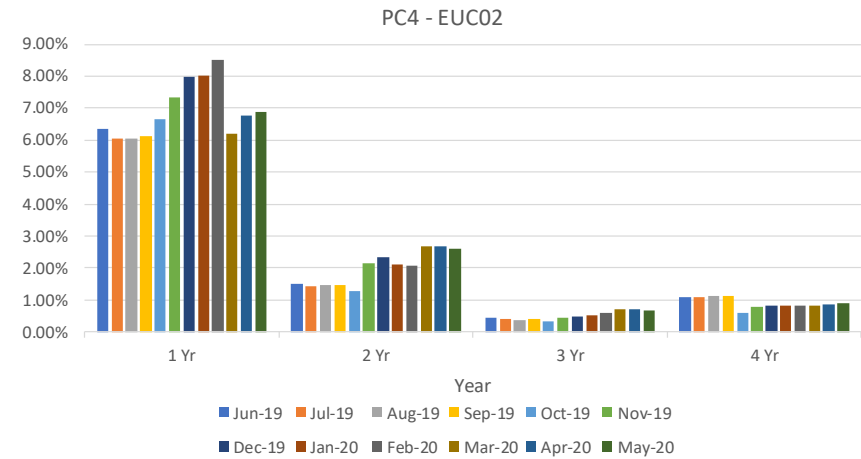
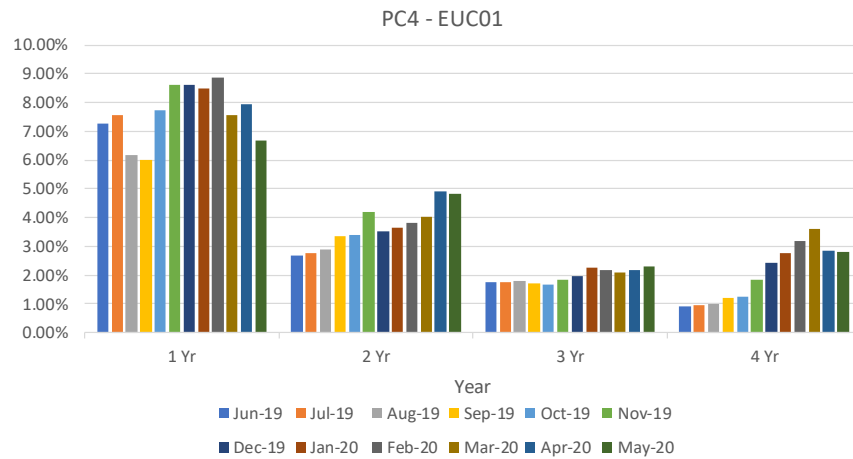
# 2A.7 No Reads Received for 1, 2, 3 or 4 years – Product Class 3



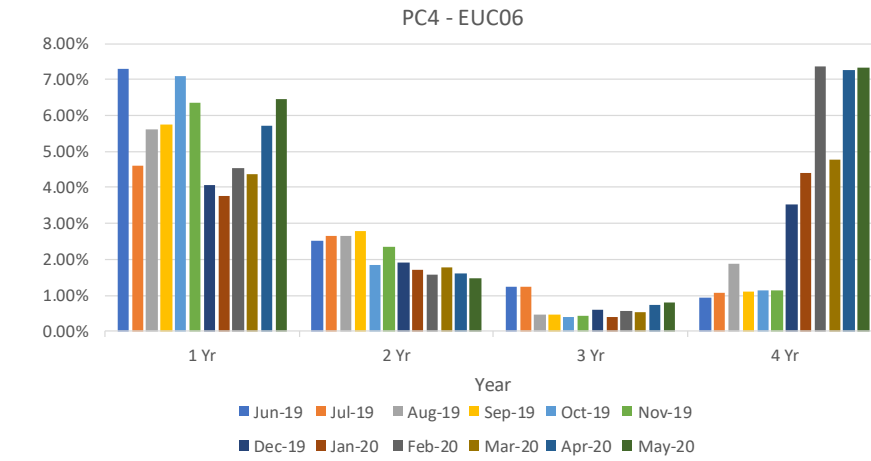
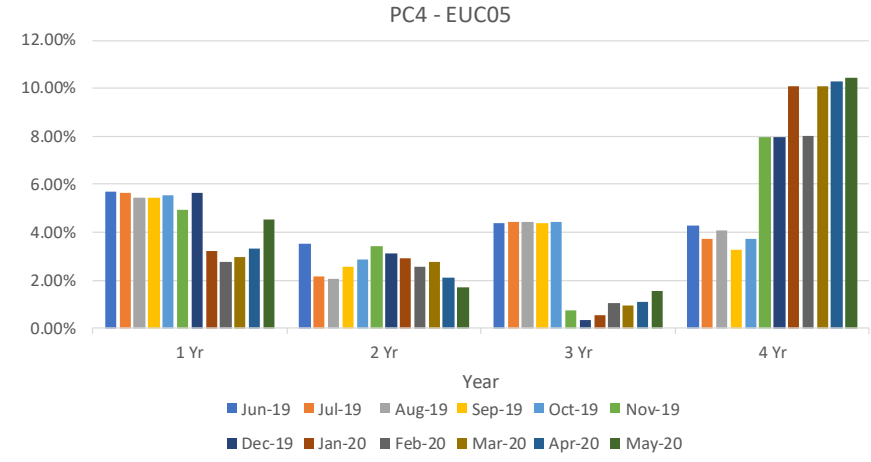
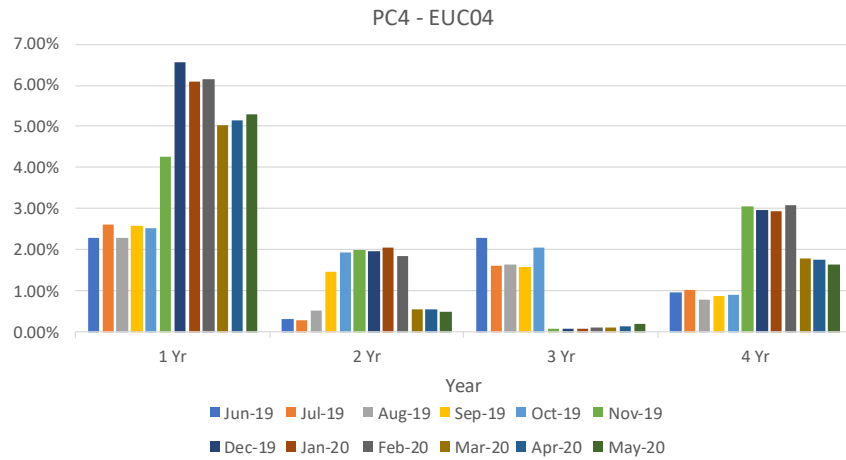
# 2A.7 No Reads Received for 1, 2, 3 or 4 years – Product Class 3



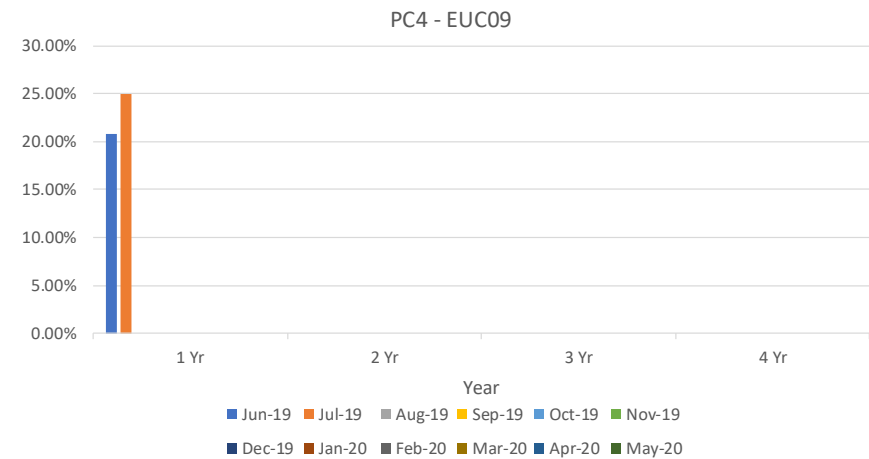
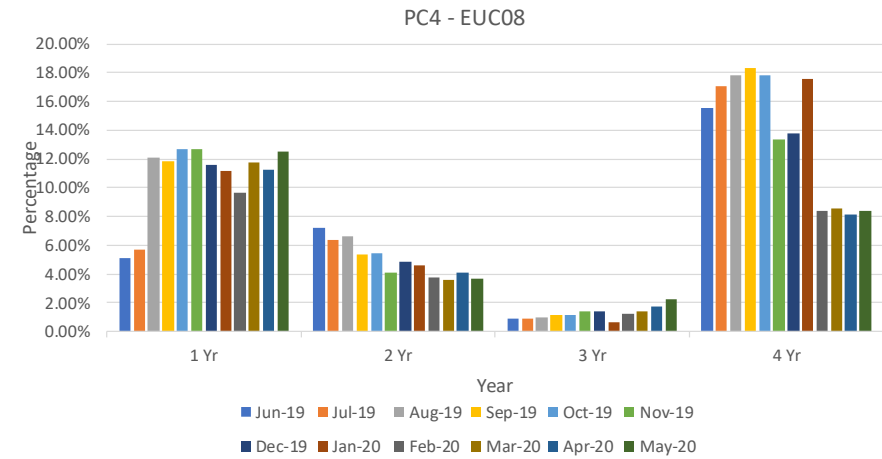
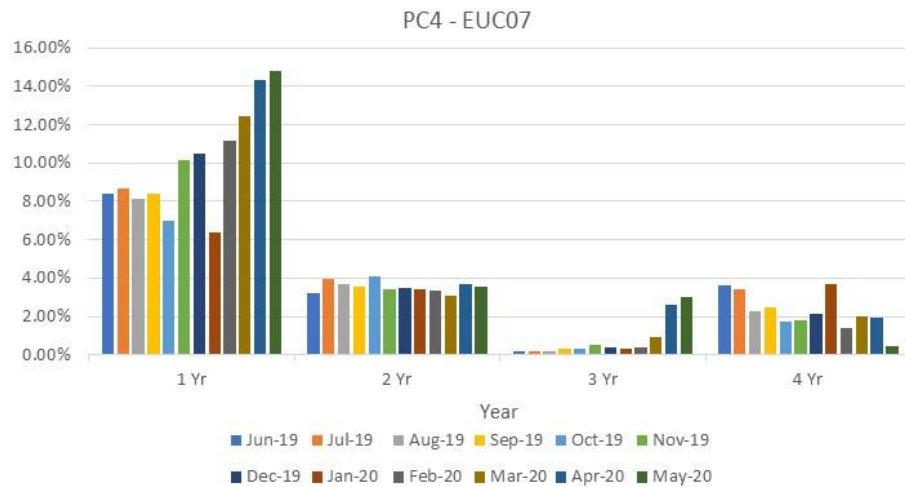
# 2A.7 No Reads Received for 1, 2, 3 or 4 years – Product Class 4



# 2A.7 No Reads Received for 1, 2, 3 or 4 years – Product Class 4



# 2A.7 No Reads Received for 1, 2, 3 or 4 years – Product Class 4



# 2A.8 AQ Correction by Reason Code

Report measures the count of Shipper Portfolio of MPRNs where AQ Correction process Used

Changes in total number of AQ corrections used

**Reason Code 01- Confirmed Theft**

↓ 1 Monthly Change  
↓ 11 Annual Change

**Reason Code 02- Change in Consumer Plant**

↓ 12988 Monthly Change  
↑ 1209 Annual Change

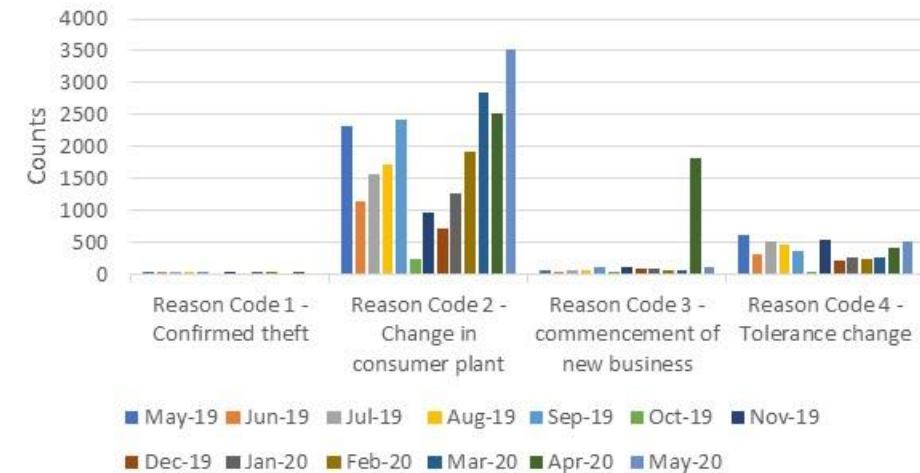
**Reason Code 03- Commencement of New Business**

↑ 32705 Monthly Change  
↑ 34457 Annual Change

**Reason Code 04- Tolerance Change**

↑ 116 Monthly Change  
↑ 98 Annual Change

2A.8 Count of AQ Corrections used by reason code



**Observations:**

- Change in consumer plants continues to account for the highest proportion of AQ corrections.
- Change in consumer plant spiked in December 2019 & April 2020 due to individual Shipper performance (excluded from graph) – working with CAM on resolution
- Increase in AQ corrections under “commencement of new business” which was due to a new Shipper in the market utilising the code.

# 2A.9 Standard CF AQ > 732,000 kWh

Report measures the count of sites with an AQ>732,000 kWh, but having a standard correct factor

## EUC04

↑ 6 Monthly Change  
 ↓ 719 Annual Change

## EUC05

↓ 7 Monthly Change  
 ↓ 136 Annual Change

## EUC06

↑ 1 Monthly Change  
 ↓ 25 Annual Change

## EUC07

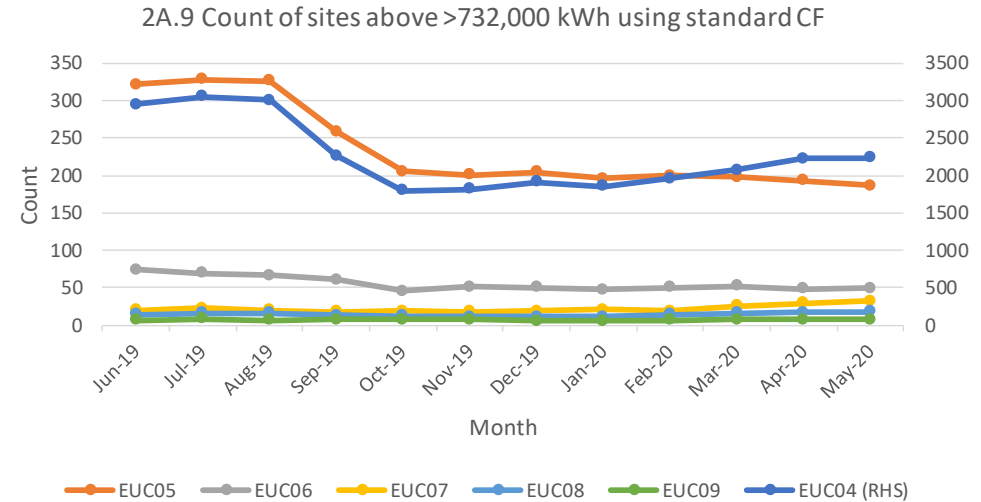
↑ 3 Monthly Change  
 ↑ 12 Annual Change

## EUC08

↑ 1 Monthly Change  
 ↑ 4 Annual Change

## EUC09

No Monthly Change  
 ↑ 1 Annual Change



### Observations:

- EUC04 continues to have a significantly higher number of standard correction factors used compared to other EUC bands.
- The use of standard correction factors has decreased significantly since October 2018, which appears to be on an upward trend due to Shipper specific behaviour – working with CAMs in this area



# 2A.10 Replaced Meter Reads

Report measures the count of meter reading replacements which results in reconciliation adjustments.

## EUC01

↓ 130778 Monthly Change  
 ↑ 131023 Annual Change

## EUC02

↑ 39 Monthly Change  
 ↓ 550 Annual Change

## EUC03

↓ 71 Monthly Change  
 ↓ 219 Annual Change

## EUC04

↓ 247 Monthly Change  
 ↓ 183 Annual Change

## EUC09

No data recorded

## EUC05

↓ 3 Monthly Change  
 ↓ 33 Annual Change

## EUC06

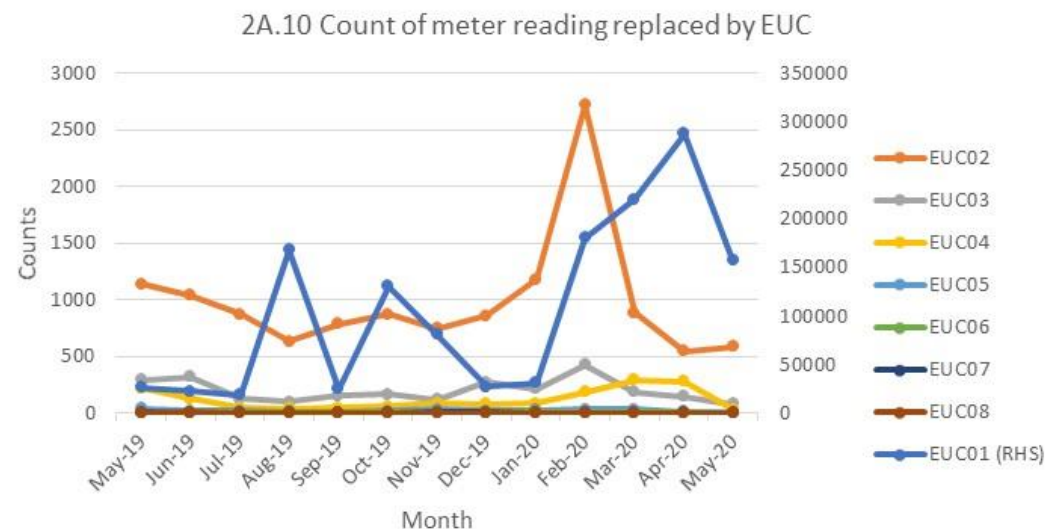
↓ 5 Monthly Change  
 No Annual Change

## EUC07

↑ 1 Monthly Change  
 ↓ 4 Annual Change

## EUC08

↓ 3 Monthly Change  
 ↓ 3 Annual Change



### Observations:

- EUC01 has seen the most volatility in replaced meter reads since August 2019. This has been driven by individual Shipper behaviour
- In general, the spikes are due to Shipper's cleansing their portfolio.

# Appendix – PARR report details



Sr No	Topic	Details	Split By	12 Rolling Months	Format	e.g. For Nov Report	Condition	Comments
1	2A - Estimated & Check Reads used for Gas Allocation, and consumption adjustments for Product Classes 1 & 2	<p>Need to count everyday portfolio and count mprn where read has been estimated and no actual present on the same day .</p> <p>Check Read : For check reads we would need to check , as of reporting day how many class 1 &amp; 2 MPRNs are present with DRE/AMR.</p> <p>For those MPRNs we have site visit read &lt;=14 months and no subsequent site visit read . Those are outstanding ones per shipper.</p>	Class	Annual	Percentage	September	M-2	
2	2A - No Meter Recorded in the Supply Point Register	AQ Band wise , AQ band based on report run day . Class wise different table And AQ Band. Exclude NTS connected Sites & Telemeterd. Exiting SHPK - Topic - Confirmed No Asset Report	Class	Annual	Count & B - Percentage	Nov	M	
3	No Meter Recorded in the Supply Point Register and data flows received by Xoserve	Same as above but additionally need to check if for above MPRNs any Data Flow Means - > Asset Update , C & D Store & Reads received in that month	Class	Annual	Count & B - Percentage	Additional MPRNs		
4	2A - Shipper Transfer Read Performance	M-2 is considered – Open OPNT_REQ_FOLL_CON OPNT_RECEIVED_10	Class	Annual	Percentage	September	M-2	
5	Read Performance	As per frequency we need to check if we have received the read e.g. month read site will check if we have received the read in month .Class and shipper transfer are excluded .6 Monthly read site need to consider yearly ,it is not in UNC. It will be like MUR logic M-2 , exclude sites where class changes happened in M-2 , shipper changes	Class		Percentage	September	M-2	

# Appendix – PARR report details



Sr No	Topic	Details	Split By	12 Rolling Months	Format	e.g. For Nov Report	Condition	Comments
6	2A - Meter Read Validity Monitoring	<p>MRE01026 :Reading breached the lower Outer tolerance.                      MRE01027 :Reading breached the Upper Outer tolerance.                      MRE01028 :Reading breached the lower Inner tolerance value and no override flag provided.                      MRE01029 :Reading breached the upper Inner tolerance value and no override flag provided.                      MRE01030 :Override tolerance passed and override flag provided</p> <p>We can build this from DUK_ARSR , by checking failed reads . DUK_READ = We can get how many successfull reads received based on Status =U . Failed once are with status =F</p>	Reason Codes		Percentage	October	M-1	
7	No reads received for 1,2,3 or 4 years ( excludeds estimated	<p>Per class table , per AQ Band ,Need to ignore estimates for all classed Logic is similar to existing SHPK Logic - NO_READ_2Y_3Y_B73200                      Here we would need to create 4 counts No reads received for 1 , 2 , 3 , 4 years sepeartely as per layout</p>	AQ Band	Annual	Percentage	Nov	M	
8	2A - AQ Corrections	<p>AQ correction by reason code :                      Switch Type = 50 , Switch View = 50 , Switch status = LI                      Reason code per table , Reason code is new field added in ISU BW - DS                      OUC_SWTDOC Switch Document new field added in DS - ZZ_AQ_REASON</p>	AQ Band	Annual	count	October	M-1	
9	2A - Standard Correction Factors for sites with AQ > 732, MWH	<p>Standard correction factor by AQ Band                      Count of meter points where replacement reads received by AQ Band ,only for class 3&amp; 4 ,</p>	AQ Band	Annual		Nov	M	Report should only include AQs above 732000. Currently including >=732000
10	2A - Replaced Meter Reads	<p>Replaced meter reads are identified with DUK_READ where read reason = R , Upload Status = U , we would need to add AQ Band either in DUK_READ or consider while processing</p>	AQ Band	Annual		October	M-1	

PAFA@Gemserv.com

