



## **Demand Estimation Sub Committee**

**COVID-19 Winter Impacts – Gas Year 2020/21**

**7<sup>th</sup> December 2020**

# Overview

## Background:

- Analysis presented in Strand 3 of NDM Algorithm Performance for Gas Year 2019/20 confirmed there were no COVID impacts for the Domestic EUC "01BND"
- However, as we start Gas Year 2021/22 and enter the main heating period, we would like to monitor the impacts of COVID-19 on the Domestic EUC

## Objective:

- To review the consumption trends for the Domestic EUC Bands to see if there are any noticeable changes in behaviour trends post COVID

## Analysis:

- Compare domestic consumption data during COVID and Non-COVID lockdown periods
- Xoserve sample data will be used in the assessment

## Note:

- National lockdown started just as we were coming into the Spring/Summer period
- Different LDZs will have different restrictions during different periods

Gas Year 2019/20

Gas Year 2020/21

Gas Year 2021/22

# COVID-19 - Domestic Analysis

Analysis Period (observation): 01/10/2019-15/11/2020

- Before lockdown: 01/10/2019-22/03/2020
- Lockdown 1: 23/03/2020-14/05/2020
- Local Lockdowns: 15/05/2020-04/11/2020
- Lockdown 2: 05/11/2020-02/12/2020 (Data illustrated is to 15/11/2020)

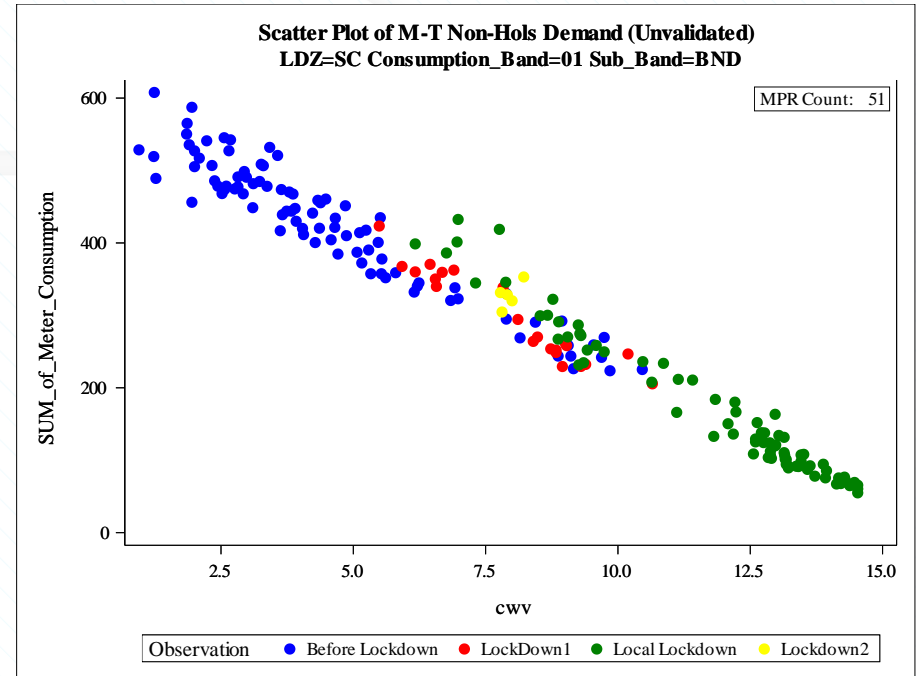
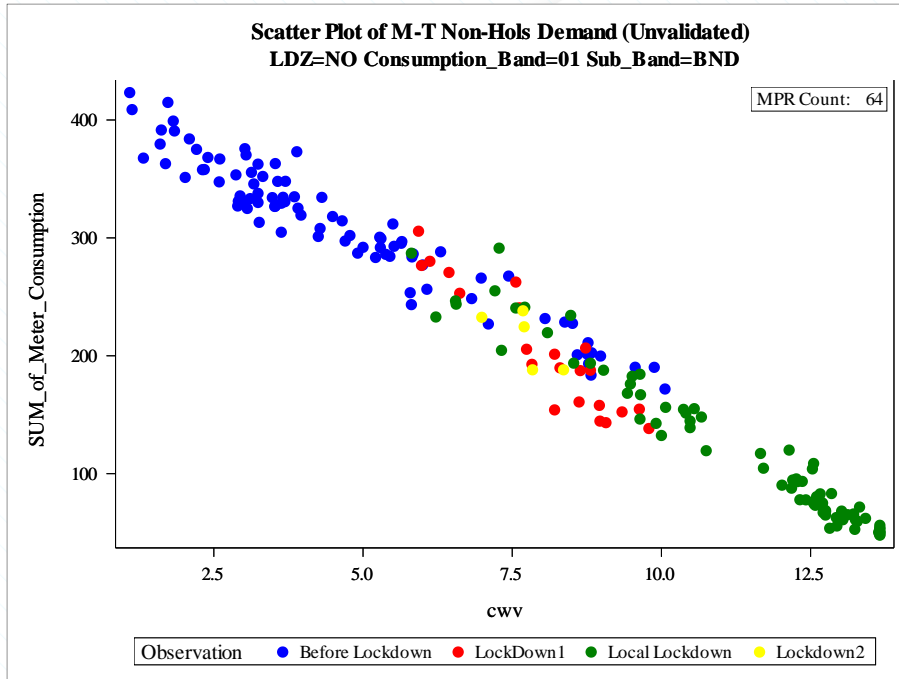
Data used in the analysis:

- Unvalidated Consumption from Domestic Supply Points in Xoserve Managed Sample (590 sites)
- Meter Consumption is measured in metric (SCMH)
- The CWV – using latest version

Charts:

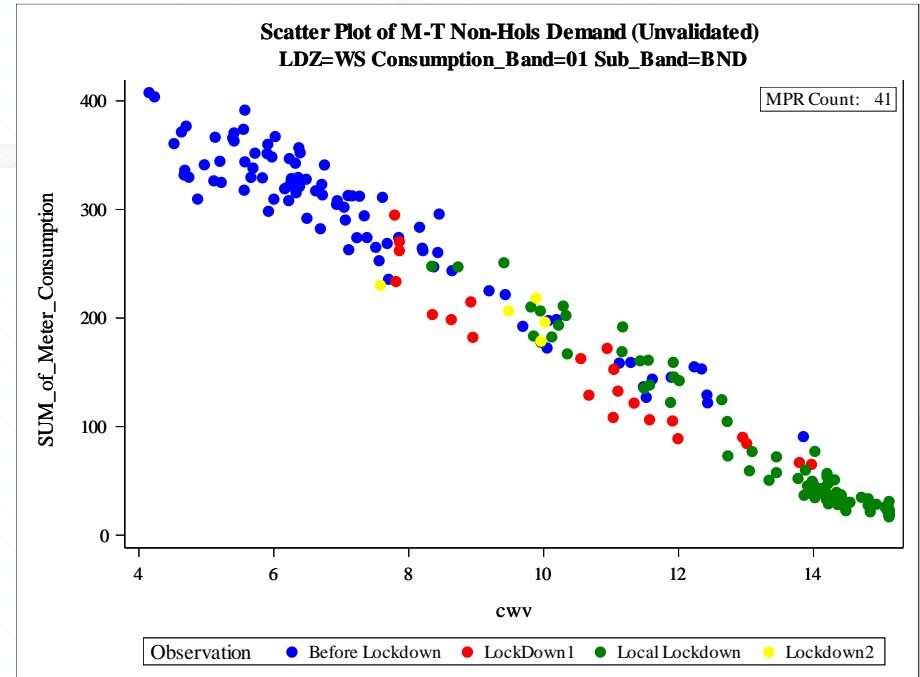
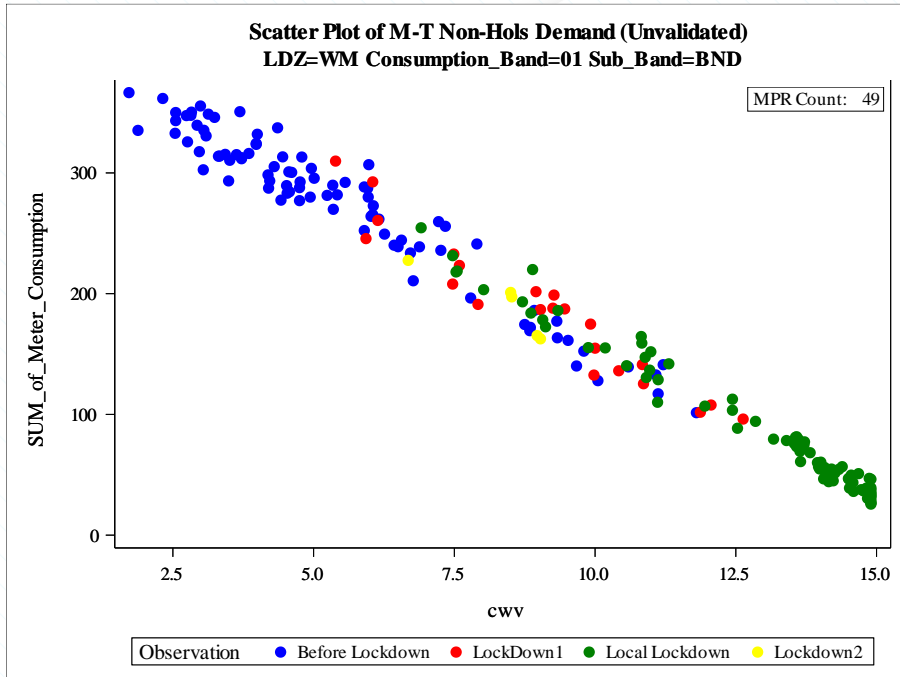
- 4 LDZs have been selected for the presentation
- These are to provide a visual of the consumption trends for domestic sites and highlight any potential COVID impacts

# CWV vs Domestic Consumption (unvalidated)



- No obvious COVID impacts observed in Domestic consumption levels for these LDZs

# CWV vs Domestic Consumption (unvalidated)



- No obvious COVID impacts observed in Domestic consumption levels for these LDZs

# Conclusions

- The results do not indicate any kind of 'step change' in Domestic consumption as a result of COVID-19
  - 4 LDZs shown is typical of the results for remaining LDZs
- The analysis period only goes up to mid November and so the full heating period is still to come
- We do not know how many of the Domestic sites in the Xoserve managed sample contain 'Home-Workers'
- We shall continue to monitor our sample in anticipation of questions on this subject over the winter period

# Questions to DESC

- Do DESC members have any insight/views from your data which indicates any changes in Domestic consumption levels?
- Are you expecting AQs to continue to rise for the Domestic EUC ?
- If you observe any change in Domestic consumption behaviour during the winter please share any insight with Xoserve