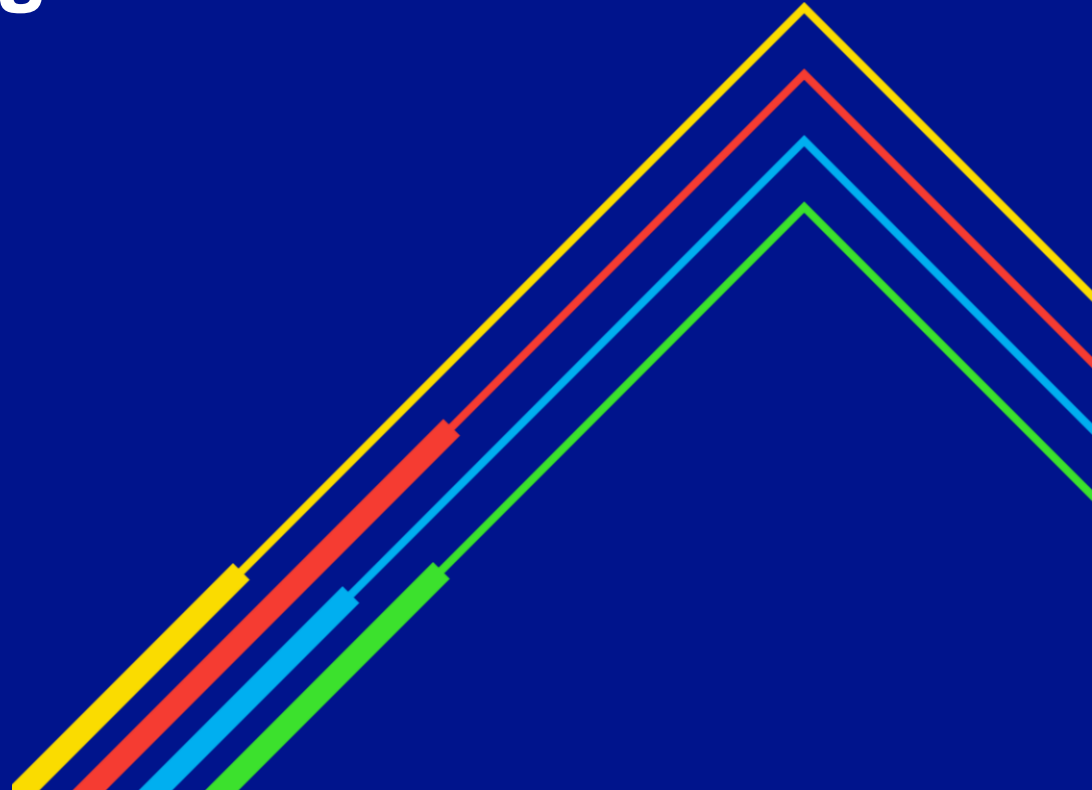


# Overruns Reporting

Transmission Workgroup  
4<sup>th</sup> August 2022

national**grid**



# Impact of new UNC Modifications

ENTRY				
Auction 0H:00	May-21	May-22	Jun-21	Jun-22
06	58	21	15	15
07	2	9	2	15
08	27	29	19	29
09	36	42	31	31
10	26	15	27	11
11	16	29	2	14
12	60	35	12	45
13	28	31	15	20
14	30	26	24	17
15	25	22	26	32
16	7	26	15	34
17	44	45	23	66
18	166	197	98	130
19	44	90	28	85
20	82	77	73	73
21	110	98	84	112
22	119	250	101	149
23	111	172	94	158
00	557	690	471	600
01	471	571	379	462
02		41		43
Sum	2019	2516	1539	2141

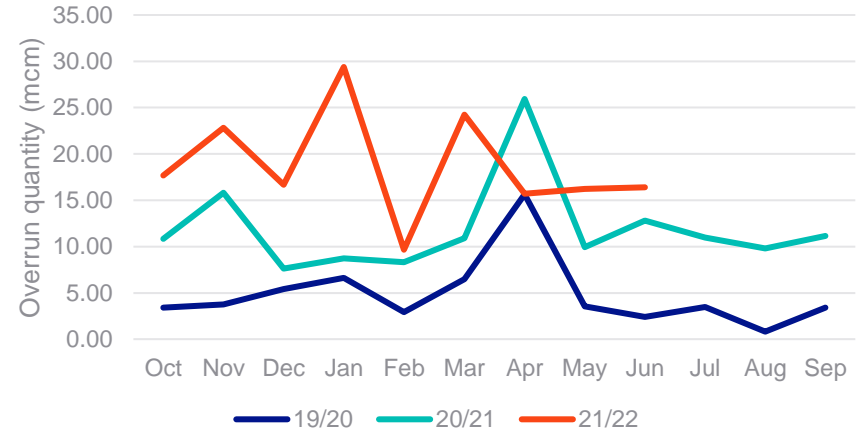
EXIT				
Auction 0H:00	May-21	May-22	Jun-21	Jun-22
06		36		38
07		2		0
08	22	1	31	5
09		2		14
10		10		8
11		18		12
12		18		37
13		32		43
14	125	24	126	23
15		13		25
16		9		20
17		44		36
18	110	36	107	61
19	14	20		34
20		48		52
21		60		63
22	191	78	209	82
23	16	111		117
00		277		270
01	385	95	397	104
02		90		69
SUM	863	1024	870	1113

On 24<sup>th</sup> April 3 capacity related modifications were implemented. Utilisation summary – May/June 2022:

- 0752S – Introduction of Weekly Entry Capacity Auctions (2 bids received to date)
- 0755S – Enhancement of Exit Capacity Assignments (not utilised)
- 0759S – Enhancement to NTS Within-Day Firm Entry and Exit Capacity Allocations
  - Entry: 84 bids received in 2am auction (0.73% of overall within-day booking quantity)
  - Exit: 159 bids received in 2am auction (5% of overall within-day booking quantity), more even spread of bookings throughout the day

ENTRY	No of Overruns			Charge Quantity (mcm)			Charge Amount (£)		
	21/22	20/21	19/20	21/22	20/21	19/20	21/22	20/21	19/20
Oct	541	319	129	17.66	10.84	3.40	540,668	270,470	34,374
largest (3)	User A			0.97			29,646		
	User A			0.76			23,255		
	User B			0.67			20,637		
Nov	569	369	98	22.82	15.83	3.77	697,866	442,615	10,750
largest (3)	User A			0.89			27,320		
	User B			0.93			28,507		
	User C			0.79			24,316		
Dec	514	403	123	14.68	7.63	5.41	412,650	180,741	35,823
largest (3)	User A			0.62			19,010		
	User D			0.48			14,682		
	User E			1.65			14,237		
Jan	537	379	200	29.38	8.73	6.64	898,500	203,890	69,319
largest (3)	User F			8.53			261,054		
	User F			5.88			179,950		
	User G			0.79			24,157		
Feb	462	410	117	9.67	8.31	2.93	295,747	196,899	30,808
largest (3)	User H			0.47			14,396		
	User B			0.25			7,678		
	User A			0.25			7,584		
Mar	551	500	160	24.23	10.90	6.48	741,111	273,013	82,351
largest (3)	User A			10.59			323,852		
	User I			2.06			63,126		
	User J			0.80			24,335		
Apr	715	565	146	15.71	25.93	15.64	480,534	606,194	57,608
largest (3)	User K			0.66			20,091		
	User K			0.59			17,977		
	User L			0.56			17,058		
May	663	551	141	16.23	9.93	3.55	496,366	227,449	36,475
largest (3)	User J			2.88			88,009		
	User C			0.56			17,078		
	User B			0.54			16,428		
Jun*	557	405	132	16.39	12.82	2.43	508,638	303,337	26,130
largest (3)	User M			0.47			14,296		
	User N			0.46			13,938		
	User O			0.44			13,328		
<b>Total</b>	<b>5,109</b>	<b>3,901</b>	<b>1,246</b>	<b>166.76</b>	<b>110.91</b>	<b>50.25</b>	<b>5,072,080</b>	<b>2,704,608</b>	<b>383,637</b>

Entry Overruns - Yearly comparison



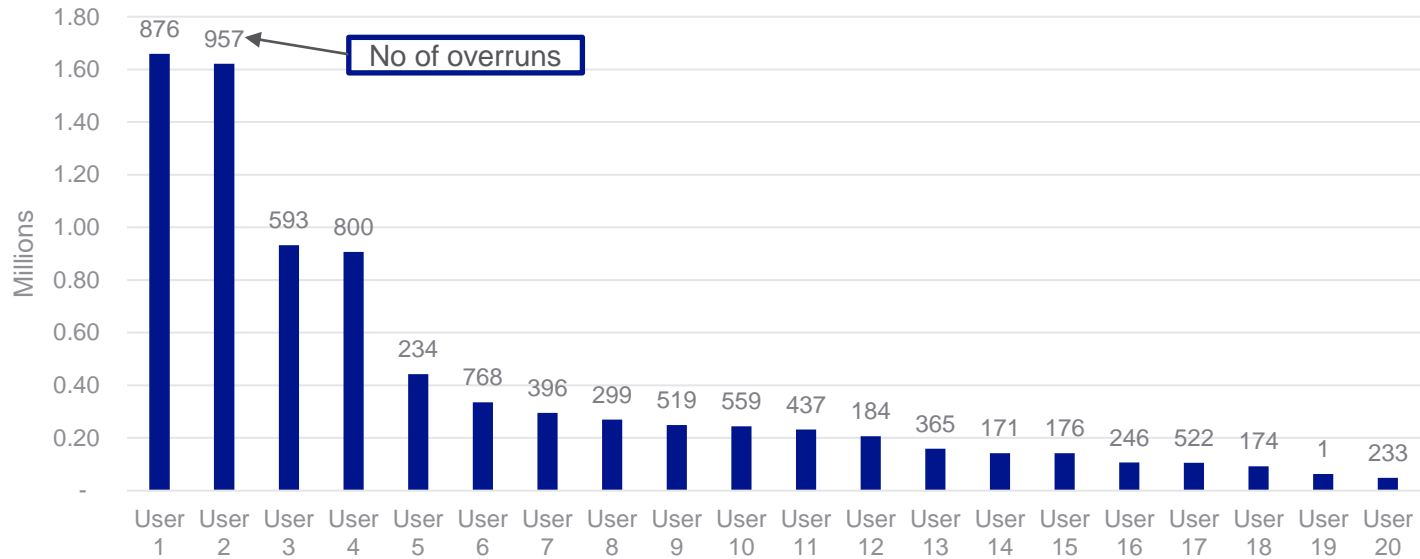
Oct 2020 – Jun 2022

Entry point type	Overrun charges incurred (£)	Charge quantity (mcm)	% of total
Beach	7,517,300.18	273.33	88.3
IP	99,463.73	3.95	1.3
LNG	852,228.44	27.96	9.0
Storage	35,632.95	3.47	1.1
Onshore Field	28,517.34	0.93	0.3

\*June data not closed out

# Entry Overruns

Breakdown per User (Oct 2020 – Jun 2022)

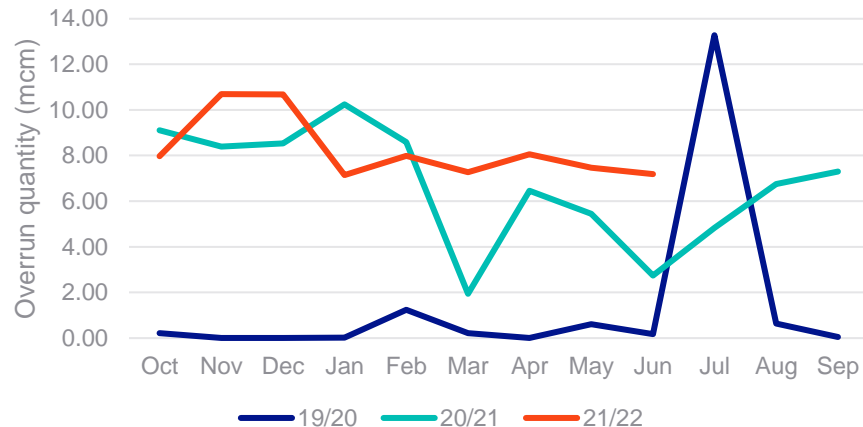


# Entry capacity booked v Overruns

% over capacity bookings	No of Overruns	Quantity mcm	Charges	% of total	% of total (May-Jun 22 only)
0-1%	4089	37.92	1,042,508	17.34	26.10
1-3%	1030	35.97	970,417	16.15	27.68
3-4%	207	12.39	313,314	5.21	5.78
4-5%	153	9.33	247,498	4.12	2.21
5-10%	347	21.38	559,337	9.31	10.00
10-50%	445	45.88	1,177,190	19.58	20.67
50%+	105	46.84	1,245,966	20.73	4.77
No capacity booked	973	10.41	239,599	3.99	2.79
Negative overrun	89	7.28	214,914	3.58	0
<b>Total (Oct 2020-Jan2022)</b>	<b>7,438</b>	<b>227.41</b>	<b>6,010,746</b>	<b>100</b>	<b>100</b>

EXIT	No of Overruns			Charge Quantity (mcm)			Charge Amount (£)		
	21/22	20/21	19/20	21/22	20/21	19/20	21/22	20/21	19/20
Oct	174	137	1	7.97	9.11	0.21	104,048	111,795	2,875
largest (3)	User A			1.24		0.00	17,301		
	User B			1.04		0.00	14,489		
	User C			0.57			7,979	38	
Nov	235	536	0	10.69	8.40	0	138,166	102,317	
largest (3)	User D			0.79			11,030		
	User E			0.69			9,655		
	User E			0.63			8,733	21	
Dec	190	398	0	10.67	8.53	0	125,350	96,008	
largest (3)	User F			2.09			29,052		
	User C			1.33			18,512		
	User E			0.47			6,541		
Jan	201	142	2	7.15	10.25	0.02	85,106	131,627	1
largest (3)	User D			0.76			10,526		
	User B			0.42			5,836		
	User G			0.25			3,489		
Feb	181	166	8	7.98	8.59	1.24	83,295	92,832	8,746
largest (3)	User B			0.95			13,265		
	User E			0.42			5,800		
	User E			0.39			5,423		
Mar	167	144	5	7.27	1.94	0.22	88,724	23,634	20
largest (3)	User B			0.73			10,114		
	User H			0.68			9,418		
	User B			0.65			9,101		
Apr	178	218	0	8.05	6.45	0.00	98,871	78,019	57,608
largest (3)	User H			0.30			31,388		
	User B			0.46			6,443		
	User A			0.41			5,662		
May	187	179	2	7.47	5.45	0.61	1,272,587	66,865	36,475
largest (3)	User H			0.12			201,611		
	User H			0.11			191,836		
	User H			0.11			182,015		
Jun*	155	121	7	7.18	2.74	0.18	55,498	35,604	26,130
largest (3)	User F			3.32			9,210		
	User A			0.59			8,260		
	User G			0.35			4,909		
<b>Total</b>	<b>1,668</b>	<b>2,041</b>	<b>25</b>	<b>74</b>	<b>61</b>	<b>2</b>	<b>2,051,645</b>	<b>738,700</b>	<b>131,854</b>

## Exit Overruns - Yearly comparison

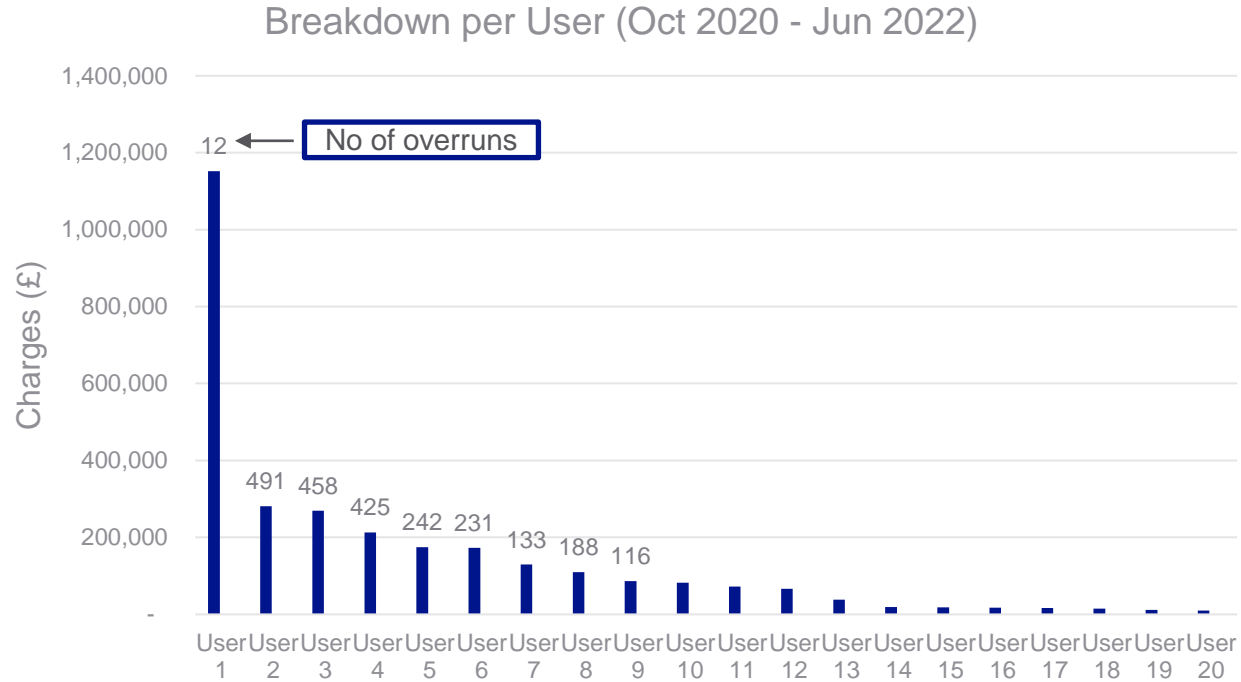


## Oct 2020 – Jun 2022

Exit point type	Overrun charges incurred (£)	Charge quantity (mcm)	% of total charges	% of total charge quantity
IP	1,313,881.96	7.46	44.0	4.9
Storage	151,065.95	32.49	5.1	21.3
Industrial	213,590.07	15.99	7.2	10.5
Power Station	1,307,411.57	96.68	43.8	63.3

\*June data not closed out

# Exit OVERRUNS



# Exit capacity booked v Overruns

No of Overruns	Overrun Quantity (mcm)	Overrun charge (£)	Sum of Overrun charge (£)	% of total	% of total (May-Jun 22 only)
1314	0.24	0.01-100.00	28,727.05	2	0.2
730	14.26	101.00-500.00	183,986.01	13	1.5
327	17.99	501.00-1,000.00	230,418.40	17	1.9
323	67.43	1,000-10,000	785,829.56	57	6.3
10	12.61	10,000+	158,014.94	11	89.9
TOTAL					TOTAL
2704	112.54		1,386,975.96	100	100



national**grid**