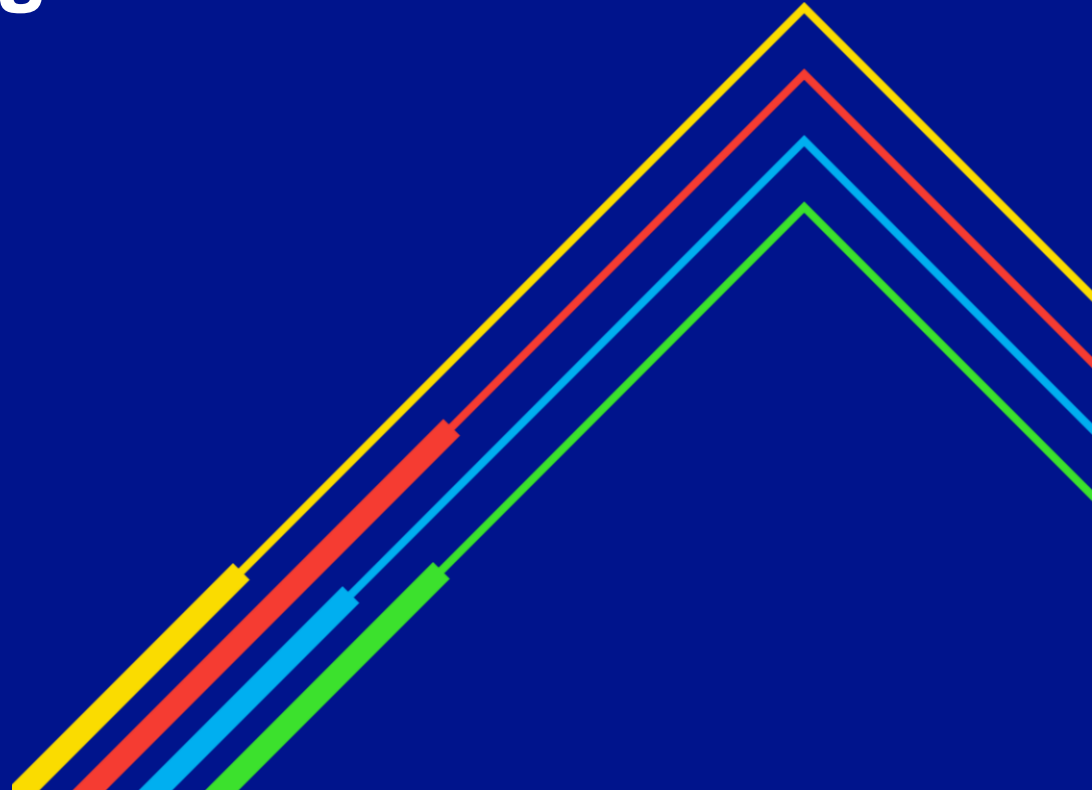


Overruns Reporting

Transmission Workgroup
7th April 2022

national**grid**

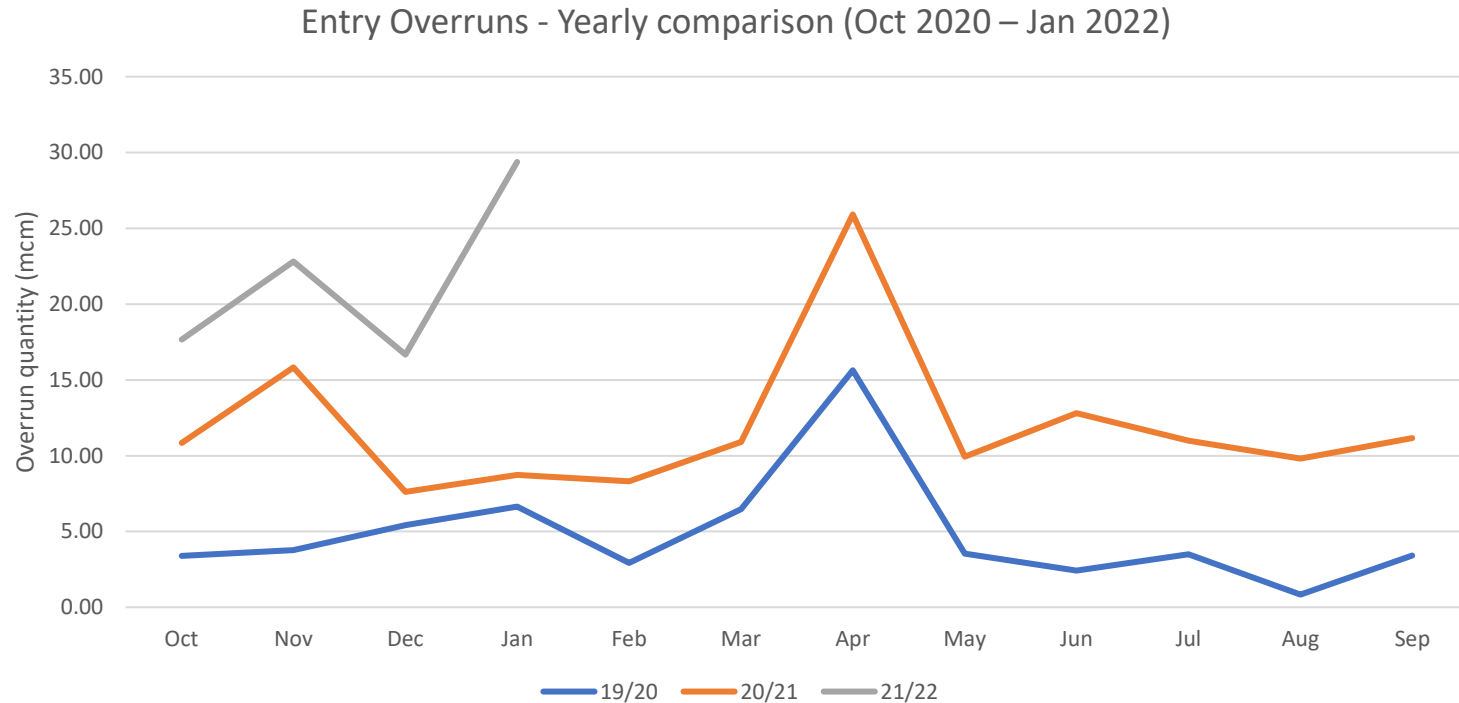


Entry Overruns (Oct 2021 - Jan 2022)

	No of Overruns		Charge Quantity (mcm)		Charge Amount (£)		No of Users		No of ASEPs	
	21/22	20/21	21/22	20/21	21/22	20/21	21/22	20/21	21/22	20/21
Oct	541	319	17.66	10.84	540,668	270,470	30	31	9	9
<i>largest (3)</i>	<i>User A</i>		<i>0.97</i>		<i>29,646</i>					
	<i>User A</i>		<i>0.76</i>		<i>23,255</i>					
	<i>User B</i>		<i>0.67</i>		<i>20,637</i>					
Nov	569	369	22.82	15.83	697,866	442,615	30	25	13	8
<i>largest (3)</i>	<i>User A</i>		<i>0.89</i>		<i>27,320</i>					
	<i>User B</i>		<i>0.93</i>		<i>28,507</i>					
	<i>User C</i>		<i>0.79</i>		<i>24,316</i>					
Dec	514	403	14.68	7.63	412,650	180,741	26	26	11	10
<i>largest (3)</i>	<i>User A</i>				<i>19,010</i>					
	<i>User D</i>				<i>14,682</i>					
	<i>User E</i>				<i>14,237</i>					
Jan*	537	379	29.38	8.73	898,500	203,890	27	23	10	8
<i>largest (3)</i>	<i>User F</i>		<i>8.53</i>		<i>261,053.76</i>					
	<i>User F</i>		<i>5.88</i>		<i>179,949.50</i>					
	<i>User G</i>		<i>0.79</i>		<i>24,156.63</i>					
Total 2021/22 Gas Year	2,161	1,470	84.54	43.02	2,549,684.24	1,097,716.38				
Total (from 1st Oct 2020)	7,438	3,041	227	101	6,010,746	1,566,474				

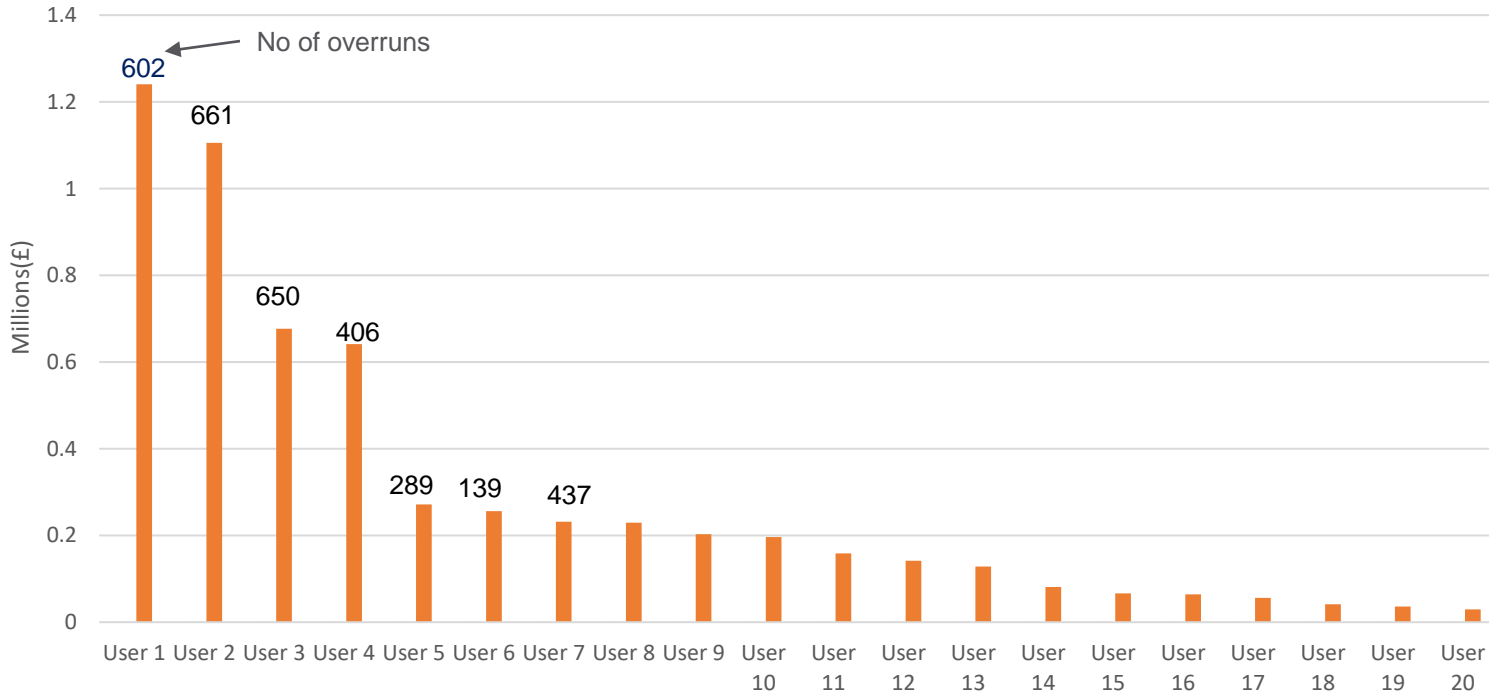
*excluding Adjustments

Entry Overruns



Entry Overruns

Breakdown per User (Oct 2020 – Jan 2022)



Entry Overruns (Oct 2020 – Jan 2022)

Entry point type	Overrun charges (£)	Charge quantity (mcm)	% of total
Beach	5,255,349	199.39	87.7
IP	96,048	3.84	1.7
LNG	602,118	20.02	8.8
Storage	35,610	3.46	1.5
Onshore Field	21,619	0.71	0.3
TOTAL	6,010,746	227.41	100.0

Overruns v Balancing

- Analysis looked at 30 days when the highest Entry Overruns occurred between 1st October 2020 and end of January 2022. Out of 30 days NTS took the following Balancing actions:
 - Buy – 8 Days
 - Sell – 11 Days
 - None – 11 Days

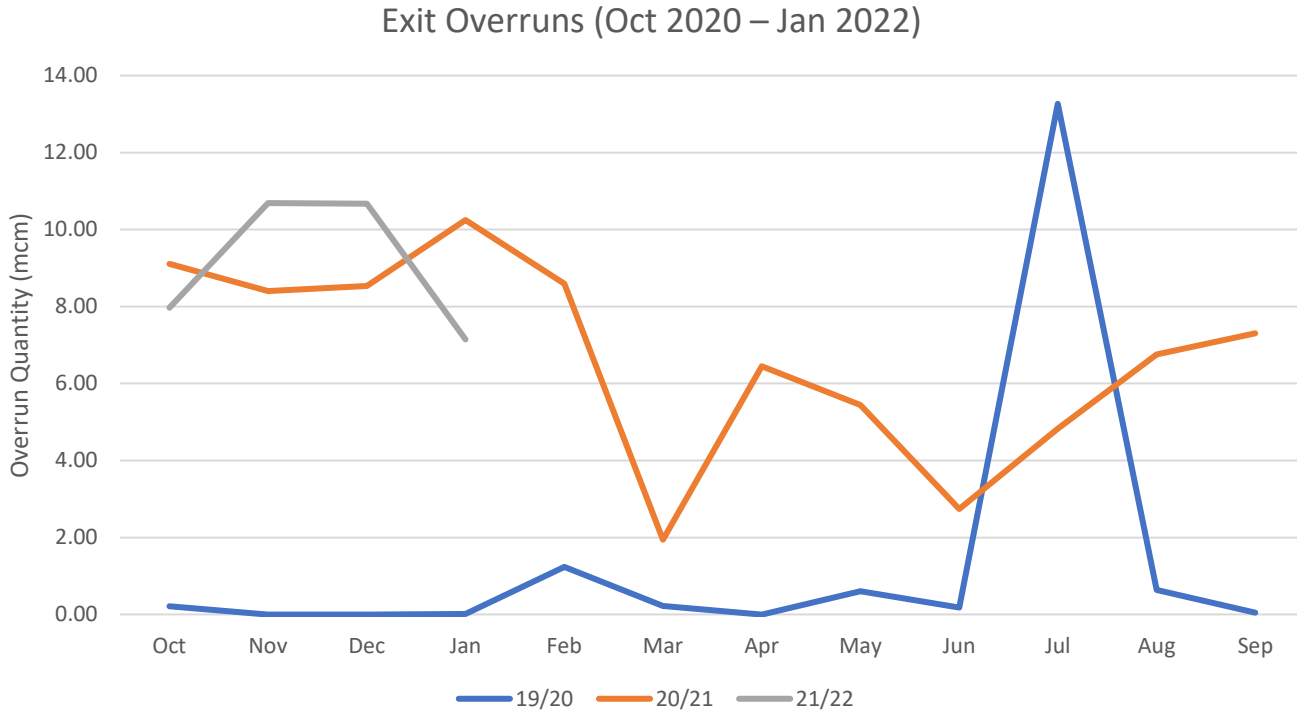
Capacity booked v Overruns

% over capacity bookings	No of Overruns	Quantity mcm	Charges	% of total
0-3%	5119	73.89	2,012,925	33.49
3-4%	207	12.39	313,314	5.21
4-5%	153	9.33	247,498	4.12
5-10%	347	21.38	559,337	9.31
10-50%	445	45.88	1,177,190	19.58
50%+	105	46.84	1,245,966	20.73
No capacity booked	973	10.41	239,599.03	3.99
Negative overruns	89	7.28	214,914.56	3.58
Total (Oct 2020-Jan2022)	7438	227.41	6,010,746	100

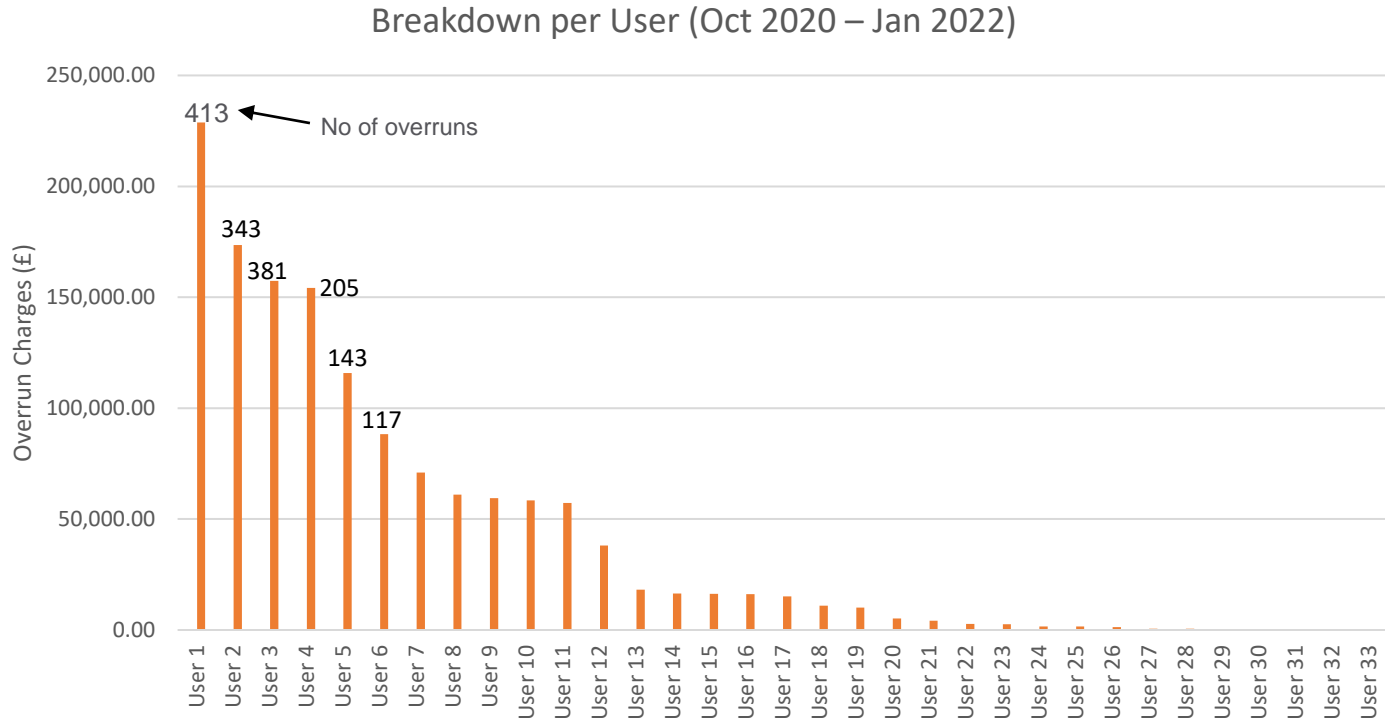
Exit (Oct 2021 - Jan 2022)

	No of Overruns		Charge Quantity (mcm)		Charge Amount (£)		No of Users		No of Offtakes	
	21/22	20/21	21/22	20/21	21/22	20/21	21/22	20/21	21/22	20/21
Oct	174	137	7.97	9.11	104,048	111,795	22	16	35	28
largest (3)	User A		1.24		17,300					
	User B		1.04		14,488					
	User C		0.57		7,979					
Nov	235	536	10.69	8.40	138,166.28	102,317	16	19	32	30
largest (3)	User D		0.79		11,029					
	User E		0.69		9,655					
	User E		0.63		8,733					
Dec	190	398	10.67	8.53	125,350	96,008	15	21	33	31
largest (3)	User F		2.09		29,051					
	User C		1.33		18,511					
	User E		0.47		6,541					
Jan*	201	142	7.15	10.25	85,106	131,627	18	17	32	31
largest (3)	User D		0.76		10,525					
	User B		0.42		5,835					
	User F		0.25		3,488					
Total 2021/22 Gas Year	800	1,213	36	36	452,672	441,746				
Total (from 1st Oct 2020)	1,921	1,261	118	53	1,406,243	474,086				

Exit OVERRUNS



Exit Overrun



Exit Overrun (Oct 2020 – Jan 2022)

Exit point type	Overrun charges (£)	Charge quantity (mcm)	% of total
IP	69,346	5.16	4.5
Storage	115,745	19.76	17.2
Industrial	180,957	13.64	11.8
Power Station	1,020,926	76.11	66.3
Total	1,386,975	114.68	100

Capacity booked v Overruns

No of Overruns	Overrun Quantity (mcm)	Overrun charge (£)	Sum of Overrun charge (£)
1314	0.24	0.01-100.00	28,727.05
730	14.26	101.00-500.00	183,986.01
327	17.99	501.00-1,000.00	230,418.40
323	67.43	1,000-10,000	785,829.56
10	12.61	10,000+	158,014.94
TOTAL			
2704	112.54		1,386,975.96

Appendix



Entry data (October 2020 – September 2021)

	No of Overruns		Charge Quantity (mcm)		Charge Amount (£)		No of Users		No of ASEPs	
	20/21	19/20	20/21	19/20	20/21	19/20	20/21	19/20	20/21	19/20
Oct	319	129	10.84	3.40	270,470.21	34,373.94	31	21	9	8
Nov	369	98	15.83	3.77	442,615.19	10,749.94	25	17	8	9
Dec	403	123	7.63	5.41	180,741.39	35,823.08	26	18	10	7
Jan	379	200	8.73	6.64	203,889.59	69,319.21	23	25	8	10
Feb	410	117	8.31	2.93	196,899.49	30,807.88	24	15	8	8
Mar	500	160	10.90	6.48	273,012.66	82,350.69	24	24	8	7
Apr	565	146	25.93	15.64	606,193.82	57,607.67	29	20	8	9
May	551	141	9.93	3.55	227,449.21	36,474.81	29	17	10	6
Jun	405	132	12.82	2.43	303,336.73	26,130.22	26	18	8	8
Jul	416	130	10.99	3.50	260,174.05	27,093.50	25	17	7	7
Aug	480	87	9.81	0.84	232,032.88	11,725.55	24	11	7	5
Sep	480	108	11.16	3.42	264,246.95	46,301.54	25	16	8	5
Total*	5277	1571	142.88	58.01	3,461,062.17	468,758.03				

Exit data (October 2020 – September 2021)

	No of Overruns		Charge Quantity (mcm)		Charge Amount (£)		No of Users		No of Offtakes	
	20/21	19/20	20/21	19/20	20/21	19/20	20/21	19/20	20/21	19/20
Oct	137	1	9.11	0.21	111,795	2,874	16	1	28	1
Nov	158	0	8.40	-	102,316		19		30	0
Dec	178	0	8.53	-	96,007		21		31	0
Jan	142	2	10.25	0.02	131,626	1	17	1	31	2
Feb	166	8	8.59	1.24	92,831	8,746	15	4	29	4
Mar	144	5	1.94	0.22	23,634	19	15	3	25	3
Apr	218	0	6.45	0.00	78,019	0	20	0	34	
May	179	2	5.45	0.61	66,865	6,906	20	2	31	2
Jun	121	7	2.74	0.18	35,604	4,786	15	3	26	3
Jul	163	15	4.82	13.27	50,184	2,275	17	12	27	3
Aug	167	4	6.76	0.64	58,744	6,725	18	4	27	4
Sep	148	4	7.30	0.04	85,415	3	19	1	30	1
Total	1921	48	80.33	16.42	933,044	32,340				

Reasons for overruns

Entry

- Human error:
 - o missed the last purchasing window due to busy nightshift
 - o booking capacity under a wrong shipper code
 - o using systems which aren't synchronised with Gemini adds complexity/room for making errors
- Wrong information from the production fields i.e. the actual allocation is higher than expected or
- Information from the production field arrives last minute or very late not allowing to accurately amend existing capacity holdings
- Upstream contractual arrangements with the producers allow little or no flexibility i.e. gas starts flowing even though information Users receive confirms there will be no injection

Exit

- Benefits on electricity balancing market outweigh the penalty on the gas side
- Inaccurate forecasting of the 5 remaining hours of the day (gas consumption of the assets)

national**grid**