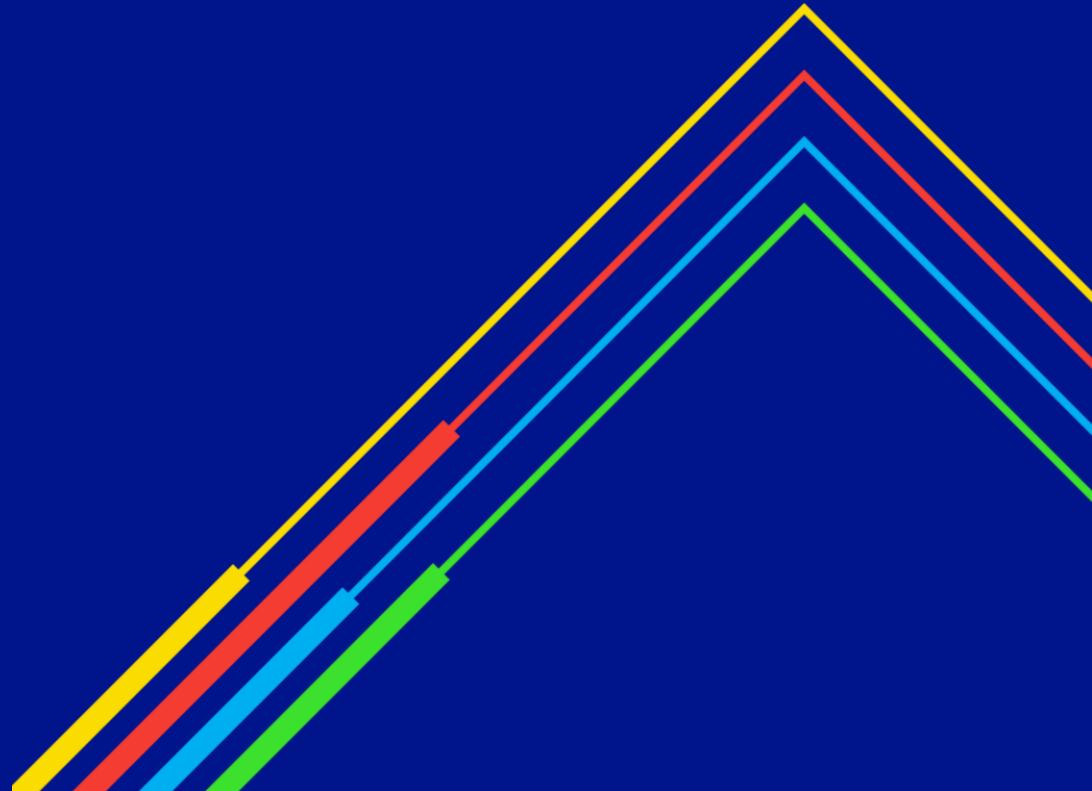


Milford Haven Risk

Transmission Workgroup
9th June 2022

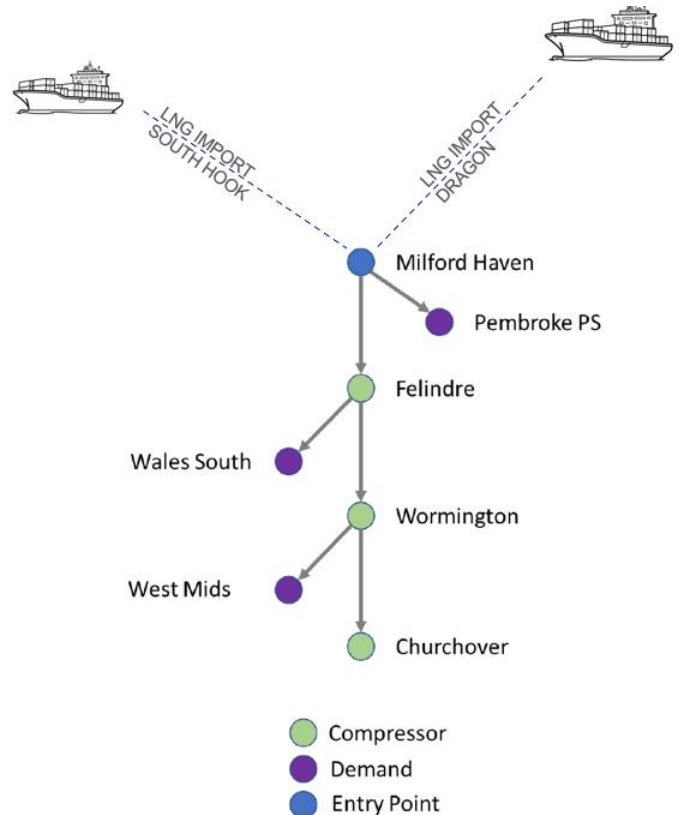
nationalgrid



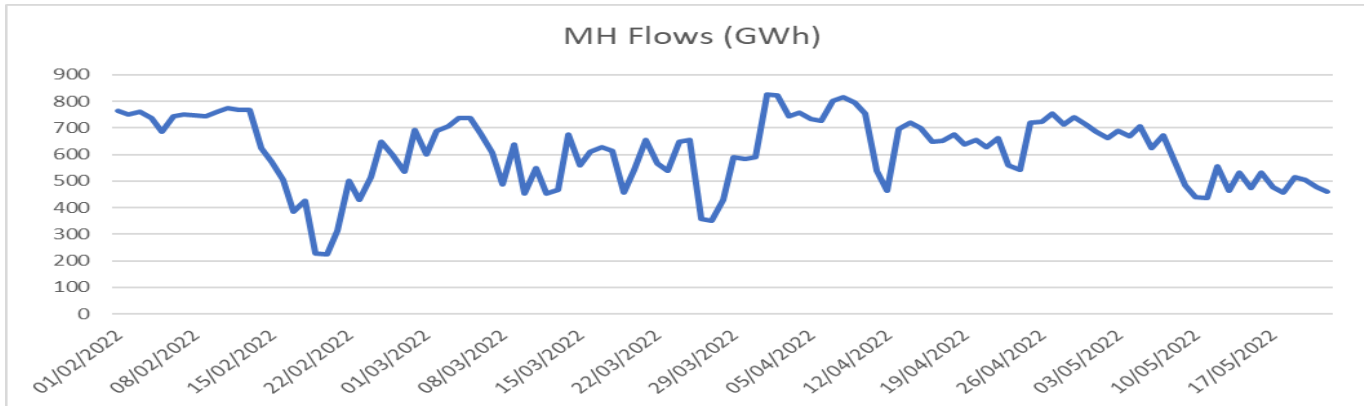
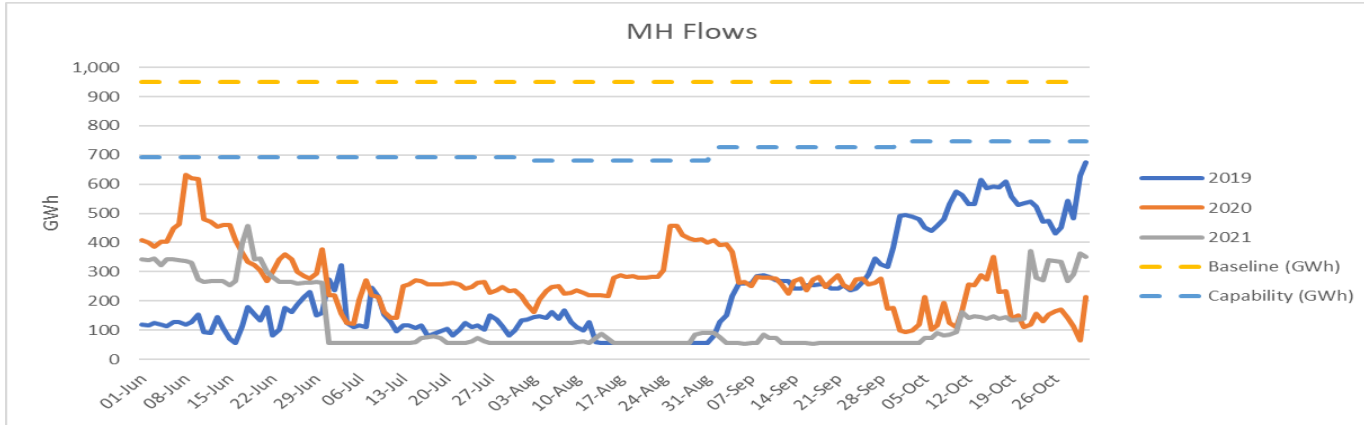
ECR change proposal

- On 9th May Ofgem decided to approve the proposed changes to the NGG's Entry Capacity Release Methodology Statement.
- National Grid can now restrict the release of capacity at the Milford Haven ASEP, but must release any capacity available above capability via the Weekly and Daily auctions (<https://www.nationalgrid.com/gas-transmission/document/139651/download>)

Month	Capability mcm/d	Capability kWh/day
June	63	693,000,000
July	63	693,000,000
August	62	682,000,000
September	66	726,000,000
October	68	748,000,000



Recent flows



Solution - considerations

Factors to include when options are considered:

- timing – can the change be delivered in time for summer 2023
- maintenance – likely to impact capability next year
- geopolitics – are we going to continue seeing the same level of flows
- bookings and flows this summer
- applicability to one or all Entry Points (due or undue discrimination)
- specifics related to cargo supply logistics
- cost v benefit (to LNG parties / rest of the industry / end consumer)

Network constraints at Milford Haven

To be updated

Options

To be updated

national**grid**