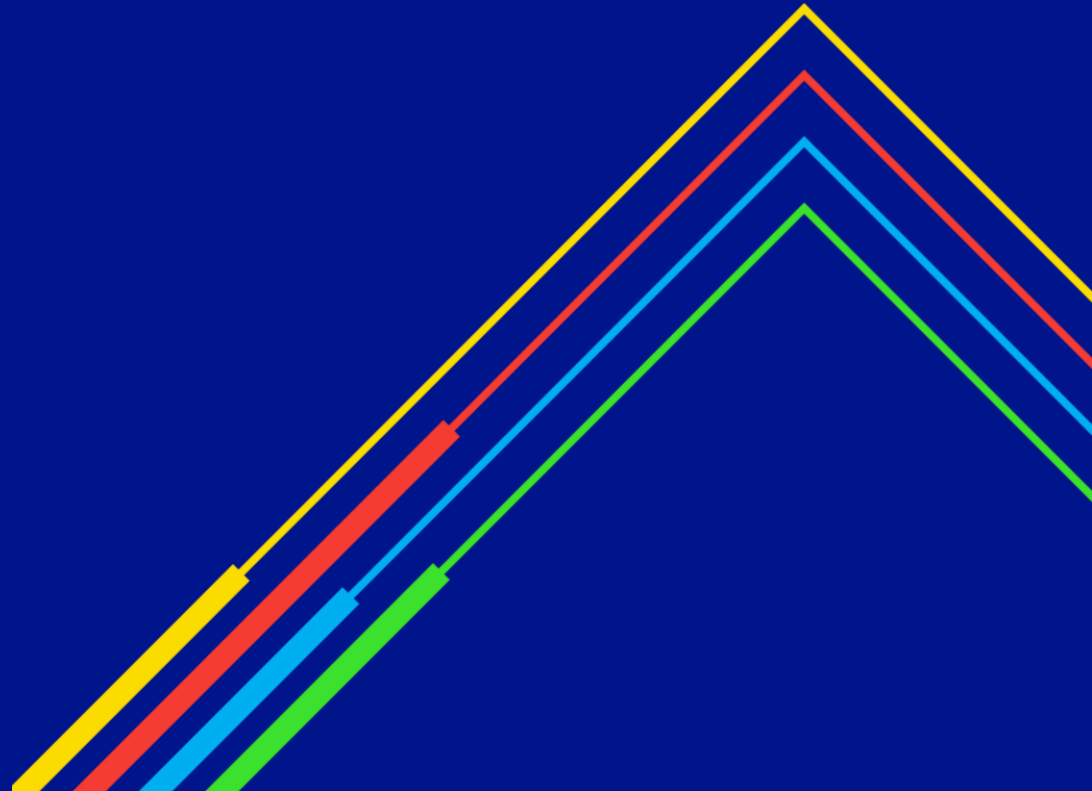


Within day firm capacity product Pre-modification

Transmission Workgroup

4th March 2021

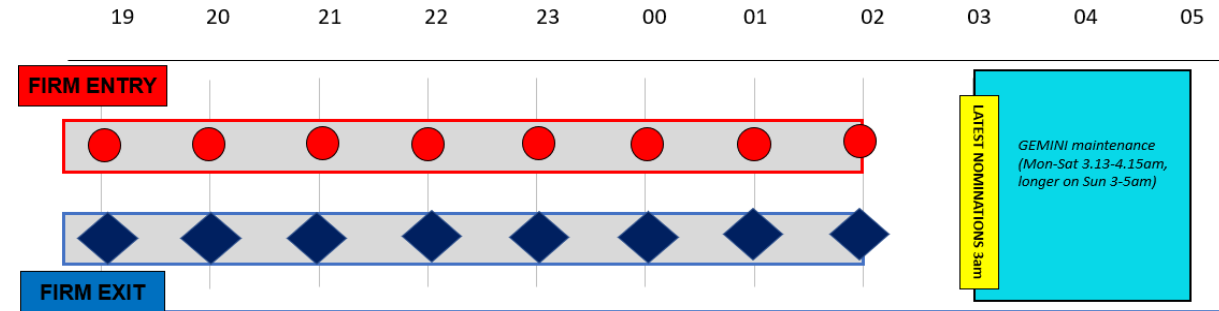
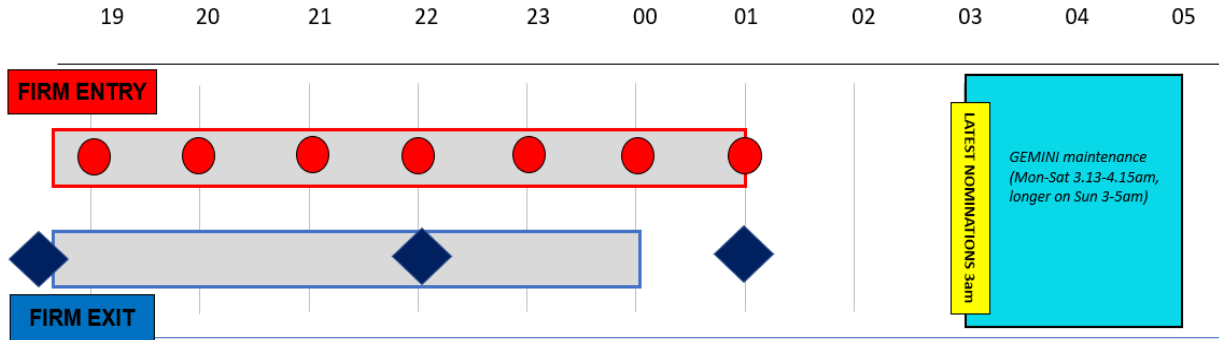
national**grid**



Background

- With the implementation of the new charging regime on 1st October we see a change in capacity booking behaviour. Previously very cheap or free, capacity has become more expensive and therefore what Users now want is to book capacity closer to their flows.
- Power Stations identified the need to react quickly to changes on the electricity market and therefore would like to amend the existing firm within day product (WDDNEX) to make capacity more frequently accessible.
- The current firm within day product doesn't allow enough flexibility to rapidly adjust capacity bookings to changes in demand (exit allocations take place 5 x day).
- The proposed changes will facilitate more frequent auctions/allocations as well as enable Users to align their commercial position with their physical position more effectively later in the Gas Day.

Proposal



- Entry allocations
- ◆ Exit allocations

Before change

After change

Key changes and benefits

The proposed changes include the following variations from the current products:

- Introduction of hourly allocations on Exit
- Addition of 2:00am allocation window on Entry and Exit
- Extension to capacity invitation (bid) window to 2:00am on both Entry and Exit
- Introduction of 30min 'capacity allocation period' on Exit

N.B. The proposal doesn't include changes related to start times of the entry or exit auctions.

Potential benefits:

- Optimised capacity bookings = avoiding unnecessary costs
- Less stranded capacity
- Drive network efficiency/competition = benefit end consumers
- Provide CCGT's with more agile ability to respond to electricity market demand
- Enables the market to respond to NG balancing actions quicker
- Aligning within-day process on entry and exit

national**grid**