



PAC - AUGE issues reporting

13th June 2023

engage 

ELECTRICITY | GAS | INDUSTRY EXPERTS

Welcome: AUGÉ key contacts



David Speake

Lead Consultant

07874 853305

Service Delivery Lead

david.speake@engage-consulting.co.uk



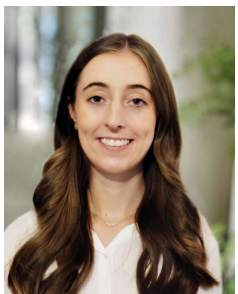
James Hill

Senior Consultant

07395 261632

Methodology Lead

james.hill@engage-consulting.co.uk



Sophie Dooley

Consultant

07814 893658

Data and Modelling Lead

sophie.dooley@engage-consulting.co.uk

AUGE PAC Issues Log

Background

- ▶ In our role as AUGE we identify issues which may be related to performance against required processes
 - ▶ Some issues have an obvious and material impact on UIG (calculated at Line in the Sand)
 - ▶ Others are apparent in the data we receive but have no UIG impact
- ▶ We generally note these issues in the AUG Sub-Committee but their resolution is out of scope of our core service of producing Weighting Factors
- ▶ To help progress issue resolution, AUG Sub-Committee has requested a periodic formal report to PAC of any issues that we identify in the course of our analysis
- ▶ We now present an updated AUGE PAC issues log every six months: once following Statement production (Q1/2) and once when nearing completion of each year's analysis (Q3/4)

AUG PAC Issues Log (1)

AUGE Issue	PAC Risk	AUGE Contributor	Topic	Description	Impact (GWh) 2022-23	Impact (GWh) 2023-24	Other Metrics 2022-23	Other Metrics 2023-24
AUGE01	1 a)	Theft of Gas	Theft reporting	Detected theft is not always reported into Settlement	50	Not Calculated		35% of MPRNs in the TRAS data appear in TOG
AUGE02	1	Theft of Gas	Theft identification	Only a small percentage of estimated total theft is identified and reported into Settlement	Up to 7TWh	Up to 6.5TWh		
AUGE03		Theft of Gas	Energy reporting	The energy that is reported for the same instances of theft is different between TRAS and TOG (CMS)	Not Calculated	Not Calculated		20% of thefts in both systems have a different volume
AUGE04	14	No Read at the Line in the Sand	Overall Scale	Sites not acquiring a read by line in the sand are creating a large amount of UIG	861	162	436k MPRNs	437k MPRNs
AUGE05	10	No Read at the Line in the Sand	Read Rejection	Shippers are receiving repeated read rejections and they are not resolving the root cause	640	Not Calculated		83% of MPRNs which had reads rejected have a repeat rejection reason

AUG PAC Issues Log (2)

AUGE Issue	PAC Risk	AUGE Investigation	Topic	Description	Impact (GWh) 2022-23	Impact (GWh) 2023-24	Other Metrics 2022-23	Other Metrics 2023-24
AUGE06		No Read at the Line in the Sand	Must Reads	There are monthly read sites with no accepted read at Line in the Sand. Must reads should occur for monthly read sites and this may not be occurring due to the number of sites without a read for more than 3 years	91	Not Calculated		>2k MPRNs in No Read pot qualify for a Must Read
AUGE07	2	No Read at the Line in the Sand	AQ Corrections	AQ corrections are taking place without an associated read being provided	Not Calculated	Not Calculated		
AUGE08		Consumption Meter Errors - Faulty meter	Consumption Adjustments for faulty meters	Consumption adjustments are not occurring in cases where a faulty meter flag has been applied	Not Calculated	Not Calculated		
AUGE09		Correction Factors	Site Specific Correction Factor	Some correction factors are set lower than permitted in legislation	0.5	0.4	30 MPRNs	32 MPRNs
AUGE10	16	Correction factors	Site Specific Correction Factor	Site specific Correction Factors have not been provided by Shippers for all sites that need them	49	53	1.4k MPRNs	1.8k MPRNs

AUG PAC Issues Log (3)

AUGE Issue	PAC Risk	AUGE Investigation	Topic	Description	Impact (GWh) 2022-23	Impact (GWh) 2023-24	Other Metrics 2022-23	Other Metrics 2023-24
AUGE11		Isolated sites	Advancing Isolated Sites	Isolated sites have meter reads which show that the site is consuming therefore creating UIG	47	19	1.9k MPRNs from pop. 18k MPRNs are advancing	2.5k MPRNs from pop. 22.7k MPRNs are advancing
AUGE12	22	By-pass	Use of By-pass flag	The open by-pass flag utilisation is low	Not Calculated	Not Calculated		
AUGE13	22	By-pass	Consumption Adjustments	Consumption adjustments completed by-pass operations are rare	Not Calculated	Not Calculated		
AUGE14	8	Unregistered	Unregistered Sites	There are consuming sites that have remained unregistered at the line in the sand	35	53		
AUGE15	9	Shipperless	Shipperless Sites	There are consuming sites that have remained shipperless at the line in the sand	26	15		

AUG PAC Issues Log (4)

AUGE Issue	PAC Risk	AUGE Investigation	Topic	Description	Impact (GWh) 2022-23	Impact (GWh) 2023-24	Other Metrics 22-23	Other Metrics 23-24
AUGE16		Site Classification	Prepayment Sites	The number of prepayment meters recorded on UK Link is lower than the number in operation	Not Calculated	Not Calculated		
AUGE17		Site Classification	Number of Commercial sites	There are a number of non-domestic sites registered as domestic in EUC bands 1 and 2	Not Calculated	Not Calculated		
AUGE18		Site Classification	Number of sites with AMR fitted	The number of sites with AMR recorded on UK link is lower than the number fitted	Not Calculated	Not Calculated		
AUGE19		Dead Sites	Advancing Dead Sites	Dead sites have meter reads which show that the site is consuming therefore creating UIG	Not Calculated	19		1.4k MPRNs from pop. 6.6k MPRNs are advancing

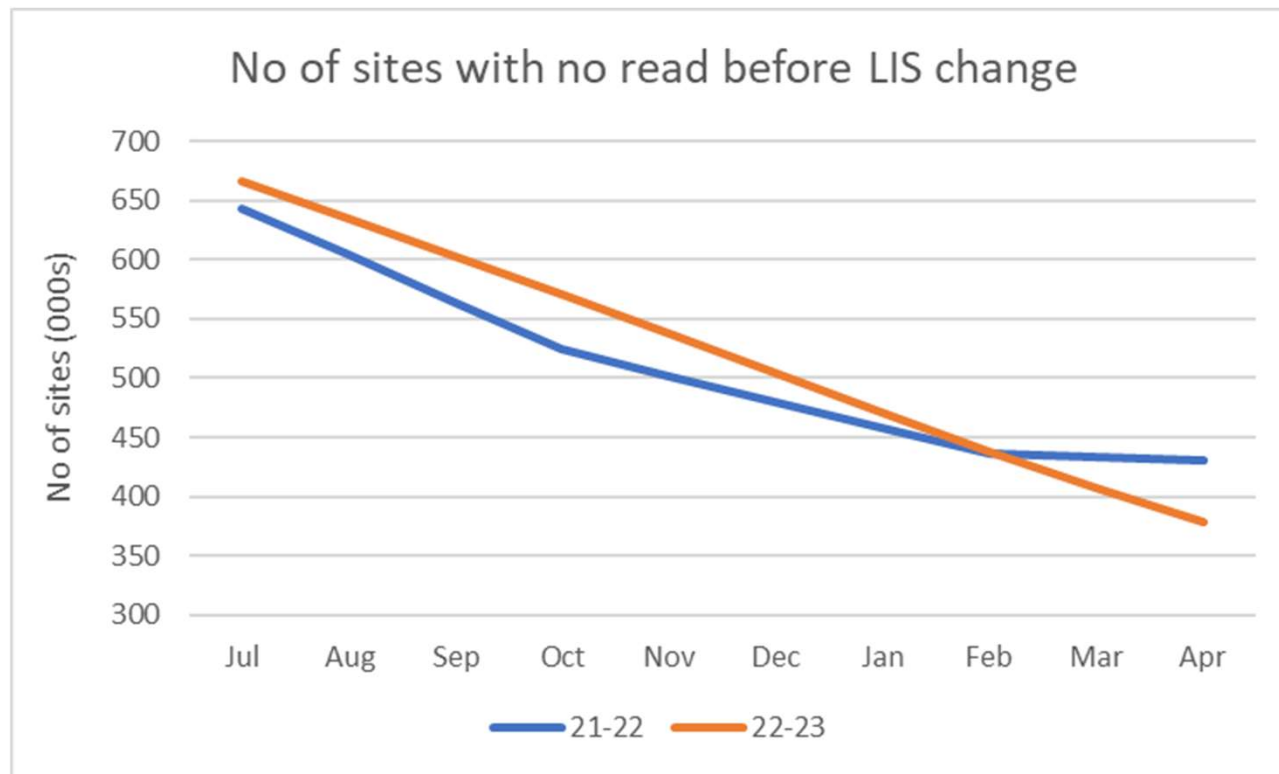
AUGE 01/03: Theft Data

Quality and alignment between TRAS and TOG data for the last year remains poor

- ▶ Only 35% of MPRNs in TRAS dataset appear in TOG data
- ▶ 20% of thefts which appear in both systems have different volumes recorded

AUGE 04/05: No Read at Line in the Sand

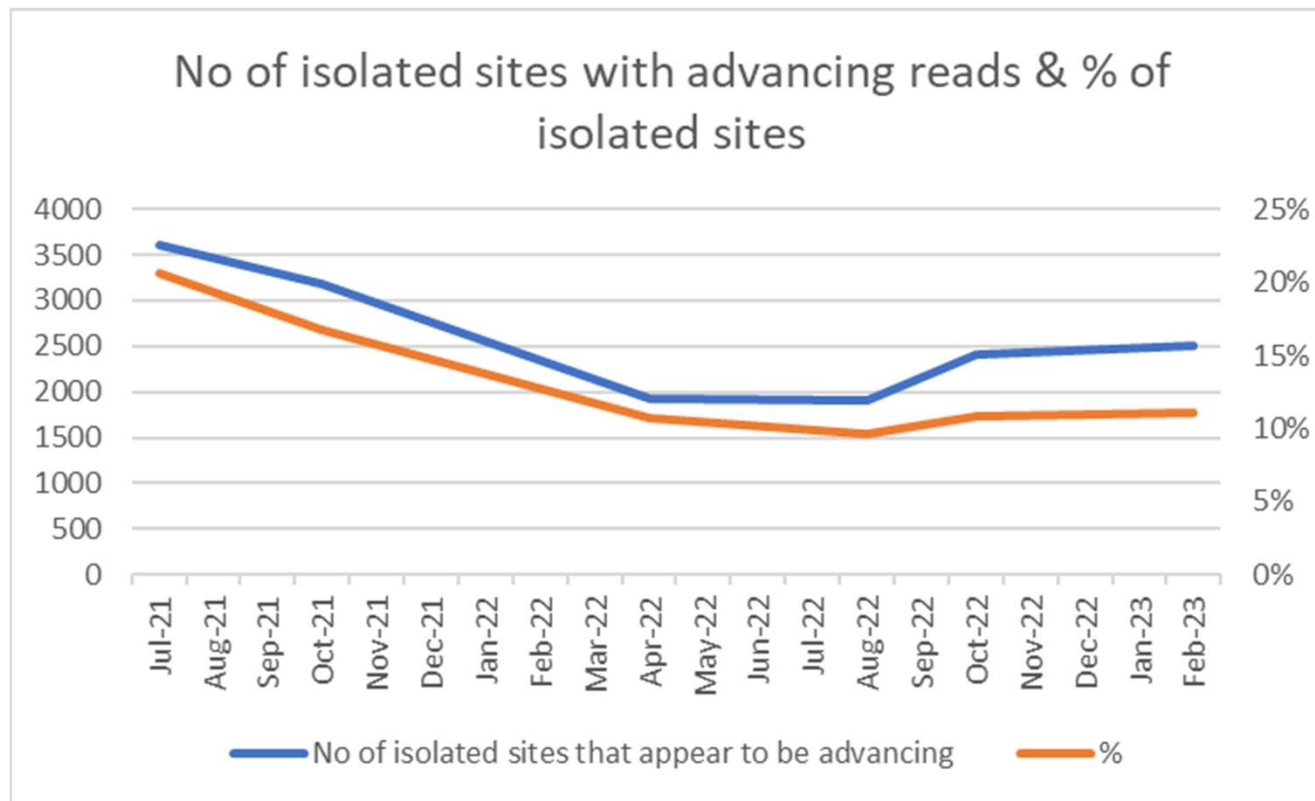
No Read number of sites is broadly in line with last year



- ▶ % of sites in the No Read dataset with more than 1 read rejection is increasing: now stands at 83% (up from 76% 6 months ago)
- ▶ Number of larger/AMR sites should be attracting Must Reads – Still 2k sites

AUGE 11: Isolated Sites

Isolated sites were being addressed but focus appears to have diminished



AUGE 16: Prepayment Numbers

Large numbers of (smart?) gas prepayment meters are not identified in CDSP data

Data from CDSP (May 2023)

- ▶ Class 3: 0.62m
- ▶ Class 4: 1.63m
- ▶ Total: 1.69m

Industry estimates* (Dec 2022)

- ▶ Smart: 1.31m
- ▶ Non-Smart: 1.81m
- ▶ Total: 3.13m

*Engage consolidation of various sources/validation: DESNZ, USwitch, DCC

Next steps

Summary

- ▶ We have provided details of the 19 issues that we have identified as part of our AUGE work. Today we focused on 4 particular areas
- ▶ We will present an updated AUGE issues list, including any new issues during our H2 2023 analysis, at the November or December 2023 PAC meeting
- ▶ Any questions or additional requests for information to AUGE@engage-consulting.co.uk, or via AUGE team contact details



engage 

ELECTRICITY | GAS | INDUSTRY EXPERTS