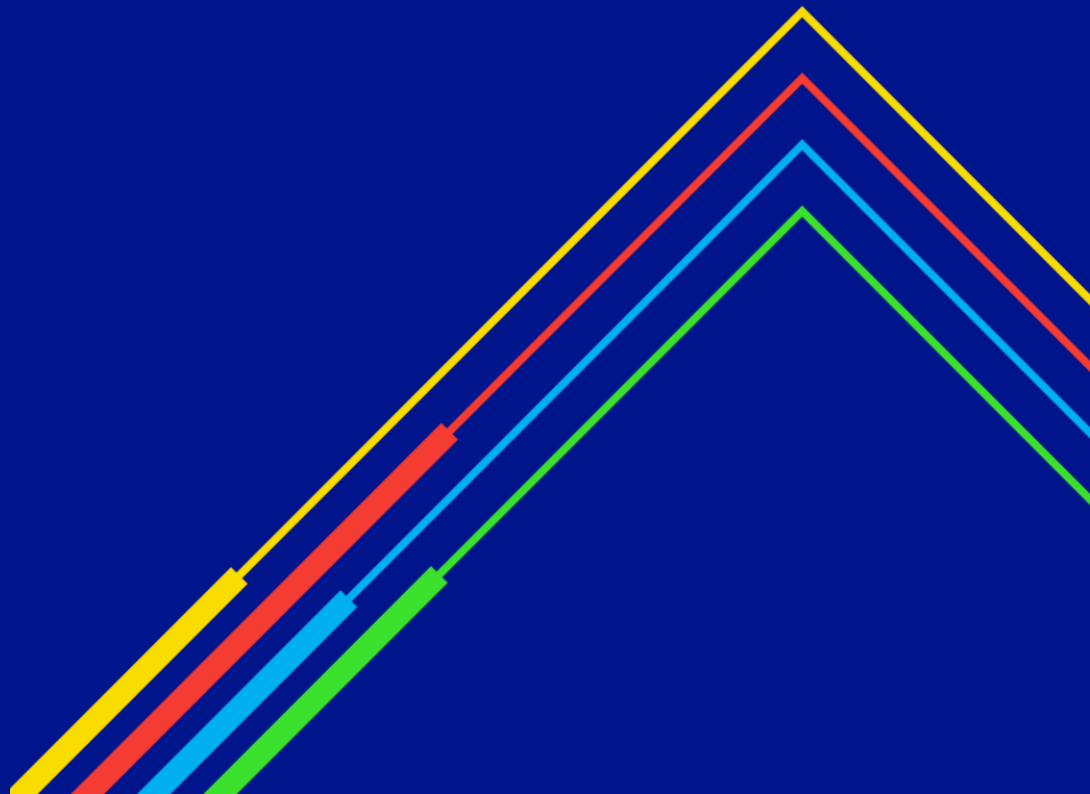


Long Term Summary Report

Transmission Workgroup
7th July 2022

national**grid**



Long Term Summary Report

Location name on Gemini Exit	Quantity Holders(Units)/Month	MAY-2026	JUN-2026
EASTONGREYOT	Baseline Obligation (BFLEC) (kWh/d)	29,600,000	29,600,000
	Incremental Obligation (IFLEC) (kWh/d)	0	0
	Non-Obligated Released (kWh/d)	0	0
	Total Monthly Release Obligation (kWh/d)	29,600,000	29,600,000
	Quantity Reserved (kWh/d)	0	0
	Total Quantity Sold (kWh/d)	28,289,039	28,289,039
	Quantity Unsold (kWh/d)	1,310,961	1,310,961
ECCLESTONOT	Baseline Obligation (BFLEC) (kWh/d)	21,140,000	21,140,000
	Incremental Obligation (IFLEC) (kWh/d)	0	0
	Non-Obligated Released (kWh/d)	0	0
	Total Monthly Release Obligation (kWh/d)	21,140,000	21,140,000
	Quantity Reserved (kWh/d)	0	0
	Total Quantity Sold (kWh/d)	20,922,239	20,922,239
	Quantity Unsold (kWh/d)	217,761	217,761

- Following changes made to the Exit Capacity Substitution Methodology Statement (July 2021), we are making an amendment to the Exit Long Term Summary Report
- ExCS Para 22 says: *NTS Exit Capacity required as a result of demand forecasts provided via Exit Capacity Planning processes as per Standard Special Condition A57 and the Exit Capacity Planning Guidance, will not be Substitutable.*
- Long Term Summary Report lists the level of unsold capacity. The quantity of unsold capacity might be giving a wrong impression that all the capacity unsold is available for substitution / or purchase
- We are inserting the following wording to the guidance page of the report to highlight that the level of Unsold capacity listed in the report might be impacted by GDN’s demand forecast submissions
 - *Capacity required as a result of demand forecast provided by DNs, will not be Substitutable. The quantity of that capacity is not captured as Quantity Unsold in this report. Parties might be able to obtain this information by signing a confidentiality agreement with the relevant Distribution Network Operator.*

national**grid**