

PARR Dashboards

18th January 2022

PAFA



2A.1 Estimated & Check Reads - Product Classes 1 & 2



Report measures the average percentage across all shippers portfolio in each market, where estimated reads were provided. Count of each Shippers portfolio where check reads were not provided

PC1

Industry movement:

- ↓ 0.10% - Monthly change
- ↑ 15.39% - Annual change

Monthly changes:

- ↑ 2.62% Mogadishu
- ↓ 3.93% Rome
- ↑ 2.99% Philipsburg
- ↓ 4.95% Tehran
- ↑ 8.44% Luanda
- ↓ 12.80% Valletta

Observations:

- Estimated reads have increased for both PC1 and PC2 over the course of the year, though the PC2 average appears to be declining. Estimated reads for PC1 appear to be on an upward trend, with new market participants entering the market and skewing the average, though this has stabilised in the last month.
- The number of uncompleted check reads in PC1 have been increasing over the course of the year.

PC2

Industry movement:

- ↓ 4.39% Monthly change
- ↓ 4.76% Annual change

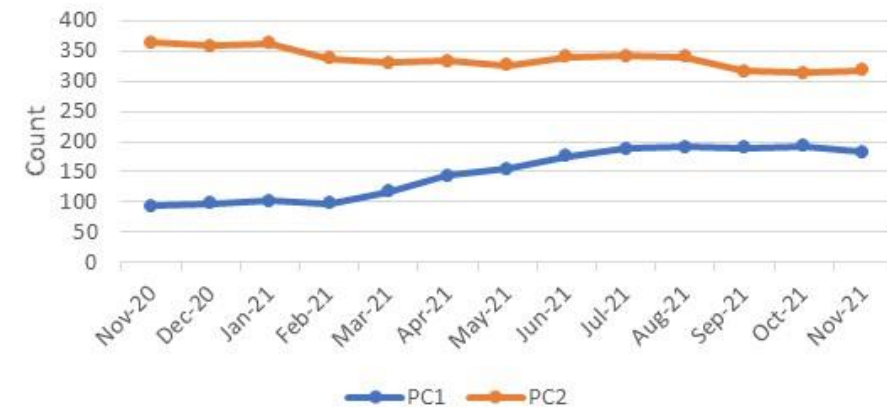
Monthly changes:

- ↑ 3.69% Saipan
- ↓ 2.22% Reykjavik
- ↑ 3.98% Rome
- ↓ 40.53% Praia
- ↑ 14.12% Thimphu
- ↓ 63.33% Manama

2A.1 Percentage of Estimated Reads for PC1 & PC2



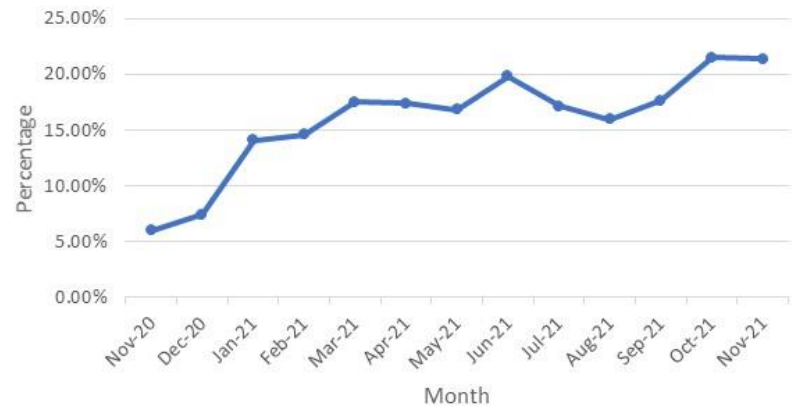
2A.1 Count of Check Reads not completed for PC1 and PC2



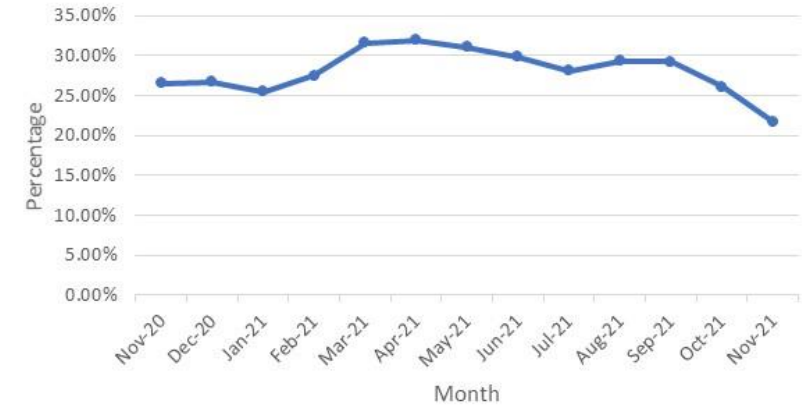
2A.1 Estimated & Check Reads - Product Classes 1 & 2



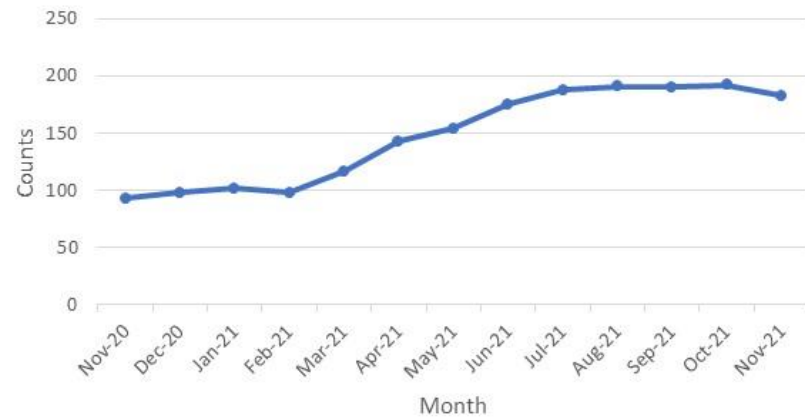
2A.1 PC1 Estimated Read Totals



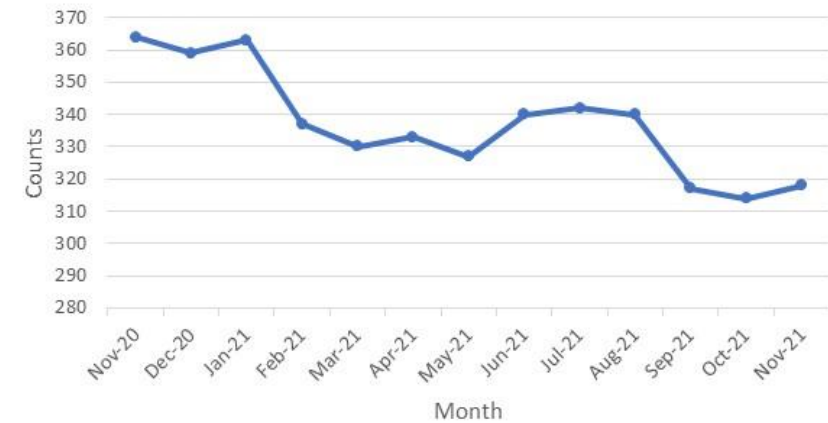
2A.1 PC2 Estimated Read Totals



2A.1 PC1 Check Reads Total



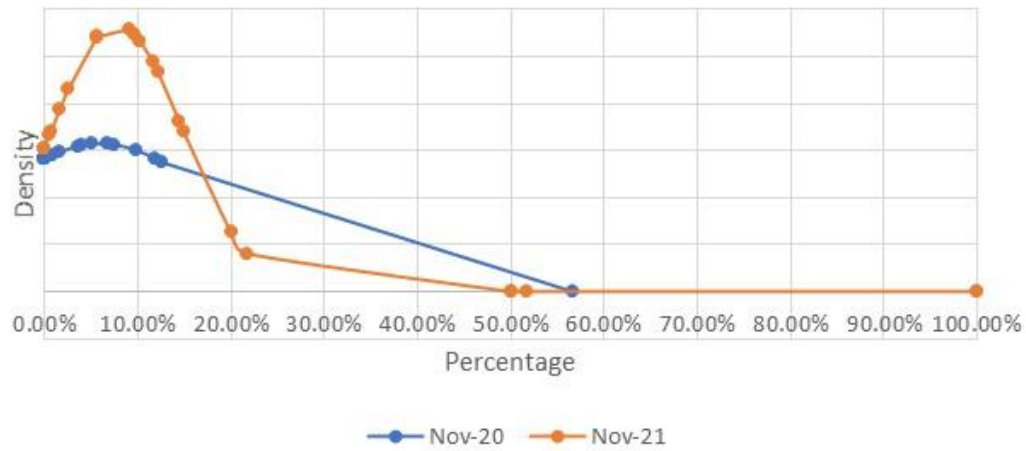
2A.1 PC2 Check Read Totals



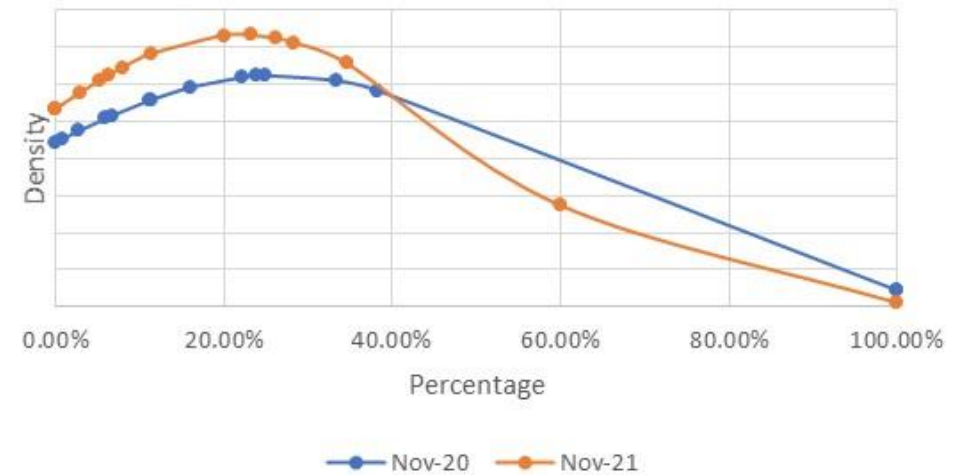
2A.1 Estimated & Check Reads - Product Classes 1 & 2



2A.1- 12 Month comparison (Average of PC1 Estimated Reads)



2A.1- 12 month comparison (Average of PC2 Estimated Reads)



2A.2 – No Meter Recorded



Report measures the percentage of each shippers portfolio where no meter recorded in the supply point register

PC1

0% for all shippers

PC2

0% for all shippers

PC3

Highest shippers:

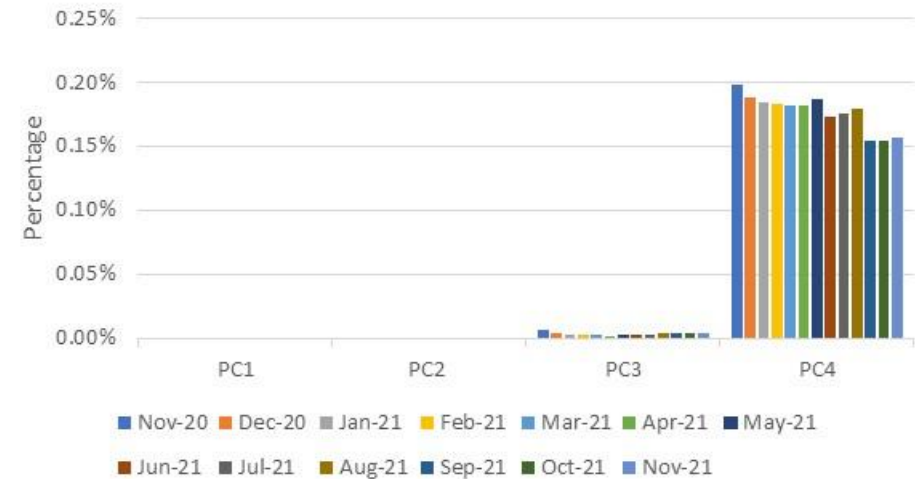
Dili 0.02%
Praia 0.50%

PC4

Highest shippers:

Djibouti 1.48%
Belmopan 2.69%
Luxembourg 21.31%

2A.2 Percentage of No Meter recorded by Product Class



Observations:

- The % of no meter recorded in PC4 continues to decline from the highs seen in 2020.
- The PAC, PAFA and Xoserve are working with the relevant Shippers in this area who are driving the increase in the number of no meters recorded.

2A.3 No Meter Recorded and data flows received



Report measures the percentage of each shippers portfolio where no meter recorded in the supply point register and data flows received

PC1 & PC2
0% for both product classes

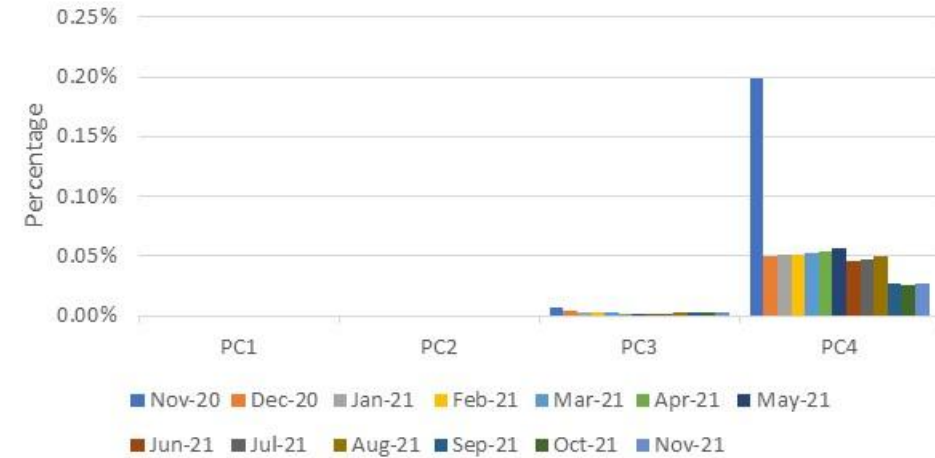
PC3

Highest shippers:
Praia **0.12%**

PC4

Highest shippers:
Belmopan **0.70%**
Roseau **0.82%**
Luxembourg **1.64%**

2A.3 No Meter recorded by Product Class and data flows received



2A.4- Shipper Transfer Read Performance

Report measures the percentage of Shipper portfolio of opening meters reads provided following confirmation

Industry movement:

↓ 3.31% Monthly change

↓ 9.98% Annual change

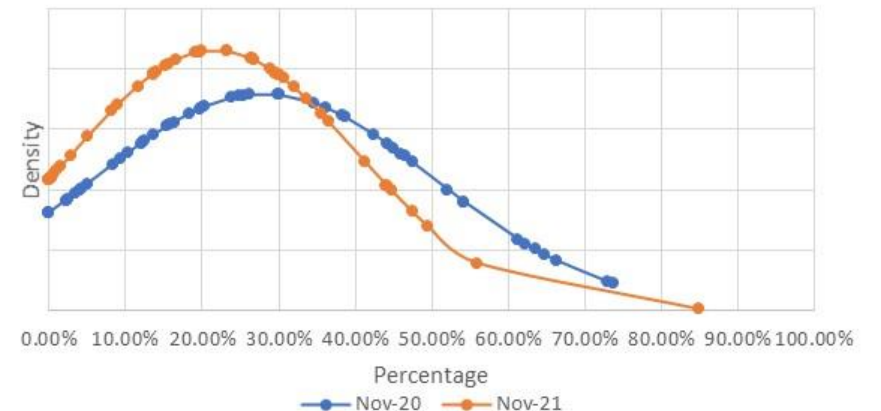
Observations:

- The number of transfer reads being submitted within the relevant window are still well below the requirements of the UNC.
- The previous two months have seen declines with the Supplier of Last Resort (SoLR) movements have seen declining performance for those Shippers.
- The PAFA will continue to monitor this area.

2A.4 Percentage of opening meter reads provided by industry total



2A.4- 12 Month Comparison of Shipper Transfer Read Performance



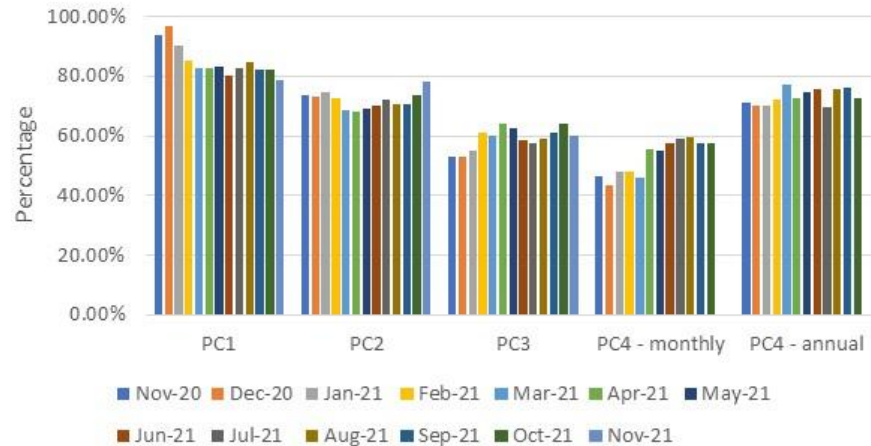
2A.5- Read Performance



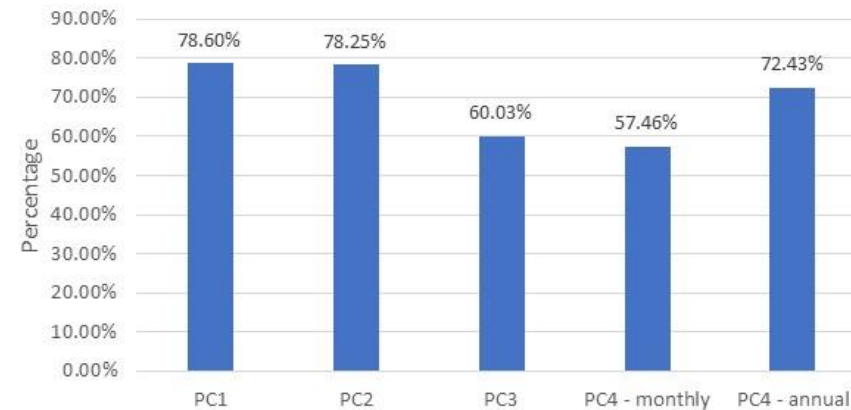
Report measures the average percentage of Shipper portfolio submitting reads in November 2021

PC4 Monthly and Annually read measures the average percentage of Shipper portfolio submitting reads in October 2021

2A.5 Percentage of Product Class read submissions



2A.5 Industry average percentage of Product Class read submissions



Poorest performing Shippers:

PC1

0.00% Khartoum
0.00% Marigot
48.33% Canberra

PC2

0.00% Tehran
40.00% Tiraspol
65.42% Reykjavik

PC3

0% Berlin
0% Oranjestad
0% Paramaribo
0% Riyadh

PC4 (Monthly)

0% Baghdad
0% Bern
0% Berlin
0% Gaborone
0% Maputo

PC4 (Annual)

0% Alofi
0% Marigot
0% Kingstown
0% Basseterre
0% Quito
0% Bamako
0% Nairobi

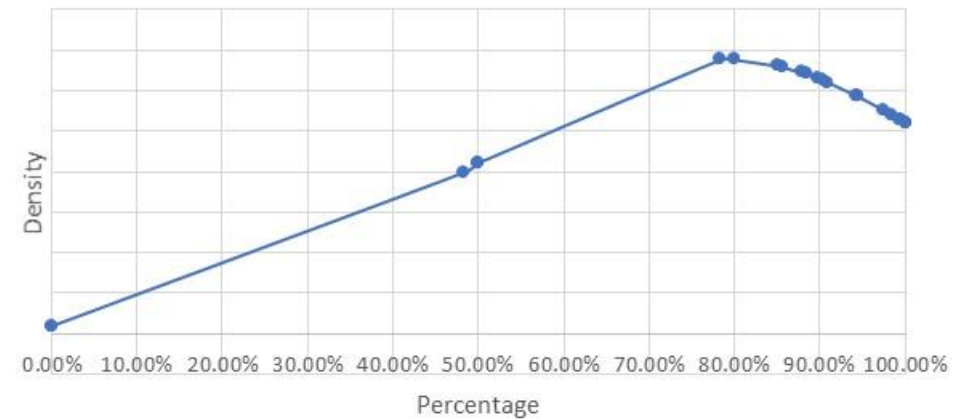
2A.5- Read Performance (PC1)



Read Performance - PC1



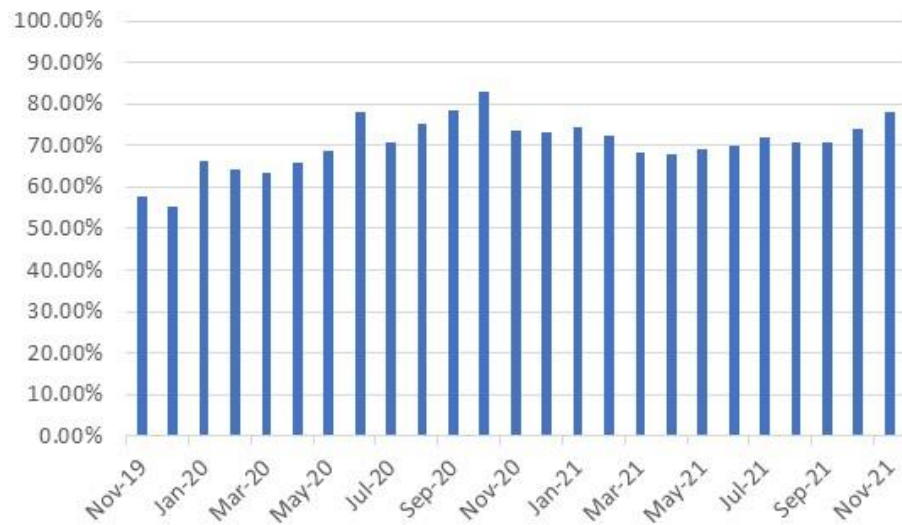
2A.5 Distribution of percentage of PC1 sites providing meter reads



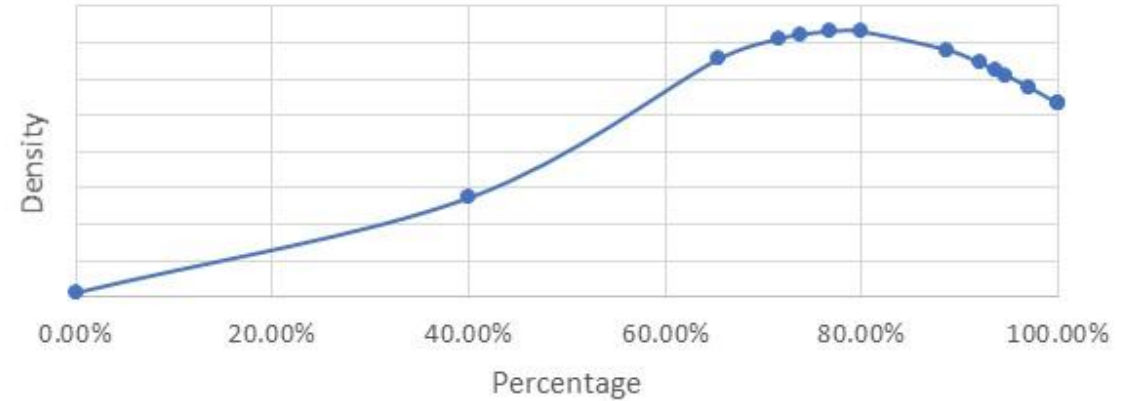
2A.5- Read Performance (PC2)



Read Performance - PC2



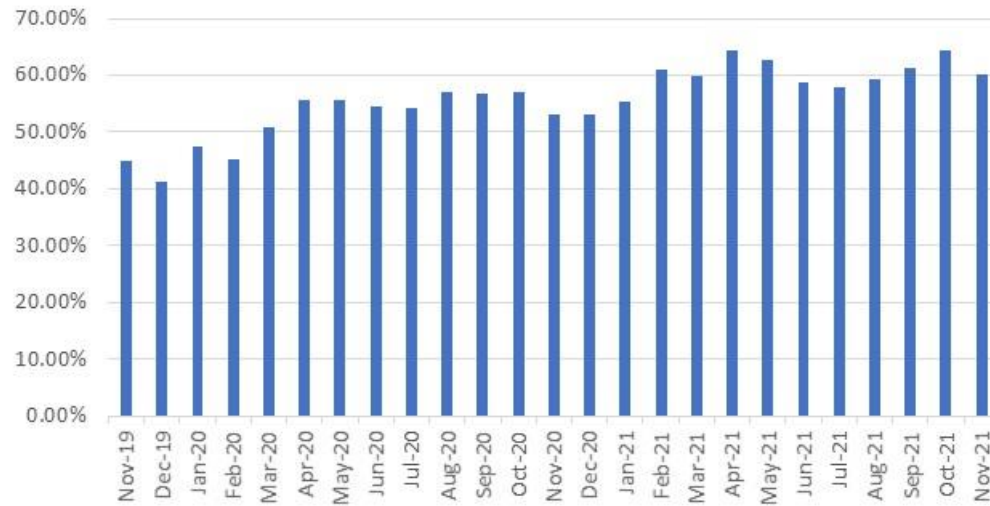
2A.5 Distribution of percentage of PC2 sites providing meter reads



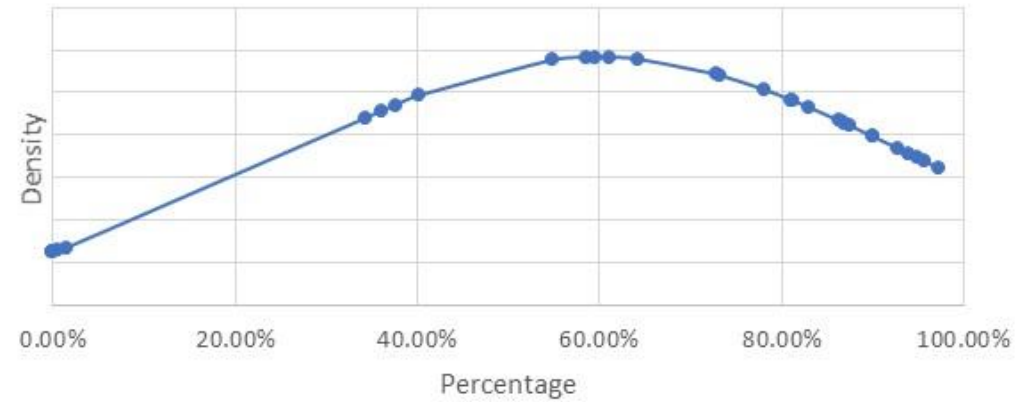
2A.5- Read Performance (PC3)



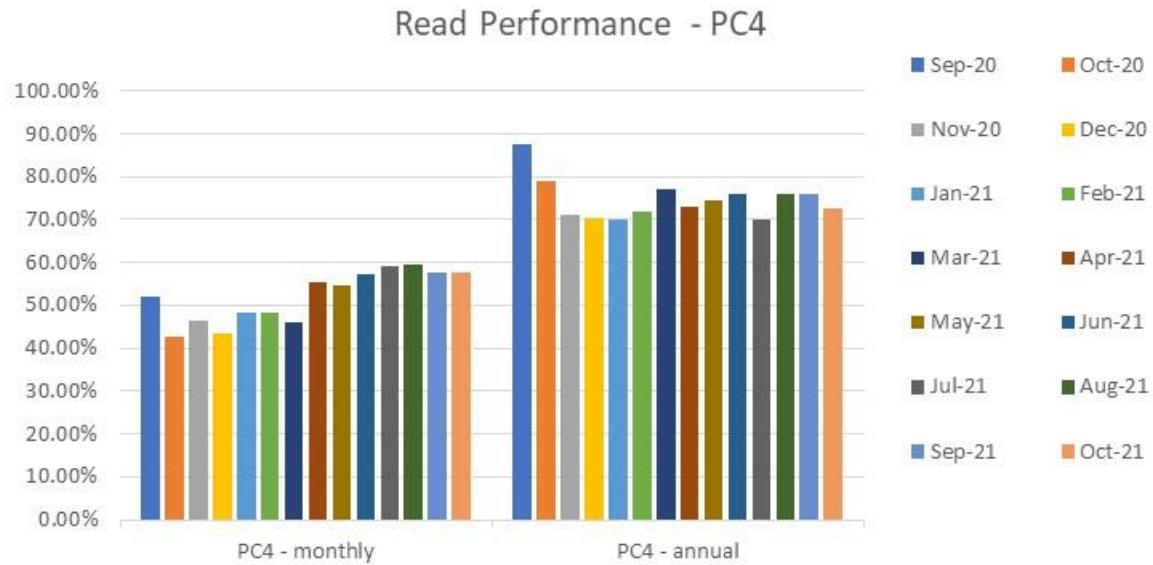
Read Performance - PC3



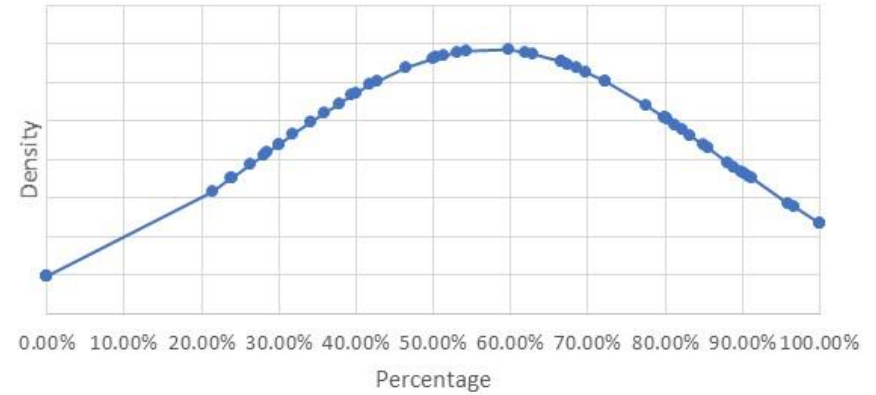
2A.5 Distribution of percentage of PC3 sites providing meter reads



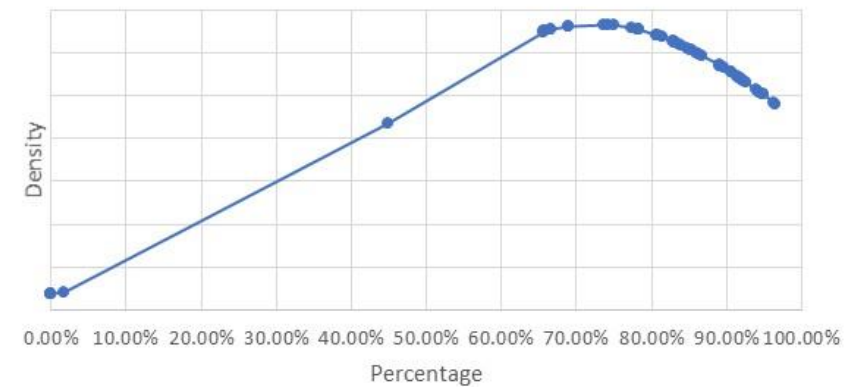
2A.5- Read Performance (PC4)



2A.5 Distribution of read performance for PC4 Monthly sites



2A.5 Distribution of percentage of PC4 Annual sites providing meter reads

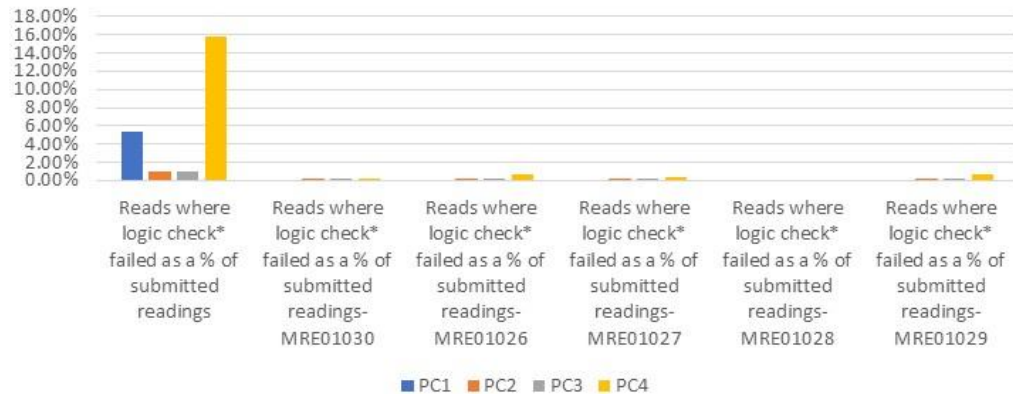


2A.6 Meter Read Validity Monitoring



Report measures the percentage of Shipper portfolio where reads submitted failed validation

2A.6 Industry total percentage of meter read validity failure by Product Class - November 2021



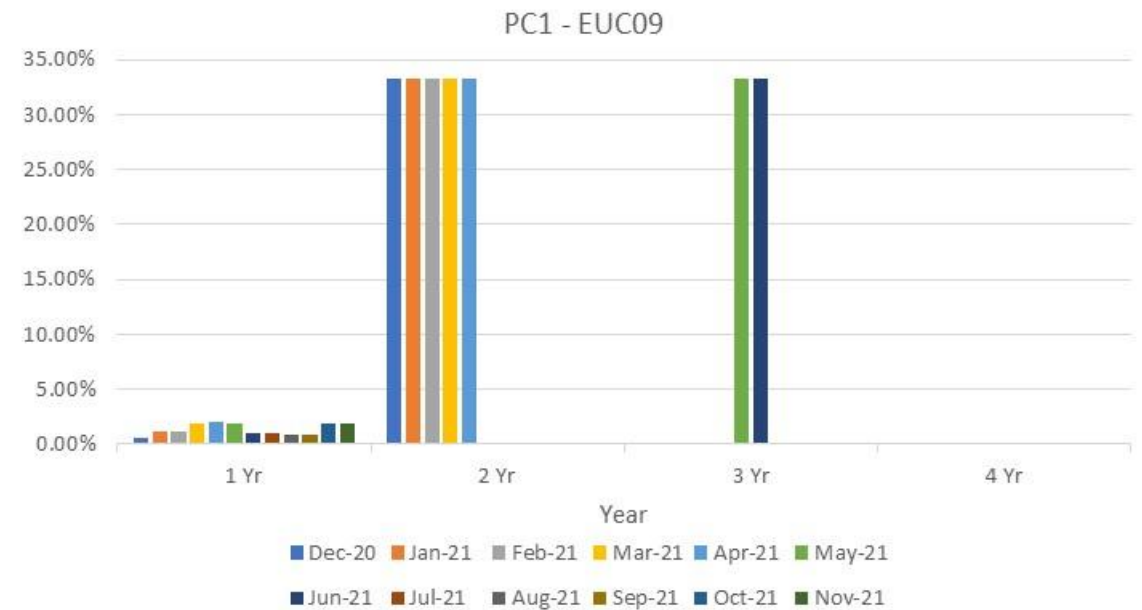
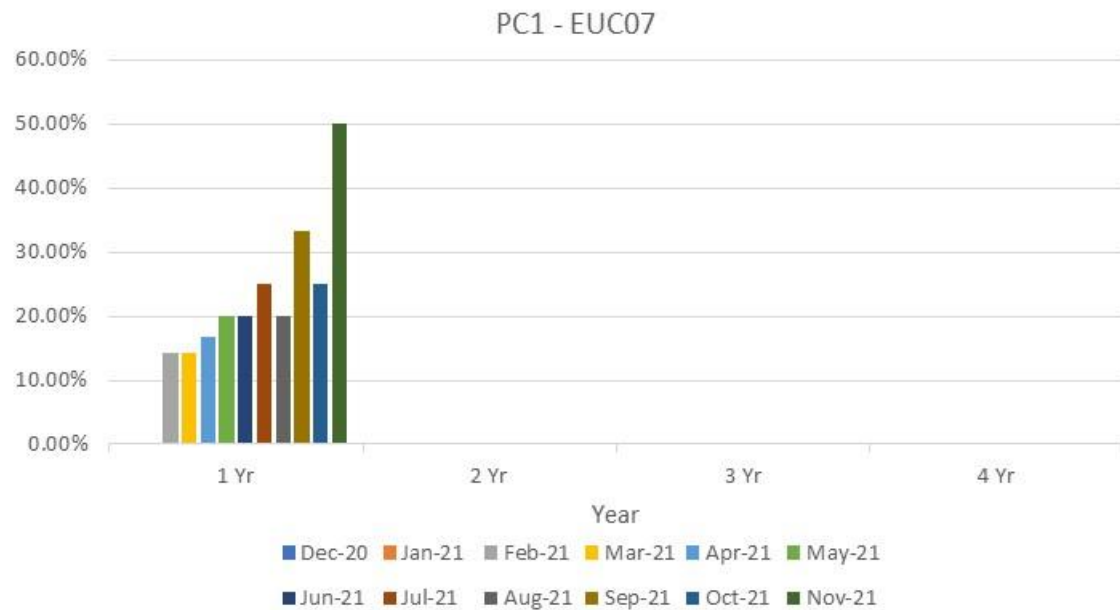
Product Class	Reads where logic check failed as a % of submitted readings	MRE01030	MRE01026	MRE01027	MRE01028	MRE01029
1	Kigali – 68.91%					
2	Washington – 24.56%	Thimphu – 2.16%	Reykjavik – 1.09%	Brazzaville – 1.27%		Brazzaville – 1.99%
3	Bishek – 100%	Khartoum – 13.94%	Gitega – 0.03%	Roseau – 3.08%		Tiraspol – 22.46%
4	Accra – 100%	Canberra – 39.58%	Kinshasa – 8.56%	Sarajevo – 7.69%		Khartoum – 50.00%

2A.7 No Reads Received for 1, 2, 3 or 4 years – Product Class 1

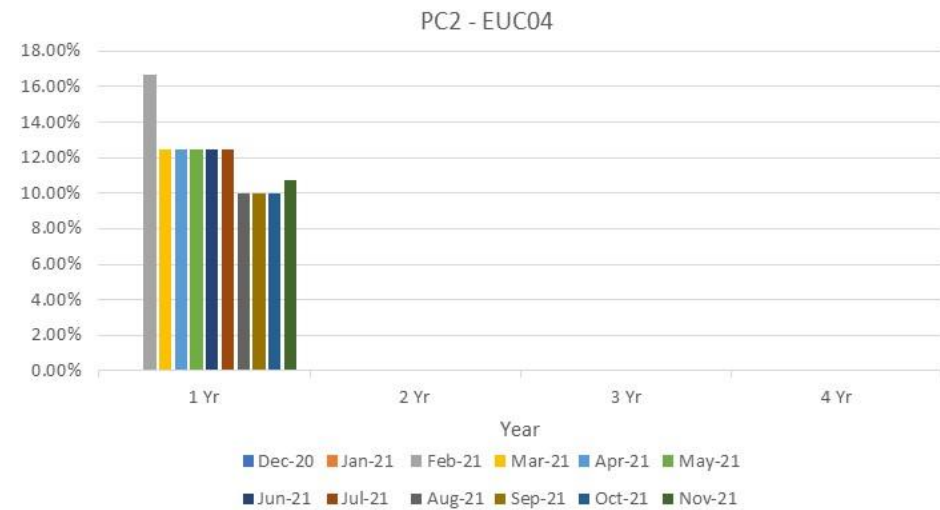
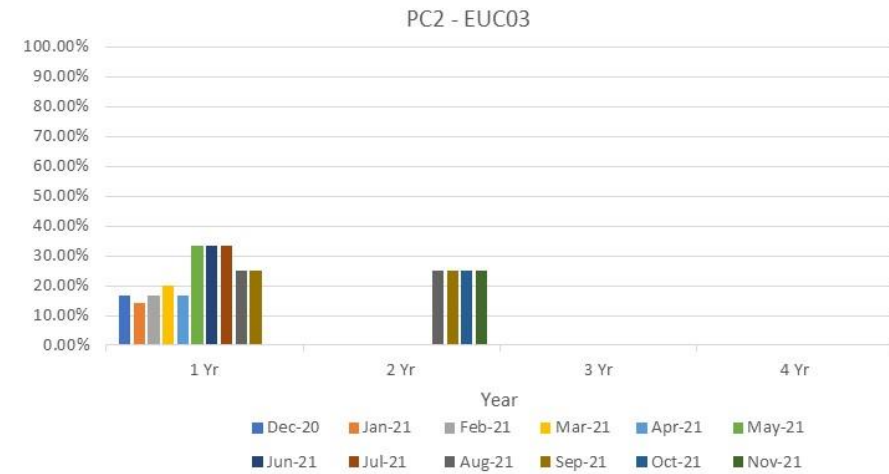
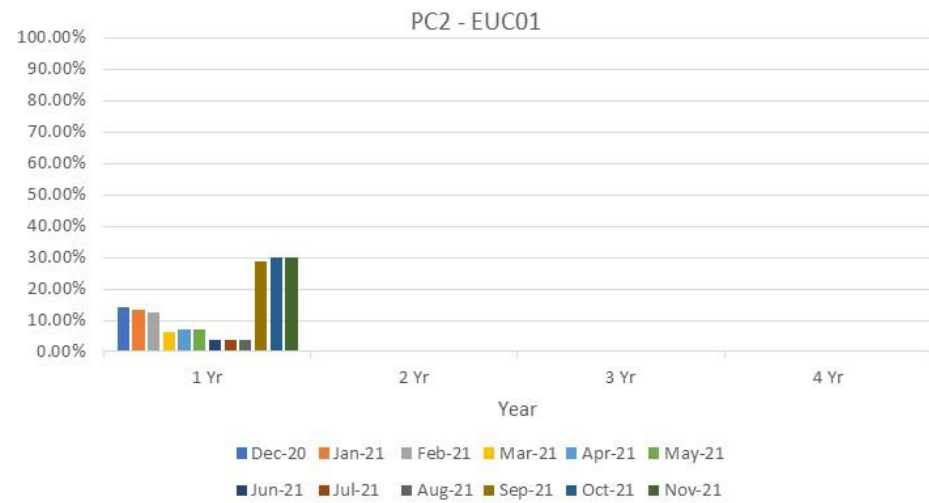


Report measures the percentage of Shipper portfolio in the specified AQ band without a meter reading for the specified period

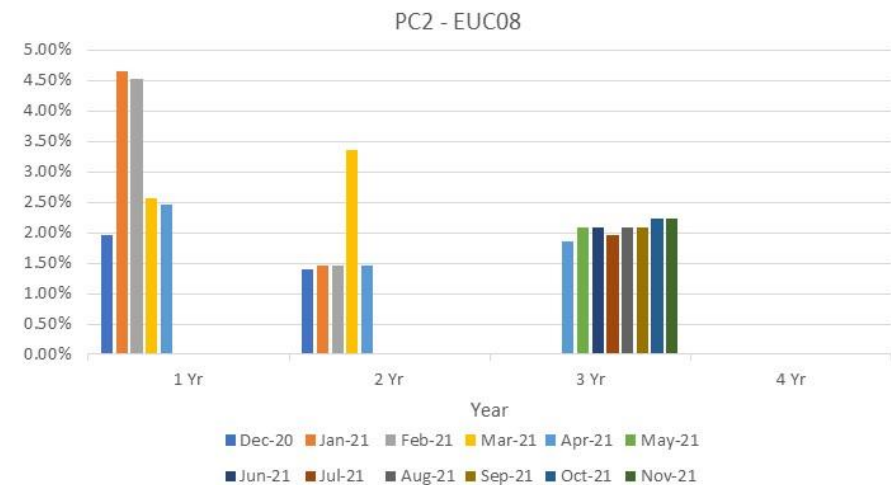
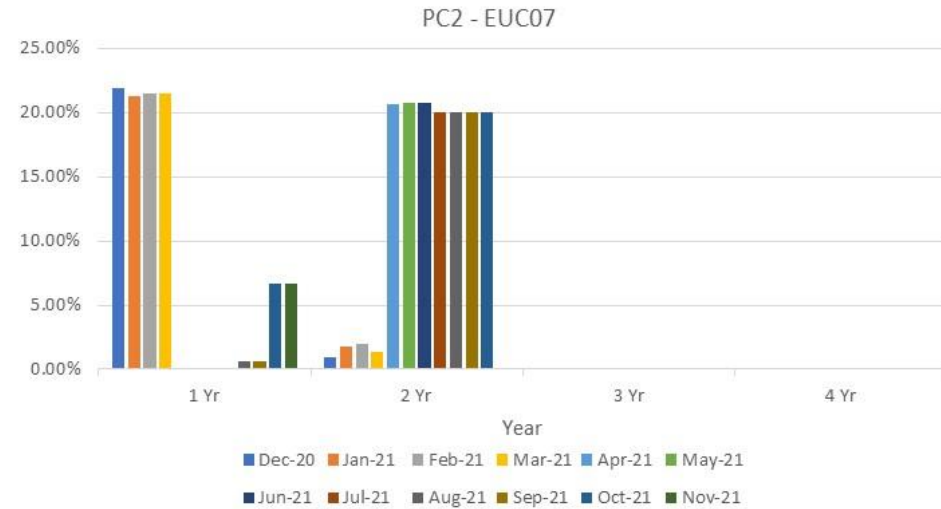
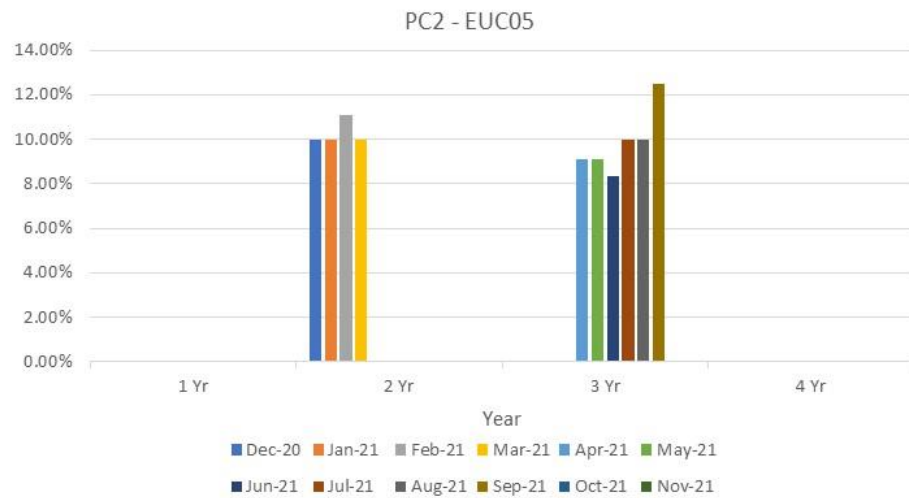
EUC01 – EUC06, EUC08 have no meters which have not been unread for a period less than one year in recent months



2A.7 No Reads Received for 1, 2, 3 or 4 years – Product Class 2



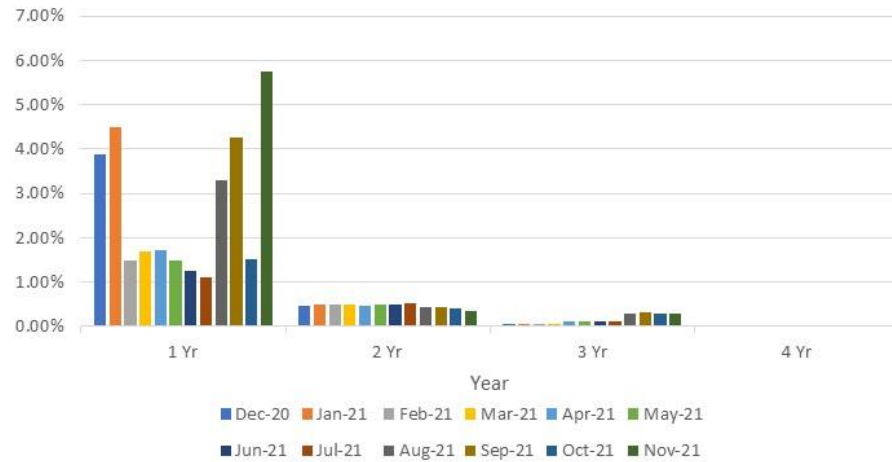
2A.7 No Reads Received for 1, 2, 3 or 4 years – Product Class 2



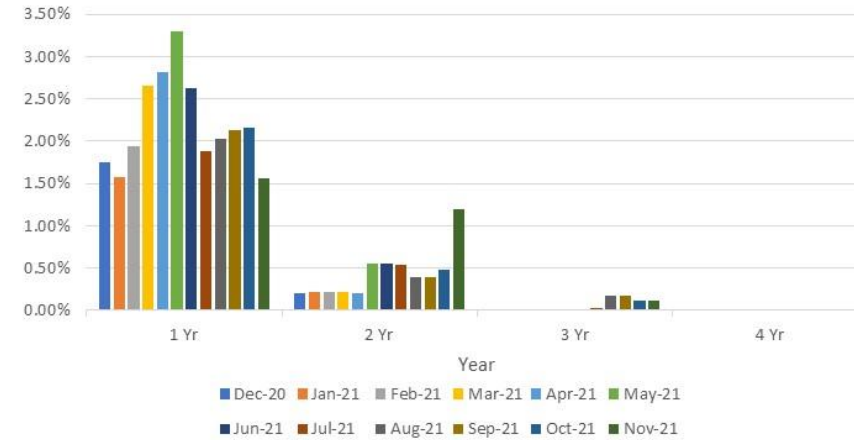
2A.7 No Reads Received for 1, 2, 3 or 4 years – Product Class 3



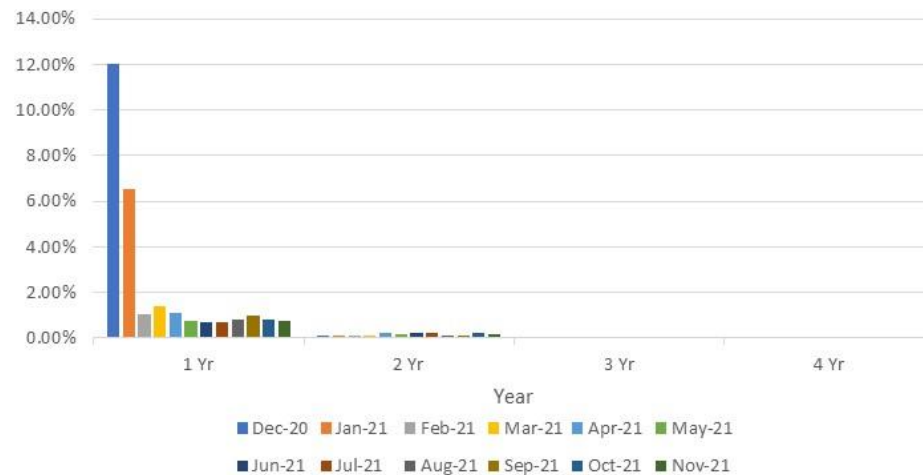
PC3 - EUC01



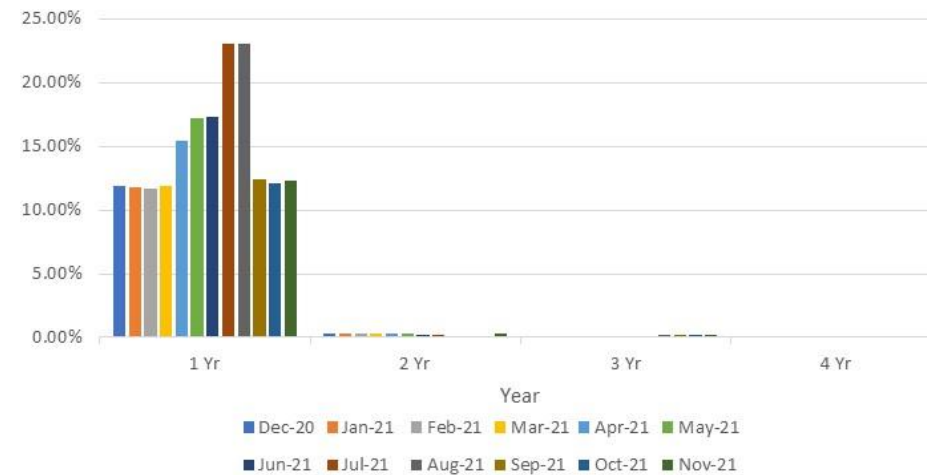
PC3 - EUC02



PC3 - EUC03



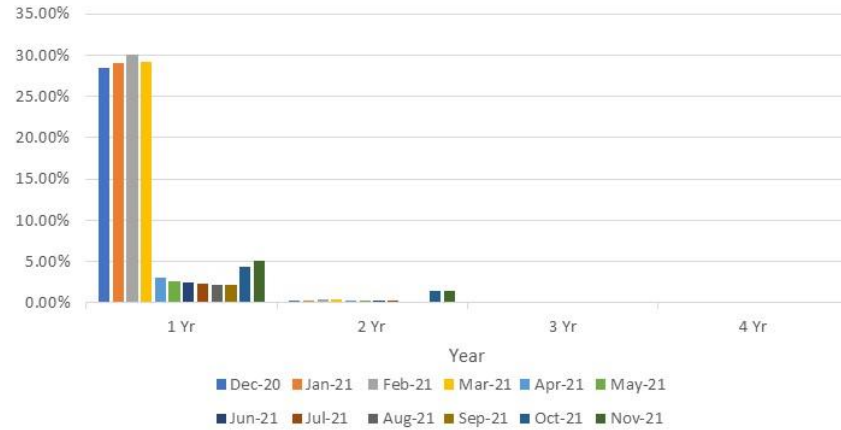
PC3 - EUC04



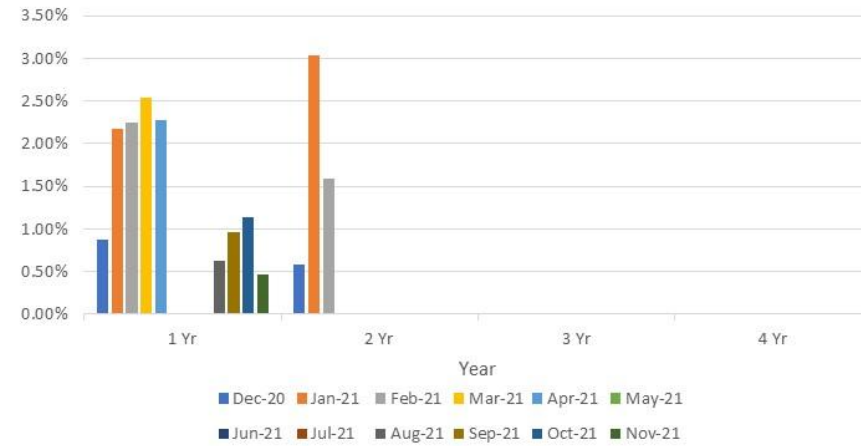
2A.7 No Reads Received for 1, 2, 3 or 4 years – Product Class 3



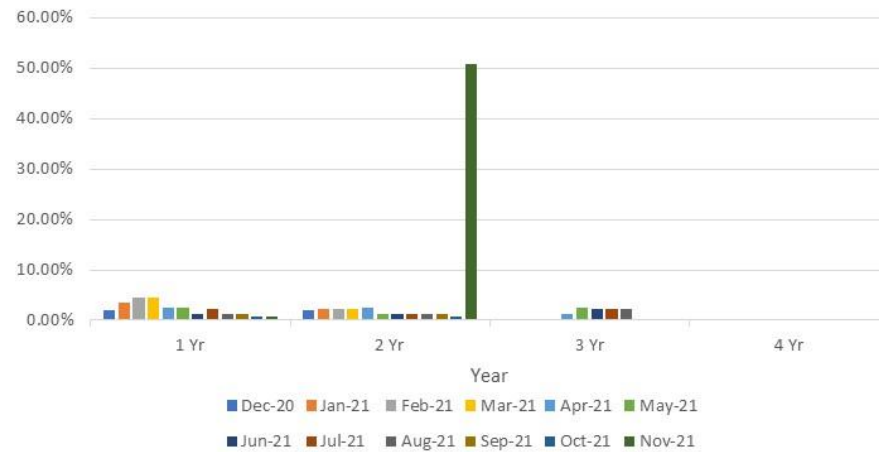
PC3 - EUC05



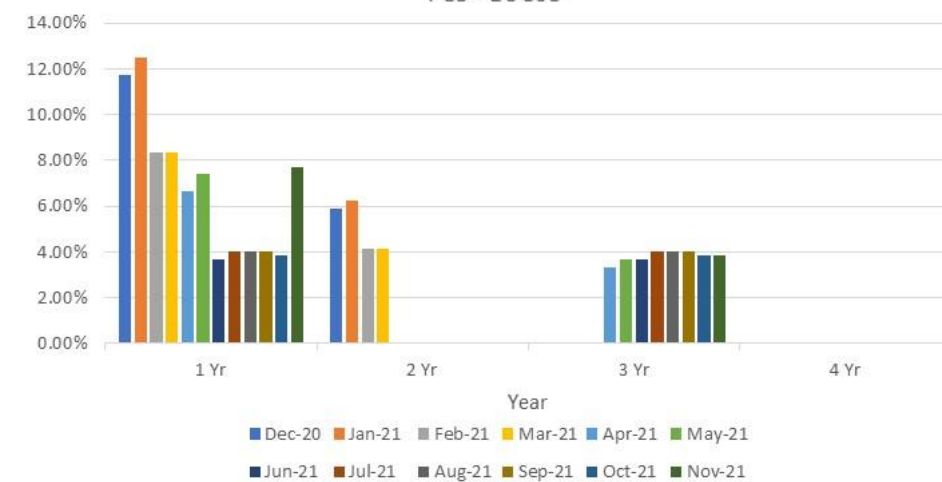
PC3 - EUC06



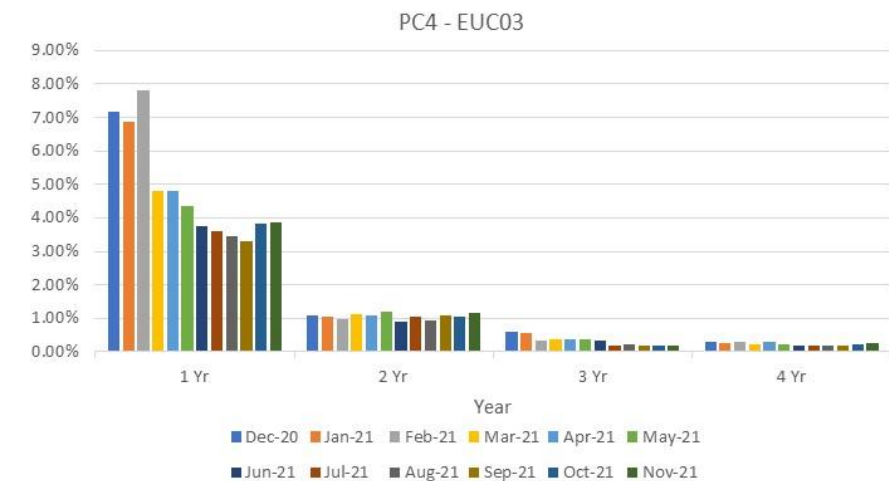
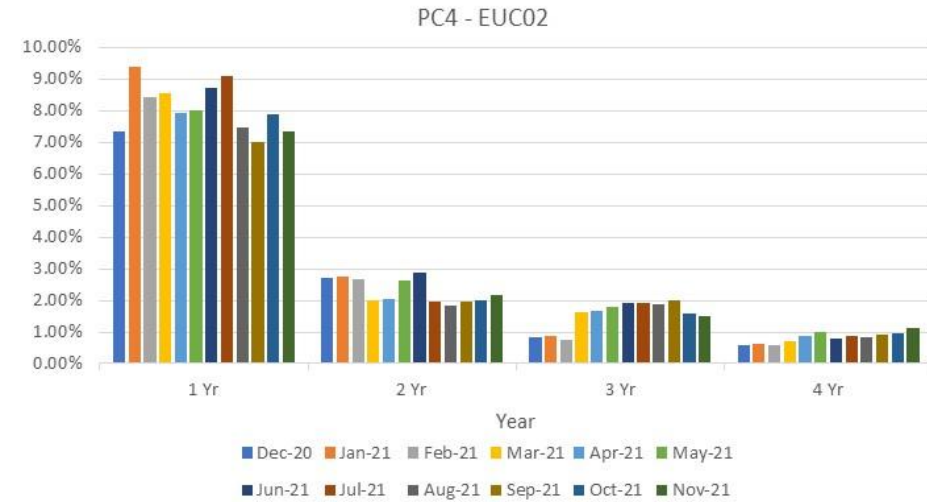
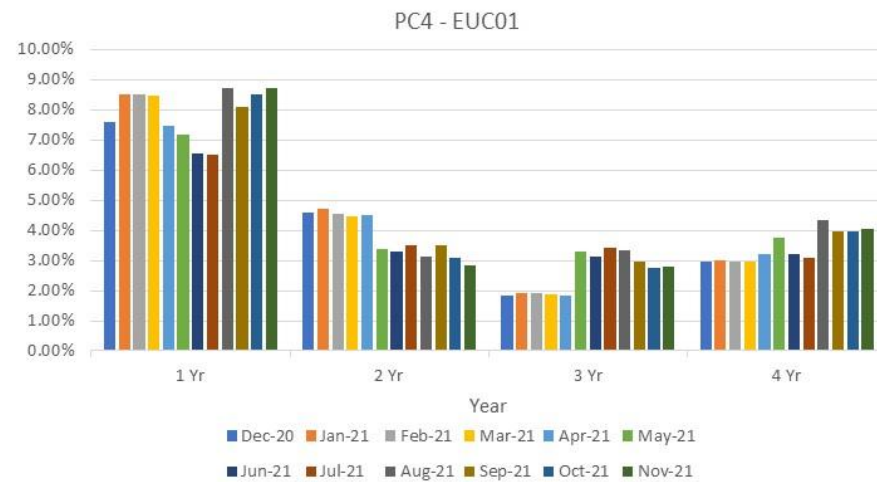
PC3 - EUC07



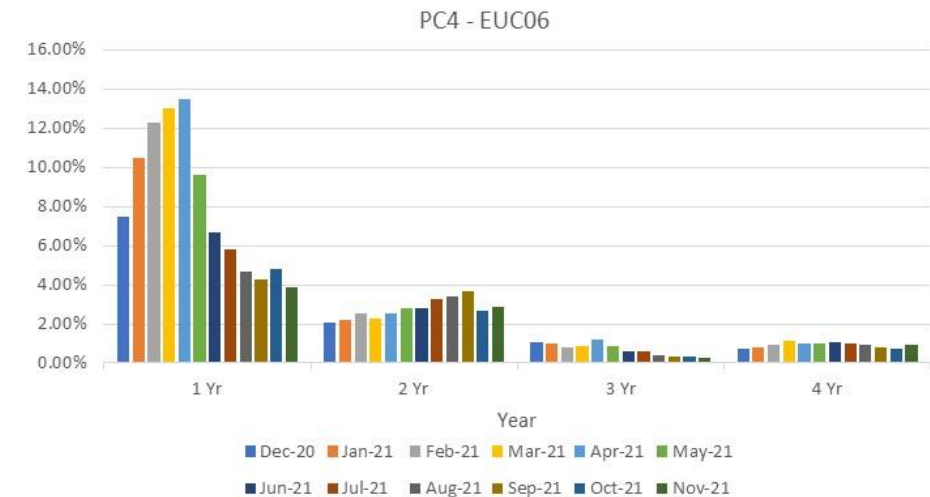
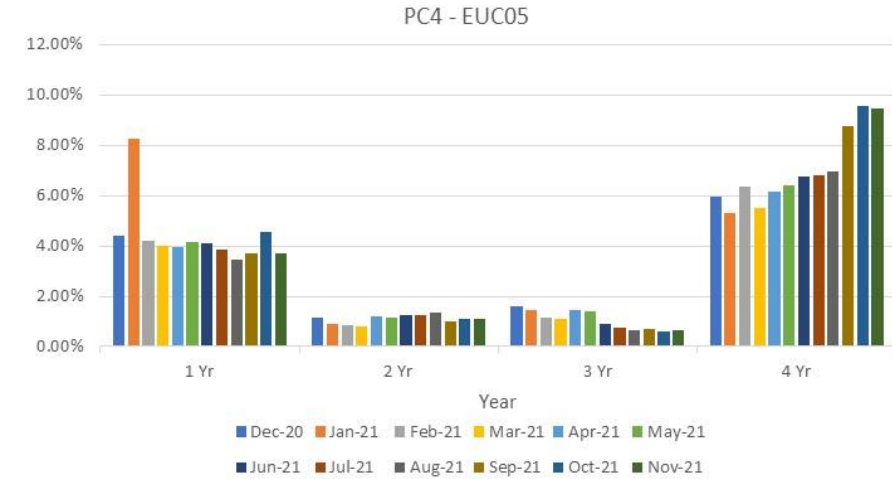
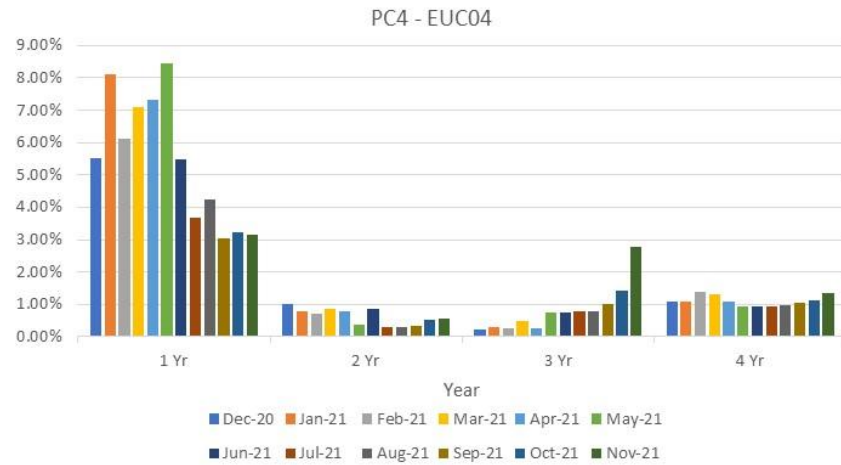
PC3 - EUC08



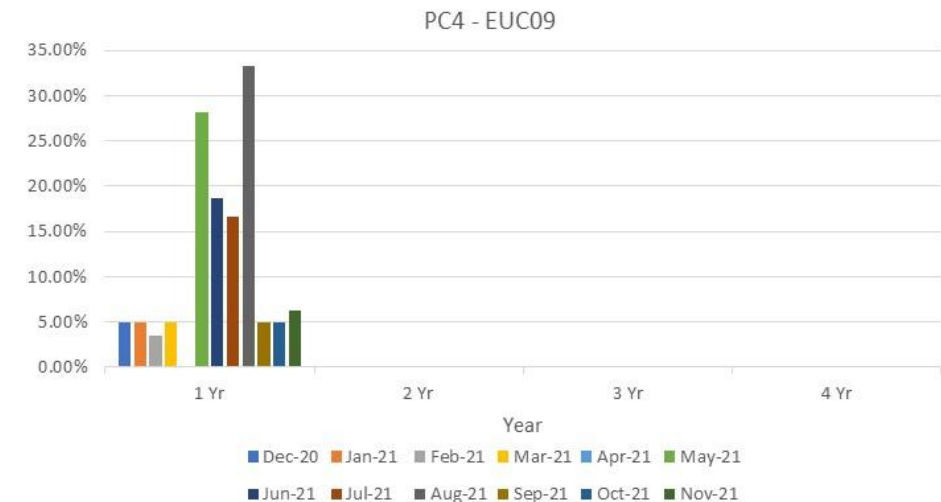
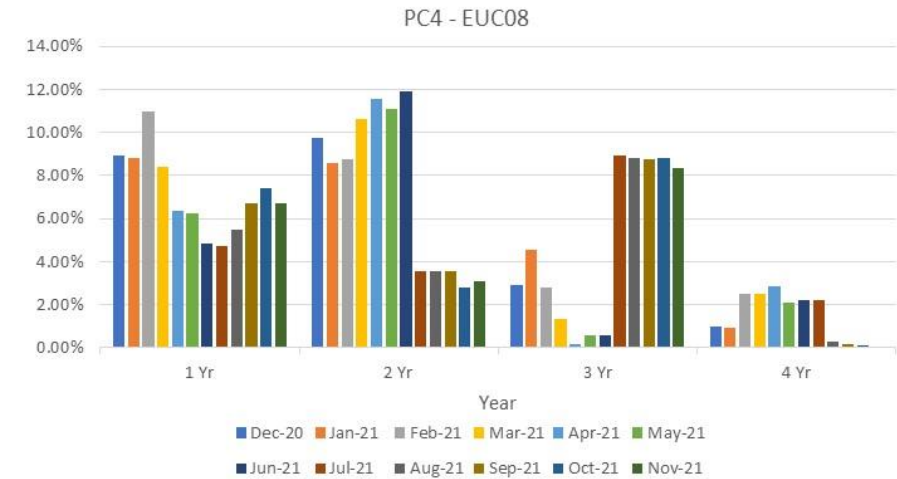
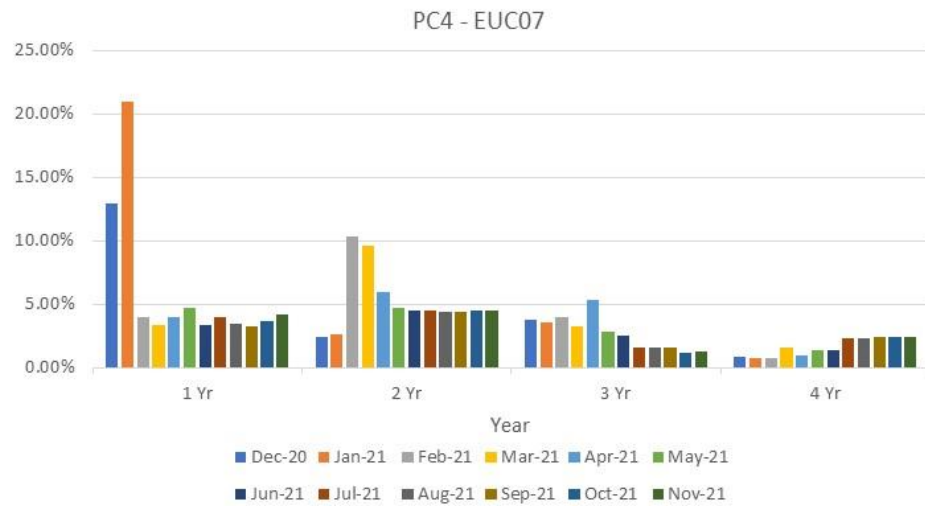
2A.7 No Reads Received for 1, 2, 3 or 4 years – Product Class 4



2A.7 No Reads Received for 1, 2, 3 or 4 years – Product Class 4



2A.7 No Reads Received for 1, 2, 3 or 4 years – Product Class 4



2A.8 AQ Correction by Reason Code

Report measures the count of Shipper Portfolio of MPRNs where AQ Correction process used

Changes in total number of AQ corrections used

Reason Code 01- Confirmed Theft

No Monthly Change
 ↓ 1 Annual Change

Reason Code 02- Change in Consumer Plant

↓ 1078 Monthly Change
 ↑ 215 Annual Change

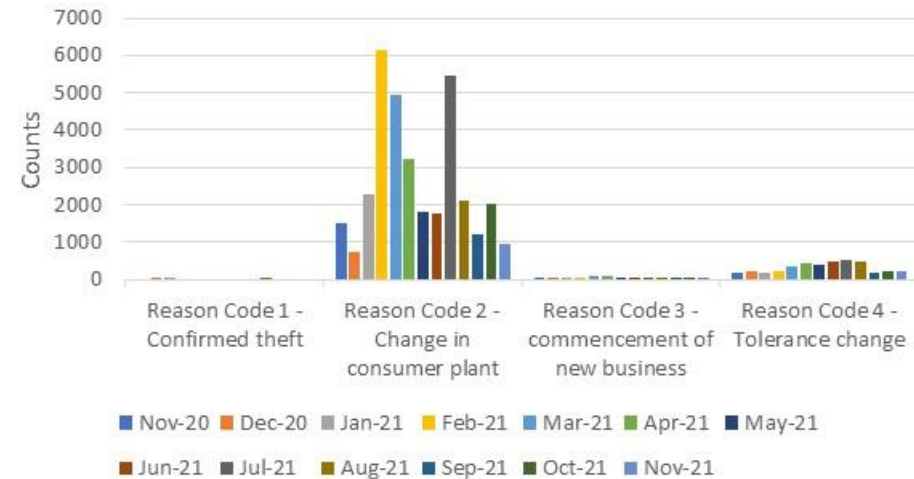
Reason Code 03- Commencement of New Business

↓ 27 Monthly Change
 ↓ 16 Annual Change

Reason Code 04- Tolerance Change

↑ 8 Monthly Change
 ↑ 23 Annual Change

2A.8 Count of AQ Corrections used by reason code



Observations:

- The AQ corrections under “change in consumer plant” have been reducing over recent months but a sharp increase occurred in July 2021 – a result of two Shippers performing increased numbers of AQ Corrections. Since then, AQ corrections have been declining.
- The PAFA will continue to closely monitor this area, particularly with the development of modification of “Modification 0783R – Review of the AQ correction process”.

2A.9 Standard CF AQ > 732,000 kWh

Report measures the count of sites with an AQ>732,000 kWh, but having a standard correct factor

EUC04

↑ 30 Monthly Change
 ↑ 48 Annual Change

EUC07

No Monthly Change
 No Annual Change

EUC05

No Monthly Change
 ↓ 9 Annual Change

EUC08

No Monthly Change
 ↑ 7 Annual Change

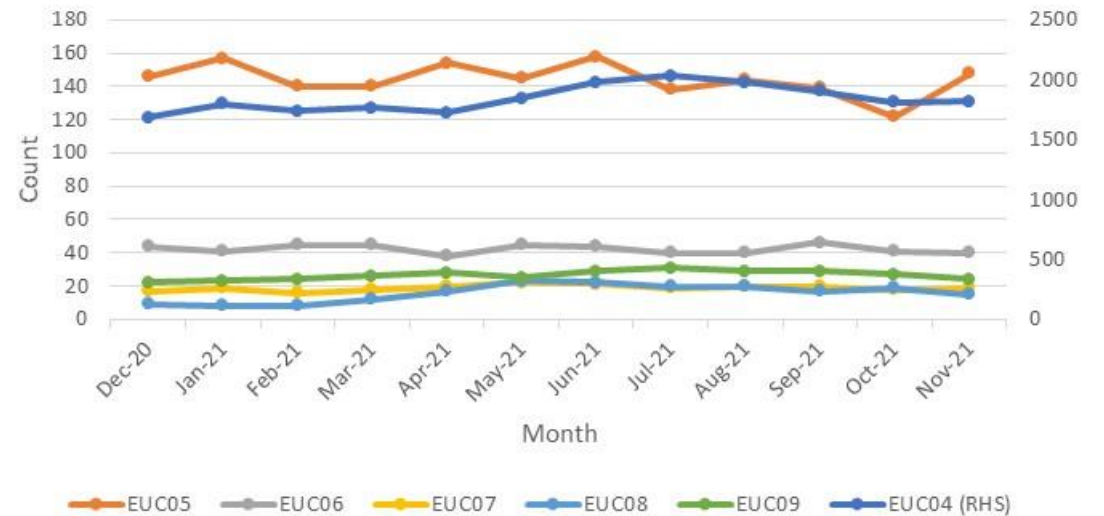
EUC06

No Monthly Change
 ↓ 1 Annual Change

EUC09

↓ 1 Monthly Change
 No Annual Change

2A.9 Count of sites above >732,000 kWh using standard CF



Observations:

- EUC04 continues to have a significantly higher number of standard correction factors incorrectly used compared to other EUC bands.
- Work with the CDSP continues in the area, but PAC are aware of the implementation of UNC681s and the potential impacts on the reports.
- Monitoring will continue.

2A.10 Replaced Meter Reads

Report measures the count of meter reading replacements which results in reconciliation adjustments

EUC01

↓ 919 Monthly Change
 ↑ 24131 Annual Change

EUC02

↓ 232 Monthly Change
 ↓ 82 Annual Change

EUC03

↓ 55 Monthly Change
 ↓ 100 Annual Change

EUC04

↑ 6 Monthly Change
 ↓ 2 Annual Change

EUC05

↑ 8 Monthly Change
 ↑ 4 Annual Change

EUC06

No Monthly Change
 ↑ 1 Annual Change

EUC07

↑ 2 Monthly Change
 ↑ 1 Annual Change

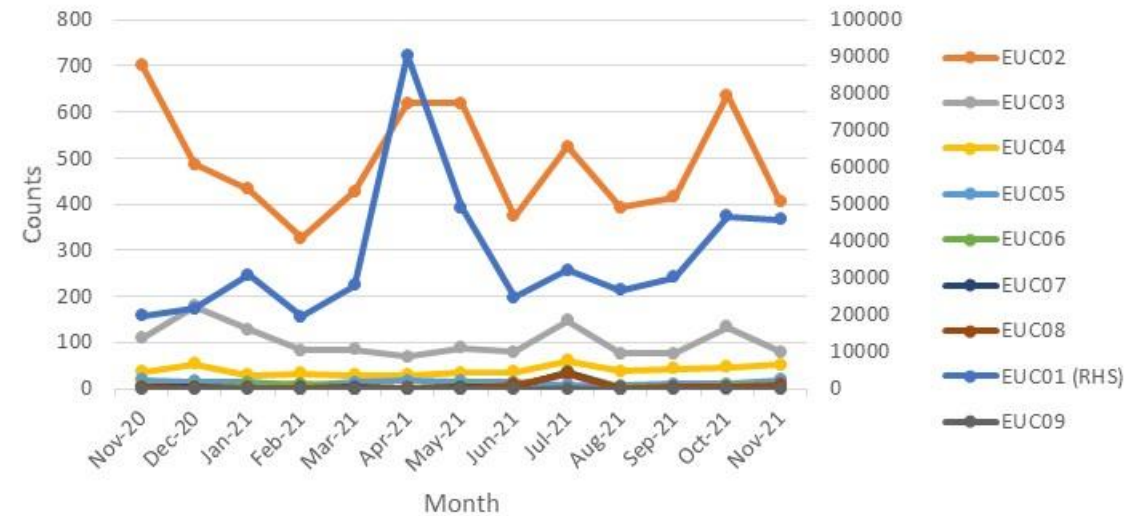
EUC08

↑ 5 Monthly Change
 ↑ 6 Annual Change

EUC09

No Monthly or Annual Change

2B.10 Count of meter reading replaced by EUC



Observations:

- Work with the CDSP has enabled the PAC to identify that in general, the spikes are due to Shipper’s cleansing their portfolio.
- The number of replaced meter reads has generally been trending downwards across all EUC bands over the last few months.



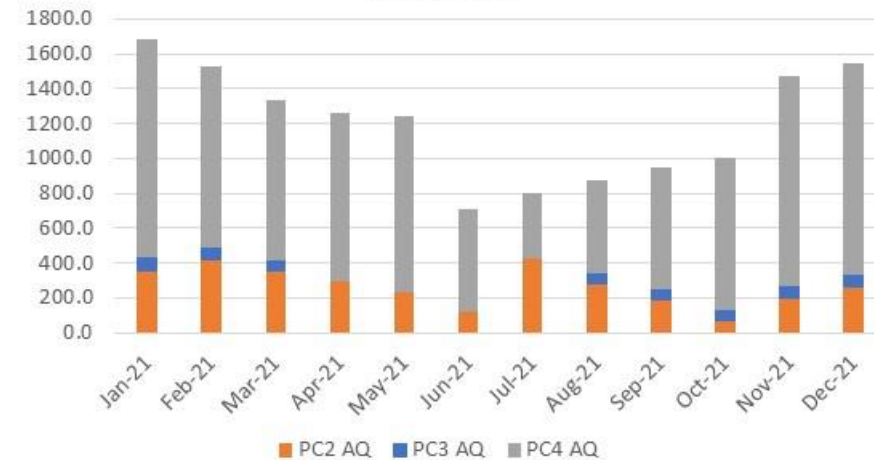
2A.11 Sites above Class 1 threshold not in Class 1

The report measures the number of sites meeting or approaching or have reached the criteria for re-confirmation as Class 1 as set out in UNC G2.3.15b

Supply points above the Class 1 threshold



Total AQ (gWh) of supply points above Class 1 threshold



Observations:

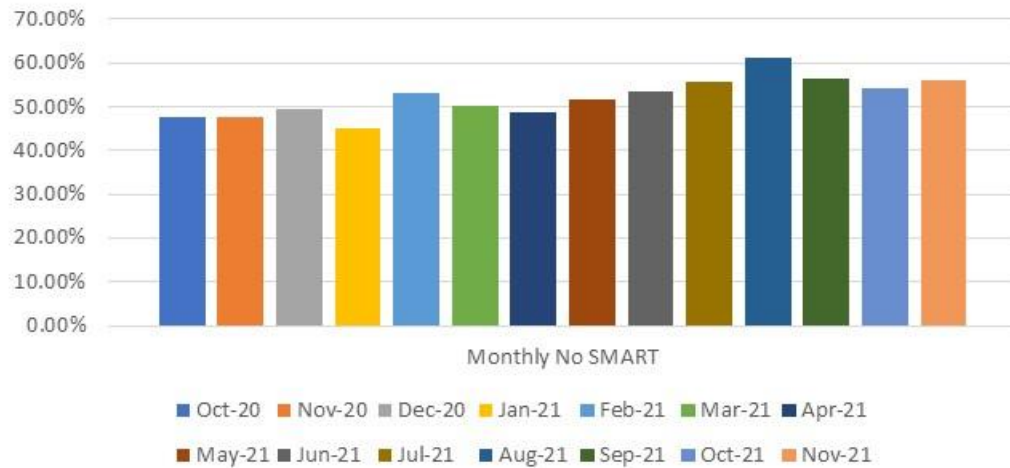
- Number of sites above the class 1 threshold has halved since the beginning of the reporting period – PC4 has the largest number of sites that require reclassifying. Only Shipper has been reclassifying sites, none have been completed by CDSP.
- Total AQ of these supply points has declined as a result.



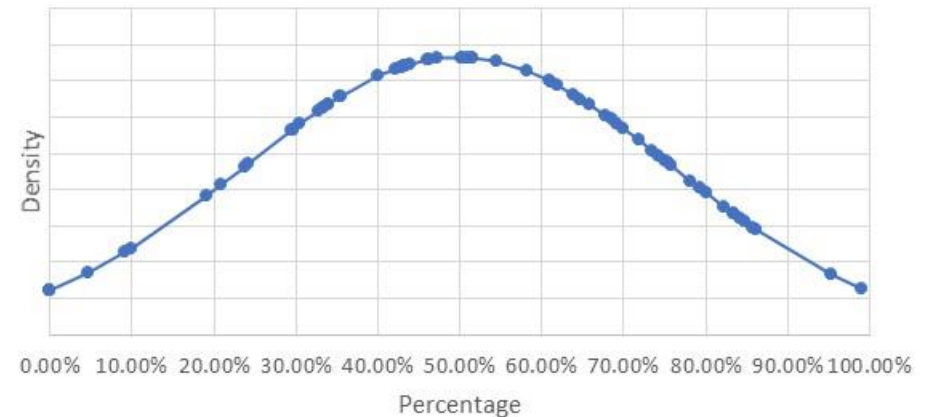
2A.12a AQ Read performance – PC4 Monthly no SMART

The report measures the percentage of PC4 monthly read AQ for sites without a SMART meter with an AQ \geq 293000 kWh.

2A.12 AQ at Risk - Monthly no SMART industry average



2A.12a Distribution of AQ read performance for PC4 Monthly sites no SMART - 12 month average



Observations:

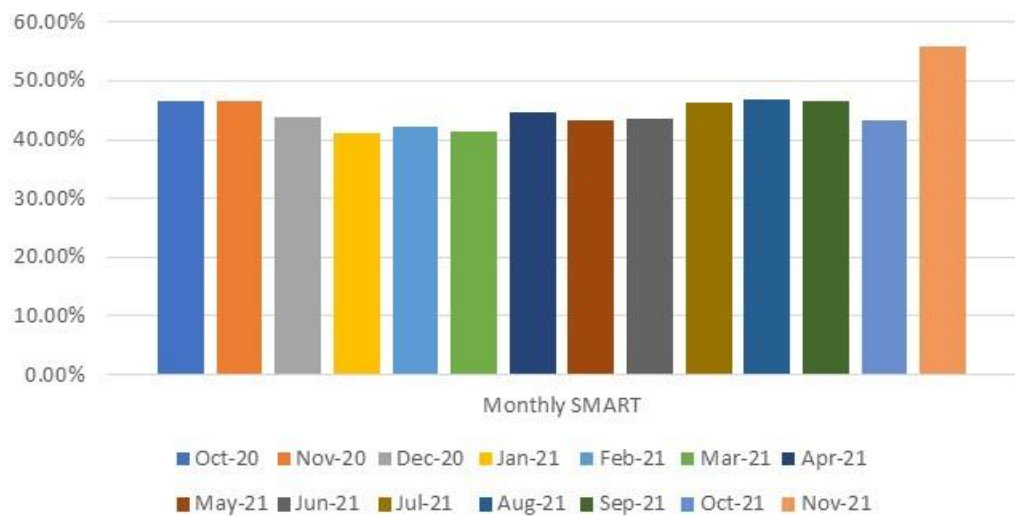
- Industry average remains below target of 90%
 - A number of Shippers are operating below target (based on 12 month average).
- Following the issue of performance improvement letters in the PC4 monthly market, the expectation is that the measure will improve over the coming months. PAFA will continue to work with Shippers and CDSP in this area.

2A.12b AQ Read performance – PC4 Monthly SMART

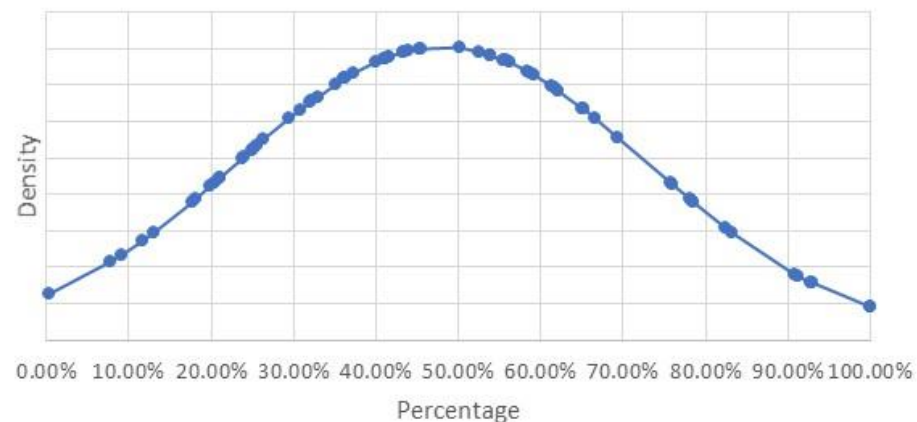


The report measures the percentage of monthly read AQ for sites <293,000 with SMART/AMR

2A.12 AQ at Risk - Monthly SMART industry average



2A.12b Distribution of AQ read performance for PC4 Monthly sites <293,000kWh SMART - 12 month average



Observations:

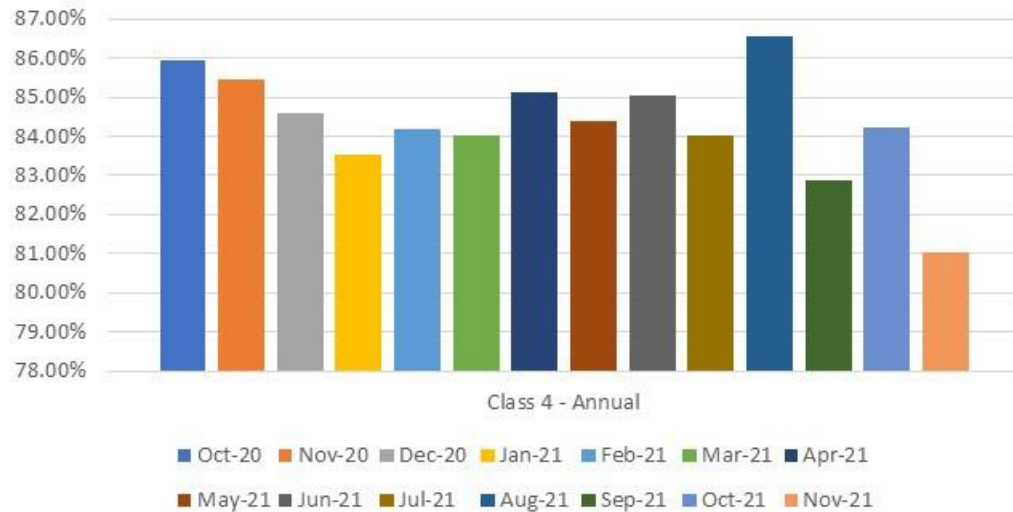
- Industry performance within the PC4 monthly SMART for sites with AQ>293000 kWh has improved over recent months, though the majority of Shippers are performing below industry requirement.
- PAFA will continue to work with Shippers and CDSP to improve performance within this area.



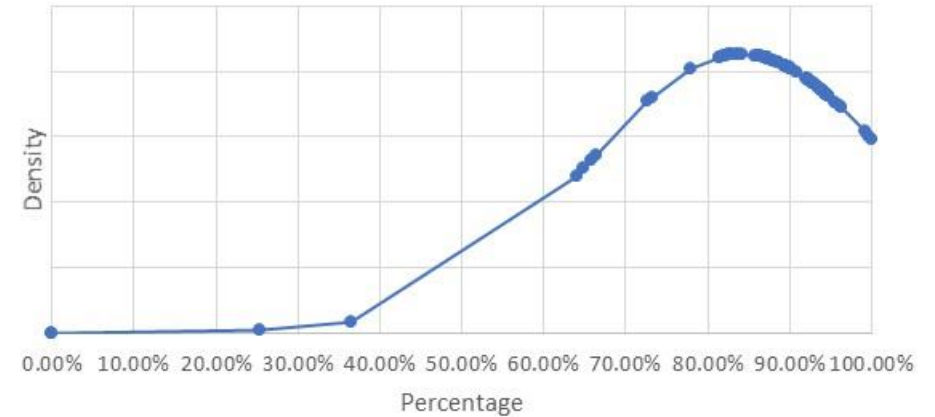
2A.12c AQ Read performance – PC4 Annual

The report measures the percentage of annually read AQ for sites <293,000 with no SMART/AMR

2A.12 AQ at Risk - Annual read industry average



2A.12c Distribution of AQ read performance for PC4 Annual sites -12 month average



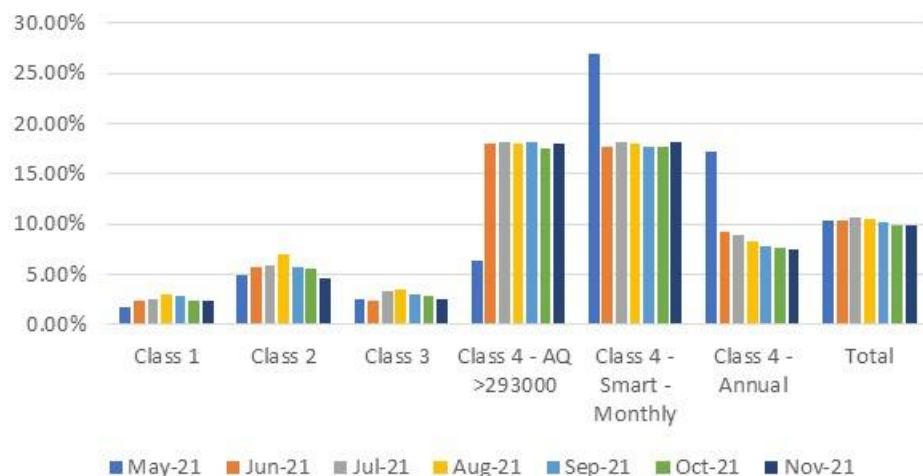
Observations:

- Performance within this market over the last 12 months is on average (c. 85%) higher than the PC4 monthly SMART (c. 45%) and PC4 monthly no SMART (c. 51%).
- There are three Shippers which are performing outside of the industry average, with a significant number of Shippers operating above the 90% requirement.

2A.13 AQ at Risk

The report measures the percentage of Annual Quantity within each product class without a meter reading for the required duration as set out in the UNC.

2A.13 AQ at Risk - Product Class split



Observations:

- The majority of the AQ at risk sits within the PC4 market.
 - Whilst there have been declines in the PC4 Monthly SMART and PC4 Annual market, Class 4 >293000 have seen increases.
- PAFA continue to work with poorly performing Shippers to submit meter readings and reduce the volume of AQ at Risk.

Shippers with the highest percentage of AQ at Risk within their portfolio in November 2021:

Product Class 1

Valletta 4.57%
Papeete 7.36%
Philipsburg 15.34%

Product Class 2

Saipan 12.06%
Rome 15.00%
Tehran 100%

Product Class 3

Reykjavik 35.78%
Yerevan 73.26%
Oranjestad 100%

Product Class 4 – AQ>293000

Gaborone 82.32%
Beirut 82.45%
Maputo 100%

Product Class 4 – Monthly SMART

Baghdad 82.89%
Luxembourg 100%
Willemstad 100%

Product Class 4 - Annual

Sarajevo 65.65%
Maputo 75.76%
Bamako 100%

Appendix – PARR report details



Sr No	Topic	Details	Split By	12 Rolling Months	Format	e.g. For Nov Report	Condition	Comments
1	2A - Estimated & Check Reads used for Gas Allocation, and consumption adjustments for Product Classes 1 & 2	<p>Need to count everyday portfolio and count mprn where read has been estimated and no actual present on the same day .</p> <p>Check Read : For check reads we would need to check , as of reporting day how many class 1 & 2 MPRNs are present with DRE/AMR.</p> <p>For those MPRNs we have site visit read <=14 months and no subsequent site visit read . Those are outstanding ones per shipper.</p>	Class	Annual	Percentage	September	M-2	
2	2A - No Meter Recorded in the Supply Point Register	AQ Band wise , AQ band based on report run day . Class wise different table And AQ Band. Exclude NTS connected Sites & Telemeterd. Exiting SHPK - Topic - Confirmed No Asset Report	Class	Annual	Count & B - Percentage	Nov	M	
3	No Meter Recorded in the Supply Point Register and data flows received by Xoserve	Same as above but additionally need to check if for above MPRNs any Data Flow Means - > Asset Update , C & D Store & Reads received in that month	Class	Annual	Count & B - Percentage	Additional MPRNs		
4	2A - Shipper Transfer Read Performance	M-2 is considered – Open OPNT_REQ_FOLL_CON OPNT_RECEIVED_10	Class	Annual	Percentage	September	M-2	
5	Read Performance	As per frequency we need to check if we have received the read e.g. month read site will check if we have received the read in month .Class and shipper transfer are excluded .6 Monthly read site need to consider yearly ,it is not in UNC. It will be like MUR logic M-2 , exclude sites where class changes happened in M-2 , shipper changes	Class		Percentage	September	M-2	

Appendix – PARR report details



Sr No	Topic	Details	Split By	12 Rolling Months	Format	e.g. For Nov Report	Condition	Comments
6	2A - Meter Read Validity Monitoring	<p>MRE01026 :Reading breached the lower Outer tolerance. MRE01027 :Reading breached the Upper Outer tolerance. MRE01028 :Reading breached the lower Inner tolerance value and no override flag provided. MRE01029 :Reading breached the upper Inner tolerance value and no override flag provided. MRE01030 :Override tolerance passed and override flag provided</p> <p>We can build this from DUK_ARSR , by checking failed reads . DUK_READ = We can get how many successfull reads received based on Status =U . Failed once are with status =F</p>	Reason Codes		Percentage	October	M-1	
7	No reads received for 1,2,3 or 4 years (excludeds estimated	<p>Per class table , per AQ Band ,Need to ignore estimates for all classed Logic is similar to existing SHPK Logic - NO_READ_2Y_3Y_B73200 Here we would need to create 4 counts No reads received for 1 , 2 , 3 , 4 years sepeartely as per layout</p>	AQ Band	Annual	Percentage	Nov	M	
8	2A - AQ Corrections	<p>AQ correction by reason code : Switch Type = 50 , Switch View = 50 , Switch status = LI Reason code per table , Reason code is new field added in ISU BW - DS OUC_SWTDOC Switch Document new field added in DS - ZZ_AQ_REASON</p>	AQ Band	Annual	count	October	M-1	
9	2A - Standard Correction Factors for sites with AQ > 732, MWH	<p>Standard correction factor by AQ Band Count of meter points where replacement reads received by AQ Band ,only for class 3& 4 ,</p>	AQ Band	Annual		Nov	M	Report should only include AQs above 732000. Currently including >=732000
10	2A - Replaced Meter Reads	<p>Replaced meter reads are identified with DUK_READ where read reason = R , Upload Status = U , we would need to add AQ Band either in DUK_READ or consider while processing</p>	AQ Band	Annual		October	M-1	

PAFA@Gemserv.com

