

# PARR Dashboards

---

15<sup>th</sup> June 2021

PAFA



# 2A.1 Estimated & Check Reads - Product Classes 1 & 2



Report measures the percentage of each shippers portfolio where estimated reads were provided. Count of each shippers portfolio where check reads were not provided

## PC1

### Industry movement:

- ↓ 1.86% - Monthly change
- ↑ 9.48% - Annual change

### Monthly changes:

- ↑ 14.57% Tehran
- ↑ 19.35% Monaco
- ↑ 43.33% Praia
- ↓ 1.62% Brazzaville
- ↓ 5.04% Thimphu
- ↓ 100% Manama

## PC2

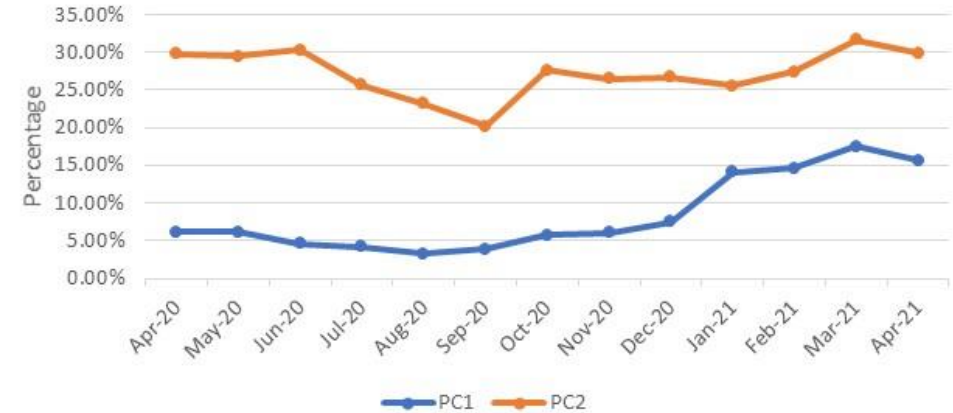
### Industry movement:

- ↑ 0.30% Monthly change
- ↓ 2.09% Annual change

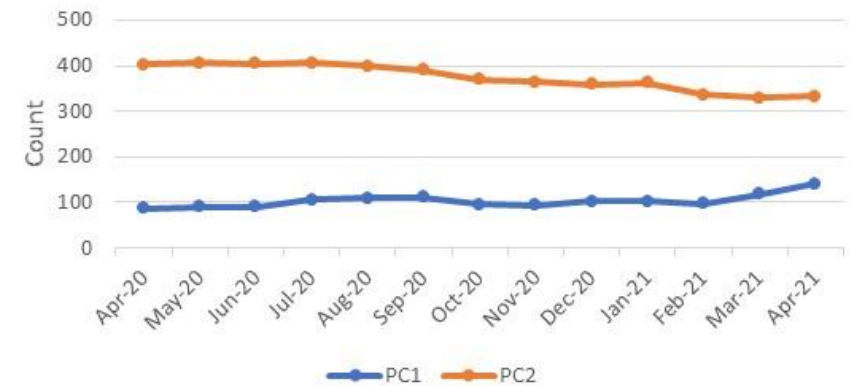
### Monthly changes:

- ↑ 3.48% Brazzaville
- ↑ 40.16% Saipan
- ↑ 43.44% Manama
- ↓ 21.35% Thimphu
- ↓ 22.74% Praia
- ↓ 23.92% Reykjavik

2A.1 Percentage of Estimated Reads for PC1 & PC2



2A.1 Count of Check Reads not completed for PC1 and PC2



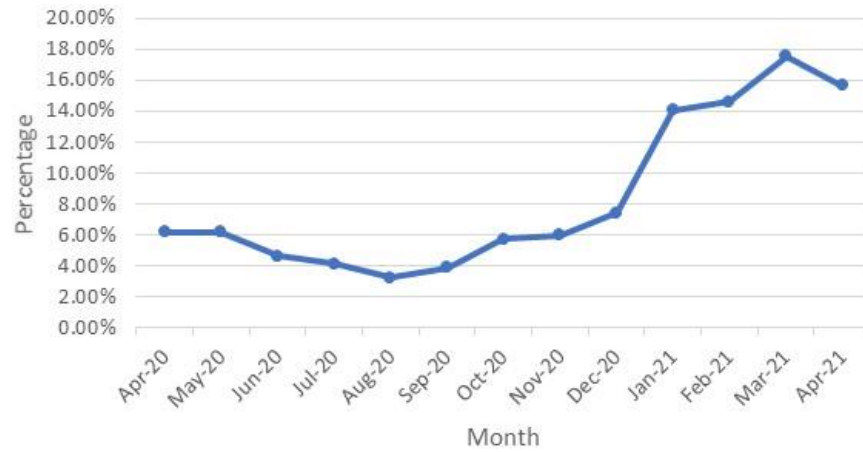
### Observations:

- Estimated reads have increased for both PC1 and PC2 over recent months
  - PC1 has seen increased estimated reads due to additional Shippers joining the market. Most recent month (March) has seen existing Shipper struggle to submit accepted reads.
  - PC2 has worsened due to one particular Shipper having issues, PAFA are working with Shipper and CAM on resolving issue.
- The number of uncompleted check reads has stabilised for both PC1 and PC2, though there has been a slight rise for those Shippers in PC1.

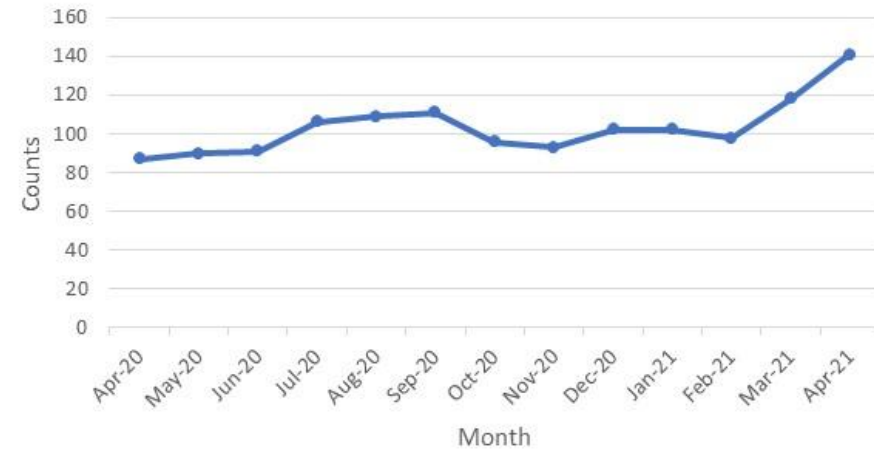
# 2A.1 Estimated & Check Reads - Product Classes 1 & 2



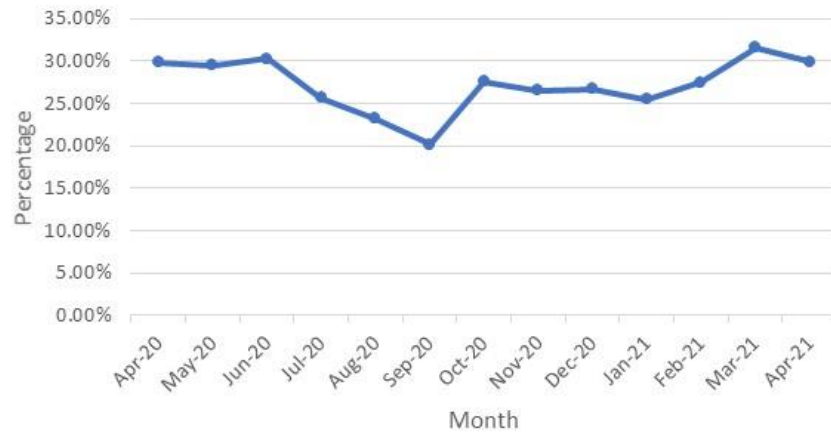
2A.1 PC1 Estimated Read Totals



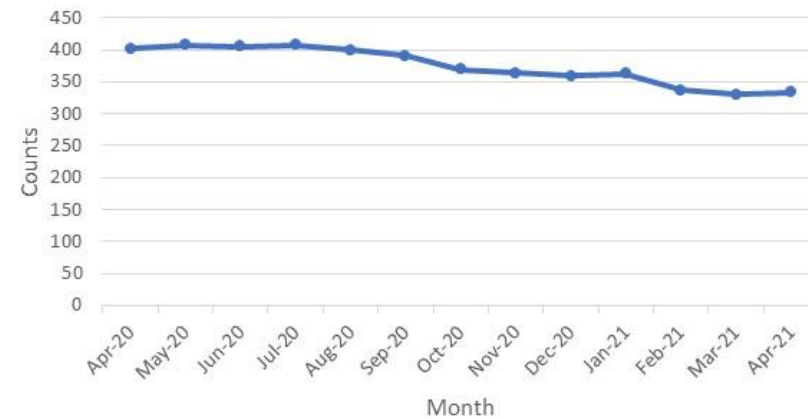
2A.1 PC1 Check Reads Total



2A.1 PC2 Estimated Read Totals



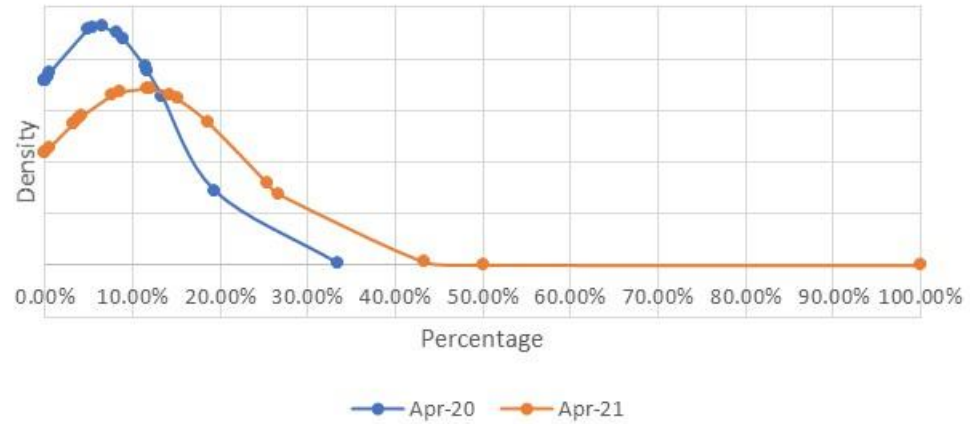
2A.1 PC2 Check Read Totals



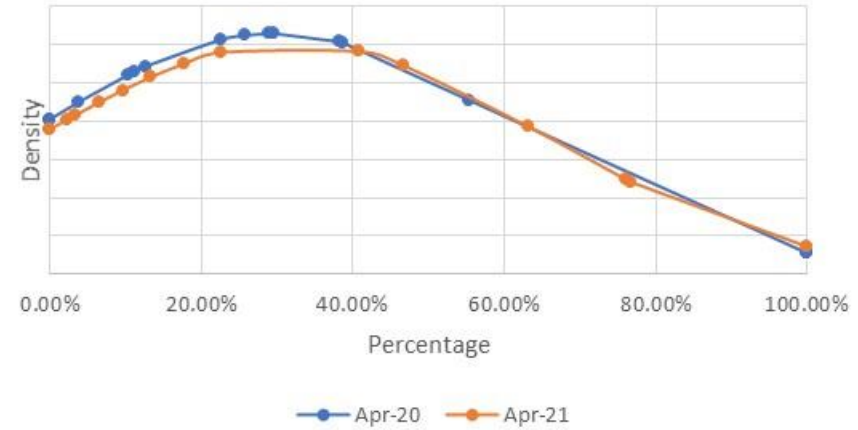
# 2A.1 Estimated & Check Reads - Product Classes 1 & 2



2A.1- 12 Month comparison (Average of PC1 Estimated Reads)



2A.1- 12 month comparison (Average of PC2 Estimated Reads)



# 2A.2 – No Meter Recorded



Report measures the percentage of each shippers portfolio where no meter recorded in the supply point register

### PC1

0% for all shippers

### PC2

0% for all shippers

### PC3

**Highest shippers:**

Roseau **0.20%**

Praia **0.38%**

### PC4

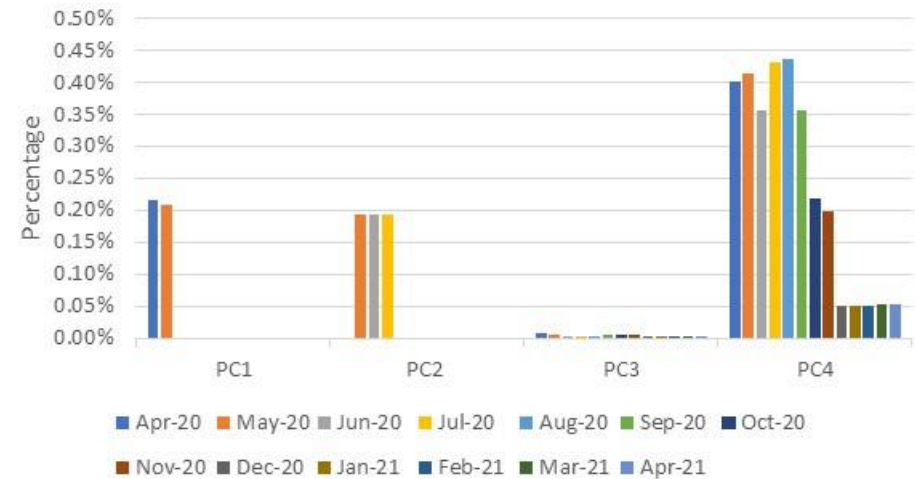
**Highest shippers:**

Bratislava **1.36%**

Luxembourg **2.95%**

Belmopan **4.86%**

2A.2 Percentage of No Meter recorded by Product Class



**Observations:**

- The % of no meter recorded has seen a steady increase since September 2019 in PC4, however, this has declined since October 2020.
- The PAC, PAFA and CAMs at Xoserve are working with the relevant Shippers in this area who are driving the increase in the number of no meters recorded

# 2A.3 No Meter Recorded and data flows received



Report measures the percentage of each shippers portfolio where no meter recorded in the supply point register and data flows received

**PC1 & PC2**  
0% for both product classes

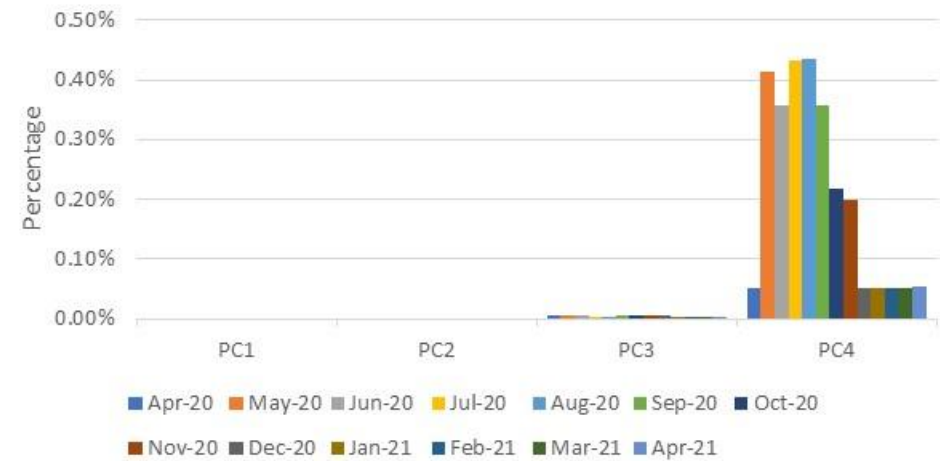
**PC3**

Highest shippers:  
Praia **0.10%**

**PC4**

Highest shippers:  
Thimphu **0.52%**  
Roseau **0.93%**  
Belmopan **1.26%**

2A.3 No Meter recorded by Product Class and data flows received



# 2A.4- Shipper Transfer Read Performance

Report measures the percentage of Shipper portfolio of opening meters reads provided following confirmation

**Industry movement:**

- ↓ 3.74% Monthly change
- ↓ 10.48% Annual change

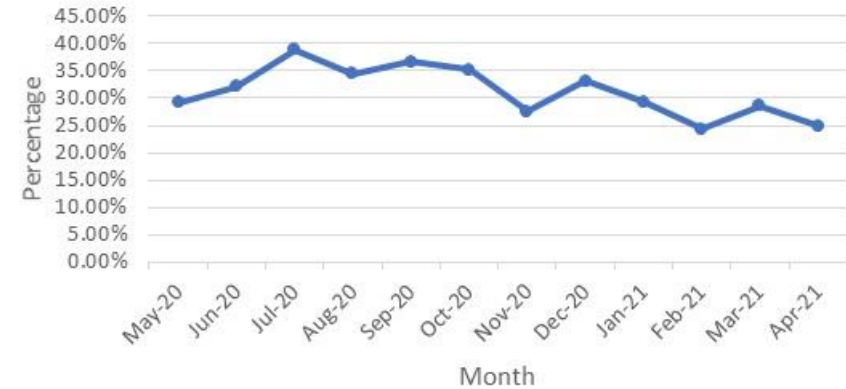
**Observations:**

- The number of transfer reads being submitted within the relevant window are still well below the requirements of the UNC

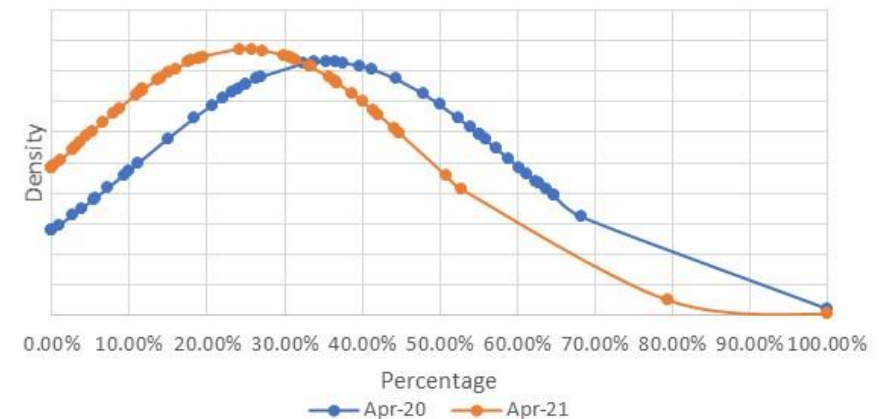
**Recommendations:**

- Continued industry education on obligation to provide opening meter readings following confirmation
- Continue to ask CAMs to maintain focus on this area when speaking to Shippers
- PAC will continue to monitor but will be considering focused Shipper targeting in the coming months

2A.4 Percentage of opening meter reads provided by industry total



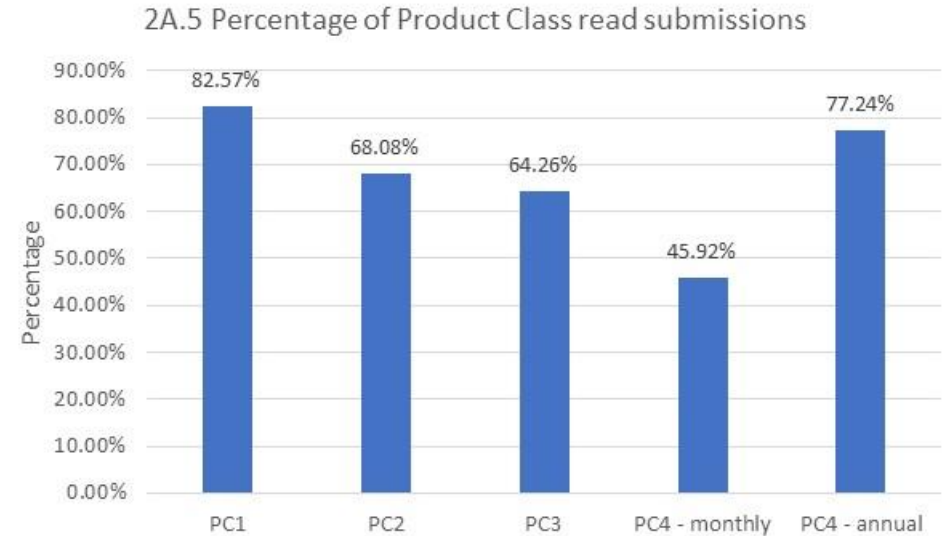
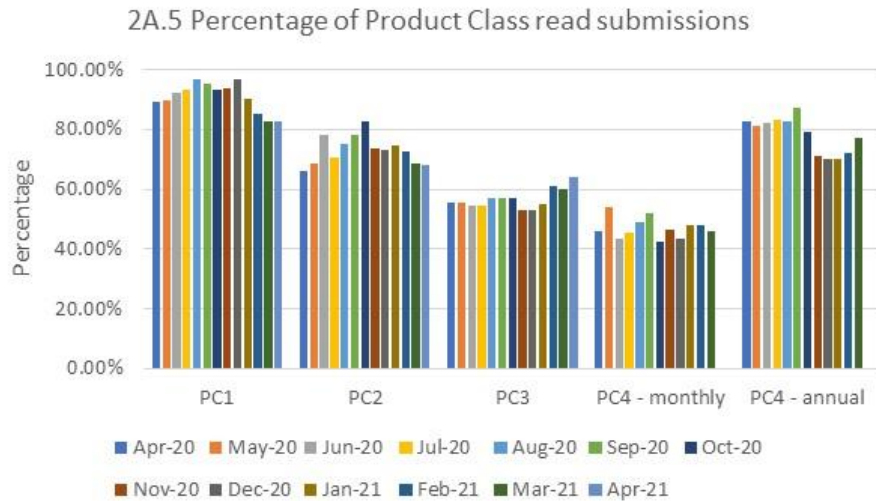
2A.4- 12 Month Comparison of Shipper Transfer Read Performance



# 2A.5- Read Performance

Report measures the average percentage of Shipper portfolio submitting reads in April 2021

PC4 Monthly and Annually read measures the percentage of Shipper portfolio submitting reads in March 2021



### Poorest performing Shippers:

#### PC1

- 0.00% Khartoum
- 50.00% Monaco
- 56.67% Praia

#### PC2

- 0.00% Tehran
- 23.27% Praia
- 23.92% Reykjavik

#### PC3

- 0% Hamilton
- 0% Philipsburg
- 1.67% Bern

#### PC4 (Monthly)

- 0% Bern
- 0% Baghdad
- 0% Castries
- 0% Khartoum
- 0% Kampala
- 0% Monaco
- 0% Tripoli

#### PC4 (Annual)

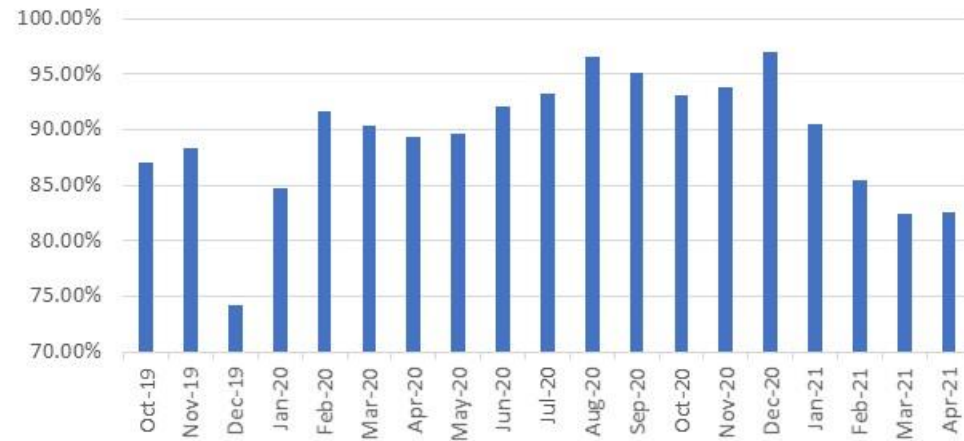
- 0% Alofi
- 0% Marigot
- 0% Yerevan
- 0% Paramaribo



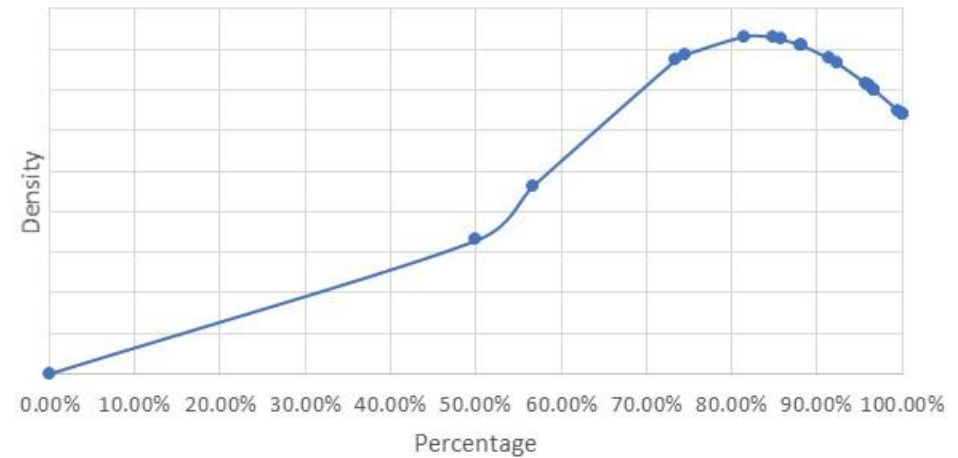
# 2A.5- Read Performance (PC1)



Read Performance - PC1



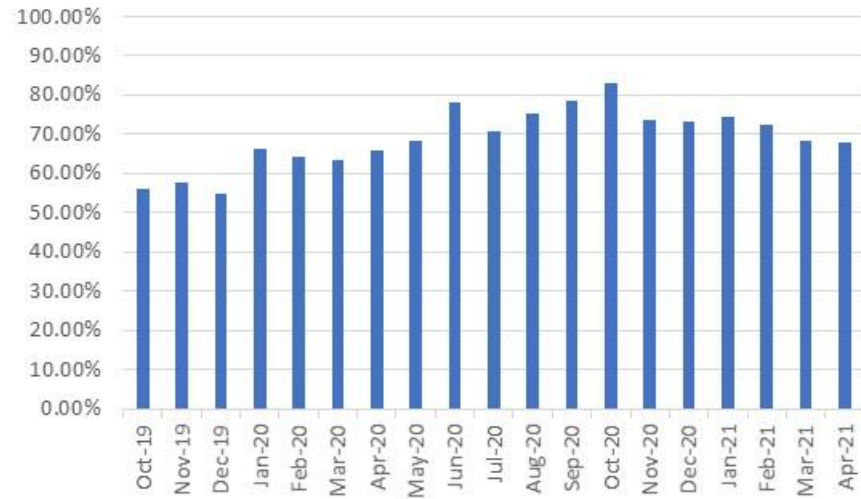
2A.5 Distribution of percentage of PC1 sites providing meter reads



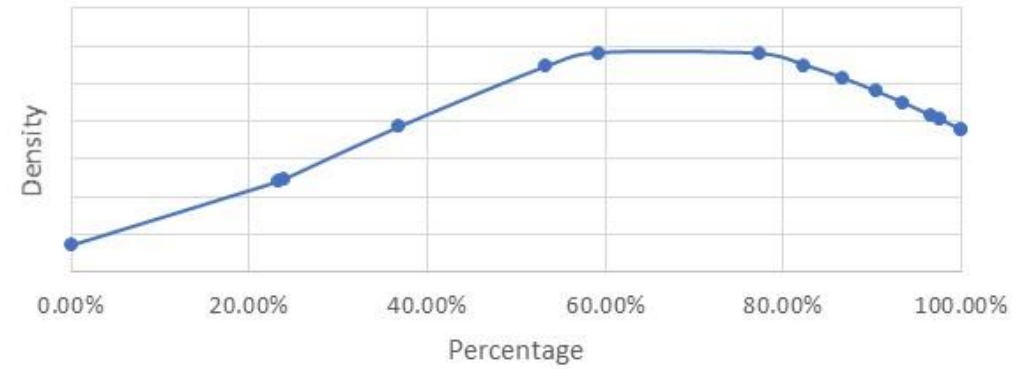
# 2A.5- Read Performance (PC2)



Read Performance - PC2



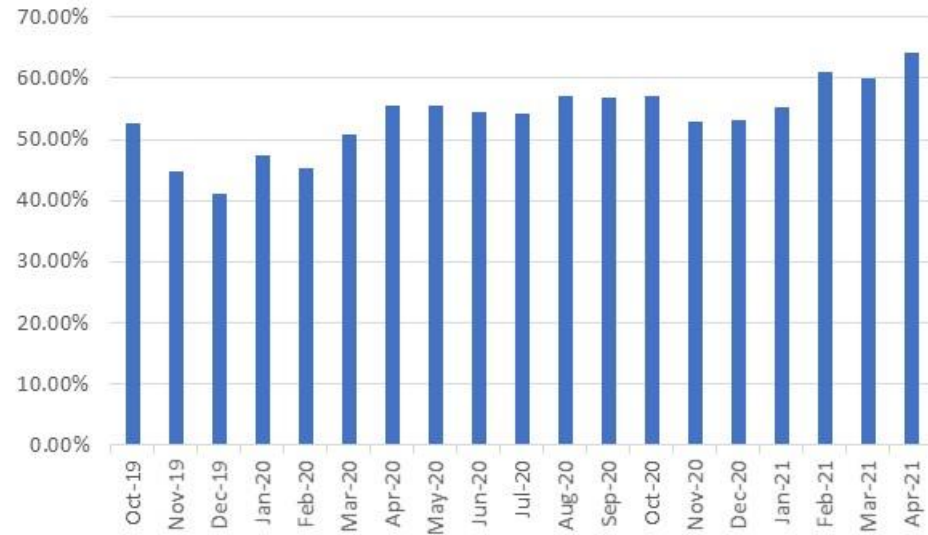
2A.5 Distribution of percentage of PC2 sites providing meter reads



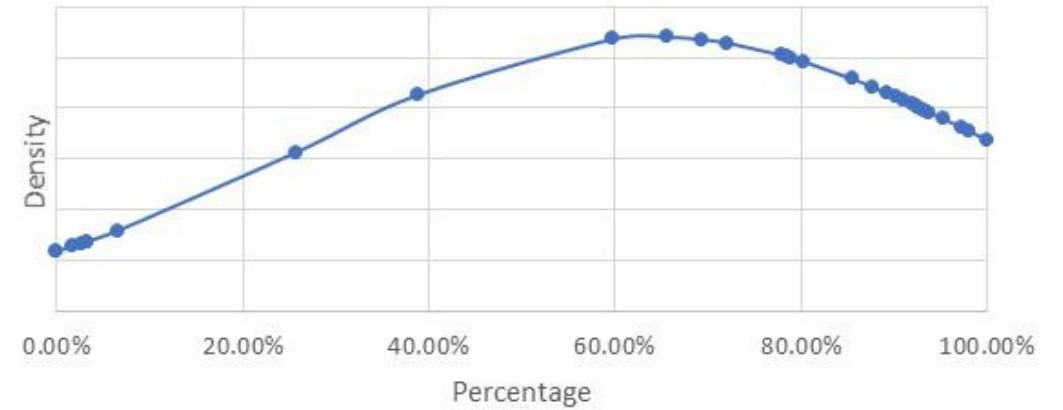
# 2A.5- Read Performance (PC3)



Read Performance - PC3



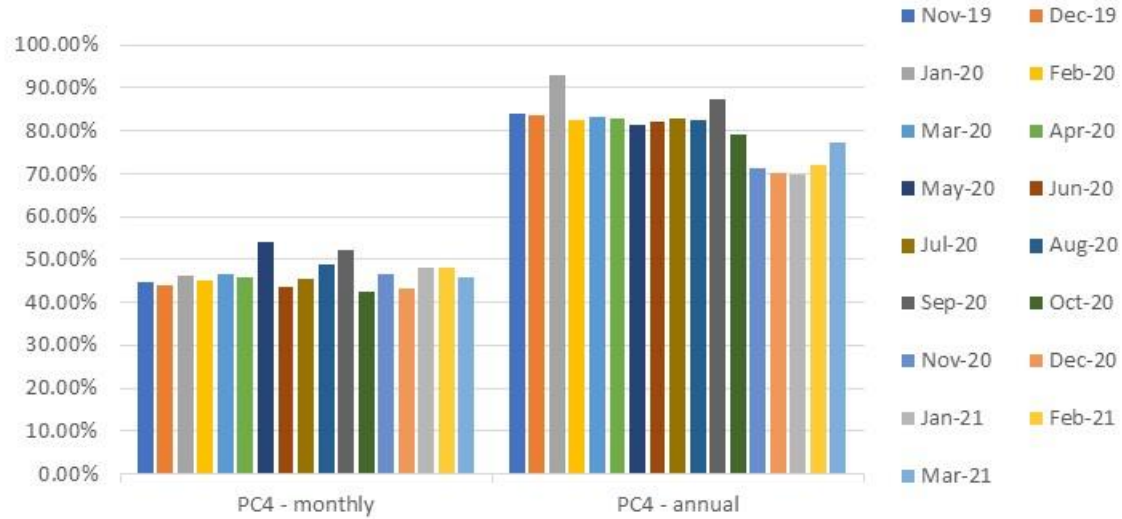
2A.5 Distribution of percentage of PC3 sites providing meter reads



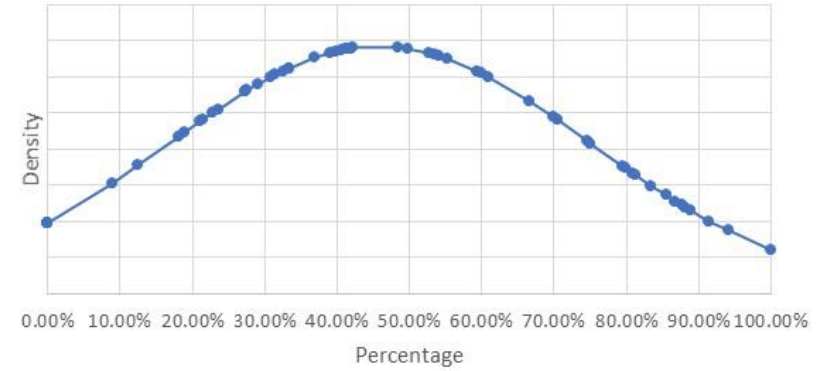
# 2A.5- Read Performance (PC4)



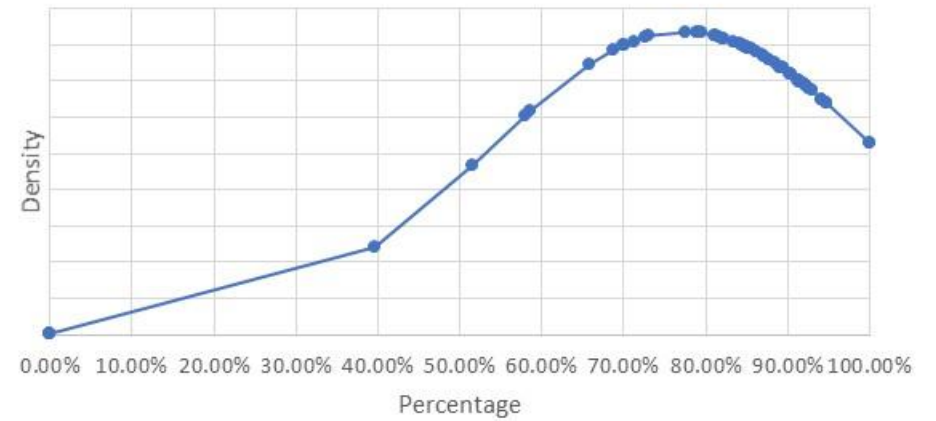
Read Performance - PC4



2A.5 Distribution of read performance for PC4 Monthly sites



2A.5 Distribution of percentage of PC4 Annual sites providing meter reads

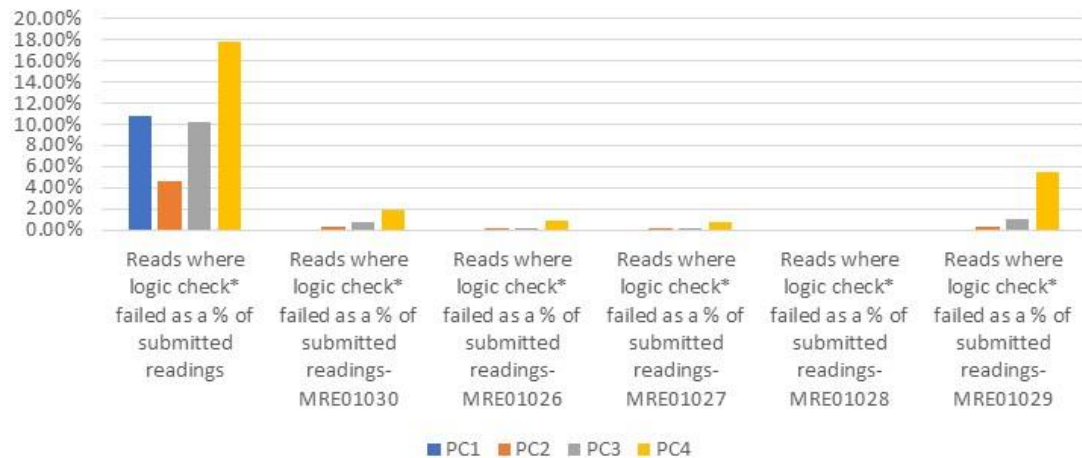


# 2A.6 Meter Read Validity Monitoring



Report measures the percentage of Shipper portfolio where reads submitted failed validation

2A.6 Percentage of meter read validity by Product Class - April 2021



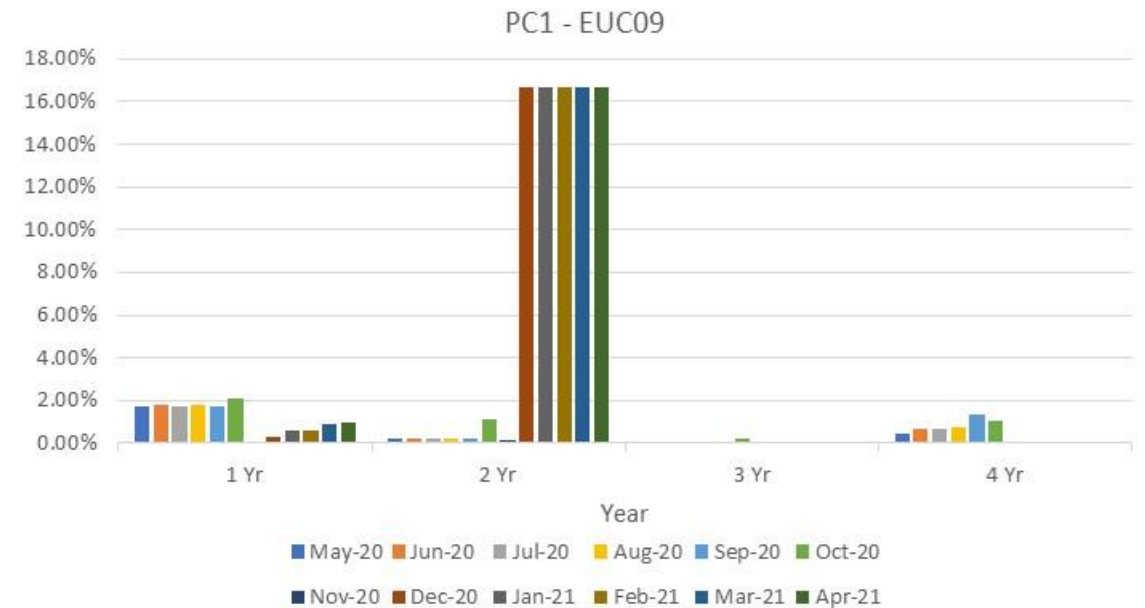
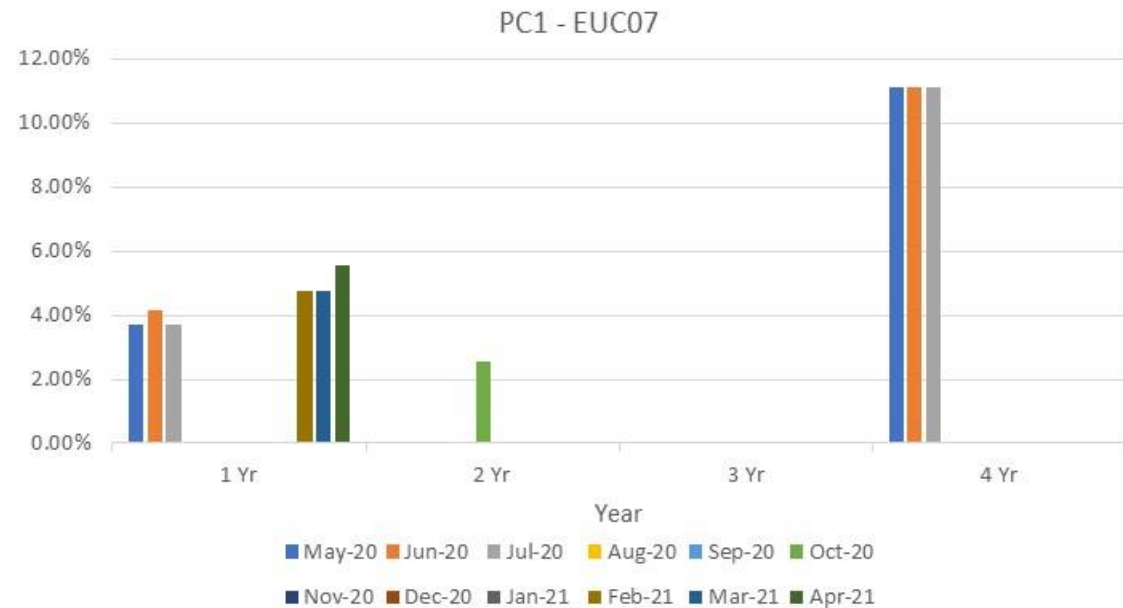
Product Class	Reads where logic check failed as a % of submitted readings	MRE01030	MRE01026	MRE01027	MRE01028	MRE01029
1	Kigali – 60.00%					
2	Washington – 28.07%	Thimphu – 1.60%	Papeete – 0.92%	Philipsburg – 0.46%		Tiraspol – 2.38%
3	Khartoum – 78.57%	Monaco – 15.08%	Islamabad – 1.56%	Roseau – 3.03%		Monaco – 6.08%
4	Bissau – 100.00%	Monaco – 50.00%	Pyongyang – 13.93%	Warsaw – 6.00%		Gitega – 33.18%

# 2A.7 No Reads Received for 1, 2, 3 or 4 years – Product Class 1

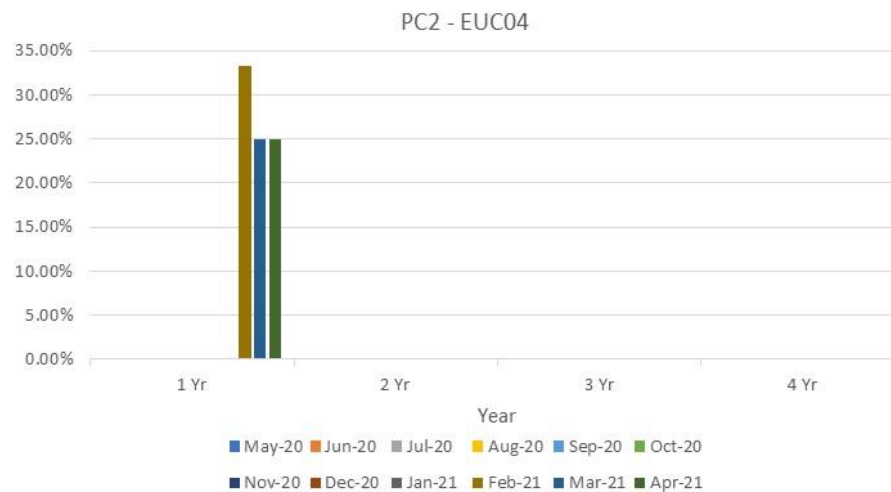
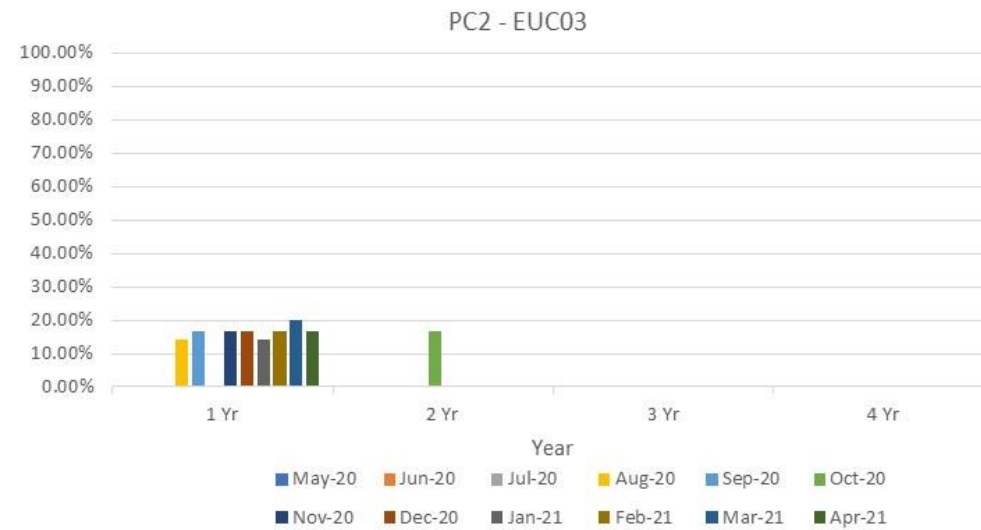
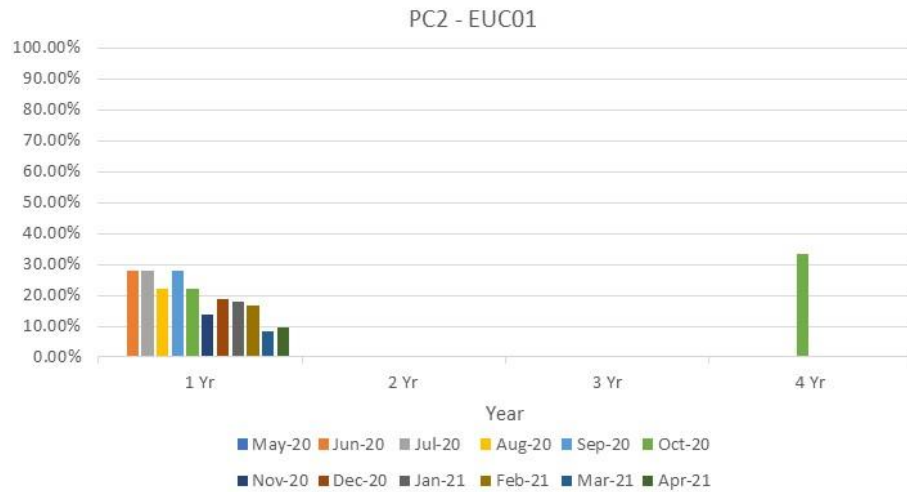


Report measures the percentage of Shipper portfolio in the specified AQ band without a meter reading for the specified period

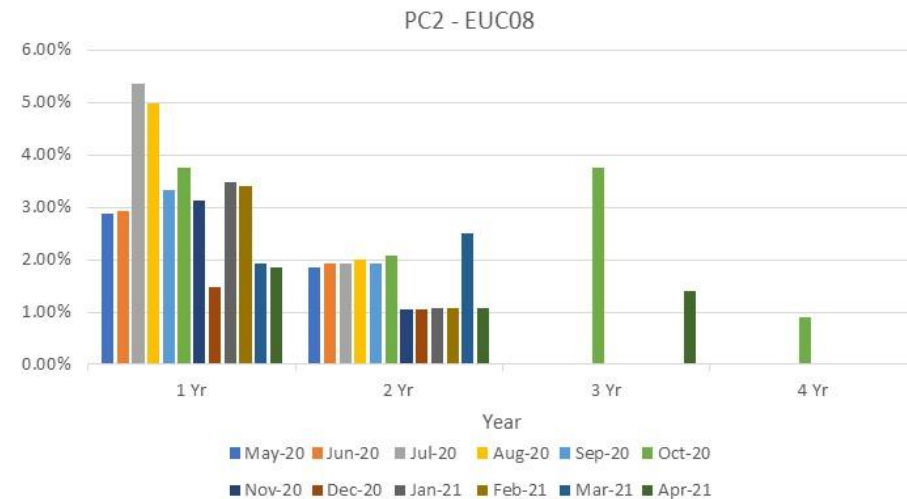
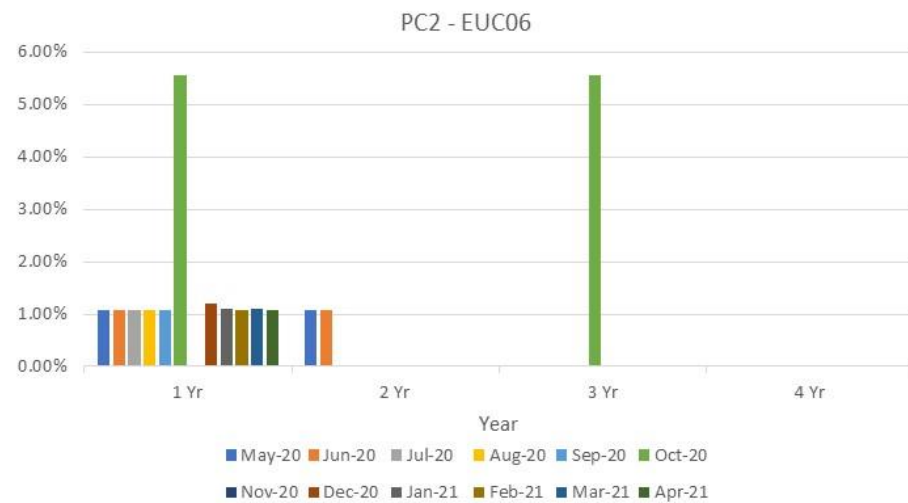
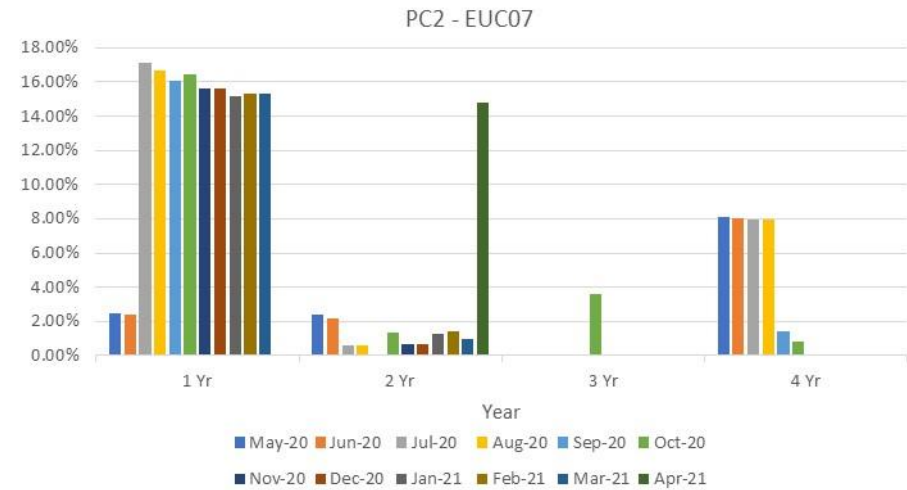
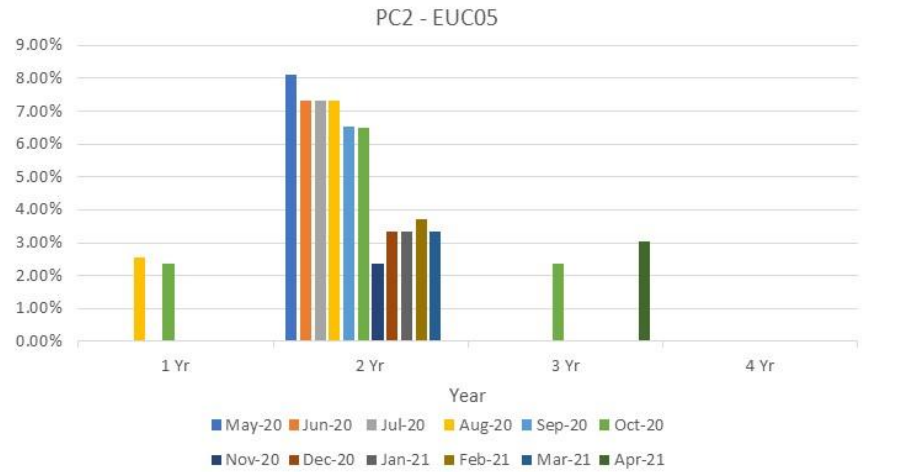
EUC01 – EUC06, EUC08 have no meters which have not been unread for a period less than one year in recent months



# 2A.7 No Reads Received for 1, 2, 3 or 4 years – Product Class 2

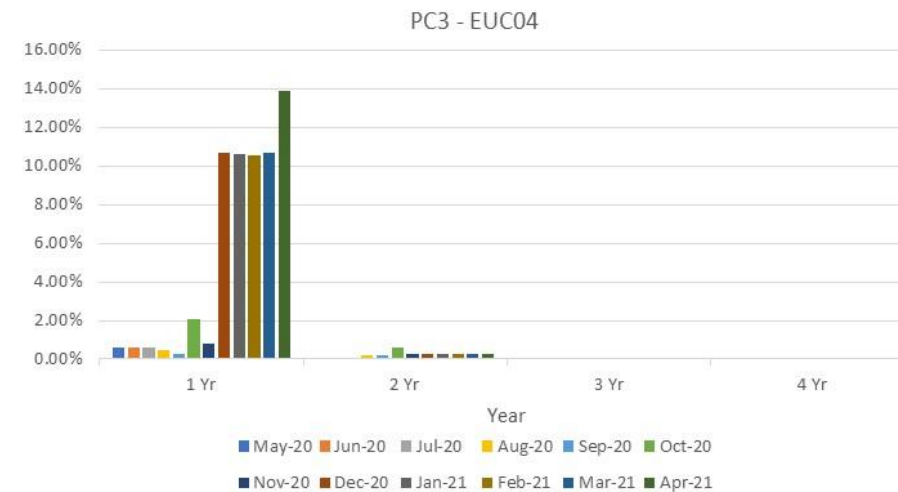
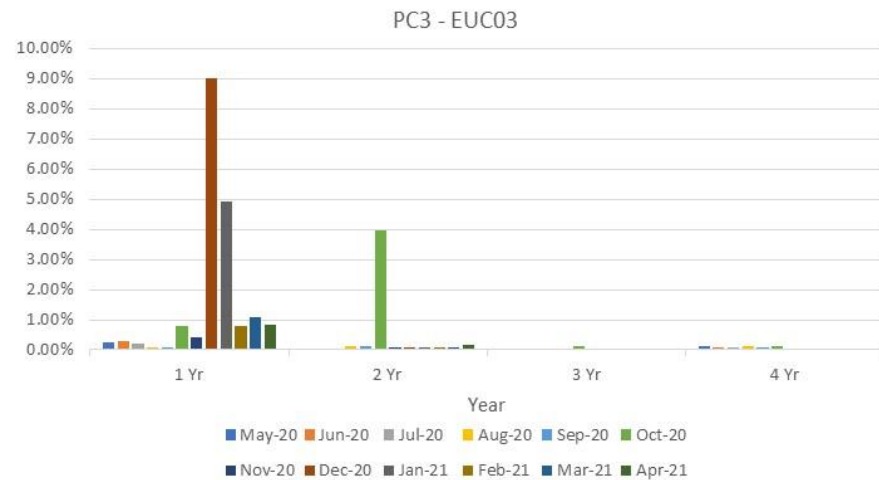
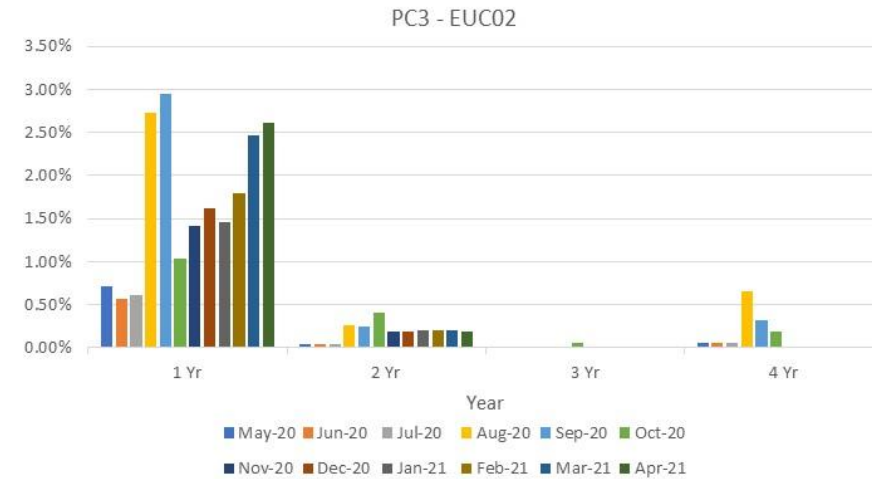
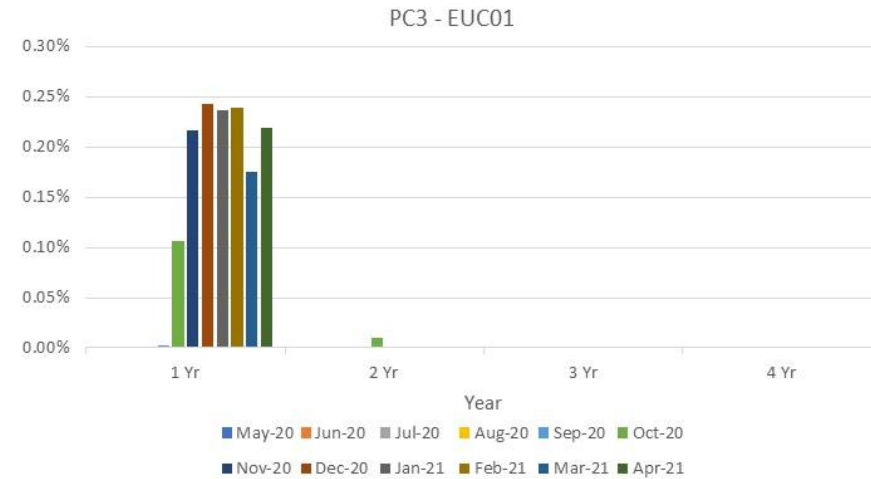


# 2A.7 No Reads Received for 1, 2, 3 or 4 years – Product Class 2

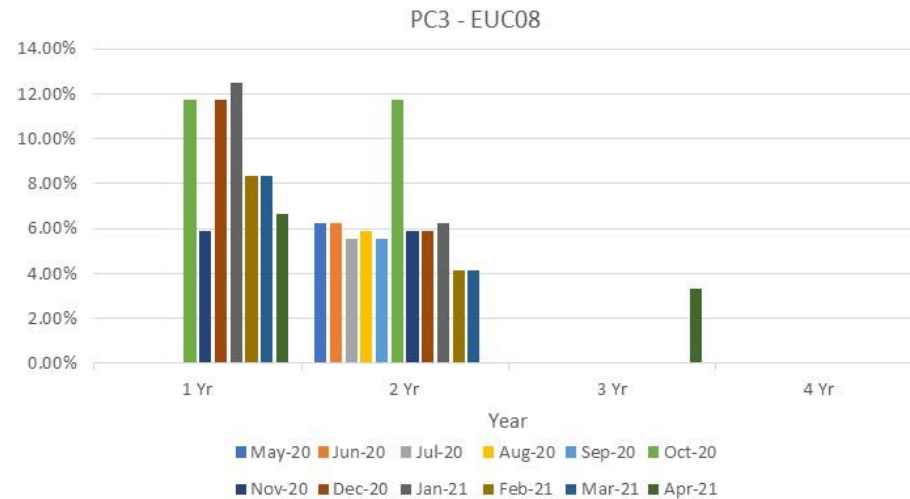
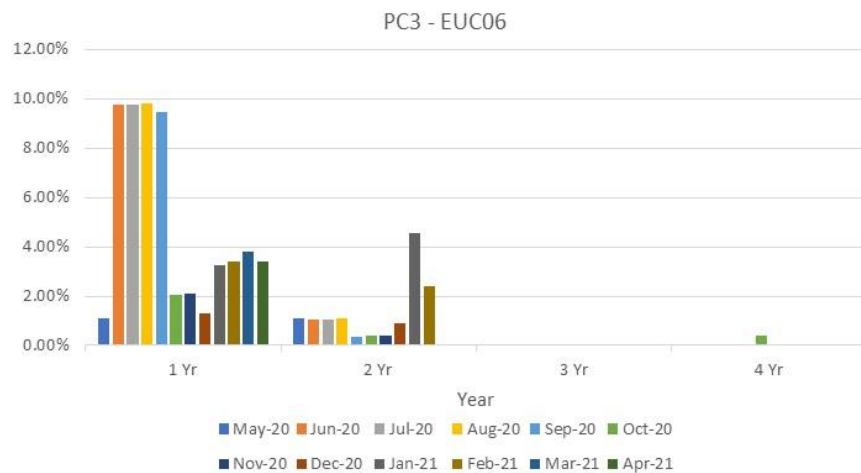
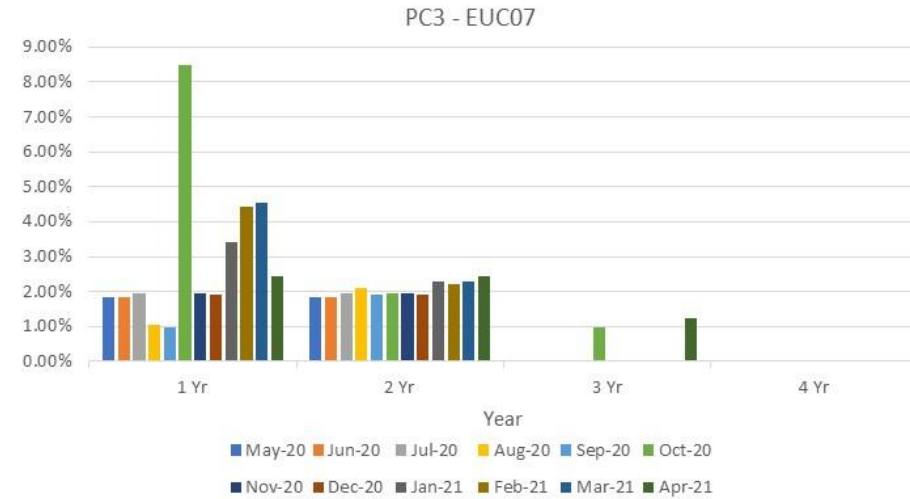
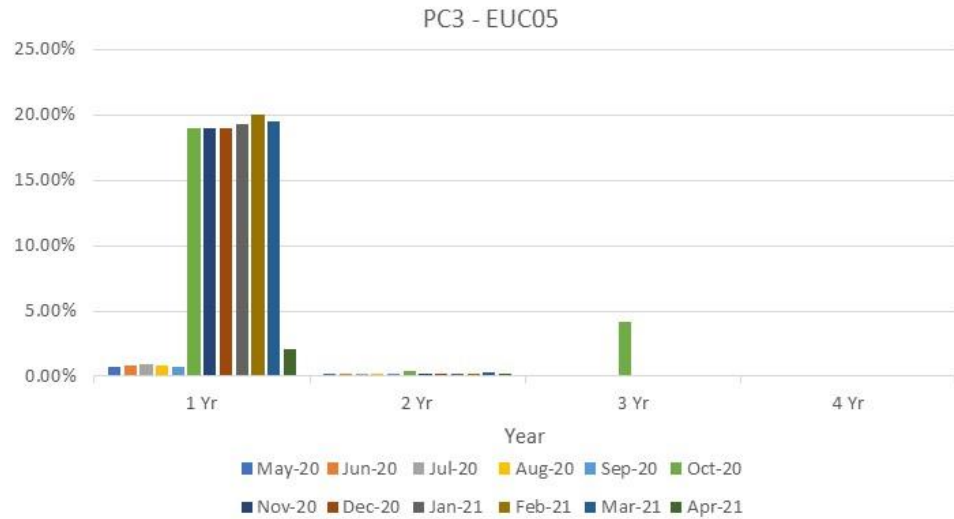




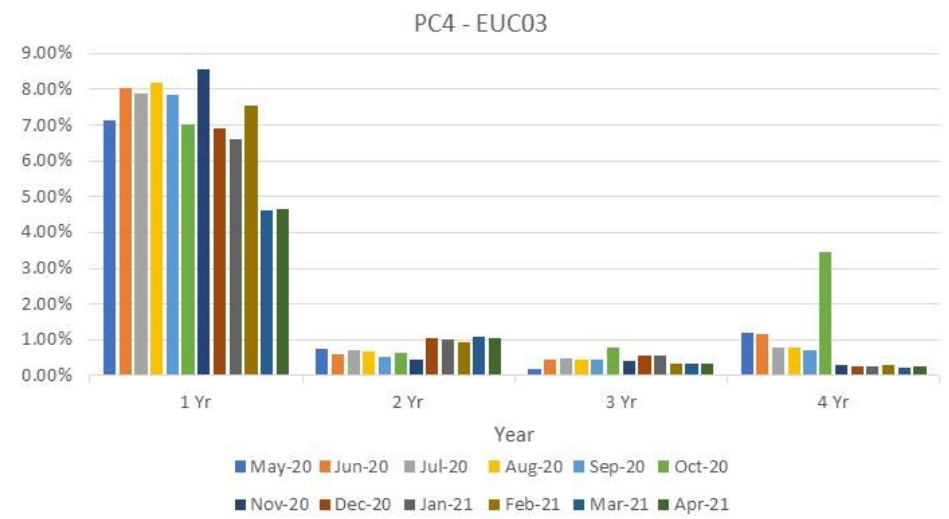
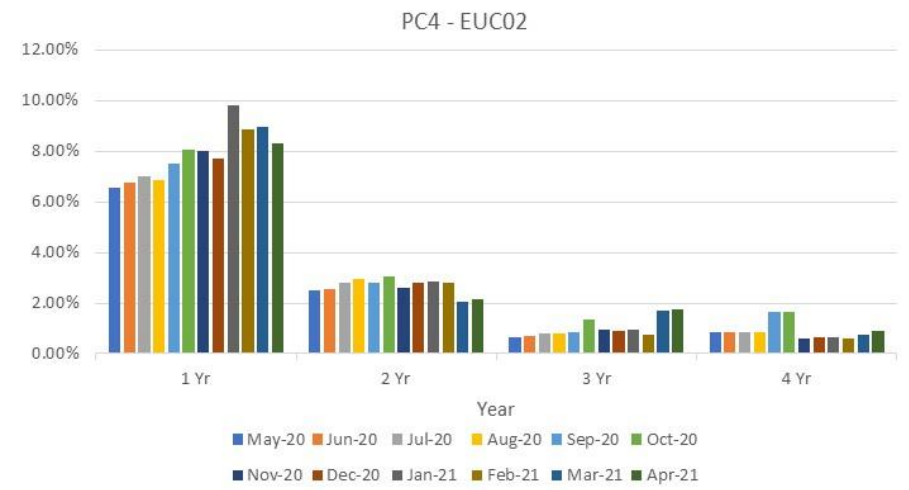
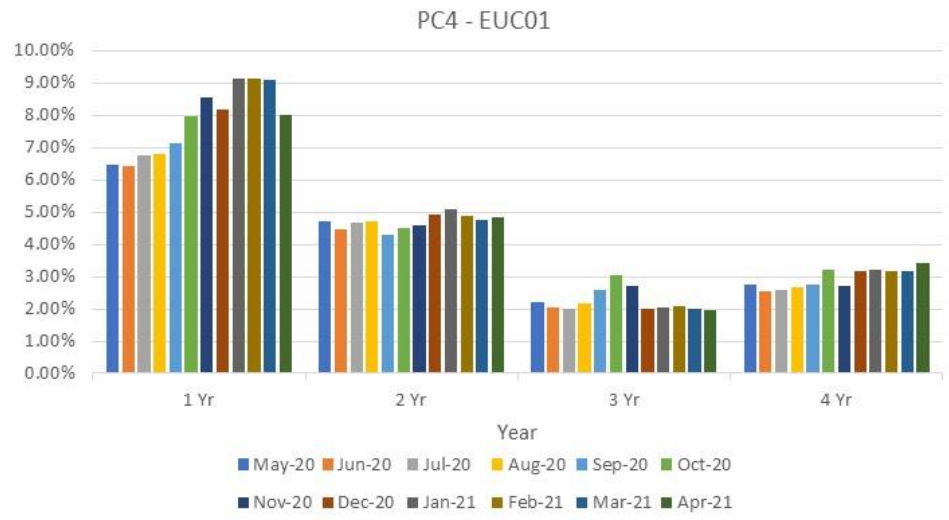
# 2A.7 No Reads Received for 1, 2, 3 or 4 years – Product Class 3



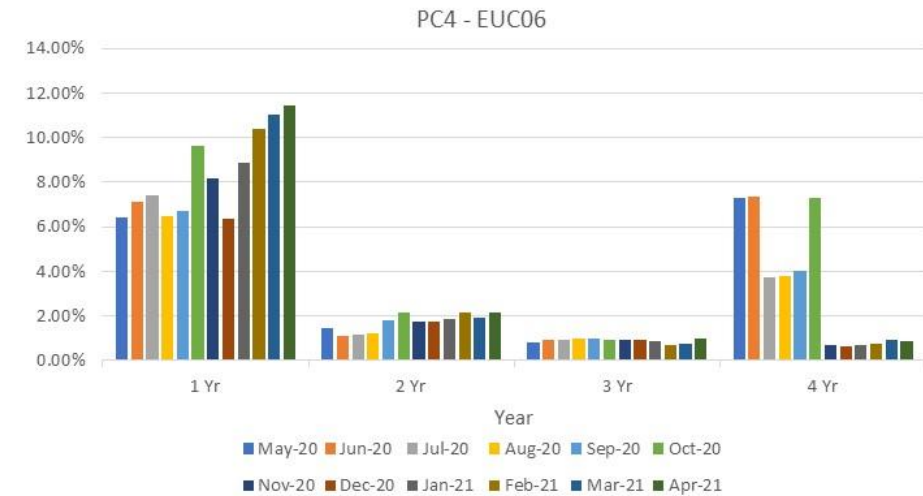
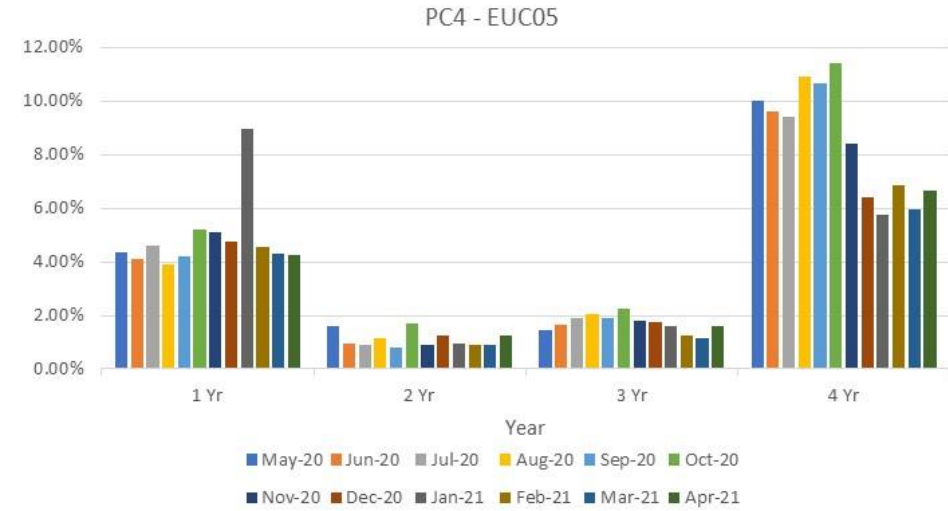
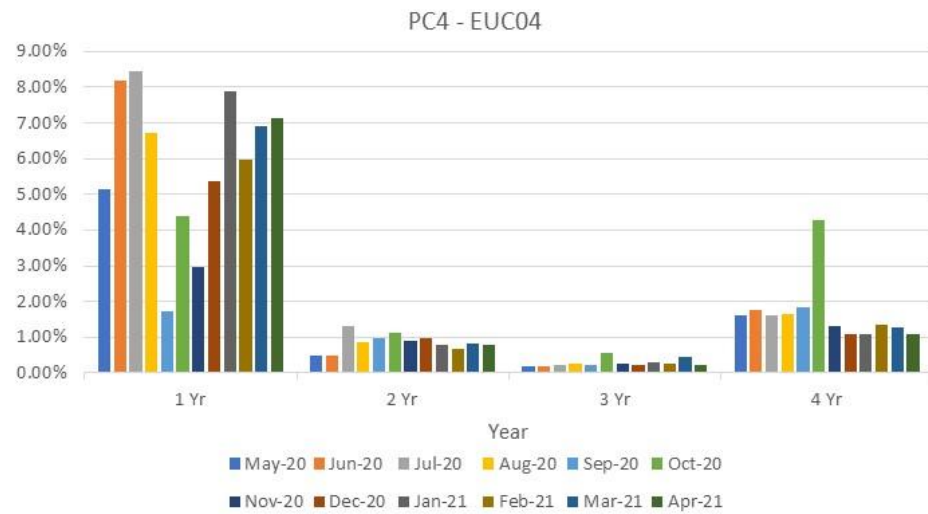
# 2A.7 No Reads Received for 1, 2, 3 or 4 years – Product Class 3



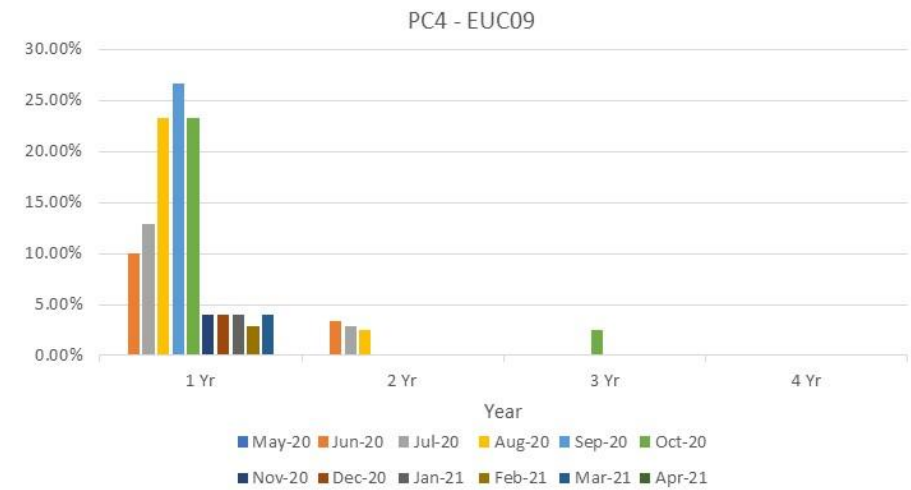
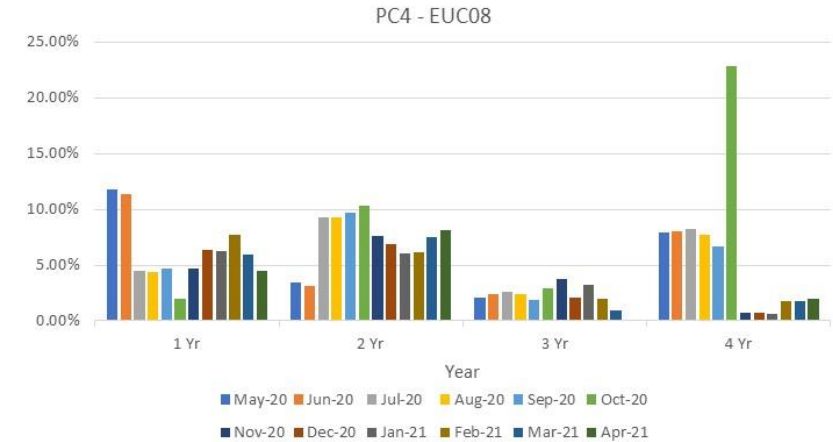
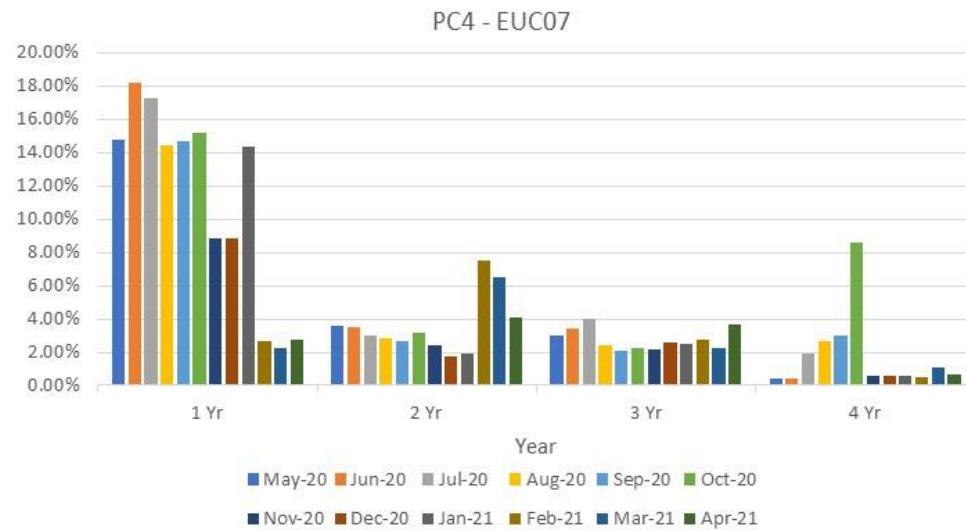
# 2A.7 No Reads Received for 1, 2, 3 or 4 years – Product Class 4



# 2A.7 No Reads Received for 1, 2, 3 or 4 years – Product Class 4



# 2A.7 No Reads Received for 1, 2, 3 or 4 years – Product Class 4



# 2A.8 AQ Correction by Reason Code

Report measures the count of Shipper Portfolio of MPRNs where AQ Correction process used

Changes in total number of AQ corrections used

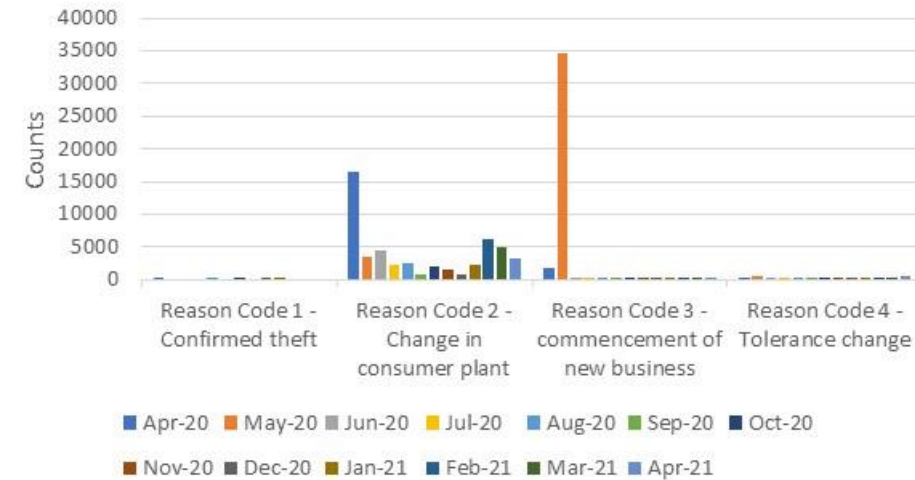
**Reason Code 01- Confirmed Theft**  
 No Monthly Change  
 ↓ 1 Annual Change

**Reason Code 02- Change in Consumer Plant**  
 ↓ 1693 Monthly Change  
 ↓ 13281 Annual Change

**Reason Code 03- Commencement of New Business**  
 ↓ 36 Monthly Change  
 ↓ 1733 Annual Change

**Reason Code 04- Tolerance Change**  
 ↑ 113 Monthly Change  
 ↑ 41 Annual Change

2A.8 Count of AQ Corrections used by reason code



**Observations:**

- The AQ corrections under “change in consumer plant” have been reducing over recent months
- PAC will continue to closely monitor this area

# 2A.9 Standard CF AQ > 732,000 kWh

Report measures the count of sites with an AQ>732,000 kWh, but having a standard correct factor

## EUC04

↓ 44 Monthly Change  
 ↑ 1722 Annual Change

## EUC07

↑ 2 Monthly Change  
 ↑ 20 Annual Change

## EUC05

↑ 14 Monthly Change  
 ↑ 154 Annual Change

## EUC08

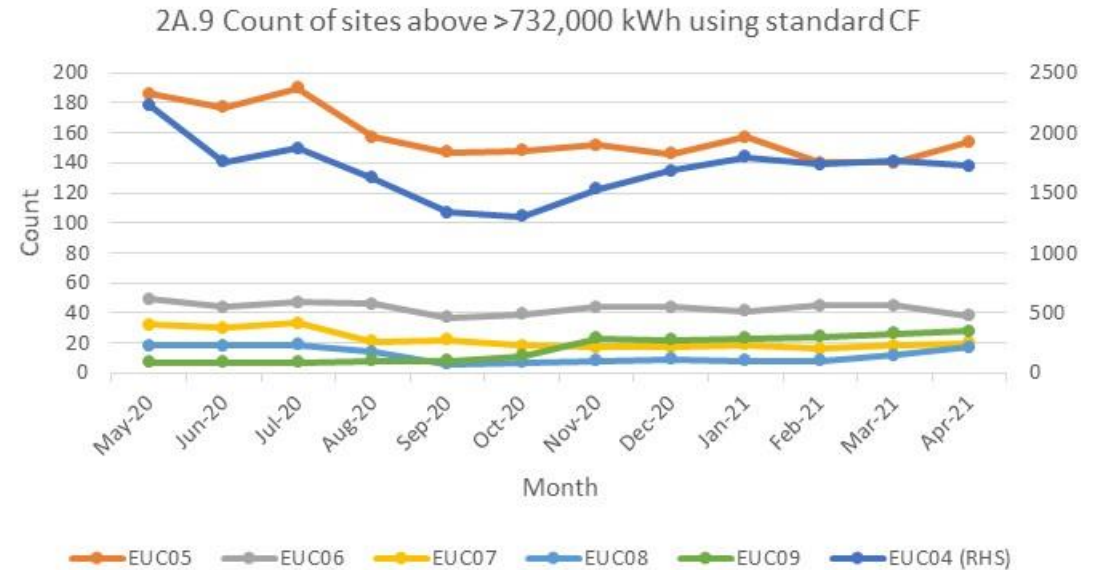
↑ 5 Monthly Change  
 ↑ 17 Annual Change

## EUC06

↓ 7 Monthly Change  
 ↑ 38 Annual Change

## EUC09

↑ 2 Monthly Change  
 ↑ 28 Annual Change



### Observations:

- EUC04 continues to have a significantly higher number of standard correction factors incorrectly used compared to other EUC bands
- Work with the CAMs continues in the area, but PAC are aware of the implementation of UNC681s and the potential impacts on the reports
- Monitoring will continue

# 2A.10 Replaced Meter Reads

Report measures the count of meter reading replacements which results in reconciliation adjustments

## EUC01

↑ 62419 Monthly Change  
 ↓ 197706 Annual Change

## EUC02

↑ 192 Monthly Change  
 ↑ 49 Annual Change

## EUC03

↓ 16 Monthly Change  
 ↓ 81 Annual Change

## EUC04

↓ 1 Monthly Change  
 ↓ 254 Annual Change

## EUC05

↑ 4 Monthly Change  
 ↑ 3 Annual Change

## EUC06

↓ 2 Monthly Change  
 ↓ 8 Annual Change

## EUC07

↓ 3 Monthly Change  
 ↓ 1 Annual Change

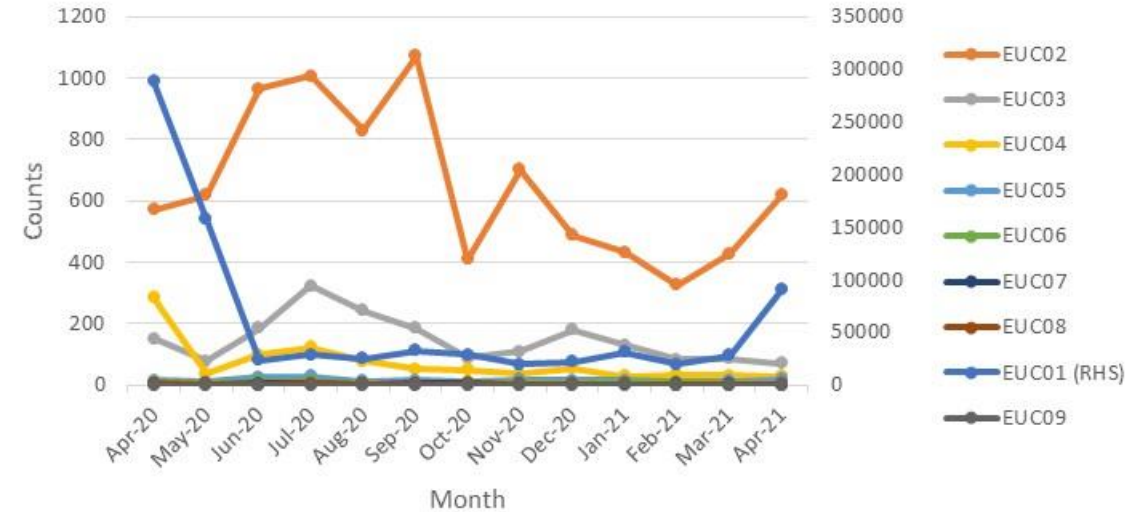
## EUC08

↑ 1 Monthly Change  
 ↓ 3 Annual Change

## EUC09

No Monthly Change  
 No Annual Change

2A.10 Count of meter reading replaced by EUC



### Observations:

- Work with the CAMs has enabled the PAC to identify that in general, the spikes are due to Shipper’s cleansing their portfolio.
- The number of replaced meter reads has generally been trending downwards across all EUC bands over the last few months.



# Appendix – PARR report details



Sr No	Topic	Details	Split By	12 Rolling Months	Format	e.g. For Nov Report	Condition	Comments
1	2A - Estimated & Check Reads used for Gas Allocation, and consumption adjustments for Product Classes 1 & 2	<p>Need to count everyday portfolio and count mprn where read has been estimated and no actual present on the same day .</p> <p>Check Read : For check reads we would need to check , as of reporting day how many class 1 &amp; 2 MPRNs are present with DRE/AMR.</p> <p>For those MPRNs we have site visit read &lt;=14 months and no subsequent site visit read . Those are outstanding ones per shipper.</p>	Class	Annual	Percentage	September	M-2	
2	2A - No Meter Recorded in the Supply Point Register	AQ Band wise , AQ band based on report run day . Class wise different table And AQ Band. Exclude NTS connected Sites & Telemeterd. Exiting SHPK - Topic - Confirmed No Asset Report	Class	Annual	Count & B - Percentage	Nov	M	
3	No Meter Recorded in the Supply Point Register and data flows received by Xoserve	Same as above but additionally need to check if for above MPRNs any Data Flow Means - > Asset Update , C & D Store & Reads received in that month	Class	Annual	Count & B - Percentage	Additional MPRNs		
4	2A - Shipper Transfer Read Performance	M-2 is considered – Open OPNT_REQ_FOLL_CON OPNT_RECEIVED_10	Class	Annual	Percentage	September	M-2	
5	Read Performance	As per frequency we need to check if we have received the read e.g. month read site will check if we have received the read in month .Class and shipper transfer are excluded .6 Monthly read site need to consider yearly ,it is not in UNC. It will be like MUR logic M-2 , exclude sites where class changes happened in M-2 , shipper changes	Class		Percentage	September	M-2	

# Appendix – PARR report details



Sr No	Topic	Details	Split By	12 Rolling Months	Format	e.g. For Nov Report	Condition	Comments
6	2A - Meter Read Validity Monitoring	<p>MRE01026 :Reading breached the lower Outer tolerance.                      MRE01027 :Reading breached the Upper Outer tolerance.                      MRE01028 :Reading breached the lower Inner tolerance value and no override flag provided.                      MRE01029 :Reading breached the upper Inner tolerance value and no override flag provided.                      MRE01030 :Override tolerance passed and override flag provided</p> <p>We can build this from DUK_ARSR , by checking failed reads . DUK_READ = We can get how many successfull reads received based on Status =U . Failed once are with status =F</p>	Reason Codes		Percentage	October	M-1	
7	No reads received for 1,2,3 or 4 years ( excludeds estimated	<p>Per class table , per AQ Band ,Need to ignore estimates for all classed Logic is similar to existing SHPK Logic - NO_READ_2Y_3Y_B73200                      Here we would need to create 4 counts No reads received for 1 , 2 , 3 , 4 years sepeartely as per layout</p>	AQ Band	Annual	Percentage	Nov	M	
8	2A - AQ Corrections	<p>AQ correction by reason code :                      Switch Type = 50 , Switch View = 50 , Switch status = LI                      Reason code per table , Reason code is new field added in ISU BW - DS                      OUC_SWTD0C Switch Document new field added in DS - ZZ_AQ_REASON</p>	AQ Band	Annual	count	October	M-1	
9	2A - Standard Correction Factors for sites with AQ > 732, MWH	<p>Standard correction factor by AQ Band                      Count of meter points where replacement reads received by AQ Band ,only for class 3&amp; 4 ,</p>	AQ Band	Annual		Nov	M	Report should only include AQs above 732000. Currently including >=732000
10	2A - Replaced Meter Reads	<p>Replaced meter reads are identified with DUK_READ where read reason = R , Upload Status = U , we would need to add AQ Band either in DUK_READ or consider while processing</p>	AQ Band	Annual		October	M-1	

PAFA@Gemserv.com

