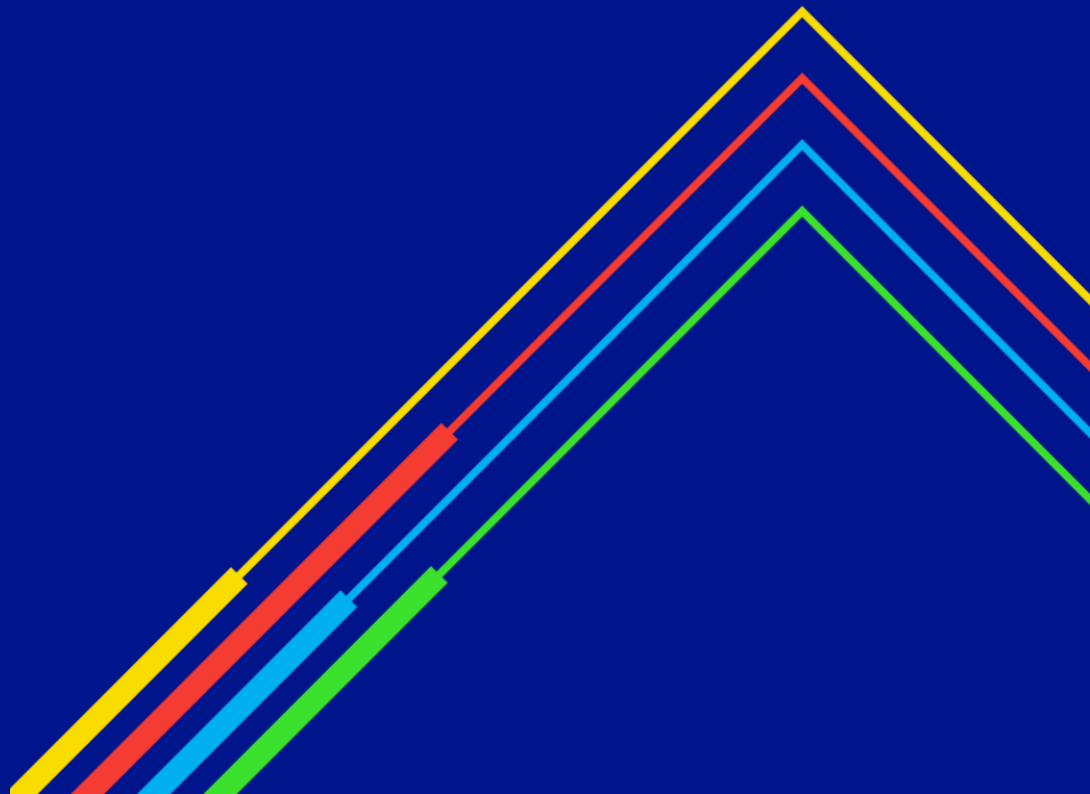


Capacity Access Review

Transmission Workgroup
1st July 2021

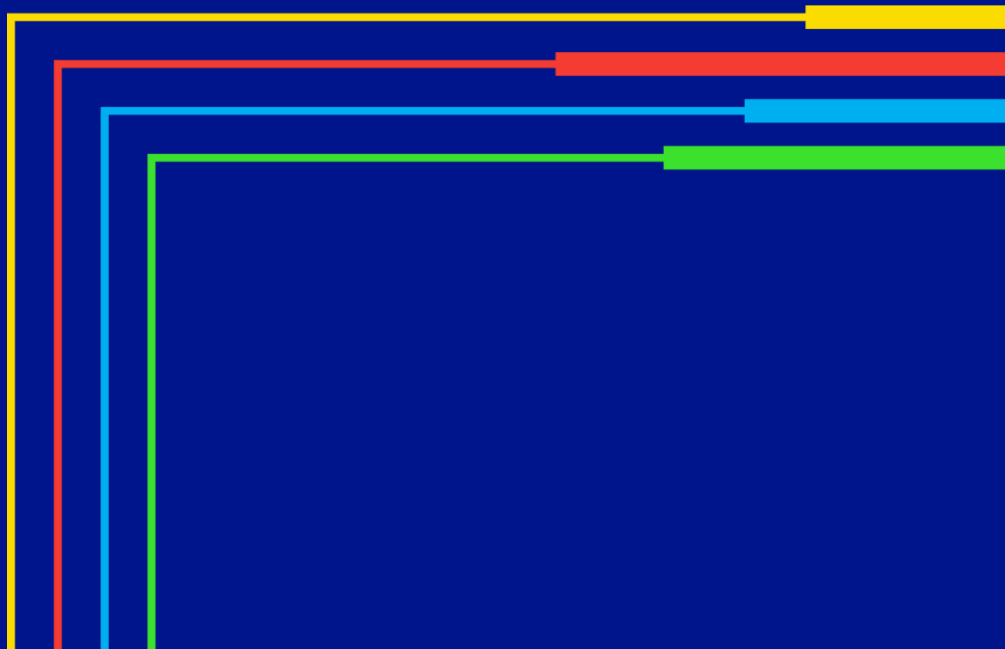
national**grid**



01

Movement of capacity between exit points

nationalgrid



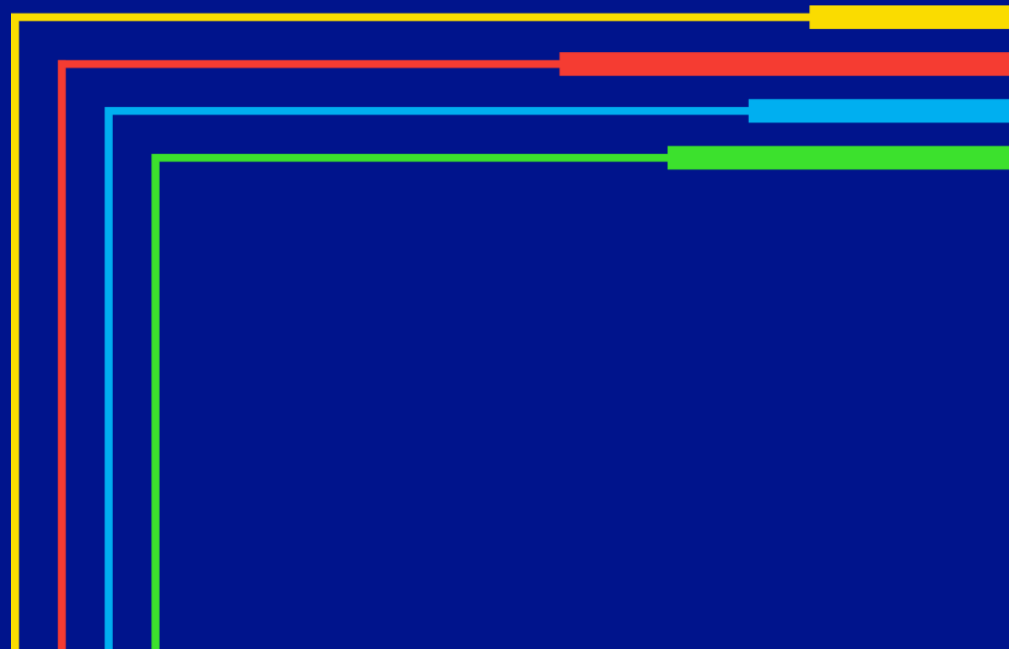
Movement of capacity between offtakes

Action 0602: National Grid (JR) to provide a graphical diagram setting out how the direct connects would interact.

Please see associated spreadsheet

02

Overruns



Overrun data

To be confirmed

Mandatory Setting of Bid Parameters (Mod 0745S)

Action 0603 National Grid (ASt) to confirm what mandatory parameters are being implemented as part of Modification 0745S – Mandatory Setting of Bid Parameters.

From 1st October 2021 Shippers would be unable to place bids in certain auctions unless they have set bid parameters for **Bid Price and Bid Volume**, where Bid Value (£) = Bid Price x Bid Volume

The following short term auctions will be affected

Gemini Entry	Gemini Exit
DADSEC	DADNEX
WDDSEC	WDDNEX
DISEC	DONEX

national**grid**