

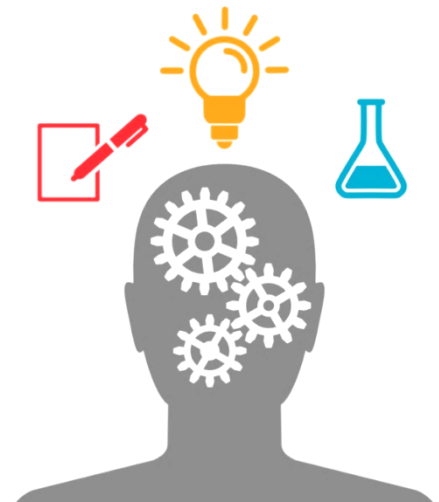
# Project CLoCC

Customer Low Cost Connections

## NETWORK INNOVATION COMPETITION PROJECT:

### CUSTOMER LOW COST CONNECTIONS (CLOCC)

**Nicola Lond**  
**Commercial Lead**



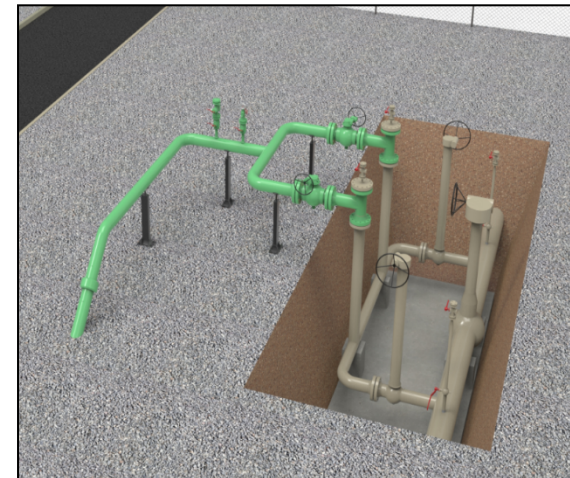
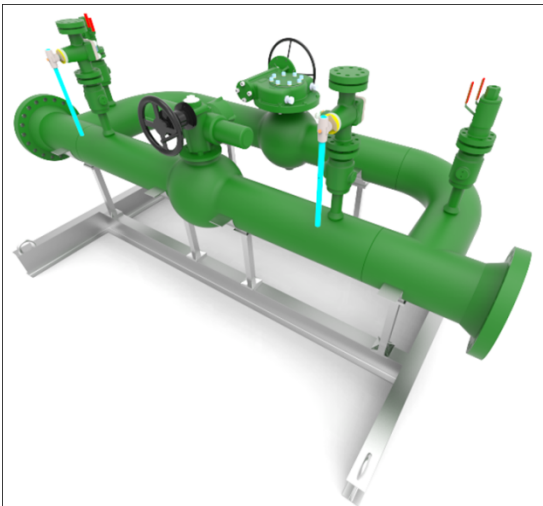
# Project CLoCC – Objectives for today

---

## Overview of Project CLoCC

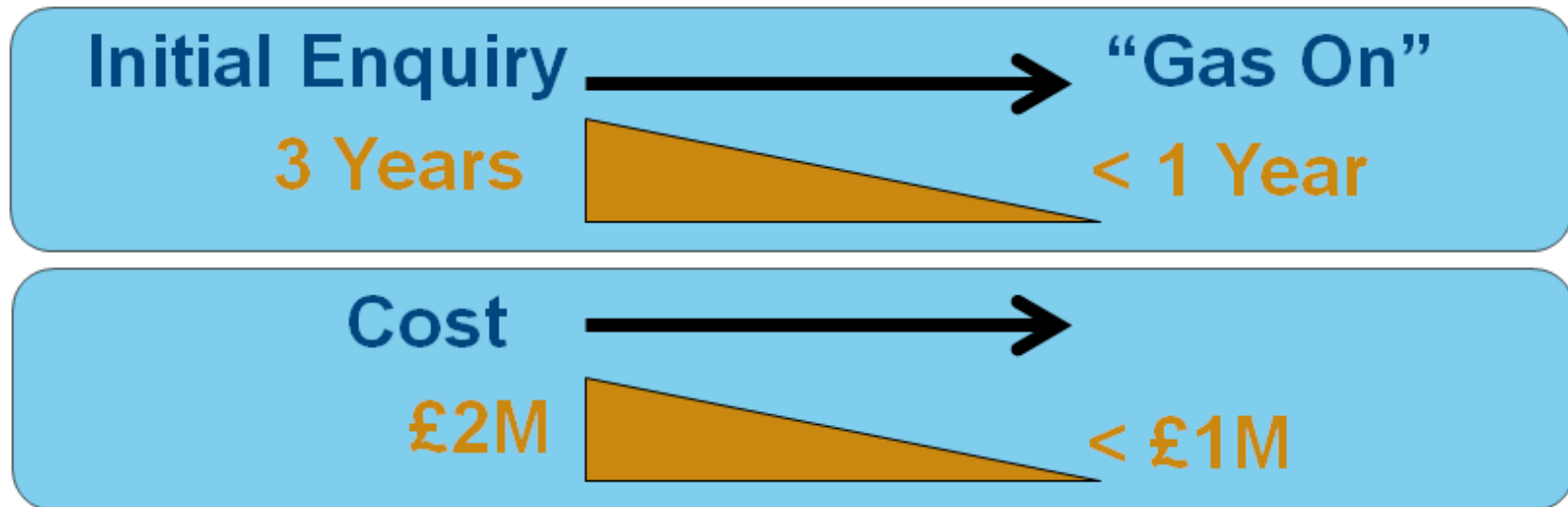
What are potential Commercial Changes?

Next Steps



## Project CLoCC – Core Objectives

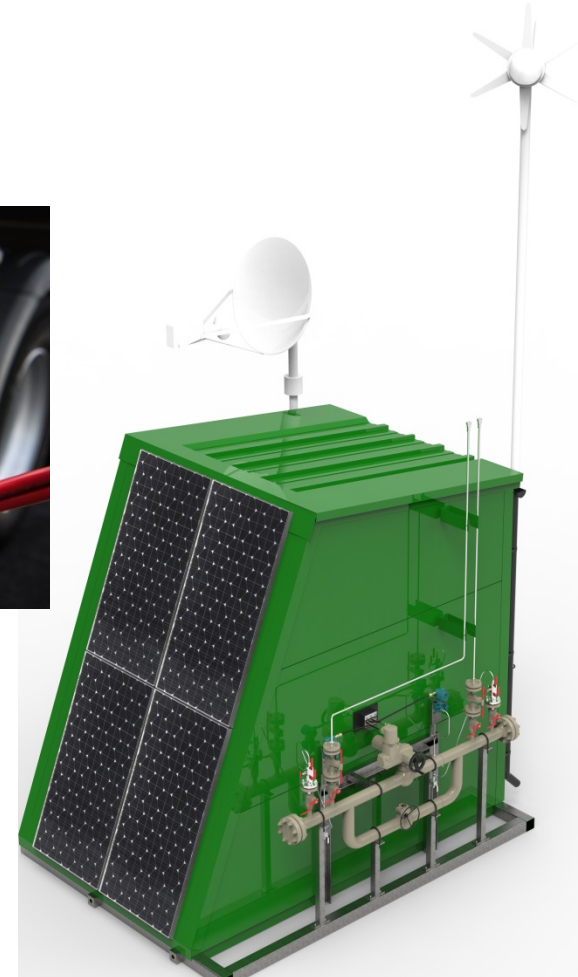
---



Engaging with key stakeholders now -  
Aiming to deliver by October 2018

Facilitating demand for connection of lower flows to NTS

# Decarbonising the Network



# New Online Customer Connections Portal

nationalgrid

Home Messages Applications Logout

## Application Summary

Connection portal / Application summary

### INDICATIVE QUOTE

The indicative quote provides an indication of the likely cost of your connection to the National Transmission System (NTS). Please see the 'Indicative Quote' section for more information.

If you wish to proceed to a formal offer you about your connection enquiry and decide Connection Offer.

[CREATE NEW INDICATIVE QUOTE](#)

### SAVED QUOTES

You have no completed indicative quotes started.

### APPLICATIONS

You have no active applications. To create 'Apply' button.

[INFORMATION](#)  
To read more about the steps which follow

## Indicative Quote

Connection portal / Application summary / Indicative quote

1 Site Location 2 Technical Parameters 3 Indicative Quote

### TECHNICAL PARAMETERS

To help us size your connection we need you to tell us some technical details.

Required fields are indicated by a red asterisk \*

### SITE LOCATION

Please tell us the location of the site you want to connect. Simply enter your post code or longitude coordinates (if you know them) and we will select the closest connection point.

Required fields are indicated by a red asterisk \*

#### INFORMATION

For the purpose of this prototype we have used a pre-defined geographical area to illustrate the process. Please select a postcode from the dropdown box.

Postcode

or

Latitude (Valid range: 51.9 to 52.16) \*  DD Longitude (Valid range: -0.31 to -2.29) \*

Click and drag your site marker to change the location.



EXIT

NEXT

### TECHNICAL PARAMETERS

To help us size your connection we need you to tell us some technical details.

Required fields are indicated by a red asterisk \*

Type of Connection required \*

What types of connections are available?

### ENTRY

What is your maximum required flow rate? \*  Scm/hr x1000

What is your maximum delivery distance? \*  km

BACK

NEXT

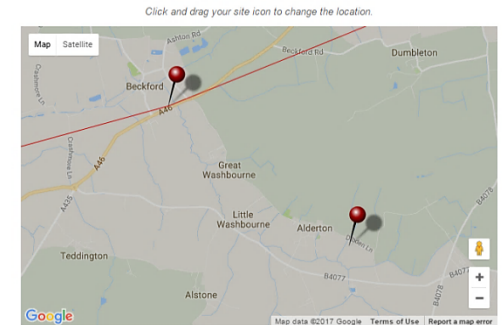
### YOUR INDICATIVE QUOTE

Based on the information you have provided this is the closest connection point to an existing National Grid Above Ground Installation (AGI). There may be a transmission pipeline closer to your location. Please select the NTS pipeline connection option from the drop down menu for an indicative quote.

Required fields are indicated by a red asterisk \*

Connection option \*

Distance from customers facilities to the NTS connection point  
3.56km



[Enhancements to your connection solution](#)

### INDICATIVE QUOTE

The indicative quote below provides an indication of the likely cost for your connection to the National Grid transmission network, based on the information you have provided. If you wish to proceed to a formal offer click on the 'Continue With My Application' button where we will need some more detailed information about your connection enquiry or, alternatively, click on the 'Start Again' button for a new indicative quote.

£590,000

# CLoCC response to Customer Feedback

Customer Comments	Project CLoCC Action
NTS connections take too long & too expensive	Deliver connection solutions within 12 months & Less that £1m
We'd like more predictable costs	Developed a suite of standardised connections designs that will be pre-approved and pre-appraised
We would like to be offered more services than just a Minimum Offtake Connection	Looking to make filtration and metering options available for our customers
Why do I need an ROV on my connection?	Reviewing the ROV requirement for exit connections that meet our risk assessment criteria – this will help reduce connection costs
Why is the application fee so large?	Developing options for making applications through the connections portal cheaper
More payment flexibility would be very useful	Looking at introducing the ability to phase payments
We'd like to have more information on our connection progress	Incorporated customer “status” updates into our new online connections portal
We need capacity and connection application processes better aligned	Incorporated the capacity process application into our new online connections portal with status updates on progress
The oxygen specification for connections to the NTS is prohibitive for biomethane entry projects	Looking to allow the current specification for oxygen to be assessed on a case by case basis.

# Commercial Arrangements under review

---

**Objective: To support Standard Design connections and also improvements for Bespoke Connections where possible.**

- **Application to Offer (UNC TPD V and Y)**
- **Capacity – PARCA (UNC TPD B)**
- **GT Licence modification to add new point**
- **National Transmission System gas quality - Oxygen**
- **Monitoring and Control of GS(M)R gas quality**
- **Removing requirement for Remotely Operable Valve (UNC TPD Y)**

# Standard Design Gas Connections Journey

## Application to Offer (A2O) Process



*Approx. 2 months*

## Delivery Process



*Approx. 10 months*

**Full delivery within 12 months to achieve CLoCC core objectives**



# Capacity example - PARCA

---

- Up front Network Analysis built into the Portal.
- Traffic light capacity indicator for flow rate meeting Standardised designs. (max 53 gwh/d)
- **If Green** can have accelerated route to PARCA offer (Stage 1)
  - We know Capacity can be easily substituted
- **If Amber** further assessment required (becomes Green or Red)
- **If Red** full PARCA process required.
  
- No Adhoc/PARCA windows required in accelerated process as no investment required.
- PARCA offer can be made in the timeline required for a Standardised design connection

# Summary of Potential Commercial changes

---

Area	modified	New
A2O	UNC/Methodologies	Guides
Capacity/PARCA	UNC/Methodologies Licence (TBC)	
New Points in Licence	Licence	Offline Report
Oxygen relaxation	GTYS	
Connection Charges phased	UNC/Methodologies	
Enhancements	UNC/Methodologies Licence	New contracts
ROV removal	UNC	

## Next Steps

---

**Now**

**Oct 18**

Industry Engagement

UNC modifications

Licence Modifications

Methodology Modifications

Industry Consultation

Approval

Implementation

# Project CLoCC

Customer Low Cost Connections

Project CLoCC is listening to stakeholders  
[www.projectclocc.com](http://www.projectclocc.com)

**Contact:**  
**Nicola Lond**  
**Commercial Lead**

**m:+44 07824 551667**

**[nicola.j.lond@nationalgrid.com](mailto:nicola.j.lond@nationalgrid.com)**

