

E.ON Comments

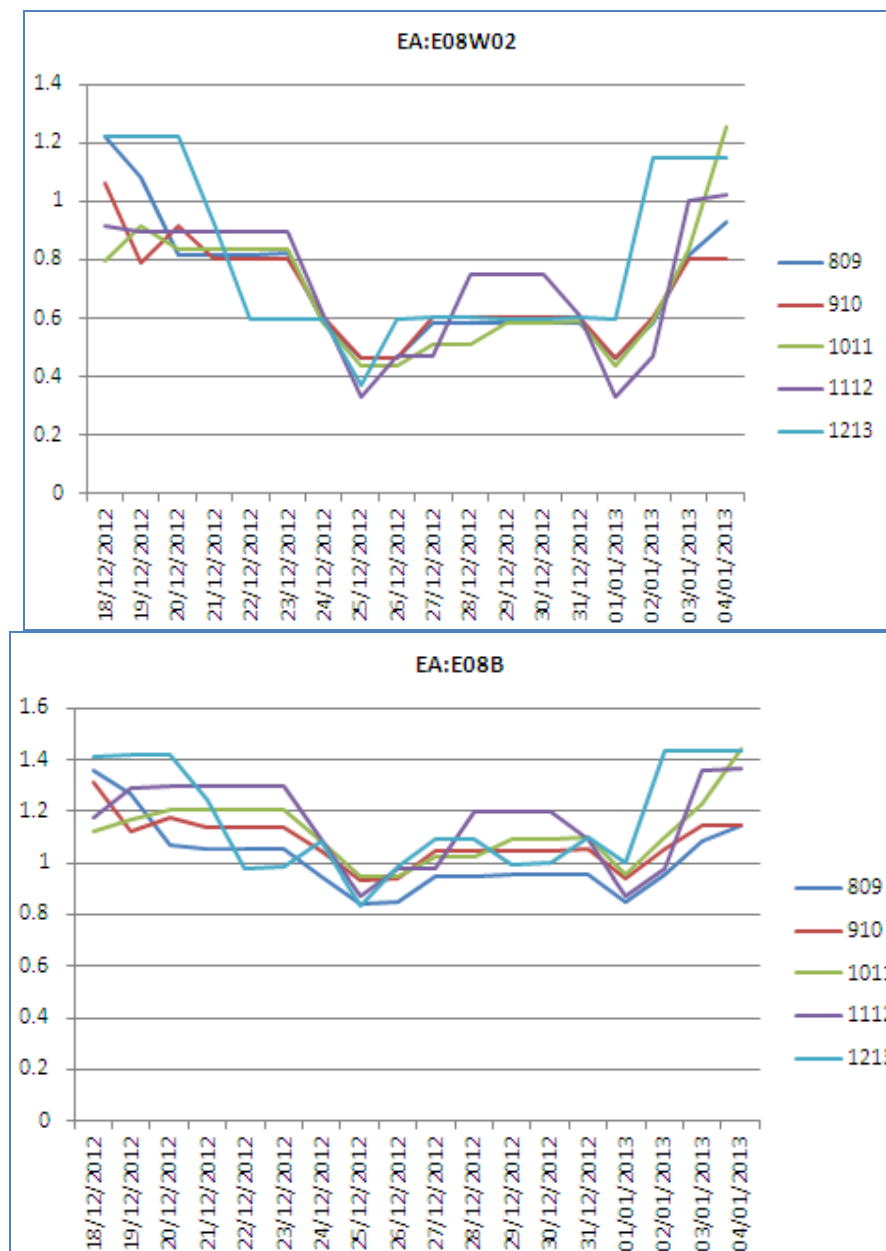
19th Jun 2012

Re: NDM Gas Demand Allocation Profile data for Gas Year 2012/2013

With regards to the draft NDM Allocation Profile parameters issued in early June 2012 for use in Gas Year 2012/13, we would like to raise the following points of consideration.

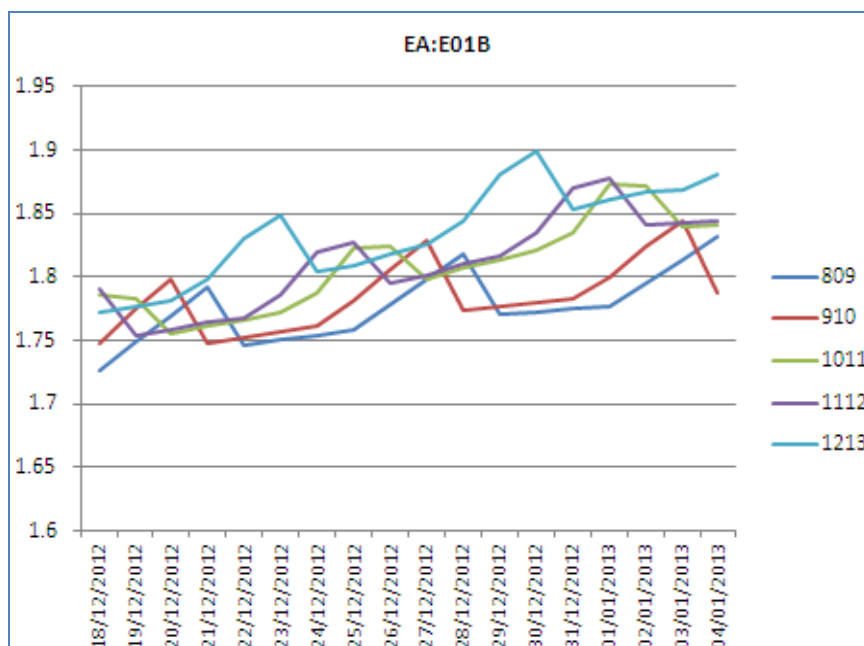
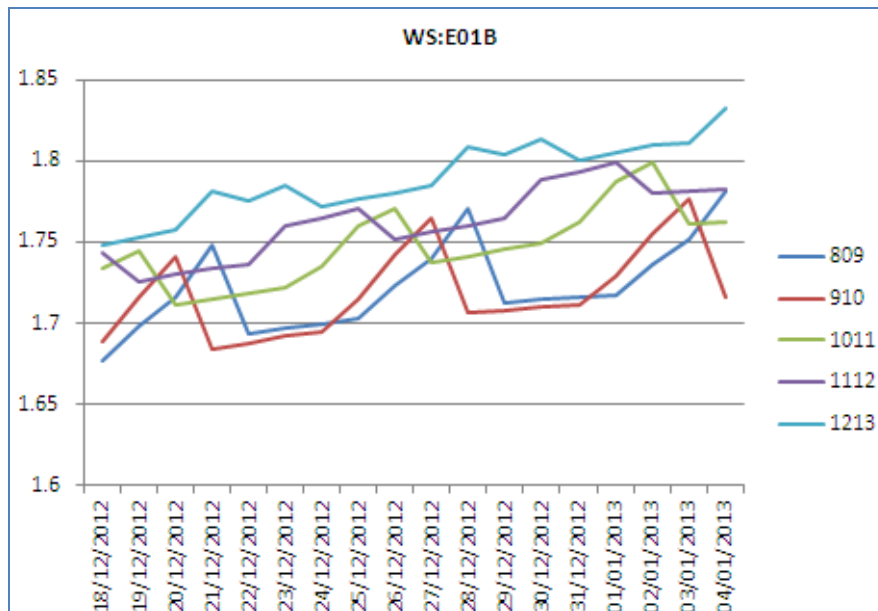
Query 1. Christmas 2012 ALPS – EUC weekend profile discrepancy

We have become aware that the ALPs in some specific EUC WAR bands, for example EUC08 W02, exhibit a flatter shape following Christmas 2012 in comparison to other EUC bandings. Below is an example of EA:E08W02 along with EA:E08B. Is this expected and is there an explanation for why this certain WAR band behaves in such a way?



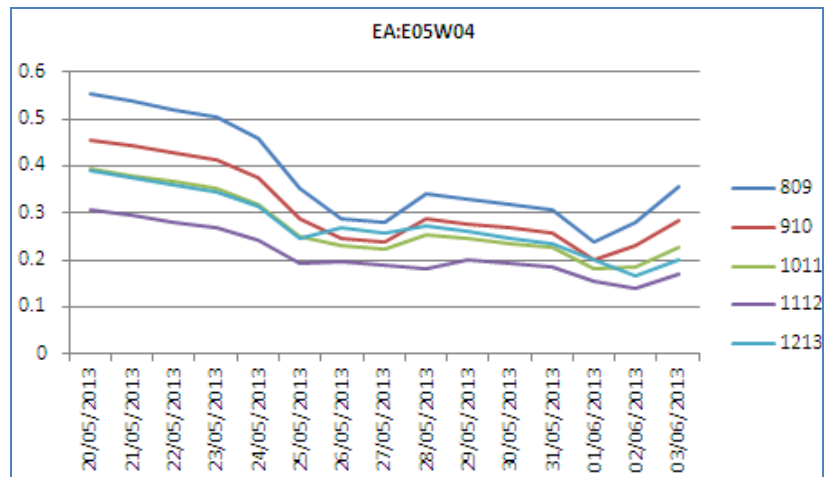
Query 2. Christmas 2012 ALPS – WS & EA E01B

As can be determined from the graphs below, the weekend shape of the ALP for band 01B in EUC WS is now lower on a Saturday than on either a Friday or a Sunday. This is a change to standard behaviour as illustrated for LDZ EA over the Christmas period. Is this difference in behaviour expected what is the driver?



Query 3. Late May Bank Holiday weekend shape

As can be seen in the chart below for banding EA:E05W04, there appears to be a new weekend shape in comparison to previous years, for the weekend prior to the Late May Bank Holiday, and also the weekend following.



This new weekend shape has not been applied across the board, as demonstrated by the charts below, applied to only one weekend sometimes, and in the majority of cases not applied at all. Again is there an explanation for this new weekend shape, applicable to specific bandings.

