

**MEASUREMENT ERROR  
NOTIFICATION GUIDELINES FOR  
NTS TO LDZ AND LDZ TO LDZ  
MEASUREMENT INSTALLATIONS**

Deleted: 4
Deleted: .
Deleted: 2
Deleted: 7
Deleted: 1

Document Control

Version	Date	Reason for Change
1.0	01 September 2008	Implementation version
2.0	16 October 2008	Amendments to wording on pages 14, 15, and 32 (as agreed at Offtake Arrangements Workgroup 12/09/08). Approved by UNC Committee 16 October 2008
2.1	4 <sup>th</sup> February 2011	Amendment proposed by British Gas to introduce a second Independent Technical Expert for the most significant errors.
2.2	9 <sup>th</sup> February 2011	Further amendment proposed by British Gas, highlighted in yellow within the document.
3.0	17 <sup>th</sup> February 2011	The proposed revisions above were approved by UNC Committee on 17 February 2011
3.1	12th July 2011	Amendments proposed by British Gas
4.0	21 <sup>st</sup> July 2011	The proposed revisions above were approved by UNC Committee on 21 July 2011
<a href="#">5.0</a>	<a href="#">Feb 2017</a>	<a href="#">Amendments to remove the need for two Independent Technical Experts for significant errors</a>

Deleted: 4
Deleted: .
Deleted: 2
Deleted: 7
Deleted: 1

## Contents

1.	Definitions.....	4	Deleted: 45
2.	The Guidelines.....	<b>Error! Bookmark not defined.</b>	Deleted: Error! Bookmark not defined.7
3.	Measurement Equipment Validation .....	6	Deleted: 67
4.	Action on Identification of a Measurement Error.....	7	
5.	Template for “Measurement Error Notification Mechanism” .....	7	Deleted: 79
6.	Identification and Notification of Potential Measurement Errors.....	8	Deleted: 810
7.	Determination of Significance of Measurement Error and Appropriate Path .....	10	Deleted: 1013
7A.	Treatment of Measurement Errors estimated to be >500GWh.....	17	
8.	Business Rules for the Authorisation of Significance of the Measurement Error by the Offtake Committee.....	17	Deleted: 1721
9.	Framework for Approved List of Independent Technical Experts .....	19	Deleted: 1924
10.	Generic Terms of Reference for an Appointed Independent Technical Expert.....	21	Deleted: 2126
11.	Framework for the Technical Workgroup or Sub Committee Meeting.....	23	Deleted: 2328
12.	Framework for Final Meeting where the Appointed Independent Technical Expert in conjunction with the Downstream Party presents the Methodology and Data Employed in the Significant Measurement Error Report.....	24	Deleted: 2429
13.	Business Rules for the Compilation of a Measurement Error Report .....	25	Deleted: 2530
14.	Business Rules for the Compilation of a Significant Measurement Error Report.....	27	Deleted: 2732
15.	Framework for Technical Issues, Relevant Queries, Data Requests and Supporting Evidence Requests .....	29	Deleted: 2934
16.	Publication of the Evaluation Methodology for the Significant Measurement Error Report.....	33	Deleted: 3338
17.	Publishing Significant Measurement Error Reports .....	33	Deleted: 3338
18.	Publishing Measurement Error Reports.....	33	Deleted: 3338

Deleted: 4

Deleted: .

Deleted: 2

Deleted: 7

Deleted: 1

## 1. The Guidelines

This document is a Uniform Network Code Related Document and is published and managed in accordance with the terms set out in the Transportation Principal Document Section V paragraph 12.

These Guidelines set out the means by which Measurement Error information is published on the Joint Office of Gas Transporters' website ([www.gasgovernance.co.uk](http://www.gasgovernance.co.uk)) and outline the process to be followed for all Measurement Errors associated with **“Measurement Equipment”** between the **“National Transmission System (NTS)”** and **“Local Distribution Zones LDZs)”** or the Measurement Equipment between two LDZs. For Measurement Errors estimated to exceed the 50 GWh threshold, referred to as Significant Measurement Errors, these Guidelines detail how they should be notified to interested parties via the Offtake Arrangements Workgroup or Offtake Committee.

## 2. Definitions

Unless otherwise stated, terms in these Measurement Error Notification Guidelines (**“these Guidelines”**) shall have the meanings given to them in the Uniform Network Code. Such terms will be capitalised within quotation marks where first used in the Guidelines.

In these Guidelines:

**“Measurement Error”** – any **“Fault”** which results in a systematic bias to measured quantities.

**“Measurement Error Report” or “MER”** – a document compiled by the Downstream Party for Measurement Errors less than 50 GWh, detailing the nature of the Measurement Error identified, the corrected readings and the methodology used in the technical evaluation of the Measurement Error.

**“Significant Measurement Error”** - a Measurement Error that is estimated to exceed the 50 GWh threshold referred to in these Guidelines.

**“Significant Measurement Error Report” or “SMER”** – a document compiled by an Appointed Independent Technical Expert, detailing the nature of the Measurement Error identified, the corrected readings and the methodology used in the technical evaluation of the Measurement Error. The SMER is only compiled for Measurement Errors that are either 50 GWh or greater or where it is believed that the Measurement Error has the potential on the production of the final Measurement Error Report to be greater than the Significant Measurement Error threshold (50 GWh) or the Measurement Error could have significant implications for the industry. As the corrected readings provided within the SMER have been derived by an Appointed Independent Technical Expert in consultation with the Downstream Party, the Upstream Party and Users, they represent a final binding technical evaluation of the magnitude of Measurement Error.

**“Independent Technical Expert”** – an independent measurement expert who has been nominated by one of the Parties (Downstream Party, Upstream Party or Users) to be used in the compilation of a Significant Measurement Error Report. The Independent Technical Expert should not, at the time of endorsement of appointment, be directly employed by the Upstream Transporter, the Downstream Transporter or Users. As a consequence of appointment, the Independent Technical Expert will subsequently be in

Deleted: 4

Deleted: .

Deleted: 2

Deleted: 7

Deleted: 1

the employment of the Downstream Party by means of a contractual arrangement for the purposes of the compilation of the Significant Measurement Error Report.

**“Appointed Independent Technical Expert”** – the Independent Technical Expert proposed by the Offtake Arrangements Workgroup, endorsed by the Offtake Committee and subsequently contracted by the Downstream Party to construct the SMER for the Measurement Error identified.

**“Listed Independent Technical Experts”** – an Independent Technical Expert that has been approved by the Offtake Committee and appears on the Independent Technical Expert Log.

**“Generic Terms of Reference”** – the standard terms of reference to be applied as the basis of the contracts between the Downstream Party and the Appointed Independent Technical Expert for the compilation of a Significant Measurement Error Report.

**“Technical Measurement Issue”** – any issue that may have a material impact on any critical data item connected directly to the identified Measurement Error.

Deleted: 4
Deleted: .
Deleted: 2
Deleted: 7
Deleted: 1

### 3. Measurement Equipment Validation

Section D of the Offtake Arrangements Document (OAD) sets out the responsibilities for the maintenance and **“Routine Validation”** of Measurement Equipment, at an **“Offtake”**, by the **“Downstream Party”** and an **“Exceptional Validation”** (OAD D3.3) performed at the request of the **“Upstream Party”**. The procedures for Validation (T/PR/ME2 Parts 1, 2 and 3 and T/PR/GQ/3), are available from the Joint Office of Gas Transporters’ website at ([www.gasgovernance.co.uk](http://www.gasgovernance.co.uk)),

Following the completion of a Routine or Exceptional Validation the Downstream Party is required to compile a **“Validation Report”** (OAD D3.4).

### 4. Action on Identification of a Measurement Error

The OAD requires the Measurement Equipment to be operating within its **“Permitted Range”** (OAD D1.4) as indicated in the site specific **“Supplemental Agreement”**. If the Measurement Equipment is found to be operating outside its Permitted Range or with a systematic bias it is classed to be a **“Fault”** (OAD D4.1). Upon identification of a Fault, the Downstream Party is required to correct the Fault and notify the Upstream Party.

These Guidelines only require the notification of Faults which are likely to result in a systematic bias to the measured quantity. They do not cover Faults associated with equipment operating outside its Permitted Range when the mis-measurement is of a random nature displaying a symmetrical statistical distribution around the actual measurement.

Systematic bias is deemed to be a bias resulting from the measurement system, leading on average to biases in measurement which result in measured values being systematically too high or too low.

There are various Measurement Error trigger points within OAD activities which will link into these Guidelines which form the **“UNC Related Document”**.

Some trigger points identified that may lead to Measurement Errors are:

- Daily processing of meter readings
- Site maintenance visits
- Routine Validation
- Exceptional Validation
- Site Audits
- Any other event that causes the Downstream Party directly or indirectly to carry out checks.

The OAD requires that the Downstream Party supplies corrected readings to the Upstream Party only when the Fault identified is a systematic bias. These corrected

Deleted: 4

Deleted: .

Deleted: 2

Deleted: 7

Deleted: 1

readings are supplied as part of the “**Measurement Error Report (MER)**” or “**Significant Measurement Error Report (SMER)**” described in these Guidelines.

For the purpose of these Guidelines, a “**Measurement Error**” is deemed to be where:

- A Fault is discovered in the Measurement Equipment which results in a systematic bias.

The Downstream Party will inform the Joint Office of Gas Transporters whenever a Measurement Error is identified.

## 5. Template for “Measurement Error Notification Mechanism”

- Unique Reference Number;
- Date Measurement Error first notified;
- Gas Transporter (downstream and upstream);
- LDZ;
- Offtake;
- Average flow rates for the meter for the perceived duration of the Measurement Error
- A brief description of the believed Measurement Error cause and effect;
- The date when the Measurement Error was discovered, started (or last good read) and corrected;
- Systematic bias? (yes or no);
- Reason Measurement Error was detected;
- Over or under read;
- Estimated “**volume**” impact in MCM;
- Estimated “**quantity**” in GWh;
- Estimated significance (Low/Medium/High/Very High);
  - (Low – 0 to less than 30 GWh, Medium - 30 to less than 50 GWh, High - Over 50 GWh, Very High over 500GWh);
- **Error status (one of the following):**
  - Error notified;
  - MER/SMER in compilation;
  - MER/SMER published;
  - Awaiting first available invoice;
  - Invoiced;
  - Closed / no rec required.
- Anticipated MER/SMER publication date;
- Date of latest notification update.

**Comment [MD1]:** Agreement needed from members of the OAW that these status correct / do we need any others

**Comment [NG2]:** Needs to be reviewed and concluded with all status\*

**Deleted:** 4

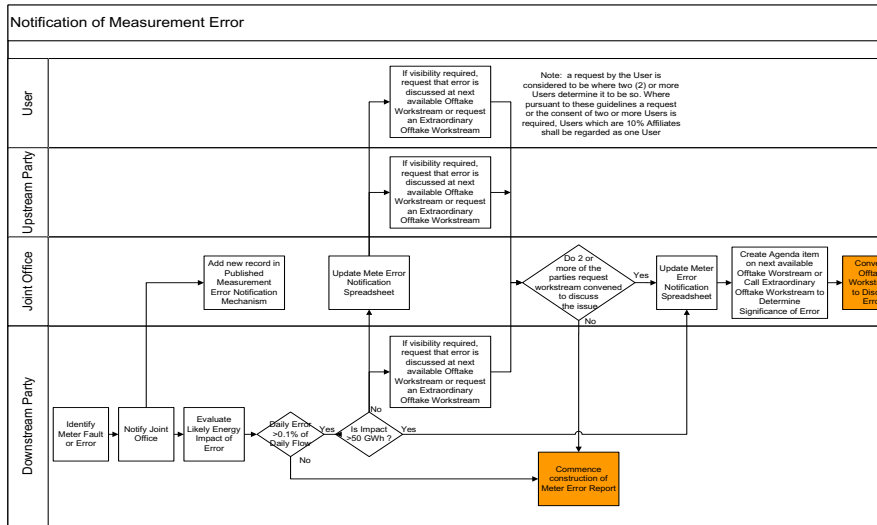
**Deleted:** .

**Deleted:** 2

**Deleted:** 7

**Deleted:** 1

## 6. Identification and Notification of Potential Measurement Errors



- The Downstream Party must upon identification of a potential Measurement Error:
  - Provide details to the Joint Office of Gas Transporters for publication.
  - If, for every day within the identified error duration, the error represents less than 0.1% of the end of Day quantities measured at that Offtake, then no reconciliation will be made for any day within the error duration and a null report written;
  - Update the Measurement Error Notification Mechanism with the latest available information, at a frequency to be determined at the initial meeting where the error is discussed.
- The Upstream Party & Users will:
  - For notified Measurement Errors estimated to be less than 50 GWh, determine within twenty one (21) Business Days of a material update to the Measurement Error Notification Mechanism whether it merits submitting a request to the Joint Office of Gas Transporters for inclusion on the agenda of the next available Offtake Arrangements Workgroup or request that an extraordinary Offtake Arrangements Workgroup be convened to discuss the issue.
- The Joint Office of Gas Transporters will:
  - Create a new record on the Measurement Error Notification Mechanism for any new errors identified by a Downstream Party and update as necessary; Convene Offtake Arrangements Workgroup meetings (either

Deleted: .
Deleted: 4
Deleted: .
Deleted: 2
Deleted: 7
Deleted: 1

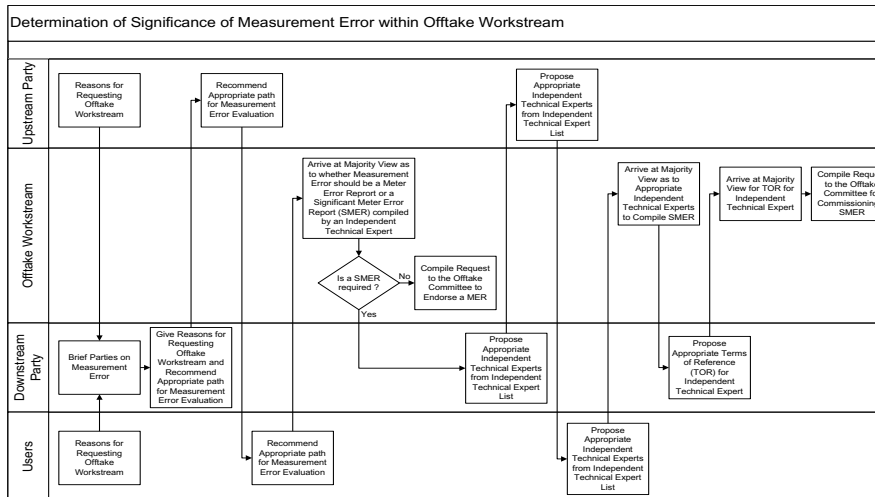


routine or exceptional) to discuss Measurement Error Issues identified by the Upstream Party.

- Conduct all such proceedings in accordance with the Code Administrators Code of Practice?

Deleted: 4
Deleted: .
Deleted: 2
Deleted: 7
Deleted: 1

## 7. Determination of the Significance of the Measurement Error and Appropriate Path



At the Offtake Arrangements Workgroup where a Meter Error has first been added to the agenda:

In this Section the term “**majority view**” shall mean the agreement of two (2) or more of the following three (3) Parties:

- The Downstream Party;
- The Upstream Party;
- Two (2) or more companies who are not affiliates and who are registered as Users.
- The Downstream Party, at the first meeting of the Offtake Arrangements Workgroup, will:
  - Present a report of the Measurement Error to the Offtake Arrangements Workgroup including:
    - Background to the Measurement Error;
    - Cause of the Measurement Error; and
    - Estimated impact of the Measurement Error.
  - Where the estimated error is <50 GWh each of the following Parties:-
    - the Downstream Party,
    - the Upstream Party and
    - Two (2) or more companies who are not affiliates and who are registered as Users may:

Deleted: 4

Deleted: .

Deleted: 2

Deleted: 7

Deleted: 1

Propose whether the evaluation of the Measurement Error should be undertaken by an **“Independent Technical Expert”** as a SMER, or whether a MER should be compiled by the Downstream Party, giving the reasoning behind the approach.

- Where a majority view is reached that a SMER is required:
  - Using the Nomination Form provided each Party will collectively nominate up to three (3) Independent Technical Experts from the **“Listed Independent Technical Experts”** ranked in order of preference (1 to n, where 1 is the least favoured and n the most favoured) to the Workgroup Chairman; and
  - Propose appropriate terms of reference (incorporating the **“Generic Terms of Reference”** contained within these Guidelines) for the **“Appointed Independent Technical Expert”** that would undertake the compilation of a SMER.
- The Offtake Arrangements Workgroup will seek to:
  - Arrive at a majority view, that the request will be a SMER compiled by an Independent Technical Expert from the predefined approved list of Independent Technical Experts, or a MER compiled by the relevant Downstream Party.
  - As necessary, arrive at a majority view on the appropriate Independent Technical Expert that should be proposed to compile the SMER from the predefined approved list of Independent Technical Experts.
  - The Workgroup Chairman will:
    - Receive the completed nomination forms and collate the list of nominated Independent Technical Experts (n) and provide the final selection to the Downstream Party, the Upstream Party and Users for scoring purposes;
    - Collate aggregated scores for the nominated Independent Technical Experts and propose the highest scoring Independent Technical Expert (or in the case of a tie, all the highest scoring Independent Technical Experts) to the Offtake Committee for endorsement.
- If the Offtake Arrangements Workgroup is unable to reach either a consensus or majority view on the terms of reference, the Downstream Party shall submit its recommendations to the Chairman of the Offtake Arrangements Workgroup for submission to the Offtake Committee for approval.
- The Chairman of the Offtake Arrangements Workgroup will:
  - Make the request to the Offtake Committee to authorise the compilation of a MER; or
  - Make the request to the Offtake Committee to authorise the compilation of a SMER (including terms of reference and proposed Independent Technical Expert).

Deleted: (s)

Deleted: <#>As necessary, arrive at consensus, or failing this arrive at a majority view on the appropriate terms of reference for the Appointed Independent Technical Expert to compile the SMER.

Deleted: <#> .

Deleted: s

Deleted: 4

Deleted: .

Deleted: 2

Deleted: 7

Deleted: 1

A majority view is required for any potential Measurement Error that is estimated to be less than 50 GWh to be compiled by an Appointed Independent Technical Expert as a SMER.

For clarity it is expected that Measurement Errors of less than 50 GWh will only follow the process for Significant Measurement Errors when it is believed that the error has the potential, on the production of the final Measurement Error Report, to be greater than the Significant Measurement Error threshold (50 GWh) or the error could have significant implications for the industry.

Deleted: 4
Deleted: .
Deleted: 2
Deleted: 7
Deleted: 1

7A. Treatment of Measurement Errors estimated to be >500GWh

This section will be applicable to all measurements errors where the initial estimate is in excess of 500GWh including, for the avoidance of doubt, already notified measurement errors >500GWh where an Independent Technical Expert has already been appointed but a draft Significant Measurement Error Report has not been published.

The Users present at the meeting of the Offtake Arrangements Workgroup<sup>1</sup> where the appointment process takes place will:

- Using the Nomination Form provided each User present will individually nominate up to three (3) Independent Technical Experts from the “Listed Independent Technical Experts” to the Workgroup Chairman.
- Upon receipt from the Workgroup Chairman of the list of all unique Independent Technical Experts proposed by the Users, using the Voting Form provided, rank in order of preference (1 to n, where 1 is the least favoured and n the most favoured) and provide to the Workgroup Chairman.
- In the event of a tie, a list of all of the highest scoring Independent Technical Experts will be provided by the Workgroup Chairman, using the Voting Form provided Users will rank in order of preference (1 to n, where 1 is the least favoured and n the most favoured) and provide to the Workgroup Chairman.

The Upstream and Downstream Parties present at the meeting of the Offtake Arrangements Workgroup where the appointment process takes place will:

- Using the Nomination Form provided, nominate up to three (3) Independent Technical Experts from the “Listed Independent Technical Experts” to the Workgroup Chairman.
- Upon receipt from the Workgroup Chairman of the list of all unique Independent Technical Experts proposed by the Upstream Transporter and Downstream Transporters, using the Voting Form provided, rank in order of preference (1 to n, where 1 is the least favoured and n the most favoured) and provide to the Workgroup Chairman.
- In the event of a tie, a list of all of the highest scoring Independent Technical Experts will be provided by the Workgroup Chairman, using the Voting Form provided the Upstream Transporter will rank in order of preference (1 to n,

<sup>1</sup> Use of the term Workstream has been retained for consistency with the remainder of the document but should be taken to refer to Workgroups as defined in the Modification Rules.

**Deleted:** In the case of a relevant error for which a draft Significant Measurement Error Report has not been produced, the User process, as defined below, will be followed to appoint a second Independent Technical Expert. The Downstream Party will subsequently seek to vary the Terms of Reference for the already appointed Independent Technical Expert in line with the revised arrangements. .

**Deleted:** Where the estimated error is >500GWh; . ... [1]

**Deleted:**

**Deleted:** 4

**Deleted:** .

**Deleted:** 2

**Deleted:** 7

**Deleted:** 1

where 1 is the least favoured and n the most favoured) and provide to the Workgroup Chairman.

The Chairman of the Offtake Arrangements Workgroup will:

- Receive the completed nomination forms from Users and collate the list of nominated Independent Technical Experts (n) and provide the final selection to Users for scoring purposes.
- Receive the completed nomination forms from the Upstream Transporter and Downstream Transporters and collate the list of nominated Independent Technical Experts (n) and provide the final selection to the Upstream Transporter and Downstream Transporters for scoring purposes.
- Collate aggregated scores from Users for the nominated Independent Technical Experts.
- Collate aggregated scores from the Upstream Transporter and Downstream Transporters for the nominated Independent Technical Experts.
- In the event of a tie, provide a list of all of the highest scoring Independent Technical Experts to Users and/or the Upstream Transporter and Downstream Transporters as appropriate.
- At the completion of the voting process, propose the highest scoring User proposed Independent Technical Expert and the highest scoring (other than the User proposed Independent Technical Expert) Upstream and Downstream

Deleted: 4

Deleted: .

Deleted: 2

Deleted: 7

Deleted: 1

Transporter proposed Independent Technical Expert, to the Offtake Committee for endorsement.

Terms of Reference for the Appointed Independent Technical Experts

The Downstream Party will:

- Propose appropriate Terms of Reference (incorporating the “Generic Terms of Reference” contained within these Guidelines) for the “Appointed Independent Technical Experts” that would undertake the compilation of SMERs.

Users will:

- Where appropriate, propose amendments to the Terms of Reference proposed by the Downstream Party to ensure that they are relevant and commensurate with the type and size of the measurement error.

The Upstream Party will:

- Where appropriate, propose amendments to the Terms of Reference proposed by the Downstream Party to ensure that they are relevant and commensurate with the type and size of the measurement error.

The Offtake Arrangements Workgroup will seek to:

- Ensure that the Terms of Reference explicitly state how and when the Independent Technical Expert will report their progress back to the Offtake Arrangements Workgroup.
- Arrive at consensus, or failing this arrive at a majority view on the appropriate Terms of Reference for the appointed Independent Technical Experts to compile the SMERs.
- Propose the agreed Terms of Reference to the Offtake Committee for endorsement.

The Offtake Committee, upon receipt of the User and Upstream and Downstream Transporters’ Independent Technical Expert recommendations will:

- Endorse the recommendations of the Appointed Independent Technical Expert.
- Review the proposed Terms of Reference and approve the terms of reference for use in the SMERs, and;
- Authorise and establish an appropriate technical Workgroup or sub committee for discussions of the SMERs.

Deleted: s

Deleted: individual

Deleted: as

Deleted: two

Deleted: s

Deleted: 4

Deleted: .

Deleted: 2

Deleted: 7

Deleted: 1

Following endorsement by the Offtake Committee the Downstream Party will:

- Invite the endorsed Independent Technical Expert to take up the appointment;
- Where the favoured Independent Technical Expert does not accept the appointment, invite the next most favoured Independent Technical Expert in turn, but excluding any already invited Independent Technical Experts.
- Upon acceptance of the appointment, establish the contract with the Independent Technical Expert, including the agreed terms of reference.
- Upon confirmation that the Independent Technical Expert endorsed by the Offtake Committee are available, have no conflict of interest that prohibits their construction of the SMER, and have contracted with the Downstream Party to undertake the construction of the SMER, they will be known as the Appointed Independent Technical Expert.

Deleted: two

Deleted: s

Deleted: s

Deleted: s

Deleted: s

Deleted: s

Deleted: s

Deleted: s

Deleted: s

Deleted: s

The Appointed Independent Technical Expert will:

- Independently progress the compilation of individual SMERs in accordance with the Terms of Reference approved by the Offtake Committee, until the completion and publication of the SMERs.
- Provide full responses to all questions, technical challenges and requests for supporting data from Users, the Upstream Party and Downstream Parties. All responses should be made available in writing.

Deleted: s

Deleted: Individually and i

Deleted: without collaboration with each other

Deleted: ir independent

Deleted: <#>Each be provided with the same access to and provision of any data or information provided by the Downstream or other authorised parties. .

Users, the Upstream Party and Downstream Parties will:

- Each be able to submit questions, technical challenges and requests for supporting data to the Independent Technical Expert at any point during the process.

Deleted: <#>Upon completion and publication of their independent SMERs, convene a meeting between themselves to review and discuss the findings from their relevant SMERs along with a comparison of their relevant SMER report ... [2]

Deleted: s

Deleted: 4

Deleted: .

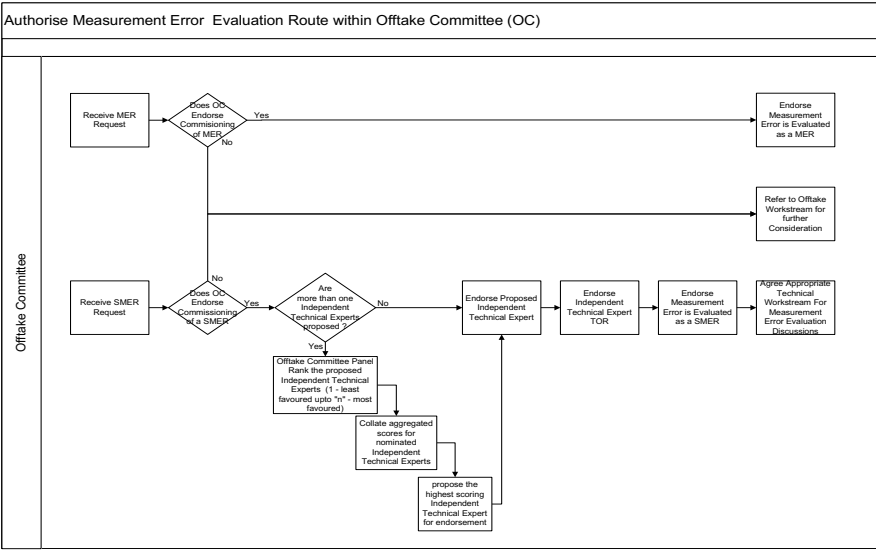
Deleted: 2

Deleted: 7

Deleted: 1



8. Business Rules for the Authorisation of the Significance of the Measurement Error by the Offtake Committee



Actions associated with a request for a Significant Meter Error Report (SMER):

- The Offtake Committee, upon the receipt of a request for a SMER, will:
    - Endorse the recommendation for the compilation of a SMER; or
    - Refer to the Offtake Arrangements Workgroup for further consideration of the Measurement Error.
  - Rank the proposed Independent Technical Experts from 1-n (1 least favoured, n most favoured) and provide the ranking to the Joint Office of Gas Transporters;
  - Collate the aggregated scores for the nominated Independent Technical Experts from the Offtake Committee review; and
  - Propose the highest scoring Independent Technical Expert for endorsement.
  - Endorse the appropriate person as the Appointed Independent Technical Expert;
  - Review the proposed terms of reference and approve terms of reference for use in this SMER; and
  - Authorise and establish an appropriate technical Workgroup or sub committee for discussions of this SMER.
- The Downstream Party will:

Deleted: <#>Upon endorsement of a SMER request, the Offtake Committee will: . ... [3]

Comment [MD4]: To be reviewed
Deleted: 4
Deleted: .
Deleted: 2
Deleted: 7
Deleted: 1

- Invite the endorsed Independent Technical Expert to take up the appointment;
- Where the favoured Independent Technical Expert does not accept the appointment, invite the next most favoured Independent Technical Expert in turn.
- Upon acceptance of the appointment, establish the contract with the Independent Technical Expert, including the agreed terms of reference.
  - Upon confirmation that the Independent Technical Expert endorsed by the Offtake Committee is available, has no conflict of interest that prohibits his construction of the SMER, and has contracted with the Downstream Party to undertake the construction of the SMER, he will be known as the Appointed Independent Technical Expert.
- Costs:
  - Each Party shall bear its own costs including without limitation costs of providing documentation, information, data, submissions or comments, and all costs and expenses of all witnesses and other persons retained by it.
  - The Appointed Independent Technical Expert's fees and expenses shall be payable by the Downstream Party.
- Conflict of Interest:
  - The Downstream Party shall confirm with The Independent Technical Expert before his/her appointment that he/she does not hold any interest or duty which would, or potentially would, conflict with the performance of his/her duties under the contract with the Downstream Party.
  - The Downstream Party shall forward any information in relation to potential conflict of interest, to the Joint Office of Gas Transporters who shall forward this to all Users and Offtake Committee Members as soon as reasonably practicable.
  - Any User or Offtake Committee Member may, within five (5) Business Days of the disclosure of any such conflict or potential conflict, object to the appointment or continued appointment of an Appointed Independent Technical Expert, in which case the Appointed Independent Technical Expert shall not be or shall cease to be appointed and a new Independent Technical Expert shall be selected and appointed by the Offtake Committee.

Deleted: s

Deleted: 4

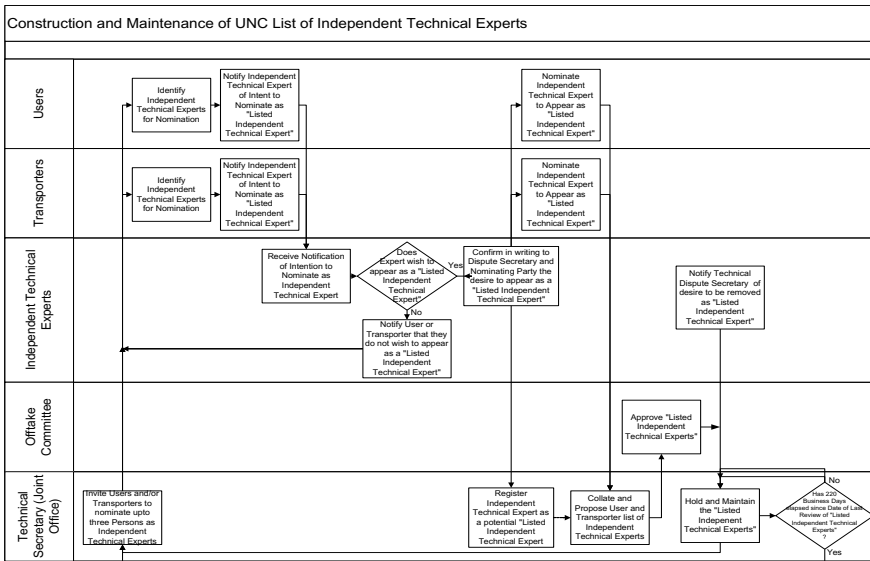
Deleted: .

Deleted: 2

Deleted: 7

Deleted: 1

## 9. Framework for Approved List of Independent Technical Experts



- The Joint Office of Gas Transporters will:
  - Invite all **“Shipper Users”** and **“Transporters”** to nominate up to three (3) persons per meter technology existing on NTS/LDZ or LDZ/LDZ boundaries to act as Independent Technical Experts.
  - Upon receipt in writing of desire of the nominee to appear as a Listed Independent Technical Expert, add to the register as a proposed Listed Independent Technical Expert.
  - Collate the Shipper User and Transporter list of proposed Listed Independent Technical Experts and forward to the Offtake Committee for approval.
  - Upon receipt of the approved Listed Independent Technical Experts from the Offtake Committee hold and maintain the register of Listed Independent Technical Experts.
  - Undertake a review of the Listed Independent Technical Experts register at least annually.
- The Offtake Committee will:
  - Upon receipt of the proposed list of Independent Technical Experts:
    - Endorse, or decline to endorse, the appropriateness of expertise; and
    - Agree the register of Listed Independent Technical Experts.
- The Independent Technical Experts will:

Deleted: 4

Deleted: .

Deleted: 2

Deleted: 7

Deleted: 1

- Confirm in writing to the Joint Office of Gas Transporters and nominating party the desire to be registered as a Listed Independent Technical Expert, or not;
- Upon desire to withdraw as a Listed Independent Technical Expert, notify the Joint Office of Gas Transporters of their wish to be removed from list.
- The Transporters will:
  - Nominate up to three (3) Independent Technical Experts per meter technology existing on NTS/LDZ or LDZ/LDZ boundaries to appear as a Listed Independent Technical Expert and notify the Joint Office of Gas Transporters.
- The Shipper Users will:
  - Nominate up to three (3) Independent Technical Experts per meter technology existing on NTS/LDZ or LDZ/LDZ boundaries to appear as a Listed Independent Technical Expert and notify the Joint Office of Gas Transporters.

#### **Independent Technical Expert List Framework**

- Name of Independent Technical Expert;
- Expert organisation;
- Area of expertise (e.g. OPM - Orifice Plate Meters, TM - Turbine Meters, USM - Ultrasonic Meters, CoM - Coriolis Meters, C - Chromatographs);
- Date of first registration;
- Date of last review;
- Renewal date:
  - Auto-populated based on one (1) Calendar Year from “date of last review”; and
- Associated business rules:
  - The List must contain more than one (1) Independent Technical Expert for each area of expertise.

Deleted: 4
Deleted: .
Deleted: 2
Deleted: 7
Deleted: 1

## 10. Generic Terms of Reference for an Appointed Independent Technical Expert

- Compile a SMER using the most appropriate data and methodologies to ensure that as accurate an error assessment of the **“Measured Data”** can be made in an economic and efficient manner reflecting the size of the error.
- The Appointed Independent Technical Expert shall be expected to comply with the terms of reference defined for the Specific Measurement Error.
- The Appointed Independent Technical Expert shall be expected to provide updates to the Workgroup, in accordance with the workplan determined by the workgroup. This update will include a summary of developing methodologies, technical issues relevant queries raised, data requests submitted and evidence requested.
- The Appointed Independent Technical Expert will determine and consider which, if any, **“Technical Measurement Issues”** submitted will have a material effect on any critical data item connected with the identified Measurement Error. For all such issues, the Appointed Independent Technical Expert will evaluate their contributions to the determination of the magnitude of error in the Measured Data.
- The decision as to the most appropriate methodologies and data will rest solely with the Appointed Independent Technical Expert taking account of any Technical Measurement Issues raised during the development and compilation of the SMER.
- The decision as to when the SMER is a robust technical evaluation of the magnitude of error in Measured Data will rest solely with the Appointed Independent Technical Expert
- The Appointed Independent Technical Expert will present the SMER, in draft form, to the authorised Workgroup and will review all the Technical Measurement Issues identified.
- The Appointed Independent Technical Expert will determine what data is required from the relevant Transporters in order to ensure appropriate data supports the evaluation of the error in the Measured Data.
- The Appointed Independent Technical Expert will determine what supporting evidence is required from the relevant Transporters in order to support the appropriate methodologies and data in the evaluation of the error in Measured Data.
- The Appointed Independent Technical Expert will determine what relevant questions should be submitted to the relevant Transporters in order to ensure appropriate methodologies and data are used in the evaluation of error in Measured Data.

**Deleted:** at least monthly

**Deleted:** technical

**Deleted:** or sub committee authorised to discuss the relevant Measurement Error

**Deleted:** identified (all received within five (5) Business Days of the meeting to be reviewed).

**Deleted:** technical

**Deleted:** or sub committee

**Deleted:** 4

**Deleted:** .

**Deleted:** 2

**Deleted:** 7

**Deleted:** 1

- The Appointed Independent Technical Expert will provide the final SMER to the Downstream Party in the following template for publication:
  - Executive Summary
    - Site name;
    - DNO;
    - LDZ;
    - Error start date;
    - Error corrected date;
    - Size of error (over or under read);
    - Error description; and
    - Meter type.
    - MER/SMER Unique Reference Number;
  - Compiled by;
  - Error Description;
  - Methodology; and
  - Error quantification

If, after their appointment the Appointed Independent Technical Expert becomes aware of any interest or duty which conflicts or potentially conflicts with the performance of their duties under his contract with the Downstream Party, the Appointed Independent Technical Expert shall inform the Downstream Party forthwith of such conflict giving full details thereof.

Formatted: No bullets or numbering

Deleted: 4
Deleted: .
Deleted: 2
Deleted: 7
Deleted: 1

11. Framework for the Technical Workgroup or Sub Committee Meeting

- The Appointed Independent Technical Expert will:
  - Provide an update on the measurement issue;
  - Review Technical Measurement Issues raised up to five (5) Business Days prior to the Workgroup meeting on the “Technical Measurement Issues Log (TMIL)” in the meeting; and
  - Make a decision on the requirement for a further meeting prior to producing the SMER.

Users and Transporters will:

- Submit Technical Measurement Issues to the Joint Office of Gas Transporters that may impact a critical data item affected by the identified Measurement Error.
- The Joint Office of Gas Transporters will:
  - Capture Technical Measurement Issues on the TMIL.

**Deleted:** <#>Where there are two Appointed Independent Technical Experts any update or presentation provided to any relevant group, Workgroup or committee should be made separately and independently. .

**Deleted:** <#>technical

**Deleted:** <#>or sub committee

**Deleted:** <#> Where there are two Appointed Independent Technical Experts, separate TMIL’s should be kept for each ITE. .

**Deleted:** 4


**Deleted:** .

**Deleted:** 2

**Deleted:** 7

**Deleted:** 1

12. Framework for the Final Meeting where the Appointed Independent Technical Expert in conjunction with the Downstream Party presents the Methodology and Data employed in the SMER

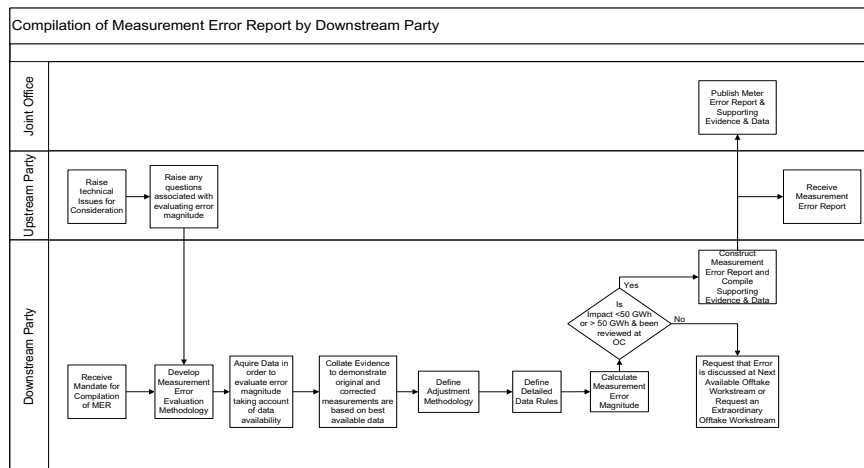
1. Provide an overview of the methodology used in the calculation of the revised measurements;
2. 
3. Present the data rules employed in the calculation of the revised measurements;
4. Review all items on the TMIL and the reasons for accounting for/discounting; and
5. Present the corrected end of day correction factor to five decimal places.

**Deleted:** Where there are two Appointed Independent Technical Experts, the presentation of any material should be undertaken separately and independently until such time as the individual SMER's have been completed and published

**Deleted:** 4  
**Deleted:** .  
**Deleted:** 2  
**Deleted:** 7  
**Deleted:** 1



### 13. Business Rules for the Compilation of a Measurement Error Report



- The MER:
  - Is compiled by the Downstream Party;
  - All data and evidence gathered in order to compile the MER will be construed to be auditable records;
  - Will define the magnitude of the Measurement Error for every Day within the error period; and
  - Will give the total net error magnitude as a volume and will specify if it represents an over or under registration.
- The Downstream Party will:
  - Define the technical methodology to derive a robust evaluation of the magnitude of Measurement Error that is economic and efficient;
  - Be responsible for undertaking the calculation of the Measurement Error in accordance with the technical methodology, to the appropriate tolerances and in accordance with the defined data rules;
  - Define the data requirements for accurate evaluation of the error magnitude;
  - Define the evidence required to demonstrate that the original and corrected measurements are based on the best available data;
  - Define the duration of the Measurement Error period;
  - Be required to provide detailed data rules;
  - Be responsible for acquiring the data for the evaluation of the error magnitude in a timely manner;
  - Be required to acquire in a timely manner the evidence to demonstrate that the original and corrected measurements are robust; and

Deleted: 4

Deleted: .

Deleted: 2

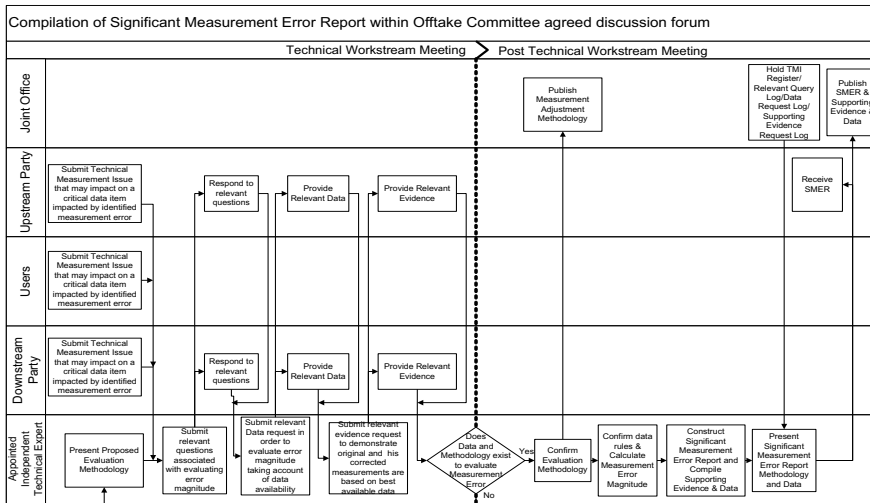
Deleted: 7

Deleted: 1

- Provide the Joint Office of Gas Transporters with the completed MER.
- The Upstream Party will:
  - Be required in a timely manner to notify to the Downstream Party any technical issues that may impact upon the methodology or data to be employed in the evaluation of the error;
  - Be required to provide the Downstream Party with any reasonable data necessary in order to evaluate the Measurement Error; and
  - Receive the Measurement Error Report.
- The Joint Office of Gas Transporters will:
  - Be required to publish Measurement Error Reports notified to it by the Downstream Party.

Deleted: 4
Deleted: .
Deleted: 2
Deleted: 7
Deleted: 1

## 14. Business Rules for the Compilation of a Significant Measurement Error Report



- The SMER:
  - Is compiled by the Appointed Independent Technical Expert approved by the Offtake Committee;
  - All data and evidence required by the Appointed Independent Technical Expert in order to compile the SMER will be construed to be auditable records;
  - Will define the magnitude of the Measurement Error for every Day within the Measurement Error period; and
  - Will give the total net Measurement Error magnitude as a volume and will specify if it represents an over or under registration.
- The Effect of Determination:
  - The Appointed Independent Technical Expert's final determination shall (unless given after the appointment of another expert) be final and binding on the Parties except in the event of fraud or where the Offtake Committee considers it is so clearly erroneous on its face that it would be unconscionable for it to stand, in which case another Independent Technical Expert may be appointed.
  - Except as provided in the paragraph above, no Party shall commence proceedings in respect of or refer to any court any finding by the Appointed Independent Technical Expert, whether made at any time after his appointment or in his determination.
- The Appointed Independent Technical Expert will:
  - Define the technical methodology to derive a robust evaluation of the magnitude of Measurement Error that is economic and efficient;

Deleted: 4
Deleted: .
Deleted: 2
Deleted: 7
Deleted: 1

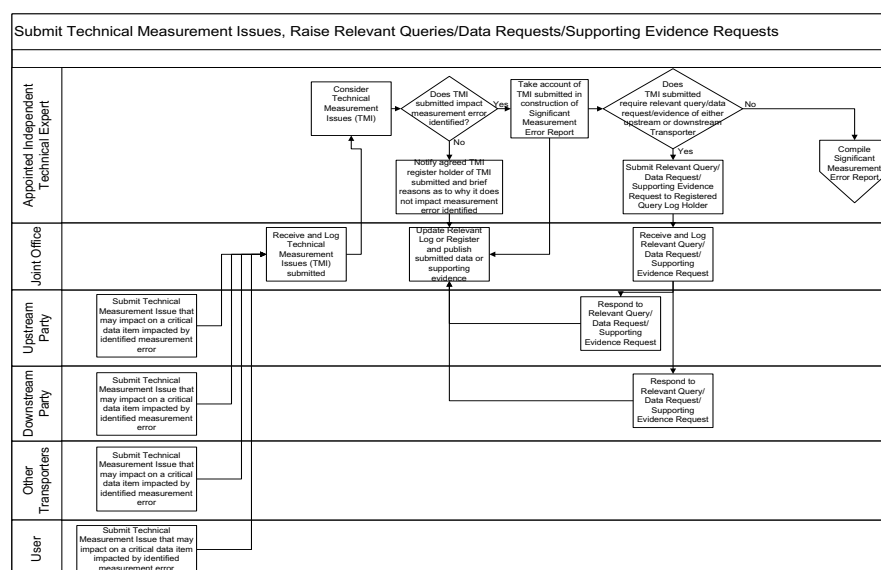
- Define the data requirements for accurate evaluation of the Measurement Error magnitude;
- Be required to provide detailed data rules;
- Define the evidence required to demonstrate that the original and corrected measurements are based on the best available data;
- Define any deficiencies identified in the collation of information or data;
- Define the duration of the Measurement Error period;
- Be responsible for applying the defined methodology and data rules to quantify the Measurement Error;
- Present proposed evaluation methodology to the technical Workgroup or sub committee authorised by the Offtake Committee; and
- Review all technical measurement issues raised.
- The Downstream Party will be:
  - Responsible for providing in a timely manner the data requested by the Appointed Independent Technical Expert for the evaluation of the Measurement Error magnitude;
  - Required to provide in a timely manner the evidence the Appointed Independent Technical Expert has requested to demonstrate that the original and corrected measurements are robust ; and
  - Required to answer technical questions raised by the Appointed Independent Technical Expert associated with the evaluation of the Measurement Error.
- The Upstream Party will be:
  - Required to notify the Appointed Independent Technical Expert in a timely manner of any technical issues that may impact upon the methodology or data to be employed in the evaluation of the Measurement Error;
  - Responsible for providing in a timely manner the data requested by the Appointed Independent Technical Expert for the evaluation of the Measurement Error magnitude; and
  - Required to answer technical questions raised by the Appointed Independent Technical Expert associated with the evaluation of the Measurement Error.
- Users will be:
  - Required to notify the Appointed Independent Technical Expert in a timely manner of any technical issues that may impact upon the methodology or data to be employed in the evaluation of the Measurement Error;
- The Joint Office of Gas Transporters will be:
  - Required to publish evaluation methodologies and SMERs sent to it by the Appointed Independent Technical Expert.

**Comment [d5]:** Timescales need to be agreed and included in the document

**Comment [d6]:** Timescales need to be agreed and included in the document

Deleted:	4
Deleted:	.
Deleted:	2
Deleted:	7
Deleted:	1

## 15. Framework for Technical Issues, Relevant Queries, Data Requests and Supporting Evidence Requests



## Technical Measurement Issue Framework

- Submitting Party;
- Submitting Party contact details;
  - Name;
  - Business number;
  - Mobile number;
  - Email address; and
  - Fax number.
- Technical measurement issue description;
- Anticipated impact on critical data item used in evaluation of Measurement Error magnitude; and
- Date of submission.

## Technical Measurement Issue Log

- Unique “**Query Issue ID**”;
- Submitting Party;
- Submitting Party contact details;

Deleted: 4

Deleted: .

Deleted: 2

Deleted: 7

Deleted: 1

- Name;
- Business number;
- Mobile number;
- Email address; and
- Fax number.
- Technical Measurement Issue description;
- Anticipated impact on critical data item used in evaluation of Measurement Error magnitude;
- Date of submission;
- Technical Measurement Issue status (accepted by Appointed Independent Technical Expert, or rejected by Appointed Independent Technical Expert);
- Acceptance reason (brief narrative of reason why submitted Technical Measurement Issue would materially impact the error assessment);
- Rejection reason (brief narrative of reason why submitted Technical Measurement Issue would not materially impact the error assessment); and
- Date of rejection.

#### Appointed Independent Technical Expert Relevant Query Framework

- Date query submitted;
- Linkage to previous queries raised;
- Target Party for query (Upstream Party and/or Downstream Party); and
- Nature of query (a technical measurement question associated with the Measurement Error identified at the relevant measurement station which may impact the evaluation of Measurement Error).

#### Appointed Independent Technical Expert Relevant Query Log

- Unique “Query ID”;
- Date query submitted;
- Linked Query IDs;
- Target Party for query (Upstream Party and/or Downstream Party);
- Nature of query;
- Query response;
- Query status (query submitted, awaiting response, responded); and
- Date of query response.

Deleted: 4
Deleted: .
Deleted: 2
Deleted: 7
Deleted: 1

#### Appointed Independent Technical Expert Data Request Framework

- Date data request submitted;
- Linkage to previous data requests raised;
- Target Party for data request (Upstream Party and/or Downstream Party);
- Data requested (technical measurement data associated with the Measurement Error identified at the relevant measurement station which may impact the evaluation of Measurement Error); and
- Required data format.

#### Appointed Independent Technical Expert Relevant Data Request Log

- Unique “Data Request ID”;
- Date data request submitted;
- Linked Data Request IDs;
- Target Party for the data request (Upstream Party and/or Downstream Party);
- Data requested;
- Data request status (data request submitted, awaiting response, retrieving data, data supplied and published, data unavailable);
- Anticipated data acquisition date (for data request status ‘retrieving data’ only);
- Data availability reason (for data request status ‘retrieving data’ and ‘data unavailable’); and
- Date of data supply.

#### Appointed Independent Technical Expert Supporting Evidence Request Framework

- Date supporting evidence request submitted;
- Linkage to previous supporting evidence requests raised;
- Target Party for supporting evidence request (Upstream Party and/or Downstream Party); and
- Supporting evidence requested (technical supporting evidence which supports the evaluation of the Measurement Error).

#### Appointed Independent Technical Expert Supporting Evidence Request Log

- Unique “Supporting Evidence Request ID”;
- Date supporting evidence request submitted;
- Linked Supporting Evidence Request IDs;
- Target Party for the supporting evidence request (Upstream Party and/or Downstream Party);
- Supporting evidence requested;

Deleted: 4

Deleted: .

Deleted: 2

Deleted: 7

Deleted: 1

- Supporting evidence request status (supporting evidence request submitted, awaiting response, supporting evidence supplied and published, supporting evidence unavailable);
- Supporting evidence unavailable reason; and
- Date of supporting evidence supply.

**Comment [NG7]:** I feel sure it must be possible to simplify this maybe even remove it.

Deleted: 4

Deleted: .

Deleted: 2

Deleted: 7

Deleted: 1



**16. Publication of Evaluation Methodology for Significant Measurement Error Report**

- The Appointed Independent Technical Expert will:
  - Provide the evaluation methodology for a SMER for publication.
- The Joint Office of Gas Transporters will:
  - Publish the evaluation methodology for a SMER on the Joint Office of Gas Transporters' website.

**17. Publishing Significant Measurement Error Reports**

- The Appointed Independent Technical Expert will:
  - Provide the SMER for publication in the appropriate template in accordance with the terms of reference.
- The Downstream Party will:
  - Ensure the publication of the SMER.
- The Joint Office of Gas Transporters will:
  - Publish the SMER on the Joint Office of Gas Transporters' website.

**18. Publishing Measurement Error Reports**

- The Downstream Party will:
  - Provide the MER for publication.
- The Joint Office of Gas Transporters will:
  - Publish the MER on the Joint Office of Gas Transporters' website.

Deleted: 4

Deleted: .

Deleted: 2

Deleted: 7

Deleted: 1

Where the estimated error is >500GWh;

There will be a requirement for two Independent Technical Experts to be appointed.

One Independent Technical Expert will be appointed by Users, the other Independent Technical Expert will be appointed by Downstream and Upstream parties.

Upon completion and publication of their independent SMERs, convene a meeting between themselves to review and discuss the findings from their relevant SMERs along with a comparison of their relevant SMER reports.

The Independent Technical Experts will produce a summary report which will identify any material differences in individually reported correction figures, the processes employed and the data used, and propose a single conclusion together with the justification for that conclusion.

The summary report will be the single agreed SMER outcome, referring back to the two individual reports as appropriate. The individual SMER reports are not to be modified at this stage, however both the summary report and individual SMERs will be presented to Users, the Upstream Party and Downstream Parties for review and technical challenge.

In the event that the Independent Technical Experts cannot propose a single conclusion, it will be the role of the Workgroup to: review the technical data presented within the individual SMER reports; review the summary report identifying any material differences in the individually reported correction figures and review the reasons provided by the Independent Technical Experts as to why a single conclusion cannot be reached; and to agree the most appropriate approach to resolve the matter in accordance with a 'defined methodology'.<sup>1</sup>

Upon endorsement of a SMER request, the Offtake Committee will:

Where more than one (1) Independent Technical Expert is proposed:

---

<sup>1</sup> It is recommended that should this proposal be approved, a 'defined methodology' should be developed urgently by the Offtake Workstream for approval by the UNC Committee