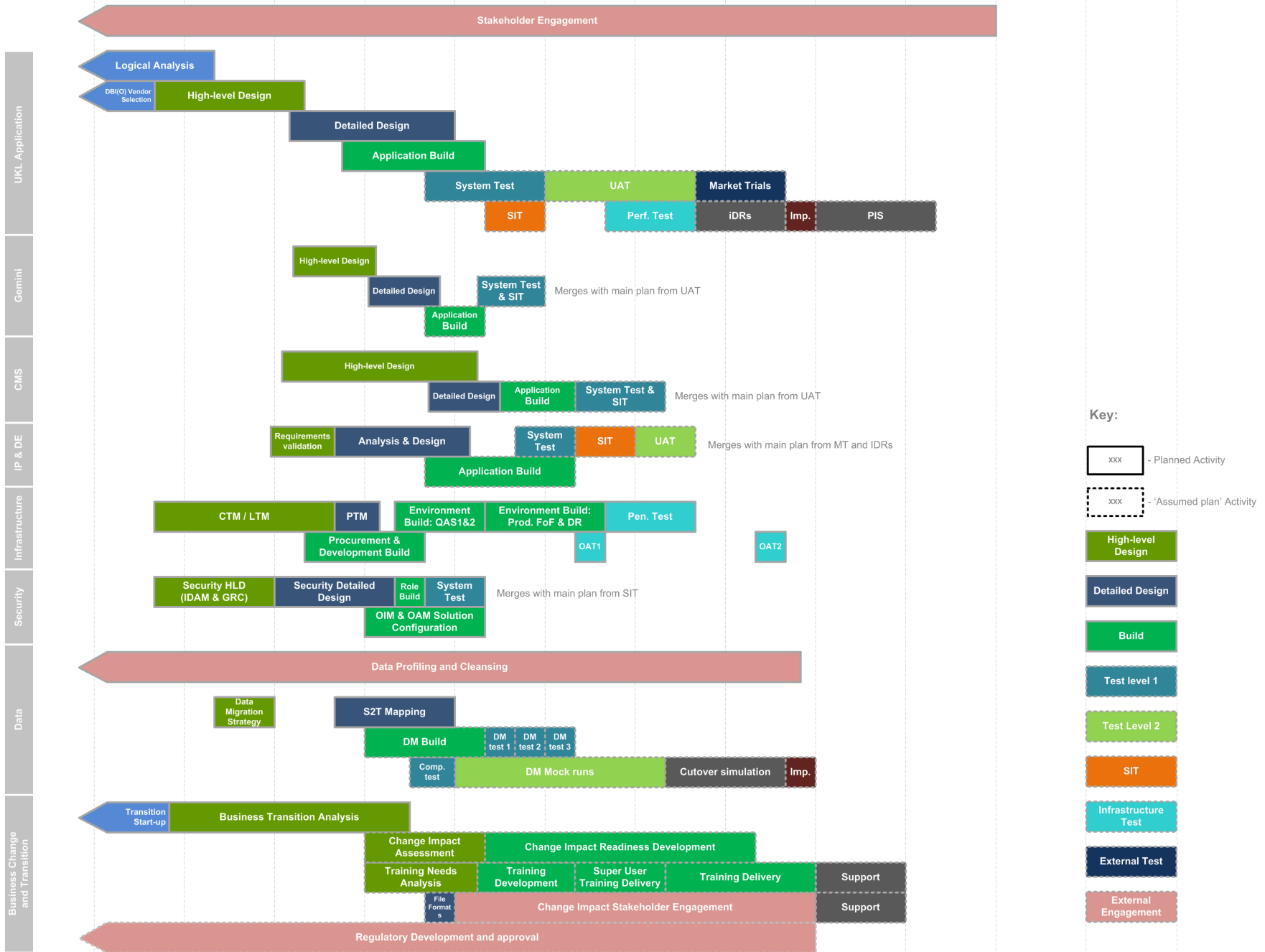




UKLP Programme Plan

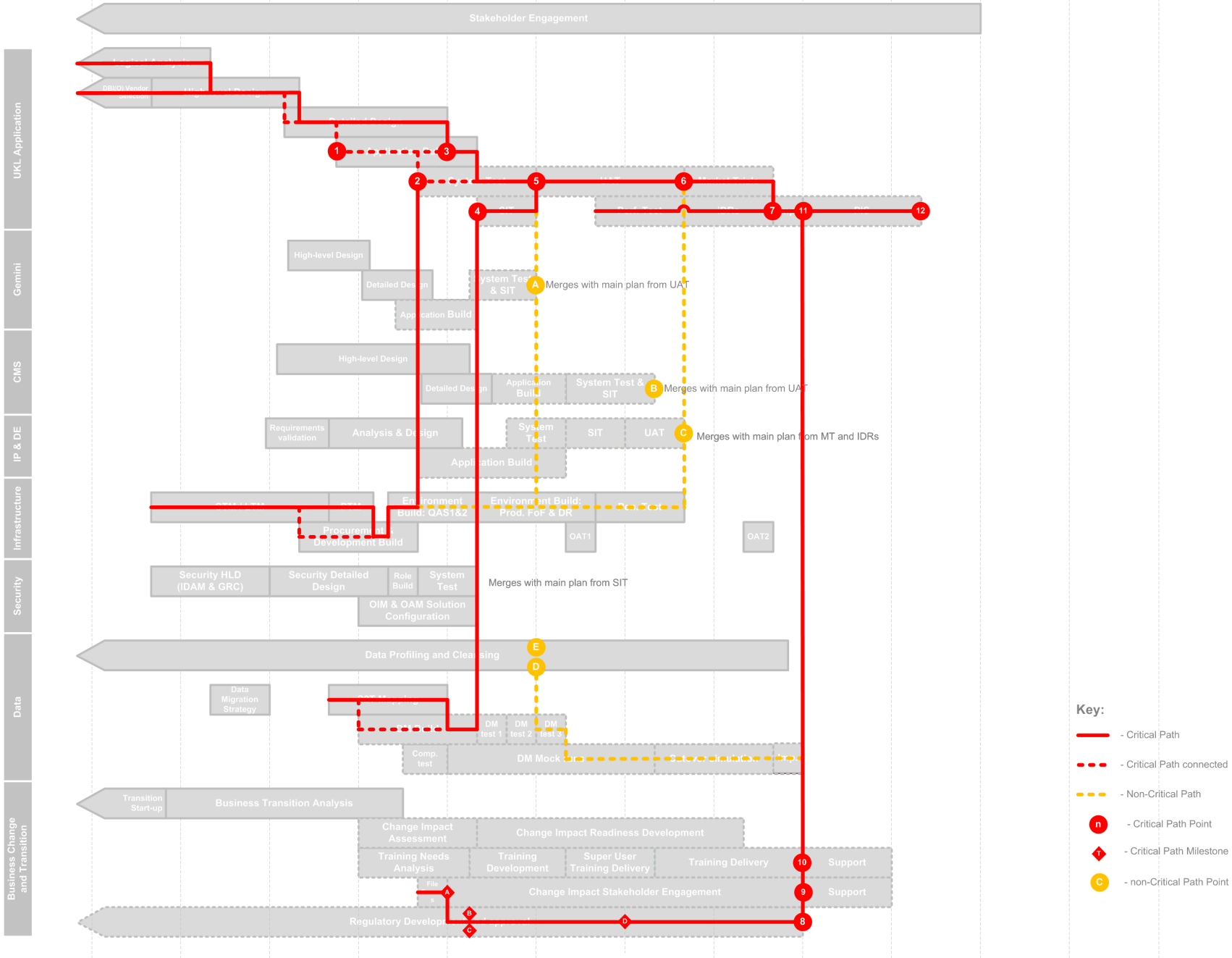
Critical Path Overview



Key:

- xxx - Planned Activity
- xxx - 'Assumed plan' Activity

- High-level Design
- Detailed Design
- Build
- Test level 1
- Test Level 2
- SIT
- Infrastructure Test
- External Test
- External Engagement



Critical Path Points

ID	Critical Path	Non-Critical Path
1	Sufficient completion of Functional Specifications required to commence Application Build.	
2	Provision of QAS1 environment and sufficient Application Build required to commence System Test	
3	Completion of Functional Specifications and 'out the box' configuration definition required to conclude Application Build.	
4	Completion of Data Migration required to commence SIT	Provision of QAS2 environment and completion of sufficient Application Build required to commence SIT
5	Completion of System Test and SIT required to commence UAT	Provision of Pre-production environment required to commence UAT
6	Completion of UAT required to commence Market Trials	Provision of (to-be) Production environment and penetration testing completion required to commence Market Trials
7	Completion of Market Trials required to enable code baseline to commence final cutover preparation	
8	Regulatory process completion	
9	Stakeholder Readiness	
10	Xoserve Readiness	
11	Implementation Dress Rehearsals, Cutover preparation activities, Stakeholder readiness, regulatory process completion and Xoserve Readiness required to commence Cutover	
12	Sufficient completion of 'First runs', system stability and stakeholder satisfaction required to conclude PIS	

Note: this is current critical path and not all dependencies are hard; i.e. some elements could move and whilst the dependencies would remain, the critical path would change

Critical Path Milestones

ID	Critical Path Milestones	Target Date
A	File Formats provided	30/9/14
B	iGT modifications approved	31/10/14
C	File Formats approved (NB additional UKLC meetings to be scheduled as required)	31/10/14
D	Transition modifications, implementation date and cutover outage window approved	31/3/15

Note: this is current critical path and not all dependencies are hard; i.e. some elements could move and whilst the dependencies would remain, the critical path would change

Important Non-Critical Path Points

ID	Non-Critical Path Item
A	Gemini application development stream completion of System Test and SIT required to join main UAT at start
B	CMS application development stream completion of System Test and SIT required to join main UAT at mid point
C	IP / DE completion of UAT required to join main Market Trials
D	Cleansed data required to enable completion of Data Migration testing and commencement of DM cutover simulation
E	Initial receipt of data from iGTs