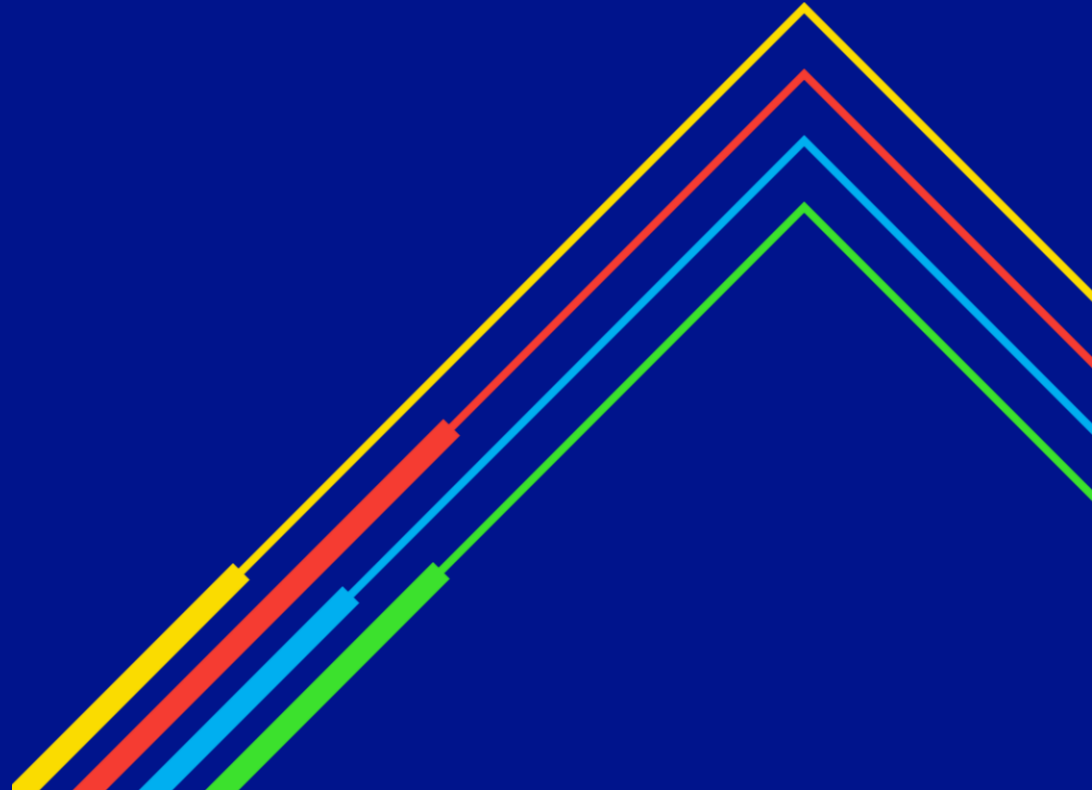


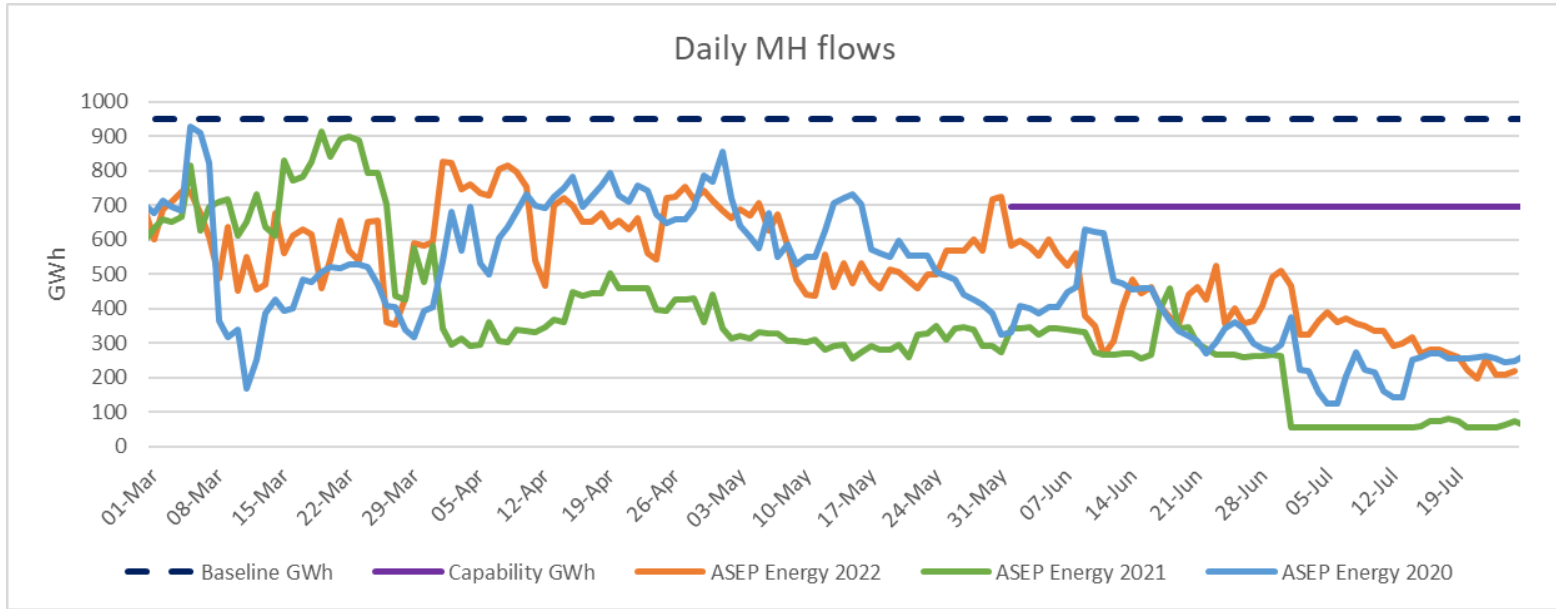
Milford Haven Risk

Transmission Workgroup
4th August 2022

nationalgrid



Capacity booked and flows



Options	Status
1. Improve communication between NGG and Sub-Terminals/Shippers	<p>Agreed in principle.</p> <p>Would support business as usual (i.e. capacity would be released up to baseline, constraints managed with existing tools).</p> <p>NGG's limited reactivity to a forecasted constraint.</p>
2. Agree cargo delivery plan between NGG and Sub-Terminals/Shippers	<p>Not progressed due to commercial sensitivities of potential impacts.</p>
3. Cap on buybacks	<p>In development. Concerns about raising the cost for customers and consumers.</p>
4. Seasonal baseline at Milford Haven ASEP only	<p>On hold; wider implications being considered.</p>
5. Turn-down contracts	<p>To be decided closer to the time (part of business as usual).</p>
6. Increase overrun penalty in a constraint scenario	<p>On hold; potentially to be developed once the primary change, if any, has been agreed on.</p>

national**grid**