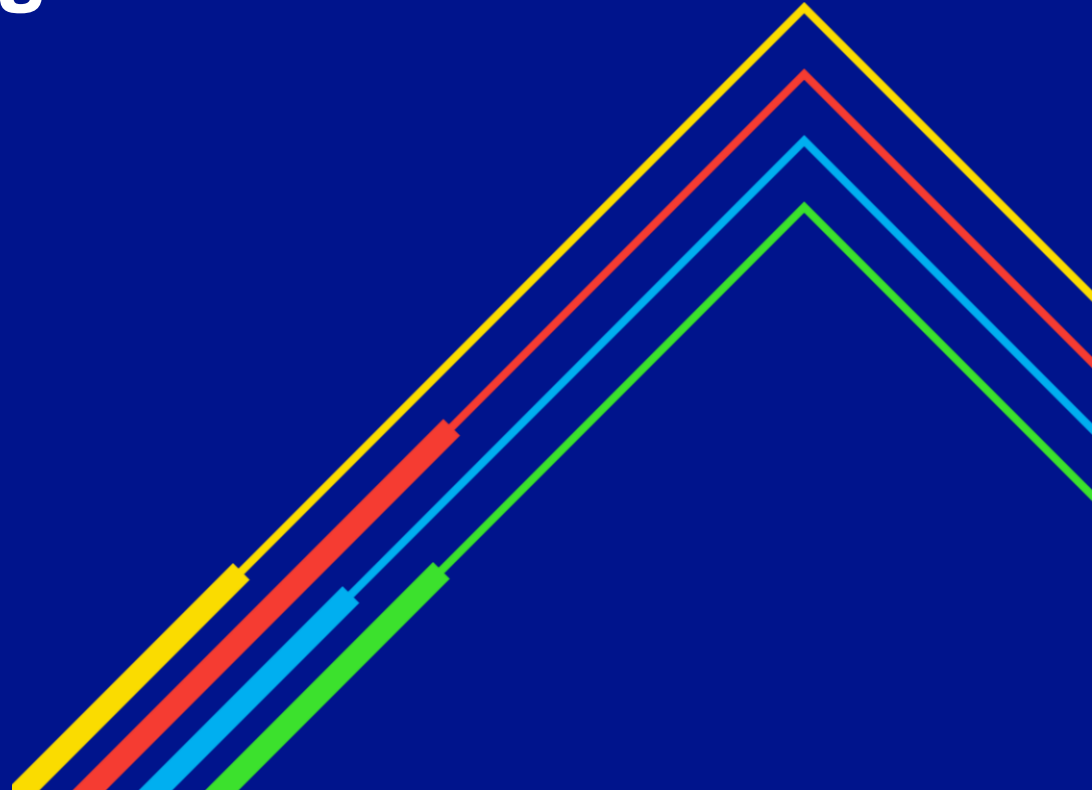


Overruns Reporting

Transmission Workgroup
1st April 2021

national**grid**



Summary of data (October 2020 – January 2021)

Entry	No of Overruns	Charge Quantity (mcm)	Charge Amount (£)	No of Users	No of ASEPs
Oct-20	319	10.84	270,470.21	31	9
Oct-19	129	3.40	34,373.94	21	8
Nov-20	369	15.83	442,615.19	25	8
Nov-19	98	3.77	10,749.94	17	9
Dec-20	403	7.63	180,741.39	26	10
Dec-19	123	5.41	35,823.08	18	7
Jan-21	379	8.73	203,889.59	23	8
Jan-20	200	6.64	69,319.21	25	10
Total to date 20/21*	1470	43.02	1,097,716.38		
Total to date 19/20*	550	19.23	150,266.17		

Exit	No of Overruns	Charge Quantity (mcm)	Charge Amount (£)	No of Users	No of Offtakes
Oct-20	141	14.52	182,525.67	17	30
Oct-19	1	0.21	2,874.67	1	1
Nov-20	173	15.24	189,860.56	20	31
Nov-19	0	-	0.00	0	0
Dec-20	185	15.36	185,170.44	22	33
Dec-19	0	-	0.00	0	0
Jan-21	142	10.25	131,626.60	17	31
Jan-20	2	0.02	1.32	1	2
Total to date 20/21	641	55.36	689,183.27		
Total to date 19/20	3	0.23	2,875.99		

national**grid**