

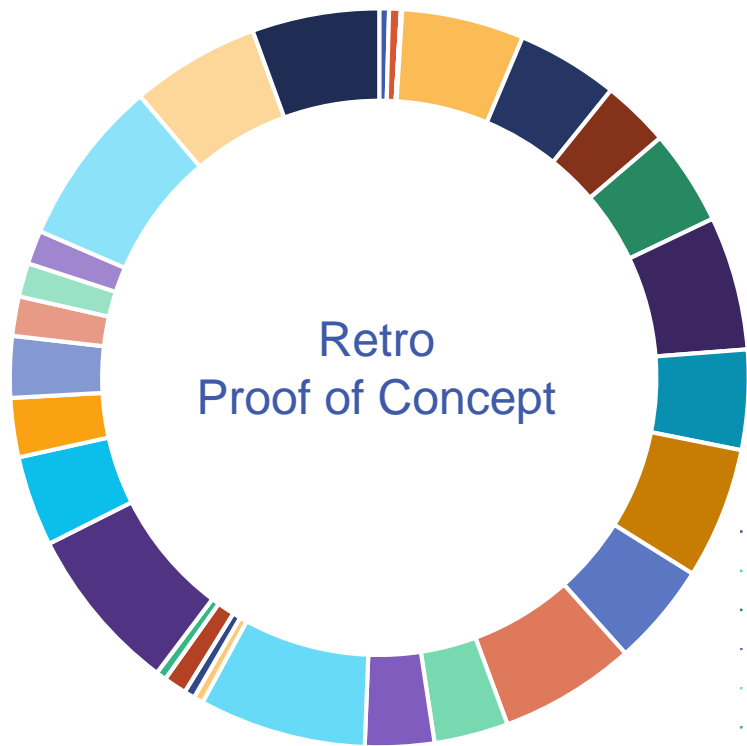


## **Retro Proof of Concept**

### **Step 2**

## **Deep Dive Analysis – Key Findings**

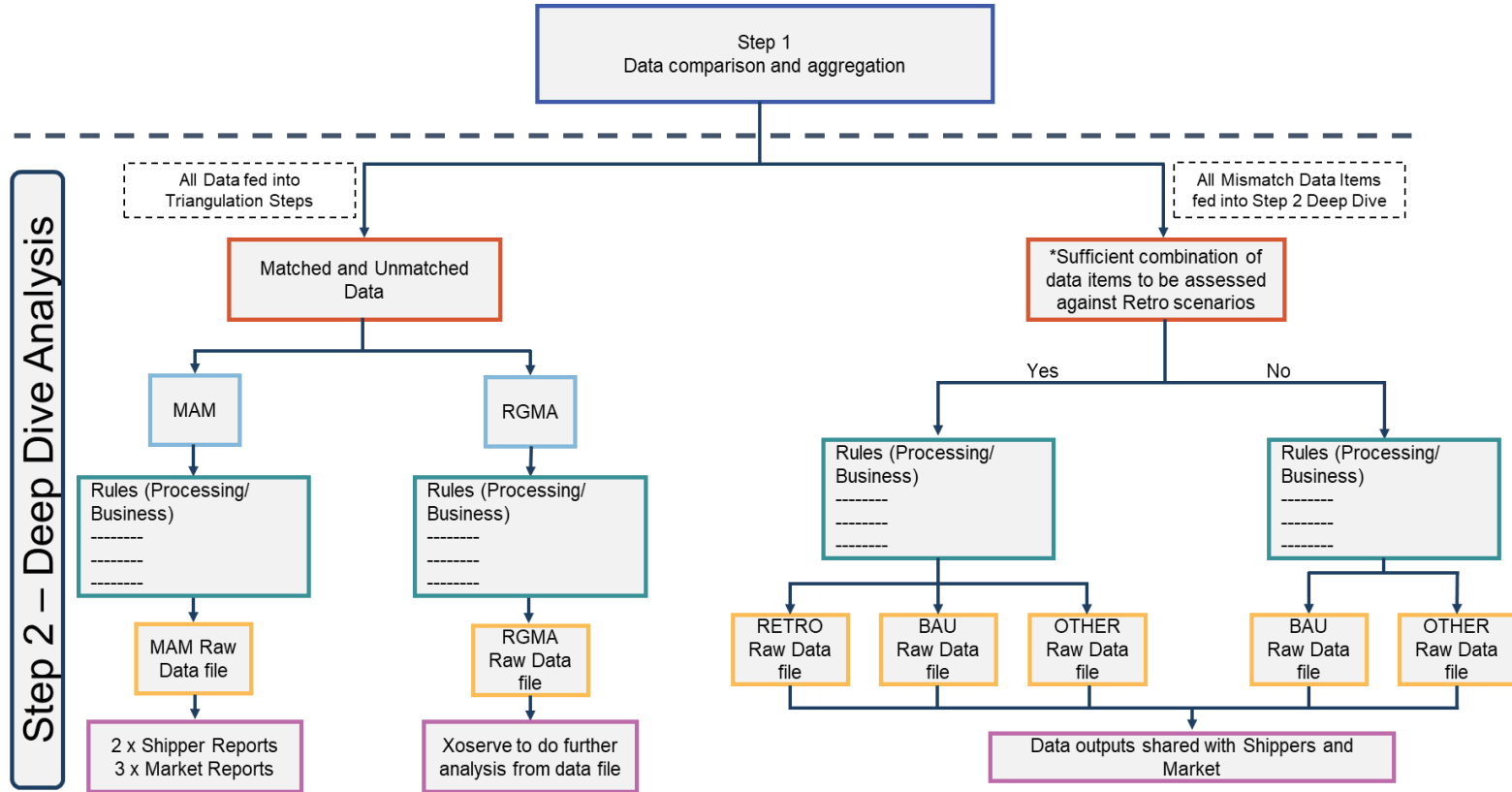
# What have we done with the Retro PoC



- 9 Shipper participating in the Proof of Concept
- 9.7m MPRNs received
- 133m data items provided across 31 data fields
- This pack details the results from **Step 1** 'Comparison and Aggregation' of the levels and types of data mismatches identified
- Step 2 'Deep Dive' analysis will investigate the impact & root cause of the Retro Assessable mismatches

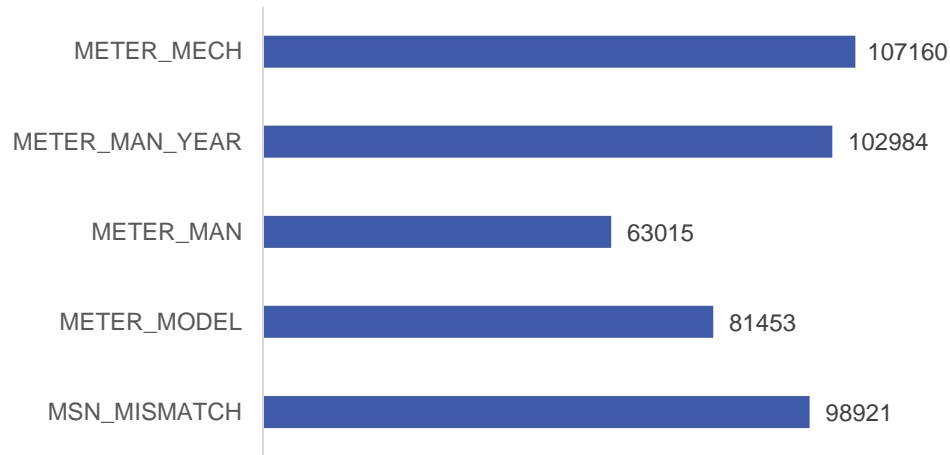
|                           |                           |                               |                        |
|---------------------------|---------------------------|-------------------------------|------------------------|
| • AMR_INDICATOR           | • COLLAR_STATUS           | • CONVERTOR_MANUFACTURER      | • CONVERTOR_MODEL      |
| • CONVERTOR_SERIAL_NUMBER | • CORRECTION_FACTOR       | • MARKET_SECTOR_CODE          | • MEASURING_CAPACITY   |
| • METER_INSTALLATION_DATE | • METER_MANUFACTURED_YEAR | • METER_MANUFACTURER_CODE     | • METER_MECHANISM_CODE |
| • METER_MODEL             | • METER_MODEL_NO_OF_DIALS | • METER_MULTIPLICATION_FACTOR | • METER_PAYMENT_METHOD |
| • METER_POINT_REFERENCE   | • METER_PULSE_VALUE       | • METER_READ_INDEX            | • METER_REMOVAL_DATE   |
| • METER_ROUND_THE_CLOCK   | • METER_SERIAL_NUMBER     | • METER_STATUS                | • METER_TYPE           |
| • NON_OPENING_CYCLIC_READ | • PRODUCT_ID              | • READ_DATE                   | • READ_TYPE            |
| • SHIPPER_SHORT_CODE      | • SUPPLIER_SHORT_CODE     | • UNITS_OF_MEASURE            |                        |

# What Happened Next?



# Findings – Trend between mismatched metering details indicate approx. 100,000 in 9.5million

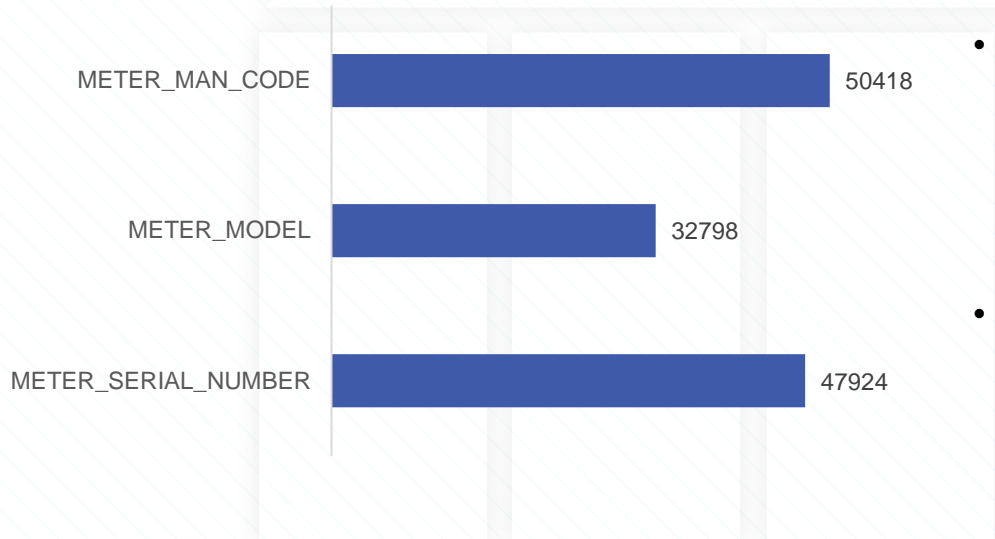
Key Meter Technical Items



- The number of mismatched MSNs broadly aligns with the number of mismatches against other key meter technical details
- 100,000 in 9.5million equates to 1.05% mismatch ratio
- MSN is an item which is used to validate meter readings
- PoC unable to identify whether associated MPRNs are failing to provide regular meter readings due to misaligned MSN details

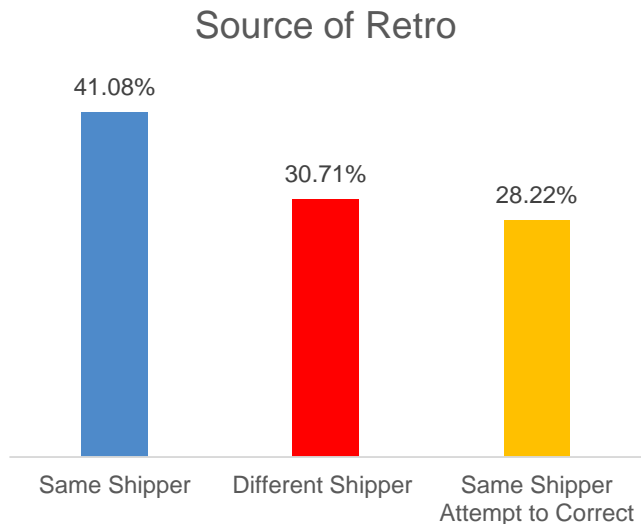
# Findings : MAM comparison identified further mismatches against Shipper and UK Link data

## Additional MAM Comparison Misalignment



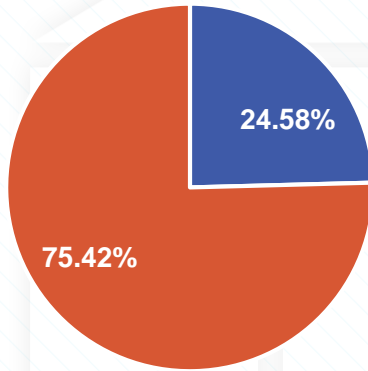
- This information provides further insight into the wider industry data position
- The approx. 50,000 misalignments identified below either conflict with data we successfully matched against shipper and UK Link, or contradict the mismatches that Shippers have provided in the PoC
- This insight is being provided to illustrate any UK Link <> Shipper exercise would not be capable of resolving these additional misalignments

# Findings: More mismatches were created in the same Shippers ownership than outside of it



- Our insight demonstrates there is benefit in more emphasis being placed on getting the data right at source – given the number of mismatches identified that were actioned whilst in the same Shippers ownership
- Where data misaligns or is not updated following metering activity this is not monitored or reported on
- Where a new Shipper takes ownership of incorrect details it can take a while for these mismatches to be identified
- In addition, despite taking corrective action, often not all mismatched data items are corrected

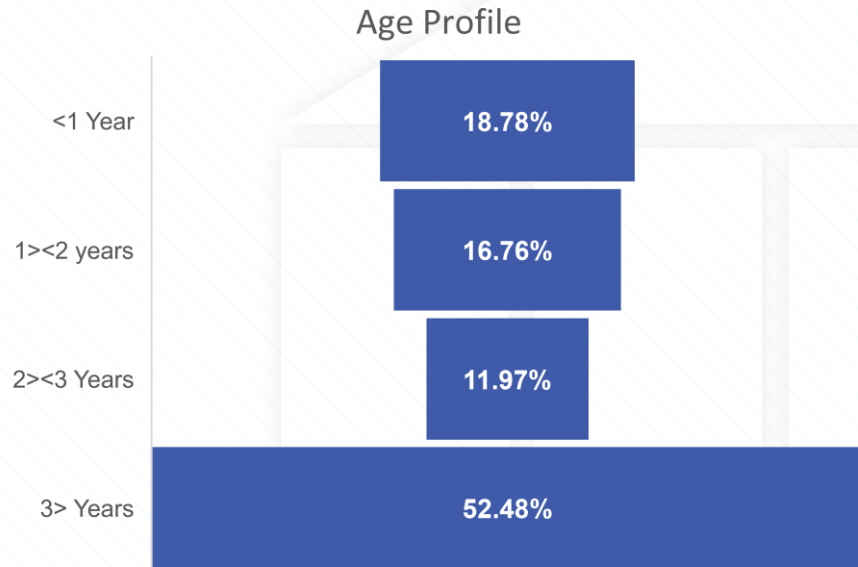
# Findings : Billing Critical Analysis inconclusive



■ Billing Critical Difference   ■ Non Billing Critical Difference

- Analysis indicates approx. 25% of mismatches may relate to difference in billing critical data items
- It is unclear to what extent this is impacting the associated MPRNs from being settled and balanced accurately
- If corrections were to be applied to these items historically, equal and opposite impacts would be felt by the wider community

# Finding : A high proportion of mismatches are greater than 12 months old

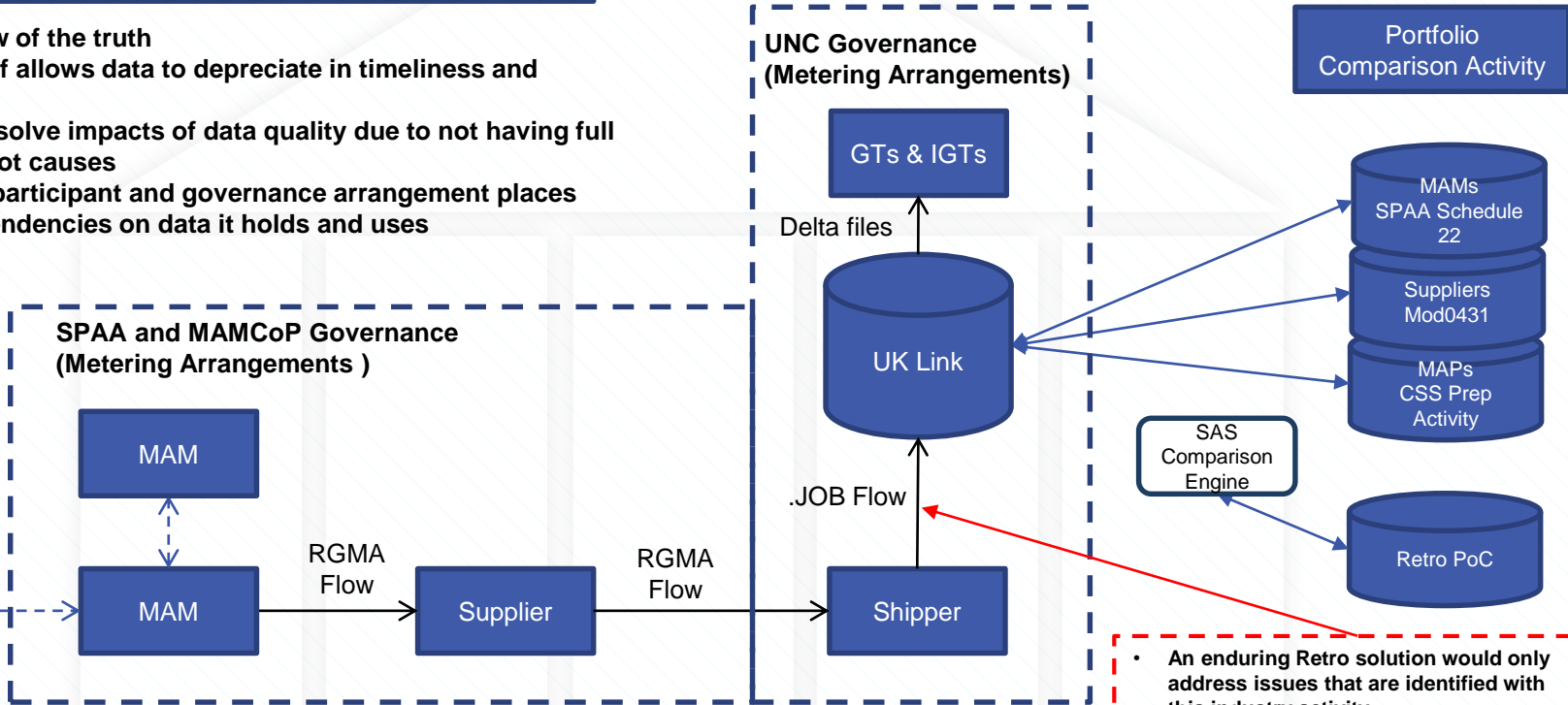


- Insight demonstrates there are a higher proportion of mismatches that originate from metering activity that was performed over 12 months ago
- Analysis able to confirm that meter readings have been received since metering activity has taken place
- Without further analysis of metering data and consumption history we are unable to identify what impact, if any, this mismatches may have



# As – Is Industry Asset Data Arrangements

- No single view of the truth
- Every hand off allows data to depreciate in timeliness and accuracy
- Not able to resolve impacts of data quality due to not having full visibility of root causes
- Each market participant and governance arrangement places different dependencies on data it holds and uses



- An enduring Retro solution would only address issues that are identified with this industry activity
- Any data we retrospective correct will have an equal and opposite impact on other customers
- PoC has helped quantify the size of problem

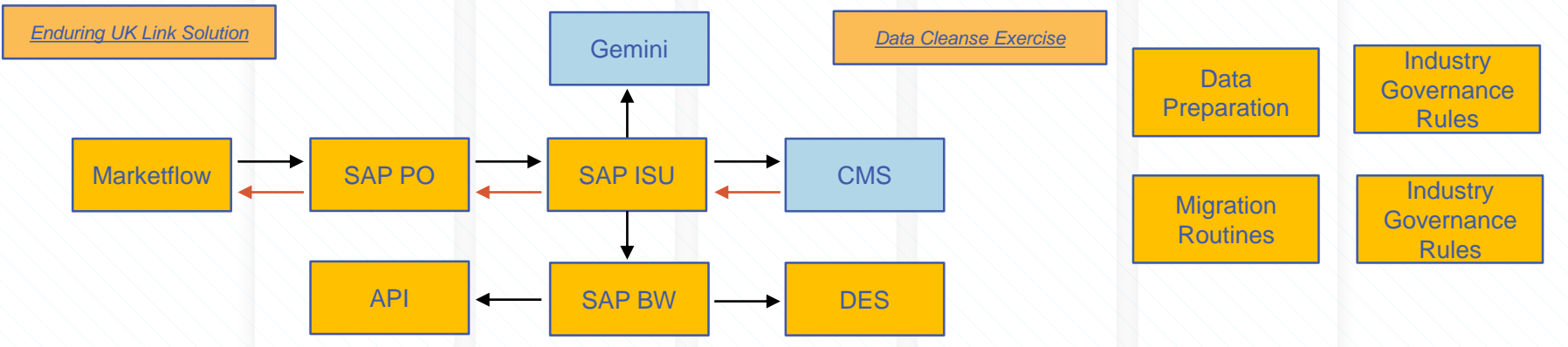
# Option – UK Link Data Cleanse and Enduring Retro Solution – Mod0651

## Overview

The below diagram gives a view of the interfaces and systems that are likely to be impacted as a result of performing a Data Cleanse exercise that facilitates correcting data retrospectively, in addition to creating an enduring Retrospective Update UK Link Solution.

Significant testing, regression and performance testing would be expected, in addition to a dedicated workstream to oversee the data preparation and migration activity. Any UK Link based solution is likely to cost in excess of the remaining Retrospective Data Update budget, and would represent a standalone UK Link Major Release in it's own right – with a development and delivery cycle of at least 18 - 24 months.

## Impacted Systems



| Overall Impact | Release Type       | T-Shirt Size | High Level Cost Estimate |
|----------------|--------------------|--------------|--------------------------|
| High           | Major - Standalone | XXL          | > £TBC                   |

# Alternative Option : Product Development

- Can be brought to the market at pace through Agile change development
- Offers business integration opportunities with customers via;
  - APIs – Alert functionality
  - File construction support
  - Connected to visualisation tool
- Allows market performance to be visualised and driven forward
- Enables a consolidated view of asset data the market is lacking
- Will help alert Xoserve to data issues with customers before they cause an impact

