



## **EUC09 Sites not in Class 1**

PAC Update August 2020

# Recap

- UIG Task Force identified sites with AQs over the Class 1 threshold that are still in Class 3 or 4 (Issue 3.2.1)
- Obligations in UNC G1.6.15 – updated by UNC Mod 0690 – **RAG status reflects the new rules**
- These sites should now be re-confirmed as Class 1 by the Shipper after **3 consecutive AQ calculations above the threshold, or after 12 months if every calculated AQ is above the threshold**
- These sites could be contributing to daily UIG if their usage pattern is very different to the EUC09B NDM profile
- Raised at UNC UIG Workgroup in January 2019 – recommended engagement by Xoserve and monitoring at PAC – last update provided at March 2020 PAC

# Overview of Statistics – Changes since June

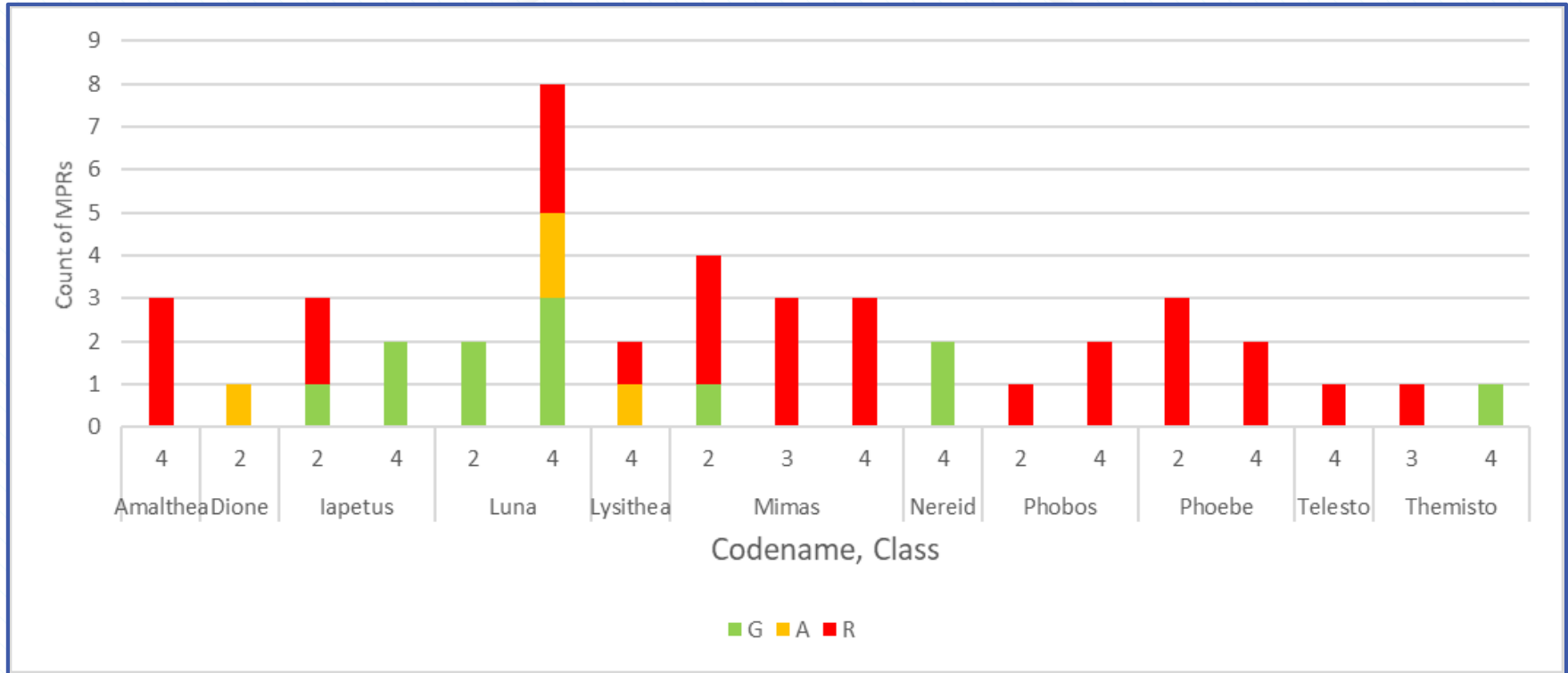
- As PARR Reports have not yet been developed, these stats have used the anonymised “Moon” codes
- Stats include Class 2, 3 and 4 sites **as at 1 August** – should be converted to Class 1 once qualifying criteria are met
- 16 Class 3 and 4 sites, total AQ 1.1 tWh (**increase of 3 sites**)
- 11 Class 2 sites, total AQ 1.3 tWh (**increase of 1 site**)
- Plus 5 sites which are over threshold and close to qualifying criteria (total 0.4 tWh), 12 sites over threshold, not close to qualifying (total 0.9 tWh)

# Summary of Count and Rolling AQ

|                   | 1 July |          | 1 August |          |
|-------------------|--------|----------|----------|----------|
|                   | Count  | Total AQ | Count    | Total AQ |
| Class 2 - RED     | 10     | 1.2 tWh  | 11       | 1.3 tWh  |
| Class 3 & 4 - RED | 13     | 0.9 tWh  | 16       | 1.1 tWh  |
| Total - RED       | 23     | 2.1 tWh  | 27       | 2.4 tWh  |
| Amber sites       | 4      | 0.3 tWh  | 5        | 0.4 tWh  |

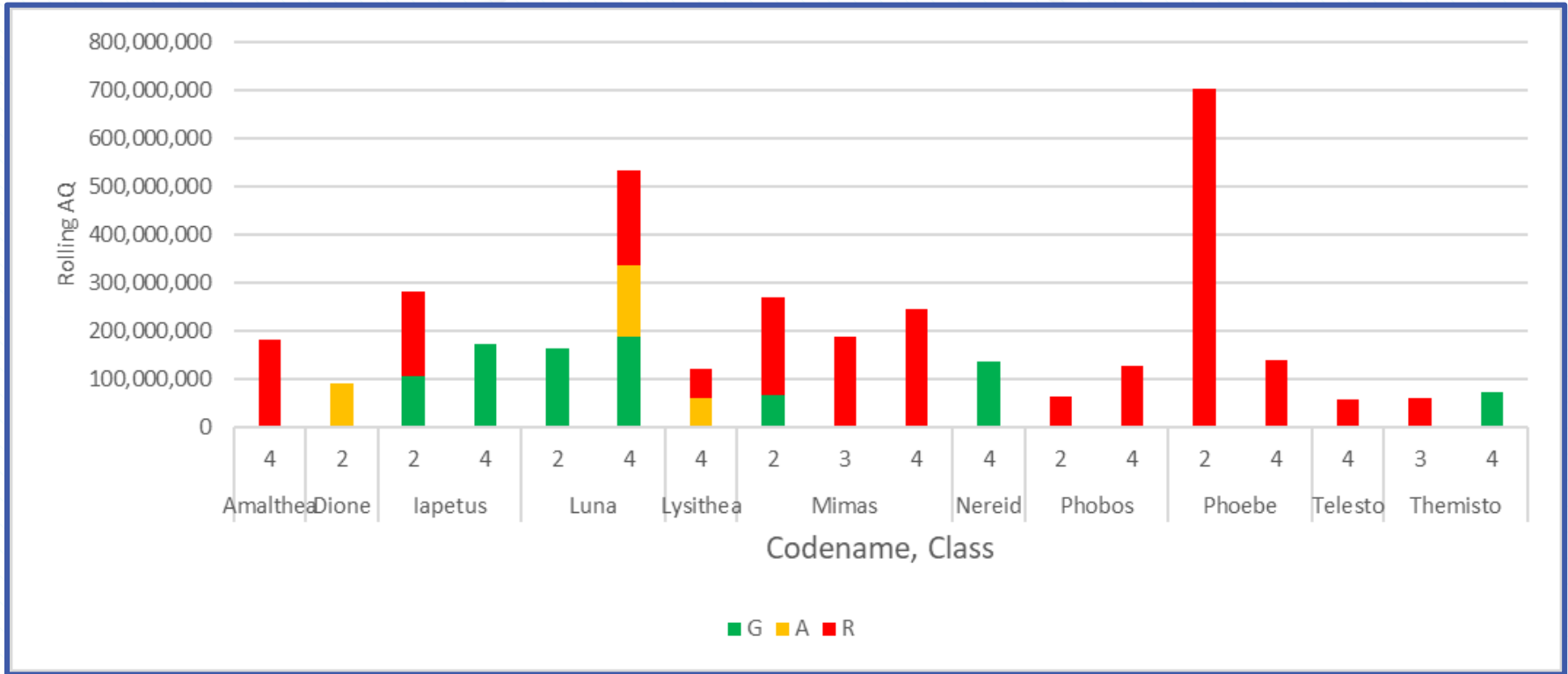
R = G1.6.15 criteria met, A = Close to qualifying period met, G = newly increased to EUC09  
Stats reflect the revised UNC rules

# EUC09 Sites as at 1 August 2020 – COUNT, by Class



R = G1.6.15 criteria met, A = Close to qualifying period met, G = newly increased to EUC09

# EUC09 Sites as at 1 August 2020 – AQ, by Class



R = G1.6.15 criteria met, A = Close to qualifying period met, G = newly increased to EUC09

# Observations

- Now nine Shippers with Red sites this month (eight in July)
- 12 of the Red sites had a meter reading loaded in July – good news for reconciliation and AQ accuracy – but 7 had not had an AQ calc in the last three months
- Of the 27 Red sites this month, 22 were present in the last update, 5 are new

The logo for xserve is centered within a stylized house outline. The house has a white background with a light blue diagonal line pattern. The roof is a simple triangle, and the main body is a rectangle divided into four vertical panes by thin grey lines. The logo itself consists of the word "xserve" in a blue, sans-serif font. The "x" is a dark blue, while the "serve" is a lighter blue. The "x" is composed of two overlapping chevron shapes pointing towards each other.

xserve