

PARR Dashboards

12th May 2020

PAFA



2A.1 Estimated & Check Reads - Product Classes 1 & 2

Report measures the percentage of each shippers portfolio where estimated reads were provided. Count of each shippers portfolio where check reads were not provided

PC1

Industry movement:

- ↑ 0.47% - Monthly change
- ↑ 0.21% - Annual change

Monthly changes:

- ↑ 6.61% Papeete
- ↑ 12.70% Washington
- ↑ 29.60% Monaco
- ↓ 7.14% Nassau
- ↓ 11.06% Ankara
- ↓ 25.00% Valletta

PC2

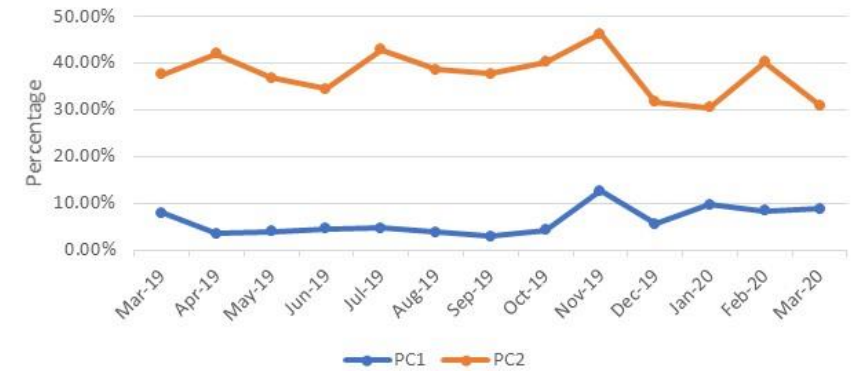
Industry movement:

- ↓ 9.21% Monthly change
- ↓ 6.62% Annual change

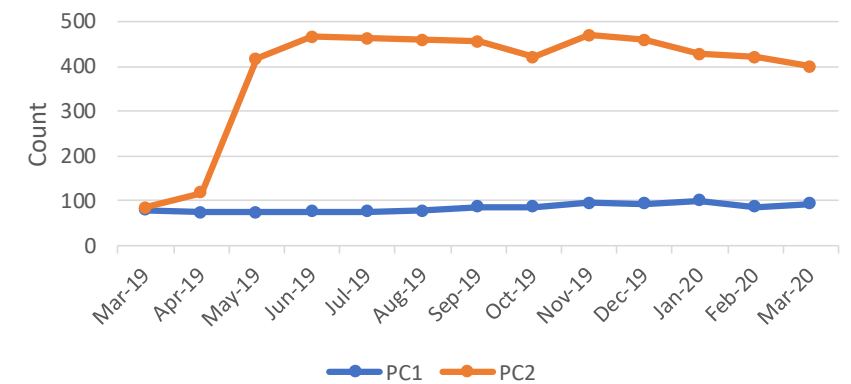
Monthly changes:

- ↑ 1.24% Saipan
- ↑ 9.09% Philipsburg
- ↑ 15.16% Thimphu
- ↓ 10.71% Tehran
- ↓ 12.70% Tiraspol
- ↓ 20.93% Reykjavik

2A.1 Percentage of Estimated Reads for PC1 & PC2



2A.1 Count of Check Reads not completed for PC1 and PC2



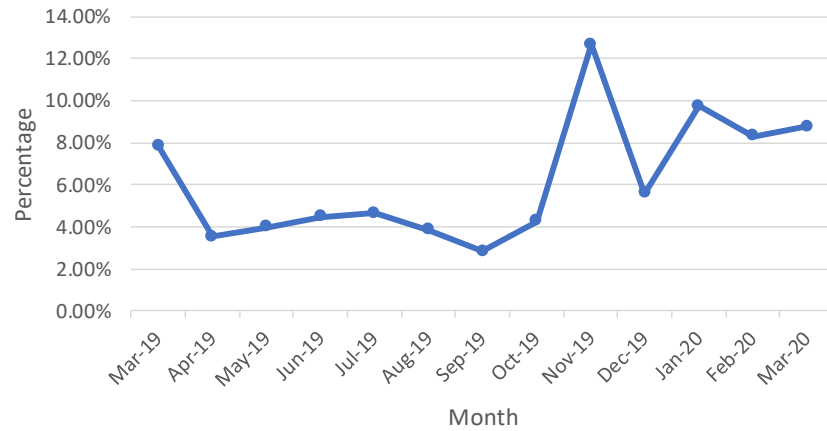
Observations:

- PC2 Estimated Read Performance has returned to the level at which it was performing in January 2020.
 - This has been driven by individual Shipper work
- The number of check reads for PC2 has significantly increased since May 2019 – working with CAMs to resolve issues with Shippers

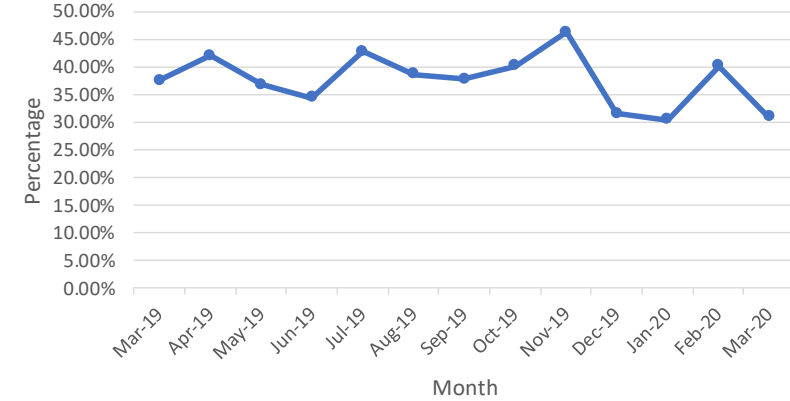
2A.1 Estimated & Check Reads - Product Classes 1 & 2



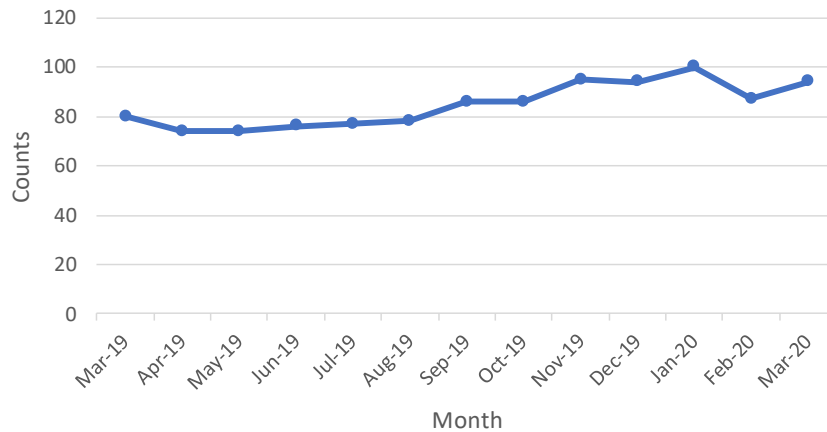
2A.1 PC1 Estimated Read Totals



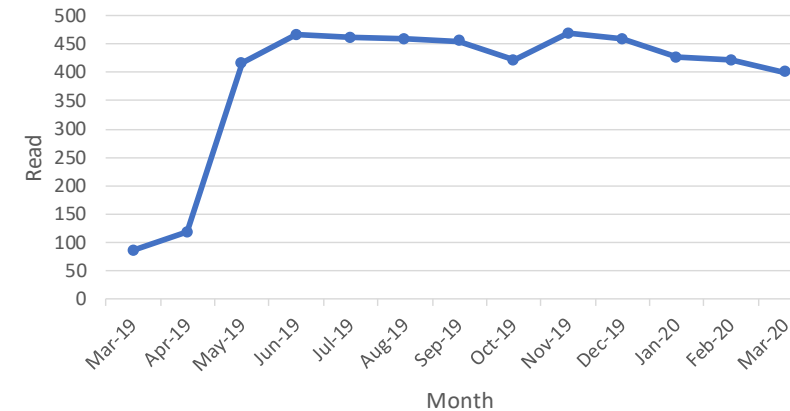
2A.1 PC2 Estimated Read Totals



2A.1 PC1 Check Reads Total



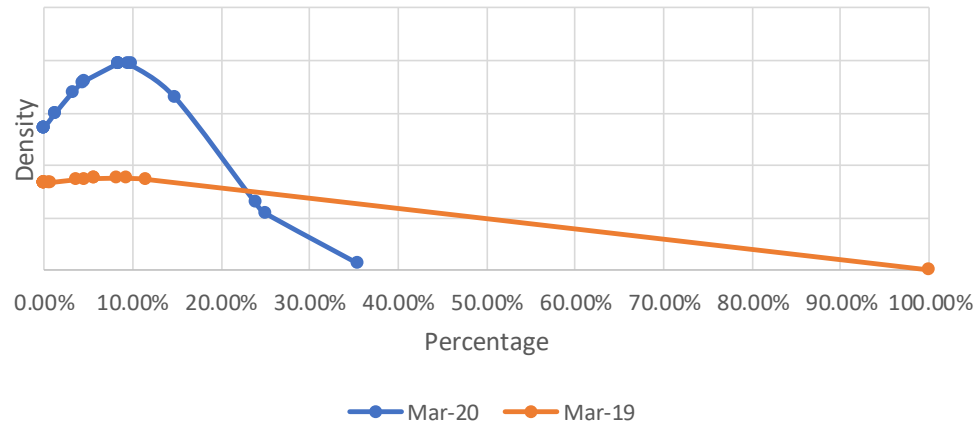
2A.1 PC2 Check Read Totals



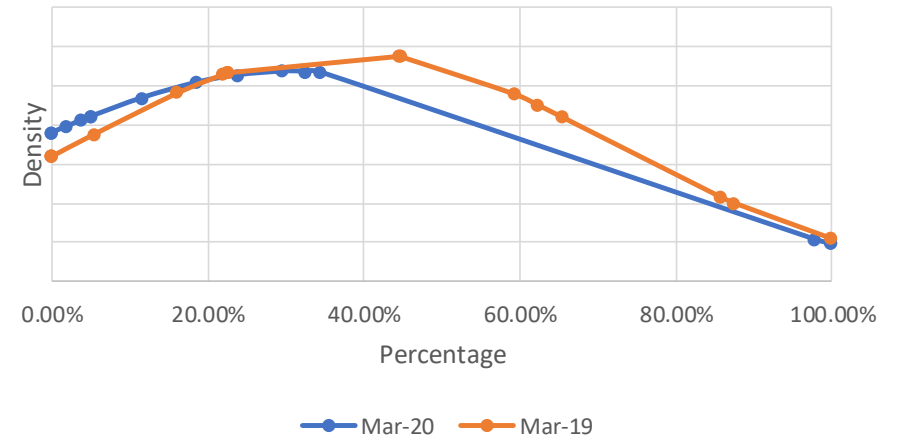
2A.1 Estimated & Check Reads - Product Classes 1 & 2



2A.1- 12 Month comparison (Average of PC1 Estimated Reads)



2A.1- 12 month comparison (Average of PC2 Estimated Reads)



2A.2 – No Meter Recorded



Report measures the percentage of each shippers portfolio where no meter recorded in the supply point register

PC1

Highest shippers:
Valletta 25%

PC2

0% for product class

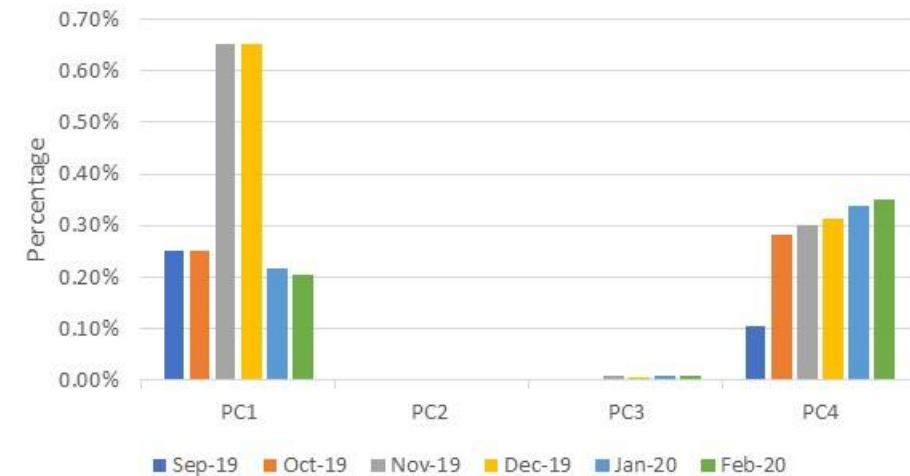
PC3

Highest shippers:
Roseau 0.14%
Praia 0.61%

PC4

Highest shippers:
Oranjestad 2.22%
Pyongyang 2.67%
Marigot 9.09%

2A.2 Percentage of No Meter recorded by Product Class



Observations:

- Increase in the number of no meters recorded on the supply point register has increased significantly within PC4 since September 2019.
- The increase in PC1 is primarily due to changes in the total number of supply points in the product class and not driven by the change in total number of no meters recorded

2A.3 No Meter Recorded and data flows received



Report measures the percentage of each shippers portfolio where no meter recorded in the supply point register and data flows received

PC1 & PC2
0.0% for both product classes

PC3

PC4

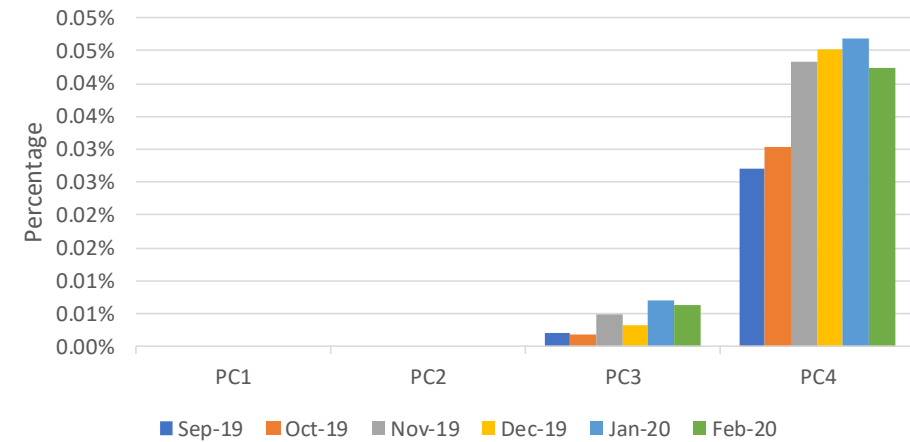
Highest shippers:

Roseau 0.14%
Praia 0.17%

Highest shippers:

Oranjestad 0.22%
Saipan 0.56%
Roseau 0.76%

2A.3 No Meter recorded by Product Class and data flows received



2A.4- Shipper Transfer Read Performance

Report measures the percentage of Shipper portfolio of opening meters reads provided following confirmation

Industry movement:

↑ 8.62% Monthly change
 ↑ 1.36% Annual change

Monthly changes:

↑ 25.51% Luxembourg	↓ 6.12% Reykjavik
↑ 26.44% Apia	↓ 6.67% Bratislava
↑ 35.71% Luanda	↓ 10.95% Rome

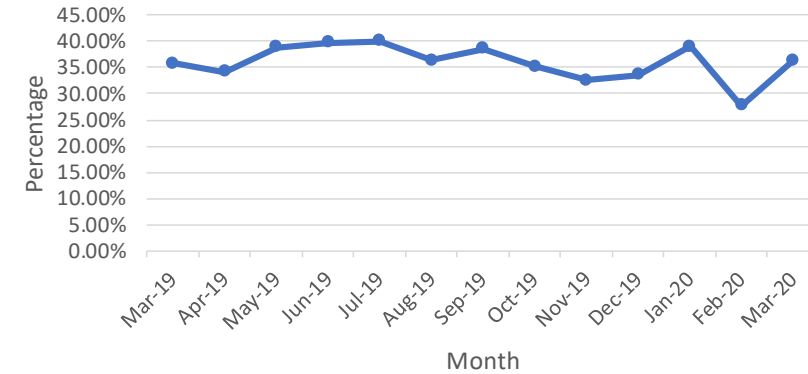
Observations:

- Transfer read performance remains low and is significantly below the UNC obligation
- Average transfer read performance over the last 12 months is 33.86%

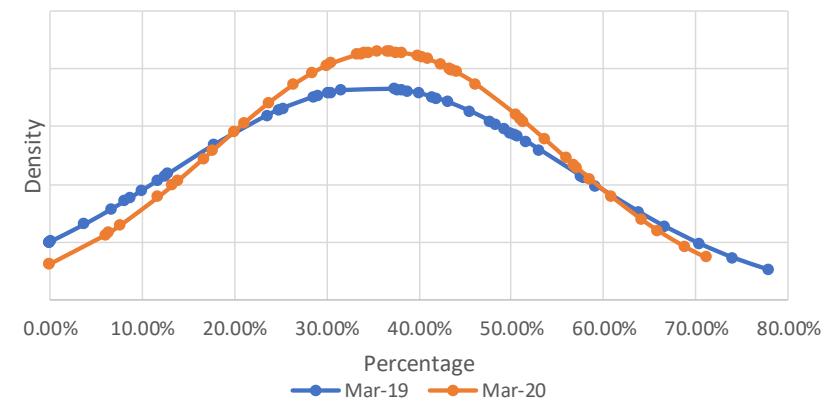
Recommendations:

- Industry education on obligation to provide opening meter readings following confirmation.
- Industry engagement on the difficulties providing opening meter reading following confirmation.

2A.4 Percentage of opening meter reads provided by industry total



2A.4- 12 Month Comparison of Shipper Transfer Read Performance

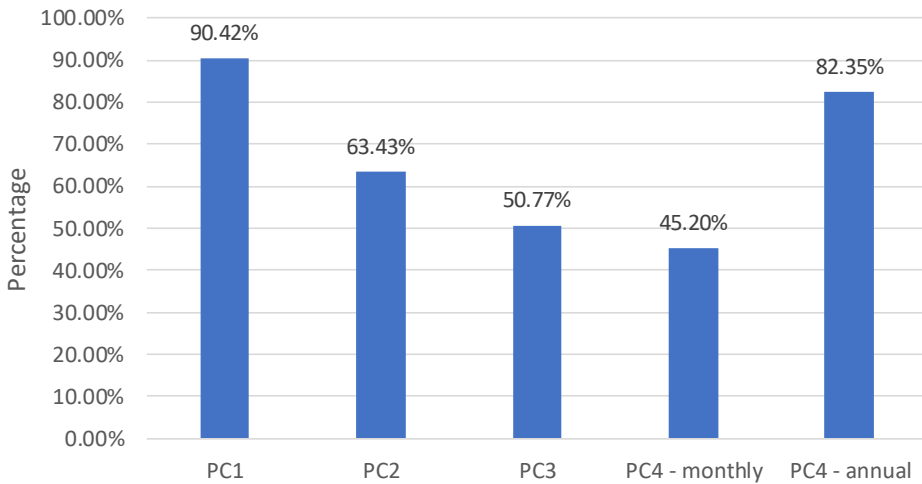


2A.5- Read Performance

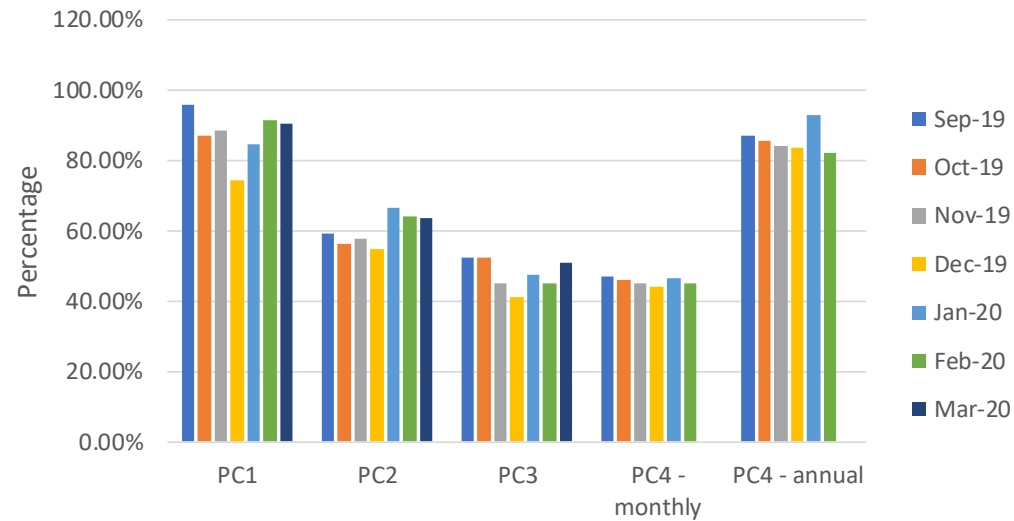
Report measures the percentage of Shipper portfolio submitting reads in March 2020.

PC4 Monthly and Annually read measures the percentage of Shipper portfolio submitting reads in February 2020.

2A.5 Percentage of Product Class read submissions



2A.5 Percentage of Product Class read submissions



PC1

- 50.00% Valletta
- 81.92% Reykjavik
- 85.71% Ankara

PC2

- 0% Praia
- 0% Berlin
- 17.21% Thimphu

PC3

- 0% Djibouti
- 0% Luxembourg
- 0% Riyadh
- 0% Wellington

PC4 (Monthly)

- 0% Baghdad
- 0% Bern
- 0% Luxembourg
- 0% Castries
- 0% Pyongyang
- 0% Maputo

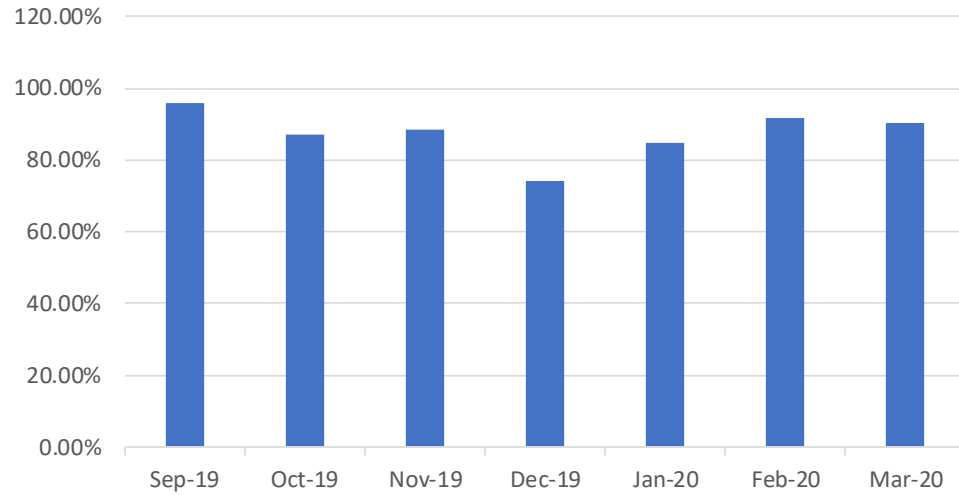
PC4 (Annual)

- 0% Bamako
- 0% Pyongyang
- 1.63% Bratislava

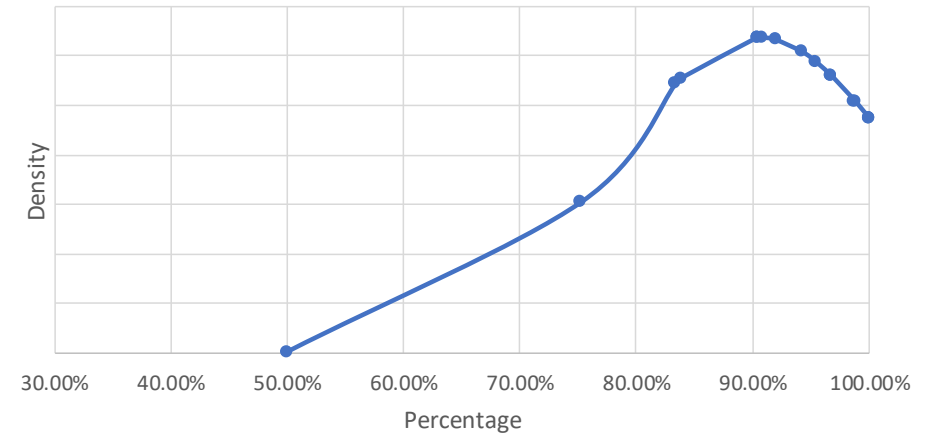
2A.5- Read Performance (PC1)



Read Performance - PC1



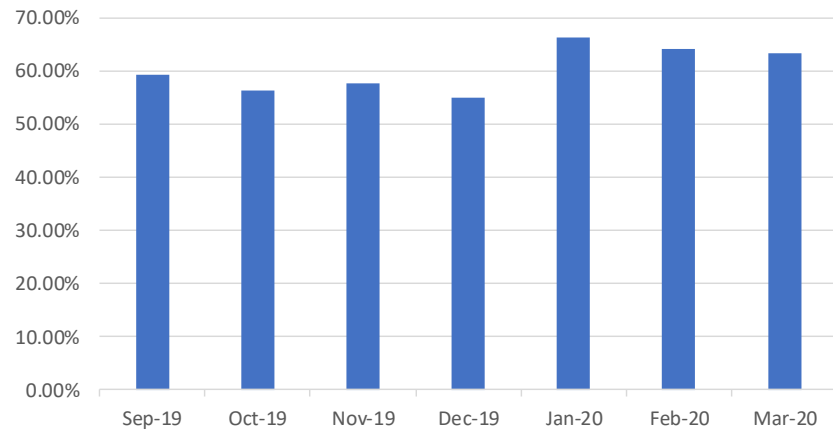
2A.5 Distribution of percentage of PC1 sites providing meter reads



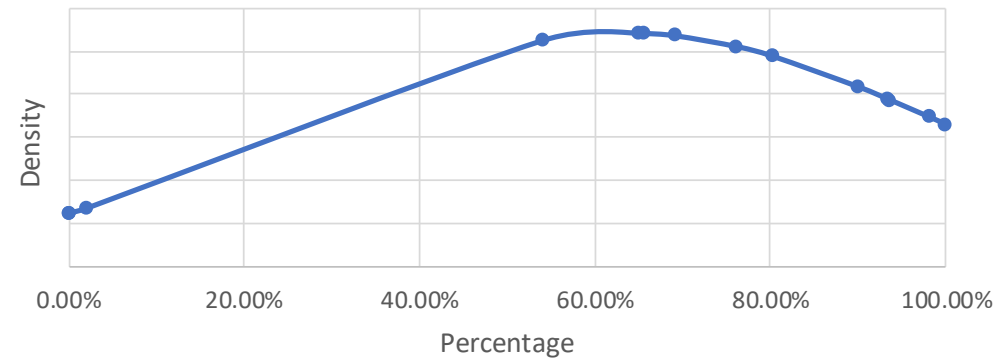
2A.5- Read Performance (PC2)



Read Performance - PC2



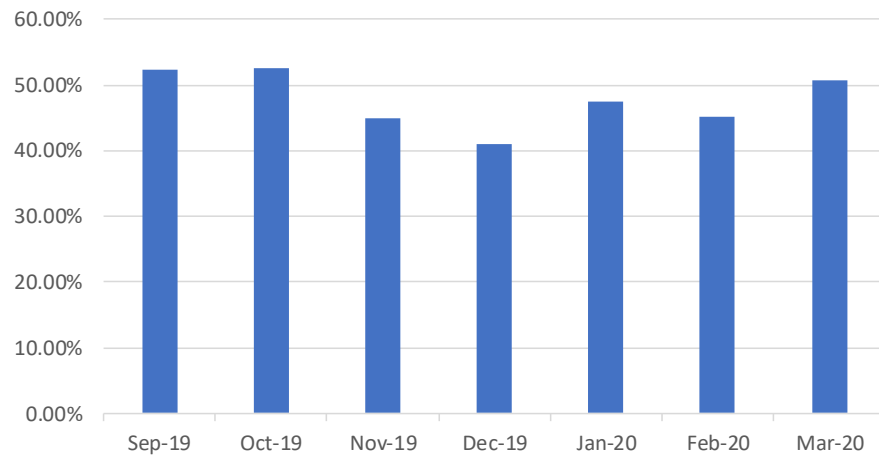
2A.5 Distribution of percentage of PC2 sites providing meter reads



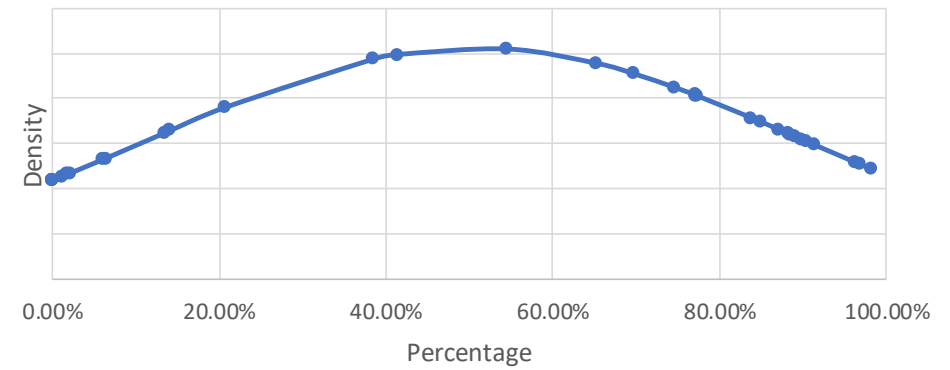
2A.5- Read Performance (PC3)



Read Performance - PC3



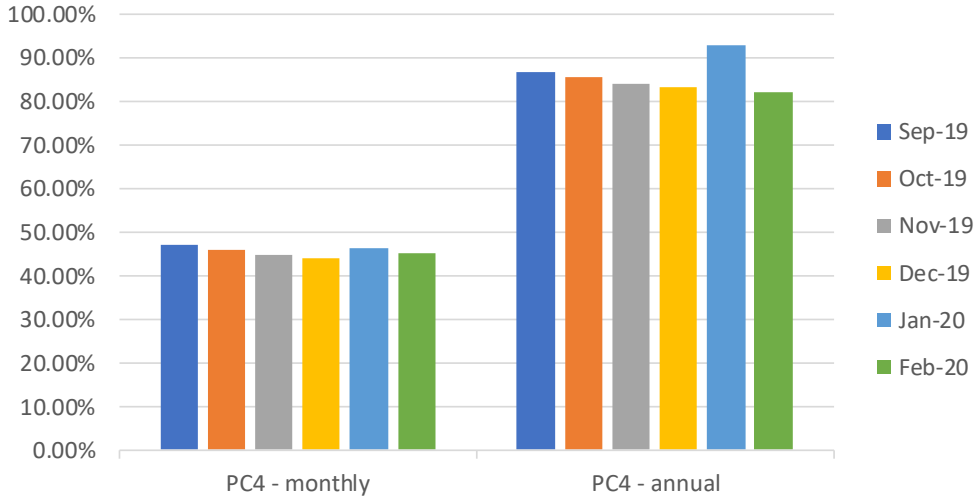
2A.5 Distribution of percentage of PC3 sites providing meter reads



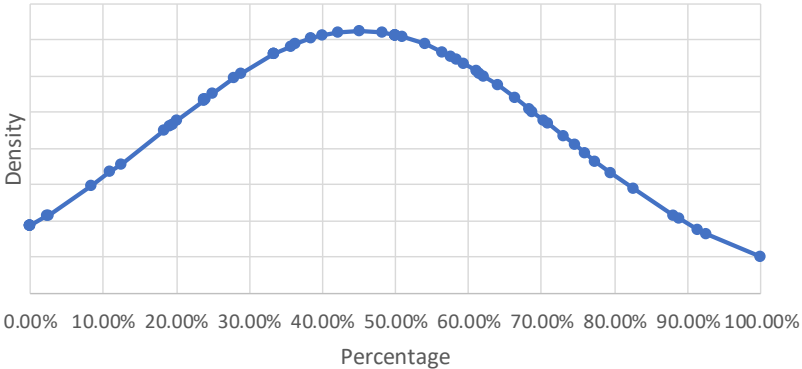
2A.5- Read Performance (PC4)



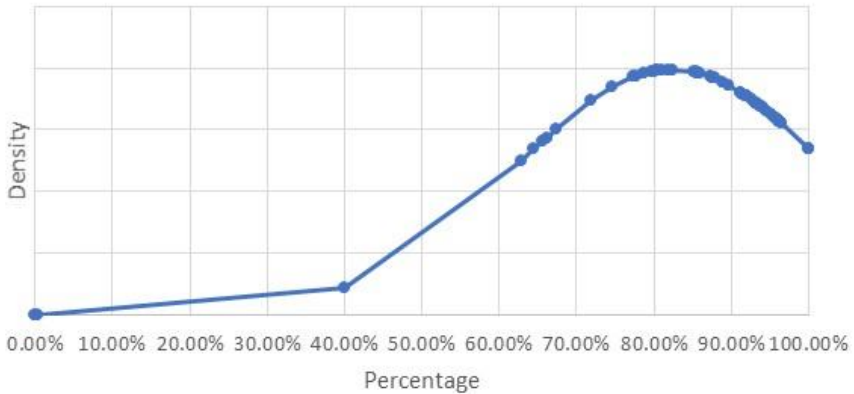
Read Performance - PC4



2A.5 Distribution of percentage of PC4 Monthly sites providing meter reads



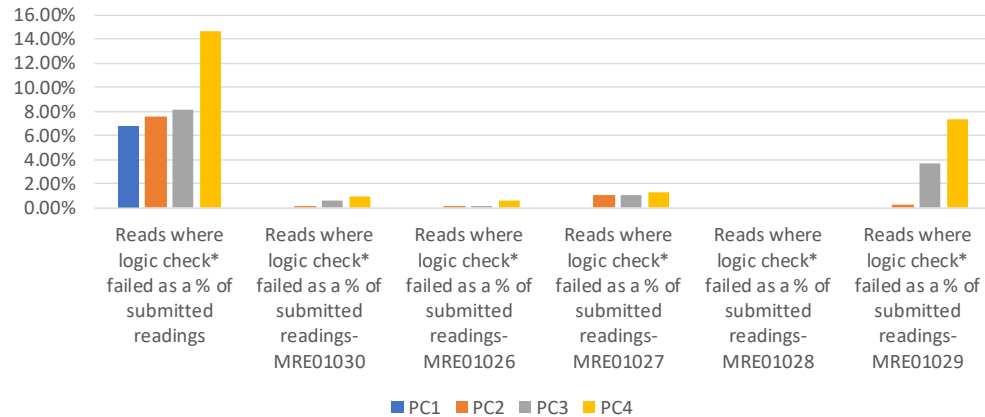
2A.5 Distribution of percentage of PC4 Annual sites providing meter reads



2A.6 Meter Read Validity Monitoring

Report measures the percentage of Shipper portfolio where reads submitted failed validation.

2A.6 Percentage of meter read validity by Product Class - March 2020

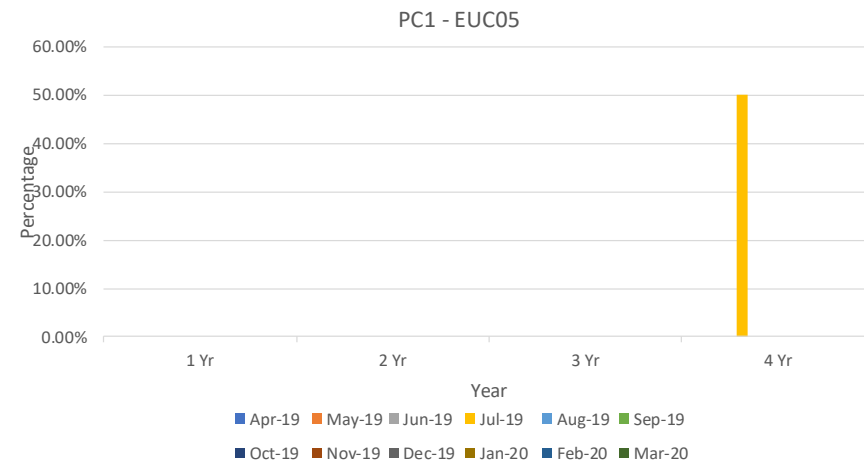
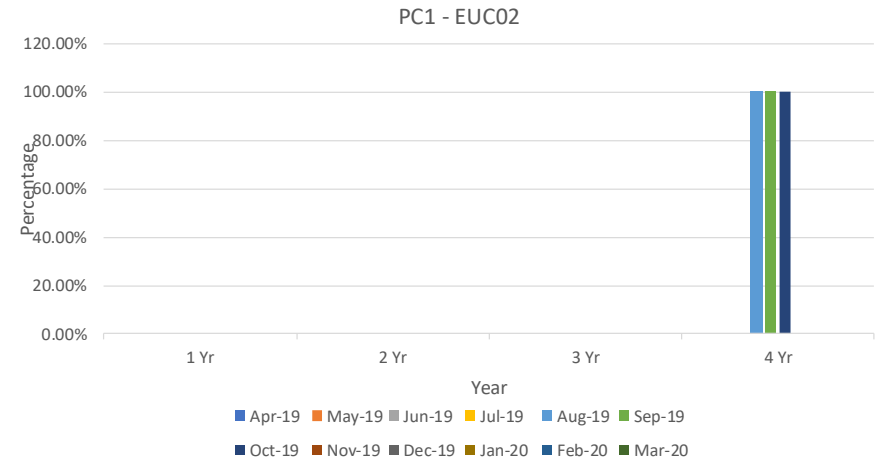
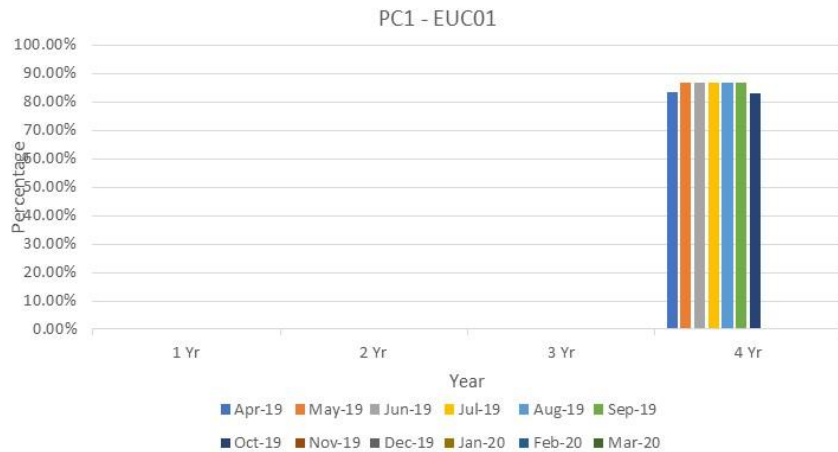


Product Class	Reads where logic check failed as a % of submitted readings	MRE01030	MRE01026	MRE01027	MRE01028	MRE01029
1	Valletta – 24.39%					
2	Papeete– 16.41%	Saipan – 0.93%	Papeete– 1.37%	Praia – 10.53%		Saipan– 1.63%
3	Monaco – 57.41%	Marigot – 7.14%	Gitega – 0.46%	Reykjavik– 14.36%		Marigot– 35.71%
4	Thimphu – 82.63%	Bern – 4.64%	Marigot – 4.00%	Kampala – 25.00%		Bissau– 76.92%

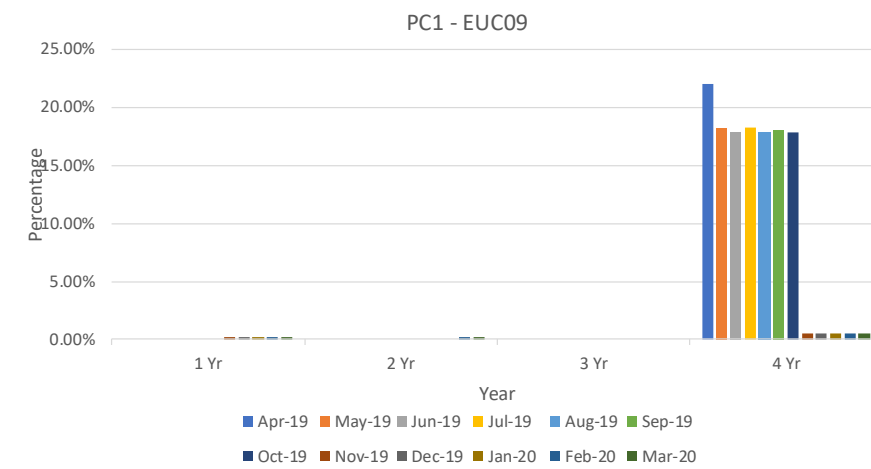
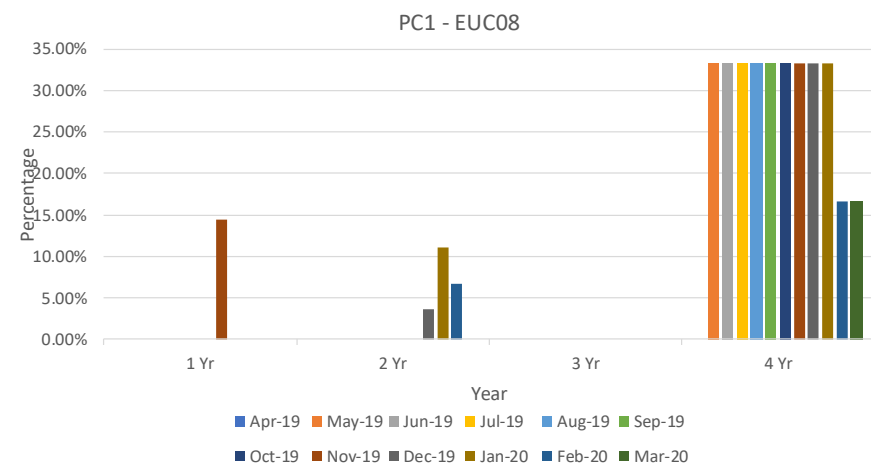
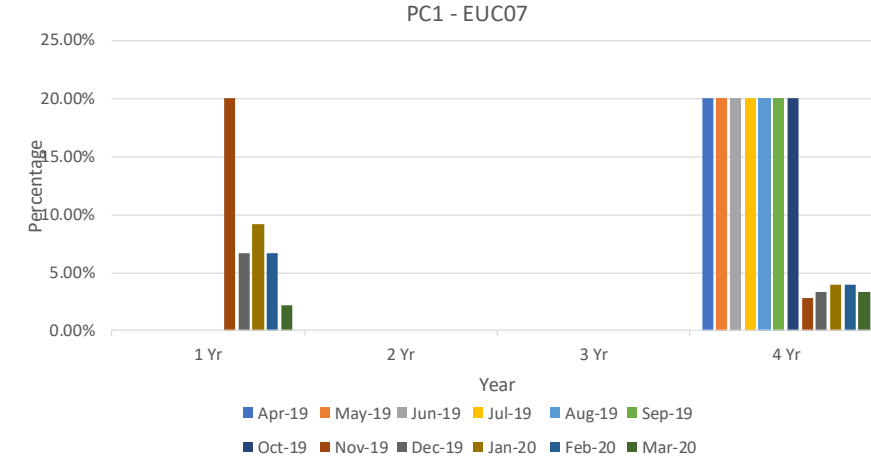
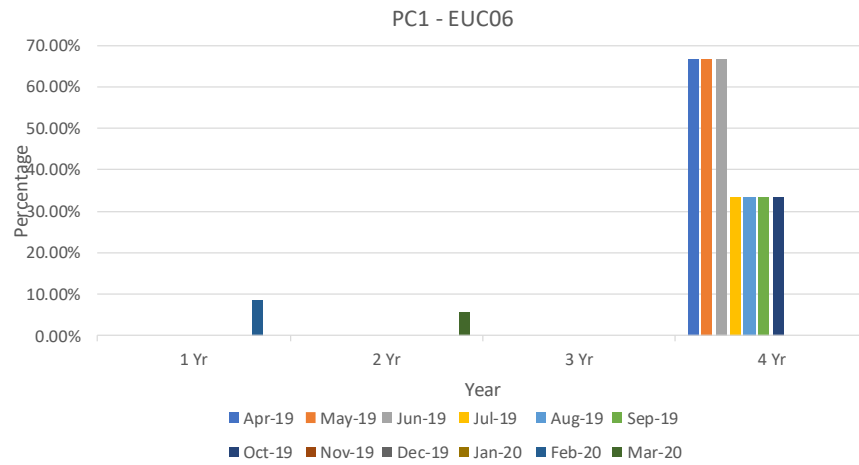
2A.7 No Reads Received for 1, 2, 3 or 4 years – Product Class 1



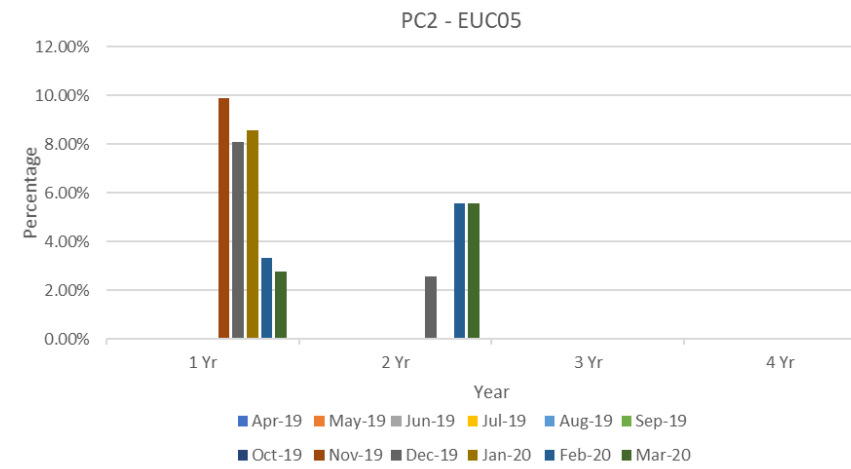
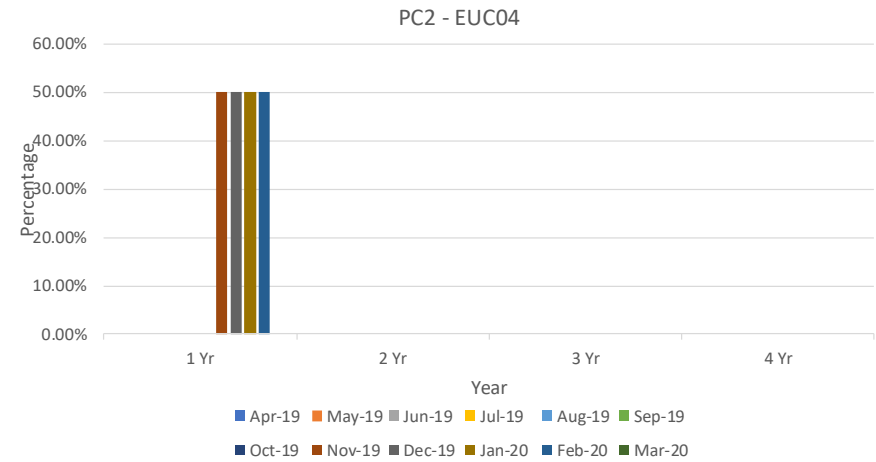
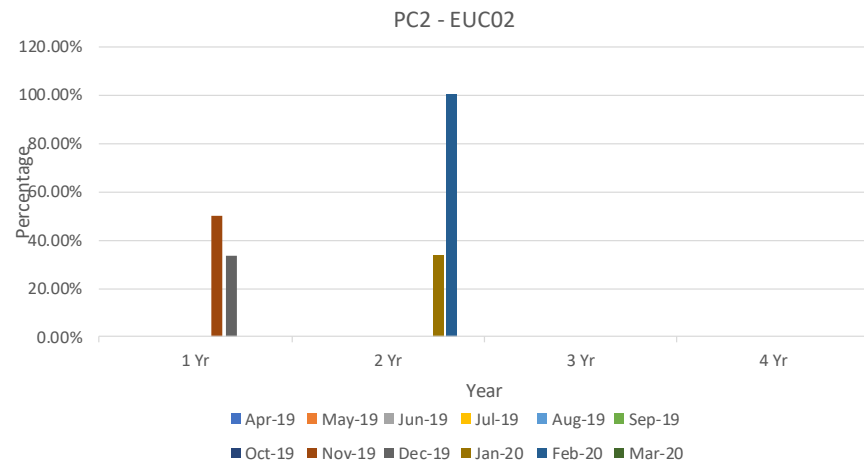
Report measures the percentage of Shipper portfolio in the specified AQ band without a meter reading for the specified period.



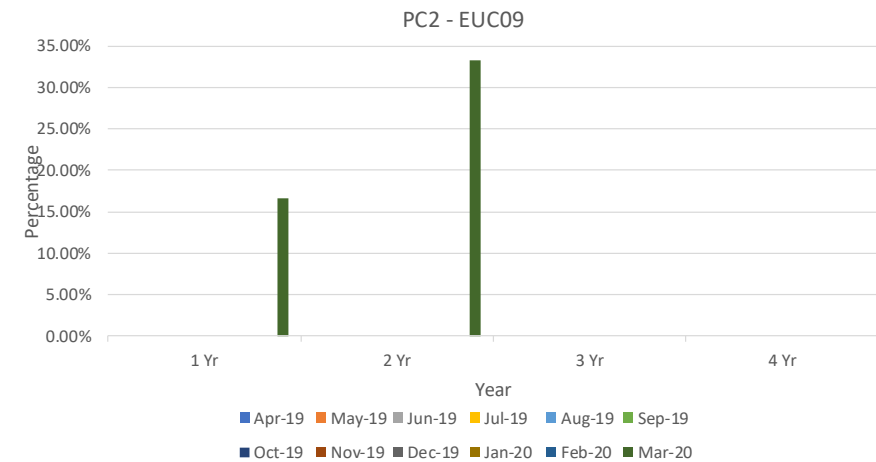
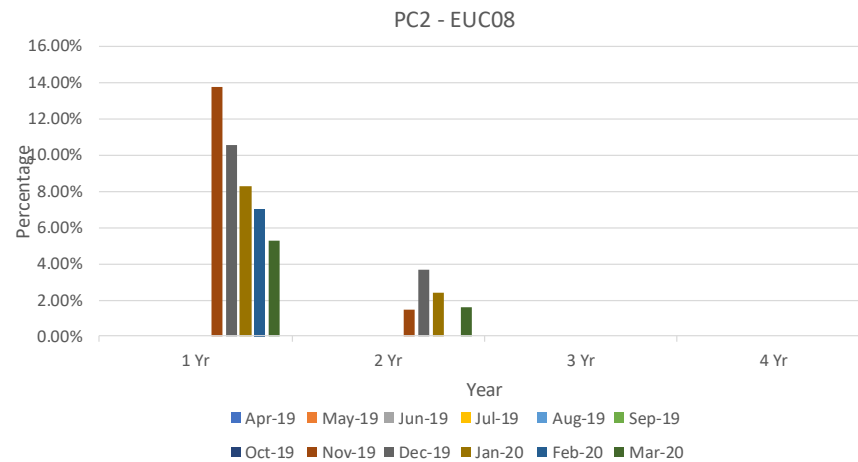
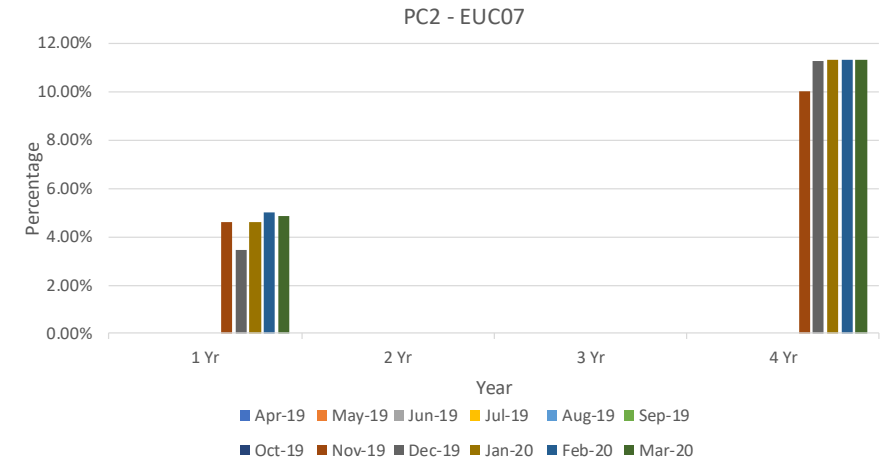
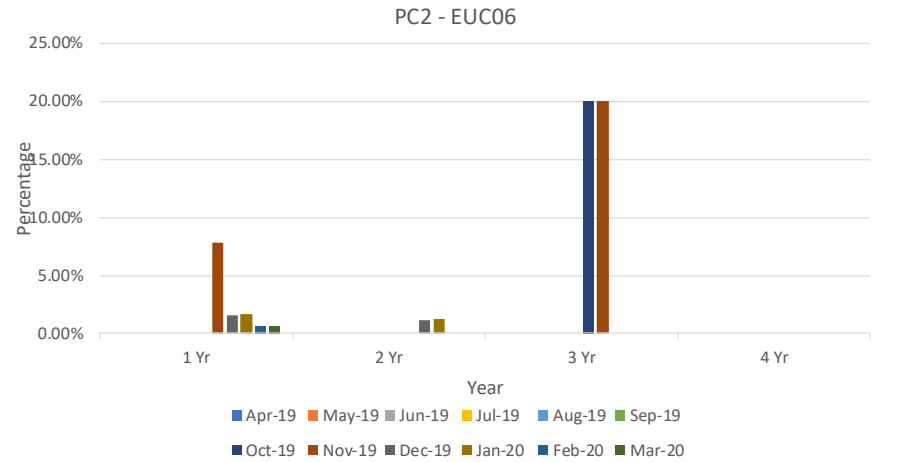
2A.7 No Reads Received for 1, 2, 3 or 4 years – Product Class 1



2A.7 No Reads Received for 1, 2, 3 or 4 years – Product Class 2



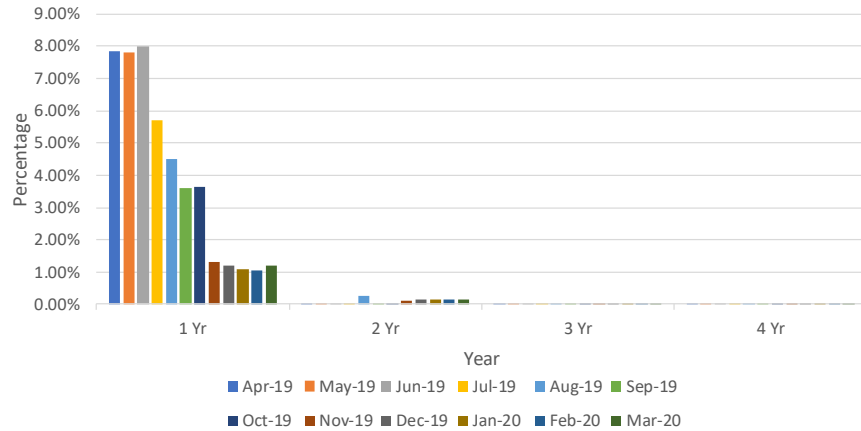
2A.7 No Reads Received for 1, 2, 3 or 4 years – Product Class 2



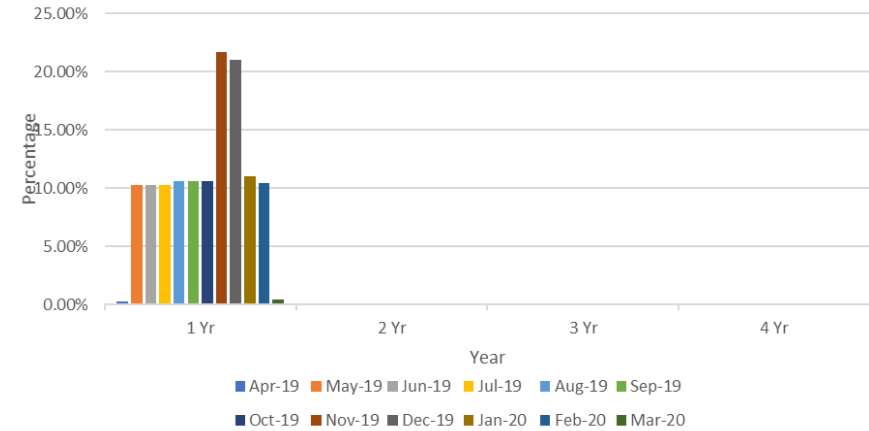
2A.7 No Reads Received for 1, 2, 3 or 4 years – Product Class 3



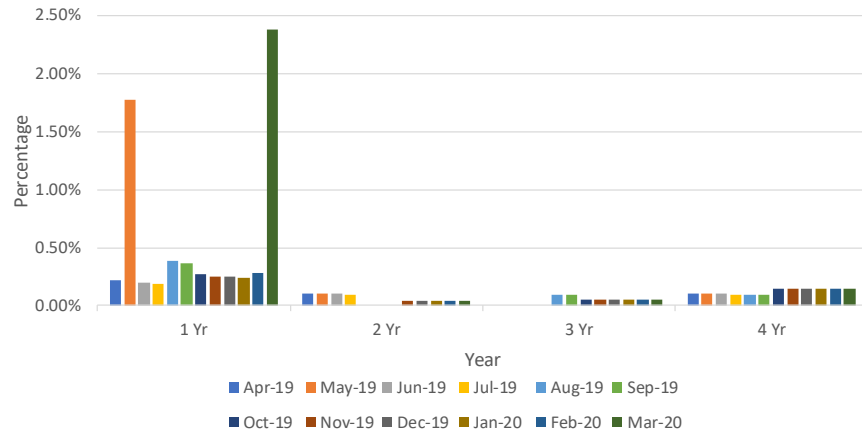
PC3 - EUC01



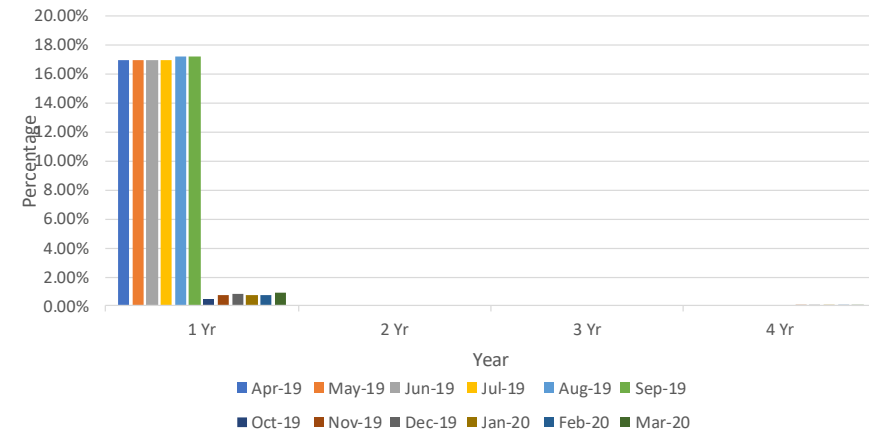
PC3 - EUC02



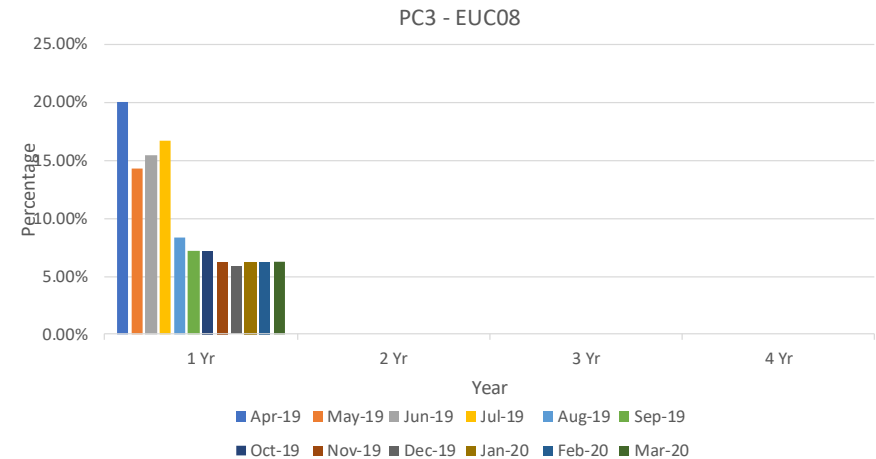
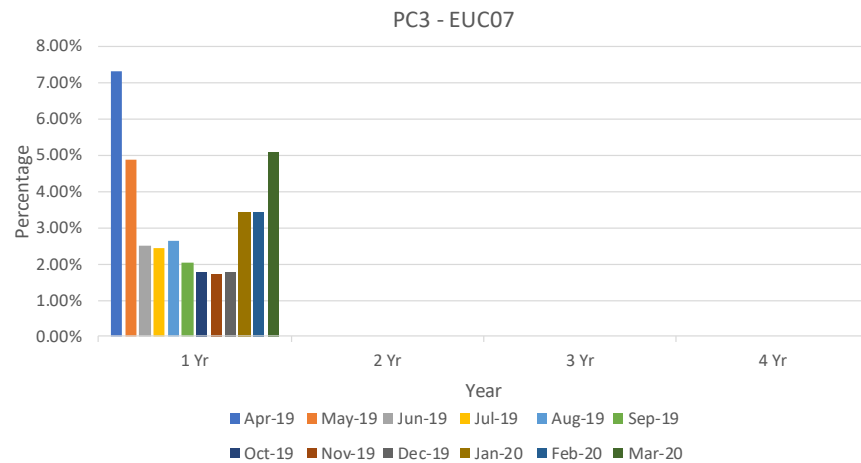
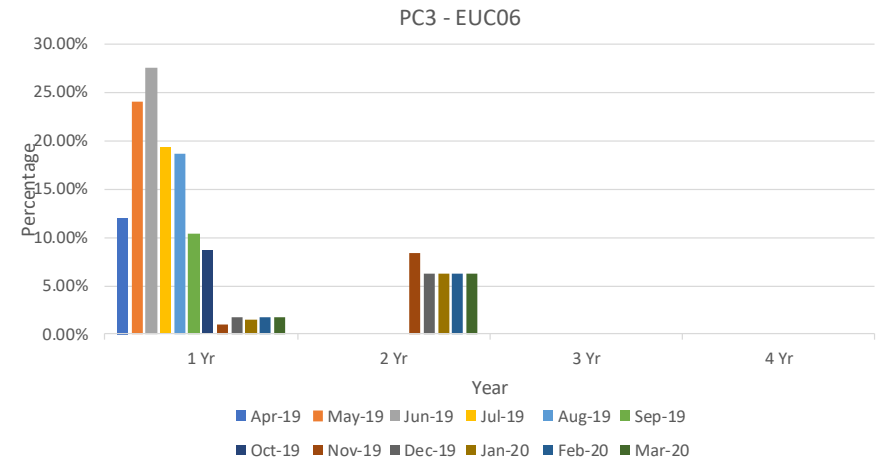
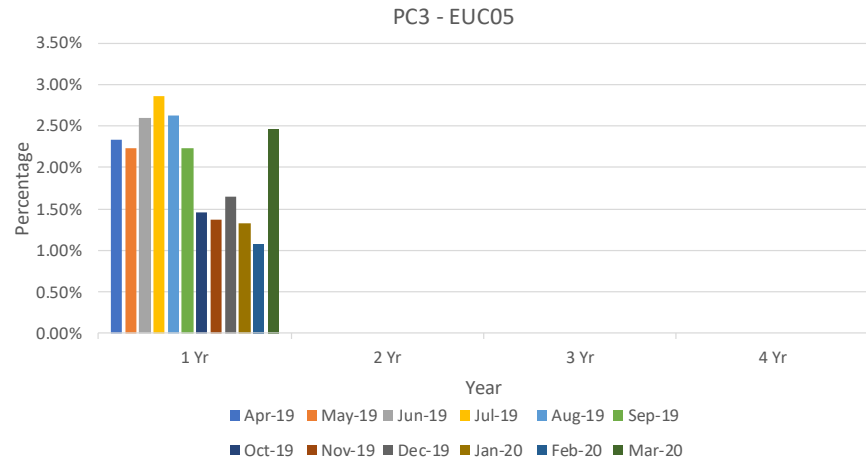
PC3 - EUC03



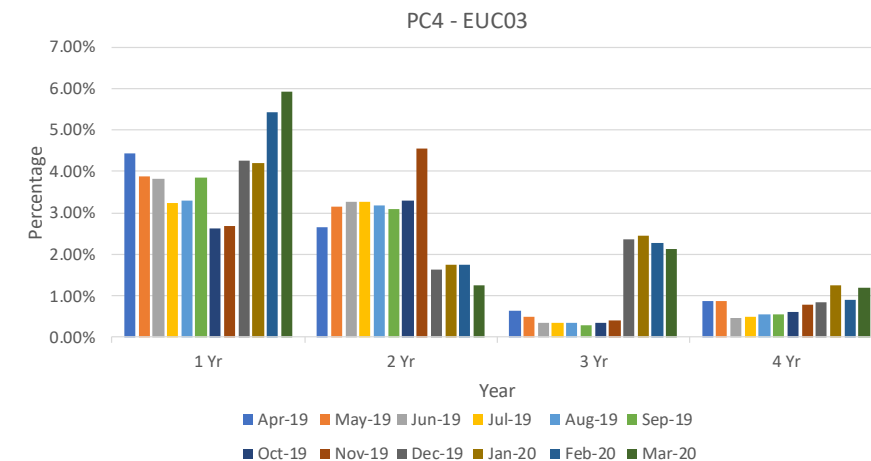
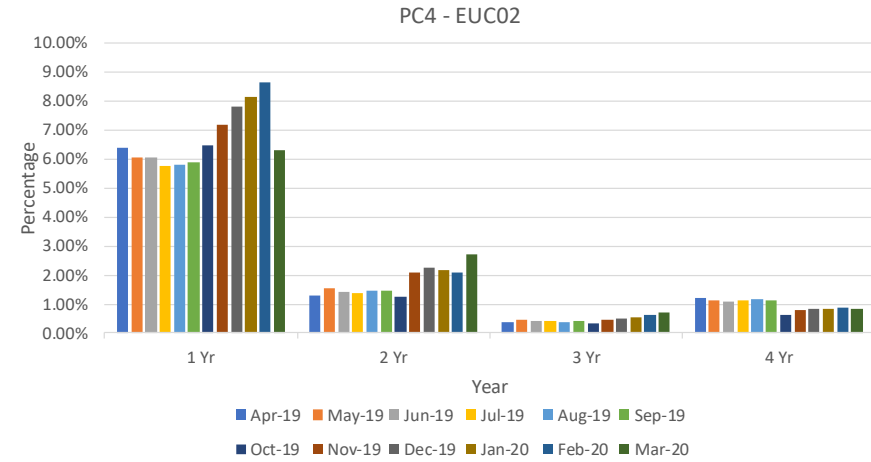
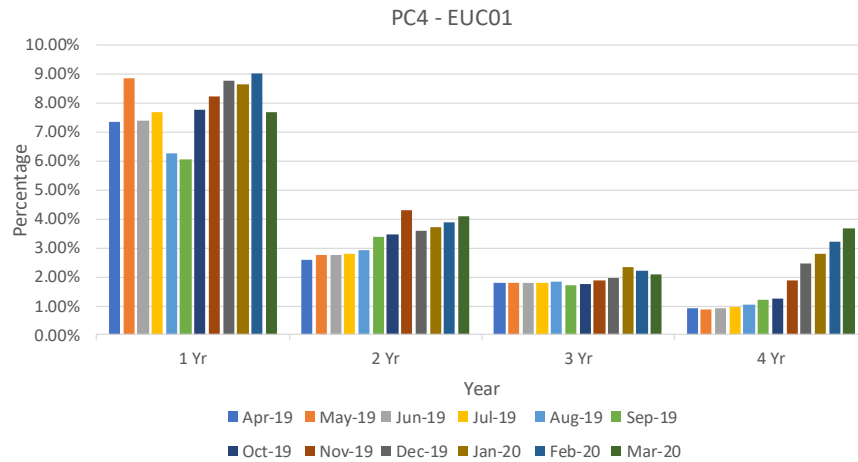
PC3 - EUC04



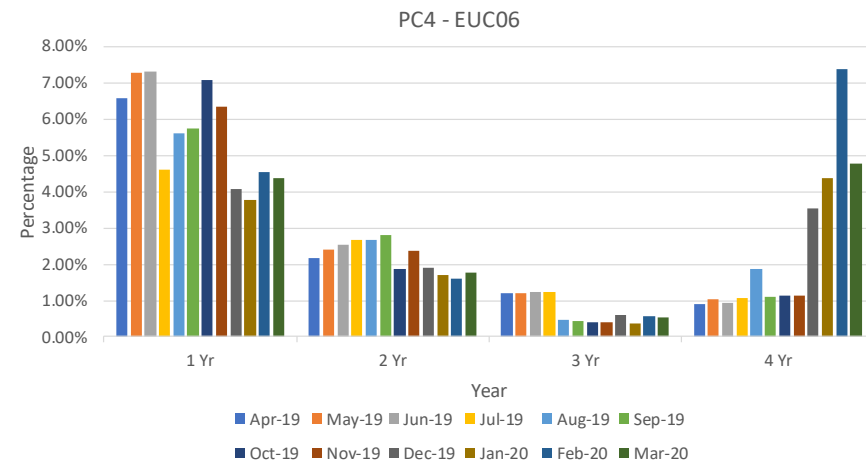
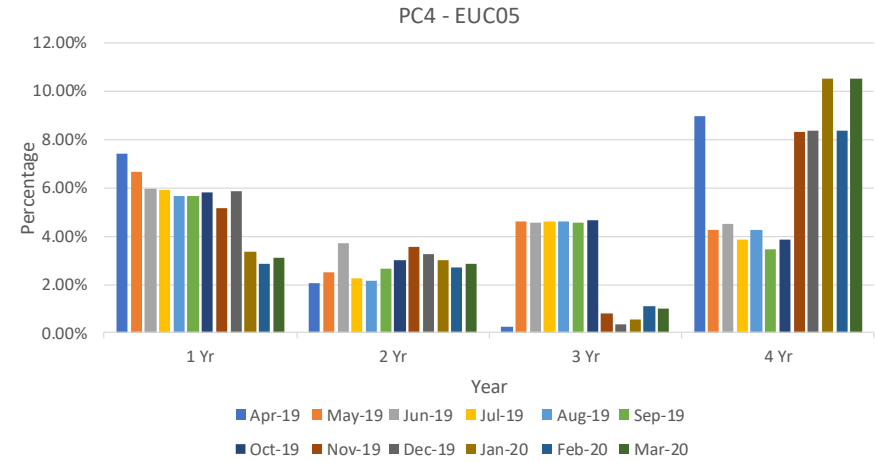
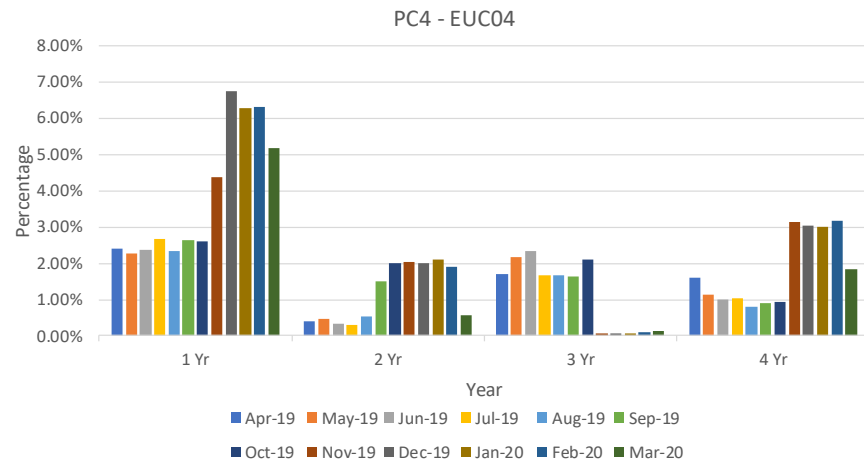
2A.7 No Reads Received for 1, 2, 3 or 4 years – Product Class 3



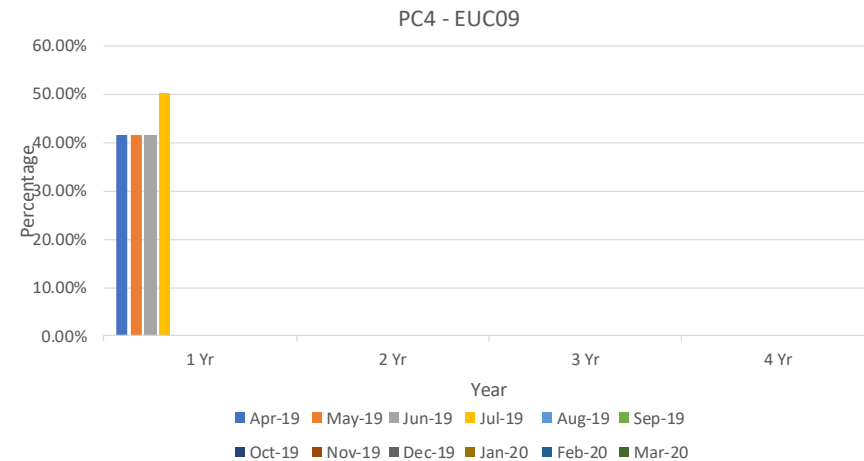
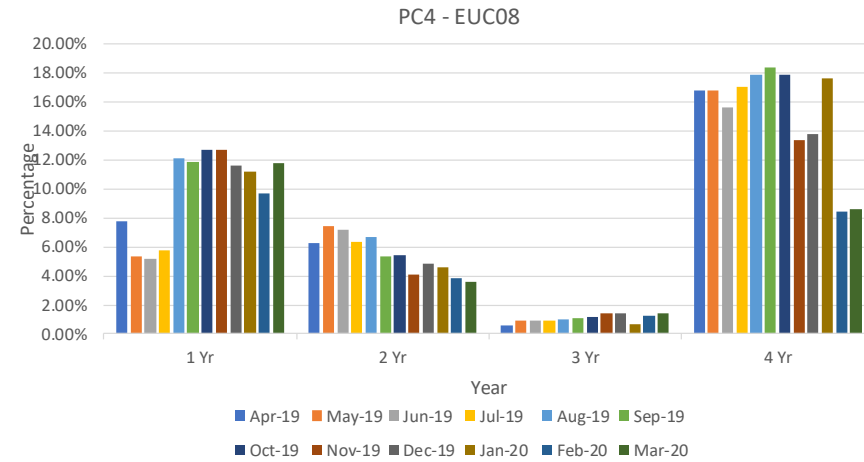
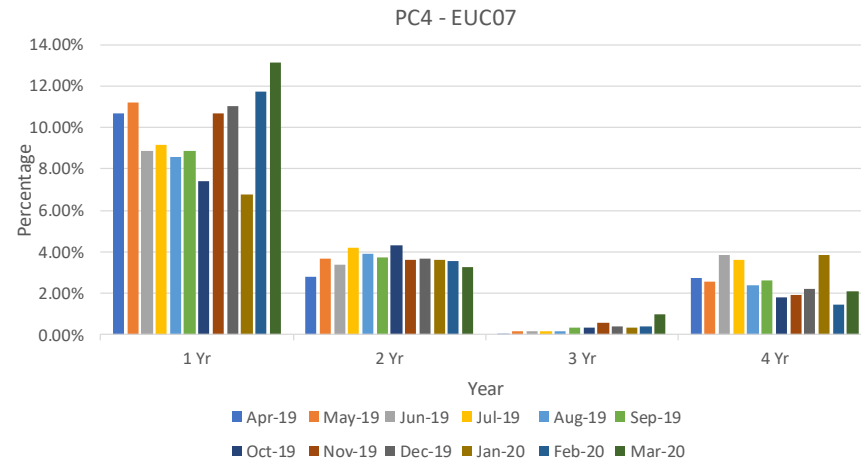
2A.7 No Reads Received for 1, 2, 3 or 4 years – Product Class 4



2A.7 No Reads Received for 1, 2, 3 or 4 years – Product Class 4



2A.7 No Reads Received for 1, 2, 3 or 4 years – Product Class 4



2A.8 AQ Correction by Reason Code

Report measures the count of Shipper Portfolio of MPRNs where AQ Correction process Used

Changes in total number of AQ corrections used

Reason Code 01- Confirmed Theft

↓ 1 Monthly Change
↓ 35 Annual Change

Reason Code 02- Change in Consumer Plant

↑ 913 Monthly Change
↓ 1376 Annual Change

Reason Code 03- Commencement of New Business

↓ 5 Monthly Change
↑ 26 Annual Change

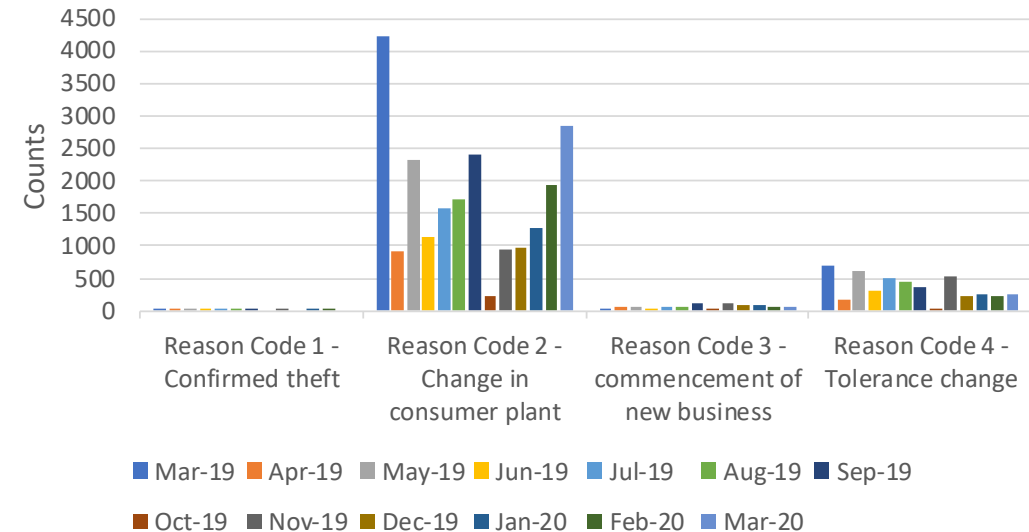
Reason Code 04- Tolerance Change

↑ 24 Monthly Change
↓ 444 Annual Change

Observations:

- Change in consumer plants continues to account for the highest proportion of AQ corrections.
- Change in consumer plant spiked in December 2019 due to performance from one Shipper (has been excluded from graph) – working with CAM on resolution

2A.8 Count of AQ Corrections used by reason code



2A.9 Standard CF AQ > 732,000 kWh

Report measures the count of sites with an AQ>732,000 kWh, but having a standard correct factor

EUC04

↑ 111 Monthly Change
↓ 786 Annual Change

EUC05

↓ 2 Monthly Change
↓ 108 Annual Change

EUC06

↑ 2 Monthly Change
↓ 20 Annual Change

EUC07

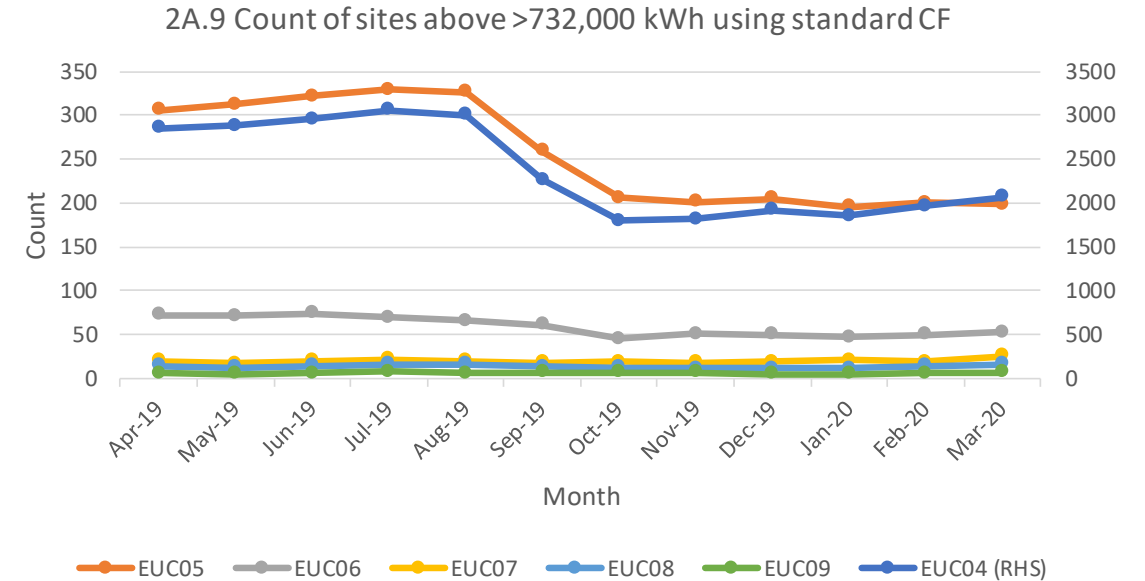
↑ 6 Monthly Change
↑ 5 Annual Change

EUC08

↑ 2 Monthly Change
↑ 2 Annual Change

EUC09

↑ 1 Monthly Change
↑ 1 Annual Change



Observations:

- EUC04 continues to have a significantly higher number of standard correction factors used compared to other EUC bands.
- The use of standard correction factors has decreased significantly since October 2018, though improvement had plateaued in recent months. The PAFA are working with CAMs in this area.

2A.10 Replaced Meter Reads

Report measures the count of meter reading replacements which results in reconciliation adjustments.

EUC01

- ↑ 40010 Monthly Change
- ↑ 189494 Annual Change

EUC02

- ↓ 1822 Monthly Change
- ↓ 70 Annual Change

EUC03

- ↓ 238 Monthly Change
- ↓ 3 Annual Change

EUC04

- ↑ 100 Monthly Change
- ↑ 195 Annual Change

EUC09

No data recorded

EUC05

- ↑ 4 Monthly Change
- ↑ 7 Annual Change

EUC06

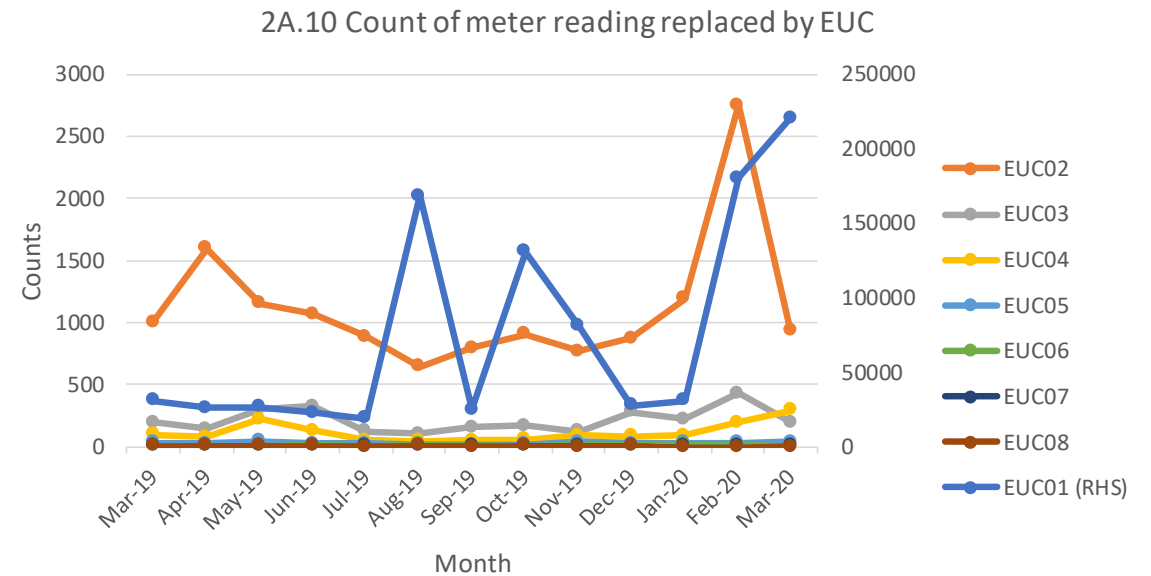
- ↓ 4 Monthly Change
- ↑ 1 Annual Change

EUC07

No Monthly or Annual Change

EUC08

- ↑ 1 Monthly Change
- ↓ 3 Annual Change



Observations:

- EUC01 has seen spikes in the number of replaced meter reads in August and October 2019. Since January 2020, there has been an upward trend in the number of replaced meter reads, a result of several Shipper's cleansing their portfolios.



Appendix – PARR report details

Sr No	Topic	Details	Split By	12 Rolling Months	Format	e.g. For Nov Report	Condition	Comments
1	2A - Estimated & Check Reads used for Gas Allocation, and consumption adjustments for Product Classes 1 & 2	<p><i>Need to count everyday portfolio and count mprn where read has been estimated and no actual present on the same day .</i></p> <p><i>Check Read : For check reads we would need to check , as of reporting day how many class 1 & 2 MPRNs are present with DRE/AMR.</i></p> <p><i>For those MPRNs we have site visit read <=14 months and no subsequent site visit read . Those are outstanding ones per shipper.</i></p>	Class	Annual	Percentage	September	M-2	
2	2A - No Meter Recorded in the Supply Point Register	AQ Band wise , AQ band based on report run day . Class wise different table And AQ Band. Exclude NTS connected Sites & Telemeterd. Exiting SHPK - Topic - Confirmed No Asset Report	Class	Annual	Count & B - Percentage	Nov	M	
3	No Meter Recorded in the Supply Point Register and data flows received by Xoserve	Same as above but additionally need to check if for above MPRNs any Data Flow Means - > Asset Update , C & D Store & Reads received in that month	Class	Annual	Count & B - Percentage	Additional MPRNs		
4	2A - Shipper Transfer Read Performance	M-2 is considered – Open OPNT_REQ_FOLL_CON OPNT_RECEIVED_10	Class	Annual	Percentage	September	M-2	
5	Read Performance	As per frequency we need to check if we have received the read e.g. month read site will check if we have received the read in month .Class and shipper transfer are excluded .6 Monthly read site need to consider yearly ,it is not in UNC. It will be like MUR logic M-2 , exclude sites where class changes happened in M-2 , shipper changes	Class		Percentage	September	M-2	

Appendix – PARR report details



Sr No	Topic	Details	Split By	12 Rolling Months	Format	e.g. For Nov Report	Condition	Comments
6	2A - Meter Read Validity Monitoring	<p>MRE01026 :Reading breached the lower Outer tolerance. MRE01027 :Reading breached the Upper Outer tolerance. MRE01028 :Reading breached the lower Inner tolerance value and no override flag provided. MRE01029 :Reading breached the upper Inner tolerance value and no override flag provided. MRE01030 :Override tolerance passed and override flag provided</p> <p>We can build this from DUK_ARSR , by checking failed reads . DUK_READ = We can get how many successfull reads received based on Status =U . Failed once are with status =F</p>	Reason Codes		Percentage	October	M-1	
7	No reads received for 1,2,3 or 4 years (excludeds estimated	<p>Per class table , per AQ Band ,Need to ignore estimates for all classed Logic is similar to existing SHPK Logic - NO_READ_2Y_3Y_B73200 Here we would need to create 4 counts No reads received for 1 , 2 , 3 , 4 years sepeartely as per layout</p>	AQ Band	Annual	Percentage	Nov	M	
8	2A - AQ Corrections	<p>AQ correction by reason code : Switch Type = 50 , Switch View = 50 , Switch status = LI Reason code per table , Reason code is new field added in ISU BW - DS OUC_SWTDOC Switch Document new field added in DS - ZZ_AQ_REASON</p>	AQ Band	Annual	count	October	M-1	
9	2A - Standard Correction Factors for sites with AQ > 732, MWH	<p>Standard correction factor by AQ Band Count of meter points where replacement reads received by AQ Band ,only for class 3& 4 ,</p>	AQ Band	Annual		Nov	M	Report should only include AQs above 732000. Currently including >=732000
10	2A - Replaced Meter Reads	<p>Replaced meter reads are identified with DUK_READ where read reason = R , Upload Status = U , we would need to add AQ Band either in DUK_READ or consider while processing</p>	AQ Band	Annual		October	M-1	

PAFA@Gemserv.com

