

# PARR Dashboards

---

06 January 2020

PAFA



# 2A.1 Estimated & Check Reads - Product Classes 1 & 2

Report measures the percentage of each shippers portfolio where estimated reads were provided. Count of each shippers portfolio where check reads were not provided

## PC1

### Industry movement:

- ↑ 7.57% - Monthly change
- ↑ 5.73% - Annual change

### Monthly changes:

- ↑ 11.87% Washington
- ↑ 30.00% Praia
- ↑ 100.00% Luanda
- ↓ 1.15% Gitega
- ↓ 3.23% Ankara
- ↓ 16.67% Warsaw

## PC2

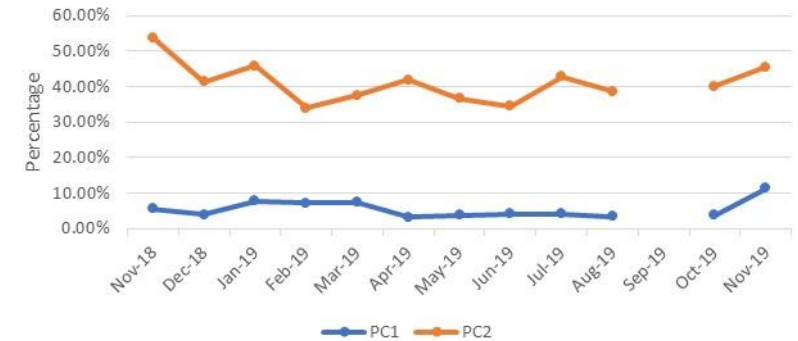
### Industry movement:

- ↑ 5.49% Monthly change
- ↓ 8.29% Annual change

### Monthly changes:

- ↑ 19.55% Tiraspol
- ↑ 47.54% Praia
- ↑ 100.00% Berlin
- ↓ 10.19% Luanda
- ↓ 26.09% Tehran
- ↓ 27.91% Washington

2A.1 Percentage of Estimated Reads for PC1 & PC2



2A.1 Count of Check Reads not completed for PC1 and PC2



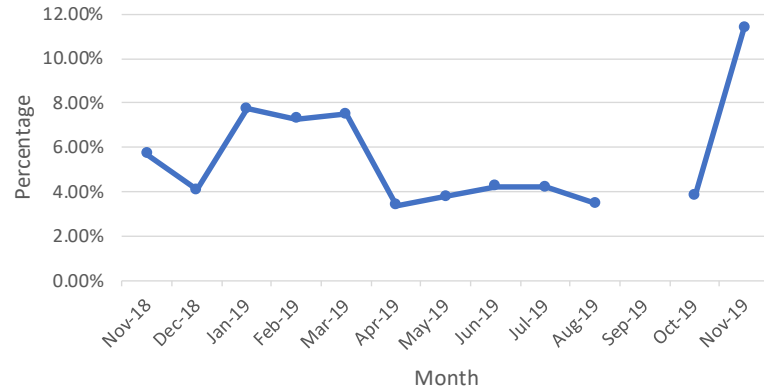
## Observations:

- September estimated reads for PC1 and PC2 to be confirmed in due course.
- Monthly increases in estimated read performance for both PC1 and PC2
- The number of check reads for PC2 has significantly increased since May 2019.

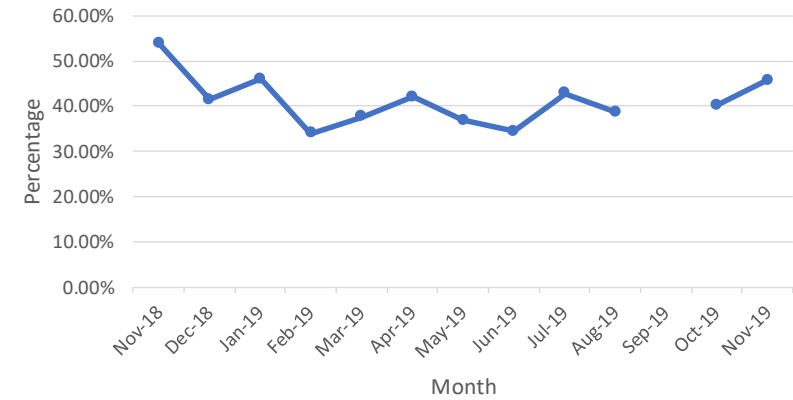
# 2A.1 Estimated & Check Reads - Product Classes 1 & 2



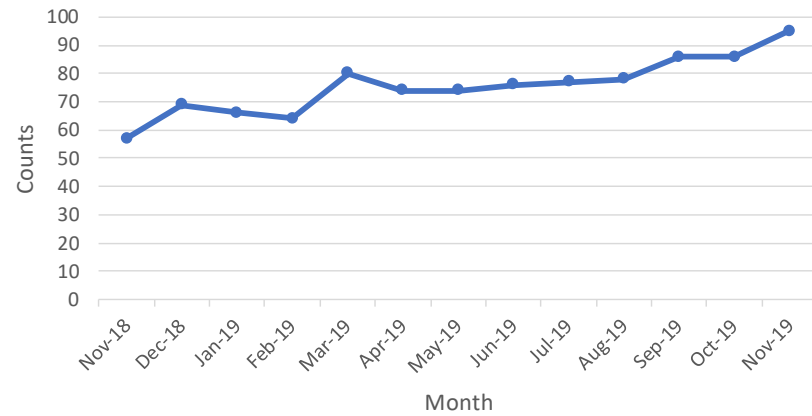
2A.1 PC1 Estimated Read Totals



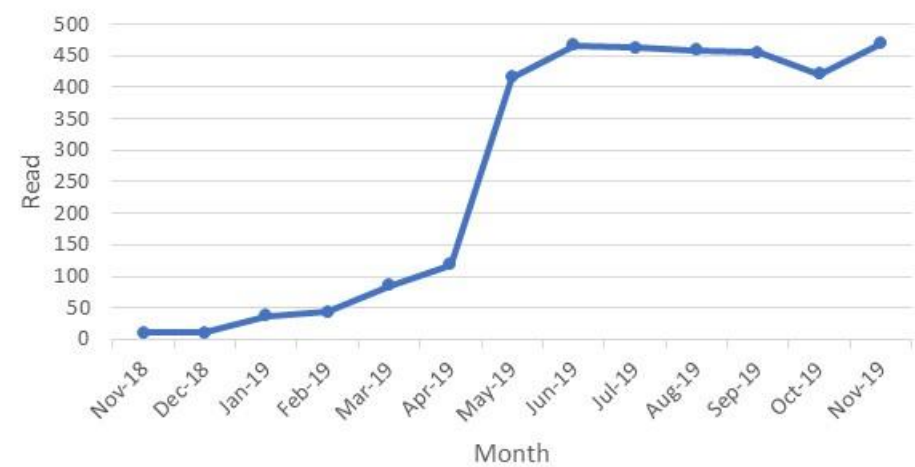
2A.1 PC2 Estimated Read Totals



2A.1 PC1 Check Reads Total



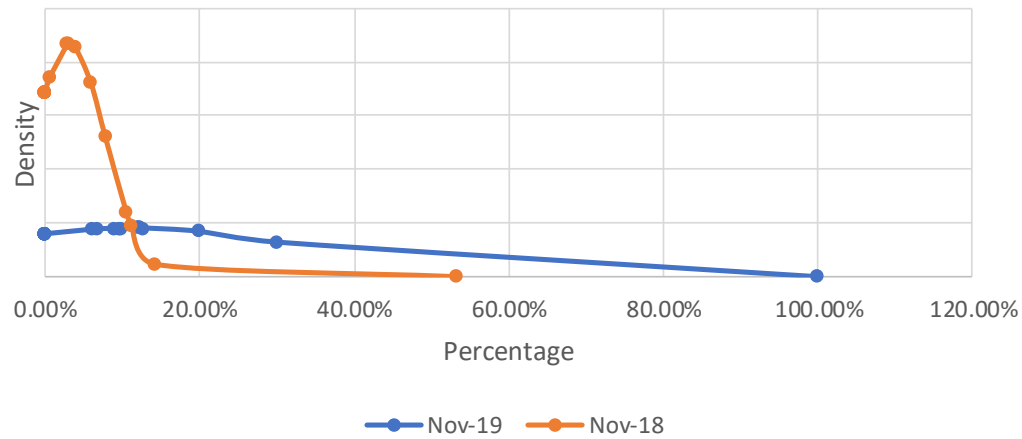
2A.1 PC2 Check Read Totals



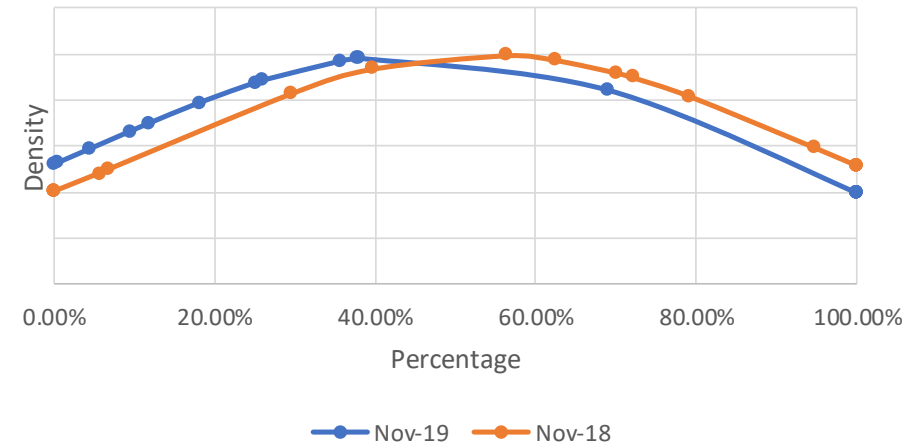
# 2A.1 Estimated & Check Reads - Product Classes 1 & 2



2A.1- 12 Month comparison (Average of PC1 Estimated Reads)



2A.1- 12 month comparison (Average of PC2 Estimated Reads)



## 2A.2 – No Meter Recorded



Report measures the percentage of each shippers portfolio where no meter recorded in the supply point register

### PC1

Highest shippers:  
Valletta **33.33%**

### PC2

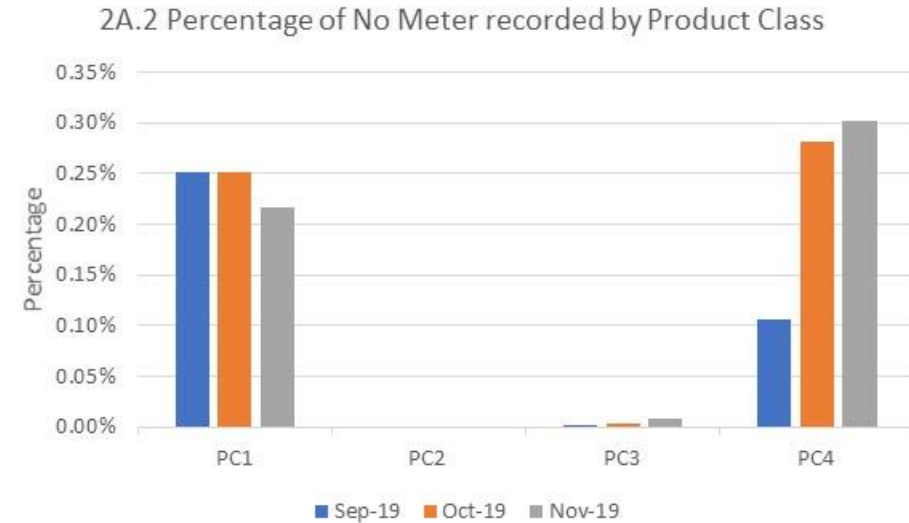
0% for product class

### PC3

Highest shippers:  
Papeete **0.03%**  
Roseau **0.15%**  
Praia **0.39%**

### PC4

Highest shippers:  
Oranjestad **2.25%**  
Pyongyang **2.60%**  
Monaco **100%**



### Observations:

- Increased in the number of no meters recorded on the supply point register has increased significantly within PC4 since September 2019.

# 2A.3 No Meter Recorded and data flows received



Report measures the percentage of each shippers portfolio where no meter recorded in the supply point register and data flows received

**PC1 & PC2**  
0.0% for both product classes

## PC3

**Highest shippers:**

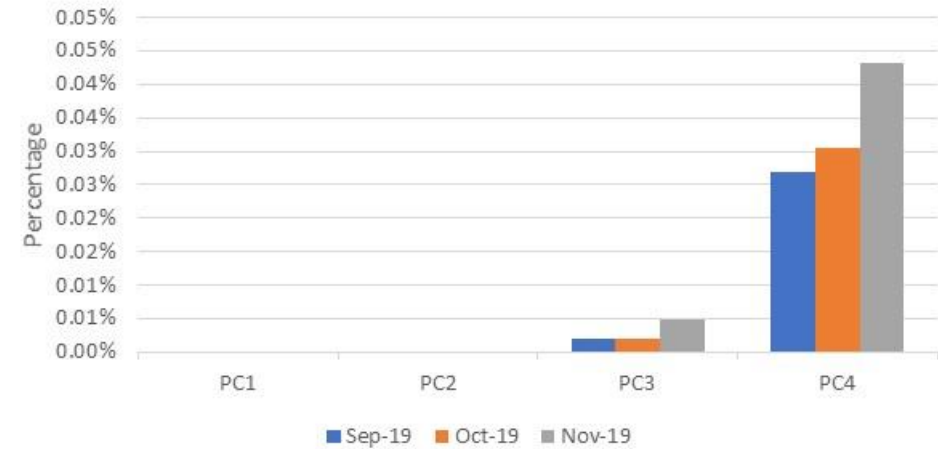
- Papeete 0.02%
- Roseau 0.15%
- Praia 0.17%

## PC4

**Highest shippers:**

- Praia 0.38%
- Saipan 0.44%
- Roseau 0.57%

2A.3 No Meter recorded by Product Class and data flows received



# 2A.4- Shipper Transfer Read Performance

Report measures the percentage of Shipper portfolio of opening meters reads provided following confirmation

**Industry movement:**

- ↓ 2.66% Monthly change
- ↓ 2.51% Annual change

**Monthly changes:**

- ↑ 21.51% Vilnius
- ↑ 33.33% Baghdad
- ↑ 100.00% Paramaribo
- ↓ 26.98% Luanda
- ↓ 30.00% Dili
- ↓ 32.17% Manama

**Observations:**

- Transfer read performance remains low and is significantly below the UNC obligation
- Average transfer read performance over the last 12 months is 32.73%

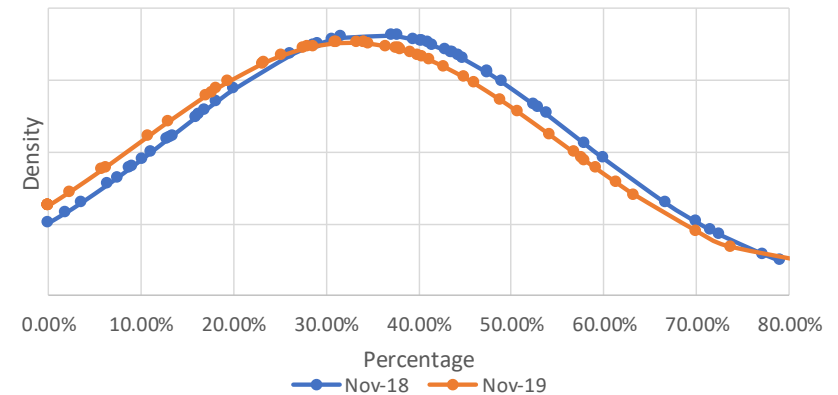
**Recommendations:**

- Industry education on obligation to provide opening meter readings following confirmation.
- Industry engagement on the difficulties providing opening meter reading following confirmation.

2A.4 Percentage of opening meter reads provided by industry total



2A.4- 12 Month Comparison of Shipper Transfer Read Performance

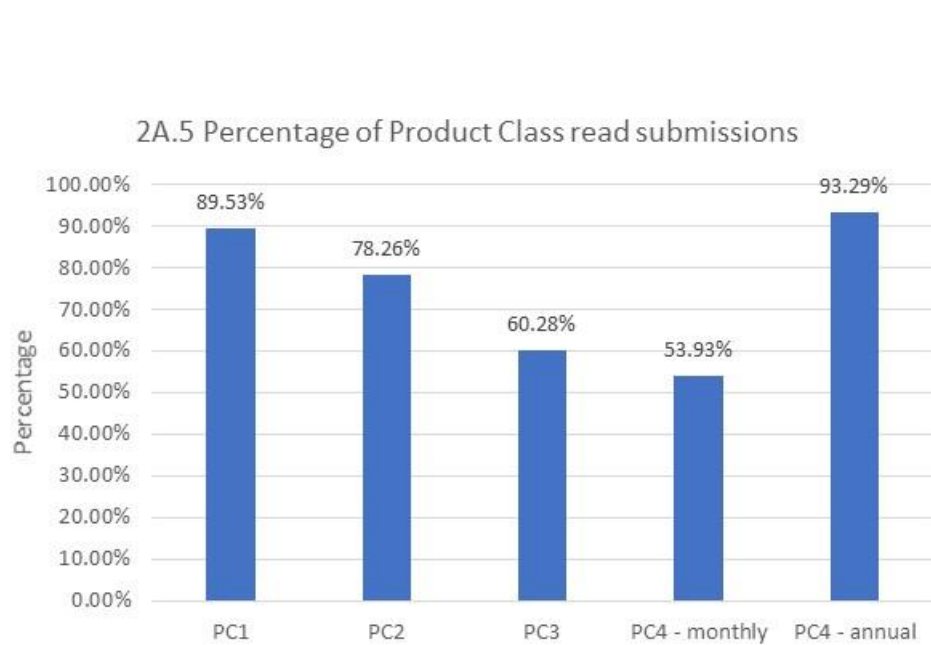


# 2A.5- Read Performance



Report measures the percentage of Shipper portfolio submitting reads in November 2019.

PC4 Monthly and Annually read measures the percentage of Shipper portfolio submitting reads in October 2019.



**PC1**  
 50.00% Monaco  
 66.67% Valletta  
 77.53% Reykjavik

**PC2**  
 0% Praia  
 0% Ramallah  
 0% Roseau  
 0% Warsaw

**PC3**  
 0% Luxembourg  
 0% Djibouti  
 0% Nuuk

**PC4 (Monthly)**  
 0% Bern  
 0% Baghdad  
 0% Monaco  
 0% Warsaw  
 0% Castries  
 0% Nairobi  
 0% Pyongyang  
 0% Maputo

**PC4 (Annual)**  
 5.44% Bratislava  
 8.33% Pyongyang

**Observations:**

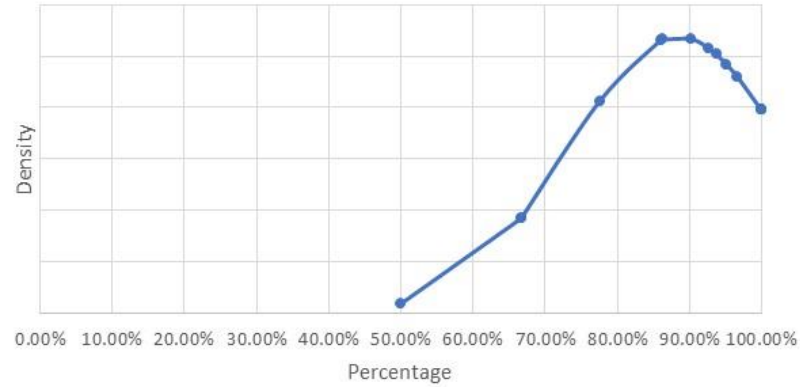
- PC2 and PC3 incorporates the values from the new reports
- Although read performance is higher, it is still lower than the UNC obligation for all product classes



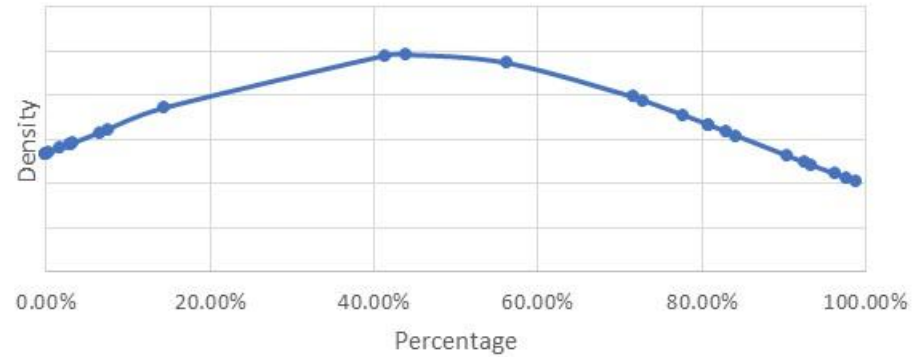
# 2A.5- Read Performance



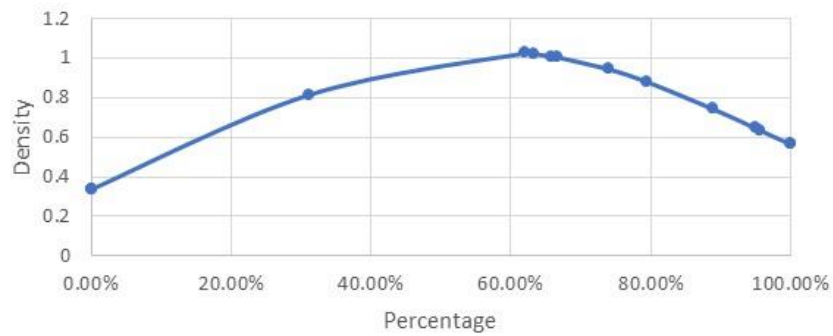
2A.5 Distribution of percentage of PC1 sites providing meter reads



2A.5 Distribution of percentage of PC3 sites providing meter reads



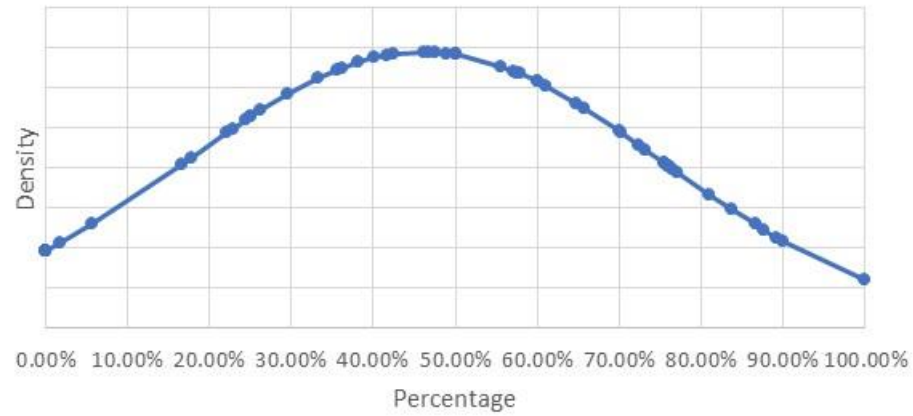
2A.5 Distribution of percentage of PC2 sites providing meter reads



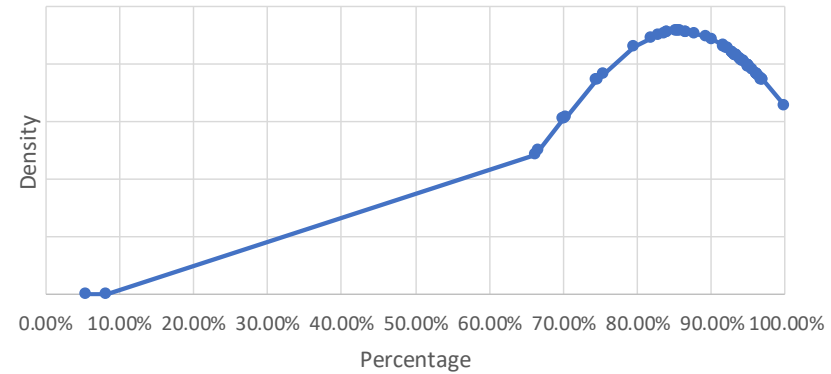
# 2A.5- Read Performance



2A.5 Distribution of percentage of PC4 Monthly sites providing meter reads

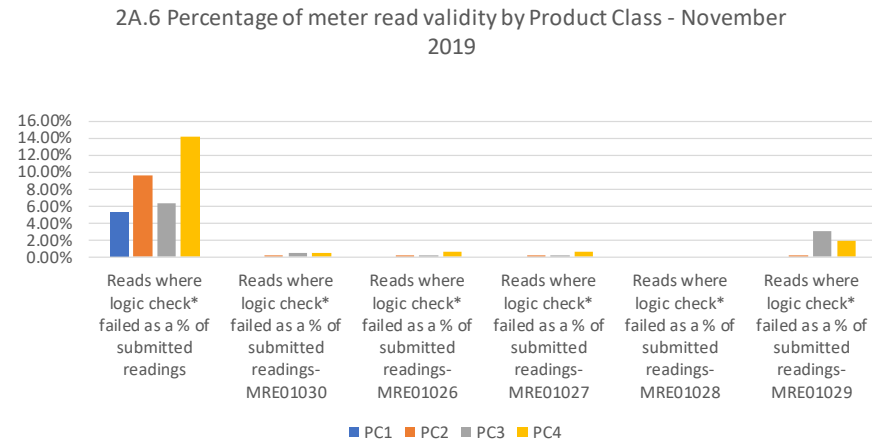


2A.5 Distribution of percentage of PC4 Annual sites providing meter reads



# 2A.6 Meter Read Validity Monitoring

Report measures the percentage of Shipper portfolio where reads submitted failed validation.



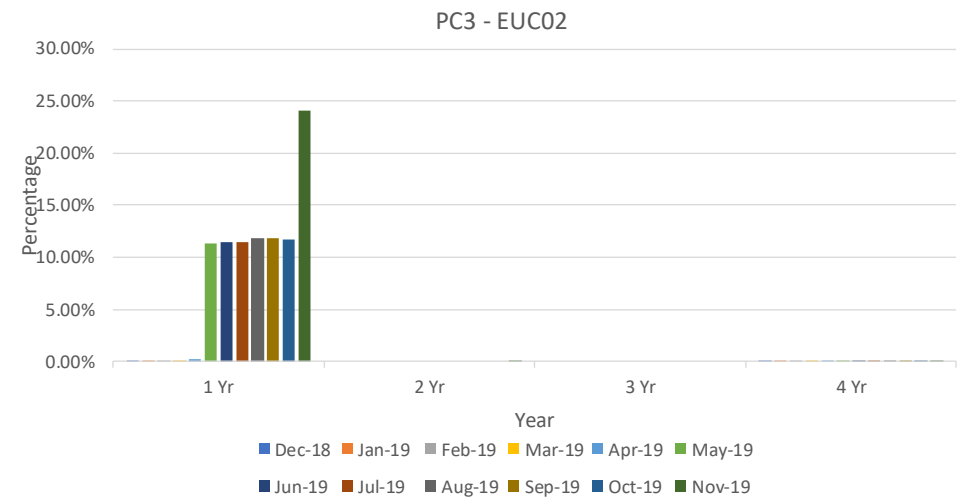
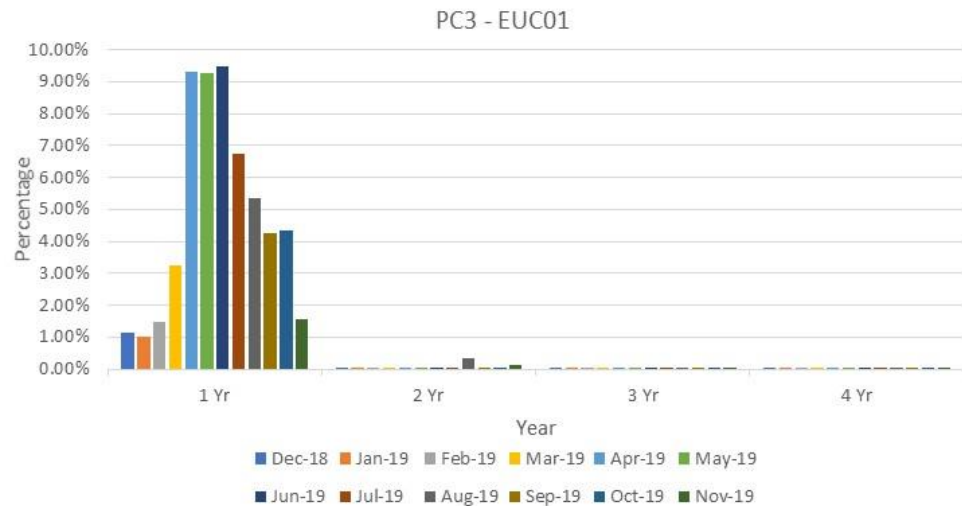
Product Class	Reads where logic check failed as a % of submitted readings	MRE01030	MRE01026	MRE01027	MRE01028	MRE01029
1	Reykjavik – 8.95%					
2	Ramallah – 49.18%	Saipan – 1.06%	Saipan – 0.44%	Luanda – 2.85%		Gitega – 0.43% Washington – 0.43%
3	Lisbon – 52.43%	Monaco – 8.44%	Gitega – 0.63%	Roseau – 3.11%		Monaco – 30.43%
4	Thimphu – 73.79%	Marigot – 5.00%	Marigot – 10.00%	Valletta – 5.62%		Bissau – 40.00%

# 2A.7 No Reads Received for 1, 2, 3 or 4 years

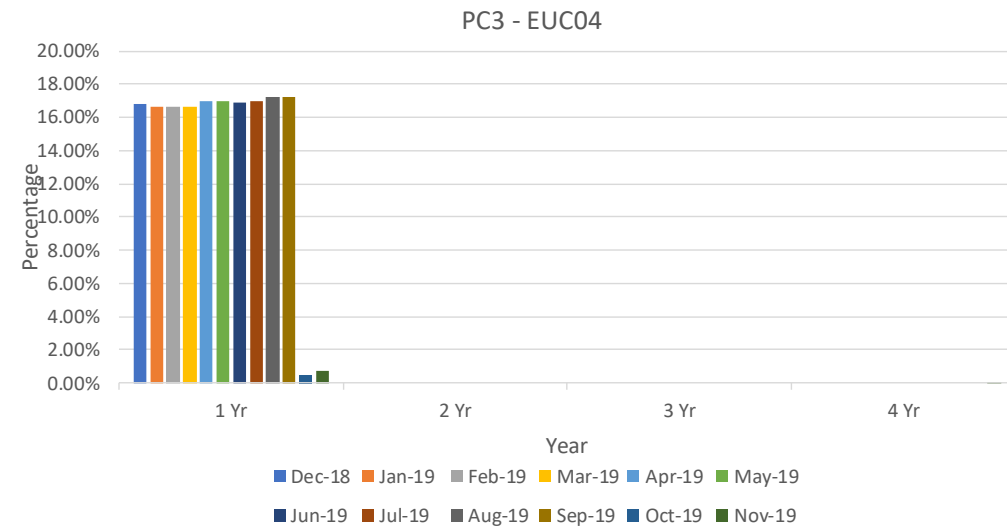
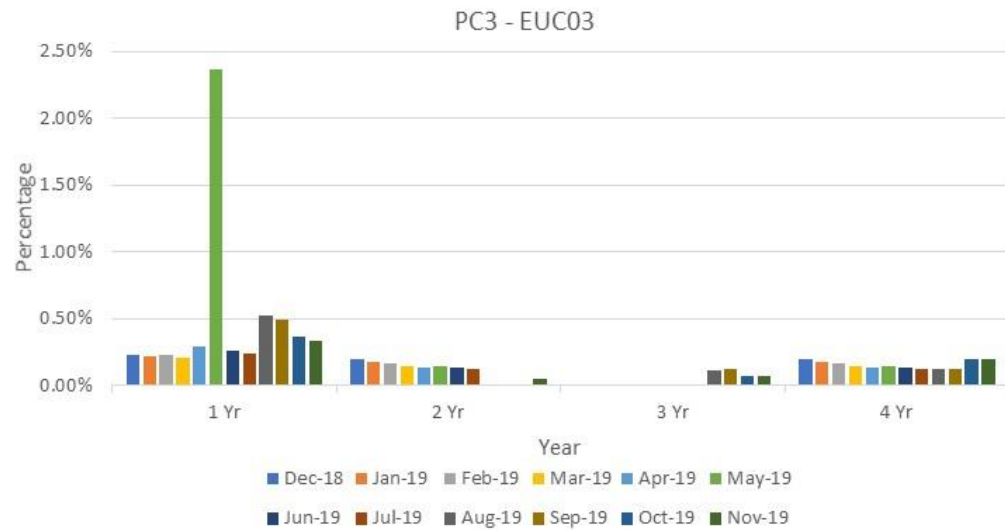


Report measures the percentage of Shipper portfolio in the specified AQ band without a meter reading for the specified period.

## PC1 & PC2 Limited or no data both product classes



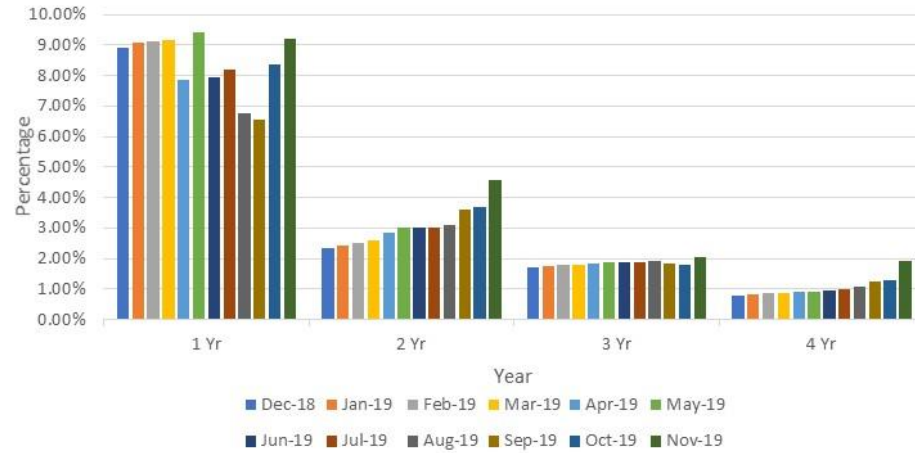
# 2A.7 No Reads Received for 1, 2, 3 or 4 years



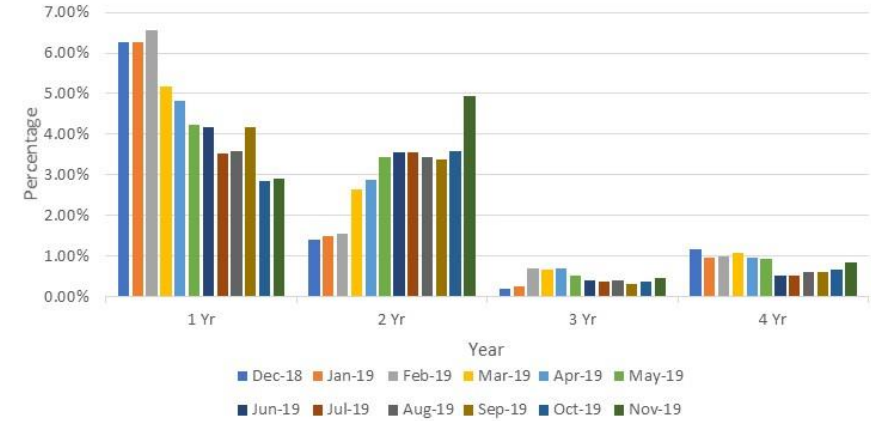
# 2A.7 No Reads Received for 1, 2, 3 or 4 years



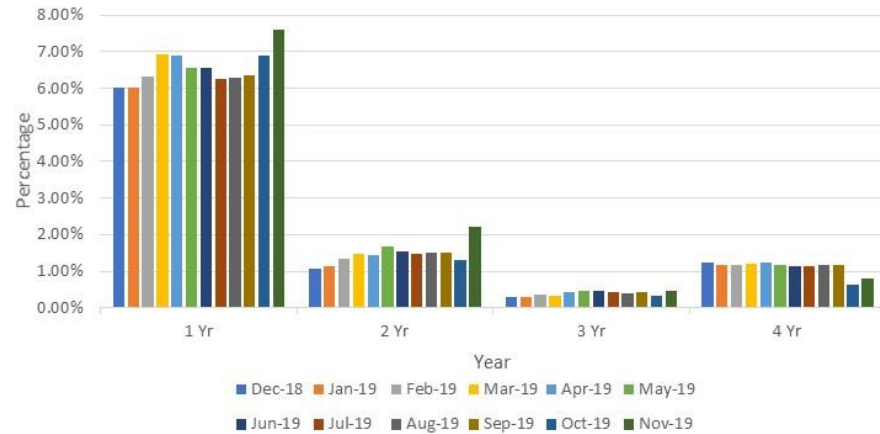
PC4 - EUC01



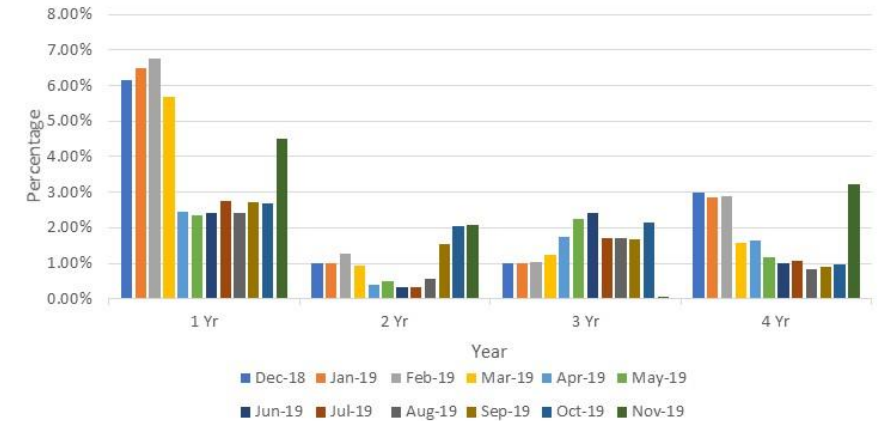
PC4 - EUC03



PC4 - EUC02



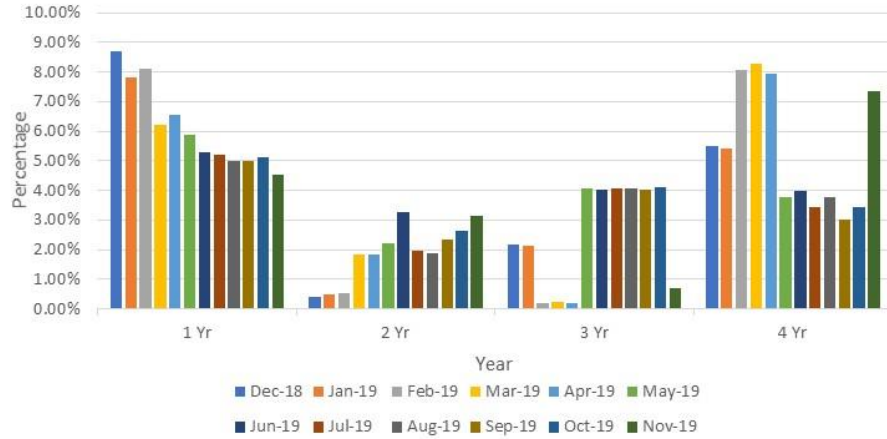
PC4 - EUC04



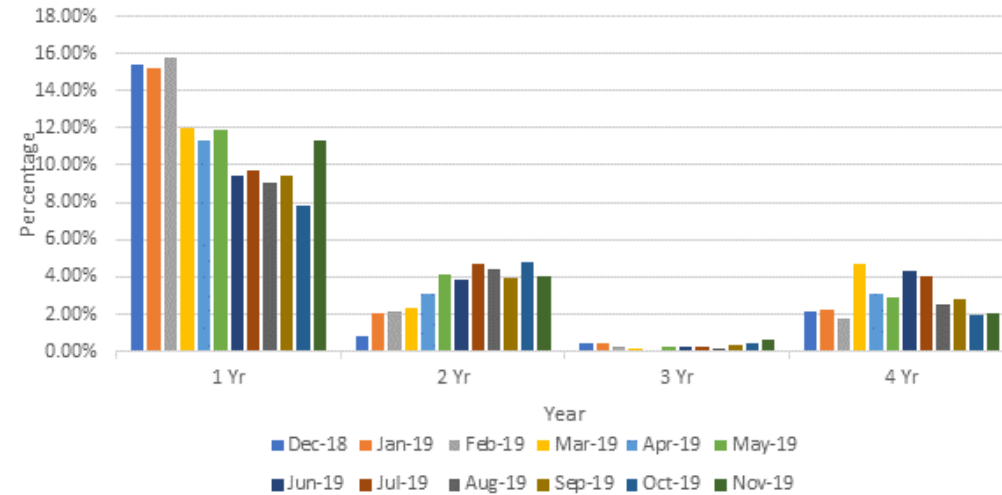
# 2A.7 No Reads Received for 1, 2, 3 or 4 years



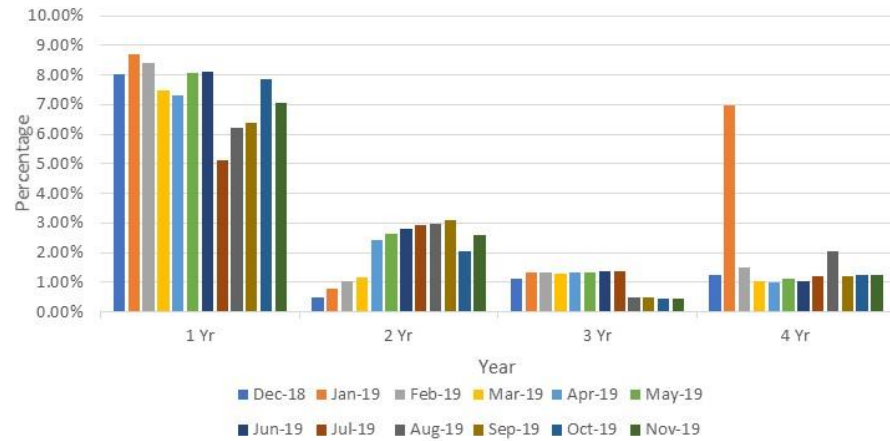
PC4 - EUC05



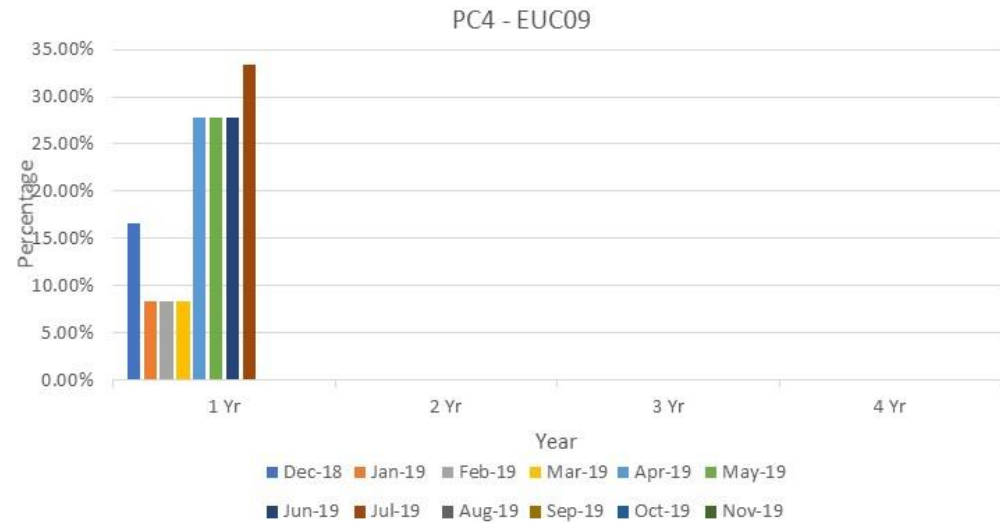
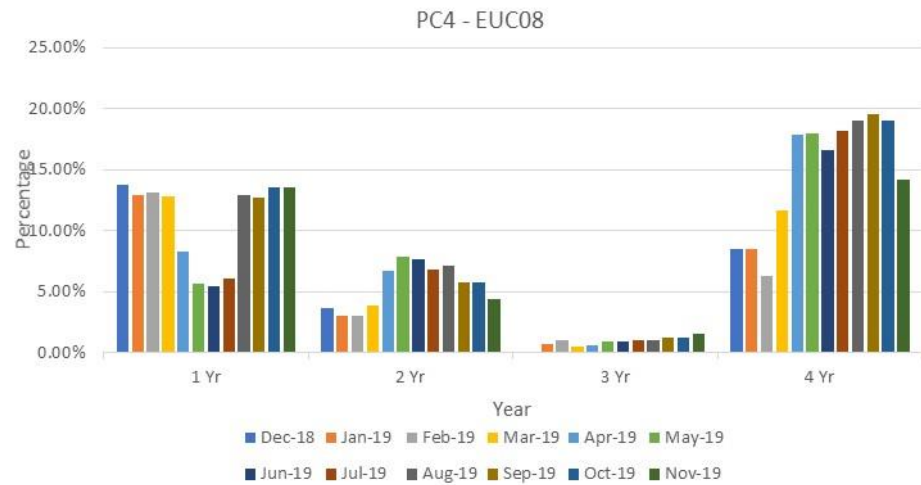
PC4 - EUC07



PC4 - EUC06



# 2A.7 No Reads Received for 1, 2, 3 or 4 years





# 2A.8 AQ Correction by Reason Code

Report measures the count of Shipper Portfolio of MPRNs where AQ Correction process Used

Changes in total number of AQ corrections used

**Reason Code 01- Confirmed Theft**

↑ 1 Monthly Change  
↓ 15 Annual Change

**Reason Code 02- Change in Consumer Plant**

↑ 724 Monthly Change  
↓ 967 Annual Change

**Reason Code 03- Commencement of New Business**

↑ 112 Monthly Change  
↓ 116 Annual Change

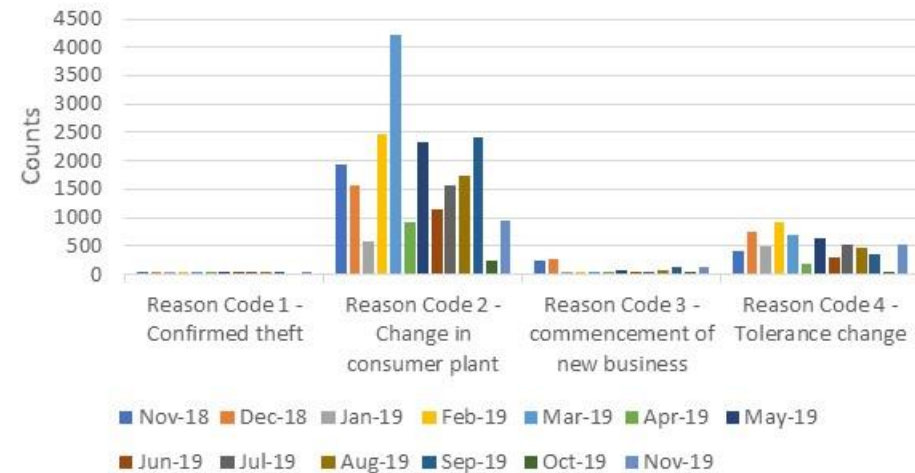
**Reason Code 04- Tolerance Change**

↑ 493 Monthly Change  
↑ 117 Annual Change

**Observations:**

- Change in consumer plants continues to account for the highest proportion of AQ corrections.
- Change in consumer plant spiked in March 2019, which has since decreased.

2A.8 Count of AQ Corrections used by reason code



# 2A.9 Standard CF AQ > 732,000 kWh

Report measures the count of sites with an AQ>732,000 kWh, but having a standard correct factor

## EUC04

↑ 19 Monthly Change  
 ↓ 1760 Annual Change

## EUC05

↓ 5 Monthly Change  
 ↓ 140 Annual Change

## EUC06

↑ 6 Monthly Change  
 ↓ 35 Annual Change

## EUC07

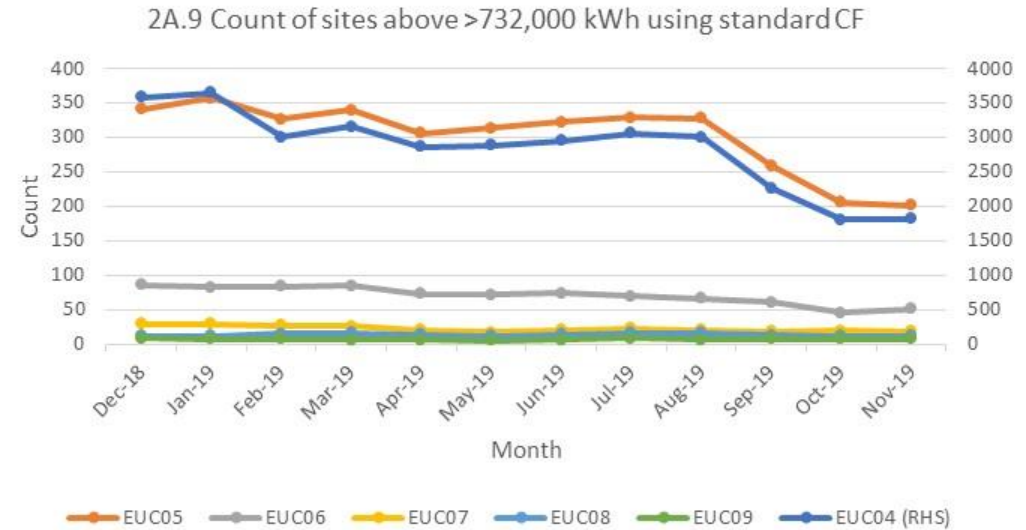
↓ 1 Monthly Change  
 ↓ 11 Annual Change

## EUC08

↓ 1 Monthly Change  
 No Annual Change

## EUC09

No Monthly Change  
 ↓ 1 Annual Change



### Observations:

- EUC04 continue to track significantly above the industry average and a much higher use of standard correction factors compared to other EUC bands
- The use of standard correction factors has decreased significantly since October 2018. with significant reductions in recent months.

# 2A.10 Replaced Meter Reads

Report measures the count of meter reading replacements which results in reconciliation adjustments.

## EUC01

↓ 49941 Monthly Change  
 ↑ 47247 Annual Change

## EUC02

↓ 136 Monthly Change  
 ↓ 571 Annual Change

## EUC03

↓ 42 Monthly Change  
 ↓ 224 Annual Change

## EUC04

↑ 27 Monthly Change  
 ↓ 15 Annual Change

## EUC09

**No monthly or annual changes**

## EUC05

↑ 14 Monthly Change  
 ↑ 5 Annual Change

## EUC06

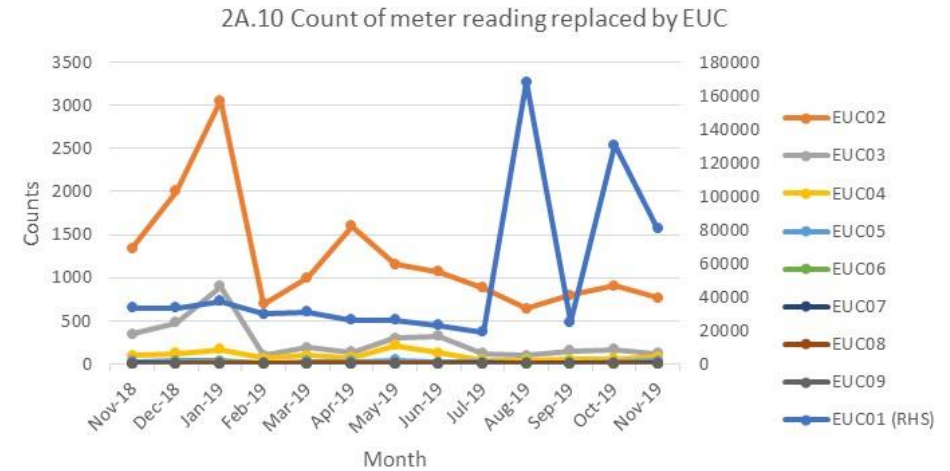
↑ 4 Monthly Change  
 ↑ 2 Annual Change

## EUC07

↑ 1 Monthly Change  
 ↑ 3 Annual Change

## EUC08

↓ 4 Monthly Change  
 ↓ 1 Annual Change



### Observations:

- EUC01 has seen an upward trend in replaced meter reads in August 2019 and again in October due two individual Shippers performance

- These are replacing estimated reads with actual reads as a result of sites moving from PC4 to PC3.

# Appendix – PARR report details



Sr No	Topic	Details	Split By	12 Rolling Months	Format	e.g. For Nov Report	Condition	Comments
1	2A - Estimated & Check Reads used for Gas Allocation, and consumption adjustments for Product Classes 1 & 2	<p>Need to count everyday portfolio and count mprn where read has been estimated and no actual present on the same day .</p> <p>Check Read : For check reads we would need to check , as of reporting day how many class 1 &amp; 2 MPRNs are present with DRE/AMR.</p> <p>For those MPRNs we have site visit read &lt;=14 months and no subsequent site visit read . Those are outstanding ones per shipper.</p>	Class	Annual	Percentage	September	M-2	
2	2A - No Meter Recorded in the Supply Point Register	AQ Band wise , AQ band based on report run day . Class wise different table And AQ Band. Exclude NTS connected Sites & Telemeterd. Exiting SHPK - Topic - Confirmed No Asset Report	Class	Annual	Count & B - Percentage	Nov	M	
3	No Meter Recorded in the Supply Point Register and data flows received by Xoserve	Same as above but additionally need to check if for above MPRNs any Data Flow Means - > Asset Update , C & D Store & Reads received in that month	Class	Annual	Count & B - Percentage	Additional MPRNs		
4	2A - Shipper Transfer Read Performance	M-2 is considered – Open OPNT_REQ_FOLL_CON OPNT_RECEIVED_10	Class	Annual	Percentage	September	M-2	
5	Read Performance	As per frequency we need to check if we have received the read e.g. month read site will check if we have received the read in month .Class and shipper transfer are excluded .6 Monthly read site need to consider yearly ,it is not in UNC. It will be like MUR logic M-2 , exclude sites where class changes happened in M-2 , shipper changes	Class		Percentage	September	M-2	

# Appendix – PARR report details



Sr No	Topic	Details	Split By	12 Rolling Months	Format	e.g. For Nov Report	Condition	Comments
6	2A - Meter Read Validity Monitoring	<p>MRE01026 :Reading breached the lower Outer tolerance.                      MRE01027 :Reading breached the Upper Outer tolerance.                      MRE01028 :Reading breached the lower Inner tolerance value and no override flag provided.                      MRE01029 :Reading breached the upper Inner tolerance value and no override flag provided.                      MRE01030 :Override tolerance passed and override flag provided</p> <p>We can build this from DUK_ARSR , by checking failed reads . DUK_READ = We can get how many successfull reads received based on Status =U . Failed once are with status =F</p>	Reason Codes		Percentage	October	M-1	
7	No reads received for 1,2,3 or 4 years ( excludeds estimated	<p>Per class table , per AQ Band ,Need to ignore estimates for all classed                      Logic is similar to existing SHPK Logic - NO_READ_2Y_3Y_B73200                      Here we would need to create 4 counts No reads received for 1 , 2 , 3 , 4 years                      sepeartely as per layout</p>	AQ Band	Annual	Percentage	Nov	M	
8	2A - AQ Corrections	<p>AQ correction by reason code :                      Switch Type = 50 , Switch View = 50 , Switch status = LI                      Reason code per table , Reason code is new field added in ISU BW - DS                      OUC_SWTD0C Switch Document new field added in DS - ZZ_AQ_REASON</p>	AQ Band	Annual	count	October	M-1	
9	2A - Standard Correction Factors for sites with AQ > 732, MWH	<p>Standard correction factor by AQ Band                      Count of meter points where replacement reads received by AQ Band ,only for class 3&amp; 4 ,</p>	AQ Band	Annual		Nov	M	Report should only include AQs above 732000. Currently including >=732000
10	2A - Replaced Meter Reads	<p>Replaced meter reads are identified with DUK_READ where                      read reason = R , Upload Status = U , we would need to add AQ Band either in                      DUK_READ or consider while processing</p>	AQ Band	Annual		October	M-1	

PAFA@Gemserv.com

