

PARR Dashboards

11 December 2018

PAFA



2A.1 Estimated & Check Reads - Product Classes 1 & 2



Report measures the percentage of each shippers portfolio where estimated reads were provided. Count of each shippers portfolio where check reads were provided

PC1

- ↓ 4.45% Harwich
- ↓ 3.96% Folkstone
- ↓ 3.30% Mumbles
- ↑ 0.625% - Monthly change
- ↓ 8.39% - Annual change
- ↑ 17.50% Eastbourne
- ↑ 7.33% Ramsey
- ↑ 2.37% Southsea Clarence
- Eastbourne **17.50%**, Southsea
- Clarence **11.07%**, Harwich **12.26%**

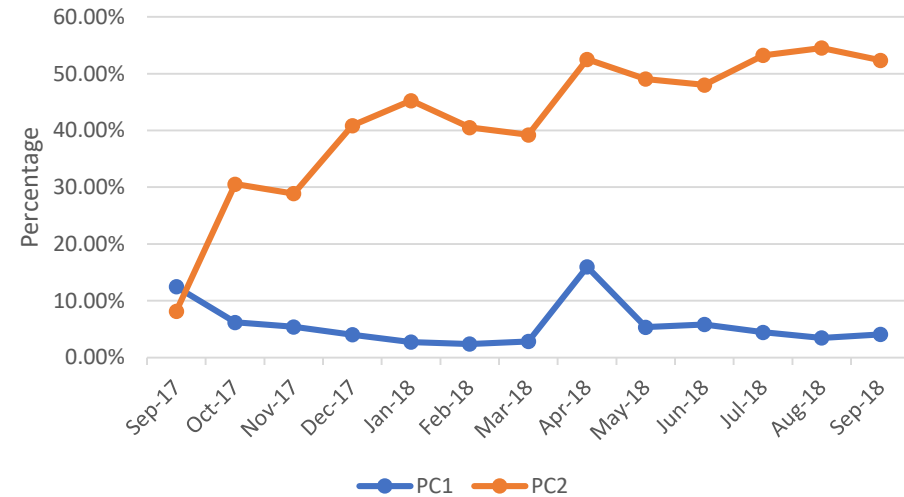
PC2

- ↓ 12.89% Colwyn Bay
- ↓ 10.73% Gravesend
- ↓ 8.43% Eastbourne
- ↓ 2.16% Monthly change
- ↑ 44.19% Annual change
- ↑ 10.00% Canary Wharf
- ↑ 4.44% Folkstone
- ↑ 1.49% Harwich
- Ramsey **100%**, Clacton **100%**,
- Harwich **95.97%**

Industry trends:

- PC1 – Peak of 15.98% on April 2018
- PC2 - Period between August 2017 and November 2017 because of the increase in Estimated reads submitted

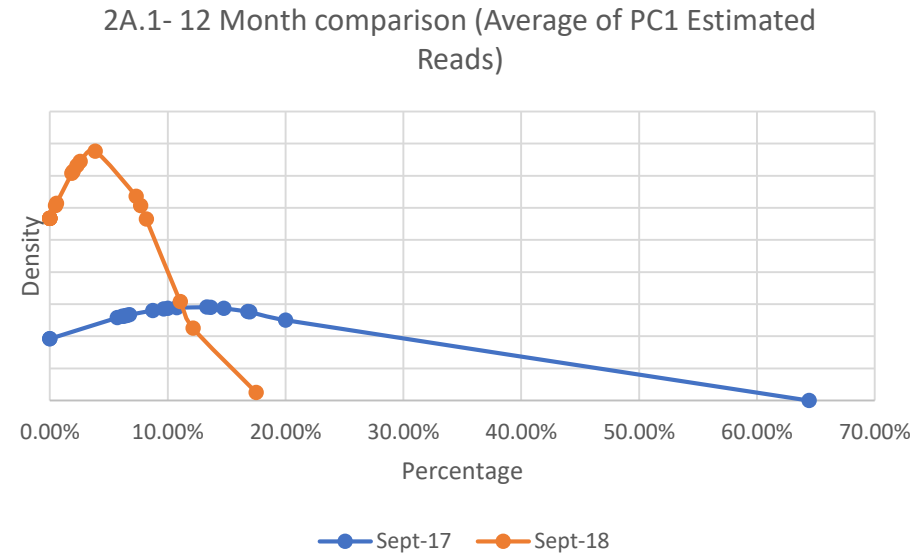
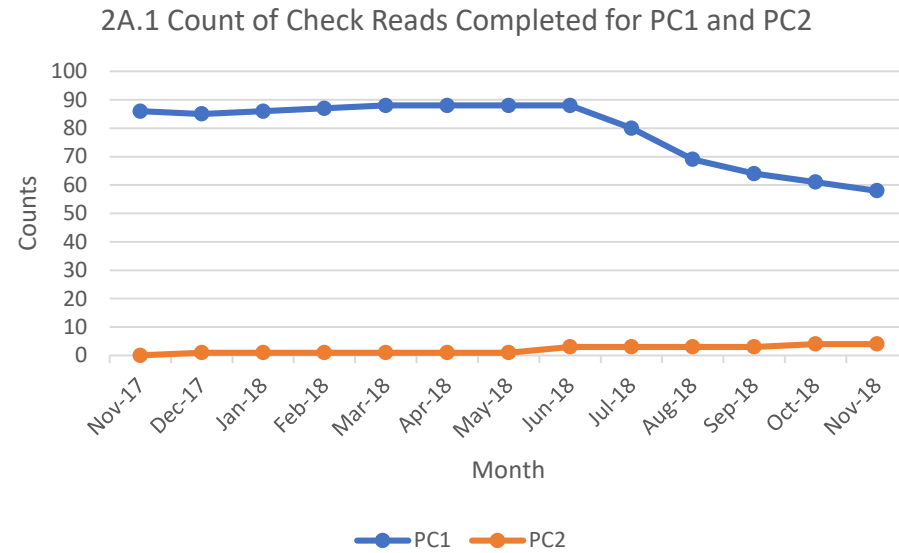
2A.1 Percentage of Estimated Reads for PC1 & PC2



Shipper Performance Observations:

- Southsea Clarence, Mumbles and Harwich continue to be the poorest performers in PC1.
- Ramsey, Clacton and Harwich are the poorest performers in PC2 according to September 2018 data.

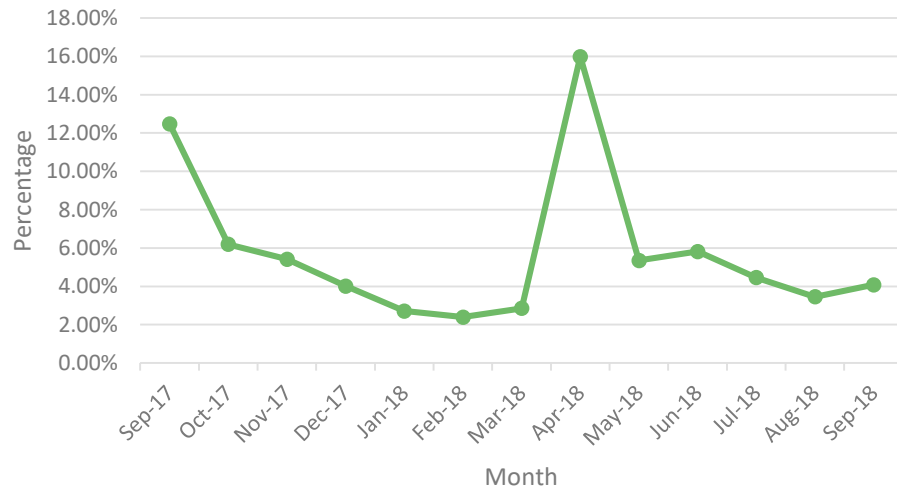
2A.1 Estimated & Check Reads - Product Classes 1 & 2



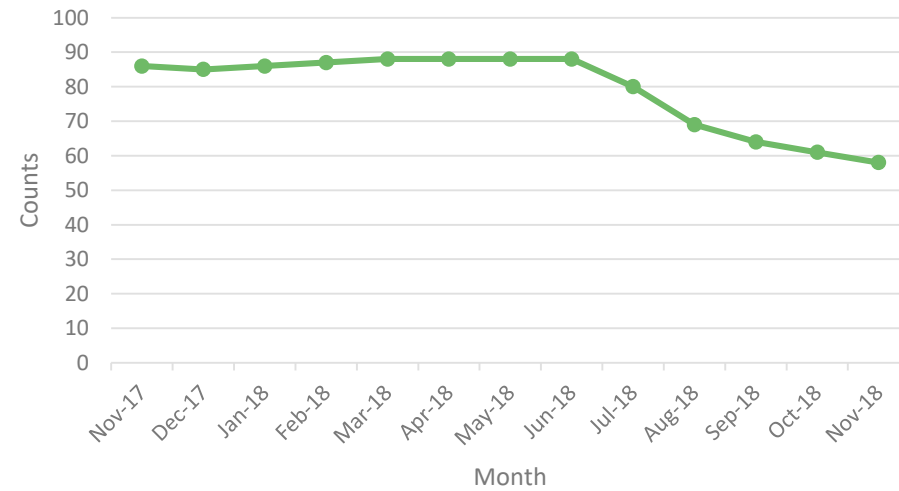
2A.1 Estimated & Check Reads - Product Classes 1 & 2



2A.1 PC1 Estimated Read Total



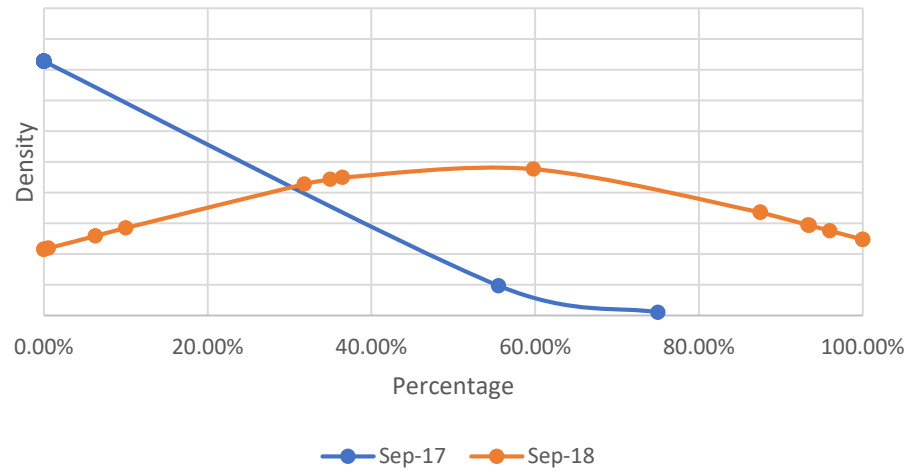
2A.1 PC1 Check Read Total



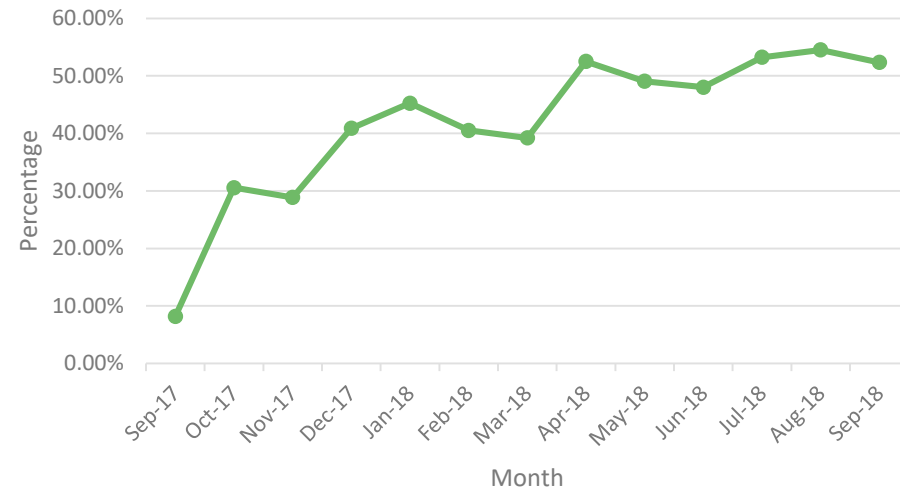
2A.1 Estimated & Check Reads - Product Classes 1 & 2



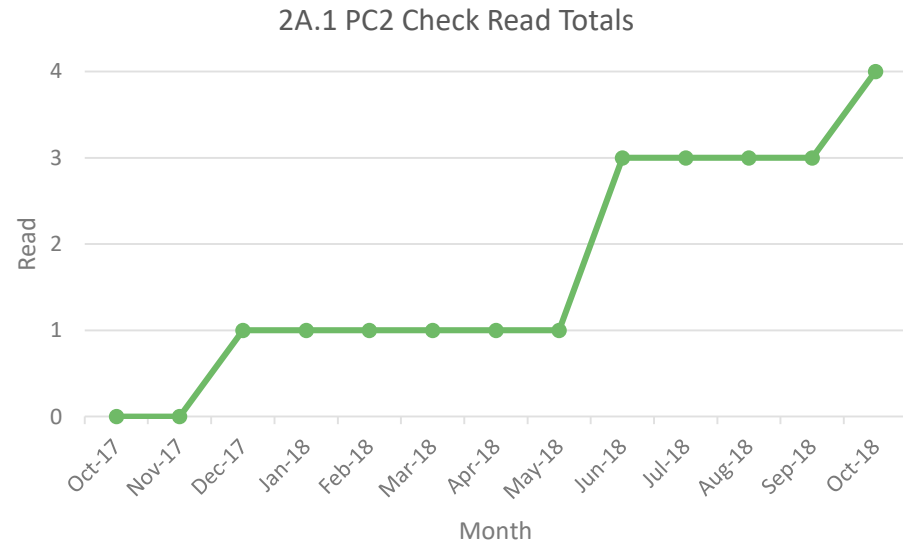
2A.1- 12 month comparison (Average of PC2 Estimated Reads)



2A.1 PC2 Estimated Read Totals



2A.1 Estimated & Check Reads - Product Classes 1 & 2



2A.2 – No Meter Recorded

Report measures the count of each shippers portfolio where no meter recorded in the supply point register

PC1 & PC2 0% for both product classes

PC3

- ↓ 0.016% Hastings
- ↑ 0.028% Weymouth Bandstand
- ↑ 0.022% Falmouth
- ↑ 0.015% Southsea Clarence

↑ 0.012% Monthly Change
↑ 0.019 % Annual Change

Falmouth **0.051%**, Weymouth Bandstand **0.046%**, Southsea Clarence **0.023%**

PC4

- ↓ 0.57% Eastbourne
- ↓ 0.053% Birnbeck
- ↓ 0.086% Lytham
- ↑ 0.001% Monthly change
- ↓ 0.009% Annual Change

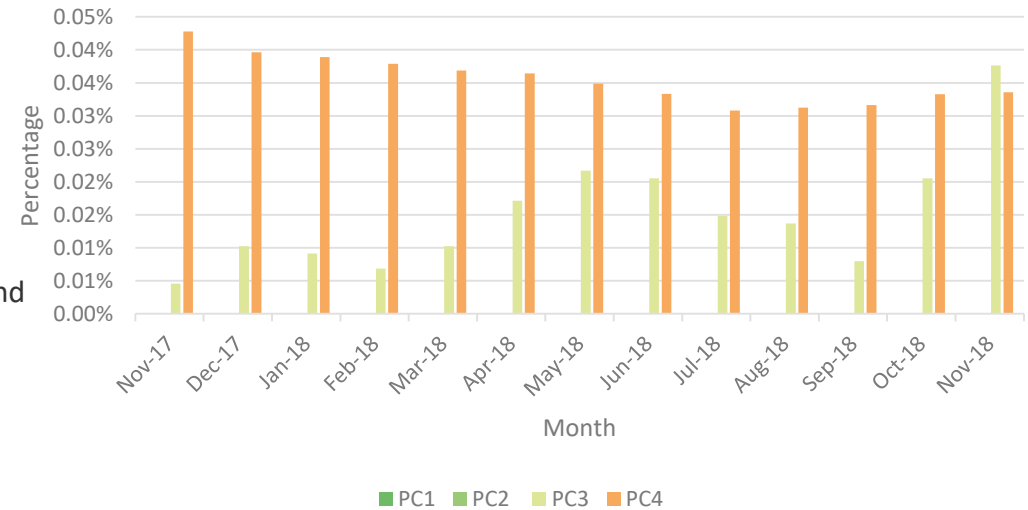
↑ 0.037% Burnham-on-Sea
↑ 0.008% Mumbles
↑ 0.009% Folkstone

Lytham **0.589%**, Bankside **0.456%**,
Mumbles **0.374%**

Industry trends:

- Increase in No Meter Recorded for PC3 from September to November 2018
- PC3 reached a peak in May 2018 which then declined to match the rate in June 2018
- PC4 – Decrease in 0.009% in the past twelve months

2A.2 Percentage of No Meter recorded by Product Class



Shipper Performance Observations:

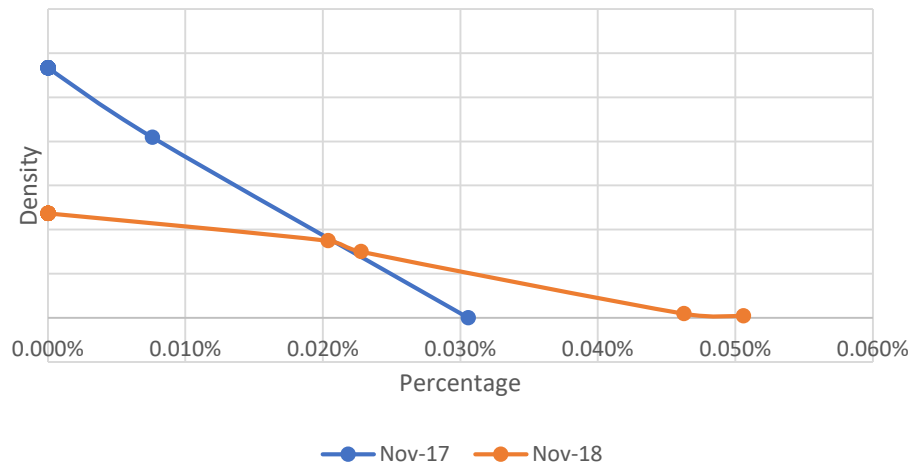
- PC3 - Escalate performance with CAMs for Falmouth and Weymouth Bandstand
- PC4 -Escalate performance with CAMs for Colwyn Bay, Herne Bay, Saltburn, Claremont and Deal

2A.2 – No Meter Recorded

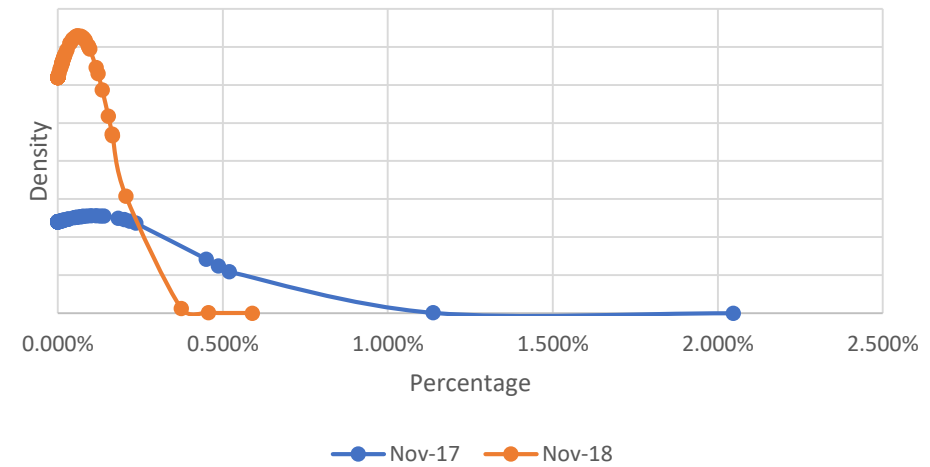


PC1 & PC2 0% for both product classes

2A.2- 12 Month comparison (No Meter recorded PC3)



2A.2- 12 Month comparison (No Meter recorded PC4)



2A.3 No Meter Recorded and data flows received



Report measures the count of each shippers portfolio where no meter recorded in the supply point register and data flows received

PC1 & PC2

0.0% for both product classes

PC3

- ↓ 1 Hastings
- ↓ 1 Clevedon
- ↑ 8 Falmouth
- ↑ 2 Southsea Clarence
- ↑ 1 Weymouth Bandstand

- ↑ 9 Monthly Change
- ↑ 20 Annual Change
- Falmouth **18**, Southsea Clarence **3**,
Weymouth Bandstand **3**

PC4

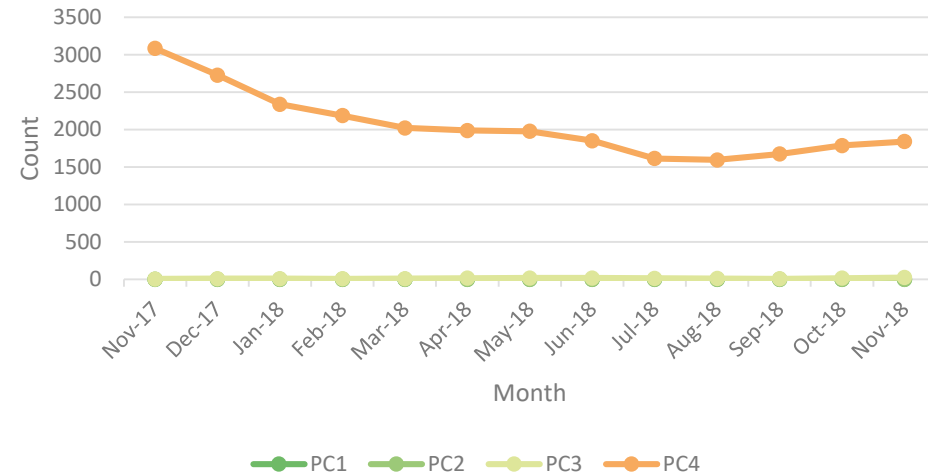
- ↓ 6 Saltburn
- ↓ 5 Lytham
- ↓ 5 Eastbourne
- ↑ 26 Colwyn Bay
- ↑ 8 Felixstowe
- ↑ 8 Beaumaris
- ↑ 54 Monthly Change
- ↓ 1243 Annual Change

Colwyn Bay **901**, Deal **285**, Claremont **110**

Industry trends:

- PC4 - Industry trend has declined over the last twelve months but the trend from July 2018 has seen an increase which will be monitored over the coming months

2A.3 No Meter recorded by Product Class and data flows received



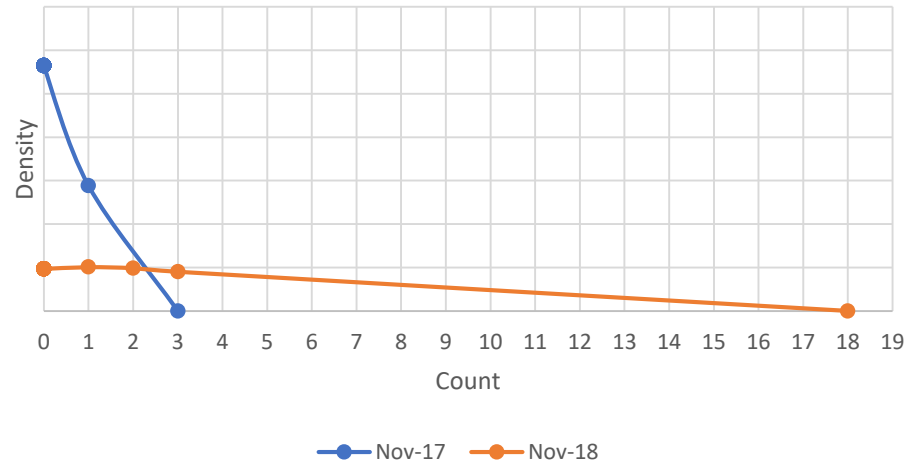
Shipper Performance Observations:

- PAFA to perform additional analysis of PC4 performance

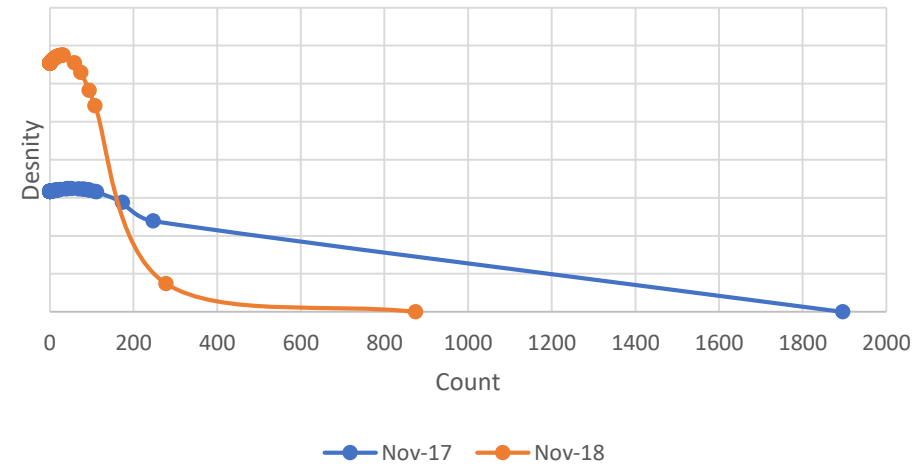
2A.3 No Meter Recorded and data flows received



2A.3 - 12 Month comparison PC3



2A.3 - 12 Month comparison PC4



2A.4- Shipper Transfer Read Performance

Report measures the percentage of Shipper portfolio of opening meters reads provided following confirmation

- ↓ 50.00% Gravesend
- ↓ 19.74% Barrier Gardens
- ↓ 19.63% Birnbeck
- ↑ 24.83% Lytham
- ↑ 21.91% Blackpool South
- ↑ 18.42% Eastbourne

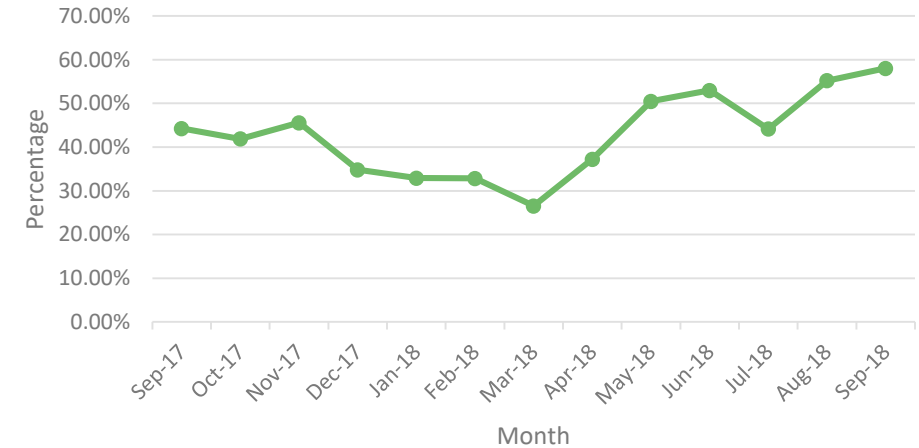
↑ 2.80% - Monthly change

↑ 13.74% - Annual change

Industry trends:

- Improvements across the industry from March 2018
- September 2018 meter readings at the highest rate over the last 12 months (58.01%)

2A.4 Percentage of opening meter reads provided by industry total



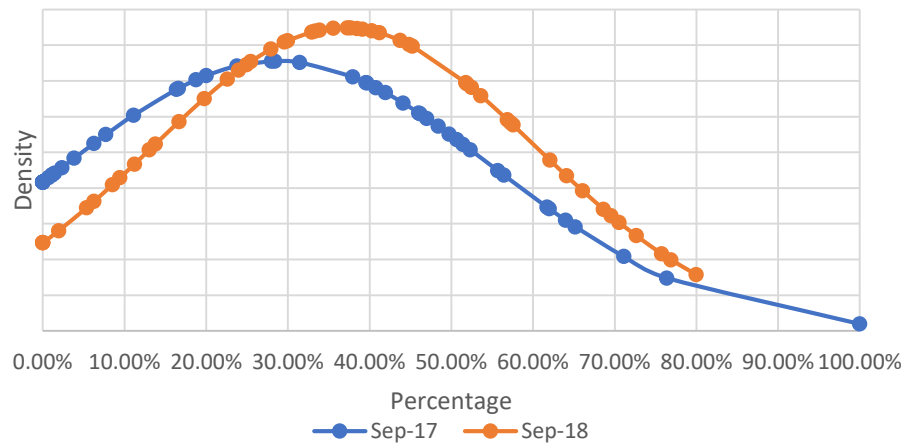
Shipper Performance Observations:

- Industry education on obligation to provide opening meter readings following confirmation
- Possible industry engagement on the difficulties providing opening meter reading following confirmation
- Poorest performers will be escalated with CAMs

2A.4- Shipper Transfer Read Performance



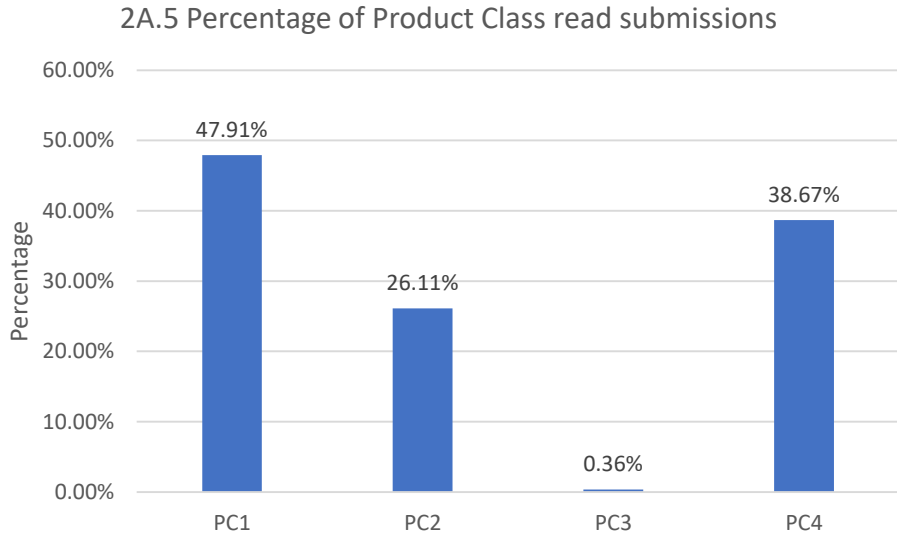
2A.4 - 12 Month Comparison of Shipper Transfer Read Performance



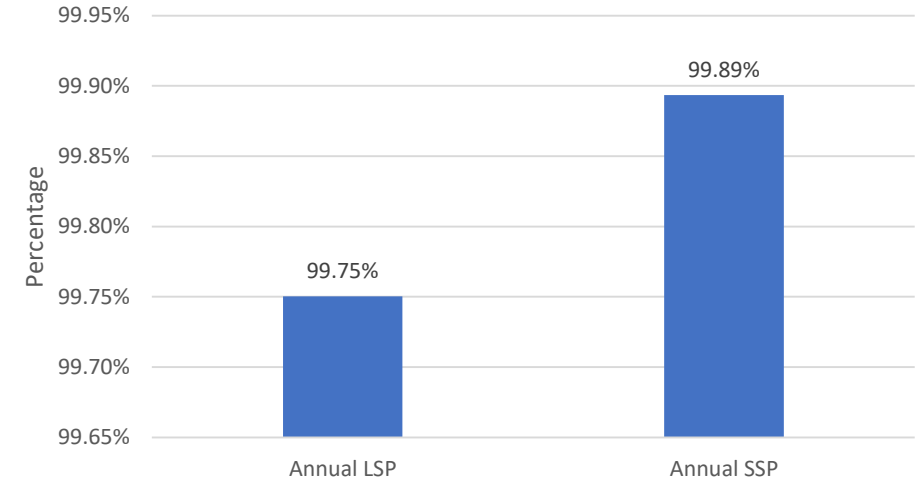
2A.5- Read Performance



Report measures the percentage of Shipper portfolio submitting reads



2A.5 Percentage of LSP/SSP read submission



Industry trends:

- PC1 - Industry trend is low despite few Shippers performing well
- PC2 - Many Shippers are performing poorly despite low number of sites in Class
- PC3 – This class remains the worst performing area in 2A.5
- PC4 - Industry average is low compared to number of sites in Class

Shipper Performance Observations:

- PC1 - Morecambe Central, Southsea Clarence, Falmouth, Mumbles and Harwich
- PC2 - Morecambe Central, Southsea Clarence, Falmouth, Mumbles and Harwich
- PC3 - Southsea Clarence, Falmouth, Clevedon and Weymouth Bandstand
- PC4 - Colwyn Bay, Herne Bay, Felixstowe, Saltburn, Weymouth, Claremont and Deal

PC1

- 100% Canary Wharf
- 86.36% Gravesend
- 75.00% Eastbourne

PC2

- 80.00% Colwyn Bay
- 57.49% Falmouth
- 41.46% Morecambe Central

PC3

- 100% Colwyn Bay
- 83.33 Ryde
- 65.00% Rothesay

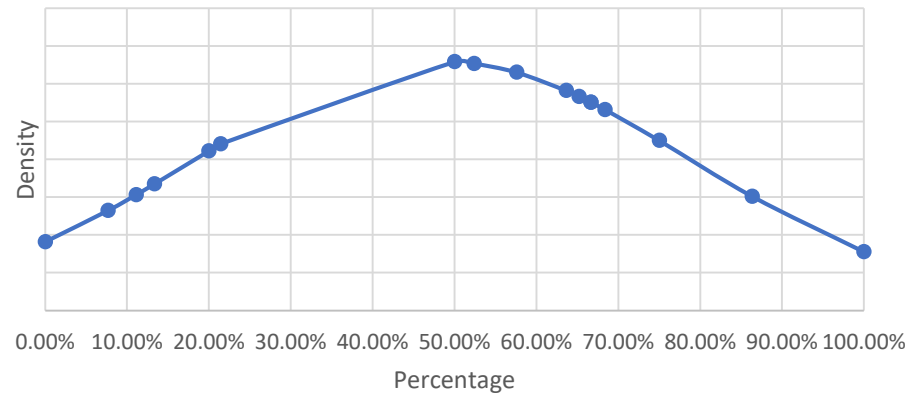
PC4

- 100% Totland Bay
- 100% Swanage
- 100% Llandudno

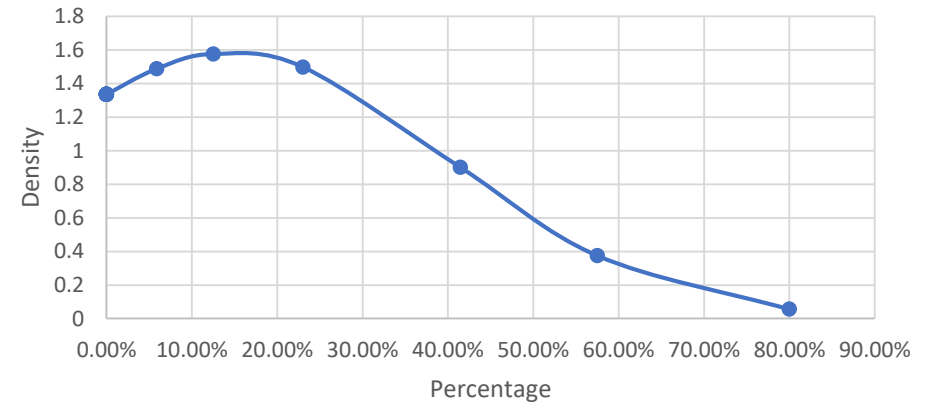
2A.5- Read Performance



2A.5 Distribution of percentage of PC1 sites providing meter reads



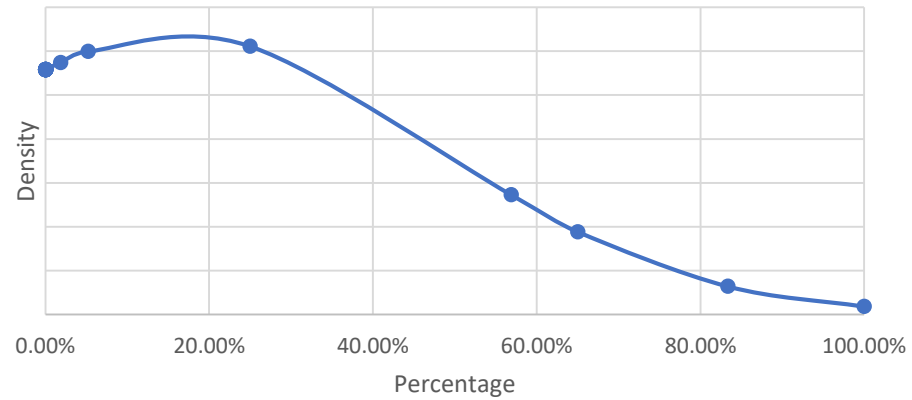
2A.5 Distribution of percentage of PC2 sites providing meter reads



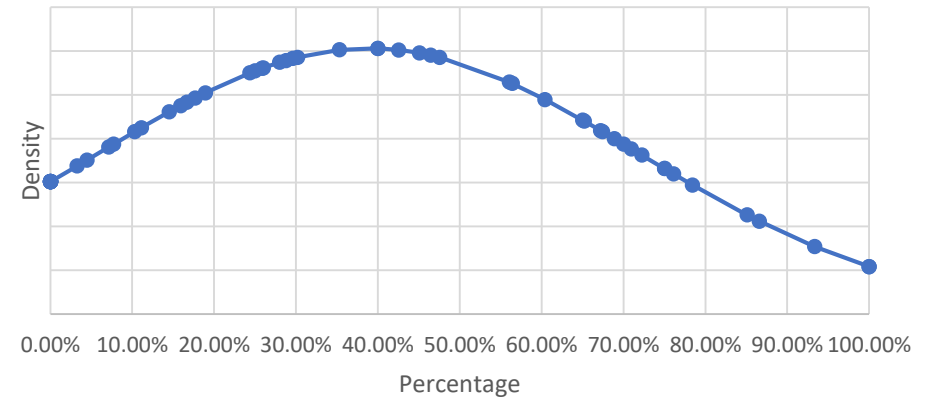
2A.5- Read Performance



2A.5 Distribution of percentage of PC3 sites providing meter reads



2A.5 Distribution of percentage of PC4 sites providing meter reads

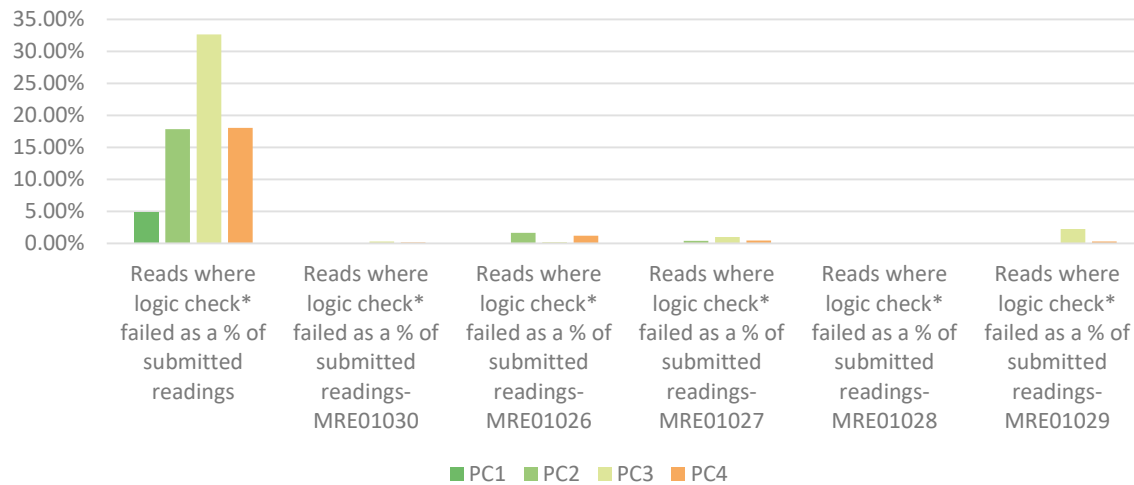


2A.6 Meter Read Validity Monitoring



Report measures the percentage of Shipper portfolio where reads submitted failed validation.

2A.6 Percentage of meter read validity by Product Class



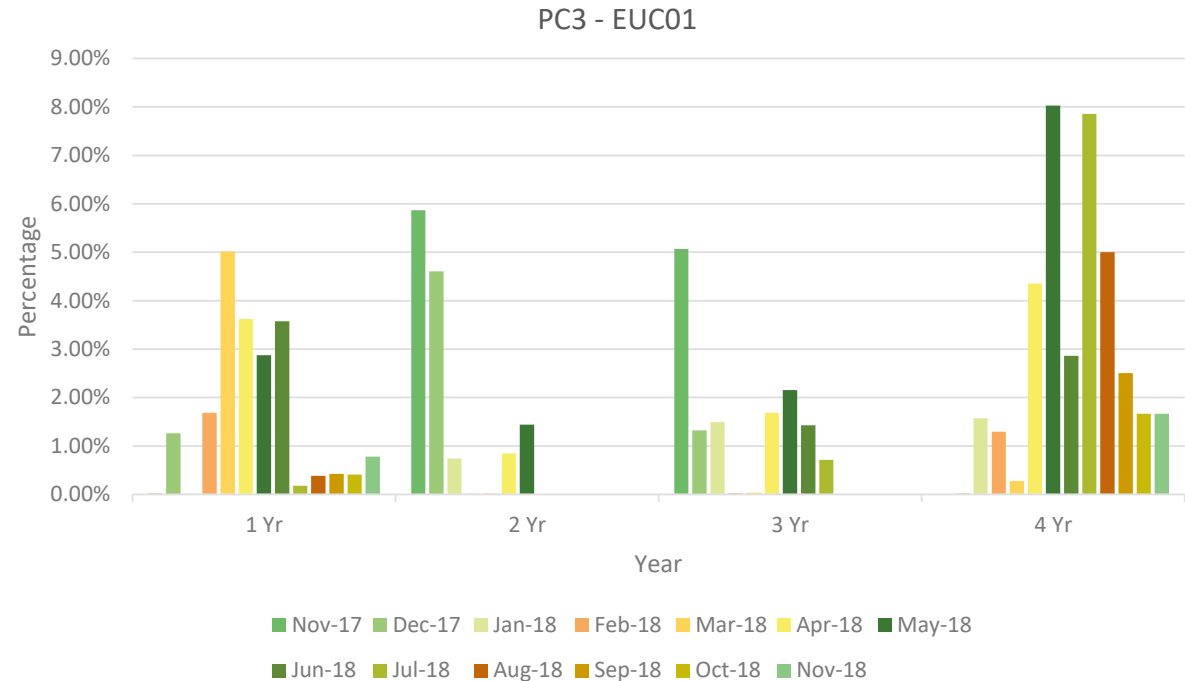
Product Class	Reads where logic check failed as a % of submitted readings	MRE01030 - Override tolerance passed and override flag provided	MRE01026 - Reading breached the lower Outer tolerance	MRE01027 - Reading breached the Upper Outer tolerance	MRE01028 - Reading breached the lower Inner tolerance value and no override flag provided	MRE01029 - Reading breached the upper Inner tolerance value and no override flag provided
1	14.21% Eastbourne					
2	63.08% Southsea Clarence	0.38% Folkstone	4.17% Mumbles	2.89% Eastbourne		0.12% Mumbles
3	58.06% Falmouth	2.00% Weymouth Bandstand	2.14% Colwyn Bay	17.36% Herne Bay		6.62% Rothesay
4	100% Ramsey	5.00% Cleethorpes	14.29% Culver	14.29% Culver		42.86% Totland Bay

2A.7 No Reads Received for 1, 2, 3 or 4 years



Report measures the percentage of Shipper portfolio in the specified AQ band without a meter reading for the specified period

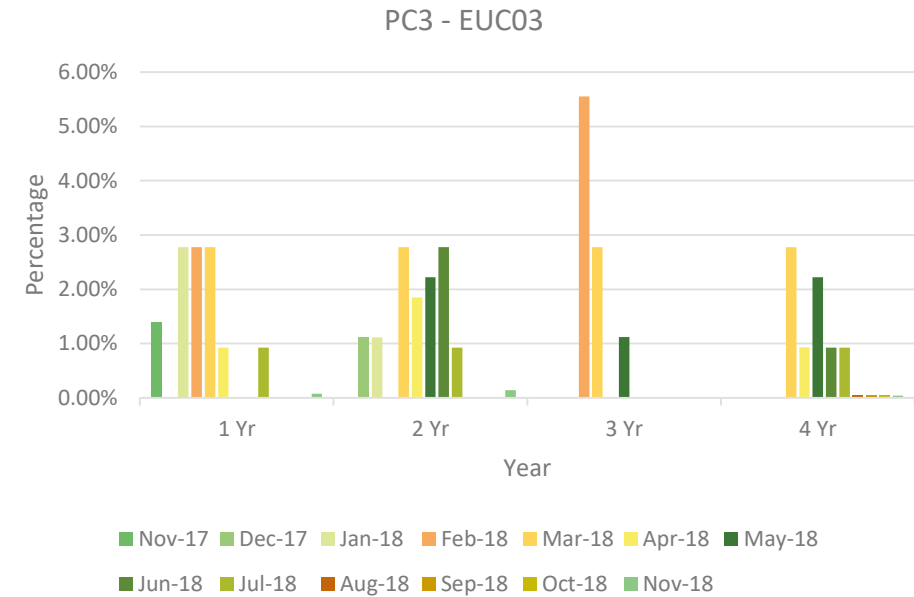
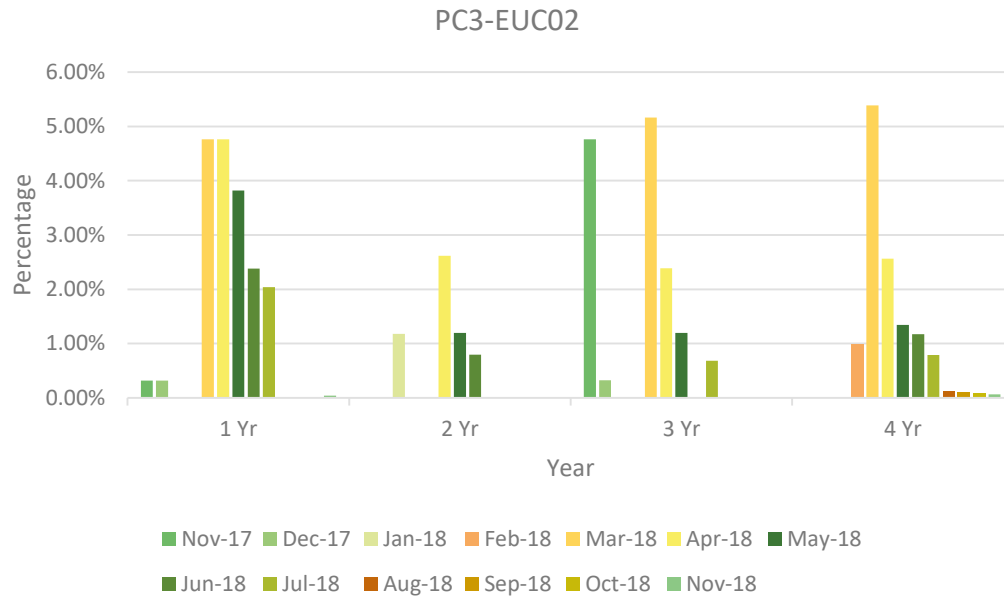
PC1 & PC2
Limited or no data both product classes



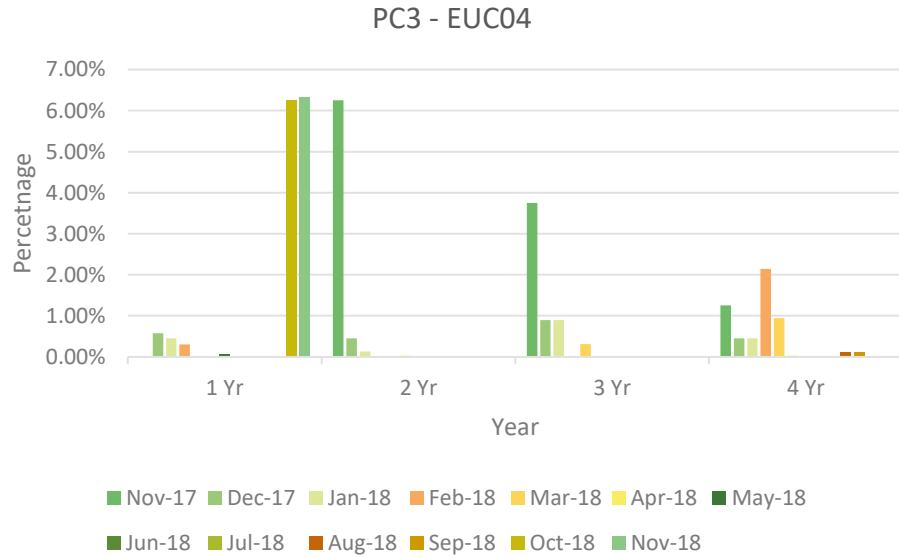
Industry trends:

- PC3: Highest number of no meter readings for the specified period for EUC01-EUC03 occurred between April and August 2018
- PC4: No meter readings for each specified period are consistent across all EUC bands

2A.7 No Reads Received for 1, 2, 3 or 4 years

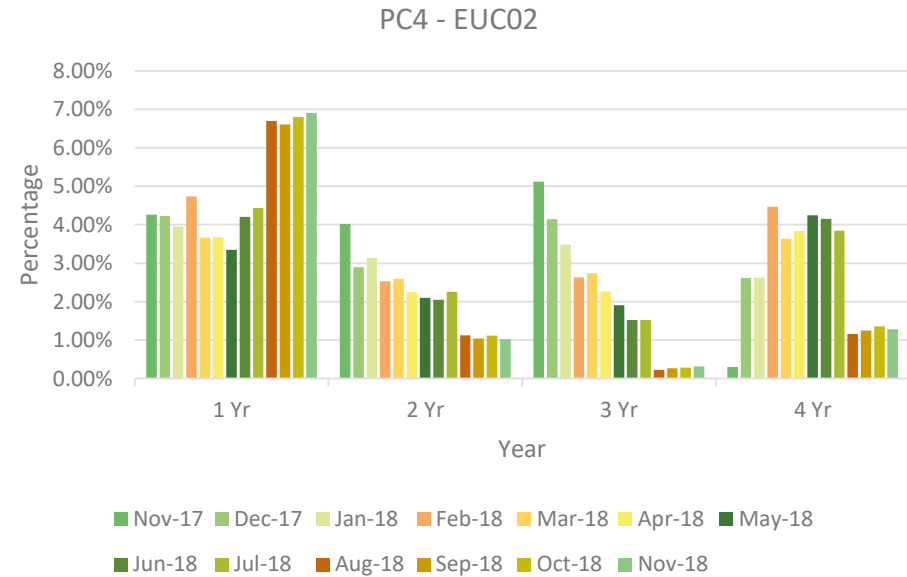
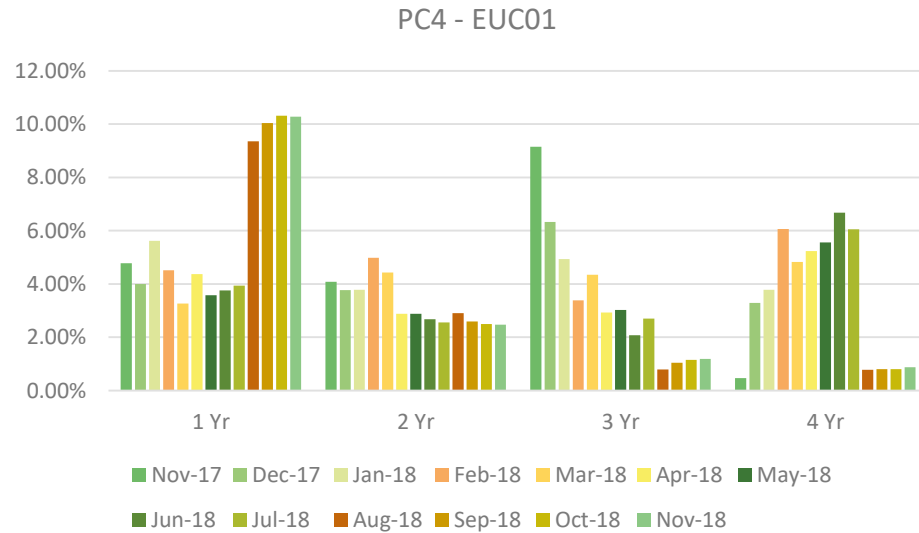


2A.7 No Reads Received for 1, 2, 3 or 4 years

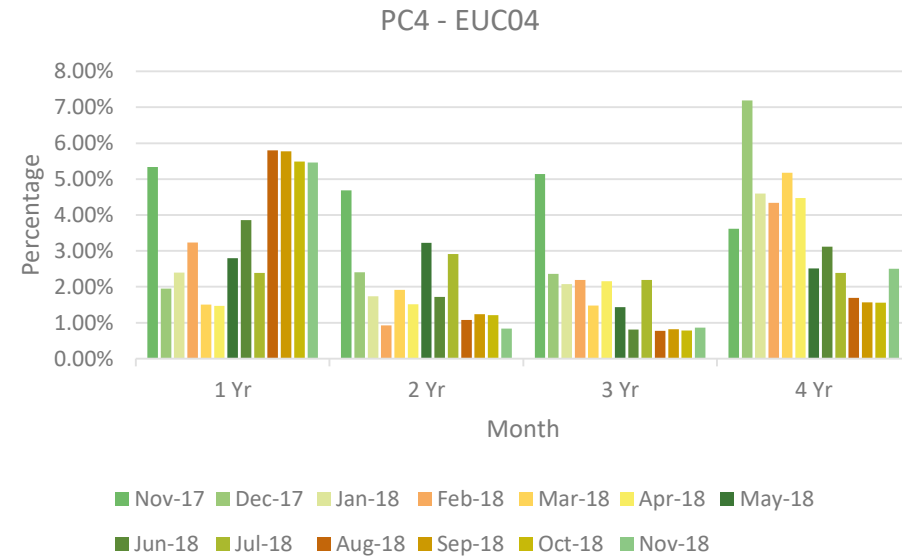
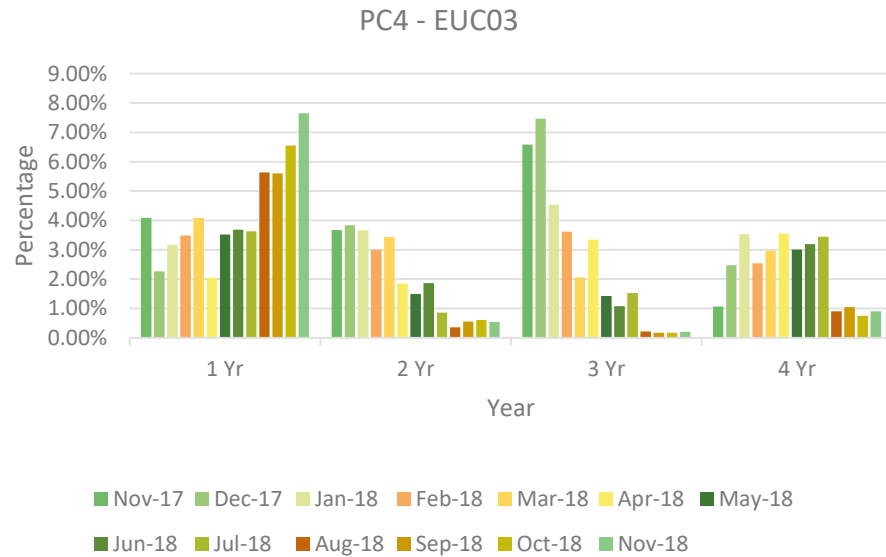


EUC05 – EUC09
No data

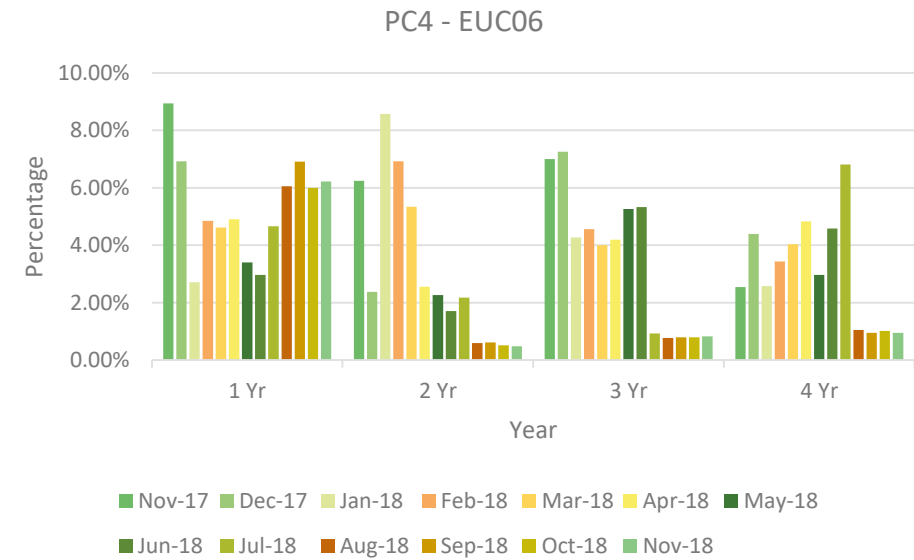
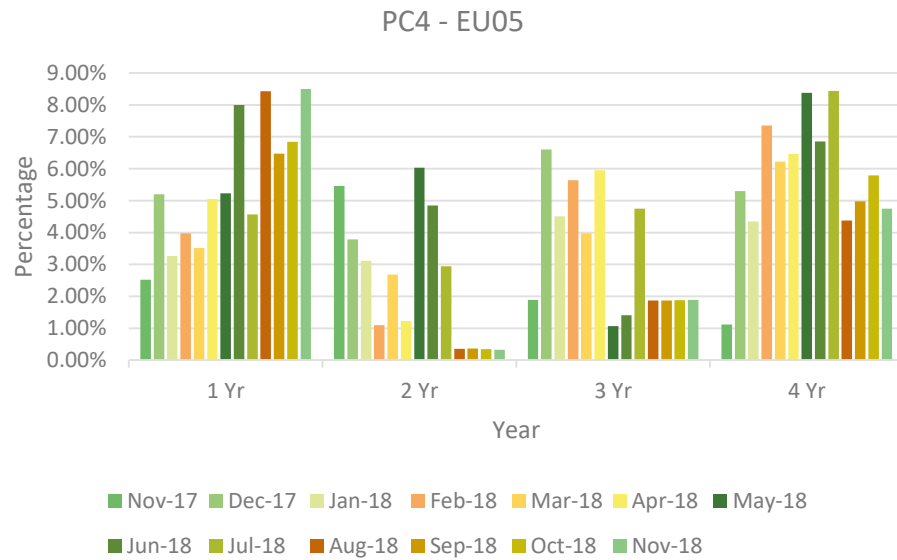
2A.7 No Reads Received for 1, 2, 3 or 4 years



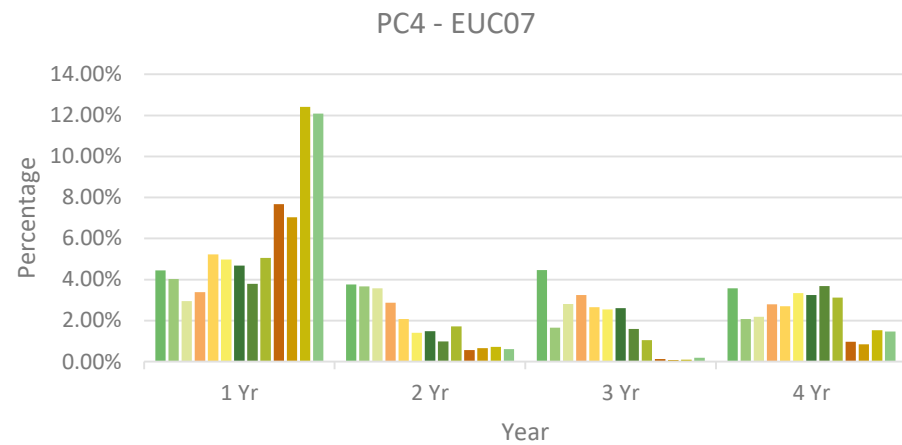
2A.7 No Reads Received for 1, 2, 3 or 4 years



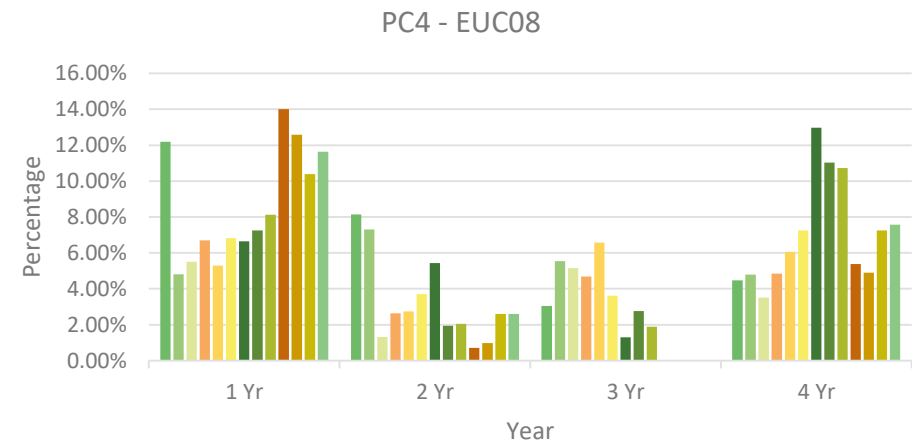
2A.7 No Reads Received for 1, 2, 3 or 4 years



2A.7 No Reads Received for 1, 2, 3 or 4 years

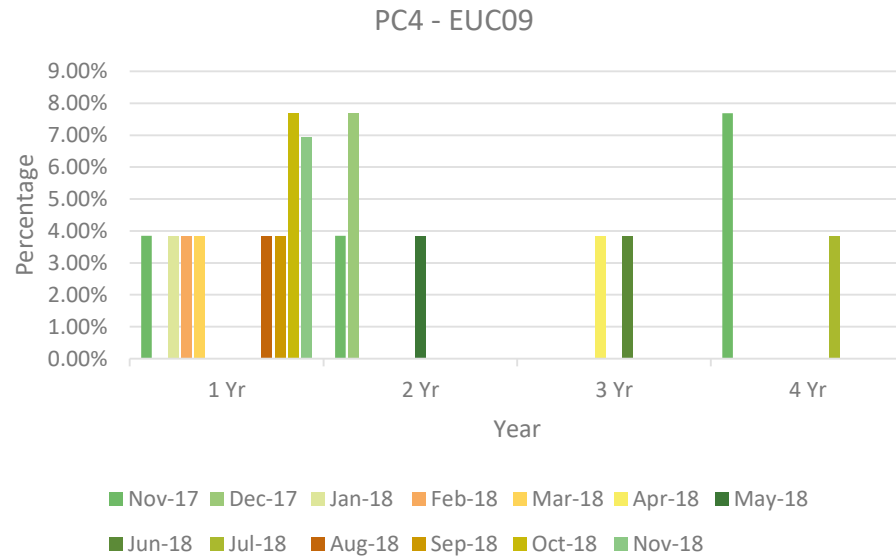


■ Nov-17 ■ Dec-17 ■ Jan-18 ■ Feb-18 ■ Mar-18 ■ Apr-18 ■ May-18
■ Jun-18 ■ Jul-18 ■ Aug-18 ■ Sep-18 ■ Oct-18 ■ Nov-18



■ Nov-17 ■ Dec-17 ■ Jan-18 ■ Feb-18 ■ Mar-18 ■ Apr-18 ■ May-18
■ Jun-18 ■ Jul-18 ■ Aug-18 ■ Sep-18 ■ Oct-18 ■ Nov-18

2A.7 No Reads Received for 1, 2, 3 or 4 years



2A.8 AQ Correction by Reason Code

Report measures the count of Shipper Portfolio of MPRNs where AQ Correction process Used

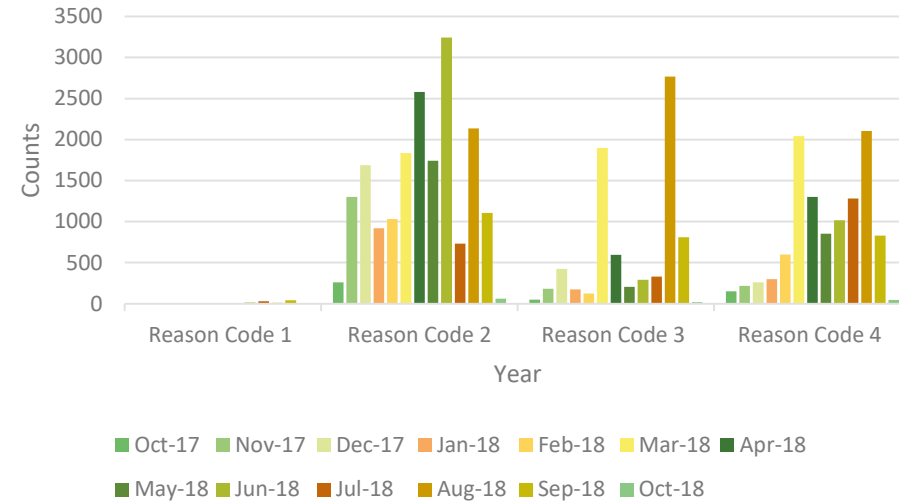
Reason Code 01 - Confirmed Theft
2 Falmouth

Reason Code 02 - Change in Consumer Plant
14 Felixstowe
12 Saltburn
8 Herne Bay

Reason Code 03 - Commencement of New Business
11 Herne Bay
6 Southend
2 Falmouth

Reason Code 04 - Tolerance Change
33 Colwyn Bay
6 Beaumaris
3 Morecambe Central

2A.8 Count of AQ Corrections used by reason code



Industry trends:

- Reason Code 02 - AQ Corrections have declined by 2075 between August & October 2018
- Reason Code 03 – AQ Corrections have decreased by 791 from Sept to Oct 2018
- Reason Code 04 – AQ Corrections have decreased by 782 from Sept to Oct 2018

Shipper Performance Observations:

- PAFA to conduct further investigation into this area

2A.9 Standard CF AQ > 732,000 kWh

Report measures the count of sites with an AQ>732,000 kWh, but having a standard correct factor

EUC04

- ↑ 15 Eastbourne
- ↑ 7 Folkstone
- ↑ 6 Southsea Clarence

- ↓ 646 Morecambe Central
- ↓ 13 Falmouth
- ↓ 9 Rothesay

Falmouth **867**,
Colwyn Bay **624**,
Southsea Clarence
388

- ↓ 631 Monthly Change
- ↑ 616 Annual Change

EUC06

- ↑ 3 Eastbourne
- ↑ 3 Colwyn Bay
- ↑ 1 Southsea Clarence
- ↑ 1 Ryde

- ↓ 12 Morecambe Central
- ↓ 1 Falmouth
- ↓ 1 Hastings
- ↓ 1 Harwich

Falmouth **25**, Gravesend
19, Southsea Clarence
15

- ↓ 7 Monthly Change
- ↑ 10 Annual Change

EUC05

- ↑ 4 Mumbles
- ↑ 4 Southsea Clarence
- ↑ 2 Herne Bay

- ↓ 53 Morecambe Central
- ↓ 3 Gravesend
- ↓ 2 Colwyn Bay

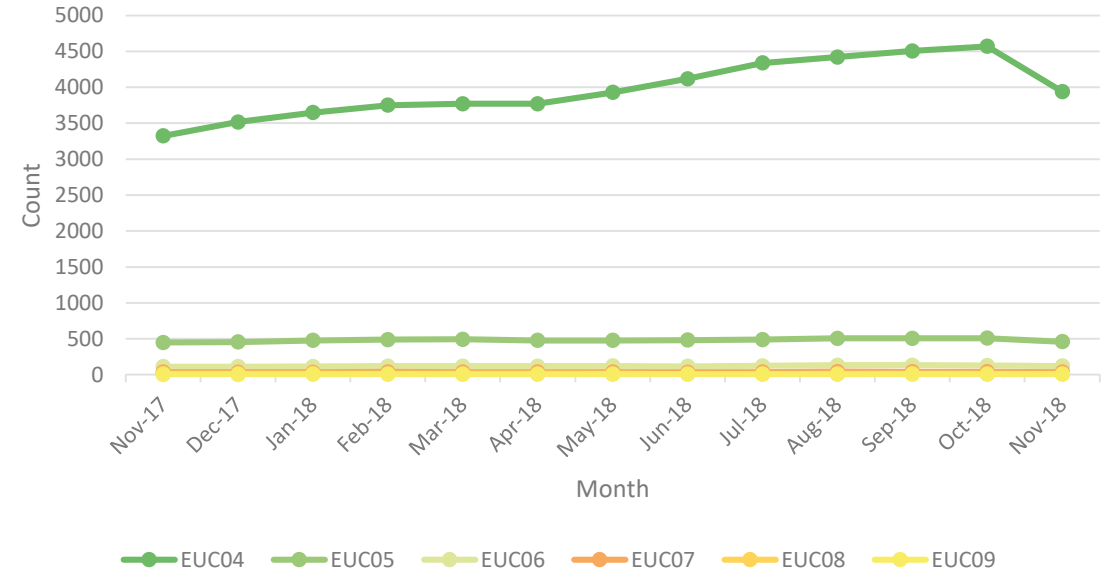
Falmouth **110**,
Southsea Clarence
68, Colwyn Bay **65**

- ↓ 48 Monthly Change
- ↑ 11 Annual Change

Industry trends:

- EUC04: Industry total decreased by 631 from October to November 2018

2A.9 Count of sites above >732,000 kWh using standard CF



Shipper Performance Observations:

- EUC04: Improvements have been made amongst some of the worst offenders
- EUC05: Minor improvement but poorest performers remain unchanged

2A.9 Standard CF AQ > 732,000 kWh



EUC07

No negative changes ↓ 3 Morecambe Central

Falmouth 9, Colwyn Bay 8, Southsea Clarence 6
 ↓ 3 Monthly Change
 ↑ 1 Annual Change

EUC09

↑ 1 Herne Bay
 ↑ 1 Southsea Clarence
 No positive changes

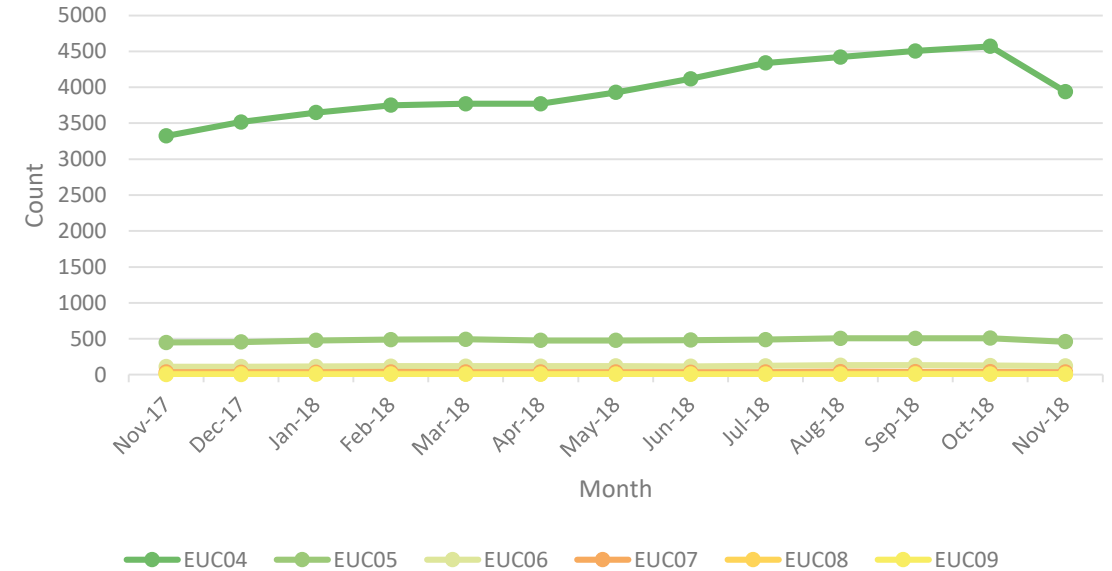
Falmouth 9, Colwyn Bay 8, Southsea Clarence 8
 No Monthly Change
 ↑ 7 Annual Change

EUC08

No negative changes ↓ 2 Herne Bay

Burnham-on-Sea 2
 ↓ 2 Monthly Change
 ↓ 3 Annual Change

2A.9 Count of sites above >732,000 kWh using standard CF



Industry trends:

- EUC09: Investigate periods October 2017 to August 2018 for Eastbourne as counts have reduced to 0 for the previous two months

2A.10 Replaced Meter Reads

Report measures the count of meter reading replacements which results in reconciliation adjustments.

EUC01

- ↑ 1585 Claremont
- ↑ 912 Deal
- ↑ 874 Rhyl

Claremont **8777**,
Deal **5425**,
Weymouth **2563**

- ↓ 75 Folkstone
- ↓ 65 Colwyn Bay
- ↓ 43 Falmouth

↑ 5132 Monthly Change
↓ 2001 Annual Change

EUC02

- ↑ 432 Folkstone
- ↑ 33 Beaumaris
- ↑ 25 Mumbles

Folkstone **509**,
Colwyn Bay **88**,
Herne Bay **72**

- ↓ 693 Claremont
- ↓ 503 Deal
- ↓ 279 Weymouth

↓ 1943 Monthly Change
↑ 548 Annual Change

EUC03

- ↑ 64 Folkstone
- ↑ 24 Mumbles
- ↑ 20 Gravesend

Folkstone **79**,
Gravesend **24**,
Mumbles **24**

- ↓ 103 Deal
- ↓ 79 Claremont
- ↓ 31 Weymouth

↓ 240 Monthly Change
↓ 65 Annual Change

EUC04

- ↑ 13 Mumbles
- ↑ 10 Folkstone
- ↑ 2 Bankside

Folkstone **26**,
Gravesend **23**,
Mumbles **16**

- ↓ 513 Claremont
- ↓ 400 Deal
- ↓ 278 Weymouth

↓ 1445 Monthly Change
↑ 43 Annual Change

EUC05

- ↑ 5 Folkstone
- ↑ 1 Morecambe West
- ↑ 1 Gravesend

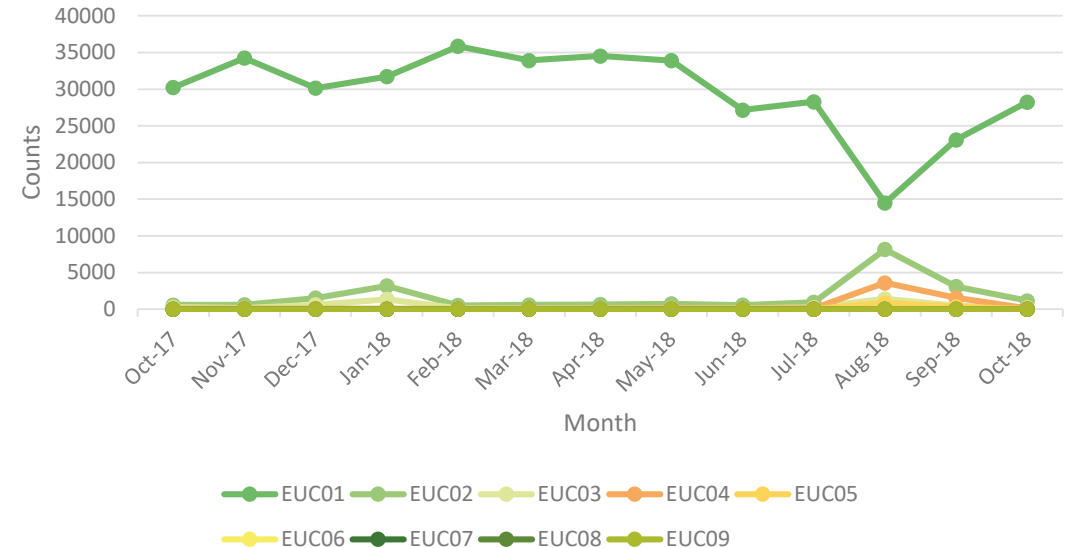
Gravesend **8**, Folkstone **7**,
Morecambe Central **5**

- ↓ 128 Claremont
- ↓ 90 Deal
- ↓ 30 Weymouth

↓ 328 Monthly Change
↑ 10 Annual Change

**Data cannot be
normalised for EUC06 - 09**

2A.10 Count of meter reading replaced by EUC



Industry trends:

- EUC01: Replacements showing an increase since August 2018

Shipper Performance

Observation:

- PAFA to perform further analysis on EUC01 and liaise with CAMs

PAFA@Gemserv.com

